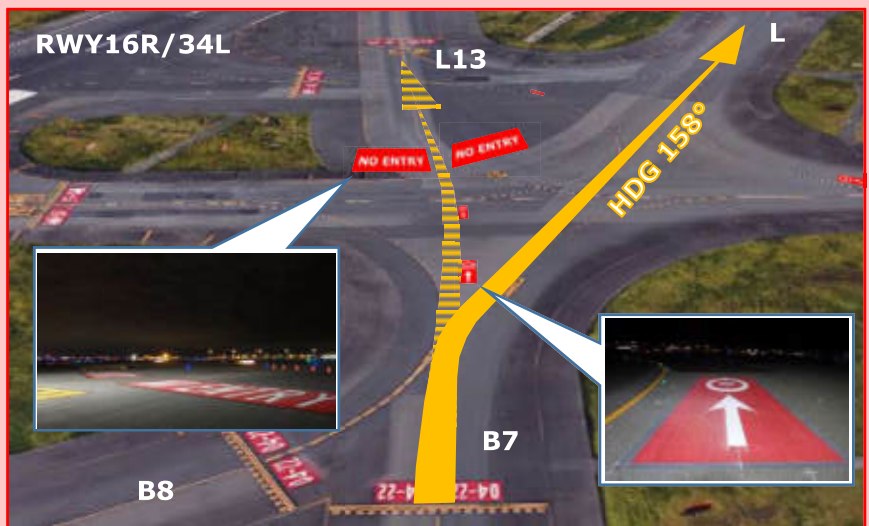


Tokyo International Airport Runway Incursion Hazard Map

Tokyo International Airport Runway Safety Team
Ver 2020.11.05

【B7→ L】

Pilots sometimes confuse L-TWY with L13, while taxiing from B7 to L-TWY. Do not enter L13.
※NO ENTRY MARKINGS exist.



【L16 – RWY16R/34L - A16】
Runway holding position markings are installed. ATC authorization shall be required for crossing the runway.



【T11 → A16】
Slope inclined downward toward RWY16R/34L. (①)
【T11 → RWY04/22 → B10】
Right turn while crossing RWY04/22. (②)



【L3, L4】

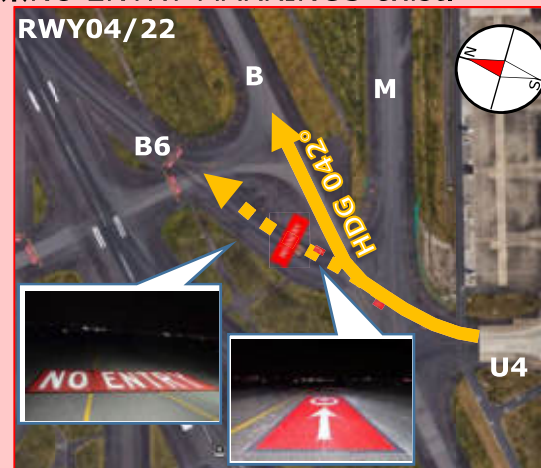
Use caution not to mistake the instruction issued to other planes for your own when crossing RWY16R/34L. Aircrafts sometimes cross RWY16R/34L simultaneously.

【Notice】

Since there are other complicated routes besides what you see in this chart, check the AIP Aerodrome charts etc. in advance.

【U4 → B-TWY】

Pilots sometimes confuse B-TWY with B6, while taxiing from U4 to B-TWY. Do not enter B6.
※NO ENTRY MARKINGS exist.



【 An incident in which an aircraft mistakenly entered a closed taxiway 】 September 2021

Date: September 2021, 3:57 a.m. Weather: Sunny

Location of the incident: Taxiway L and L-11

Relevant aircraft

Type: GLF5

Departure/Destination:

Tokyo International Airport / San Francisco International Airport

Departure runway: Runway 16L

【 Summary 】

The aircraft in question was instructed to taxi via P11→L→L14 from spot 151 by the controller and repeated the instructions correctly, but turned right from P11 into the L taxiway, then turned left and entered L11. The controller noticed that the aircraft in question was proceeding on the wrong route and instructed the aircraft to stop at its current location. The flight information officer conducted a temporary inspection and confirmed that there was no abnormality, so the flight information officer led the aircraft to runway 16L by the officer's vehicle and the aircraft took off from runway 16L.

【 Inspection results and damage status 】

No abnormalities as a result of inspection

No damage to aviation lights or other facilities

【 Remarks 】

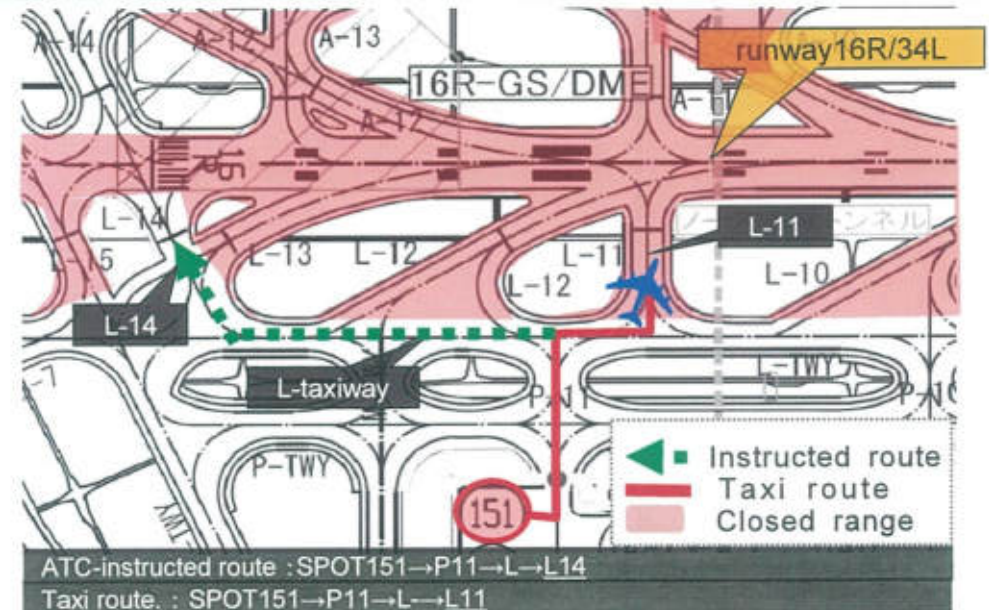
(Related NOTAM) RJTT NR.4906/21

(Closed time) September 23:00 – 6:30 (JST)

(Affected area) TWY A3 A4 A9 A11 A15 L3 L4 L9 L11 L15

【 Cause 】

- It was the first time for the crew in question to operate at this airport.
- They were concentrating on the checklist while taxiing, and misunderstood ATC instructions as “P11→L→L11”.
- There was no confirmation among the crew as to whether the route after P11 was a left turn or right turn.

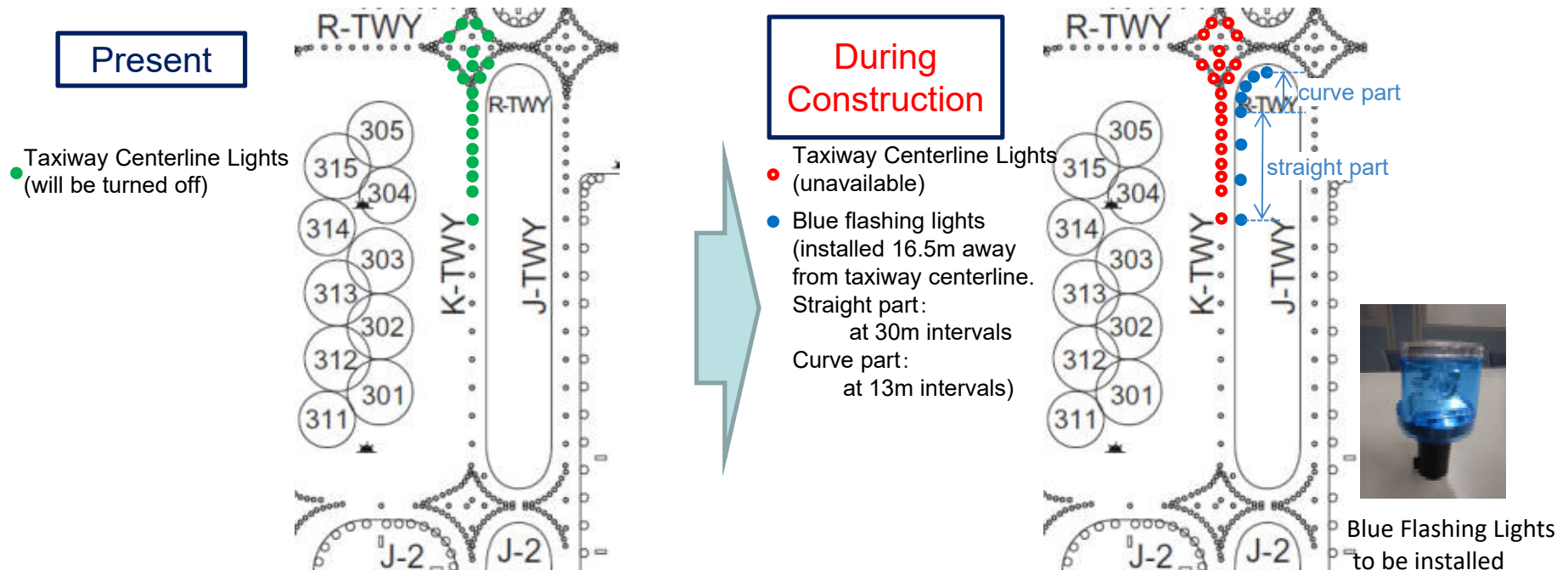


【 Time series (JST) 】

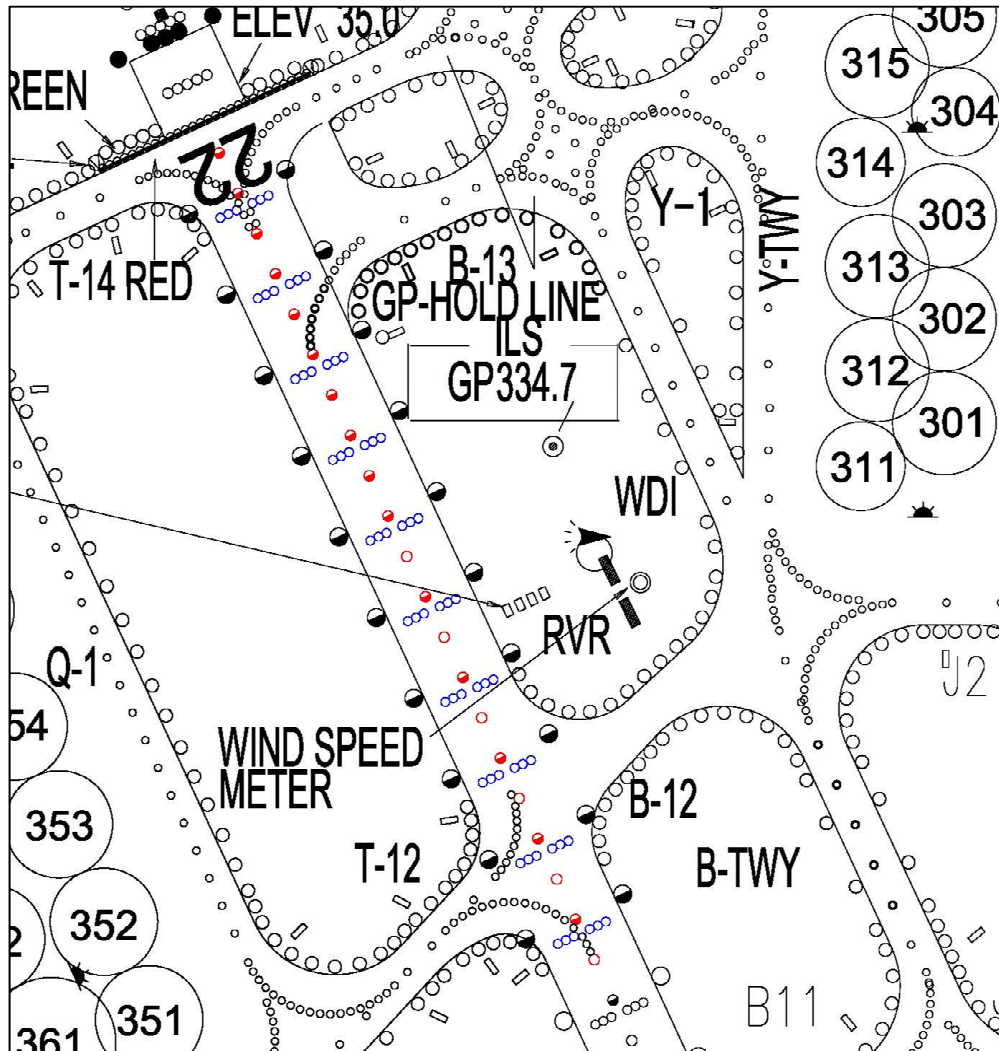
- 3:56 The aircraft called out to the controller at SPOT 151.
The controller instructed “P11→L→L14” and the aircraft correctly repeated the instruction.
- 3:57 When the aircraft turned right onto the L taxiway after proceeding to P11, the controller realized that the aircraft was proceeding to the wrong taxiway and instructed the aircraft to hold at the current location. When the aircraft reported that it was going to stop on L11, the controller again instructed the aircraft to hold at the current location because the taxiway was closed.
- 3:58 The controller notified the flight information officer that the aircraft has made a wrong turn onto the closed taxiway
- 4:02 The flight information officer's vehicle arrived at the scene.
Inspection confirmed no abnormalities.
- 4:21 The vehicle led the aircraft to runway 16L.
- 4:27 Guidance to runway 16L was completed.
- 4:30 The aircraft took off from runway 16L.



Installation of Flashing-lights for K-TWY in Tokyo INTL AP

- Due to pavement construction for K-TWY, Taxiway Centerline Lights(TCLL) of K-TWY between R and J2 will be unavailable, from Dec 1st 2022 to Mar 31st 2023.
- Blue flashing lights will be installed as taxiway guidance marks, while TCLL is unavailable.
- Be aware that blue flashing lights are not TCLL.



Unlit RW22 Runway Lighting (RJTT)



-  Unlit Runway Centerline Lights
-  Unlit Runway Touchdown Zone Lights

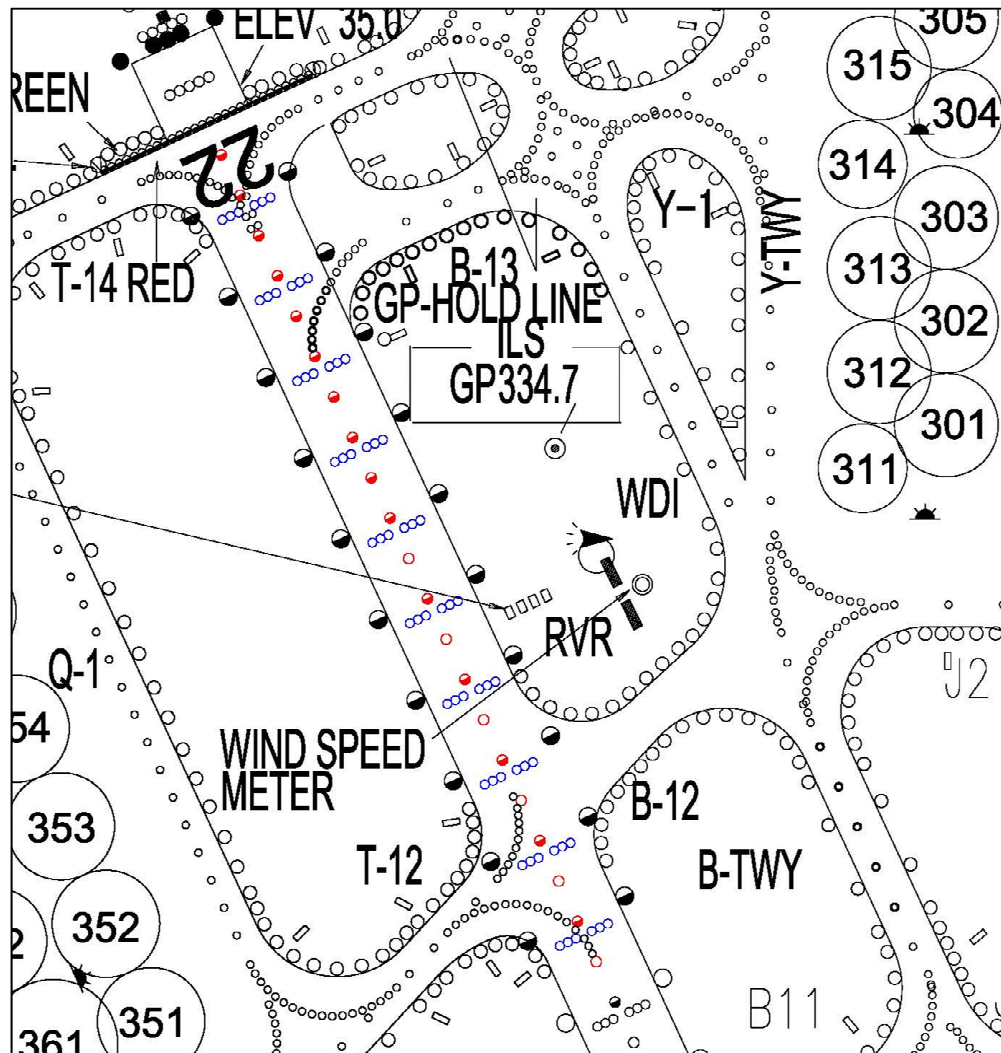
Unlit Period
0600 Japan Standard Time
01FEB2022 to late March 2023

-  Unlit Runway Touchdown Zone Lights



Unlit Period
0600 Japan Standard Time
01FEB2022 to late March 2023

※Weather minimum will change during this period.


Unserviceable LGT on RWY.04/22 at Tokyo INTL AP/RJTT



Unserviceable LGTs

-  Runway center line lights
(see RJTT NOTAM)
- 

Period: from 31 Jan 2022
2100 (UTC) to Late Mar
2023 EST

-  Runway touchdown
zone lights
(see RJTT NOTAM)

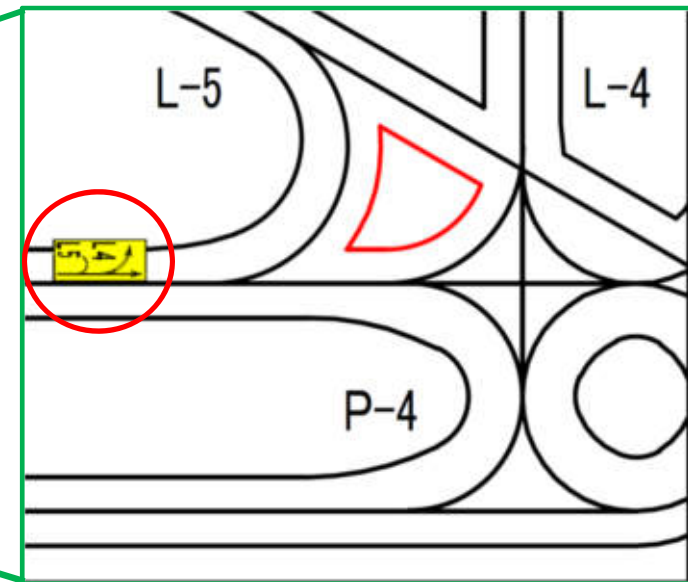
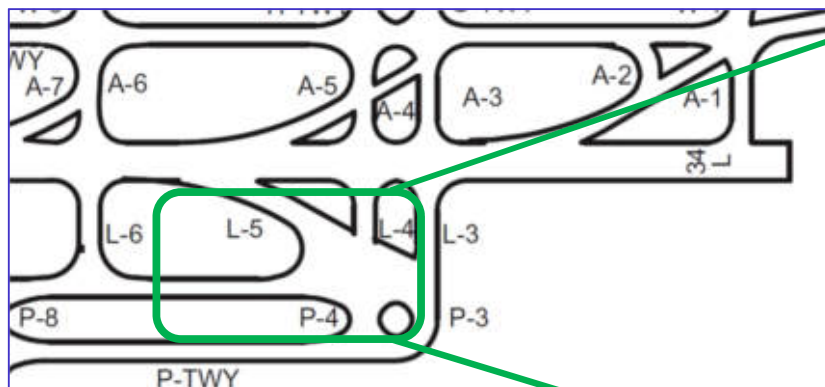
Period: from 1 Feb 2022
2100 (UTC) to Late Mar
2023 EST

* Minimum weather
conditions will be changed

Surface Painted Markings on L-TWY in Tokyo INTL AP

Surface Painted Markings as follow will be installed on L-TWY so as not to enter the L5-TWY by mistake.

And AIP(Type of Surface Painted Markings & AD Chart)will be published on 27th JAN 2022.



Enlarged figure



Markings showed by Red

Tokyo International Airport Office