

<p><b>Contact</b></p> <p>Post: Aeronautical Information Management General Civil Aviation Authority P.O. Box 666 Abu Dhabi United Arab Emirates</p> <p>Tel: +971 2 599 6895 Fax: +971 2 599 6889 AFS: OMAEYOYX Email: <a href="mailto:aim@szc.gcaa.ae">aim@szc.gcaa.ae</a> URL: <a href="http://www.gcaa.gov.ae">www.gcaa.gov.ae</a></p>	<p><b>AIP Supplement - United Arab Emirates</b></p> <div style="display: flex; justify-content: space-around; align-items: center;"> <div style="text-align: center;"> <p>الهيئة العامة للطيران المدني GENERAL CIVIL AVIATION AUTHORITY</p> </div> <div style="text-align: center;"> <p>United Arab Emirates</p> </div> </div>	<p><b>AIP SUP 35/2023</b> Effective from 07 SEP 2023 UFN Published on 07 SEP 2023</p>
--	--	---

## OMDB - DUBAI / INTERNATIONAL – TEMPORARY CLOSURES OF TAXIWAYS

### INTRODUCTION

This AIP Supplement replaces AIP SUP 02/2023.

The purpose of this AIP Supplement is to inform operators of temporary taxiway closures at OMDB - DUBAI / INTERNATIONAL Airport to facilitate airfield improvement works. The works are planned in various phases as indicated below.

The effective date of the taxiway closures will be notified by NOTAM and / or Airside Advise Notice (to airport users) ahead of the closures.

*Note: The work / closure phases listed below are not in any particular order.*

### AREA C01

- TWY L3 and TWY Z4 closed
- Section of TWY K between TWY L2B and TWY L4 closed
- Sections of TXL J1 and TWY Y north of TXL Z closed

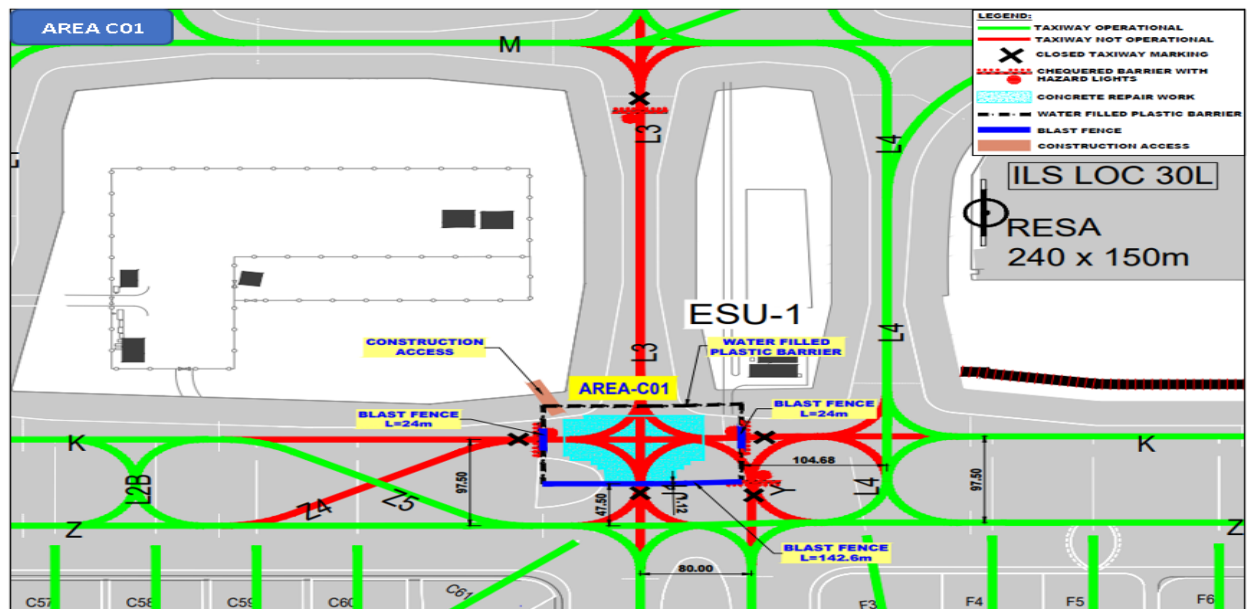


Figure 1 - AREA C01

### AREA C02

- Section of TXL Z between TWY Z5 and TWY Y closed.
- Sections of TXL J1 and TWY Y north of TXL Z closed.
- TWY Z5 closed.
- TWY Y east link onto TXL Z temporarily relocated to the east. Taxiway centre line installed with green reflectors instead of centre line lights. Temporary centre line will be available for unrestricted movements up to Code F in CAT I conditions. In CAT II/III conditions, movements may be allowed under "Follow-me" guidance; to be confirmed via NOTAM and/or ATC.

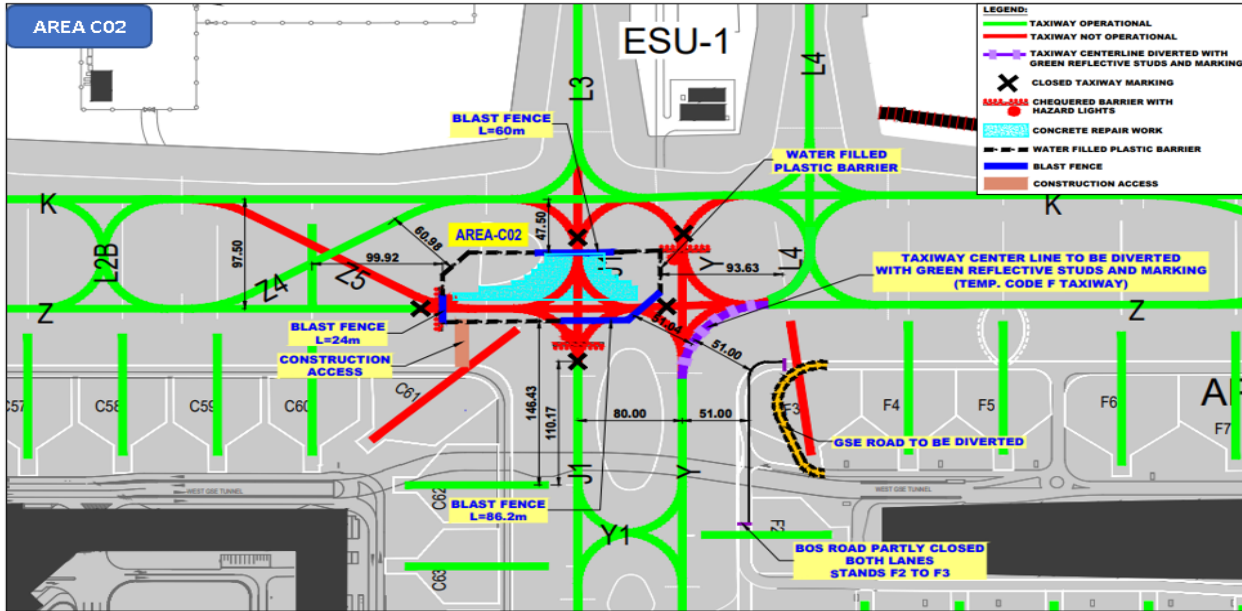


Figure 2 - AREA C02

### AREA C03

- Section of TXL Y south of TXL Z closed.
- TWY Y1 closed.
- Temporary crossover taxiway "U1A" implemented between IHP JA and stand B4. Taxiway centre line installed with green reflectors. No centre line lights are available. Temporary crossover will be available for unrestricted movements up to Code F in CAT I conditions. In CAT II/III conditions, movements may be allowed under "Follow-me" guidance; to be confirmed via NOTAM and/or ATC.

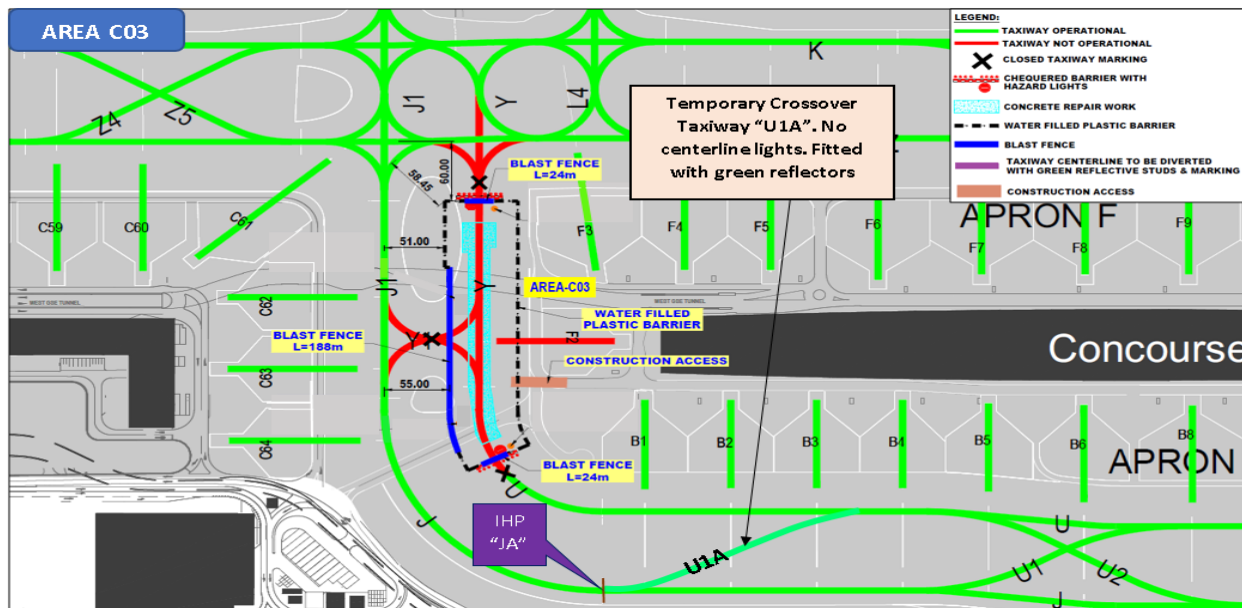


Figure 3 - AREA C03

## AREA C04

- Section of TXL J between TWY U3 and TWY U6 closed.
- TWY U4 and TWY U5 closed.
- Section of TXL U between stands B12 and B23 temporarily relocated marginally to the south to provide Code F clearance. There are no centre line lights. Instead, taxiway centre line will be installed with green reflectors with separation of 7.5 M.

### Temporary Arrival Procedures / Restrictions:

- Code F arrivals to stands B18R and B21R will be via relocated TXL U.
- Code E arrivals to stands abeam the relocated TXL U will be via relocated TXL U.

### Temporary Pushback Procedures / Restrictions:

- Code F departures from stands B18R and B21R will be via relocated TXL U.
- Code E departures from stands abeam the relocated TXL U will be onto the relocated TXL U.

### In "Follow the Greens" (FTG):

- a. For Code F: "Follow-Me" guidance will be provided for aircraft movement on the relocated TXL U section :

- Between 1400 - 1600 UTC in CAT I.
- At all times in CAT II/III conditions.

Reporting points will be IHPs JB (eastbound) and JF (westbound).

- b. For Code E & below: "Follow-Me" will be provided for aircraft movement on the relocated TXL U section in CAT II/III conditions only; reporting points will be IHPs UB (eastbound) and UF (westbound).

### Risk of inadvertent Code F (A380) movement on non-Code F section of TXL U:

To mitigate the risk of Code F on the relocated TXL U section continuing straight onto non-Code F TXL U sections, below will be applied:

- In CAT I conditions outside of FTG, ATC will provide sequential taxi clearance - initially until IHP UD and subsequently onto crossover TWY U3 / TWY U6.
- Additional "Keep Left" ↙ A380 or "Keep Right" A380 ↗ guidance marking will be provided on relocated TXL U just before the crossover TWY U3 and TWY U6 respectively to caution the Pilots.

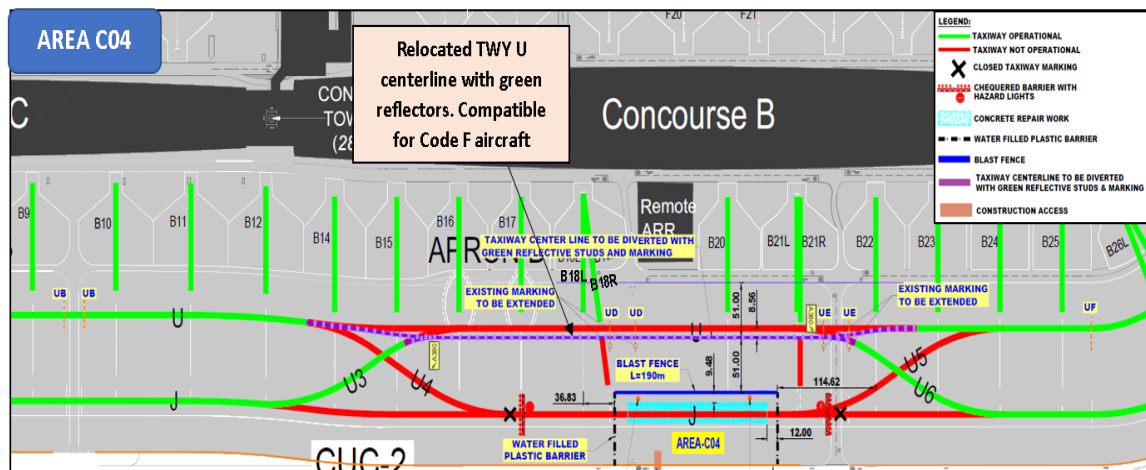


Figure 4 - AREA C04

## AREA C06

- Section of TXL Z between stand F26R and stand A2 closed.
- Section of TXL W north of TWY W1 closed.
- Intersection between TXL J2, TXL Z and TWY K temporarily relocated to the east to allow movements up to Code F. The temporary taxiway centre line is installed with green reflectors instead of centre line lighting.
- Temporary crossover taxiway "Z12" implemented between TXL Z and TWY K abeam stand F24. Taxiway centre line installed with green reflectors instead of centre line lights.
- Aforementioned taxiway sections without centre line lights will be available for unrestricted movements up to Code F in CAT I conditions. In CAT II/III conditions, movements may be allowed under "Follow-me" guidance; to be confirmed via NOTAM and/or ATC.
- Aircraft exiting runway via TWY K8 to exercise caution due to worksite in proximity.

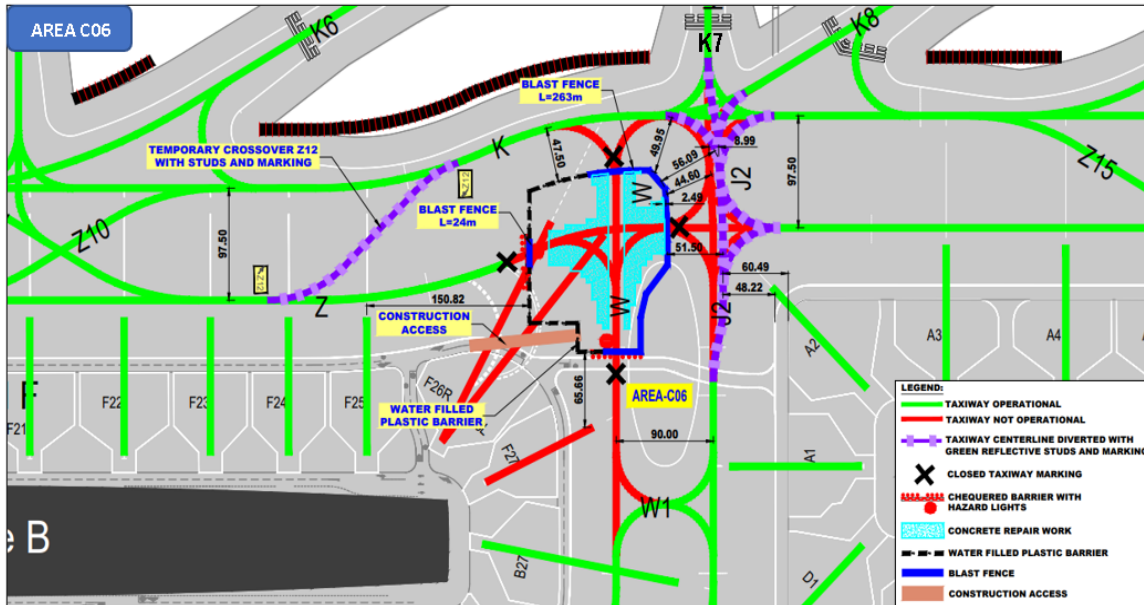


Figure 5 - AREA C06

**AREA C07**

- Section of TWY K between IHP KM and TWY K7 closed.
- TWY W north of TXL Z closed.
- TWY Z10 not available.
- Temporary crossover taxiway “Z14” implemented between TXL Z and TWY K abeam stand A2. Taxiway centre line installed with green reflectors instead of centre line lights. Temporary crossover will be available for unrestricted movements up to Code F in CAT I conditions, movements may be allowed under “Follow-me” guidance; to be confirmed via NOTAM and/or ATC.
- Aircraft exiting runway via TWY K8 to exercise caution due to worksite in proximity.

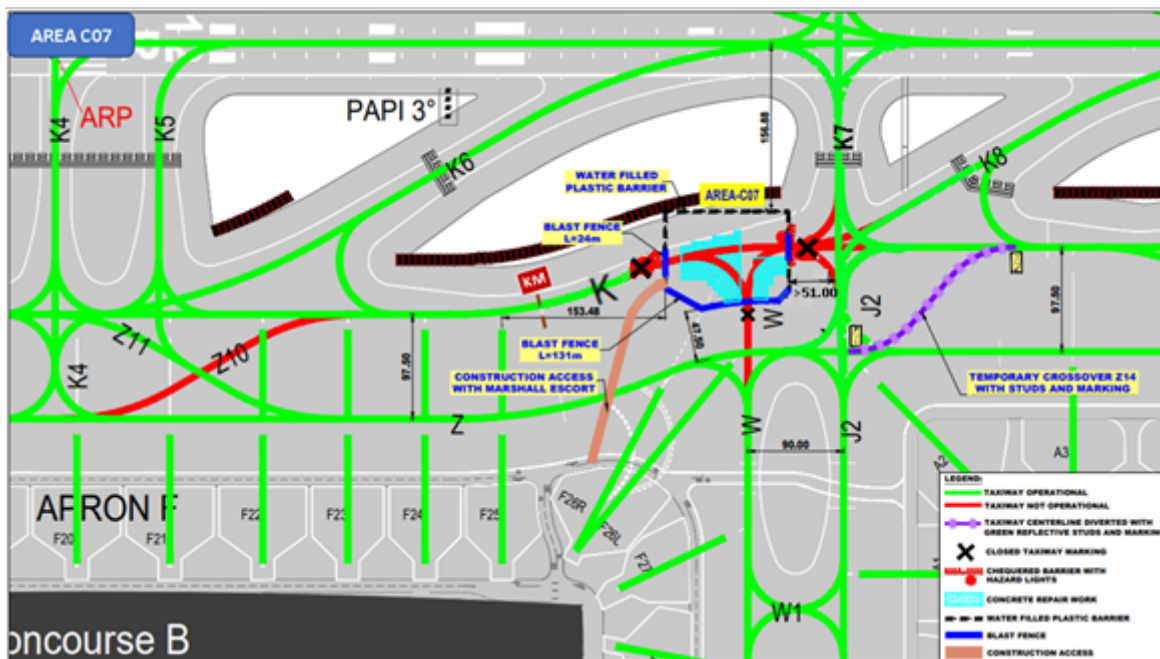


Figure 6 - AREA C07

## AREA C08

- Section of TWY K between IHP KM and TWY K8 closed.
- TWY K7 closed.
- West link of TWY K8 onto TWY K closed.
- TXL J2 north of TXL Z closed.
- Temporary crossover taxiway "Z14" implemented between TXL Z and TWY K abeam stand A2. Taxiway centre line installed with green reflectors instead of centre line lights
- TWY W west link onto TWY K temporarily relocated to the west. Taxiway centre line installed with green reflectors instead of centre line lights.
- Aforementioned taxiway sections without centre line lights will be available for unrestricted movements up to Code F in CAT I conditions. In CAT II/III conditions, movements may be allowed under "Follow-me" guidance; to be confirmed via NOTAM and/or ATC
- Aircraft exiting runway via TWY K8 to exercise caution due to worksite in proximity

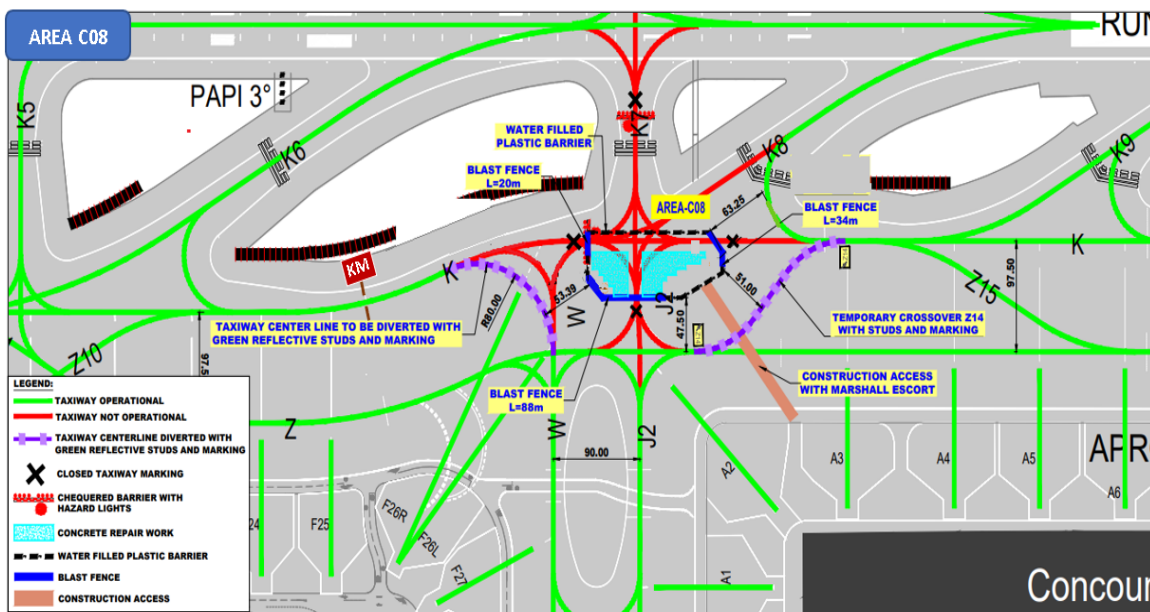


Figure 7 - AREA C08

## AREA C09

- Section of TXL Z between stand F26R and stand A2 closed.
- Section of TXL J2 north of IHP J2A closed.
- Intersection between TWY W, TXL Z and TWY K relocated temporarily to the west to allow movements up to Code F. The temporary taxiway centre line is fitted with green reflectors instead of centre line lighting.
- Section of TXL W north of TWY W1 is available for up to Code F movements.
- Temporary crossover taxiway "Z12" implemented between TXL Z and TWY K abeam stand F24. Taxiway centre line installed with green reflectors instead of centre line lights.
- Aforementioned temporary taxiway sections without centre line lights will be available for unrestricted movements up to Code F in CAT I conditions. In CAT II/III conditions, movements may be allowed under "Follow-me" guidance; to be confirmed via NOTAM and/or ATC.

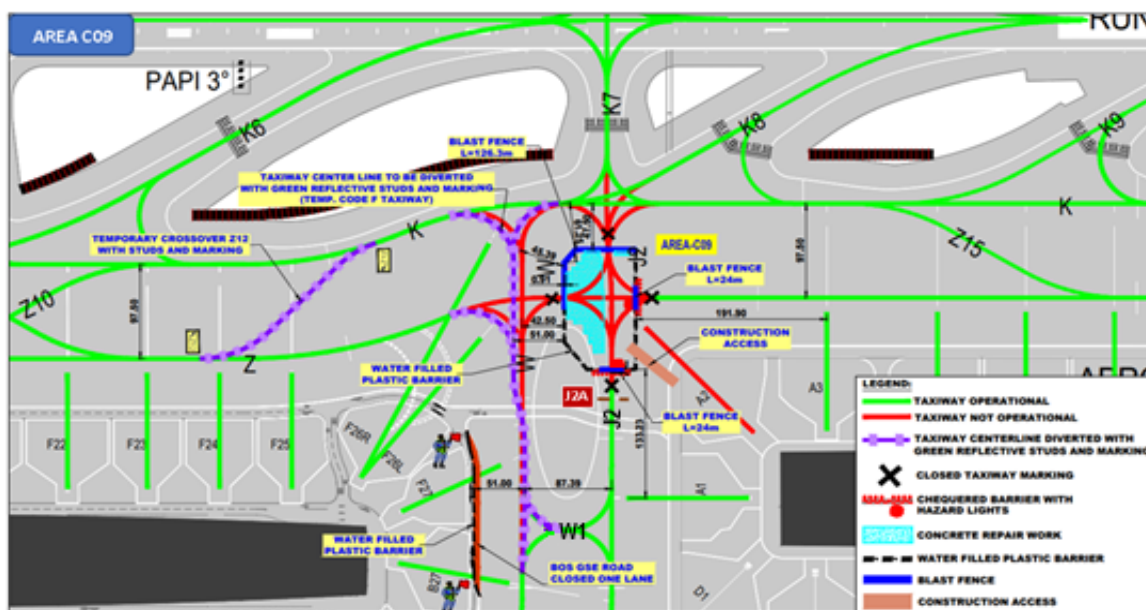


Figure 8 - AREA C09

### AREA C23

- Section of TXL Z between stands F3 and F6 closed.
- East link of TWY L4 onto TXL Z closed.

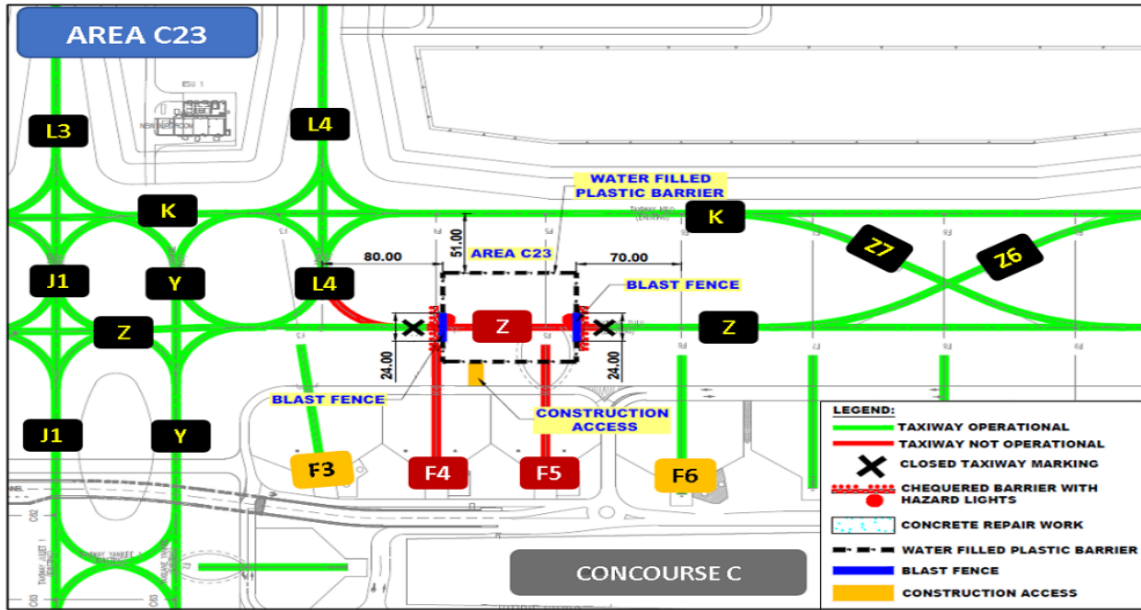


Figure 9 - AREA C23

### AREA C24

- TWY Z6 and TWY Z7 closed.
- Section of TXL Z between stands F8 and F10 closed.

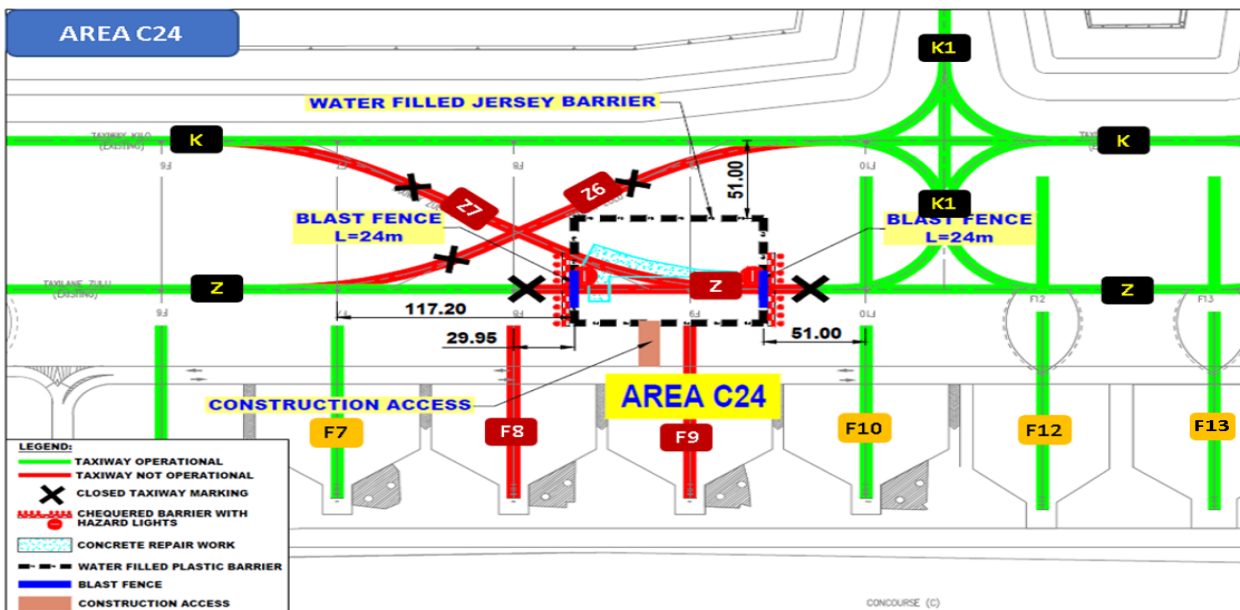
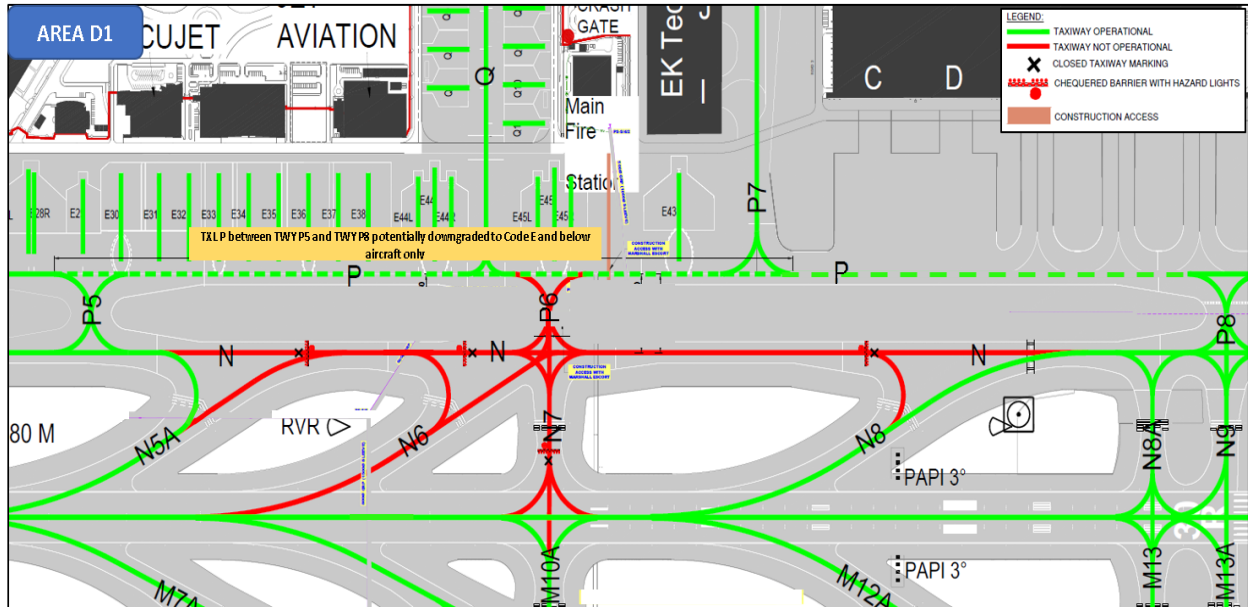


Figure 10 - AREA C24



**AREA D1**

- Section of TWY N between TWY N5A and TWY N8 closed.
- East link of TWY N5A closed.
- West link of TWY N8 closed.
- TWY P6, TWY N6 and TWY N7 closed.
- Section of TXL P between TWY P5 and TWY P8 may be downgraded for Code E and below aircraft operations only; to be confirmed by NOTAM.

**Figure 11 - AREA D1**

*PAGE INTENTIONALLY LEFT BLANK*