

# Everyone is talking about Zurich

OPSGROUP Team

11 April, 2022



There are a lot of Zurich related posts out there right now because the World Economic Forum is coming around soon, and with it some need to know things about Zurich, which is the main airport closest to where the forum is held.

On top of that, summer is on its way and with it the usual parking restrictions at all the popular tourist spots, which Zurich happens to be one of. So we thought we would take a look at it specifically, and share some info on what options you might have.

**If you are operating into the general region during the WEF dates, get book now - some airports are already full!**

**First up, the Forum.**

The World Economic Forum is big. It is the 'World' one after all. You can read about it [here](#).

But what you probably want to know is where it is, and when it is.

- It actually **takes place in Davos** (but LSZH/Zurich gets busy with important people, and their jets, flying in and out)
- It takes place between **May 22nd and May 26th**

So if you want fly in here and park between May 22nd and May 26th then good luck, unless you have an important person onboard, then just make sure you've pre-arranged it. Actually, better make that May 20 to May 29 because some might stay on over the weekend.

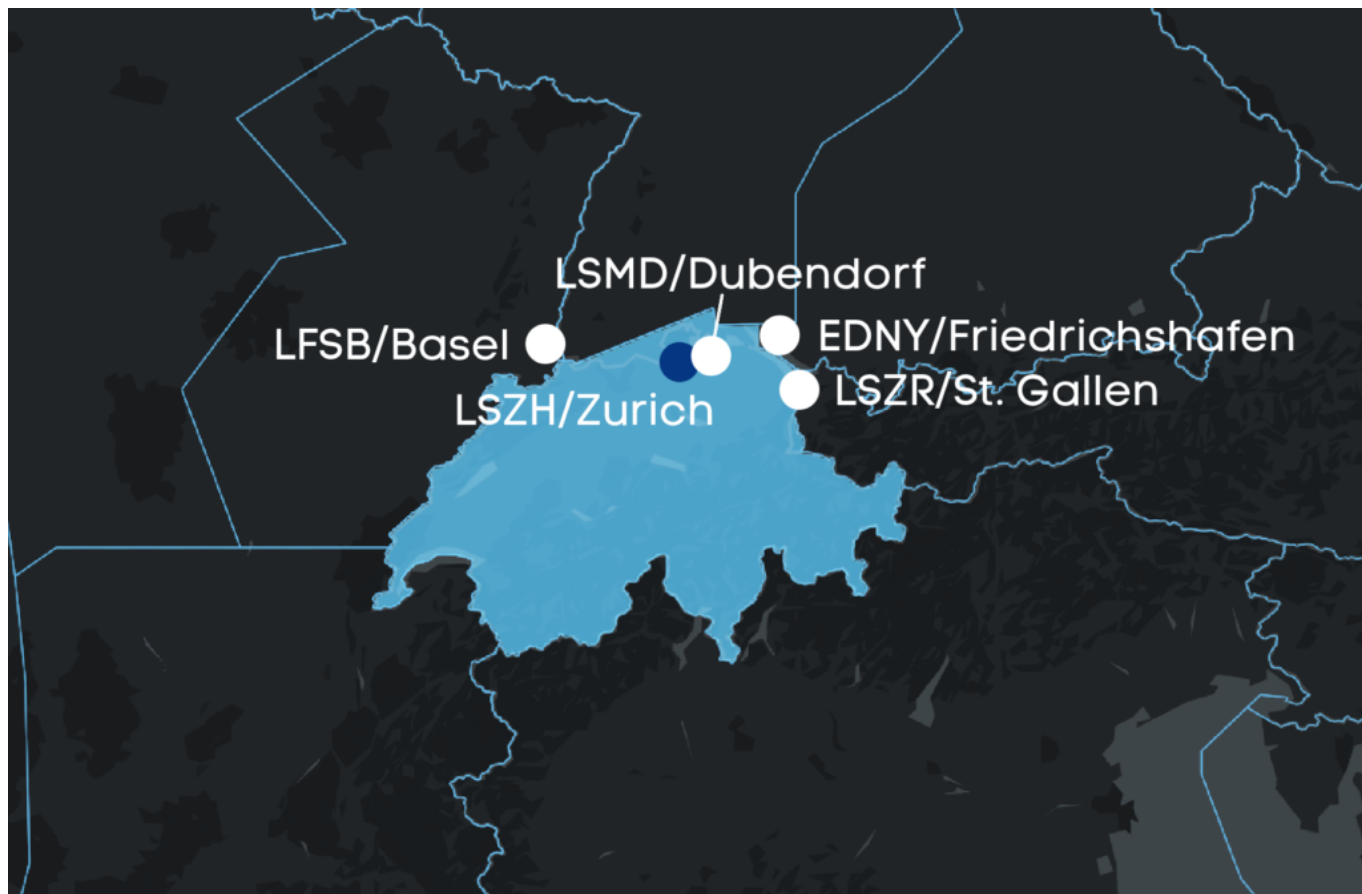


I believe it happens in there

### **Where can you park?**

LSZH/Zurich probably isn't an option anymore so check out some the following. But do it fast. Spots are filling quickly and its pretty much on a first come first served basis at this point.

- **LSMD/Dubendorf**
- EDDL/Düsseldorf
- LOWW/Vienna
- **LFSB/Basel**
- **EDNY/Friedrichshafen**
- **LSZR/St.Gallen Altenrhein**
- LSZS/Samedan



Some of the nearer options

Here is some info on the ones you might not have info on.

### **LSMD/Dubendorf**

**Respositioning to and from LSZH/Zurich is not possible - there are customs available, and aircraft must operate in an out as their destination and origin.**

The airport is only available to WEF related flights during the WEF period. There is also a query over whether fuel is available so confirm with the agent.

- **Some contact info**

If you want to use Dubendorf during the World Economic Forum you are going to have to speak to **TopMotion** as they are the main handlers here: **+41 44 8420 10 60** / [aircraft.handling@topmotion.ch](mailto:aircraft.handling@topmotion.ch)

We got some info from them already. You can see their 2022 price list [here](#) and take a look at their WEF Air Crew Guide [here](#).

- **Some operational info**

**Dubendorf's runway 11/29 is 7726' (2355m) x 40m.**

Runway 29 is equipped with **CAT I ILS and RNP** approaches while runway 11 is, well, not, Something to do with the majorly high terrain they put directly by the runway. (OK, maybe the terrain was there first, but it does sit right where what would be the missed approach for 11 would take you).

The terrain is high with and MSA of 5000' to the North, and then **9000', 10400' and 11200' in the south**. It's that terrain that gives the ILS its **4.5° approach angle**, which means you're probably going to need a steep approach approved aircraft and some special training for here, before heading in.

The airport elevation is 1450', and the missed approach (busy because of the terrain as well), has a required gradient of 6%.





This is a challenging airport

## **LFSB/Basel**

A good option... but parking may already be fully booked here.

## **EDNY/Friedrichshafen**

Be aware as this airport is in Germany, **fuel will generally be more expensive** as the taxes are higher here.

- **Some contact info**

Airport Services are your best bet. Try them on **+49 7541 284 388** / [info@handling-fdh.de](mailto:info@handling-fdh.de)

- **Some operational info**

You have a **7730' (2356m) runway** with an ILS either end. There is a lot of terrain around here though, and the airport elevation is 1368' so watch out.

Open 0500-2100z weekdays, and 0800-1900z on weekends, with overtime available on request. **PPR will be required** for stays of more than 90 minutes.

Parking should be possible, but expect to be repositioned for parking and servicing.

## **LSZR/St.Gallen Altenrhein**

A decent option if you can fit on their shorter than other airports runway.

- **Some contact info**

Get in touch with the airport directly for support. You can find them on **+41 71 858 5165** / [c-office@peoples.ch](mailto:c-office@peoples.ch)

- **Some operational info**

You've only got **4774' (1455m)** to play with here. There is an **ILS to 10, but it is 4°**, and there is not published approach for 28. All this is because of the terrain in the south with MSAs of 10,200' and 11,400' to look out for as well as an elevation on 1306'.



BizAv is their business

## **Back to Zurich.**

Zurich always has certain charges and restrictions in place, even when big events like the WEF aren't taking place.

## **Charges**

- Landing charged, based on your weight
- Noise supplement charge, that varies depending on whether you disturb the peace during the day or the night
- An Emission charge based on amount of nitrogen oxide you emit
- Parking charges based on how much you might weigh, and time spent parked there
- Passengers, security and mobility support charges for passengers
- Freight charges

All the details of all the charges are contained in their Big Document on Charges Regulation. Which you can read here (although this only runs until 1 April and they don't seem to updated it yet.)

## **Anything else?**

Yeah, slots. You need 'em. Best sorting it via your handling agent.

## **Permits (in general)**

Landing permits are not required for private GA/BA flights to Switzerland. You'll only need a landing permit if you're operating a charter flight on an aircraft not registered in the EU. For that, email the authorities direct at: [trafficrights@bazl.admin.ch](mailto:trafficrights@bazl.admin.ch)

## **Operational Stuff**

Zurich is a relatively challenging Cat B airport. We made a little briefing on it here to help.

## **Tell us...**

If you know of other options, let us know and we will share the info - [team@ops.group](mailto:team@ops.group)

---

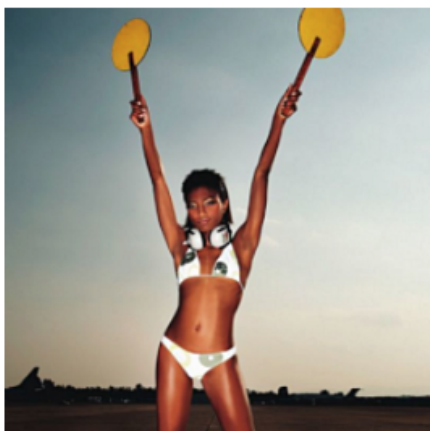
# **Monday Briefing: Your Attention Please, US Airport Disruptions**

Cynthia Claros  
11 April, 2022

# INTERNATIONAL BULLETIN

ISSUED BY FLIGHT SERVICE BUREAU

SITA HNLFSXH AKLFSXH AFTN KMCOXAAL  
EMAIL INTL.DESK@FSBUREAU.ORG



**Your Attention Please** 18JAN As we reach 25,000 readers, **your help is requested.** We want to make sure we're delivering the best bulletin to you, so if you have a few moments, please **answer 3 questions.** You'll receive a gift token for use in the **Flight Service store.**

**US Airport Disruptions** 18JAN Airport workers plan disruptions in nine U.S. cities on MLK Day (Monday). Watch out for industrial action in Boston, New York City, Newark, Philadelphia, Miami, Chicago, Portland, and Seattle.

---

**FJDG/Diego Garcia** is closed from 15JAN to 19JAN.

**WSSS/Singapore** 2016 Airshow takes place 16-21FEB at Changi. Planning for parking, accommodation and when required permits should be arranged as early as possible.

**LTBA/Istanbul** is expecting a significant snow event on Monday. Commercial carriers have already preemptively canceled flights until the storm passes. Please check latest weather advisories and plan accordingly.

**Kxxx/United States** Airport workers plan disruptions in nine U.S. cities on MLK Day (Jan 18th). Watch out for industrial in Boston; New York City; Newark, N.J.; Philadelphia; Miami; Chicago; Portland, Oregon; and Seattle.

**LSZH/Zurich** Delays this week due to World Economic Forum in Davos.

**KMCO/Orlando** A two-phase runway construction project at is scheduled to begin 12JAN and continue into April 2016. Runway 17R/35L will be closed during phase one, and Runway 18L/36R will close during phase two.

**TBPB/Bardados** is closed nightly from 0400-1000Z UTC due to work on the ATS building from Jan 13th to Jan 28th. Airspace is also downgraded to Class G to FL245 on the 13th, 14th, 20th, 21st, 27th and 28th. Please see NOTAM A0030/16 for full details.

**URSS/Sochi** reports of low fuel availability, check with Airport for latest, tankering recommended



regardless.

**NZxx/New Zealand** The Aviation Security Officers Union advised on 14JAN of a possible strike. The union identified no date for the possible strike. Airport officials stated that if security officers strike, the air transportation will come to a standstill nationwide.

**VIDP/New Delhi** Airspace closed to commercial flights for more than an hour every day beginning next week in view of the Republic Day celebrations. 1035-1215 local, on 19-24JAN, and 26JAN.

**West Africa** The World Health Organization announced last week that the Ebola epidemic in West Africa is officially over. For the first time since the outbreak began in December 2013, all three of the hardest-hit West African nations — Liberia, Guinea and Sierra Leone — have had zero reported cases of Ebola for 42 days in a row, a period equal to two full incubation cycles of the virus.

**VHHH/Hong Kong** According to reports on 13JAN, thieves targeted a South African national aboard South African Airways flight 286 from Johannesburg to Hong Kong on 21 December. The victim stated that a fellow passenger alerted him that other passengers had taken his baggage while he was sleeping and rummaged through it in the aircraft lavatory. When the victim subsequently inspected his baggage, he found that the lock had been broken and foreign currency worth approximately \$1200, as well as items of jewelry, were missing. Hong Kong police officers searched several suspects when the aircraft landed, but the stolen items were not found. This type of crime is reportedly a significant problem on international flights bound for Asian destinations, particularly Hong Kong. According to statistics released by Hong Kong authorities in August 2015, a total of 45 in-flight robberies had been reported up to that point in 2015; 48 cases occurred in 2014. Cash, jewelry and smartphones are especially targeted.

**Lxxx/Turkey** Foreign nationals filing certain visa applications at a consular post must now upload their application documents online through the Turkish electronic visa application system prior to appearing at a consular post. Applicants must still submit their visa application forms and supporting documents in person at a Turkish consular post. This system does not impact electronic visas for those nationals eligible for E-visas, but does impact business visitors who must acquire a consular visa.

**Int Ops Bulletin** As we reach 25,000 readers, your help is requested. We want to make sure we're delivering the best bulletin to you, so if you have a few moments, please answer 3 questions. You'll receive a gift token for use in the Flight Service store.

[View the full International Bulletin 18JAN2016](#)

---

## Monday Briefing: Kanlaon Volcano Eruption, Colombia Permit requirements

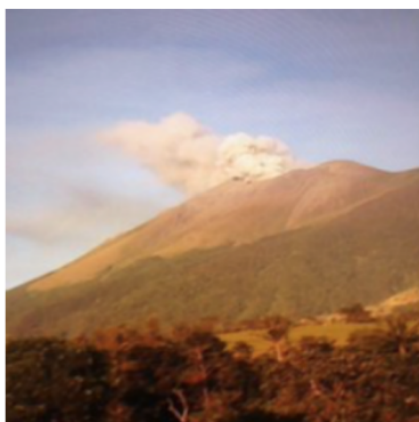
Declan Selleck  
11 April, 2022

# INTERNATIONAL BULLETIN

ISSUED BY FLIGHT SERVICE BUREAU

SITA HNLFSXH AKLFSXH AFTN KMCOXAAL

EMAIL INTL.DESK@FSBUREAU.ORG



**Kanlaon Volcano Eruption 28DEC** The Kanlaon Volcano in the Philippines erupted on 27DEC, with an initial ASHTAM issued up to FL260. Extreme caution advised for airways B472, B473, and W7. You can get the latest updates through the Tokyo VAAC.

**Updated Colombia Permit requirements 22DEC** For Non-Commercial aircraft, ie. Ferry flights, General Aviation – authorisation is required only if stopping in Colombia longer than 48 hours, or operating to more than 1 Colombian Airport. **Updated list of document requirements** in AIP Supp 22/15 issued 22DEC.

---

**New Years closures.** Check opening times carefully during the next week, as many major airports and FBO's have closures, especially on 31DEC/01JAN.

**Kxxx/USA** Scattered thunderstorms, some of which will be strong to severe, will move east across Kentucky, Tennessee, eastern Mississippi, Alabama, western Georgia and the Florida Panhandle. Heavy rain will once again trigger flash flooding over portions of the South. Airports in the risk area include KATL/Atlanta, KBNA/Nashville, KMEM/Memphis, KCHA/Chattanooga, KBHM/Birmingham, KMOB/Mobile and KLEX/Lexington.

**FYWH/Windhoek, Namibia** has new opening hours from 23DEC, 0700-2000LT Daily.

**HSSS/Khartoum, Sudan** has no Jet A1 available to Ad-hoc operations between 27DEC and 05JAN. Carry return fuel or choose another tech stop.

**MUFH/Havana FIR, Cuba** Airspace restrictions in place 23DEC-31DEC due to staff shortages, airways UB760 and UL210 are northbound only, and between 1400-0100Z daily, all aircraft will be spaced 25nm apart through the Havana FIR, regardless of altitude.

**OAKB/Kabul, Afghanistan** a car bomb detonated near Kabul International Airport at approximately 0800 local time (0330 UTC) today. Taliban militants took responsibility for the attack.

**UIBB/Bratsk** continues to have fuel supply issues, fuel limitation extended to 12JAN

**LSZH/Zurich** has parking issues for Private flights, the Airport Company will generally only accept 6 hours ground time. Extended stays will require a reposition to another airport, limitation until 06JAN.

**Space Weather/Polar Ops** 55% risk of R1-R2 Minor to Moderate Radio Blackout risk predicted through Dec 30th. For the most up to date information please see the NOAA Space Weather Dashboard for Aviation.

**LTFJ/Istanbul** A Kurdish militant group has claimed responsibility for an attack at Istanbul's second airport that killed 1 person, and threatened more assaults.

**FAA/North Atlantic** Aircraft operators crossing the North Atlantic have been required to include the aircraft registration and six-character hexadecimal code that is the aircraft's address in Item 18 of their ICAO flight plans. However, an FAA review of flight plans filed during a one week period revealed that many operators were not meeting this requirement. Therefore, the agency has issued Information for Operators (InFO) 15015, which emphasizes the importance of providing the required information in the proper format.

**Vxxx/India** Signaling a major shift in granting air traffic rights, the government is looking at restricting the number of landing points for overseas airlines irrespective of their seat entitlements. A senior Civil Aviation Ministry official said it was looking at restricting the ports of call given to foreign airlines under bilateral rights, while remaining flexible on seat entitlements.

**VAJB/Jabalpur** The Aviation regulator DGCA has suspended the license of Jabalpur airport following an incident early this month, in which a herd of wild boars marched onto the runway during the taxiing of a commercial aircraft. Following suspension of its license, no flight operations can take place from Jabalpur airport, sources said adding that the AAI has been told to remove deficiencies including proper fencing of the operational area.

**RKxx/South Korea** South Korea's Ministry of Health and Welfare has formally declared an end to the Middle East Respiratory Syndrome (MERS) health threat on December 23. According to the Ministry of Health and Welfare, its decision follows World Health Organization. MERS was first confirmed in South Korea on 20MAY, and the last fatality from MERS-related complications in the country occurred on 25NOV.