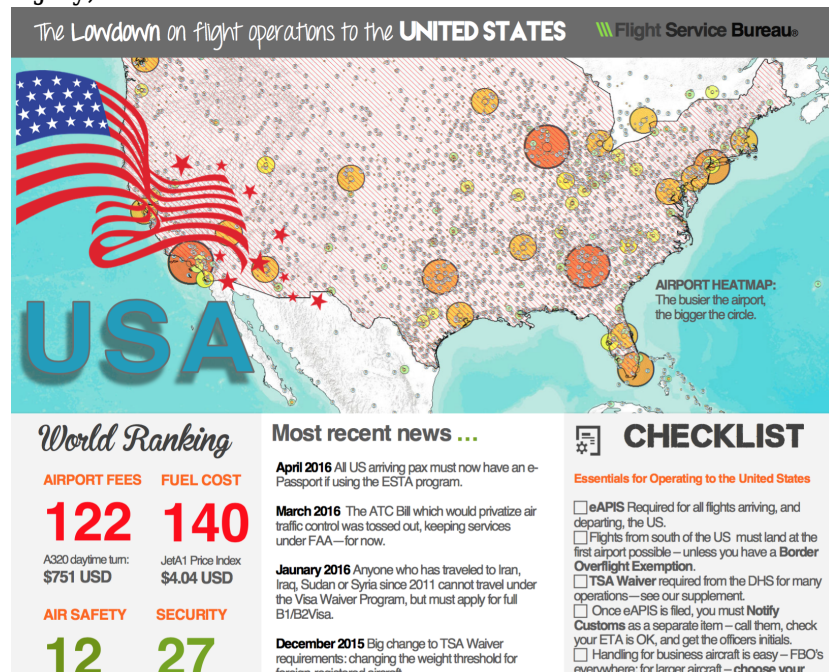


# USA - the Lowdown on Flight Ops

Declan Selleck

5 July, 2016



We just published our latest **Lowdown** – this one is for the USA. Heaps of good information on eAPIS, new TSA Waiver rules, Border Overflight Exemption, Customs Notifications, Importation, Special Route Clearances, ESTA, Visas, and Special Flight Authorizations.

You can get these Lowdowns by joining **OPSGROUP** – you can get a single or team membership. If you'd like the US Lowdown, we'll gladly send a copy your way, just email us.

---

## Midweek Briefing 01JUN: EASA Updates 'Suspect Aircraft' Guidelines, 8th French ATC Strike

Cynthia Claros

5 July, 2016

# INTERNATIONAL BULLETIN

ISSUED BY FLIGHT SERVICE BUREAU

SITA HNLFSXH AKLFSXH AFTN KMCOXAAL

EMAIL INTL.DESK@FSBUREAU.ORG



**EASA Updates 'Suspect Aircraft' Guidelines** 01JUN EASA has published new guidelines for inspectors to assess which aircraft should be prioritised for SAFA ramp checks in Europe and SAFA compliant states. Read the article.

**8th French ATC strike this weekend** 01JUN Notification has been given by French ATC Unions of a Three Day Strike this coming weekend from Friday-Monday, starting at 0400Z Friday 03JUN. Read the article.

---

**ZZZZ/China** The new 144 hour visa-free rule is extended to Nanjing Lukou Airport of Jiangsu, Hangzhou Xiaoshan Airport of Zhejiang, and all air, sea and railway ports of Shanghai, including Pudong Airport, Hongqiao Airport, Shanghai Port International Cruise Terminal, Wusong Passenger Transport Center and all railway stations in Shanghai.

**CYMM/Fort McMurray** is scheduled to reopen 10JUN to regular commercial operations. The airport has been closed to normal traffic due to a significant forest fire.

**MMAA/Acapulco** after an outage lasting several years the ILS for RWY 10/28 is operational again.

**KSEA/Seattle** has runway 16C/34C closed until 27JUN for repairs. ATC initiatives possible through the construction.

**EINN/Shannon** and **EICK/Cork** will be testing a new "Remote Tower" system from 06JUN until September, where at quieter times the controller in Dublin will provide the ATC service to flights at Shannon and Cork. The IAA says airspace users will not notice the change. We think you might.

**LFL/Lyon** will be re-numbering their runway to 17/35 from 18/36 in September.

**VOTP/Tirupati** will begin International operations beginning the end of June with flights to the U.S. The airport had recently upgraded their customs systems and other procedures.

**LZZZ/Mediterranean** Despite some reports, NATO operations in Libya appear unlikely. There are several new airspace NOTAMs, but is anyone still flying to Libya?

**LFZZ/France** due to ongoing protests at french oil refineries and fuel shortages the French CAA has

advised to tanker in as much fuel as possible to help mitigate any issues. Please check with local handlers for any specific fuel constraints.

**SPZZ/Ecuador** Volcano Sangay is producing ash that extends up to 20,000 feet. Movement is towards the west at 10 knots. Please check with the Washington VAAC for the latest advisories.

**LLBG/Tel Aviv**, Israel On 26-27MAY strike action in the form of a work go-slow took place. The slowdown has primarily affected outgoing flights by increasing the time between takeoffs, but it has been reported that if the slowdown continues it will begin to affect incoming flights.

**NVZZ/Vanuatu** 27MAY a 5.0 magnitude earthquake struck west of Vanuatu. The quake was centered approximately 60 mi/95 km northwest of Port Vila and was measured at a depth of about 6 mi/10 km. No tsunami warning has been issued.

**DAZZ/Algeria** At 0054 local time (2354 UTC) on 28MAY, a magnitude 5.2 earthquake struck approximately 35 mi/55 km southeast of Algiers, the capital of Algeria. The epicenter of the earthquake registered a depth of approximately 7 mi/ 12 km. Following the quake, there were no reports of injuries or damage.

**FNZZ/Angola** A yellow fever outbreak has caused 301 deaths so far this year. The number of suspected cases is 2,536. The outbreak began in Luanda and has since spread to areas throughout the country, particularly along the coast and in the central regions, despite a large-scale vaccination program.

**VDPP/Cambodia** Political tensions are high in Cambodia following contested national elections in 2013. Arrest warrants have been issued for the leaders of the opposition CNRP party and the situation is unpredictable. On 30 May police blocked roads in southern Phnom Penh to prevent opposition CNRP supporters from carrying out a planned protest march. Further disruption is possible if the remaining leader is arrested. The opposition party has announced it will hold mass, non-violent, demonstrations and a number of unions have said they will strike in support.

**LFZZ/France** Despite recent strikes, the French government has stated it will not back down from labor reforms despite street protests and refinery blockades. The CGT Union has threatened to disrupt the upcoming Euro 2016 soccer tournament if the government does not back down; however, after meeting with representatives of the oil industry, government officials stated that the situation at fuel depots is improving.

**Ramadan** starts on 06JUN, for one month. If you are operating to any Islamic countries, expect the usual slowdown in work, longer processing times for permits, and closures.

**OEZZ/Saudi FIR** Saudi Arabia has intercepted a ballistic missile that was fired from Yemen, after which Saudi aircraft bombarded the missile's platform. A Saudi official stated that the country may reconsider the kingdom's truce with Yemen, as a result of the strike. The missile launch was the second strike in May.

**RCZZ/Taiwan** On 31MAY, a 6.1 magnitude earthquake struck approximately 70 mi/115 km northeast of Taipei. The quake was measured at a depth of about 150 mi/240 km. There were no reports of damage, and no tsunami warning was issued.

**UKZZ/Ukraine** On 29MAY, attacks by pro-Russian rebels in eastern Ukraine, violating the ceasefire signed in February 2015, killed five Ukrainian military officers and wounded four others. The latest attacks follow a 24 May report released by Ukrainian authorities, stating seven soldiers were killed on that day, making it the deadliest day for Ukrainian forces since August last year.

**KZZZ/USA** The State Dept has issued a warning to arriving travellers this summer to make sure that they have all necessary documents to enter the United States – there have been multiple changes to the rules this year (see Active Bulletins below for more on this).

# Midweek Briefing 25MAY: Cairo airspace - GPS jamming, Australia: new RNP rules (again)

Cynthia Claros  
5 July, 2016

<b>INTERNATIONAL BULLETIN</b>	<b>ISSUED BY FLIGHT SERVICE BUREAU</b>
	SITA HNLFSXH AKLFSXH AFTN KMCOXAAL EMAIL INTL.DESK@FSBUREAU.ORG



**Cairo airspace - GPS jamming** 25MAY Egypt notified operators yesterday that GPS jamming is a concern to HECA/Cairo arrivals and overflights, and warned against conducting RNP/RNAV arrivals or approaches. Read the article.

**Australia: new RNP rules (again)** 25MAY A last minute relaxation by CASA has exempted Foreign private operators from having to be RNP2 compliant, ahead of many Nav aids being switched off on Thursday. Foreign Commercial operators have a two year window to comply. Read the article.

---

**LFZZ/France** A French national strike is being called for on 26MAY by the DNSA. French Strike Regulation plan will be applied from 26/0400 UTC to 27/0400 UTC. Monitor NOP.

**NTAA/Tahiti** may not have fuel available from 25-28MAY due to strike action.

**KZMA/Miami FIR** A Falcon 9 rocket is set for launch from Cape Canaveral on 26MAY, a 2-hour launch window opens at 2140Z. 27MAY is the back-up day for the launch. Check KZMA/KZJX FIR NOTAM's for restrictions.

**VECF/Kolkata** has updated SATCOM and local phone numbers: Kolkata Oceanic is at 441921 or

00870762092876 and Area Control is at 441902 or 00913325119520. The Satcom numbers are routed through the public telephone system.

**EBLG/Liege** Not available from 1530-2000 due to Staffing issues (which may recur later in the week).

**MZZZ/Mexico** A new law in Mexico expands the business, tourist and transit visa exemption for up to 180 days to visa nationals with a Canadian, Japanese, Schengen or UK visa, effective immediately, and to visa nationals who are permanent residents of Chile, Colombia or Peru effective July 1. APEC Business Travel Card (ABTC) holders, certain airplane crew members remain eligible for this exemption.

**MROC/San Jose** On 21MAY Mount Turrialba erupted. The volcano is located approximately 30NM west of MROC. Some flights were cancelled in response to the eruption. Please monitor the **Washington VAAC** for further advisories.

**EZZZ/Europe** Eurocontrol has confirmed the date of 01JAN18 for all aircraft to be 8.33 kHz compliant. Currently 8.33 kHz is required only above FL195 but as of 01JAN18 it will be required below FL195 to the surface. Europe has an ongoing shortage of voice communication frequencies.

**KZZZ/USA** The U.S. Department of Transport has banned e-cigarettes from checked airline baggage over fire risks. This includes both passengers and flight crew.

**USHH/Khanty-Mansiysk** is closed until 30MAY at 1500Z due to the runway being repaired.

**FACA/Cape Town FIR** CPDLC/ADS-C is not available until 31MAY.

**LLLL/Tel Aviv FIR** has updated their security procedures for entering the the LLLL FIR. Please see **AIC 2/16**.

**VGEG/Chittagong** Flight operations at Chittagong airport have resumed after suspension due to cyclone Roanu.

**OPZZ/Pakistan** has issued **AIC 03/16** covering NAVAID outages due to scheduled maintenance until June.

**NZQN/Queenstown** New Zealands most challenging airport is now open for night traffic but only for airlines that meet CAA approval to operate to very specific RNP procedures. The first are Air New Zealand and Jetstar.

View the full International Bulletin 25MAY2016

---

## US, Canada may lose EU visa rights, More Free Route Airspace for Northern Europe

Cynthia Claros  
5 July, 2016

## INTERNATIONAL BULLETIN

ISSUED BY FLIGHT SERVICE BUREAU

SITA HNLFSXH AKLFSXH AFTN KMCOXAAL  
EMAIL INTL.DESK@FSBUREAU.ORG

expect. time	destination	airline
13.25	RHODES	
13.35	MUNICH	
13.40	GENEVE	
13.45	PARIS	
13.55	ROME	
14.00	NAPLES	
14.05	MADRID	
14.15	TUNIS	
14.25	ZURICH	



**US and Canada may lose EU visa rights** 13APR The European Commission published warning on 12APR that visa-free travel by US and Canadian citizens to Europe is at risk, due to the lack of a full reciprocal arrangement for EU citizens. **Read the full article.**

**More Free Route Airspace for Northern Europe** 13APR Sweden, Finland, Denmark, Estonia and Latvia will be increasing free route airspace from 23JUN16. This allows operators to utilize User Preferred Routes above FL285. Details of the implementation can be found through the AIC A3/2016 from Sweden.

**RKSS/Gimpo** is set to open South Korea's first purpose-built FBO next month. It includes a passenger terminal with customs and a large hangar that can accommodate up to eight large jets. The FBO is a partnership between Korea Airport Crop and Avjet Asia.

**EBBR/Brussels** Controversial ATC Strike occurred without notice yesterday 12APR, restricting traffic at EBBR and in Belgian Airspace. Eurocontrol advises 4 of 6 sectors operational Wednesday 13APR, at this stage no significant further effect likely.

**KZZZ/USA** New security measures in the U.S. are being enacted in response to the Brussels Airport Bombings. The Senate voted to increase the vetting of airport workers, expand the number of TSA viper teams that sweep through airports unannounced to stop and search suspicious people, and double the number of TSA's bomb-sniffing dogs. Also, local law enforcement may also conduct random checks of cars and taxis heading towards the airport.

**KZZZ/USA** the FAA has provided its NextGEN update for 2016. It highlights all the completed items along with the expected achievements for the year. You can find all the info through the NextGEN website.

**EZZZ/Europe** as of 05APR Eurocontrol as been publishing Target Time information together with Calculated Take-off time (CTOT) in the Slot Allocation and Slot Revisions Messages (SAM and SRM). The purpose of the initiative is to provide flight crew with operational awareness of their flight's planned time at the congestion point in the air, rather than solely providing the corresponding delayed departure time (CTOT) to implement ATFM measures.

**EGZZ/United Kingdom** A large scale military exercise named 'Joint Warrior 16-1' has been taking place

since 09APR16 and will last until 22APR06. EGPX and EGTT FIR/UIRs are affected. However, low to medium impact on airline operations is expected.

**LFZZ/France** beginning 03MAY16 France will be implementing CPDLC services within LFFF, LFEE, LFRR, LFMM and LFBB FIR's. The full details of the IOC can be found in AIC 10/16.

**EGGX/Shanwick** OCA implemented a trail of 5 minute separation minimum between aircraft which are following the same track, irrespective of whether they are East or Westbound. Full details can be found through AIC Y 022/2016.

**LOWW/Vienna** every weekend until 24MAY16 LOWW will be operating under single runway ops beginning 2100 on the Friday until 1600 on the Sunday. The closures are weather dependent and the closure will be recalled if the forecast calls for the use of runway 11/29. In any single runway scenario use at Vienna delays are a guarantee.

**OEZZ/Saudi Arabia** The U.S. State department updated a travel warning to Saudi Arabia on 11APR16. It outlines the risk to travellers due to an increased risk with the threat of terrorism.

**SKZZ/Colombia** The U.S. State department has updated the travel warning to Colombia. They have actually improved the travel warning as the security in the country has improved significantly in recent years. Foreigners should still exercise caution though.

**LTCC/Diyarbakir** is now able to handle international flights due to a new terminal building that has opened.

**OLBA/Beirut** two airport employees were detained on suspicion of terrorist activity involvement on 08APR16. Traces of explosives and a handgun were found on the two individuals.

**DIAP/Cote D'Ivoire** has reduced the passenger departure tax by 50% and have also removed the solidarity contribution tax levied on airline tickets.

**GABS/Mali** began renovations last month (MAR16) to increase the airports capacity to handle 1.5 million passengers which is up from the 800,000 annual passenger traffic. The project is expected to be completed by the end of the year.

View the full International Bulletin for 13APR2016

---

## January 2016 US Visa Waiver Changes

Declan Selleck  
5 July, 2016



### **When do these changes come in to effect?**

The “four countries” restriction is effective 20DEC2015; the passport requirement 01APR2016.

### **Who is prohibited from traveling under the Visa Waiver Program by the new law? Are there any exceptions or waivers from the restrictions?**

The new VWP travel restrictions apply to:

- Nationals of VWP countries who, since **01MAR2011**, have traveled to **Iran, Iraq, Sudan, Syria** or any other country of concern designated by the Department of Homeland Security; and
- Dual nationals of a VWP country and Iran, Iraq, Sudan, Syria or any other country of concern designated by the Department of Homeland Security.

If you have traveled to a country of concern since March 1, 2011, you are prohibited from traveling under the VWP.

If you are a dual national of a VWP country **and** Iran, Iraq, Sudan, Syria or any other country or area deemed to be of concern by the Secretary of Homeland Security, you are prohibited from traveling under the VWP. There is no exception to this prohibition.

If you are barred from the VWP travel and do not qualify for an exception or a waiver, you must obtain a B-1/B-2 visa at a U.S. consulate before traveling to the United States for business or tourism.

### **What are the new passport requirements for travel under the Visa Waiver Program? How do they differ from previous VWP requirements?**

Starting **01APR2016**, all VWP travelers (including infants and children) must present an e-Passport – i.e., a travel document that is machine-readable and contains an electronic chip – when traveling to the United States.

Most VWP travelers have been required to present an e-Passport when entering the United States for some time. However, some nationals of longtime VWP member countries whose passports were issued before

October 26, 2006, have been able to travel to the United States on the VWP even if they do not have an e-Passport.

After March 31, 2016, all VWP travelers must present an e-Passport. E-Passports contain an integrated computer chip that stores the passports holder's biographic data, a biometric identifier, a digital signature and a unique chip identification number. The data on the chip includes two lines of machine-readable data as well as facial recognition details. The chip can also be scanned to match the identity of the traveler to the passport.

These passport requirements apply only to travelers under the Visa Waiver Program. Foreign nationals who have a U.S. visitor visa or another type of U.S. nonimmigrant visa stamped in their passport are not required to comply with these revised passport requirements.

### **What is the Visa Waiver Program and who is eligible to participate?**

The Visa Waiver Program permits eligible citizens of designated countries to travel to the United States for up to 90 days for business or pleasure without first having to obtain a visitor visa at a U.S. consulate. In order to use the VWP, travelers must obtain Electronic System for Travel Authorization (ESTA) clearance.

Citizens of the following 38 countries are eligible to participate in the VWP: Andorra, Australia, Austria, Belgium, Brunei, Chile, the Czech Republic, Denmark, Estonia, Finland, France, Germany, Greece, Hungary, Iceland, Ireland, Italy, Japan, Latvia, Liechtenstein, Lithuania, Luxembourg, Malta, Monaco, Netherlands, New Zealand, Norway, Portugal, San Marino, Singapore, Slovakia, Slovenia, South Korea, Spain, Sweden, Switzerland, Taiwan, and the United Kingdom.

---

## **Monday Briefing: New Overflight Map, Typhoon Melor affecting the Philippines**

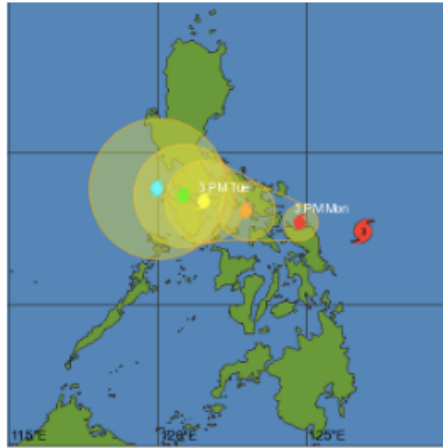
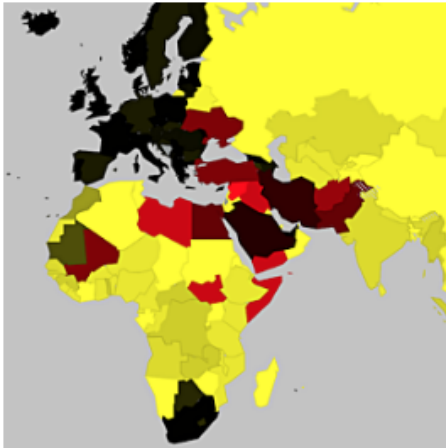
Cynthia Claros  
5 July, 2016

# INTERNATIONAL BULLETIN

ISSUED BY FLIGHT SERVICE BUREAU

SITA HNLFSXH AKLFSXH AFTN KMCOXAAL

EMAIL INTL.DESK@FSBUREAU.ORG



**New Overflight Map** 14DEC The Airline Cooperative and Flight Service Bureau have finalised the initial version of an online Overflight Permit and Security Map, showing current airspace and security warnings worldwide, together with county by county information on permit requirements. The map is available at all AO's at [fsbureau.org/map](http://fsbureau.org/map). Read more below.

**Typhoon Melor affecting the Philippines** 14DEC the center of Typhoon Melor is forecast to move into the central Philippines (near southeastern Luzon) Monday evening local time as the equivalent of a Category 4 hurricane. The current forecast path indicates the Typhoon moving inland towards Legazpi City, Sorsogon City and Gubat are some of the locations. For more details visit the **Joint Typhoon Warning Center (JTWC)**.

**EGGX/Shanwick/CZQX/Gander** The technical issues affecting the implementation of the RLAT/Reduced Lateral Separation tracks have reportedly been finally resolved and the first publication of the "Half Tracks" is now scheduled for **today**, 14DEC2015.

**LFRR/Brest FIR** Most sectors regulated day and night due to new software (ERATO) implementation. High delays. The worst delays are in the following sectors: LFRMZSI, LFRJ, LFRN, LFRVKWS. German departures to USA are advised to consider routing North of Brest airspace via NIK (or North of).

**OAKN/Kandahar** A Taliban attack took place at the airport on 08DEC, with close to 50 fatalities. The attack was a major security breach, as heavily armed militants were able to enter a fortified area supposed to have been made secure by the Afghan National Security Forces (ANSF).

**The ICAO Council** adopted a new tracking standard for certain international flights that requires crews to report their aircraft's positions at least every 15 minutes. It will become effective in March 2016 and applicable 08NOV2018. The new requirement also will be formalized as Amendment 39 to Annex 6—Operation of Aircraft, Part I. Only aircraft with a maximum takeoff weight of more than 59,000 pounds and a passenger seating capacity of more than 19 are affected by the rule. Also, the requirement applies to over oceanic and other remote areas, and where air traffic service is obtaining position information greater than 15-minute intervals.

**Central/South America** On 10DEC2015, the U.S. Centers for Disease Control and Prevention (CDC) issued a Level 1 Travel Warning for Mexico, El Salvador, Guatemala, Panama, Brazil, Columbia, Paraguay,

Suriname and Venezuela, advising travelers to protect themselves against the Zika Virus. Zika is a viral disease transmitted by the Aedes aegypti mosquito, which also carries the dengue and chikungunya viruses.

**KSAN/MMTJ San Diego/Tijuana** A new pedestrian bridge spanning the U.S.- Mexico border now connects KSAN/San Diego and MMTJ Tijuana. The airport terminal, called Cross Border Xpress, opened last Wednesday and will improve travel for fliers going from Tijuana to the United States.

**Kxxx/United States** The U.S. House of Representatives voted in support of a measure to tighten control on the Visa Waiver Program, which allows travelers of certain nationalities to enter the U.S. without a visa. Under the new measure, the U.S. will now require visas for anyone who has traveled to Iraq or Syria in the past five years. The measure requires that all countries participating in the visa waiver program share intelligence with the U.S. regarding possible extremists.

**FVFA/Victoria Falls Intl** A new international passenger terminal opened at Victoria Falls International Airport (FVFA/VFA) on 02DEC.

**Zxxx/China** Chinese officials lifted a red alert they had put in place on 7 December after heavy smog greatly reduced visibility throughout the city and increased health risks for anyone venturing outdoors. The smog was so heavy it affected operations at nearby airports. Heavy smog is an annual occurrence in northeast China, and the problem is most severe during the winter months, when the morning fog becomes dense and power plants run at a higher rate to produce electricity for in-home heating. Because of this, you should expect similar alerts to be issued periodically throughout the remainder of the winter.

**Yxxx/Australia** FIR & Oceanic Changes. REF: AIC H24/14. ADS-B, GNSS and Mode S Transponder Equipment Mandates. Aircraft must be equipped with the mandatory avionics by certain dates. First Implementation date is 04FEB2016.

**Cxxx/Canada** Nav Canada has issued AIC 30/15 which addresses a proposal for amendment to the International Civil Aviation Organization (ICAO) Global Operational Data Link Document (GOLD) to optimize high frequency (HF) radiotelephony use in the North Atlantic (NAT) Region. The change eliminates NAT Region specific RT phraseology that has been made redundant with the availability of flight data to radio operators.

**HCMM/Mogadishu Aden Adden, Somalia** On the evening of 13DEC2015, African Union (AU) peacekeepers thwarted a suspected al-Shabaab attack on the Airport. The assailants, who were on speedboats, reportedly attempted to stage a seaborne attack on the facility. Heavy gunfire was reported throughout the encounter. Aden Adde International Airport has not been operational during nighttime hours since 1991. Currently, the airport and its compound host foreign embassies and delegates.

**VOMM/Chennai** Airport has resumed full operations after recovering from major flooding last week.

**View the full International Operations Bulletin for 14DEC2015**

---

# Monday Briefing: Thanksgiving ATC Traffic Plan, New Missiles Warning - Baghdad FIR

Cynthia Claros  
5 July, 2016

<b>INTERNATIONAL BULLETIN</b>	<b>ISSUED BY FLIGHT SERVICE BUREAU</b>
	SITA HNLFSXH AKLFSXH AFTN KMCOXAAL EMAIL INTL.DESK@FSBUREAU.ORG



**Thanksgiving ATC Traffic Plan** 23NOV The FAA have published details of Traffic Management plans for the east coast of the US during the Thanksgiving holidays, effective 24NOV to 30NOV. The highest volume days will be 25NOV and 29NOV, expect delays on north/south routes to Florida during this period. Read the full details of the airspace initiatives [here](#).

**New Missiles Warning - Baghdad FIR** 23NOV A NOTAM issued today by the Iraqi CAA indicated anticipated cruise missile traffic across the FIR from the Caspian Sea, leading also to the closure of Erbil Airport until Wednesday. See below for further.

---

**EGGX/CZQX Shanwick/Gander** The new NAT Track Structure and Reduced Lateral Separation Minima procedures, initially planned for 12NOV, are now re-planned for Monday 30NOV, following the resolution of computer issues related to the new format.

**UIII/Irkustk** will close the main runway on 01, 08, 15 and 22DEC from 1210-1450Z for repairs, not available as alternate during these times. As this is a common Polar alternate, check NOTAMS for current information.

**UEEE/Yakutsk** will close 31DEC-02JAN, not available for movements or as alternate after 0500Z on 31DEC.

**EINN/Shannon** has a runway closure on 23NOV from 2345Z-0500Z, not available as alternate. Caution before using as NAT alternate on this date. If another ETOPS alternate is required, consider EIDW/Dublin, EGAA/Belfast or EGPF/Glasgow.

**ORBB/Baghdad FIR** Iraq published the following NOTAM (A0413/15) effective today 23NOV CRUISE MISSILES CROSSING NORTHERN PART OF IRAQ, FROM CASPIAN SEA TO SYRIA, NORTH OF REP OTALO, NO CRUISE MISSILE OPS IN THE REST OF ORBB FIR, FLIGHTS OPERATING AT FL310 OR ABOVE AND FLIGHTS OPERATING AT ORBI, ORNI AND ORMM NOT AFFECTED. SFC - 30000FT MSL, 23NOV 0500Z - 25NOV 0500Z. In addition Erbil and Sulamaini airports will be closed until Wednesday.

**OLBA/Beirut FIR** Initially issued a NOTAM on 20NOV, closing a large part of the FIR including routes G2/UG2, R219/UR219, L620/UL620, in response to Russia's request for a training exercise in their airspace. Subsequently the government reversed their decision, and the NOTAM was cancelled on 22NOV, reference A0293/15.

**BKPR/Kosovo** Airspace to the north of Kosovo was released from UN/KFOR restriction, to Serbian control, on 20NOV, meaning that arrivals and departures from Europe will no longer have to make a circuitous approach and can depart to the north. Procedures are not yet in place, but technically the airspace is no longer restricted. For most operators this will see a route saving of up to 100nm.

**GABS/Bamako, Mali.** With great sadness we must report that 6 crew members of Volga-Dnepr Airlines were amongst those killed in the attack on the Radisson Hotel in Bamako on Friday.

**KXXX/USA** Thanksgiving Holidays 26NOV and 27NOV leading to increased traffic flows across US, but anticipated reduced traffic across the NAT region.

**KXXX/USA** Runway Closures DTW-RWY 4L/22R CLOSED SEA-RWY 16C/34C CLOSED LAS-RWY 7L/25R CLOSED LAX-RWY 6R/24L CLOSED 23/1430

**FJDG/Diego Garcia** Parking Stands A6-11 and B4-8, as well as some taxiways, closed for repair effected 19NOV.

**NWWW/Noumea** continues with runway closures 23-26NOV affecting the main runway.

**FABL/Bloemfontein,** South Africa will not accept widebody diversions 19-26NOV.

**GCCC/Canarias FIR** will have a HF outage today 23NOV from 0900-1500Z. In case of non-contact, use CPDLC, or HF via Santa Maria or Sal for relay.

**LIXX/Italy** ATC Strike planned for 24NOV 1200-1600Z has been postponed, refer NOTAM A8227/2015.

**HLLL/Tripoli FIR** Additional new southbound route available via RASNO UY751 LOSUL, for those operators using the airspace.

**LFEE/Rheims** ATC Strike 23NOV/0500Z - 28NOV/0500Z Confirmed for Monday only at this time - NOTAM F2093/15 refers. AOs are advised to reroute, avoiding LFEE area of responsibility. Those that are not able to reroute may expect delay.

**RJJJ/Japan FIR** will have a comms outage affecting Flight Plan filing on 25NOV, from 1410-1720Z. To avoid delays and missing plans, Flight Plans should be filed earlier than normal to RJJJZQZX for overflights and landings. Refer to J7545/15 for specifics.

**SPJC/Lima, Peru** Effective 12NOV the Location Indicator for the main airport in Lima, Jorge Chavez, changes from SPIM to SPJC.

**TTZP/Piarco ATC** has issued a request for operators to include KNYCZZZX when filing plans entering New York Oceanic airspace from the Piarco FIR, or operating east of 58W within the Piarco FIR, in order that New York has details of the aircraft.

With regard to business aviation, but equally interesting for airlines and private operators, the NBAA has

published a useful list of the Top10 Issues for International Operators in 2016.

**View the full International Operations Bulletin for 23NOV2015**

---

# Monday Briefing: NAT Tracks Change Postponed, KLAS/Las Vegas restrictions

Cynthia Claros  
5 July, 2016

<b>INTERNATIONAL BULLETIN</b>	<b>ISSUED BY FLIGHT SERVICE BUREAU</b>
	SITA HNLFSXH AKLFSXH AFTN KMCOXAAL EMAIL INTL.DESK@FSBUREAU.ORG



**NAT Tracks Change Postponed 16NOV** The planned implementation of reduced separation in the Organised Track System (OTS) has been postponed. During final testing, a software issued was identified by ATC, and as a result the previous track structure remains unchanged. New waypoints introduced on 12NOV are useable. A revised implementation date is expected to be announced today, 16NOV.

**KLAS/Las Vegas restrictions 17NOV** Increased traffic from Monday 16NOV due NBAA Conference. Special Procedures in effect from 14NOV-23NOV affecting KLAS, KHND, and KVG, refer to this NBAA link for details. If you are visiting the NBAA Conference, you can meet the Flight Service Bureau team at stand C12050 in the Central Hall, and collect your free show pack.

---

**KAUS/Austin** A technical problem with ATC equipment in the Austin Tracon will likely lead to delays today; service is being provided by Houston Centre instead, with a Ground Delay Program planned to manage capacity.

**KLAS/Las Vegas** Increased traffic from Monday 16NOV due NBAA Conference. Special Procedures in effect from 14NOV-23NOV affecting KLAS, KHND, and KVG. Refer to

<https://www.nbaa.org/events/bace/2015/air-traffic/>. If you are visiting the NBAA Conference, you can meet the Flight Service Bureau team at stand C12050 in the Central Hall, and collect your show pack (you can reserve one **here**).

**KXXX/USA** Several incidents reported of laser beams pointed at aircraft, on 13NOV Southwest and American were targeted at KPHX/Phoenix, and on 11NOV three aircraft at KDAL/Dallas Love were illuminated.

**KXXX/USA** Runway Closures BWI-RWY 10/28 CLOSED SEA-RWY 16C/34C CLOSED LAS-RWY 7L/25R CLOSED

**KXXX/USA Snowbird 2015:** The FAA have published details of Traffic Management plans for the east coast of the US during the Thanksgiving holidays, effective 24NOV to 30NOV. The highest volume days will be 25NOV and 29NOV, expect delays on north/south routes to Florida during this period. Read the full details of the airspace initiatives [here](#).

**EINN/Shannon** Has an overnight runway closure. from 17NOV-20NOV 2300-0500Z for essential maintenance. If another ETOPS alternate is required on these nights consider EIDW/Dublin, EGAA/Belfast or EGPF/Glasgow.

**LFXF/France** A Notam issued Friday (A4850/15) regarding Border Controls remains in place, in practice the Notam is a reminder to airlines of existing requirements only. Expect delays due security checks at all French Airports, and many closures of public buildings and transport systems in France.

**VLVT/Vientiane, Laos** has reopened after a runway closure on 13NOV due to a disabled aircraft. An MA60 had aquaplaned and partially blocked the runway.

**MNXX/Nicaragua** closed its border with Costa Rica on Sunday 15NOV in response to the wave of Cuban migrants moving northward to the United States. Costa Rican officials had previously issued transit visas to approximately 1,200 detained Cuban refugees at the Panamanian border. One Cuban migrant stated that there were approximately 2,000 Cubans waiting on the Costa Rican side of the Nicaraguan border.

**NFFN/Nadi, Fiji** Refurbished departure lounge opens today 16NOV; the government will spend another 105 million USD to upgrade the Airport further in the coming year.

**PAZA/Anchorage FIR** Two new waypoints have been added for Polar operations. Those waypoints are LETUN and BAREK.

**LFxx/France** ATC Industrial action planned for 17NOV has been cancelled.

**Llxx/Italy FIR** There has been a call for an Italian National Strike, including ENAV ATC personnel, on 24NOV 1200-1600 UTC. More information will be posted as soon as it is available.

**PLCH/Christmas Island** As per NOTAM A1581/15 Jet A-1 fuel limited in supply. Sched flights to minimize fuel uplift on arrival or maximize tankering into PLCH. Tech stops cannot be made. In effect until 04DEC.

**PKMJ/Marshall Island** Construction is planned at the eastern end of RWY25; authorities have notified expected delays of up to 30mins including airborne holding.

**FMEE/Reunion** Airport will be closed from 16NOV-28NOV on Mon, Weds, Fri for surface work. Airfield cannot be used as an alternate except in case of emergency. All traffic services will be provided normally for all aircraft crossing La Reunion TMA. Refer to NOTAM A1452/15.

**FAA** The FAA is rolling out Controller Pilot Data Link Communications-Departure Clearance (CPDLC-DCL). Currently, only George Bush Intercontinental Airport in Houston, TX (IAH), William P. Hobby Airport in Houston, TX (HOU) and Salt Lake City International Airport in Utah (SLC) are operational, however, the FAA

plans to bring 56 airports online by the end of 2016. KTEB/Teterboro is scheduled to be operational by the end of MAR2016.

**View the full International Operations Bulletin for 16NOV2015**

---

# Monday Briefing: North Atlantic OTS Changes, Indonesia Volcano Eruption

Declan Selleck  
5 July, 2016

<b>INTERNATIONAL BULLETIN</b>	<b>ISSUED BY FLIGHT SERVICE BUREAU</b>
	SITA HNLFSXH AKLFSXH AFTN KMCOXAAL EMAIL INTL.DESK@FSBUREAU.ORG



**North Atlantic OTS Changes this week** 09NOV This Wednesday (12NOV) sees the implementation of the new NAT Track OTS, marking the first change to the lateral structure since the tracks were introduced in 1965. New requirements include RNP4, and 24 new Oceanic Entry Points come into effect. See below for further.

**Indonesia Volcano Eruption** 09NOV Operations into WADD/ Denpasar, Bali continue to be disrupted due to ongoing eruption of Mt. Rinjani on Lombok Island. Also affected are nearby WARB/Blimbingsari and WADL/Lombok.

---

**EINN/Shannon FIR** CPDLC service is withdrawn on the evening prior to implementation of the new NAT Track system, voice service only from 1715Z onwards on 11NOV.

**LGGG/Athens FIR** Strike of Greek Radio Operators (thereby including AFTN messaging, and AFIS) announced this morning for 12NOV. Overflights will not be affected. Full details [here](#).

**HESH/Sharm el-Sheikh** remains open but subject to multiple advice notices from international

Authorities. Many airlines have cancelled operations into the airport after increasing suspicions that a bomb was loaded here onto the A320 which crashed into the Sinai Desert.

**HLLL/Tripoli FIR** Libya has issued updated advice regarding airport availability – HLLQ, HLTQ and HLZW are only available for international arrivals, daylight hours only. PPR and Permit is required prior operations.

**SCFZ/Antofagasta ACC, Chile.** Crews on Airways UL780 and UL302 are requested to inform ATC of any speed changes greater than .02 Mach; if unable on VHF, use HF 10024. The procedure is to ensure separation between succeeding aircraft operating on CI speeds.

**SBXX/Brazil** The Brazilian Grand Prix takes place 13-15NOV making Sao Paulo operations at SBSP/Congonhas, SBGR/Guarulhos, and SBKP/Campinas busier than usual.

**RPLL/Manila, Philippines** APEC 2015 Summit being held 17-20NOV. Check restrictions, many commercial flights have been suspended during this period. Parking at a premium. Consider quieter alternates such as RPLC/Clark.

**YXXX/Australia** Australian Border Force strike commencing midnight 09NOV across Australian airports. As a result, departure and arrival processing at Australian airports may take longer than usual.

**WADD/Denpasar, Indonesia** Operations here continue to be disrupted due to ongoing eruption of Mt. Rinjani. Also affected are nearby WARB/Blimbingsari and WADL/Lombok. For updates monitor [http://www.bom.gov.au/products/Volc\\_ash\\_recent.shtml](http://www.bom.gov.au/products/Volc_ash_recent.shtml)

**LIXX/Italy** Possible ATC strike on 14NOV 1200-1600Z announced.

**KXXX/US** Airport Runway closures: BWI-RWY 10/28 CLOSED SEA-RWY 16C/34C CLOSED LAS-RWY 7L/25R CLOSED

**KLAS/Las Vegas** NBAA 2015 will take place 17-19NOV limiting airport capacity.

**HECC/Cairo FIR, Egypt** Point PASOS (LCCC FIR) is again available in both directions for flight planning. Please be aware flights departing OLBA via LCCC must file via VELOX-PASOS. Also see HECC NOTAM 1A277/15 and 1A278/15 for flight planning guidance.

**VHHH/Hong Kong** Arrival and Departure delays up to 30 minutes can be expected due to a flight check and maintenance on RWY 07L/25R on 09NOV 0530-0100 and 10NOV 2300-0100.

**Caribbean** Tropical Weather Advisory Shower and thunderstorm activity is showing signs of organization in association with a low pressure system located just north of the Turks and Caicos and the southeastern Bahamas. A tropical depression or a tropical storm is likely to form on Monday while the low moves west-northwestward to northwestward near or over the central and northwestern Bahamas. For further details see National Hurricane Center

**KLAX/Los Angeles** Due to military operations of the coast of LAX there is a risk of arrival delays and reroutes during the overnight periods until Nov 12th.

**MWCR/Grand Cayman** may be forced to shorten the runway at Owen Roberts International Airport (MCWR/GCM). The runway, which was extended to accommodate long-haul flights, may have to be shortened in order to accommodate a 400 ft/124 m safety area. An extension of the runway cannot be further extended, and the airport authority is examining all options.

**CYYQ/Churchill** has amended opening hours 1200-2200Z M-F.

**PKWA/Bucholz** has revised ATC hours from 01NOV, 0800-1230 and 1330-1600LT.

**NWWW/Tontouta** has a main runway closure 09-12NOV at various times, some daytime. Check NOTAM 1543/15.

**EGPF/Glasgow** is closed overnight 22NOV-11DEC for runway and taxiway repairs.

**DRRR/Niamey** Ouagadougou ACC is now operational H24 again; the previously implemented contingency plan for traffic operating outside ATC service hours is withdrawn.

**View the full International Operations Bulletin for 09NOV2015.**

---

## Monday Briefing: Sinai Airspace avoided, Low Vis creates day of chaos

Declan Selleck

5 July, 2016

**INTERNATIONAL  
BULLETIN**

**ISSUED BY FLIGHT SERVICE BUREAU**

SITA HNLFSXH AKLFSXH AFTN KMCOXAAL  
EMAIL INTL.DESK@FSBUREAU.ORG



**02NOV2015** HECC/Cairo has requested that traffic through PASOS point on the boundary with LCCC/Nicosia FIR be rerouted, effectively closing airway UL550 and the Sinai peninsula. Shown on radar image above, most traffic is avoiding the area that an A321 crashed in on Saturday. No definite link is being made but Authorities and Operators are naturally cautious.

**02NOV2015** Conditions perfect for fog across the UK and western Europe are causing widespread delays this morning. Unusually, almost all airports from EGCC/Manchester to EDDF/Frankfurt are affected by the same conditions, with many airports down to 100 metres vis. Most not accepting diversions. See below for further.

---

**EXXX/Europe** High delays in most Airports in a square containing EGCC/Manchester, EBBR/Brussels, EDDF/Frankfurt, and EDDH/Hamburg. Total of approx 120,000 slot delay minutes in Eurocontrol system.

Other high delay airports include EHAM, EGLL, EGKK, EGSS. Check NOTAMs as most are not accepting diversions either. Fog forecast to be similar again overnight.

**VTBB/Bangkok FIR** A minimum departure interval of 4-8 minutes between same direction departures is in force from 30OCT for aircraft departing VTCC VTCT VTUU VTUD VTSP VTSG VTSF VTSB VTSM AND VTSS. Delays during peak hours are expected.

**UUBC/Grabtsevo** New Russian Airport now fully operational with 2200m runway (12/30) and able to accommodate international traffic up to A320/737 size.

**UHSS/Yuzhno Sakhalinsk**, a common Polar alternate, is closed due runway repairs 1200-2100Z until 01DEC and therefore not available as ALTN for Flight Planning.

**NTTA/Tahiti** will be without radar on 03NOV after 1800Z. As with all radar outages there is potential for delays and restrictions.

**KXXX/USA** Runway current closures: BWI-RWY 10/28, SEA-RWY 16C/34C, LAS-RWY 7L-25R.

**KSFO/San Francisco** will close Taxiway Q and B on 07/08NOV to resolve a pavement issue. This will create a one-in-one-out restriction for aircraft taxiing to and from all gates west of Taxiway Q1. Specifically, this will affect United Airlines, SFOs largest customer, as a majority of its gates are west of Q1. Additionally, the proximity of the closure area to Taxiway B1 will render B1 unusable due to insufficient wing tip and jet blast clearance with the construction area. The loss of Taxiway B1 means that access to the end-around Taxiway Z will be unavailable.

**HKXX/Kenya** No longer possible to obtain a visa on arrival for passengers. Must now be arranged prior to arrival online at <https://account.ecitizen.go.ke/register>.

**SOOO/Cayenne FIR, South Atlantic** – Aircraft not FANS 1A equipped, east of 50W in the Cayenne FIR, can now expect a maximum level of FL310 westbound.

**EXXX/Europe** The European Business Aviation Association (EBAA) is providing a new tool to calculate Passenger Taxes payable in EU countries. The “PaxTax” tool calculates the total passenger tax for the flight, and breaks down the cost for both departure and arrival for the respective national taxing authorities.

**YBBN/Brisbane** New \$45m international terminal opened 28OCT after 18 months of construction. The facility can handle 7.5m pax annually.

**VNxx/NEPAL** Fuel supply update: China will supply fuel to Nepal for the first time ever, in response to a dire fuel shortage caused by disrupted supply lines with India. China will supply 1.3 million liters of gasoline, which will be transported to Kathmandu from the border via 100 tanker trucks. Please continue to check local NOTAMs for fuel availability.

**DNxx/Nigeria FIR** Widespread reports of a strike forcing the closure of Nigeria’s airspace have been deemed unreliable, per the Nigerian CAA. There is unrest and occasional industrial action, but no risk of airspace being closed.

**Timezone Changes** As DST ends in the Northern Hemisphere, series of clock changes completed on 01NOV as US ended Daylight Savings. Most of Europe completed theirs on 25OCT. Most northern countries are now on Standard Time.

**View the complete International Operations Bulletin for 02NOV2015.**