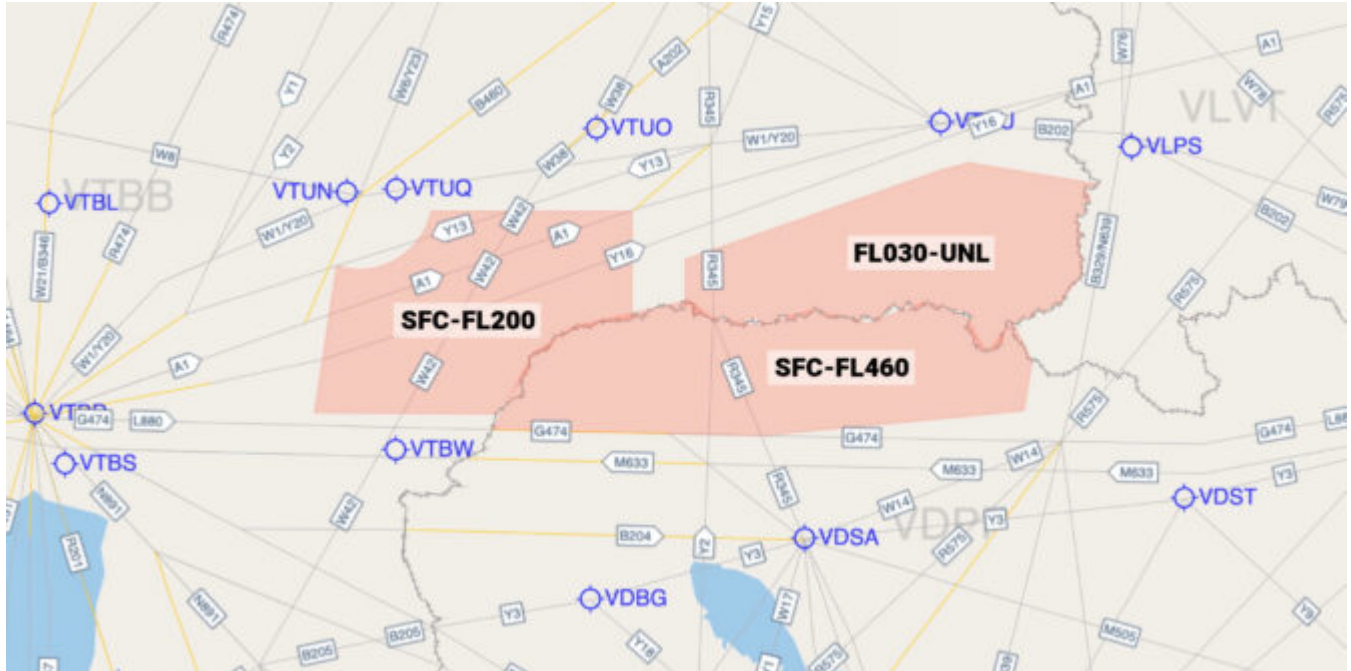


Emerging Airspace Risk: Cambodia & Thailand

Chris Shieff
28 July, 2025



Update: July 28

Good news: **Cambodia and Thailand have agreed to an immediate and unconditional ceasefire** starting midnight local time on Monday July 28 (1700Z), following five days of intense fighting along their shared border. Both sides have committed to reopening communication lines and setting up a monitoring mechanism to maintain the truce.

While this is a major step toward de-escalation, the situation remains fragile – **caution is still advised near the border region.**

There are **no changes so far to the Phnom Penh FIR danger area (SFC-UNL)**. VDPF Notam **A0092/25** remains active.

Original Article: July 25

Key Points

- A sudden military escalation began on July 24 along the central portion of the Cambodia-Thailand border, around 100-150 NM north of Siem Reap.
- Both sides accuse each other of firing first. Thailand has carried out airstrikes using F-16s.
- A danger area now extends along much of the border, SFC to UNL. Overflights may face elevated risk from unannounced military activity, including GPS interference.

Background

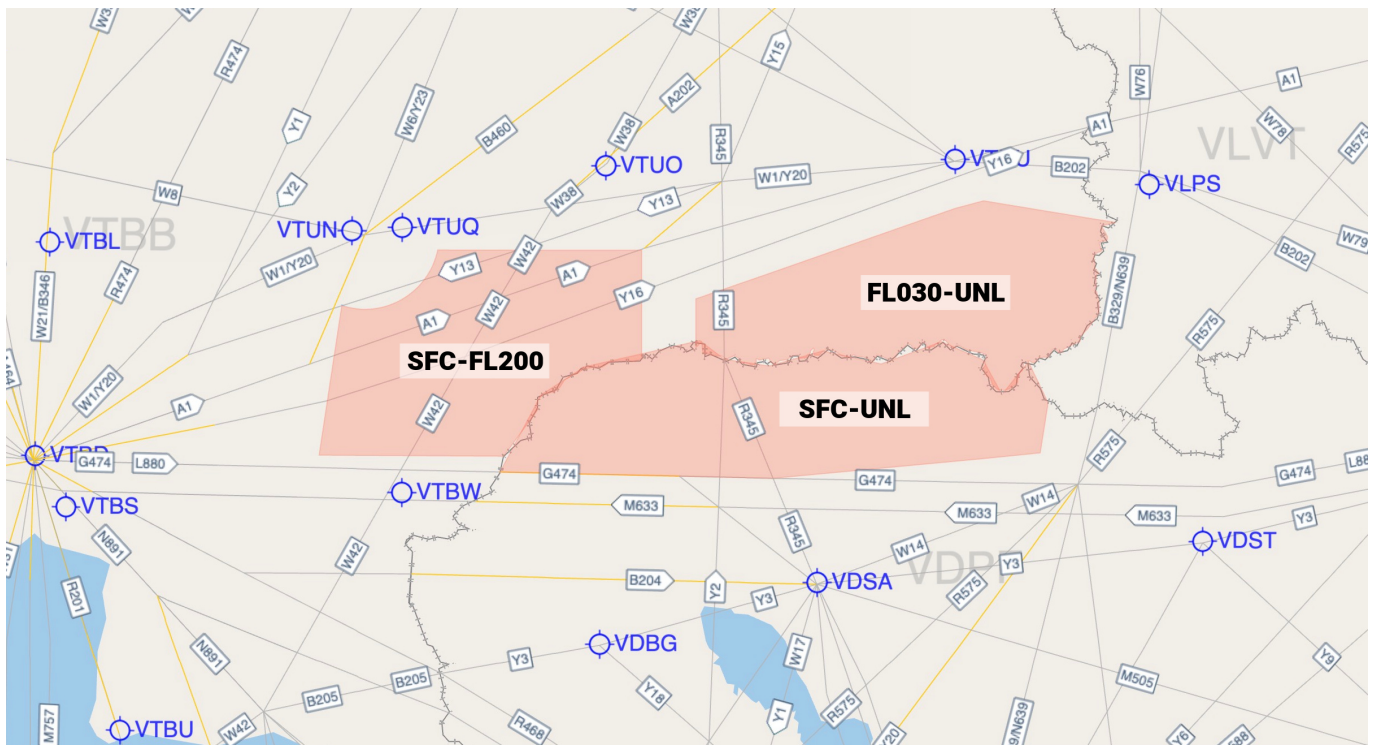
Cambodia and Thailand's long-standing border dispute has flared since May, when a Cambodian soldier was killed in a skirmish. In the weeks since, alleged landmine incidents have endangered Thai troops.

Political turmoil in Thailand has added to the crisis – its Prime Minister was suspended after a leaked call with Cambodian leaders linked to the dispute.

By July 24, the conflict had escalated into one of Southeast Asia's most serious military confrontations in over a decade, involving **airstrikes, heavy artillery, and mass civilian displacement**.

Danger Areas

Thailand and Cambodia have both issued Notams (under the VDPF/Phnom Penh FIR and VTBB/Bangkok FIR codes), activating **danger areas across a large portion of the shared border at all levels**.



What's notably absent from the Notams is any mention of the reason behind the danger area activations: **an escalating conflict on the ground**.

Cross-border fighting has involved heavy artillery and military airstrikes. Unannounced military activity poses **potential risks to civil aviation at all levels** – including from air defense systems and GPS interference.

We advise caution in the open airspace above.

High altitude airways affected include:

North/Southbound

R345 – the airway connecting VDSA/Siem Reap with northern Thailand.

Y2 – connects southern Cambodia with northern Thailand.

These routes are currently off-limits, as they pass through the main danger areas.

A1/Y16/Y13 – airways connecting the Bangkok airports with eastern Thailand and Vietnam. The danger area here only extends up to FL200, with airline traffic still transiting these routes.

At time of writing, there are no new state-issued airspace warnings concerning either Thai or Cambodian airspace.

South East Asia: Open for Business

Chris Shieff
28 July, 2025



The world is steadily emerging from the pandemic, and the Northern Hemisphere has arguably been leading the charge.

South-East Asia on the other hand has been lagging behind. The region's countries have resisted joining the world's 'new normal', instead relying on strict 'zero-covid' strategies that kept foreigners out, citizens in hotel quarantine, and crews cooped up in hotels. **Until now.**

In recent weeks and months, we have seen **several major announcements** from these countries that at last, they are willing to re-join the rest of the world – and that's good news for the industry.

Here's a rundown of the biggest changes happening right now.

Singapore

The News

From April 1, fully vaccinated foreigners (from anywhere) are once again be able enter the city-state without quarantine.

The existing 'Vaccinated Travel Lane (VTL)' scheme has been scrapped. For operators this means that passenger flights flying into the Lion City will no longer need approval to operate under strict VTL protocols.

Passenger Rules

For fully vaccinated passengers, [click here](#).

For non-vaccinated passengers, [click here](#). **Special approval is required, and in most cases non-vaccinated foreigners will not be allowed. Seven days of self-quarantine also applies.*

Crew Rules

There are new rules for crew – one set for vaccinated crew (no restrictions on movement), and another set for unvaccinated crew (you have to stay in one of three approved hotels, and you're confined to your room!).

But watch out for one important stipulation: if any crew are unvaccinated, ALL of you have to follow the unvaccinated set of rules.

Check new CAAS Circular 18/2022 Rev 2 for full details.

Malaysia

The News

It's also good. From April 1, the country completely reopened to fully vaccinated passengers with no quarantine. Foreigners also no longer need to seek approval before travelling.

Passenger Rules

They're complicated. And depend on vaccination status (they also take into account whether you have received a booster dose).

You can find that information [here](#), but here's a picture, because pictures are always better:

TEST AND QUARANTINE FOR TRAVELLERS



Effective: 1 April 2022

Vaccination Status	Pre-departure Test	On-arrival Test	Test And Quarantine After Arrival
Fully vaccinated + booster dose (aged 18 and above)	PCR test – 2 days before journey	RTK-Ag professional test at facility/hotel in 24 hours	<ul style="list-style-type: none"> • No test • No quarantine
Fully vaccinated			
Fully vaccinated and recently infected with COVID-19 (within 60 days before departure)	RTK-ag professional- 2 days before journey		
Not vaccinated due to medical reasons (based on case to case basis)	PCR test – 2 days before journey	RTK-Ag professional Test at facility/hotel in 24 hours	<ul style="list-style-type: none"> • No test • No quarantine (results based on case to case basis)
Partially vaccinated/ not vaccinated	PCR test – 2 days before journey	RTK-Ag professional test at facility/ hotel in 24 hours	PCR test on day 4 / RTK-Ag on day 5 quarantine for 5 days
Children and adolescents 17 and below (vaccinated or unvaccinated)	PCR test – 2 days before journey	RTK-Ag professional test at facility/ Hotel in 24 hours	<ul style="list-style-type: none"> • No test • No quarantine



Bersama
Hentikan
Wabak
COVID-19

moh.gov.my



#ReopeningSafely

Crew Rules

Crew can only enter Malaysia through WMSA/Subang, WMKK/Kuala Lumpur or WMKL/Langkawi airports.

In all cases they require a PCR test that is less than 72 hours old at time of arrival. Subang seems to be the best option, with no quarantine or maximum stay. In Kuala Lumpur crew can only stay for 24 hours and must isolate in the hotel, while in Langkawi crew can stay for 72 hours and don't have to isolate if they follow the same rules as tourists.

Indonesia

What's the news?

They've dropped quarantine for both passengers and crew throughout the entire country. This follows a successful trial on the holiday island of Bali.

Passenger Rules

They'll need a PCR test taken within 48 hours before departure for Indonesia. Keep in mind this can be a tight turn around for busy labs – the global standard seems to be 72 hours.

Crew Rules

You'll need a certificate or card proving you are fully vaccinated, along with a PCR test. The rules are a little easier for crew – you have 72 hours to get that done before you leave for Indonesia. There will also be a travel declaration to fill out, but you'll be free to leave the hotel and enjoy your layover.

Vietnam

What's the news?

Borders are now open to all foreigners, with no quarantine, as long as they hold a valid visa. Watch out for this gotcha though: the only visas available on arrival are currently for business travellers (not tourists). Everyone else will need to apply beforehand online. There's a long list of countries that this applies to (including the US, Canada and UK) which you can access [here](#). There are also visa exemptions available for select countries, see the image below.

Passenger Rules

They'll need to get tested first, and there's two options. A PCR test that is less than 72 hours old, or a rapid antigen test that is less than 24 hours old – both at time of departure for Vietnam. There's an opt clause too, if they can't provide proof of a test they can still travel but will need to get tested within 24 hours of touching down.

Crew Rules

Local agents advise that all the same requirements apply to crew as for passengers (including a valid visa or exemption) – that is if you want to enter the country.

Japan

What's the news?

Ok, so not really South-East-Asia but we thought we'd include it anyway – given that Japan lifted its entry ban on foreigners from over a hundred countries on April 8 (including the US and UK). One big gotcha though – tourists will still have to wait. Pax will need to be entering for business, study or some other essential reason.

Passenger Rules

Depending on their vaccination status, where they are travelling from, and whether they are identified as a close contact of a positive case, they may be subject to up to 7 full days of quarantine and/or self-isolation on arrival.

For Japan's horribly complex entry rules in their official format, [click here](#).

Crew Rules

The crew rules remain a bit of a mystery. We've had some reports from crew saying they were unable to apply for any of the visas available to passengers (business, study, etc).

We haven't seen any published rule changes here from how it worked before – crew can enter on a 'shore pass' arranged through their handler, but must self-isolate in the hotel for 7 days or until departure.

Opsgroup members have reported the following: *“The guidance we received from our company is that crew members must stay in their rooms but can leave the hotel for exercise and to obtain food to bring back to eat in the room. No dining out, no shopping for anything other than food to eat in your room. We enter on a shore pass. For quarantine, we fill out two forms that ask about where we have been in the world and if we are feeling healthy, where we are staying, and if we have transportation (another quarantine requirement is that we don’t use public transportation). We also sign a pledge that we are going to follow the rules. They then give us a quarantine card to go with our shore pass. When we arrive for our return trip, we initial a paper saying that we followed the rules.”*

If you’re considering a trip to Japan, try contacting a local handler (iajops@interavia.co.jp and fltops@aeroworks.jp are decent options) and check if there’s any update to these rules – especially those for crew (and please let us know what you find out!)

A note on Thailand.

Borders have been open to foreigners for a while now via three main entry schemes:

- Test and Go (a quarantine free option)
- Sandbox (restricted movement)
- Alternative Quarantine Scheme (quarantine reduced to five days from April 1).

The main news is that in all cases the requirement for passengers to get tested before arriving has been scrapped from April 1. Crew can make use of the same schemes and enter under the same conditions as pax.

For more info on passenger entry rules, check out the official page here, as well as the handy checklist document put together by local handling agent Asia Flight Services (eff Apr 6).

Still closed for business.

Not all of South East Asia is open to foreigners yet, watch out for these ones:

Myanmar – International passenger flights are still not allowed to land. Visas are not currently being issued for foreigners.

Brunei – Entry is still severely restricted. Any foreigner needs approval first and non-essential travel is off limits.

Laos – Special permission is still required for foreigners, and tourism is a no-go.

Unsure? Ask the team.

Entry rules change quickly and can be frustratingly confusing to get your head around. If there is a specific country you are looking for info on, try the #questions channel in Slack, or reach out to us at team@ops.group and we’ll do our best to help you find the answers you’re looking for.

International Bulletin: Hong Kong pain in the ass, Haiti relief operations

Cynthia Claros
28 July, 2025

INTERNATIONAL BULLETIN	ISSUED BY FLIGHT SERVICE BUREAU
	SITA HNLFSXH AKLFSXH AFTN KMCXAAL EMAIL INTL.DESK@FSBUREAU.ORG



Hong Kong is a pain in the ass - it's official 20OCT Authorities in Hong Kong confirmed yesterday that the airport is a giant pain, especially for non-scheduled operators. Lining up slots, parking, permits and handling is extremely difficult. End result: a mountain of frustration. Read the article.

Haiti relief operations - and Airbus Flight 101 20OCT After Hurricane Matthew last week, MTPP/Port-au-Prince (Toussaint Louverture) became a central focus in relief efforts for Haiti. **OpsGroup member Airbus** operated an amazing relief flight from Lyon. Read the article.

VTZZ/Thailand is in a period of mourning following the death of His Majesty, King Bhumibol on 13 October. This is a time of deep sorrow for Thai people – refrain from any behaviour that may be interpreted as festive, disrespectful or disorderly. Abide by local laws and respect Thai customs. There may be some disruption of commercial and public services during the mourning period, especially during the first 30 days (until 13 November). Tourist attractions are open with the exception of Wat Pra Kaew (Temple of the Emerald Buddha) and the Grand Palace in Bangkok. Expect traffic disruptions and heightened security around these areas as people pay their respects to the late King.

EBBR/Brussels All non-scheduled flights destined to EBBR are allowed only after special permission by Airport Authority before start of flight. Contact +32 2 7536900 or inspect@brusselsairport.be.

DTZZ/Tunisia extended the state of emergency on 18OCT, set to expire, by three months. The state of emergency went into effect following a series of terrorist attacks in 2015 and has been extended multiple times.

ORBB/Baghdad FIR Traffic entering from Baghdad FIR (ORBB) to Ankara FIR (LTAA) shall file their FPL as follows: NINVA-OTKEP-SRT at FL320 and above. NOTAM A4572/16 refers.

Solomon Islands There has been a confirmed outbreak of dengue fever in the capital city, Honiara; you should follow the advice of the local authorities and take steps to avoid being bitten by mosquitoes; you should take out comprehensive travel and medical insurance before travelling to the Solomon Islands

TXKF/Bermuda Due to maintenance, the Bermuda Radar system will be out of service on Friday. Recommended reroute to avoid airspace. New York Center overflight procedures will be in effect. Routes have been developed to provide limited non-radar service within the airspace. All departures from Bermuda will be held down at FL310.

OJAI/Amman, Jordan Runway 26L/08R will be closed for urgent pavement maintenance on these days in November: 01,08,15,22,29: from 0930-1330Z. The airport will not be available for either normal operations or emergency divers during the closure period.

OEZZ/Saudi Arabia From 8 to 10 October there were several missile attacks reported near the Saudi / Yemeni border and the southern Red Sea.

ZZZZ/Worldwide Regulatory and voluntary bans on Samsung Galaxy Note7 smartphones is spreading as airlines and airport authorities around the world are announcing bans or restricted usage on the device, which has been withdrawn by Samsung after some devices caught fire. Ban notices are being issued primarily through airline online check-in pages, as well as via public announcements in airport terminals and onboard aircraft. The US Department of Transportation (DOT) was first to issue a total ban on taking the device on board, as a passenger or as air cargo, when it gave an emergency order Oct. 15 with FAA. The devices are being banned because of fire concerns, and the fallout following an incident involving a smoking smartphone on board a Southwest Airlines aircraft in Louisville, Kentucky on Oct. 5.

YZZZ/Australia will not be implementing the changes in the ICAO PANS-ATM (Doc 4444), as they say they haven't had enough time to work on the safety case - ie. figuring out if these changes are dangerous in any way. In short, they won't be saying "Climb via SID" or "Climb via STAR", which are the new phraseologies.

TTZP/Piarco wins the award for most confusing AIC of the week, namely AIC03/16 issued on 13OCT. Titled "RVSM Implementation", it appears that Trinidad is finally implementing RVSM in their airspace. But wait, they did that in 2005. So what's new in this AIC? It's a mystery. Take a look and see if you can spot it.

KLAX/Los Angeles 3 out of the 4 runways at KLAX have now been renovated. Runway 6R/24L reopened on 16OCT after renovations. Improvements to the fourth and final runway, 07L/25R, will begin OCT22 and continue until June 2017. This last runway will be partially closed until January, and then closed completely to allow for more extensive work to be done

FSIA/Seychelles Runway will be closed on Thursday 20 and 27 Oct between 1815-0245z and Friday 21 and 28 Oct between 1900-0215z. Can be opened in cases of emergency.

UHPP/Petropavlovsk Eruption in progress at Klyuchevskoy volcano (N5603E16038) near UHPP. Ash cloud reported at 0720z on 17 Oct from ground level up to FL300.

VVZZ/Vietnam Typhoon Sarika is forecast to bring hazardous sea and weather conditions to parts of northern Vietnam from around 19 October 2016; heavy rainfall could lead to flooding and landslides

KLAS/Las Vegas Because of the next presidential debate that will be held in Las Vegas on October 19, 2016, intermittent road closures will affect access to McCarran International Airport (LAS) between 4 pm and 10 pm on that date. The recommended route to the airport from the east side of the valley is westbound Flamingo Road to southbound Paradise Road. The recommended route to the airport from the west side of the valley is eastbound Tropicana Avenue to southbound Paradise Road.

OIIX/Tehran FIR The minimum safe level on R462 between DENDA and METBI has been raised to FL140.

KSFO/San Francisco has a new ATC Tower operational since Sunday last, located between Terminals 1 and 2. Per the local report, it “offers controllers a 650-square-foot work area with unobstructed 235-degree views of the airport’s runways and taxiways”. Hopefully there’s not much going on in the other 125 degrees.

OSZZ/Syria Russia’s only aircraft carrier, Admiral Kuznetsov, is nearing the end of a work-up period outside the port of Murmansk before heading for the eastern Mediterranean, reportedly to begin air operations against targets in Syria.

EGPK/Prestwick will be closed from midnight to 0400Z on 21OCT, due to a planned ATC power outage. ATC reachable during outage at +447917 424603.

RPZZ/Philippines Typhoon Sarika recently passed through the island of Luzon as a category 4 storm. Transportation routes, power and telecommunications systems could be affected in some areas. Other services that may be affected in these areas include emergency and medical care, as well as water and food supplies. If travelling to affected areas, exercise caution, monitor local news and weather reports, and follow the advice of local authorities.

View full International Bulletin 20OCT2016

Midweek Briefing: Australia Airport Workers Strike, ICAO Toughens Aircraft Tracking

Cynthia Claros
28 July, 2025

**INTERNATIONAL
BULLETIN**

ISSUED BY FLIGHT SERVICE BUREAU

SITA HNLFSXH AKLFSXH AFTN KMCXAAL

EMAIL INTL.DESK@FSBUREAU.ORG



Australia Airport Workers Strike 09MAR The Community and Public Sector Union (CSPU) announced the possibility of a strike during the week of 21 March, as well as three weeks of rolling airport strikes by Border Force and Immigration Department staff at international airports across the country. Airport staff members are expected to begin a work stoppage on 24 March, to coincide with the Easter holiday

weekend, and will walk off the job at airports, freight terminals and other related sites. The work stoppages will be held to protest wage freezes and work conditions. Further details are likely to emerge closer to the strike.

ICAO Toughens Aircraft Tracking while in distress 02MAR The ICAO has announced new requirements for the real-time tracking of civilian aircraft in distress, following the disappearance of Malaysia Airlines flight MH370 two years ago. The ICAO's governing council approved proposals for planes to carry tracking devices that can transmit their location at least once a minute in cases of distress. Aircraft operators will have to ensure their flight recorder data is recoverable, while the duration of cockpit voice recordings is being extended to 25 hours, ICAO said in a news release. These changes will take effect between now and 2021.

United States Visa Waiver Program Passport Requirements Take Effect April 1. Visa Waiver Program (VWP) travelers must present an e-Passport containing a biometric chip in order to enter the United States visa-free after March 31, 2016. VWP travelers who do not hold an e-Passport should apply for a new passport as soon as possible to ensure that they can continue to use the program without interruption. The e-Passport requirement applies only to VWP travelers; it does not affect holders of U.S. visas.

Canada Electronic Travel Authorization Deadline Relaxed It has been announced that visa-exempt nationals who plan to enter or exit and re-enter Canada by air will be able to board their flight without an Electronic Travel Authorization (eTA) from March 15, 2016 until fall 2016.

India has extended its e-Tourist Visa program to applicants from 37 additional countries. Also, the visa-on-arrival program for certain Japanese nationals who are unable to apply for a regular or electronic visa has been relaxed to allow multiple visits per calendar year. Lastly, the deadline for Person of Indian Origin card holders to apply for the Overseas Citizen of India card in lieu of Person of Indian Origin card has been extended until June 30, 2016.

Ecuador The Ecuador's Geophysical Institute reported that the Tungurahua volcano has experienced a series of eruptions. Pyroclastic flows and fallen ash have collected near the crater. During past eruptions, the volcano's clouds of ash have disrupted flights to major airports in the region.

KZWW/New York Oceanic has issued NOTAM A0105/16 advising restrictions to routings in the WATRS PLUS area due to the (QVR) Oceana Radar being U/S on March 9th and March 10th between the hours of 14-22Z. The restrictions are issued as follows:

Northbound: L453 will be closed.

Southbound: M201 will be clsd btn int atugi and hanri.

Only aircraft equipped with operational ADS-260B out may use the following routes:

Southbound: L453 between LEXAD and ONGOT

North-eastbound: M201 between HANRI and ATUGI

All ADS-260B out aircraft must file an icao flight plan.

UIBB/Bratsk issued a NOTAM restricting the arrivals to only scheduled services due a fuel shortage until March 31st.

PKMJ/Majuro (Marshall Islands) Monthly tanker replenishment is planned for Mar 21-25. During this

time, fuel will not be available.

VTSP/Phuket, Thailand has issued a NOTAM advising that the parking of private aircraft is prohibited overnight until April 25th.

Nigeria has experienced a country wide fuel shortage. Please check with your handler ahead of time to ensure fuel is available. Tankering is highly recommended until further notice.

LCCC FIR/Nicosia FIR Late notification of a military exercise in LCCC ACC starting on 09/03/2016 0300 UTC until 11/03/2016 1000 UTC. Exercise areas and route closures announced by following NOTAMs:

A0191/16 through A0196/16, A0208/16 and A0209/16 for area specifications. A0215/16 through A0220/16 for the route closures.

Please see the following graphic outlining the area:



View the full International Bulletin 09MAR2016

Monday Briefing: Northern California airspace changes, Iraq closes airspace below

FL300

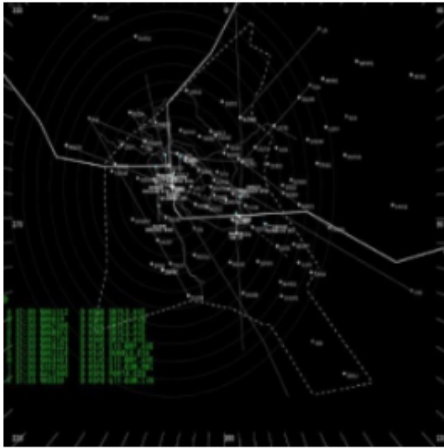
Cynthia Claros

28 July, 2025

**INTERNATIONAL
BULLETIN**

ISSUED BY FLIGHT SERVICE BUREAU

SITA HNLFSXH AKLFSXH AFTN KMCOXAAL
EMAIL INTL.DESK@FSBUREAU.ORG



Northern California ‘Metroplex’ airspace changes 07DEC On 10DEC, several revised and new SIDs and STARs associated with the Northern California Metroplex project will be published. These procedures will be the last major changes associated with the project. You can find the full document covering the changes [here](#).

Iraq closes airspace in Kurdish North below FL300 06DEC Iraq issued a new Notam on 06DEC warning of further Cruise Missile operations below FL310. ORBB A0423/15 states that “Flights operating at FL310 or above, and flights operating at ORBI, ORNI and ORMM are not affected”. You can read the full Notam [here](#).

OIIX/Tehran FIR German Authorities published a new Notam last week warning of a risk to flight for aircraft operating in the vicinity of OITT/Tabriz, OITL/Ardabil, and OIGG/Rasht. DFS, the German ATC agency, recommends overflying this general region at FL260 or higher. A6875/15.

Russia/Turkey Effective **01DEC**, Direct non-scheduled flights between Russia and Turkey are banned by decree of the President of the Russian Federation dated 28NOV. Prohibited for all airlines, regardless of the country of aircraft’s registration .

VOMM/Chennai Re-opened for 24-hour domestic and international flight operations today, five days after it was shut due to flooding.

EGGX/Shanwick As of 07DEC, although system testing and acceptance is reportedly finished, no RLAT/Reduced Lateral Separation tracks have yet been published by Shanwick or Gander for the daily OTS. It appears uncertain what the first day of operation will be.

MUHA/Havana, Cuba Hotel Capacity in Havana is under severe strain at present. With increased traffic to

Cuba, finding a hotel room is now a regular challenge. Some airline crews have had to be accommodated in Varadero instead, as there were no hotel rooms left in the city. Book well in advance, where possible.

OMxx/United Arab Emirates It has been advised to us, that the requirement for TCAS 7.1 also applies to the Emirates FIR. All aircraft arrivals/departures or those transiting UAE airspace from 01DEC must be 7.1 compliant, or a re-route around UAE airspace will be required. Another option is to obtain a special dispensation to operate, this is available from GCAA in AUH, but is reportedly difficult to obtain. For more details please see the UAE AIP 'Gen 1.5.6.6 Carriage of ACAS-II'.

Llxx/Italy There is a possible suspension of IFR non scheduled commercial traffic to/from LIRF and LIRA on Dec 8th. Please see NOTAM LIXX 1W2845/15 for the official restriction.

Llxx/Italy Ongoing volcanic emission from Mt. Etna may disrupt routings through Italian Airspace. Please check the Toulouse VAAC for the most up to date info.

ESxx/Sweden have been forced to suspend, with immediate effect, flights from northern Iraq to Sweden following a directive from the Swedish Transport Agency (Transportstyrelsen). In a statement issued last week, Transportstyrelsen said the increased military activity across northern Iraq posed a threat to civilian flights thus warranting a ban.

VTxx/Thailand The FAA has downgraded Thailand to a Category 2 after an audit of the country's Department of Civil Aviation (DCA) in October showed continued non-compliance with International Civil Aviation Organization (ICAO) safety standards. The FAA's move comes five months after the ICAO formally instituted a Serious Safety Concern (SSC) against Thailand for failure to adequately address shortcomings identified during a Universal Safety Oversight Audit Programme (USOAP) inspection in January.

MUxx/CUBA Will be reinstating travel permits for doctors. On 01DEC, Cuba announced that it was reinstating the travel restrictions it had previously imposed on doctors, which requires doctors to obtain permission before leaving the country. The restriction had been lifted in 2013, but is now being re-imposed, as the government claims that its universal and free health care services are being "seriously affected" by the number of doctors leaving the country.

Zxxx/China will mandate that its air traffic controllers use only English when communicating with pilots of any airline starting in 2017, according to the Civil Aviation Administration of China (CAAC). The move will improve situational awareness for foreign pilots. Currently, ATC at all airports across China use English to communicate with pilots of foreign airlines and Mandarin with those flying for Chinese carriers. The CAAC will announce the exact date for implementation later, ensuring the readiness of all stakeholders involved in the process.

ZUUU/Chengdu has completed the on going construction work. The parking bay has been released and is available on a first come, first serve basis. This applies to overnighting aircraft as well.

View the full International Operations Bulletin for 07DEC2015