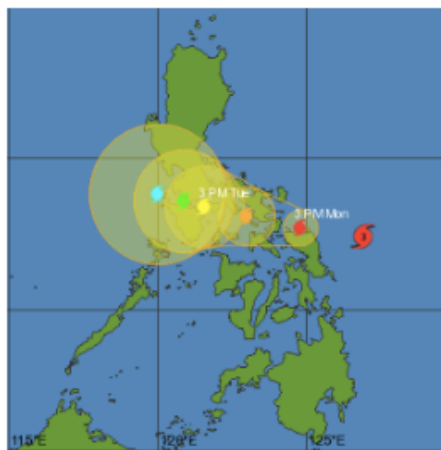
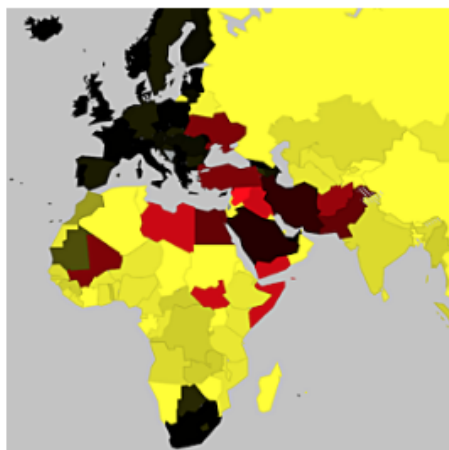


Monday Briefing: New Overflight Map, Typhoon Melor affecting the Philippines

Cynthia Claros
14 December, 2015

INTERNATIONAL BULLETIN	ISSUED BY FLIGHT SERVICE BUREAU
	SITA HNLFSXH AKLFSXH AFTN KMCOXAAL EMAIL INTL.DESK@FSBUREAU.ORG



New Overflight Map 14DEC The Airline Cooperative and Flight Service Bureau have finalised the initial version of an online Overflight Permit and Security Map, showing current airspace and security warnings worldwide, together with county by country information on permit requirements. The map is available at all AO's at fsbureau.org/map. Read more below.

Typhoon Melor affecting the Philippines 14DEC the center of Typhoon Melor is forecast to move into the central Philippines (near southeastern Luzon) Monday evening local time as the equivalent of a Category 4 hurricane. The current forecast path indicates the Typhoon moving inland towards Legazpi City, Sorsogon City and Gubat are some of the locations. For more details visit the **Joint Typhoon Warning Center (JTWC)**.

EGGX/Shanwick/CZQX/Gander The technical issues affecting the implementation of the RLAT/Reduced Lateral Separation tracks have reportedly been finally resolved and the first publication of the "Half Tracks" is now scheduled for **today**, 14DEC2015.

LFRR/Brest FIR Most sectors regulated day and night due to new software (ERATO) implementation. High delays. The worst delays are in the following sectors: LFRMZSI, LFRJ, LFRN, LFRVKWS. German departures to USA are advised to consider routing North of Brest airspace via NIK (or North of).

OAKN/Kandahar A Taliban attack took place at the airport on 08DEC, with close to 50 fatalities. The attack was a major security breach, as heavily armed militants were able to enter a fortified area supposed to have been made secure by the Afghan National Security Forces (ANSF).

The ICAO Council adopted a new tracking standard for certain international flights that requires crews to report their aircraft's positions at least every 15 minutes. It will become effective in March 2016 and applicable 08NOV2018. The new requirement also will be formalized as Amendment 39 to Annex

6—Operation of Aircraft, Part I. Only aircraft with a maximum takeoff weight of more than 59,000 pounds and a passenger seating capacity of more than 19 are affected by the rule. Also, the requirement applies to over oceanic and other remote areas, and where air traffic service is obtaining position information greater than 15-minute intervals.

Central/South America On 10DEC2015, the U.S. Centers for Disease Control and Prevention (CDC) issued a Level 1 Travel Warning for Mexico, El Salvador, Guatemala, Panama, Brazil, Columbia, Paraguay, Suriname and Venezuela, advising travelers to protect themselves against the Zika Virus. Zika is a viral disease transmitted by the Aedes aegypti mosquito, which also carries the dengue and chikungunya viruses.

KSAN/MMTJ San Diego/Tijuana A new pedestrian bridge spanning the U.S.- Mexico border now connects KSAN/San Diego and MMTJ Tijuana. The airport terminal, called Cross Border Xpress, opened last Wednesday and will improve travel for fliers going from Tijuana to the United States.

Kxxx/United States The U.S. House of Representatives voted in support of a measure to tighten control on the Visa Waiver Program, which allows travelers of certain nationalities to enter the U.S. without a visa. Under the new measure, the U.S. will now require visas for anyone who has traveled to Iraq or Syria in the past five years. The measure requires that all countries participating in the visa waiver program share intelligence with the U.S. regarding possible extremists.

FVFA/Victoria Falls Intl A new international passenger terminal opened at Victoria Falls International Airport (FVFA/VFA) on 02DEC.

Zxxx/China Chinese officials lifted a red alert they had put in place on 7 December after heavy smog greatly reduced visibility throughout the city and increased health risks for anyone venturing outdoors. The smog was so heavy it affected operations at nearby airports. Heavy smog is an annual occurrence in northeast China, and the problem is most severe during the winter months, when the morning fog becomes dense and power plants run at a higher rate to produce electricity for in-home heating. Because of this, you should expect similar alerts to be issued periodically throughout the remainder of the winter.

Yxxx/Australia FIR & Oceanic Changes. REF: AIC H24/14. ADS-B, GNSS and Mode S Transponder Equipment Mandates. Aircraft must be equipped with the mandatory avionics by certain dates. First Implementation date is 04FEB2016.

Cxxx/Canada Nav Canada has issued AIC 30/15 which addresses a proposal for amendment to the International Civil Aviation Organization (ICAO) Global Operational Data Link Document (GOLD) to optimize high frequency (HF) radiotelephony use in the North Atlantic (NAT) Region. The change eliminates NAT Region specific RT phraseology that has been made redundant with the availability of flight data to radio operators.

HCMM/Mogadishu Aden Adden, Somalia On the evening of 13DEC2015, African Union (AU) peacekeepers thwarted a suspected al-Shabaab attack on the Airport. The assailants, who were on speedboats, reportedly attempted to stage a seaborne attack on the facility. Heavy gunfire was reported throughout the encounter. Aden Adde International Airport has not been operational during nighttime hours since 1991. Currently, the airport and its compound host foreign embassies and delegates.

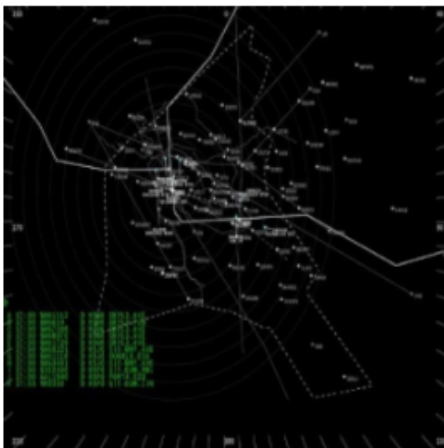
VOMM/Chennai Airport has resumed full operations after recovering from major flooding last week.

View the full International Operations Bulletin for 14DEC2015

Monday Briefing: Northern California airspace changes, Iraq closes airspace below FL300

Cynthia Claros
14 December, 2015

INTERNATIONAL BULLETIN	ISSUED BY FLIGHT SERVICE BUREAU
	SITA HNLFSXH AKLFSXH AFTN KMCOXAAL EMAIL INTL.DESK@FSBUREAU.ORG



Northern California ‘Metroplex’ airspace changes 07DEC On 10DEC, several revised and new SIDs and STARs associated with the Northern California Metroplex project will be published. These procedures will be the last major changes associated with the project. You can find the full document covering the changes [here](#).

Iraq closes airspace in Kurdish North below FL300 06DEC Iraq issued a new Notam on 06DEC warning of further Cruise Missile operations below FL310. ORBB A0423/15 states that “Flights operating at FL310 or above, and flights operating at ORBI, ORNI and ORMM are not affected”. You can read the full Notam [here](#).

OIIX/Tehran FIR German Authorities published a new Notam last week warning of a risk to flight for aircraft operating in the vicinity of OITT/Tabriz, OITL/Ardabil, and OIGG/Rasht. DFS, the German ATC agency, recommends overflying this general region at FL260 or higher. A6875/15.

Russia/Turkey Effective **01DEC**, Direct non-scheduled flights between Russia and Turkey are banned by decree of the President of the Russian Federation dated 28NOV. Prohibited for all airlines, regardless of the country of aircraft’s registration .

VOMM/Chennai Re-opened for 24-hour domestic and international flight operations today, five days after

it was shut due to flooding.

EGGX/Shanwick As of 07DEC, although system testing and acceptance is reportedly finished, no RLAT/Reduced Lateral Separation tracks have yet been published by Shanwick or Gander for the daily OTS. It appears uncertain what the first day of operation will be.

MUHA/Havana, Cuba Hotel Capacity in Havana is under severe strain at present. With increased traffic to Cuba, finding a hotel room is now a regular challenge. Some airline crews have had to be accommodated in Varadero instead, as there were no hotel rooms left in the city. Book well in advance, where possible.

OMxx/United Arab Emirates It has been advised to us, that the requirement for TCAS 7.1 also applies to the Emirates FIR. All aircraft arrivals/departures or those transiting UAE airspace from 01DEC must be 7.1 compliant, or a re-route around UAE airspace will be required. Another option is to obtain a special dispensation to operate, this is available from GCAA in AUH, but is reportedly difficult to obtain. For more details please see the UAE AIP 'Gen 1.5.6.6 Carriage of ACAS-II'.

Llxx/Italy There is a possible suspension of IFR non scheduled commercial traffic to/from LIRF and LIRA on Dec 8th. Please see NOTAM LIXX 1W2845/15 for the official restriction.

Llxx/Italy Ongoing volcanic emission from Mt. Etna may disrupt routings through Italian Airspace. Please check the Toulouse VAAC for the most up to date info.

ESxx/Sweden have been forced to suspend, with immediate effect, flights from northern Iraq to Sweden following a directive from the Swedish Transport Agency (Transportstyrelsen). In a statement issued last week, Transportstyrelsen said the increased military activity across northern Iraq posed a threat to civilian flights thus warranting a ban.

VTxx/Thailand The FAA has downgraded Thailand to a Category 2 after an audit of the country's Department of Civil Aviation (DCA) in October showed continued non-compliance with International Civil Aviation Organization (ICAO) safety standards. The FAA's move comes five months after the ICAO formally instituted a Serious Safety Concern (SSC) against Thailand for failure to adequately address shortcomings identified during a Universal Safety Oversight Audit Programme (USOAP) inspection in January.

MUxx/CUBA Will be reinstating travel permits for doctors. On 01DEC, Cuba announced that it was reinstating the travel restrictions it had previously imposed on doctors, which requires doctors to obtain permission before leaving the country. The restriction had been lifted in 2013, but is now being re-imposed, as the government claims that its universal and free health care services are being "seriously affected" by the number of doctors leaving the country.

Zxxx/China will mandate that its air traffic controllers use only English when communicating with pilots of any airline starting in 2017, according to the Civil Aviation Administration of China (CAAC). The move will improve situational awareness for foreign pilots. Currently, ATC at all airports across China use English to communicate with pilots of foreign airlines and Mandarin with those flying for Chinese carriers. The CAAC will announce the exact date for implementation later, ensuring the readiness of all stakeholders involved in the process.

ZUUU/Chengdu has completed the on going construction work. The parking bay has been released and is available on a first come, first serve basis. This applies to overnighing aircraft as well.

View the full International Operations Bulletin for 07DEC2015

Monday Briefing: Thanksgiving ATC Traffic Plan, New Missiles Warning - Baghdad FIR

Cynthia Claros
14 December, 2015

INTERNATIONAL BULLETIN	ISSUED BY FLIGHT SERVICE BUREAU
	SITA HNLFSXH AKLFSXH AFTN KMCOXAAL EMAIL INTL.DESK@FSBUREAU.ORG



Thanksgiving ATC Traffic Plan 23NOV The FAA have published details of Traffic Management plans for the east coast of the US during the Thanksgiving holidays, effective 24NOV to 30NOV. The highest volume days will be 25NOV and 29NOV, expect delays on north/south routes to Florida during this period. Read the full details of the airspace initiatives [here](#).

New Missiles Warning - Baghdad FIR 23NOV A NOTAM issued today by the Iraqi CAA indicated anticipated cruise missile traffic across the FIR from the Caspian Sea, leading also to the closure of Erbil Airport until Wednesday. See below for further.

EGGX/CZQX Shanwick/Gander The new NAT Track Structure and Reduced Lateral Separation Minima procedures, initially planned for 12NOV, are now re-planned for Monday 30NOV, following the resolution of computer issues related to the new format.

UIII/Irkustk will close the main runway on 01, 08, 15 and 22DEC from 1210-1450Z for repairs, not available as alternate during these times. As this is a common Polar alternate, check NOTAMS for current information.

UEEE/Yakutsk will close 31DEC-02JAN, not available for movements or as alternate after 0500Z on 31DEC.

EINN/Shannon has a runway closure on 23NOV from 2345Z-0500Z, not available as alternate. Caution

before using as NAT alternate on this date. If another ETOPS alternate is required, consider EIDW/Dublin, EGAA/Belfast or EGPF/Glasgow.

ORBB/Baghdad FIR Iraq published the following NOTAM (A0413/15) effective today 23NOV CRUISE MISSILES CROSSING NORTHERN PART OF IRAQ, FROM CASPIAN SEA TO SYRIA, NORTH OF REP OTALO, NO CRUISE MISSILE OPS IN THE REST OF ORBB FIR, FLIGHTS OPERATING AT FL310 OR ABOVE AND FLIGHTS OPERATING AT ORBI, ORNI AND ORMM NOT AFFECTED. SFC - 30000FT MSL, 23NOV 0500Z - 25NOV 0500Z. In addition Erbil and Sulamaini airports will be closed until Wednesday.

OLBA/Beirut FIR Initially issued a NOTAM on 20NOV, closing a large part of the FIR including routes G2/UG2, R219/UR219, L620/UL620, in response to Russia's request for a training exercise in their airspace. Subsequently the government reversed their decision, and the NOTAM was cancelled on 22NOV, reference A0293/15.

BKPR/Kosovo Airspace to the north of Kosovo was released from UN/KFOR restriction, to Serbian control, on 20NOV, meaning that arrivals and departures from Europe will no longer have to make a circuitous approach and can depart to the north. Procedures are not yet in place, but technically the airspace is no longer restricted. For most operators this will see a route saving of up to 100nm.

GABS/Bamako, Mali. With great sadness we must report that 6 crew members of Volga-Dnepr Airlines were amongst those killed in the attack on the Radisson Hotel in Bamako on Friday.

KXXX/USA Thanksgiving Holidays 26NOV and 27NOV leading to increased traffic flows across US, but anticipated reduced traffic across the NAT region.

KXXX/USA Runway Closures DTW-RWY 4L/22R CLOSED SEA-RWY 16C/34C CLOSED LAS-RWY 7L/25R CLOSED LAX-RWY 6R/24L CLOSED 23/1430

FJDG/Diego Garcia Parking Stands A6-11 and B4-8, as well as some taxiways, closed for repair effected 19NOV.

NWWW/Noumea continues with runway closures 23-26NOV affecting the main runway.

FABL/Bloemfontein, South Africa will not accept widebody diversions 19-26NOV.

GCCC/Canarias FIR will have a HF outage today 23NOV from 0900-1500Z. In case of non-contact, use CPDLC, or HF via Santa Maria or Sal for relay.

LIXX/Italy ATC Strike planned for 24NOV 1200-1600Z has been postponed, refer NOTAM A8227/2015.

HLLL/Tripoli FIR Additional new southbound route available via RASNO UY751 LOSUL, for those operators using the airspace.

LFEE/Rheims ATC Strike 23NOV/0500Z - 28NOV/0500Z Confirmed for Monday only at this time - NOTAM F2093/15 refers. AOs are advised to reroute, avoiding LFEE area of responsibility. Those that are not able to reroute may expect delay.

RJJJ/Japan FIR will have a comms outage affecting Flight Plan filing on 25NOV, from 1410-1720Z. To avoid delays and missing plans, Flight Plans should be filed earlier than normal to RJJJZQZX for overflights and landings. Refer to J7545/15 for specifics.

SPJC/Lima, Peru Effective 12NOV the Location Indicator for the main airport in Lima, Jorge Chavez, changes from SPIM to SPJC.

TTZP/Piarco ATC has issued a request for operators to include KNYCZZZX when filing plans entering New York Oceanic airspace from the Piarco FIR, or operating east of 58W within the Piarco FIR, in order that

New York has details of the aircraft.

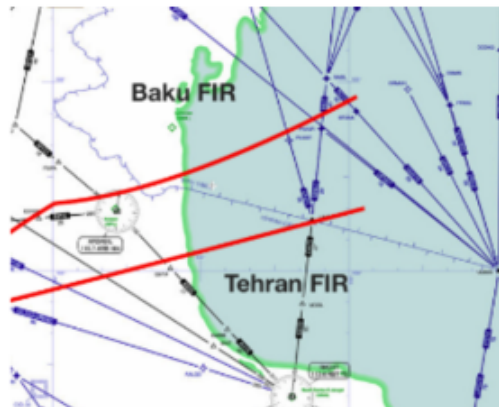
With regard to business aviation, but equally interesting for airlines and private operators, the NBAA has published a useful list of the Top10 Issues for International Operators in 2016.

View the full International Operations Bulletin for 23NOV2015

Monday Briefing: North Atlantic Changes, Caspian Sea Missiles

Declan Selleck
14 December, 2015

INTERNATIONAL BULLETIN	ISSUED BY FLIGHT SERVICE BUREAU
	SITA HNLFSXH AKLFSXH AFTN KMCOXAAL EMAIL INTL.DESK@FSBUREAU.ORG



19OCT2015 Flight operations in the NAT region will see significant changes in around three weeks time, including new 'half-degree' NAT tracks, new Entry Points in Gander and Shanwick OCA's, and several procedural changes. A Special Bulletin with plotting chart, summarising the changes, will be issued by Flight Service Bureau next week.

19OCT2015 Last week 26 cruise missiles were launched across International air routes in Azerbaijan, Iraq, and Iran, with reports suggesting 4 did not travel as intended. The risk to aircraft operators is summarised in our International Ops Notice 10/15, see below for details.

RPHI/Manilla FIR, Philippines Typhoon Koppu has maintained its strength as it continues to move northward with slightly increasing forward speed along the shores of Ilocos Sur, Luzon. Current location (1200Z Monday) is to the west of RPLI/Laoag Airport. It is forecast to weaken to a Tropical Storm within 24 hours. No reports of airports affected so far.

OMDW/Dubai World hosts Dubai Airshow 08-12NOV. Landing Permit required for all flights, 3 days processing, standard documents and requirements. Slot required for OMDW, window +/- 5mins. Show details at www.dubaiairshow.aero

OPRN/Islamabad, Pakistan closed 1300-1800 daily due runway works 18-28OCT.

SEXX/Ecuador A new DGAC resolution now effective permits non-scheduled aircraft to land without a Landing Permit as long as the aircraft is operating under private ops, will not stay longer than 72 hours in Ecuador, and visits only one location in Ecuador. The official document is [here](#) (in Spanish).

VHHH/Hong Kong with effect 25OCT (IATA Winter 2015) will amend slot issuing procedures to give priority to operators with higher capacity aircraft, and where same types conflict for the same slot time, lower noise levels.

LIXX/Italy ATC Strike confirmed for 24OCT (Saturday) 0800-1600, service will be provided to Overflights and Intercontinental flights only.

LTXX/Turkey Traffic operating through the south eastern part of Turkish airspace to/from Tehran and Baghdad FIRs should check Notams for restrictions. Several restrictions up to FL310 due to military operations.

EGXX/Shanwick Large scale Military Exercise 'At Sea Demonstration' ASD15 affecting OEP's ERAKA and GOMUP starts on 19OCT.

LFxx/France Datalink implemented from 22OCT LFRR/Brest and LFBB/Bordeaux ACC from 0900L. Initial phase, no ACL (Clearance via CPDLC), and aircraft must be on Eurocontrol whitelist. Ref France AIC A22/15.

VNXX/Nepal continues to experience shortages of fuel due to a halt in shipments coming from India. Available fuel for domestic airlines is rapidly decreasing, and authorities worry that domestic flights will soon be unavailable. The Nepalese government has requested that international airlines carry return fuel or refuel at airports en route, as Tribhuvan International Airport (VNKT/KTM) has no available fuel.

View the full International Ops Bulletin for 19OCT2015.