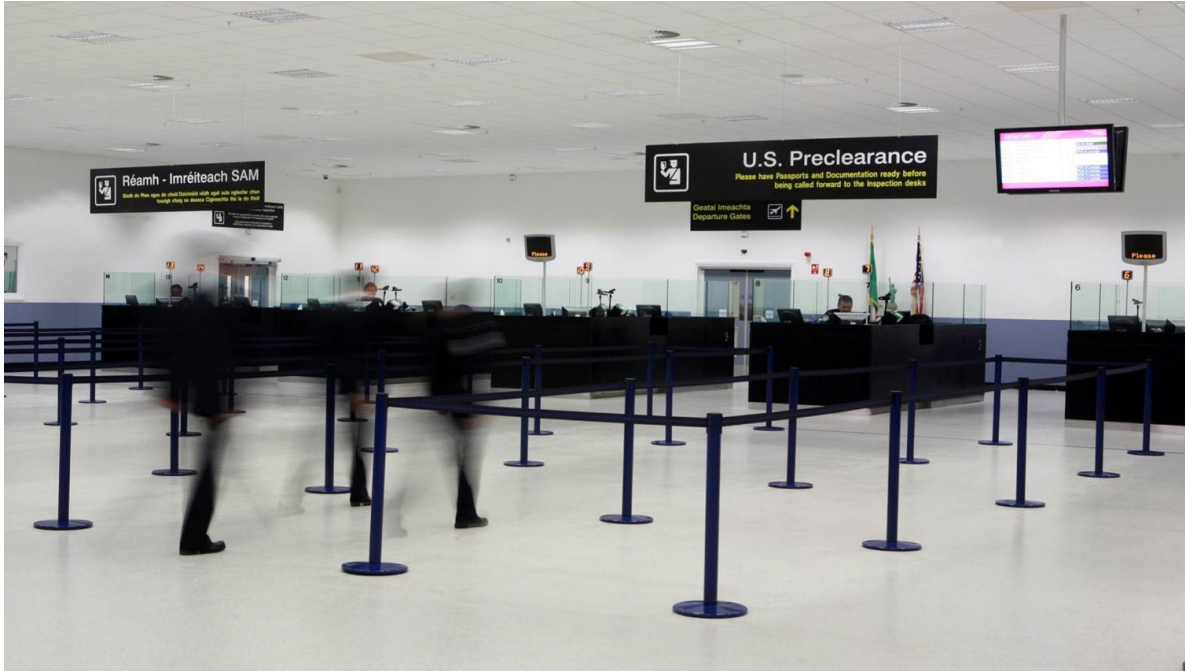


# US Pre-Clearance: How does it work?

David Mumford

12 November, 2024



## What is US Customs and Border Protection Pre-Clearance?

This service basically allows aircraft flying from certain approved airports direct to the US to complete their entry procedures at their departure airport – instead of on arrival in the US.

## Where can I do it?

If you're a bizav flight (i.e. private or charter), you can only do it at **EINN/Shannon** and **TNCA/Aruba**.

*Scheduled airline flights can do it at these airports too:*

- **The United Arab Emirates** – OMAA/Abu Dhabi
- **The Bahamas** – MYGF/Freeport or MYNN/Nassau
- **Bermuda** – TXKF/Bermuda
- **Canada** – CYYC/Calgary, CYEG/Edmonton, CYHZ/Halifax, CYUL/Montreal, CYOW/Ottawa, CYYZ/Toronto, CYVR/Vancouver, or CYWG/Winnipeg
- **Ireland** – EIDW/Dublin

## Where can I fly to in the US once I've Pre-Cleared?

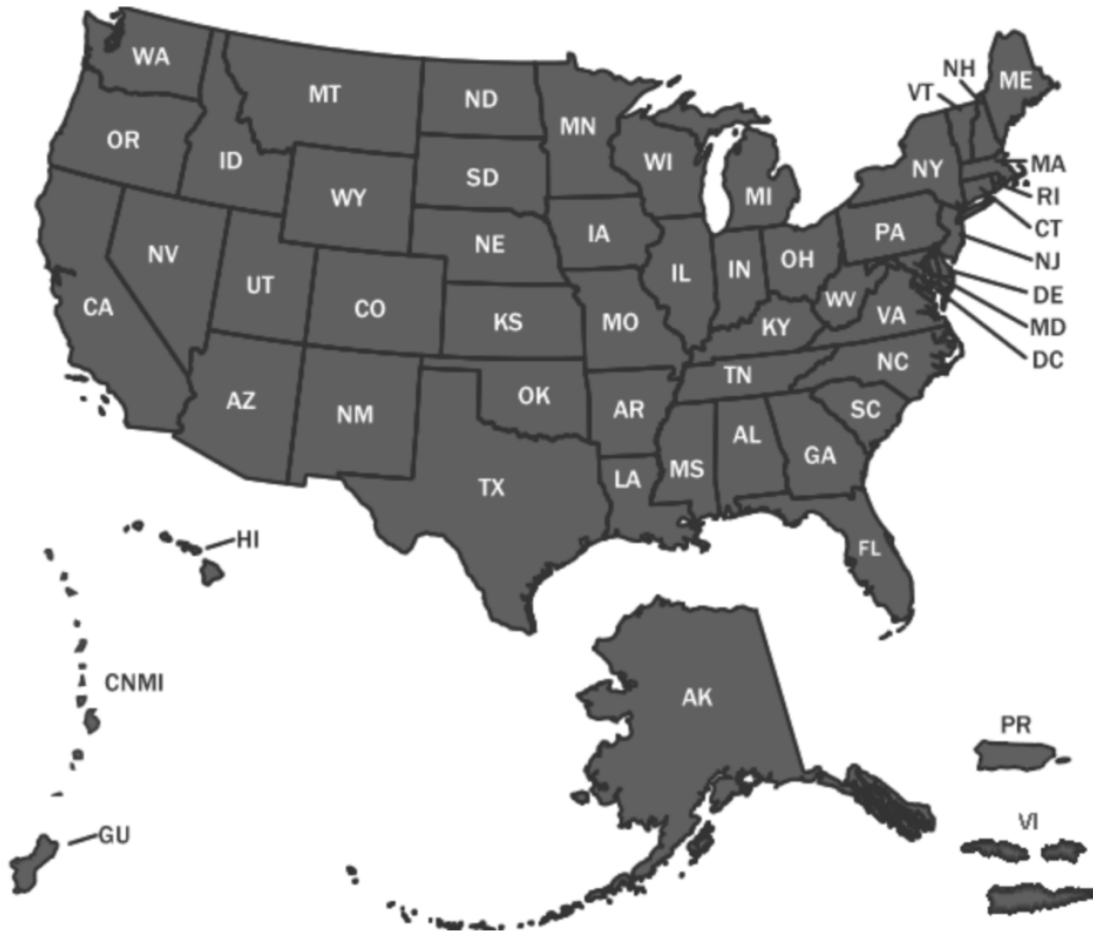
Turns out it's not that easy to find a list of US airports approved for the arrival of Pre-Cleared aircraft. But thanks to Signature FBO at EINN/Shannon, here is a copy:

Airport Code	Description of Airport	City Name	State	USDA Compliance Agreement In Place
KBHM	Birmingham International Airport	Birmingham	Alabama	Y
KDCU	Pryor Field Regional Airport	Decatur	Alabama	Y
KHSV	Huntsville International Airport	Huntsville	Alabama	Y
PANC	Anchorage International Airport (Ted Stevens)	Anchorage	Alaska	Y
PAFA	Fairbanks International Airport	Fairbanks	Alaska	Y
PAKT	Ketchikan International Airport	Ketchikan	Alaska	Y
KIWA	Williams Gateway Airport	Mesa	Arizona	Y
KPHX	Phoenix Sky Harbor International Airport	Phoenix	Arizona	Y
KTUS	Tucson International Airport	Tucson	Arizona	Y
KNYL	Yuma International Airport	Yuma	Arizona	Y
KLIT	Adams Field Airport	Little Rock	Arkansas	Y
KROG	Rogers Municipal Airport	Rogers	Arkansas	Y
KCRQ	McClellan-Palomar Airport	Carlsbad	California	Y
KSUU	Travis Air Force Base	Fairfield	California	Y
KFAT	Fresno Yosemite International Airport	Fresno	California	Y
KLAX	Los Angeles International Airport	Los Angeles	California	Y
KNUQ	Moffett Federal Airfield	Mountain View	California	Y
KOAK	Oakland International Airport	Oakland	California	Y
KPSP	Palm Springs International Airport	Palm Springs	California	Y
KMCC	McClellan Air Force Base	Sacramento	California	Y
KBAB	Beale Air Force Base	Sacramento	California	Y
KSMF	Sacramento International Airport	Sacramento	California	Y
KSAN	San Diego International Airport (Lindbergh Field)	San Diego	California	Y
KSFO	San Francisco International Airport	San Francisco	California	Y
KSJC	Mineta San Jose International Airport	San Jose	California	Y
KVNY	Van Nuys Airport	Van Nuys	California	Y

Click for PDF.

Finding a list of US International Airports of Entry is pretty easy, just go to the CBP website and use their interactive map. But it's worth noting that **not all US International Airports of Entry are on the list of those approved to accept Pre-Cleared flights**, due to lack of agriculture agreements, and/or local CBP agreements there.

To find a Port of Entry in your state, please click on the map.



[Click for CBP website.](#)

### How does Pre-Clearance work in reality?

US CBP has published this guide on exactly **how the Pre-Clearance service works**, but here's the lowdown:

1. **Request the service with CBP** - Get in touch with CBP telling them that you want to do it! Pass them a bunch of information - details about the flight, passengers and crew. You can do this step through your ground handler (recommended).
2. **Submit APIS** - Slightly tricky here, because for Pre-Clearance you have to submit this no less than one hour before the scheduled Pre-Clearance processing time itself, rather than the departure time from the Pre-Clearance airport. For example, you want to fly from EINN-KALB at 2pm, and you've got your Pre-Clearance set up for 1pm, so that means you need to file your APIS no later than 12pm!
3. **Pre-Clearance approval** - US CBP will email notice of approval, including the appointment confirmation number.
4. **The Pre-Clearance procedure** - When you arrive at the Pre-Clearance airport, CBP will conduct the same procedures as if you were at an airport in the US. Travelers and luggage are screened and the aircraft is inspected.
5. **Departure** - Crew, passengers and luggage board the aircraft, and off you go. (And remember

- no opening of any aircraft doors from this point before departure!) The kindly CBP chaps you've just dealt with will zap your info across to their counterparts at whichever US airport you're flying to, so everything should be nice and smooth on arrival.

6. **Arrival** - Upon arrival in the US, bag up your garbage for CBP to collect. Note that if you have to land somewhere other than where you said you'd be landing in your APIS, Pre-Clearance approval will be voided and you'll have to go through the normal entry process.

Remember, if you're a bizav flight, you can only do Pre-Clearance at EINN/Shannon Airport or TNCA/Aruba. So here's some info specific to both of these airports...

### **Pre-Clearance at EINN/Shannon**

One of the FBOs there is **Signature Aviation**, and they have provided a summary of what you can expect when you Pre-Clear, with a few more details than the basic summary above. You can download the PDF [here](#), but key points are: you must give 24hrs notice, and the CBP office opening hours are 0900-1700 local each day with out of hours available between 0700-0900 and 1700-2100 local. You can contact them at [snn@signatureflight.ie](mailto:snn@signatureflight.ie).

### **Pre-Clearance at TNCA/Aruba**

**Jet TNCA** is the only FBO at Aruba, and they can provide Pre-Clearance to bizav flights. They need 24hrs notice, it costs \$315, and CBP there are open from 0930-1100 and 1530-1700 local time each day (not available on afternoons at weekends). You can find more info [here](#), and contact them at [ops@jet-tnca.com](mailto:ops@jet-tnca.com).

### **A note on the US Virgin Islands**

Technically, airports in the Virgin Islands "offer" this service too, but it's not really Pre-Clearance in the same sense as at EINN and TNCA - here it's actually more of a requirement than an optional extra. The US CBP say the following:

*For flights leaving the USVI enroute to other United States locations, GA aircraft operators are required to contact CBP in the USVI prior to departure. Aircraft cannot be moved from the U.S. Virgin Islands to other U.S. locations until CBP Agriculture Specialists (CBPAS) have:*

- *had the opportunity to inspect the aircraft;*
- *crew, and passengers; and*
- *the CBPAS has provided clearance for departure from the USVI.*

**Standard Aviation FBO at TIST/St Thomas** say that Customs requires a minimum notice of 2hrs in advance of the appointment time. Appointments are available 7 days a week from 0800-1630 local, and it costs \$250. Contact them at [ops@sa-stt.com](mailto:ops@sa-stt.com).

---

## **Shannon, BizJets and Level Busts**



Level busts at EINN/Shannon Airport are a problem. A big problem. Big enough that the IAA have made a presentation on them, alongside the NBAA. Why the NBAA? Well, because a *disproportionate* number involve North American Business jets.

### **We'll start with a little story.**

*Once upon a time, not so long ago, a pilot called Hank\* (\*name changed for anonymity) was flying his Business Jet over from the US to Europe, and he decided to stop off at Shannon airport. Shannon is, after all, on the Emerald Coast so it's very pretty but more importantly its just on the other side of the Atlantic, you can do your US customs stuff there, and they have fuel for your airplane and Guinness for you.*

*So off Hank heads, and he's done his homework. He's planned for the whole NAT HLA bit. Alas, though, he has not planned for the actual landing into Shannon bit. Tired, distracted by the thoughts of Guinness and caught out by a much lower transition altitude, Hank forgets to change his altimeter from inches mercury to hectopascals, and when ATC says "Set QNH 988" what does he do?*

*He sets 2988inHg...*

*And so he descends down, aiming to level off at a nice safe altitude. Only his altimeter is over-reading by 720 feet. Hank gets within 2nm and 500ft of some pretty sticky-uppy terrain before ATC spots the errant aircraft and saves the day...*

*So, Hank was added to a long list of North American Business Jet operators who had a nasty level bust in Shannon and was embarrassed.*

Now, the story really begins...

### **I am not a North American BizJet operator so it doesn't apply to me?**

Well, it could and it's useful for anyone to think about really. Level busts are an issue all over, and if you operate into any high traffic density spot (London is a particularly good example) then even **the most minor of busting can result in a traffic conflict.**

Then there is **the risk of CFIT** – controlled flight into terrain. Busting downwards in areas with high terrain could lead to this. In fact, most CFITs occur during the approach and landing phase.



**300 feet is your limit.** Anything beyond that and you've got a bust on your hands.

### **What's with Shannon and North American BizJet operators?**

EINN/Shannon is a **US Customs and Border pre-clearance airport**, and it is in a handy spot on the west coast of Ireland making it perfect for aircraft with slightly less range to hop between the US and Europe. So it gets a higher number of Bizjets from the US. In fact, **30% of their flights are North American BizJets** (out of 25,000 or so flights a year).

But despite being only 30% of traffic, they are involved in the majority of level busts. In 2019, 68% of busts in Shannon were, you guessed it, by the NABJ brigade. So far, **in 2022, they've been responsible for a whopping 100%!**

### **So why does Shannon see so many?**

Well, in all fairness, there are some things that make it more complicated if you're used to flying in the US.

Shannon, like most of Europe, uses **hPa instead of inches of mercury**, and this can lead to "**mis-setting**" on the QNH. Like we saw with poor Hank (based on an actual true story) – this is probably the most **common cause of level busts** in Shannon.

Then there is the **transition altitude**. Unlike the US and their nice standard always 18,000ft, **Shannon uses 5000ft** which can lead to a late (or early) change to and from local QNH. Chuck in some weather and particularly non-ISA one and there's your problem.

And of course, folk heading in from a long North Atlantic night flight might be **tired, unfamiliar, or just not planning it very well.**

### **So what can pilots do to avoid level busts?**

- Add a **mention of the risk into your briefing** if you're heading to Shannon. Or anywhere where level busts are an issue.
- Remember **"High to low: careful go!"**
- Don't forget to **set QNH in hectopascal** and not inches mercury when operating into Europe.
- **Check the transition altitude**, and plan ahead if it's a low one.
- **Avoid aggressive descents** – you can ask ATC for more track miles if you need.
- Read the NBAA/IAA presentation for more info.

---

## **Liquid Lunch**

OPSGROUP Team  
12 November, 2024



Remember the 100ml rule? The one that's been there since 2006, causing endless hassles at security. Well, its changing!

### Why does that matter for air crew?

Good question. Is this really an operational issue to talk about? We are 'Opsgroup' not 'VaguelyInterestingInfogroup' after all...

**Well, the rule is here for crew too** and if you've ever operated through a UK airport you will know they can take it very seriously indeed. I once had my healthy hummus lunch taken from me because hummus is slightly more liquid than solid.

So, the change will mean:

- An easier time going through security for Air Crew as well as passengers
- Possibly some changes on what you can stock up on during layovers (if you don't check your crew bags)
- The option to have better coffee than what you might get onboard
- **General security changes**

### Let's take a quick look at the security side of things.

Passengers and crew will be able to carry whatever liquids they require, so long as they fit in their hand luggage. **Remember** though, if you are transiting another airport, **their liquid limits will still apply.**

There are a few liquidy products worth looking out for as well. The top two we are aware of are peanut butter and Frankfurter sausages in jar available in EDDF/Frankfurt airport duty free.

### Why?

Well, the liquid explosive scanning machines work off detecting a range of chemical elements, and also look at density. Fun fact - the molecular makeup of peanut butter is actually very similar to nitroglycerin, while the juicy sausagey water in frankfurter jars is apparently of a density that some scanners struggle

with.

**Then there are actual banned substances.**

Possibly more important to remember – these are, obviously, still banned. There is **no change to the dangerous goods restrictions.**

Toxic, flammable, infectious, over 70% alcohol, paint etc is **all still not allowed.**

### **Shannon Airport**

EINN/Shannon is of course a **gateway airport for the USA.** The US Pre-clearance status means you can undergo all immigrations, customs and agriculture inspections here.

Which is why we thought this was worth mentioning because it will be a nice change for a lot of folk heading through, but those **agriculture restrictions remain in place.**

All travelers entering the United States are required to declare anything with meats, fruits, vegetables, plants, seeds, soil, animals, as well as plant and animal products – **including soup or soup products.**

Check out the **USA CBP website** for more info. There is quite a handy “*what can I bring in for my own personal guzzling purposes*” list here, published by them.

### **Where else are the scanners going to be?**

Well, the UK is planning to have them installed in **all their international airports by December 2022.**

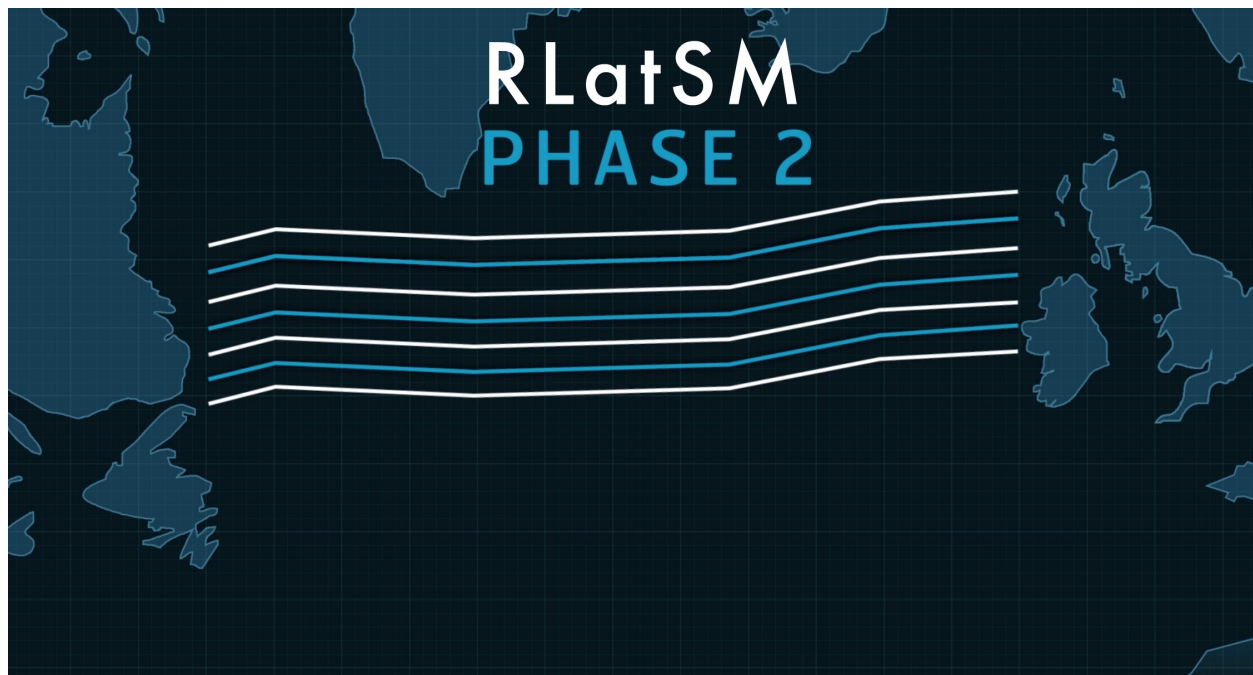
TSA in the USA is also planning on having over 1000 of them **active for Summer 2022.** So watch this space.

---

## **More NAT half-tracks are coming**

David Mumford  
12 November, 2024





Update Jan 23: The current phase of the trial for RLatSM Tracks will come to an end on March 29, when PBCS standards will be introduced for the NAT tracks. More info on that [here](#).

Since Dec 2015, there have been three daily NAT tracks spaced by one-half degree between FL350-390. These are officially called 'RLatSM Tracks' (Reduced lateral separation minima), but we all just prefer to call them 'Half-Tracks'.

Separating flights by one-half degree of latitude rather than the standard one degree means that aircraft can be separated laterally by 25nm, which helps improve the efficiency of North Atlantic operations.

**In Jan 2018 the Half-Tracks will be expanded from the three that now run each day, first by one additional track and then (maybe) to all NAT Tracks between FL350-390 inclusive. Jan 4 is the earliest day that this might happen, but because they will be decided tactically, it will most likely be the first busy day after Jan 4.**

If you want to operate on the RLatSM tracks, you're going to need CPDLC, ADS-C, and RNP4; along with the other standard pre-requisites for operating in the NAT HLA between FL350-390: an HLA approval, TCAS 7.1, RVSM approval, two LRNS, and a working HF radio. To figure out where you are welcome on the NAT, depending on what equipment and training you have, check out our quick and dirty guide [here](#).

One thing to be cautious of when using the half-degree tracks - most aircraft FMC's truncate lat/long waypoints to a maximum of 7 characters, so it will often show up as the same waypoint whether you're operating along whole or half degree waypoints. So when operating on the half-tracks, just remember to double-check the full 13-character representations of the lat/long waypoints when you enter them into the FMC.

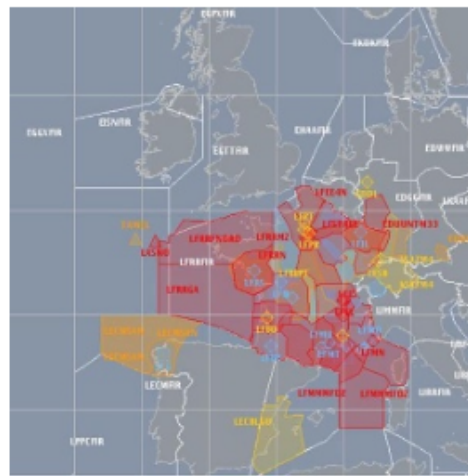
For more details about the new RLatSM procedures, have a read of the UK AIC 087/2017 [here](#).

---

# Midweek Briefing 01JUN: EASA Updates 'Suspect Aircraft' Guidelines, 8th French ATC Strike

Cynthia Claros  
12 November, 2024

INTERNATIONAL BULLETIN	ISSUED BY FLIGHT SERVICE BUREAU
	SITA HNLFSXH AKLFSXH AFTN KMCOXAAL
	EMAIL INTL.DESK@FSBUREAU.ORG



**EASA Updates 'Suspect Aircraft' Guidelines** 01JUN EASA has published new guidelines for inspectors to assess which aircraft should be prioritised for SAFA ramp checks in Europe and SAFA compliant states. Read the article.

**8th French ATC strike this weekend** 01JUN Notification has been given by French ATC Unions of a Three Day Strike this coming weekend from Friday-Monday, starting at 0400Z Friday 03JUN. Read the article.

---

**ZZZZ/China** The new 144 hour visa-free rule is extended to Nanjing Lukou Airport of Jiangsu, Hangzhou Xiaoshan Airport of Zhejiang, and all air, sea and railway ports of Shanghai, including Pudong Airport, Hongqiao Airport, Shanghai Port International Cruise Terminal, Wusong Passenger Transport Center and all railway stations in Shanghai.

**CYMM/Fort McMurray** is scheduled to reopen 10JUN to regular commercial operations. The airport has been closed to normal traffic due to a significant forest fire.

**MMAA/Acapulco** after an outage lasting several years the ILS for RWY 10/28 is operational again.

**KSEA/Seattle** has runway 16C/34C closed until 27JUN for repairs. ATC initiatives possible through the construction.

**EINN/Shannon** and **EICK/Cork** will be testing a new "Remote Tower" system from 06JUN until September, where at quieter times the controller in Dublin will provide the ATC service to flights at Shannon and Cork. The IAA says airspace users will not notice the change. We think you might.

**LFLL/Lyon** will be re-numbering their runway to 17/35 from 18/36 in September.

**VOTP/Tirupati** will begin International operations beginning the end of June with flights to the U.S. The airport had recently upgraded their customs systems and other procedures.

**LZZZ/Mediterranean** Despite some reports, NATO operations in Libya appear unlikely. There are several new airspace NOTAMs, but is anyone still flying to Libya?

**LFZZ/France** due to ongoing protests at french oil refineries and fuel shortages the French CAA has advised to tanker in as much fuel as possible to help mitigate any issues. Please check with local handlers for any specific fuel constraints.

**SPZZ/Ecuador** Volcano Sangay is producing ash that extends up to 20,000 feet. Movement is towards the west at 10 knots. Please check with the Washington VAAC for the latest advisories.

**LLBG/Tel Aviv**, Israel On 26-27MAY strike action in the form of a work go-slow took place. The slowdown has primarily affected outgoing flights by increasing the time between takeoffs, but it has been reported that if the slowdown continues it will begin to affect incoming flights.

**NVZZ/Vanuatu** 27MAY a 5.0 magnitude earthquake struck west of Vanuatu. The quake was centered approximately 60 mi/95 km northwest of Port Vila and was measured at a depth of about 6 mi/10 km. No tsunami warning has been issued.

**DAZZ/Algeria** At 0054 local time (2354 UTC) on 28MAY, a magnitude 5.2 earthquake struck approximately 35 mi/55 km southeast of Algiers, the capital of Algeria. The epicenter of the earthquake registered a depth of approximately 7 mi/ 12 km. Following the quake, there were no reports of injuries or damage.

**FNZZ/Angola** A yellow fever outbreak has caused 301 deaths so far this year. The number of suspected cases is 2,536. The outbreak began in Luanda and has since spread to areas throughout the country, particularly along the coast and in the central regions, despite a large-scale vaccination program.

**VDPP/Cambodia** Political tensions are high in Cambodia following contested national elections in 2013. Arrest warrants have been issued for the leaders of the opposition CNRP party and the situation is unpredictable. On 30 May police blocked roads in southern Phnom Penh to prevent opposition CNRP supporters from carrying out a planned protest march. Further disruption is possible if the remaining leader is arrested. The opposition party has announced it will hold mass, non-violent, demonstrations and a number of unions have said they will strike in support.

**LFZZ/France** Despite recent strikes, the French government has stated it will not back down from labor reforms despite street protests and refinery blockades. The CGT Union has threatened to disrupt the upcoming Euro 2016 soccer tournament if the government does not back down; however, after meeting with representatives of the oil industry, government officials stated that the situation at fuel depots is improving.

**Ramadan** starts on 06JUN, for one month. If you are operating to any Islamic countries, expect the usual slowdown in work, longer processing times for permits, and closures.

**OEZZ/Saudi FIR** Saudi Arabia has intercepted a ballistic missile that was fired from Yemen, after which Saudi aircraft bombarded the missile's platform. A Saudi official stated that the country may reconsider the kingdom's truce with Yemen, as a result of the strike. The missile launch was the second strike in May.

**RCZZ/Taiwan** On 31MAY, a 6.1 magnitude earthquake struck approximately 70 mi/115 km northeast of Taipei. The quake was measured at a depth of about 150 mi/240 km. There were no reports of damage, and no tsunami warning was issued.

**UKZZ/Ukraine** On 29MAY, attacks by pro-Russian rebels in eastern Ukraine, violating the ceasefire signed in February 2015, killed five Ukrainian military officers and wounded four others. The latest attacks follow a 24 May report released by Ukrainian authorities, stating seven soldiers were killed on that day, making it the deadliest day for Ukrainian forces since August last year.

**KZZZ/USA** The State Dept has issued a warning to arriving travellers this summer to make sure that they have all necessary documents to enter the United States – there have been multiple changes to the rules this year (see Active Bulletins below for more on this).

[View the full International Bulletin 01JUN2016](#)

---

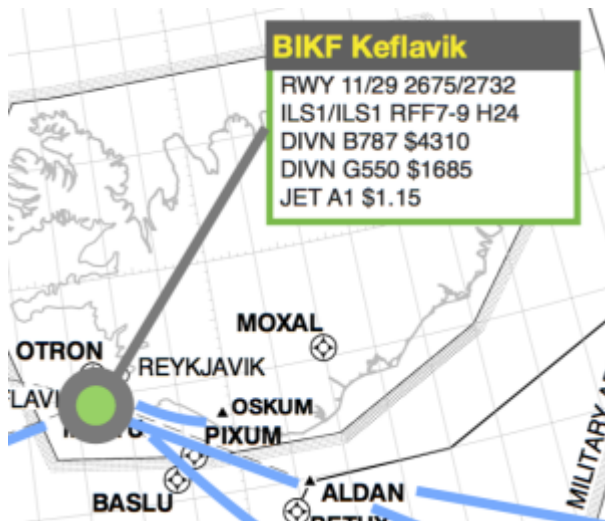
## Cheapest Jet fuel on the Atlantic? \$1.15 a gallon

Declan Selleck  
12 November, 2024



The cost of a gallon of Jet A1 has been rather unstable lately. Over the last couple of years, we've produced several versions of our **North Atlantic Plotting Chart**, and as we've done so, the price of Jet A1 has dropped each time across the Atlantic seaboard.

So, where is cheapest? **Answer: Keflavik.** \$1.15 for a gallon of Jet A1 at the best available commercial airline rate. Now, that was six weeks back or so, when we did the research for the chart, and prices have been rising since (tracking the Oil price pretty well).



Next best on the list is Shannon, Ireland – \$1.37 USD/USG, thanks to the Shannon Free Zone, which strips out most of the taxes that the EU levies as standard.

Next question, then: most expensive? **Narsarsuaq, at \$5.65 for a gallon.** Why so much more? Primary reason: getting the fuel to BGBW is an awful lot harder than getting it to BIKF. The rest is down to the difference in government tax policy.

Fuel price is of course not the only tech stop or diversion consideration on the North Atlantic, but given that security, safety, and service quality is pretty much equal across the entire NAT region, it's an important factor – along with the cost of handling.

If you look at the snapshot above, you can see that your G550 will cost around \$1685 including Airport Fees; taking a B787 to KEF will run around \$4300 all in.

The **North Atlantic Plotting Chart** has all this information for all the common North Atlantic ETOPS/Diversion Fields – namely: CYYT/St Johns, CYQX/Gander, CYJT/Stephenville, CYYR/Goose Bay, CYFB/Iqaluit, BGSF/Sondrestrom, BGBW/Narsarauq, BIKF/Keflavik, EGPF/Glasgow Intl, EGAA/Belfast, EINN/Shannon, and LPLA/Lajes.

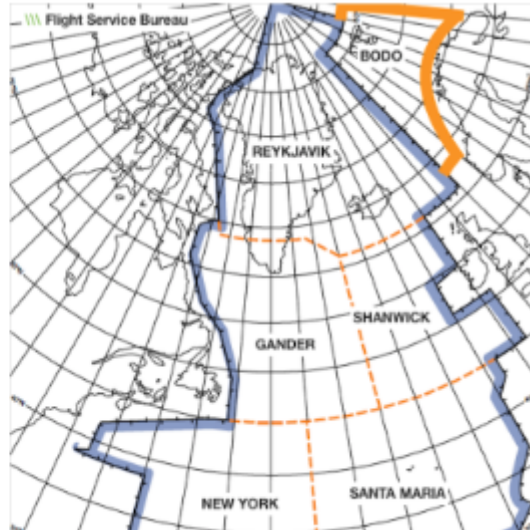
[Download NAT Plotting Chart](#)

---

## Midweek Briefing: Mexico Volcano Eruption, Atlantic MNPS is over... Introducing HLA

Cynthia Claros  
12 November, 2024





**Mexico Volcano Eruption** 29JAN Popocatepetl Volcano, which is 55 kilometres southeast of Mexico City, had its last major eruption in 2000; it erupted on Tuesday this week affecting flight operations at **MMPB/Puebla**, and with the risk of further eruptions affecting operations in Mexico City itself.

**Atlantic MNPS is over... introducing HLA** 29JAN Effective next week, 04FEB, there are another round of changes on the North Atlantic – HLA/High Level Airspace is the replacement for MNPS, and the airspace is extended with Bodø joining Shanwick, Gander, Reykjavik, New York, and Santa Maria. Read our **International Ops Notice 01/2016**.

---

**North Atlantic** Effective 04FEB MNPS Airspace is replaced by HLA/High Level Airspace on the North Atlantic – extended with Bodø joining Shanwick, Gander, Reykjavik, New York, and Santa Maria. RNP4 or RNP10 now required. Read our **International Ops Notice 01/2016** or our blog post: **Did you know MNPS is over?**

**TTxx/Trinidad and Tobago** The annual Carnival in Port of Spain will take place on February 8 and 9, 2016. Travel and tourism activities are expected to continue for up to two weeks after the celebration and will be busiest during weekends. February 10, 2016 (Ash Wednesday) is expected to be the busiest day of the year at the Port of Spain airport. February 8 to 9, 2016 is also expected to be a congested time for departures.

**KSFO/Super Bowl 50** The FAA will not be imposing a slot-based special traffic management program for the game on 08FEB, but ramp reservations, made through specific FBOs, will be required for all arrivals and departures from 04-08FEB. The rule will apply to all airports in the region, including San Francisco International, Oakland International, Hayward Executive, Norman Y. Mineta San Jose International, Livermore Municipal, Buchanan Field, Napa County, Charles M. Schulz-Sonoma County, Monterey Regional, Watsonville Municipal and Salinas Municipal. NBAA has set up a Super Bowl 50 information page that includes links to the FAA arrival/departure routes.

**Uxxx/Tajikistan** The U.K.'s Foreign and Commonwealth Office (FCO) issued updated travel advice for Tajikistan that reads as follows: "In early September 2015, armed clashes involving security forces resulted in a number of deaths close to Dushanbe International Airport and in the Romit Valley not far from Dushanbe. While tensions have eased, security remains heightened. You should continue to take extra care, monitor the local media and check this advice regularly."

**KFZZ/Falcon Field, Arizona** In January and February, Runways 4R/22L and 4L/22R at Falcon Field Airport (FFZ) in Mesa, AZ will be closed non-concurrently for the taxiway ALPHA realignment construction project. These are hard closures with no potential for runway recall. Runway 4L/22R had closed Jan. 12, at 6 a.m. (1300Z) and will remain closed until Saturday, Jan. 30, 2016. Runway 4R/22L is expected to close Monday, Feb. 1, at 6 a.m. (1300Z) and remain closed until Sunday, Feb. 15.

**Kxxx/United States** A few weeks ago we reported on new FAA FDC NOTAMs that eliminate the need to obtain a TSA Waiver for domestic flights in the US. on 17JAN The FAA has corrected an error in these (in simple terms, they forgot to include some previously issued exceptions), and so there are 3 brand new NOTAMS effective – these are 6/4255, 6/4256 and 6/4260. Got some time? **Read the original NOTAMs in full.**

**Mxxx/Mexico** The U.S. Department of State warns U.S. citizens about the risk of traveling to certain places in Mexico due to threats to safety and security posed by organized criminal groups in the country. U.S. citizens have been the victims of violent crimes, such as homicide, kidnapping, carjacking, and robbery by organized criminal groups in various Mexican states. This Travel Warning replaces the Travel Warning for Mexico, issued May 5, 2015

**EISN/Shannon FIR** Due to a number of flights deviating from clearances prior to exiting Shanwick OCA, flight crews are reminded that Eastbound route clearances issued by Shannon Control for aircraft exiting Oceanic Airspace apply from AGORI, SUNOT, BILTO, PIKIL, ETARI, RESNO, VENER, DOGAL, NEBIN, MALOT, TOBOR, LIMRI, ADARA, DINIM, RODEL, SOMAX, KOGAD, BEDRA, OMOKO, TAMEL AND LASNO. Flights shall not turn before these points.

**Uxxx/Russia** The Russian Institute of Volcanology has issued a code orange alert after Russia's Zhupanovsky volcano began erupting earlier this week, sending clouds of ash and gas to 27,000 ft. A code orange advises pilots to avoid flying near the ash cloud, reportedly moving over the North Pacific Ocean driven by prevailing easterly winds.

**UIII/Irkutsk** has issued NOTAM A0134/16 closing RWY 12/30 weekly on Tuesdays from 1210-1450Z beginning Feb 02 and ending March 22. UIII is not available as an alternate during those times.

**UHSS/Yuzhno** is closed daily between 0330-0500Z due to preventative maintenance. No end date has been issued.

**RPHI/Manila FIR** has begun Phase 1-b of an ADS/CPDLC trail. The specific details of the plan can be found [here](#).

**Wxxx/Indonesia** As of 19JAN, Mount Egon has been erupting on Flores Island, which is located east of Bali Island. Egon emitted large amounts of ash and noxious gas. As of yet, the eruption has not caused any flight delays or cancellations; however, previous volcanic eruptions in the lesser Sunda Islands have caused extended delays in Denpasar and Mataram.

**Zxxx/China** Talks with the Zhuhai municipal government, Chinese government, Zhuhai Airport Authority and the Civil Aviation Authority China (CAAC) resulted in temporary International China Inspection and Quarantine (CIQ) services at Zhuhai Airport for non-scheduled business aviation movements. Following the approval late last month, China's National Port Administration Office opened a temporary customs port on January 1. The approval is renewable on a six-month basis. During the "approval period" from January 1 to June 30, crewmembers of foreign business aviation flights can enter and exit China via the temporary business aviation port at Zhuhai Airport.

View the full International Bulletin 27JAN2016

---

# Monday Briefing: Russian overflights of Ukraine now prohibited, EUR: TCAS 7.1 Compulsary

Cynthia Claros  
12 November, 2024

<b>INTERNATIONAL BULLETIN</b>	<b>ISSUED BY FLIGHT SERVICE BUREAU</b>
	SITA HNLFSXH AKLFSXH AFTN KMCOXAAL EMAIL INTL.DESK@FSBUREAU.ORG



**All Russian overflights of Ukraine now prohibited** 29NOV In a development of the dispute between Russia and Ukraine regarding traffic between the two countries, Ukraine has extended the original ban (which affected specific Russian Airline only) to all Russian registered Aircraft Operators. Notam 2604/15 issued last Wednesday has the specifics.

**EUR: TCAS 7.1 Compulsary** 01DEC The EASA Mandate for compulsory carriage of TCAS version 7.1 (with changes to "Adjust Vertical Speed" RA and resolution of "Reversal RA" problems) is 01DEC. All operators must have 7.1 on board. Note that this applies also to EU Territories abroad, eg. New Caledonia, Tahiti.

---

**OYSC/Sanaa** FIR We've received input from a number of US Airlines that although Yemeni landmass airspace is prohibited, operations through the OYSC/Sanaa FIR Oceanic portion are available in accordance with FDC5/5575.

**NZAA/Auckland** is closed every Monday morning 0130-0430LT for runway maintenance. However, Robin Leach at Air Centre One notes that several aircraft have departed for Auckland with an arrival time during this period resulting in airborne holding. Part of the issue is that a NOTAM is only issued if the work is cancelled; otherwise the (hard to spot) AIP/IFG notes for Auckland apply.

**ZBAA/Beijing** Chinese Authorities have issued an 'orange level' alert for smog on Sunday, with reports that visibility in places is down to a few hundred feet. This alert requires industrial plants to reduce or shut down production. With the current temperatures, Freezing Fog is affecting operations at Beijing Airports.

**North Atlantic** First day with the new NAT Tracks structure will be 01DEC per advice from NATS and Nav Canada, reporting that previous IT issues with the new tracks have been resolved.

**Spain** The National AFTN COM Centre is out of action for a few hours on Monday night (after 2100Z), meaning that FPL filing and other AFTN based messaging will be affected for Airports in Spain and the Canary Islands.

**Bermuda** Transatlantic Operators should note in addition to the new track structure on 01DEC, that Bermuda will be without radar coverage for the afternoon (1200Z-1600Z), and the National Authority there is recommending to avoid Bermuda airspace. A limited non-radar service will be provided, and only airways L459, 461, and 462 are useable if you do overfly. Refer to KZWY A0461/15 for more.

**EINN/Shannon** is again closed for maintenance this Monday night 01DEC, 2145Z-0500Z; use alternate diversion alternates!

**EGLL/London Heathrow** has a high risk of regulation for Mon, Nov 30th from 0540-2200Z due to strong winds. Please plan fuel accordingly for possible airborne delays.

**HLLL/Libya FIR** Due to the recent escalation of the Libyan Crisis all Italian aircraft operators have been prohibited from flying through HLLL FIR. Prior Permission to operate into HL available aerodromes also requires Prior Permission by the Libyan CAA. REF NOTAM A8382/15 which replaced A5637/15.

**LFRR/Brest FIR** Training and stepped implementation of the ERATO paperless strip system in Brest FIR commenced on 24NOV and will last until 18DEC with significant capacity reductions. A transition period with capacity reductions will follow from 19DEC; this may potentially extend into Summer 2016. Moderate and (in some case) high delays may be expected daily, depending on the sector configuration provided.

**LTxx/Turkey** In response to the downing of a Russian Fighter Jet, Russia will be suspending the Visa-Free Travel program between the countries effective 01JAN2016.

**VICG/Changigarh** The new Chandigarh international airport which was originally scheduled to close for runway resurfacing which was estimated to take approx a year will in fact now remain open during the construction. Work to resurface the runway will take place without disturbing the flight operations there.

**EIDW/Dublin** The DAA and IAA are currently exploring a further reduction in SID separation to 75 seconds (following aircraft given take-off clearance when preceding aircraft reaches 1NM past DER). Ongoing AIM is to reduce further to 60 seconds if possible.

**MKJS/Montego Bay** The operator of Sangster International Airport, MJB Airports Limited, Announced that, effective 24NOV, electronic boarding passes will be accepted as part of the security screening process.

**DNxx/Nigeria** The Nigerian Civil Aviation Authority, NCAA, suspended some oil marketers from supplying Jet A1 to airlines due to a lack of depot facilities. The affected marketing companies include Jushad Oil and Gas Limited, Lubcon Limited, Ascon Oil Company Limited, Acon Petroleum Limited and Star Orient Aviation Limited.

**FQNC/Nacala,Mozambique** Mozambique's airport management company AdM stated on 24 November 2015 that Nacala Airport is expected to receive the proper certification to service international flights by December 2015. International airlines can begin using the facility by March or April 2016. Nacala Airport was a former military airbase and it opened as a civilian facility in December 2014. However, to date, the airport has only been permitted to service domestic flights.

**View the full International Operations Bulletin for 30NOV2015**

---

# Monday Briefing: Thanksgiving ATC Traffic Plan, New Missiles Warning - Baghdad FIR

Cynthia Claros  
12 November, 2024

INTERNATIONAL BULLETIN	ISSUED BY FLIGHT SERVICE BUREAU
	SITA HNLFSXH AKLFSXH AFTN KMCOXAAL EMAIL INTL.DESK@FSBUREAU.ORG



**Thanksgiving ATC Traffic Plan** 23NOV The FAA have published details of Traffic Management plans for the east coast of the US during the Thanksgiving holidays, effective 24NOV to 30NOV. The highest volume days will be 25NOV and 29NOV, expect delays on north/south routes to Florida during this period. Read the full details of the airspace initiatives [here](#).

**New Missiles Warning - Baghdad FIR** 23NOV A NOTAM issued today by the Iraqi CAA indicated anticipated cruise missile traffic across the FIR from the Caspian Sea, leading also to the closure of Erbil Airport until Wednesday. See below for further.

---

**EGGX/CZQX Shanwick/Gander** The new NAT Track Structure and Reduced Lateral Separation Minima procedures, initially planned for 12NOV, are now re-planned for Monday 30NOV, following the resolution of computer issues related to the new format.

**UIII/Irkustk** will close the main runway on 01, 08, 15 and 22DEC from 1210-1450Z for repairs, not available as alternate during these times. As this is a common Polar alternate, check NOTAMS for current information.

**UEEE/Yakutsk** will close 31DEC-02JAN, not available for movements or as alternate after 0500Z on 31DEC.

**EINN/Shannon** has a runway closure on 23NOV from 2345Z-0500Z, not available as alternate. Caution



before using as NAT alternate on this date. If another ETOPS alternate is required, consider EIDW/Dublin, EGAA/Belfast or EGPf/Glasgow.

**ORBB/Baghdad FIR** Iraq published the following NOTAM (A0413/15) effective today 23NOV CRUISE MISSILES CROSSING NORTHERN PART OF IRAQ, FROM CASPIAN SEA TO SYRIA, NORTH OF REP OTALO, NO CRUISE MISSILE OPS IN THE REST OF ORBB FIR, FLIGHTS OPERATING AT FL310 OR ABOVE AND FLIGHTS OPERATING AT ORBI, ORNI AND ORMM NOT AFFECTED. SFC - 30000FT MSL, 23NOV 0500Z - 25NOV 0500Z. In addition Erbil and Sulamaini airports will be closed until Wednesday.

**OLBA/Beirut FIR** Initially issued a NOTAM on 20NOV, closing a large part of the FIR including routes G2/UG2, R219/UR219, L620/UL620, in response to Russia's request for a training exercise in their airspace. Subsequently the government reversed their decision, and the NOTAM was cancelled on 22NOV, reference A0293/15.

**BKPR/Kosovo** Airspace to the north of Kosovo was released from UN/KFOR restriction, to Serbian control, on 20NOV, meaning that arrivals and departures from Europe will no longer have to make a circuitous approach and can depart to the north. Procedures are not yet in place, but technically the airspace is no longer restricted. For most operators this will see a route saving of up to 100nm.

**GABS/Bamako, Mali.** With great sadness we must report that 6 crew members of Volga-Dnepr Airlines were amongst those killed in the attack on the Radisson Hotel in Bamako on Friday.

**KXXX/USA** Thanksgiving Holidays 26NOV and 27NOV leading to increased traffic flows across US, but anticipated reduced traffic across the NAT region.

**KXXX/USA** Runway Closures DTW-RWY 4L/22R CLOSED SEA-RWY 16C/34C CLOSED LAS-RWY 7L/25R CLOSED LAX-RWY 6R/24L CLOSED 23/1430

**FJDG/Diego Garcia** Parking Stands A6-11 and B4-8, as well as some taxiways, closed for repair effected 19NOV.

**NWWW/Noumea** continues with runway closures 23-26NOV affecting the main runway.

**FABL/Bloemfontein**, South Africa will not accept widebody diversions 19-26NOV.

**GCCC/Canarias FIR** will have a HF outage today 23NOV from 0900-1500Z. In case of non-contact, use CPDLC, or HF via Santa Maria or Sal for relay.

**LIXX/Italy** ATC Strike planned for 24NOV 1200-1600Z has been postponed, refer NOTAM A8227/2015.

**HLLL/Tripoli FIR** Additional new southbound route available via RASNO UY751 LOSUL, for those operators using the airspace.

**LFEE/Rheims** ATC Strike 23NOV/0500Z - 28NOV/0500Z Confirmed for Monday only at this time - NOTAM F2093/15 refers. AOs are advised to reroute, avoiding LFEE area of responsibility. Those that are not able to reroute may expect delay.

**RJJJ/Japan FIR** will have a comms outage affecting Flight Plan filing on 25NOV, from 1410-1720Z. To avoid delays and missing plans, Flight Plans should be filed earlier than normal to RJJJZQZX for overflights and landings. Refer to J7545/15 for specifics.

**SPJC/Lima, Peru** Effective 12NOV the Location Indicator for the main airport in Lima, Jorge Chavez, changes from SPIM to SPJC.

**TTZP/Piarco ATC** has issued a request for operators to include KNYCZZZX when filing plans entering New York Oceanic airspace from the Piarco FIR, or operating east of 58W within the Piarco FIR, in order that

New York has details of the aircraft.

With regard to business aviation, but equally interesting for airlines and private operators, the NBAA has published a useful list of the Top10 Issues for International Operators in 2016.

**View the full International Operations Bulletin for 23NOV2015**

---

## Monday Briefing: NAT Tracks Change Postponed, KLAS/Las Vegas restrictions

Cynthia Claros  
12 November, 2024

<b>INTERNATIONAL BULLETIN</b>	<b>ISSUED BY FLIGHT SERVICE BUREAU</b>
	SITA HNLFSXH AKLFSXH AFTN KMCOXAAL EMAIL INTL.DESK@FSBUREAU.ORG



**NAT Tracks Change Postponed 16NOV** The planned implementation of reduced separation in the Organised Track System (OTS) has been postponed. During final testing, a software issued was identified by ATC, and as a result the previous track structure remains unchanged. New waypoints introduced on 12NOV are useable. A revised implementation date is expected to be announced today, 16NOV.

**KLAS/Las Vegas restrictions 17NOV** Increased traffic from Monday 16NOV due NBAA Conference. Special Procedures in effect from 14NOV-23NOV affecting KLAS, KHND, and KVG, refer to this NBAA link for details. If you are visiting the NBAA Conference, you can meet the Flight Service Bureau team at stand C12050 in the Central Hall, and collect your free show pack.

---

**KAUS/Austin** A technical problem with ATC equipment in the Austin Tracon will likely lead to delays today; service is being provided by Houston Centre instead, with a Ground Delay Program planned to manage capacity.

**KLAS/Las Vegas** Increased traffic from Monday 16NOV due NBAA Conference. Special Procedures in effect from 14NOV-23NOV affecting KLAS, KHND, and KVG. Refer to <https://www.nbaa.org/events/bace/2015/air-traffic/>. If you are visiting the NBAA Conference, you can meet the Flight Service Bureau team at stand C12050 in the Central Hall, and collect your show pack (you can reserve one [here](#)).

**KXXX/USA** Several incidents reported of laser beams pointed at aircraft, on 13NOV Southwest and American were targeted at KPHX/Phoenix, and on 11NOV three aircraft at KDAL/Dallas Love were illuminated.

**KXXX/USA** Runway Closures BWI-RWY 10/28 CLOSED SEA-RWY 16C/34C CLOSED LAS-RWY 7L/25R CLOSED

**KXXX/USA Snowbird 2015:** The FAA have published details of Traffic Management plans for the east coast of the US during the Thanksgiving holidays, effective 24NOV to 30NOV. The highest volume days will be 25NOV and 29NOV, expect delays on north/south routes to Florida during this period. Read the full details of the airspace initiatives [here](#).

**EINN/Shannon** Has an overnight runway closure. from 17NOV-20NOV 2300-0500Z for essential maintenance. If another ETOPS alternate is required on these nights consider EIDW/Dublin, EGAA/Belfast or EGPF/Glasgow.

**LFFF/France** A Notam issued Friday (A4850/15) regarding Border Controls remains in place, in practice the Notam is a reminder to airlines of existing requirements only. Expect delays due security checks at all French Airports, and many closures of public buildings and transport systems in France.

**VLVT/Vientiane, Laos** has reopened after a runway closure on 13NOV due to a disabled aircraft. An MA60 had aquaplaned and partially blocked the runway.

**MNXX/Nicaragua** closed its border with Costa Rica on Sunday 15NOV in response to the wave of Cuban migrants moving northward to the United States. Costa Rican officials had previously issued transit visas to approximately 1,200 detained Cuban refugees at the Panamanian border. One Cuban migrant stated that there were approximately 2,000 Cubans waiting on the Costa Rican side of the Nicaraguan border.

**NFFN/Nadi, Fiji** Refurbished departure lounge opens today 16NOV; the government will spend another 105 million USD to upgrade the Airport further in the coming year.

**PAZA/Anchorage FIR** Two new waypoints have been added for Polar operations. Those waypoints are LETUN and BAREK.

**LFxx/France** ATC Industrial action planned for 17NOV has been cancelled.

**Llxx/Italy FIR** There has been a call for an Italian National Strike, including ENAV ATC personnel, on 24NOV 1200-1600 UTC. More information will be posted as soon as it is available.

**PLCH/Christmas Island** As per NOTAM A1581/15 Jet A-1 fuel limited in supply. Sched flights to minimize fuel uplift on arrival or maximize tankering into PLCH. Tech stops cannot be made. In effect until 04DEC.

**PKMJ/Marshall Island** Construction is planned at the eastern end of RWY25; authorities have notified expected delays of up to 30mins including airborne holding.

**FMEE/Reunion** Airport will be closed from 16NOV-28NOV on Mon, Weds, Fri for surface work. Airfield cannot be used as an alternate except in case of emergency. All traffic services will be provided normally for all aircraft crossing La Reunion TMA. Refer to NOTAM A1452/15.

**FAA** The FAA is rolling out Controller Pilot Data Link Communications-Departure Clearance (CPDLC-DCL).

Currently, only George Bush Intercontinental Airport in Houston, TX (IAH), William P. Hobby Airport in Houston, TX (HOU) and Salt Lake City International Airport in Utah (SLC) are operational, however, the FAA plans to bring 56 airports online by the end of 2016. KTEB/Teterboro is scheduled to be operational by the end of MAR2016.

**View the full International Operations Bulletin for 16NOV2015**

---

# Monday Briefing: North Atlantic OTS Changes, Indonesia Volcano Eruption

Declan Selleck  
12 November, 2024

**INTERNATIONAL  
BULLETIN**

**ISSUED BY FLIGHT SERVICE BUREAU**

SITA HNLFSXH AKLFSXH AFTN KMCXAAL

EMAIL INTL.DESK@FSBUREAU.ORG



**North Atlantic OTS Changes this week 09NOV** This Wednesday (12NOV) sees the implementation of the new NAT Track OTS, marking the first change to the lateral structure since the tracks were introduced in 1965. New requirements include RNP4, and 24 new Oceanic Entry Points come into effect. See below for further.

**Indonesia Volcano Eruption 09NOV** Operations into WADD/ Denpasar, Bali continue to be disrupted due to ongoing eruption of Mt. Rinjani on Lombok Island. Also affected are nearby WARB/Blimbingsari and WADL/Lombok.

---

**EINN/Shannon FIR** CPDLC service is withdrawn on the evening prior to implementation of the new NAT Track system, voice service only from 1715Z onwards on 11NOV.

**LGGG/Athens FIR** Strike of Greek Radio Operators (thereby including AFTN messaging, and AFIS)

announced this morning for 12NOV. Overflights will not be affected. Full details here.

**HESH/Sharm el-Sheikh** remains open but subject to multiple advice notices from international Authorities. Many airlines have cancelled operations into the airport after increasing suspicions that a bomb was loaded here onto the A320 which crashed into the Sinai Desert.

**HLLL/Tripoli FIR** Libya has issued updated advice regarding airport availability – HLLQ, HLTQ and HLZW are only available for international arrivals, daylight hours only. PPR and Permit is required prior operations.

**SCFZ/Antofagasta ACC, Chile.** Crews on Airways UL780 and UL302 are requested to inform ATC of any speed changes greater than .02 Mach; if unable on VHF, use HF 10024. The procedure is to ensure separation between succeeding aircraft operating on CI speeds.

**SBXX/Brazil** The Brazilian Grand Prix takes place 13-15NOV making Sao Paulo operations at SBSP/Congonhas, SBGR/Guarulhos, and SBKP/Campinas busier than usual.

**RPLL/Manila, Philippines** APEC 2015 Summit being held 17-20NOV. Check restrictions, many commercial flights have been suspended during this period. Parking at a premium. Consider quieter alternates such as RPLC/Clark.

**YXXX/Australia** Australian Border Force strike commencing midnight 09NOV across Australian airports. As a result, departure and arrival processing at Australian airports may take longer than usual.

**WADD/Denpasar, Indonesia** Operations here continue to be disrupted due to ongoing eruption of Mt. Rinjani. Also affected are nearby WARB/Blimbingsari and WADL/Lombok. For updates monitor [http://www.bom.gov.au/products/Volc\\_ash\\_recent.shtml](http://www.bom.gov.au/products/Volc_ash_recent.shtml)

**LIXX/Italy** Possible ATC strike on 14NOV 1200-1600Z announced.

**KXXX/US** Airport Runway closures: BWI-RWY 10/28 CLOSED SEA-RWY 16C/34C CLOSED LAS-RWY 7L/25R CLOSED

**KLAS/Las Vegas** NBAA 2015 will take place 17-19NOV limiting airport capacity.

**HECC/Cairo FIR, Egypt** Point PASOS (LCCC FIR) is again available in both directions for flight planning. Please be aware flights departing OLBA via LCCC must file via VELOX-PASOS. Also see HECC NOTAM 1A277/15 and 1A278/15 for flight planning guidance.

**VHHH/Hong Kong** Arrival and Departure delays up to 30 minutes can be expected due to a flight check and maintenance on RWY 07L/25R on 09NOV 0530-0100 and 10NOV 2300-0100.

**Caribbean** Tropical Weather Advisory Shower and thunderstorm activity is showing signs of organization in association with a low pressure system located just north of the Turks and Caicos and the southeastern Bahamas. A tropical depression or a tropical storm is likely to form on Monday while the low moves west-northwestward to north-northwestward near or over the central and northwestern Bahamas. For further details see National Hurricane Center

**KLAX/Los Angeles** Due to military operations of the coast of LAX there is a risk of arrival delays and reroutes during the overnight periods until Nov 12th.

**MWCR/Grand Cayman** may be forced to shorten the runway at Owen Roberts International Airport (MCWR/GCM). The runway, which was extended to accommodate long-haul flights, may have to be shortened in order to accommodate a 400 ft/124 m safety area. An extension of the runway cannot be further extended, and the airport authority is examining all options.



**CYYQ/Churchill** has amended opening hours 1200-2200Z M-F.

**PKWA/Bucholz** has revised ATC hours from 01NOV, 0800-1230 and 1330-1600LT.

**NWWW/Tontouta** has a main runway closure 09-12NOV at various times, some daytime. Check NOTAM 1543/15.

**EGPF/Glasgow** is closed overnight 22NOV-11DEC for runway and taxiway repairs.

**DRRR/Niamey** Ouagadougou ACC is now operational H24 again; the previously implemented contingency plan for traffic operating outside ATC service hours is withdrawn.

**View the full International Operations Bulletin for 09NOV2015.**