

# Scottish Airport Top Trumps

OPSGROUP Team  
26 November, 2021



Thinking about heading to Scotland for some whisky, golf or a plate of haggis? Here's a little 'Top Trumps' guide to three of the airports you might be thinking of operating into.

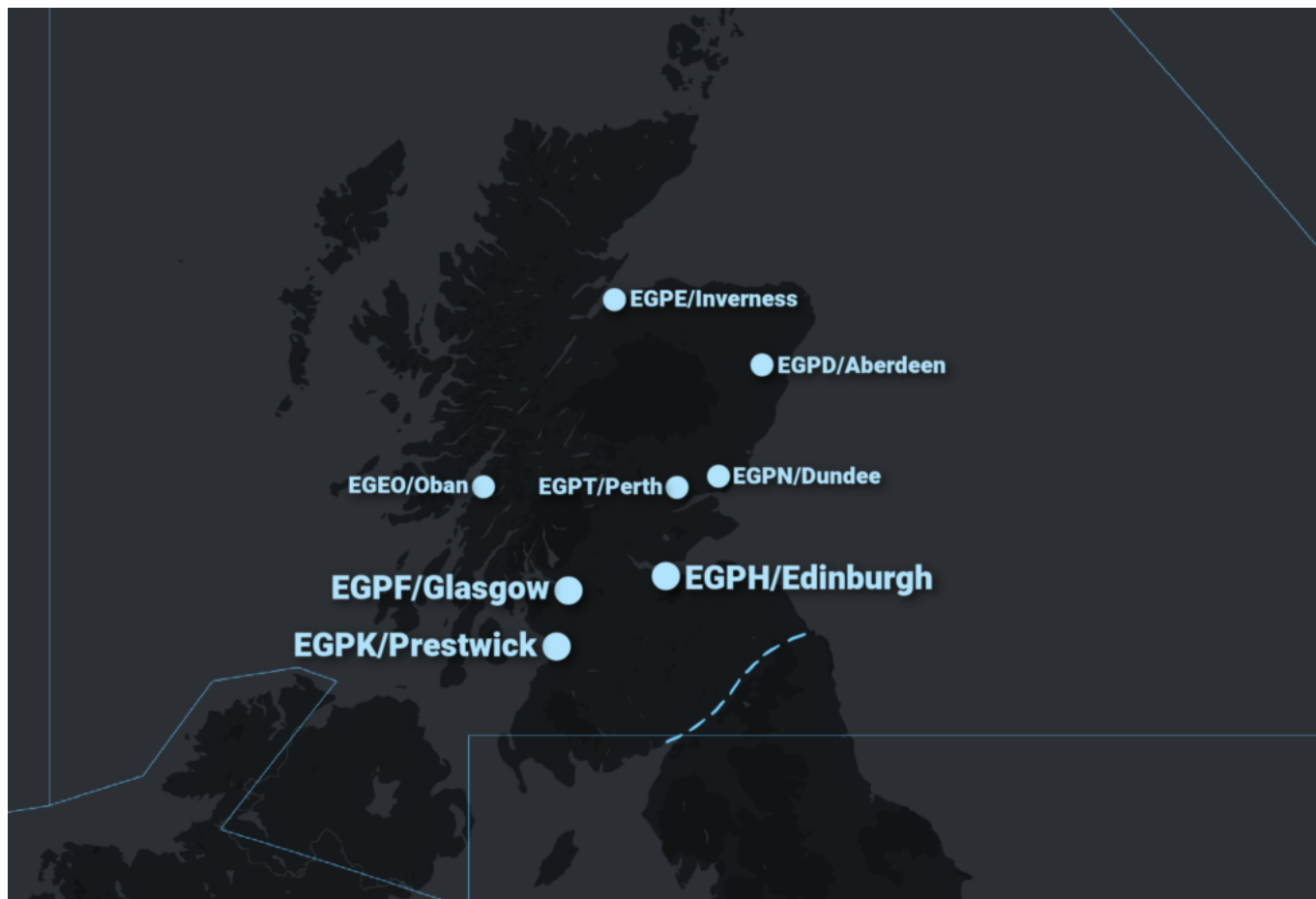
(If you want to visit Trump International golf course in Scotland then that'd be EGPD/Aberdeen you're after).

## Scotland at a glance.

Scotland offers several international airport options. We already mentioned **EGPD/Aberdeen** which is northeast. Even further north you have **EGPE/Inverness** up in the Highlands. The HIAL (Highlands and Islands) Airport Group look after eleven airports up in the north region.

**EGPN/Dundee** and **EGPT/Perth** are your central easterly choices, with **EGEO/Oban** to the west (and a couple out in the islands).

Your top three which lie closer to the border with England however are **EGPF/Glasgow**, **EGPK/Glasgow Prestwick** and **EGPH/Edinburgh**. So we thought we'd take a look at those.



### Who controls you?

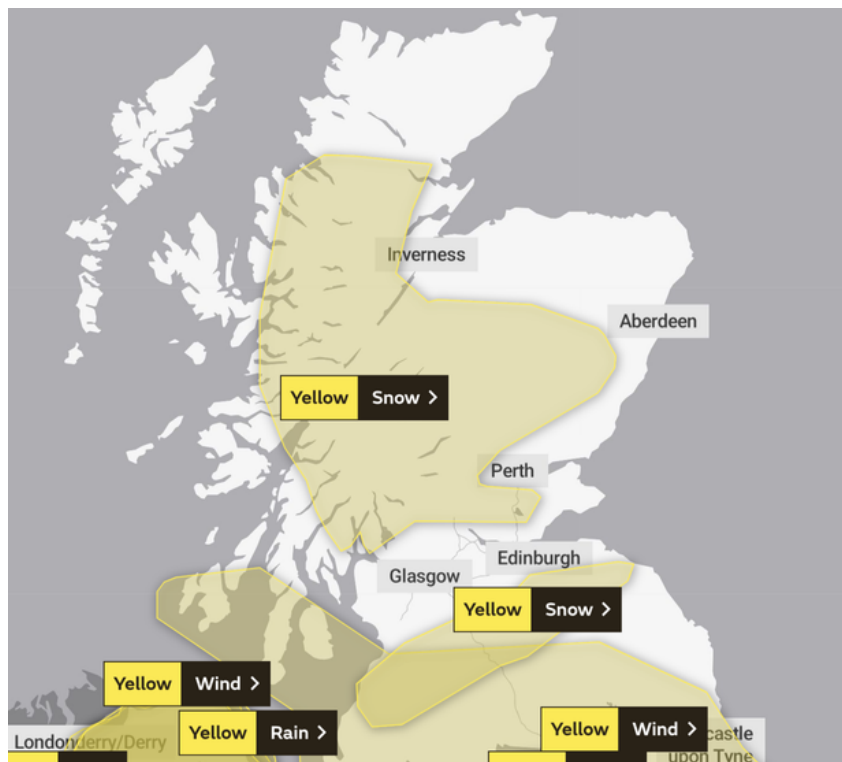
Scotland is part of the United Kingdom. Like the rest of the UK they use Great British Pounds (GBP), and aviation is **controlled by the UK CAA**.

**NATS provide the ATC services** through their Prestwick Centre. You'll probably find yourself speaking to Manchester Area Control (MACC) if you fly through England, before handing over to Scottish (ScACC) and potentially Oceanic (OACC) who control the eastern half of the NAT from 45 degrees north (Azores) to 61 degrees north (the boundary to Iceland).

You generally don't need permits to overfly and land, unless you are a commercial flight wanting to land. That said, some airports do have **slot requirements** and to head into the UK you do need to **fill out a General Aviation Report**, and ensure customs have a copy at least a day in advance. If you're a commercial operator, give it two days and if it's for a series of flights then five will keep you organised.

Head here for info on this, or email [foreigncarrierpermits@caa.co.uk](mailto:foreigncarrierpermits@caa.co.uk) for help with permits

### What's the weather looking like?



Warning about yellow snow are common across the UK in winter...

We've given this its own section because **the weather in Scotland can be challenging**. Along the southern region it is milder but you are still going to be faced with some serious snow and winter ops conditions from time to time.

Back in 2017, **major snow storms** resulted in the closure of Scottish airports, and many a day of disruption. It happened again in 2018, and in fact does pretty much every year. Fast forward to now (2021) and a town in Aberdeenshire just recorded **the coldest temperature seen in the UK in 26 years** (minus 23°C, or -9.4°F for our American continent friends).

So Scotland gets cold and snowy. This means you need to think about your cold weather ops, in particular:

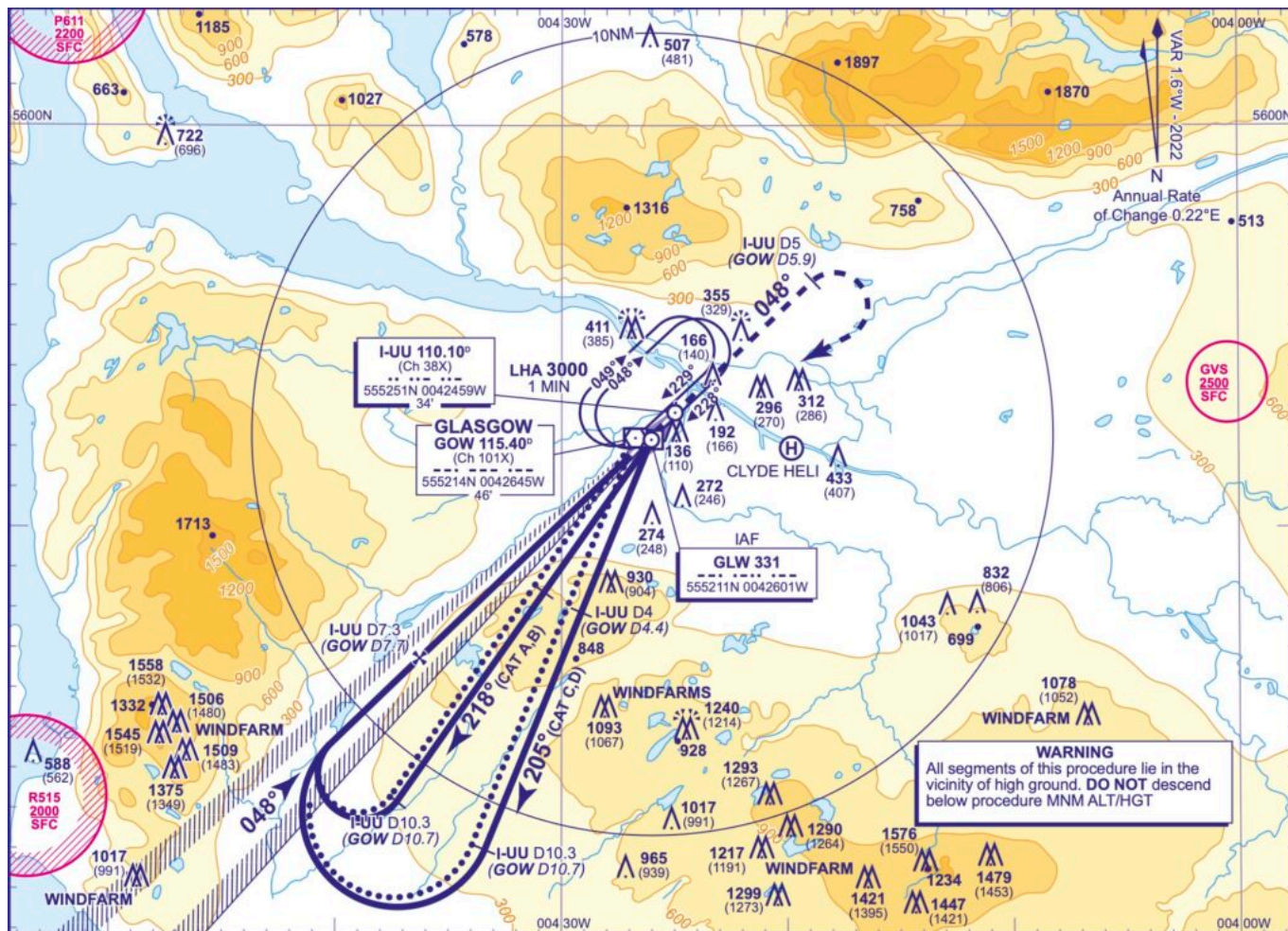
- Cold temperature altitude corrections
- De-icing/Anti-icing procedures
- Contaminated runway performance

### Thinking of Glasgowing to the capital?

Then you probably want to fly to Edinburgh. Despite being the biggest city, Glasgow is not actually the capital of Scotland. It does however boast a nice airport for you to use.

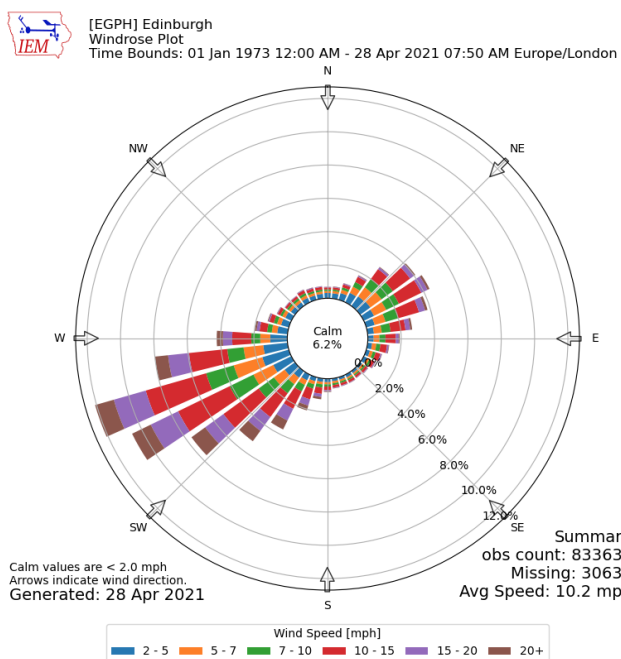
**EGPF/Glasgow** – the runway **05/23 is relatively short at just 8743 feet** (2665 meters) and you have a displaced threshold to think about as well. That said, the Airbus 380 can get in here so it isn't that small, and both directions offer **CAT III capability**.

**Biggest threat:** Some terrain and a busy missed approach because of it.



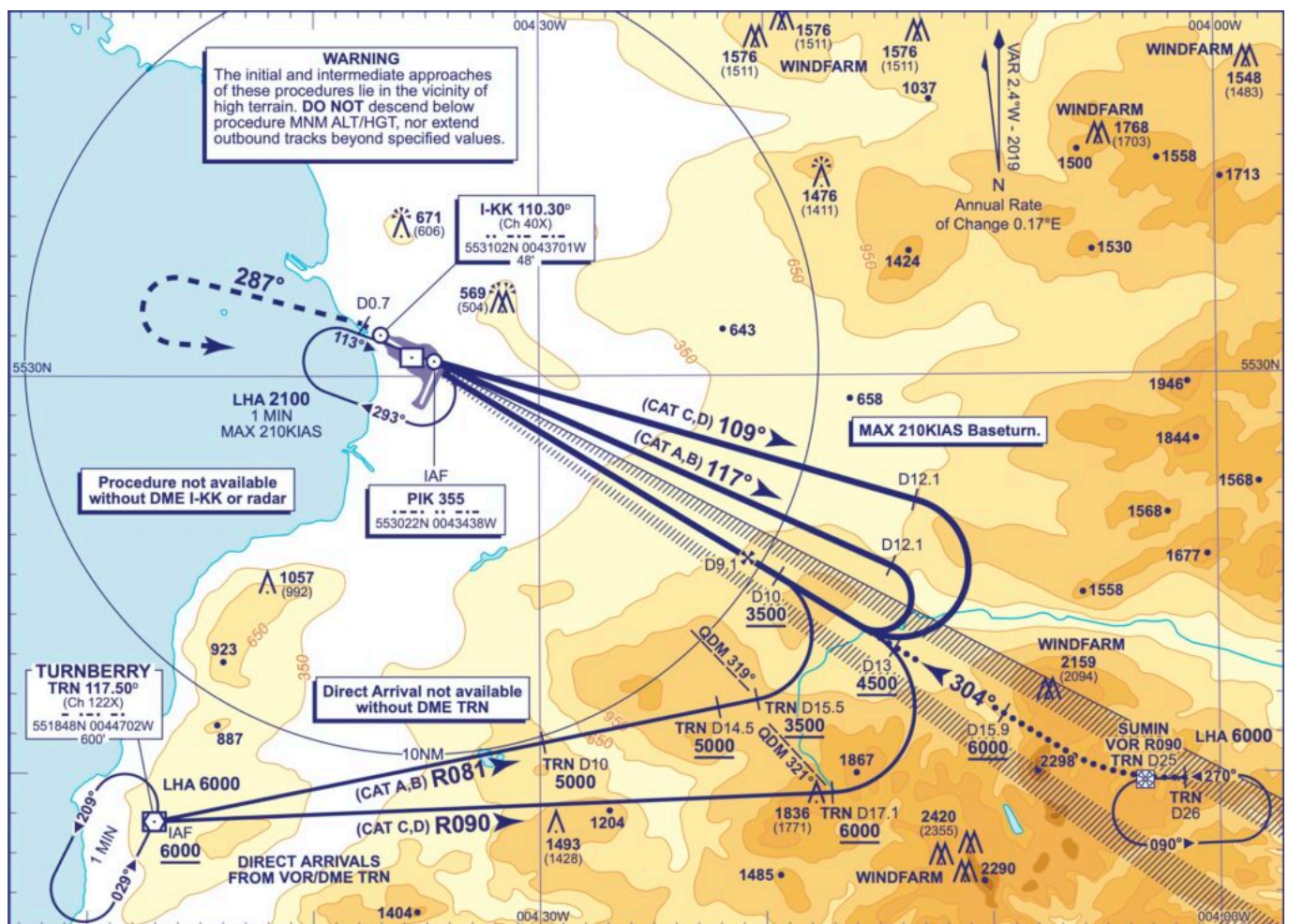
Many obstacles and a busy chart.

Edin-brrrrrr



1973 - 2021 Wind Rose.





Terrain and a 3.5° path.

A Top Trump summary for you

EGPF/GLASGOW		EGPK/PRESTWICK		EGPH/EDINBURGH	
RUNWAY	05/23	RUNWAY	12/30 03/21	RUNWAY	06/24
LENGTH	8743 FT 2665 M	LENGTH	9800 FT 2987 M 6253 FT 1906 M	LENGTH	8386 FT 2556 M
APPROACH	ILS CAT III	APPROACH	ILS CAT I	APPROACH	ILS CAT III
RFF	9	RFF	7	RFF	9
THREAT	5/10 TERRAIN / BUSY MAPP	THREAT	7/10 TERRAIN / 3.5° GS	THREAT	6/10 COLD WX / WINTER OPS

Start your Scottish Airport Top Trumps set here!

Airport Lowdowns

We've made an Airport Lowdown for all three airports. If you are an OPSGROUP member then you can find them by clicking each of these thumbnails.

The Lowdown on: EGPF/GLASGOW		The Lowdown on: EGPB/EDINBURGH	
THE BASICS	<b>HOURS:</b> 24/7 <b>TIMEZONE:</b> UTC <b>PERMITS/SLOTS:</b> YES <b>RUNWAYS:</b> 05/23 8743FT / 2665m AOM ILS CAT III <b>FACILITIES:</b> MINOR MAINTENANCE / HANDLING / FUEL / CUSTOMS	THE BASICS	<b>HOURS:</b> 24/7 <b>TIMEZONE:</b> UTC <b>PERMITS/SLOTS:</b> YES <b>RUNWAYS:</b> 06/24 8386FT / 2556m AOM ILS CAT III <b>FACILITIES:</b> MINOR MAINTENANCE / HANDLING / FUEL / CUSTOMS
	<b>THE BIG</b> SOME TERRAIN BUSY MAPP DISPLACED THRESHOLD WINDSHEAR		<b>THE BIG</b> MAPP LOW LEVEL OFF ALTITUDE TURN WINDSHEAR COMMON WHEN STRONG S/W WINDS CHALLENGING WINTER WEATHER CONDITIONS
THE OPS	<b>APPROACH:</b> WINDSHEAR AND TURBULENCE DUE TO LOCAL TOPOGRAPHY <b>TERRAIN:</b> CAN RESULT IN GPSW WARNINGS. CONSIDER SPEED CONTROL	THE OPS	<b>ARRIVAL:</b> EXPECT TRACK SHORTENING. DESCENT PLANNING. ALTITUDES PUBLISHED <b>AIRSPACE:</b> RESTRICTED AREAS NEARBY. CLOSE TO BOUNDARY OF CONTROLLED AIRSPACE (MAY LEAVE RADAR CONTROL IF DETOURING DUE TO WEATHER) <b>GRADIENTS:</b> HIGHER THAN STANDARD
THE ALTERNATES	<b>EGPK/PRESTWICK</b> HOM 03/21 9800/2987m ILS CAT I RMP / NDB <b>EGPH/EDINBURGH</b> HOM 06/24 8386/2556m ILS CAT III	THE ALTERNATES	<b>EGPK/PRESTWICK</b> HOM 03/21 9800/2987m ILS CAT I RMP / NDB <b>EGPF/GLASGOW</b> HOM 05/23 8743/2665m ILS CAT III
	<b>EGPND/ROBEY</b> HOM 06/27 4952/1495m ILS CAT I (RWS) / RMP		<b>EGPND/ROBEY</b> HOM 06/27 4952/1495m ILS CAT I (RWS) / RMP
THE ENVIRONMENT	<b>PRECIPITATION:</b> RAIN, SNOW, WINTER CONDITIONS <b>WIND:</b> FOG/HAZE COMMON. GENERALLY CLOUDY <b>WIND:</b> OFTEN WESTERLY BUT VARIABLE. AVG 15 KTS <b>TEMPS:</b> HIGHS OF 30°C / LOWS OF -10°C	THE ENVIRONMENT	<b>PRECIPITATION:</b> RAIN, SNOW, WINTER CONDITIONS <b>WIND:</b> FOG/HAZE COMMON. GENERALLY CLOUDY <b>WIND:</b> OFTEN WESTERLY BUT VARIABLE. AVG 15-24 KTS <b>TEMPS:</b> HIGHS OF 10°C / LOWS OF -2°C
THE CONTACTS	<b>ATIS:</b> 129 575 <b>AIRPORT (AFT):</b> +44 181 887 9111 (GEN) +44 181 481 5555 <b>HANDLING:</b> SIGNATURE +44 14 1887 8348 / gndsignature@flightcafe.co.uk MENDIES +44 14 1887 8985 / gndmendes@flightcafe.co.uk GARRA +44 14 1887 8101 / gndgarrar@flightcafe.co.uk	THE CONTACTS	<b>ATIS:</b> 121 255 <b>AIRPORT (AFT):</b> +44 131 344 3333 (ADMIN) +44 131 333 8206 <b>HANDLING:</b> SIGNATURE +44 131 333 7447 / gndsignature@flightcafe.co.uk MENDIES +44 131 333 7447 / gndmendes@flightcafe.co.uk FLIGHTNORM +44 1275 668 5001 / gndflightnorm@flightcafe.co.uk
THE OTHER	<b>PCN:</b> 05/R/06/T <b>HAZ:</b> PROCEDURES IN PLACE INCLUDING DEF. ARR SPEEDS AND CDA	THE OTHER	<b>PCN:</b> 05/R/06/T <b>HAZ:</b> PROCEDURES IN PLACE INCLUDING DEF. ARR SPEEDS AND CDA <b>WINTER:</b> CONFIRM AVAILABILITY OF ANTI-AND DE-ICING FLUID

The Lowdown on: <b>EGPK/PRESTWICK</b> <small>Prestwick SCOTLAND, U.K.</small>			
THE BASICS	HOURS: 14248	TIMEZONE: UTC	PERMITS/SLOTS: YES
	SUNWAVE: 12130 03:21	WEOPT / 2867 x 45M 625.977 / 7605M x 45M	S.S. CAT 1 RWP / NDB
	FACILITIES: MINOR MAINTENANCE / HANDLING / FUEL / CUSTOMS		
THE BIG	LOW PLATFORM ALTITUDE TERRAIN: UNDER AIRSTRIP FOR RMY 30 3.5° G/S PATH FOR RMY 30		
THE OPS	TERRAIN: CAUTION ON ARRIVAL, APPROACH AND HOLDING/PROCEDURAL APPROACH APPROACH: IF HIGH ABOVE GLEDE, FULL SCALE PFDOWN INDICATORS MAY NOT BE MAINTAINED GIVING FALSE IMPRESSION OF DEVIATION AROUND		
THE ALTERNATES	EGPP/GLASGOW NDB	19121	8747/2865m S.S. CAT 1
	EGPP/EDINBURGH NDB	19121	888/2756m S.S. CAT 1
	EGPP/DUNDEE NDB	19121	466/1600m S.S. CAT 1 (RWS) / RWP
THE ENVIRONMENT	PRECIPITATION: RAIN, SNOW, WINTER CONDITIONS WMO: FOG/HAZE COMMON, GENERALLY CLOUDY WIND: VERY VARIABLE, AVS 15-25 KTS TEMP: HIGHS OF 18°C / LOWS OF 2°C		
THE CONTACTS	AFIS: 12130 AIRPORT (OPS): +44 1292 51 1011 (NPS) +44 1292 51 1060 HANDLING: 12015 AV SERVICES: +44 1292 51 2167 / <a href="mailto:info@prestonwick.co.uk">info@prestonwick.co.uk</a>		
THE OTHER	PCN: 50/5/C/B RWP: CAT 1 AIRPORT: DO NOT CONFUSE EGPP/GLASGOW PRESTWICK WITH EGPP/GLASGOW		



Airport Spy

Go

## Teterboro, USA

★ ★ ★ ★ ★ Rated 3.5 from 3 reviews

INTL

KTEB

Medium International Airport | Longest Rwy: **2,134 m / 7,000 ft** (01/19) | Elev: 9

Top 10

Reviews **3**

Alerts **45**

Articles **23**

Docs & Data



Docs for Teterboro

Airport Briefing : [KTEB Lowdown](#)

Airport Briefing : [Teterboro Flight Crew Handbook](#)

Docs for USA

Operating tips : [FAA Pacific Resource Guide Q4 2019](#)

*These Airport Lowdowns are the briefings we've started to put together on specific airports – the useful, practical, operational stuff. The threats, risks and gotchas that you discover with experience.*

*There are a bunch more available for other airports via Airport Spy in your dashboard.*

### To download the PDF for each airport:

1. Head over to Airport Spy in your dashboard
2. Search for the airport you want
3. Click on the "Docs & Data" tab

# International Bulletin: Hong Kong pain in the ass, Haiti relief operations

Cynthia Claros  
26 November, 2021

<b>INTERNATIONAL BULLETIN</b>	<b>ISSUED BY FLIGHT SERVICE BUREAU</b>
	SITA HNLFSXH AKLFSXH AFTN KMCXAAL EMAIL INTL.DESK@FSBUREAU.ORG



**Hong Kong is a pain in the ass - it's official** 20OCT Authorities in Hong Kong confirmed yesterday that the airport is a giant pain, especially for non-scheduled operators. Lining up slots, parking, permits and handling is extremely difficult. End result: a mountain of frustration. Read the article.

**Haiti relief operations - and Airbus Flight 101** 20OCT After Hurricane Matthew last week, MTPP/Port-au-Prince (Toussaint Louverture) became a central focus in relief efforts for Haiti. **OpsGroup member Airbus** operated an amazing relief flight from Lyon. Read the article.

---

**VTZZ/Thailand** is in a period of mourning following the death of His Majesty, King Bhumibol on 13 October. This is a time of deep sorrow for Thai people – refrain from any behaviour that may be interpreted as festive, disrespectful or disorderly. Abide by local laws and respect Thai customs. There may be some disruption of commercial and public services during the mourning period, especially during the first 30 days (until 13 November). Tourist attractions are open with the exception of Wat Pra Kaew (Temple of the Emerald Buddha) and the Grand Palace in Bangkok. Expect traffic disruptions and heightened security around these areas as people pay their respects to the late King.

**EBBR/Brussels** All non-scheduled flights destined to EBBR are allowed only after special permission by Airport Authority before start of flight. Contact +32 2 7536900 or inspect@brusselsairport.be.

**DTZZ/Tunisia** extended the state of emergency on 18OCT, set to expire, by three months. The state of emergency went into effect following a series of terrorist attacks in 2015 and has been extended multiple times.

**ORBB/Baghdad FIR** Traffic entering from Baghdad FIR (ORBB) to Ankara FIR (LTAA) shall file their FPL as follows: NINVA-OTKEP-SRT at FL320 and above. NOTAM A4572/16 refers.



**Solomon Islands** There has been a confirmed outbreak of dengue fever in the capital city, Honiara; you should follow the advice of the local authorities and take steps to avoid being bitten by mosquitoes; you should take out comprehensive travel and medical insurance before travelling to the Solomon Islands

**TXKF/Bermuda** Due to maintenance, the Bermuda Radar system will be out of service on Friday. Recommended reroute to avoid airspace. New York Center overflight procedures will be in effect. Routes have been developed to provide limited non-radar service within the airspace. All departures from Bermuda will be held down at FL310.

**OJAI/Amman, Jordan** Runway 26L/08R will be closed for urgent pavement maintenance on these days in November: 01,08,15,22,29: from 0930-1330Z. The airport will not be available for either normal operations or emergency divers during the closure period.

**OEZZ/Saudi Arabia** From 8 to 10 October there were several missile attacks reported near the Saudi / Yemeni border and the southern Red Sea.

**ZZZZ/Worldwide** Regulatory and voluntary bans on Samsung Galaxy Note7 smartphones is spreading as airlines and airport authorities around the world are announcing bans or restricted usage on the device, which has been withdrawn by Samsung after some devices caught fire. Ban notices are being issued primarily through airline online check-in pages, as well as via public announcements in airport terminals and onboard aircraft. The US Department of Transportation (DOT) was first to issue a total ban on taking the device on board, as a passenger or as air cargo, when it gave an emergency order Oct. 15 with FAA. The devices are being banned because of fire concerns, and the fallout following an incident involving a smoking smartphone on board a Southwest Airlines aircraft in Louisville, Kentucky on Oct. 5.

**YZZZ/Australia** will not be implementing the changes in the ICAO PANS-ATM (Doc 4444), as they say they haven't had enough time to work on the safety case - ie. figuring out if these changes are dangerous in any way. In short, they won't be saying "Climb via SID" or "Climb via STAR", which are the new phraseologies.

**TTZP/Piarco** wins the award for most confusing AIC of the week, namely AIC03/16 issued on 13OCT. Titled "RVSM Implementation", it appears that Trinidad is finally implementing RVSM in their airspace. But wait, they did that in 2005. So what's new in this AIC? It's a mystery. Take a look and see if you can spot it.

**KLAX/Los Angeles** 3 out of the 4 runways at KLAX have now been renovated. Runway 6R/24L reopened on 16OCT after renovations. Improvements to the fourth and final runway, 07L/25R, will begin OCT22 and continue until June 2017. This last runway will be partially closed until January, and then closed completely to allow for more extensive work to be done

**FSIA/Seychelles** Runway will be closed on Thursday 20 and 27 Oct between 1815-0245z and Friday 21 and 28 Oct between 1900-0215z. Can be opened in cases of emergency.

**UHPP/Petropavlovsk** Eruption in progress at Klyuchevskoy volcano (N5603E16038) near UHPP. Ash cloud reported at 0720z on 17 Oct from ground level up to FL300.

**VVZZ/Vietnam** Typhoon Sarika is forecast to bring hazardous sea and weather conditions to parts of northern Vietnam from around 19 October 2016; heavy rainfall could lead to flooding and landslides

**KLAS/Las Vegas** Because of the next presidential debate that will be held in Las Vegas on October 19, 2016, intermittent road closures will affect access to McCarran International Airport (LAS) between 4 pm and 10 pm on that date. The recommended route to the airport from the east side of the valley is westbound Flamingo Road to southbound Paradise Road. The recommended route to the airport from the west side of the valley is eastbound Tropicana Avenue to southbound Paradise Road.

**OIIX/Tehran** FIR The minimum safe level on R462 between DENDA and METBI has been raised to FL140.

**KSFO/San Francisco** has a new ATC Tower operational since Sunday last, located between Terminals 1 and 2. Per the local report, it “offers controllers a 650-square-foot work area with unobstructed 235-degree views of the airport’s runways and taxiways”. Hopefully there’s not much going on in the other 125 degrees.

**OSZZ/Syria** Russia’s only aircraft carrier, Admiral Kuznetsov, is nearing the end of a work-up period outside the port of Murmansk before heading for the eastern Mediterranean, reportedly to begin air operations against targets in Syria.

**EGPK/Prestwick** will be closed from midnight to 0400Z on 21OCT, due to a planned ATC power outage. ATC reachable during outage at +447917 424603.

**RPZZ/Philippines** Typhoon Sarika recently passed through the island of Luzon as a category 4 storm. Transportation routes, power and telecommunications systems could be affected in some areas. Other services that may be affected in these areas include emergency and medical care, as well as water and food supplies. If travelling to affected areas, exercise caution, monitor local news and weather reports, and follow the advice of local authorities.

View full International Bulletin 20OCT2016

---

## Midweek Briefing 22JUN: Iceland ATC strike - end in sight, Israel FPL changes

Cynthia Claros  
26 November, 2021

<b>INTERNATIONAL BULLETIN</b>	<b>ISSUED BY FLIGHT SERVICE BUREAU</b>
	SITA HNLFSXH AKLFSXH AFTN KMCXAAL EMAIL INTL.DESK@FSBUREAU.ORG



**Iceland ATC strike - end in sight** 22JUN Operators on both sides of the Atlantic have been frustrated over the last 6 weeks with continual sporadic ATC Industrial action. And end may be in sight, but in the meantime keep a close eye on BIRK, BIKF and BIRD Notams. Read the article.

**FPL changes: Israel** 22JUN Current Flight Planning procedures for flights across Europe from Israel will

change in light of a new agreement signed between Israel and Eurocontrol. Read the article.

---

**LFZZ/France** ATC Strike Number 9 gets underway today until 24JUN at 0400Z, usual disruption and restrictions apply. Avoid France where possible. NOTAM F1171/16 refers.

**EGGX/Shanwick** is having an 80's party on the 28th of June at 1600Z. For engineering work, all the new technology is being taken offline for three hours, so no CPDLC, ADS-C or OCL. Instead we have Voice Reports, HF, Manual Clearance Requests (123.95 or 127.65), and so on; just like the good old days. When you hit 30W log on to Gander manually.

**UMZZ/Belarus** The Minsk FIR has updated its table of cruising levels and altitudes below Transition; view the AIC.

**Gambia** The UK FCO issued updated travel advice for The Gambia : "Demonstrations took place in April and May 2016 in Banjul. Demonstrations could occur at any time in any part of the country prior to presidential elections planned for 01DEC. You should be vigilant, avoid all demonstrations"

**LPZZ/Portugal** is joining the International ATC Strike Club and will begin with industrial action, for two hours daily on: June 30th, and July 8th,15th, 22nd and 29th.

**KCXO/Houston Regional** will be opening a new customs facility mid July. KCXO serves the Metro-Houston area and is 46 miles outside of town. The new CBP facility adds more choice to international operators over the already saturated Houston area airports.

**KZZZ/United States** The U.S. Navy has scrubbed the planned military GPS interference testing across the U.S. Southwest that was supposed to happen this month.

**LWSS/Skopje** is implementing Free Route Airspace in the Skopje ACC above FL245, effective 23JUN. FRA is available H24 with DCT limit unlimited. The ATS network above FL245 is withdrawn. Additional info is available in the Republic of Macedonia AIP AMD 58/16. New RAD measures can be found in the increment file and will become part of Annex 4 on AIRAC 1608.

**LWZZ/Macedonia** Late on 20JUN, tens of thousands of anti-government protesters gathered in central Skopje, Macedonia's capital, to conduct another demonstration. The protesters gathered outside the Special Prosecution building before then marching to the Ministry of Justice building, where they broke some of its windows and threw red paint at its exterior.

**EZZZ/Scandinavia** Another Free Route Airspace update is happening in the two Functional Airspace Blocks NEFAB and DK/SE FAB. NEFRA Phase 1 will be implemented as of AIRAC 1607 on 23JUN, to implement H24 cross border Free Route Airspace between DK-SE FAB and NEFAB, except Norway, above FL285. ATS routes will be kept. Norway plans to implement cross-border Free Route Airspace spring 2017.

**CYZZ/Canada** has introduced "No Drone Zones" around airports that includes fines for offenders caught operating drones in the restricted areas. They are also drafting new legislation to strengthen rules regarding drone operations.

**LEMD/Madrid** may have industrial action on 28JUN, the Apron controllers are making noises about a strike. Not confirmed.

**WAZZ/Indonesia FIR** Ujung Pandang FIR has a couple of radar outages from 19-27JUN. Reroutes or delays are not likely, but strong potential for lower than optimum Flight Levels.

**HECC/Cairo FIR** If for some reason you are operating flights to or from Libya, then **A:** You're probably not

reading this bulletin carefully enough, and **B:** Be aware that you are required to obtain PPR from Egypt via AFTN to HECAYNYX, at least 48 hours before the flight, in order to overfly Cairo FIR.

**EGAA/Belfast** ILS 25 out of service along with other ongoing runway and taxiway closures until 11AUG16. Please check EGAA NOTAM's for specific closures.

**EGLF/Farnborough** Temporary restricted airspace will be in effect for the annual Farnborough Airshow 16-17JUL. AIC M 033/2016.

**France** The French authorities have extended the document checks at their borders, these measures will apply to all airports in France and also to Basel airport. Especially during the period of the European Football Championships, passengers travelling to/ from French airports are asked to ensure they have a valid identity document (passport or identity card) with them whilst travelling. A drivers license is not an acceptable document.

**VTBB/Bangkok FIR** Monsoon season runs July-September. Big potential for holding and airport closures in the region, taking extra fuel is recommended.

**OEZZ/Saudi Arabia** FIR is introducing new Navigation Charges on 01JUL. All the maths is here.

**LSZA/Lugano** will close 10-19OCT due to heavy maintenance work on the main runway. No traffic will be able to operate. The airport operator has said 20OCT should be the reopening day but risk that this may be extended.

**WMZZ/Malaysia** Following a directive by the Malaysian Immigration Department, all foreign nationals travelling on all domestic flights will be required to produce passports upon passing through Immigration control, effective immediately.

**Azerbaijan** An online e-visa issuing system, called ASAN Visa, will be established that should streamline the visa application process. Eligible foreign nationals will be able to obtain supporting documents, submit their visa applications and receive an e-visa within three days of submission through the portal. The list of eligible nationals is expected to be available soon on the Foreign Ministry website.

**EGPK/Prestwick** has ongoing overnight closures due to ATC staffing problems, keep an eye on NOTAMs.

**EIDW/Dublin** will closed for 15 minutes at 1500Z on 23JUN due to a VIP departure.

**NWWW/New Caledonia** The South Pacific is not exempt from ATC strikes either; overnight closure of the NWWW airspace means no enroute traffic accepted in the FIR tonight – and sporadically ongoing. Note that the Fire Service also has reduced RFF category at specific times. Check Notams.

**SKED/Bogota FIR** NOTAM of the month award: Colombia Notam A1947 issued on 17JUN. Be aware of the potential for your Cabin Crew to request a change to the SID from ATC, unbeknownst to you. In full: "CHANGES TO STANDAR (sic) INSTRUMENT DEPARTURE (SID) COULD BE DONE BY RADIOTELEPHONY BETWEEN CABIN CREW AND THE CORRESPONDING ATS DEPARTMENT WHILE COMMUNICATION INTERCHANGE, IN ACCORDANCE WITH AERODROME OPERATIONS REF. AIP ENR 1.10".

We actually have no idea what they mean. Let us know, and keep an eye out for those sneaky flight attendants.

**LEPA/Palma** has a bunch of outages, and runway and taxiway closures at present that will create restrictions and delays. Take a close look at your arrival and dep times before operating.

**Suriname** Immunisation checks for Yellow Fever are being carried out throughout June at all border check points, ports and international airports in Suriname; make sure you have a valid yellow fever certificate if required.



**RJZZ/Japan** On 22JUN heavy rains caused building damage and fatalities in southwestern Japan. At least six people died, as a result of the rain and mudslides across the island of Kyushu. Emergency personnel evacuated several hundred people due to the threat of further mudslides.

**Uzbekistan** has increased security due to a major summit, from 23-34JUN which may result in changes to flight departures and lengthy check in and security clearance at airports across the county.

[View the full International Bulletin 22JUN2016](#)