

Nepal's New International Airport

OPSGROUP Team

26 April, 2022



A second international airport has officially opened in Nepal. Here is the lowdown on it.

Introduce us.

It is called **VNBW/Gautam Buddha**, and it is located in Bhairahawa, approximately 250km west of VNKT/Tribhuvan International Airport in Kathmandu.

The airport was officially inaugurated on **April 22, 2022** but won't see any international flights until May 16. It isn't entirely new – an old airport was located here, and the original runway now serves as a taxiway.



The new airport lies on the border with India.

What's the lowdown on it?

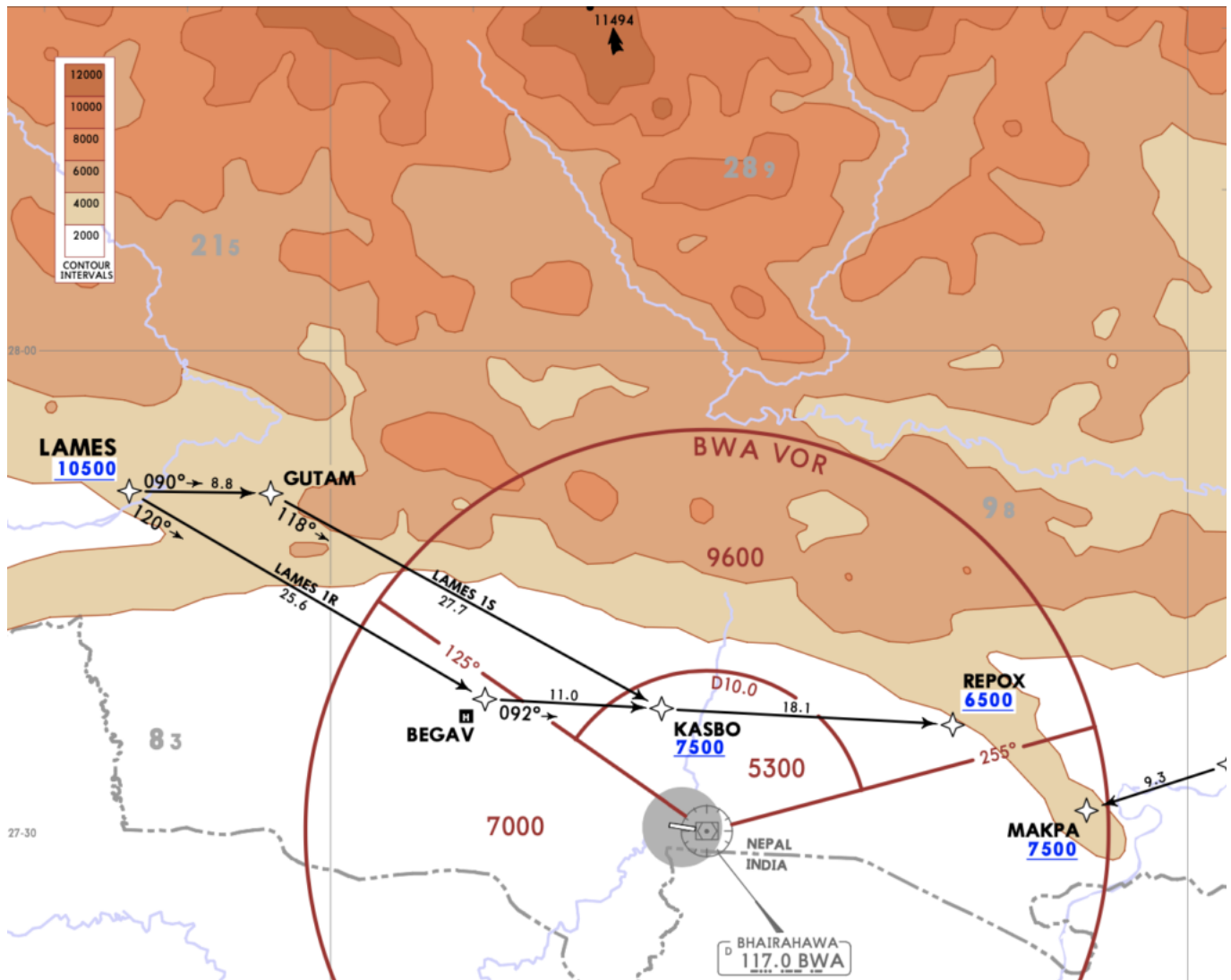
The airport has a **9834' (3000m) runway** with a RNP approach to 10 and 28, and a VOR approach to runway 10 as well.

You're going to want to watch out for the high terrain which lies to the north of the airport. **The MSA is 9600'** in the northerly sector, and 7000' for the rest, all of which makes for some altitude restrictions on the way in and out.

The airport itself is relatively small - just a few stands of the international apron and a few on the domestic apron.

The airport is RFF 5.

It isn't a 24 hour airport though. The tower is only operational daily 0600-1845 local time (0015-1300z) and the general operational hours are Sunday-Thursday 1000-1700 local, 1000-1600 Wednesday and Friday 1000-1500.



Watch out for some serious terrain nearby.

Who can we talk to there?

We have a few contact details for you. Starting with the **general airport info**:

- Telephone: +977 71 507 110
- Email: gautambuddha_cao@caanepal.org.np
- Tower: 122.5
- AFTN: VNBWYDYX

There is an **agent based in Singapore** who can offer some support if you want to operate in:

- Telephone: +65 6592 7623
- Email: ops@aerogon.aero

Fuel is expected to be supplied by AEG, and they **only have Jet A1**.

Want some more info?

The AIP section for the aerodrome can be found here. It's valid today, but might not be tomorrow so don't use for operational purposes.

And they are building more...

Pokhara International Airport is expected to open later in 2022, offering connections to neighbouring countries whilst Nijgadh International Airport is expected to open sometime in 2025.

Midweek Briefing 08JUN: Unsafe Airspace, New China ADIZ

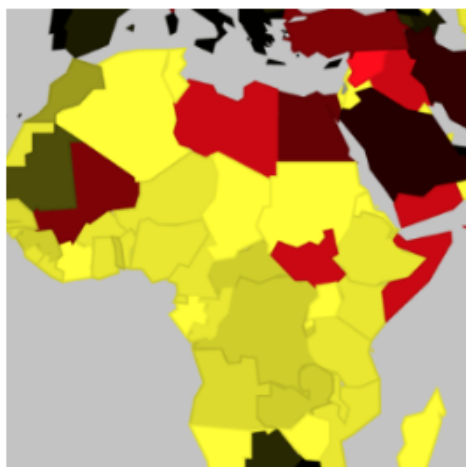
Cynthia Claros
26 April, 2022

INTERNATIONAL BULLETIN

ISSUED BY FLIGHT SERVICE BUREAU

SITA HNLFSXH AKLFSXH AFTN KMCOXAAL

EMAIL INTL.DESK@FSBUREAU.ORG



Unsafe Airspace - new summary issued 08JUN Today Flight Service Bureau published International Ops Notice 02/16 - "Unsafe Airspace".

New China ADIZ - South China Sea 08JUN There have been several media reports this week that China is preparing to set up a new ADIZ in the South China Sea. Read the article.

KCLT/Charlotte New SIDS and STARS for aircraft arriving and departing to the Northeast have been added to CLT as of May 31. Also, construction of a new ATC tower has also broken ground, the new tower will be equipped with NextGen systems that include STARS (Standard Terminal Automation Replacement System), ADS-B (Automatic Dependant Surveillance - Broadcast) and AEFS (Advanced Electronic Flight Strip System).

CZZZ/Western Canada has been experiencing fuel shortages due to recent wildfires in the oil patch. Please check with local handlers for any fuel constraints.

KZMA/Miami FIR NASA is planning on launching a Delta IV rocket on 09JUN. Please check KZMA FIR NOTAMS for restrictions.

KZZZ/USA Tropical Storm Colin has passed Florida, Georgia, South Carolina and North Carolina before moving out over the Atlantic.

CYQY/Sydney, Nova Scotia has added 2 fire trucks and increased staffing levels to provide ARFF CAT 6 or 7, time of day pending. CYQY has issued NOTAM 1A3425/16 covering those hours.

LLZZ/Israel has signed an agreement with Eurocontrol and will allow the country and it's users to benefit from the services that Eurocontrol provides. This is excellent news for filing out of LLBG and transiting to or over Europe as this will help streamline the process significantly and coordination will only have to be with Eurocontrol for any changes.

RCTP/Taipei has resumed operations on June 3 after operations were suspended due to flash flooding. The airport has also lost power numerous times due to the unstable power supply following days of severe flooding. While the power cuts rendered the terminal's air conditioning system inoperable, the airport experienced only minor delays.

VNKT/Kathmandu has been experiencing problems with the VHF ATC equipment. Aircraft on approach and Area Control freqs may experience increased squelch and at times leaving ATC without comms.

HSZZ/Sudan has warned it will shoot down any aircraft that infiltrates it's airspace that has not obtained the proper permission and/or following proper procedures. If you need to transit this airspace please make sure you have all the required documentation.

FHSH/St Helena has reportedly delayed the airport opening indefinitely, due to safety concerns – severe turbulence and windshear were commonplace during testing trials by a B737-800.

China Beijing – The Mainland Affairs Council (MAC), which supervises relations across the Taiwan Strait, on Friday issued a yellow travel alert for Beijing after the first H7N9 flu infection case for this year was confirmed in the Chinese capital.

Malaysia Malaysian officials fired several officials on charges connected to a security breach at Kuala Lumpur International Airport (WMKK/KUL). Security officials stated that airport security officials collaborated with human trafficking syndicates to bypass the airport's passport verification system. The investigation discovered that, since 2010, airport officials purposely disrupted the immigration system at certain times of the day on several occasions. Malaysian officials will publish a report with the full findings.

Angola The World Health Organization (WHO) reported on 27 May 2016 that 301 people have died in Angola's yellow fever outbreak, which began in December 2015. The number of suspected cases is now 2,536. The outbreak began in Luanda and has since spread to areas throughout the country, particularly along the coast and in the central regions, despite a large-scale vaccination program. Cases linked to the Angolan outbreak have also been reported in the Democratic Republic of Congo (DRC), Kenya and China.

Jamaica is now charging a \$35 US departure tax for all air passengers.

Uzbekistan British FCO cautions when travelling with medicines; you can be detained on arrival if you're in possession of certain medicines, including codeine; you should always carry a doctor's prescription with you.

France – the Air France pilots' union announced a work stoppage for 11-14 June, coinciding with the first week of the Euro 2016 soccer championship. The strike has been planned in protest over pay disputes, and the union has stated that it may observe further strikes. Further details are likely to emerge, as the situation is developing.

Yemen On 28MAY, approximately 20 gunmen stormed Aden International Airport (OYAA/ADE). A 90-minute gunfight followed the attack, during which one civilian was killed by a stray bullet. Authorities regained control of the situation and detained the gunmen's suspected leader.

Nepal A nationwide general strike is planned on Thursday 09JUN2016 across the country. Protest can occur at short notice anywhere. Stay cautious and stay away from these areas.

View the full International Bulletin 08JUN2016

Monday Briefing: Sinai Airspace avoided, Low

Vis creates day of chaos

Declan Selleck

26 April, 2022

INTERNATIONAL BULLETIN

ISSUED BY FLIGHT SERVICE BUREAU

SITA HNLFSXH AKLFSXH AFTN KMCOXAAL

EMAIL INTL.DESK@FSBUREAU.ORG



02NOV2015 HECC/Cairo has requested that traffic through PASOS point on the boundary with LCCC/Nicosia FIR be rerouted, effectively closing airway UL550 and the Sinai peninsula. Shown on radar image above, most traffic is avoiding the area that an A321 crashed in on Saturday. No definite link is being made but Authorities and Operators are naturally cautious.

02NOV2015 Conditions perfect for fog across the UK and western Europe are causing widespread delays this morning. Unusually, almost all airports from EGCC/Manchester to EDDF/Frankfurt are affected by the same conditions, with many airports down to 100 metres vis. Most not accepting diversions. See below for further.

EXXX/Europe High delays in most Airports in a square containing EGCC/Manchester, EBBR/Brussels, EDDF/Frankfurt, and EDDH/Hamburg. Total of approx 120,000 slot delay minutes in Eurocontrol system. Other high delay airports include EHAM, EGLL, EGKK, EGSS. Check NOTAMs as most are not accepting diversions either. Fog forecast to be similar again overnight.

VTBB/Bangkok FIR A minimum departure interval of 4-8 minutes between same direction departures is in force from 30OCT for aircraft departing VTCC VTCT VTUU VTUD VTSP VTSG VTSF VTSB VTSM AND VTSS. Delays during peak hours are expected.

UUBC/Grabtsevo New Russian Airport now fully operational with 2200m runway (12/30) and able to accommodate international traffic up to A320/737 size.

UHSS/Yuzhno Sakhalinsk, a common Polar alternate, is closed due runway repairs 1200-2100Z until 01DEC and therefore not available as ALTN for Flight Planning.

NTTA/Tahiti will be without radar on 03NOV after 1800Z. As with all radar outages there is potential for delays and restrictions.

KXXX/USA Runway current closures: BWI-RWY 10/28, SEA-RWY 16C/34C, LAS-RWY 7L-25R.

KSFO/San Francisco will close Taxiway Q and B on 07/08NOV to resolve a pavement issue. This will create a one-in-one-out restriction for aircraft taxiing to and from all gates west of Taxiway Q1. Specifically, this will affect United Airlines, SFOs largest customer, as a majority of its gates are west of Q1. Additionally, the proximity of the closure area to Taxiway B1 will render B1 unusable due to insufficient wing tip and jet blast clearance with the construction area. The loss of Taxiway B1 means that access to the end-around Taxiway Z will be unavailable.

HKXX/Kenya No longer possible to obtain a visa on arrival for passengers. Must now be arranged prior to arrival online at <https://account.ecitizen.go.ke/register>.

SOOO/Cayenne FIR, South Atlantic – Aircraft not FANS 1A equipped, east of 50W in the Cayenne FIR, can now expect a maximum level of FL310 westbound.

EXXX/Europe The European Business Aviation Association (EBAA) is providing a new tool to calculate Passenger Taxes payable in EU countries. The “PaxTax” tool calculates the total passenger tax for the flight, and breaks down the cost for both departure and arrival for the respective national taxing authorities.

YBBN/Brisbane New \$45m international terminal opened 28OCT after 18 months of construction. The facility can handle 7.5m pax annually.

VNxx/NEPAL Fuel supply update: China will supply fuel to Nepal for the first time ever, in response to a dire fuel shortage caused by disrupted supply lines with India. China will supply 1.3 million liters of gasoline, which will be transported to Kathmandu from the border via 100 tanker trucks. Please continue to check local NOTAMs for fuel availability.

DNxx/Nigeria FIR Widespread reports of a strike forcing the closure of Nigeria’s airspace have been deemed unreliable, per the Nigerian CAA. There is unrest and occasional industrial action, but no risk of airspace being closed.

Timezone Changes As DST ends in the Northern Hemisphere, series of clock changes completed on 01NOV as US ended Daylight Savings. Most of Europe completed theirs on 25OCT. Most northern countries are now on Standard Time.

View the complete International Operations Bulletin for 02NOV2015.

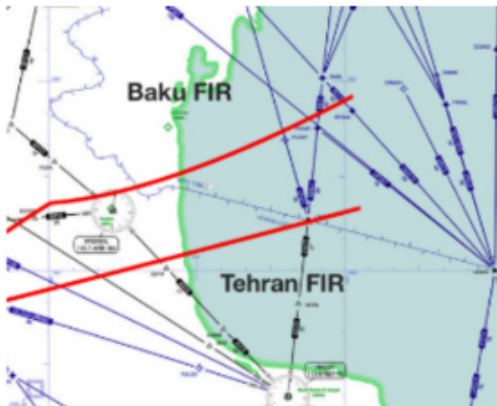
Monday Briefing: North Atlantic Changes, Caspian Sea Missiles

Declan Selleck
26 April, 2022

INTERNATIONAL BULLETIN

ISSUED BY FLIGHT SERVICE BUREAU

SITA HNLFSXH AKLFSXH AFTN KMCOXAAL
EMAIL INTL.DESK@FSBUREAU.ORG



19OCT2015 Flight operations in the NAT region will see significant changes in around three weeks time, including new 'half-degree' NAT tracks, new Entry Points in Gander and Shanwick OCA's, and several procedural changes. A Special Bulletin with plotting chart, summarising the changes, will be issued by Flight Service Bureau next week.

19OCT2015 Last week 26 cruise missiles were launched across International air routes in Azerbaijan, Iraq, and Iran, with reports suggesting 4 did not travel as intended. The risk to aircraft operators is summarised in our International Ops Notice 10/15, see below for details.

RPHI/Manilla FIR, Philippines Typhoon Koppu has maintained its strength as it continues to move northward with slightly increasing forward speed along the shores of Ilocos Sur, Luzon. Current location (1200Z Monday) is to the west of RPLI/Laoag Airport. It is forecast to weaken to a Tropical Storm within 24 hours. No reports of airports affected so far.

OMDW/Dubai World hosts Dubai Airshow 08-12NOV. Landing Permit required for all flights, 3 days processing, standard documents and requirements. Slot required for OMDW, window +/- 5mins. Show details at www.dubaiairshow.aero

OPRN/Islamabad, Pakistan closed 1300-1800 daily due runway works 18-28OCT.

SEXX/Ecuador A new DGAC resolution now effective permits non-scheduled aircraft to land without a Landing Permit as long as the aircraft is operating under private ops, will not stay longer than 72 hours in Ecuador, and visits only one location in Ecuador. The official document is [here](#) (in Spanish).

VHHH/Hong Kong with effect 25OCT (IATA Winter 2015) will amend slot issuing procedures to give priority to operators with higher capacity aircraft, and where same types conflict for the same slot time, lower noise levels.

LIXX/Italy ATC Strike confirmed for 24OCT (Saturday) 0800-1600, service will be provided to Overflights and Intercontinental flights only.

LTXX/Turkey Traffic operating through the south eastern part of Turkish airspace to/from Tehran and Baghdad FIRs should check Notams for restrictions. Several restrictions up to FL310 due to military operations.

EGXX/Shanwick Large scale Military Exercise 'At Sea Demonstration' ASD15 affecting OEP's ERAKA and GOMUP starts on 19OCT.

LFxx/France Datalink implemented from 22OCT LFRR/Brest and LFBB/Bordeaux ACC from 0900L. Initial phase, no ACL (Clearance via CPDLC), and aircraft must be on Eurocontrol whitelist. Ref France AIC A22/15.

VNXX/Nepal continues to experience shortages of fuel due to a halt in shipments coming from India. Available fuel for domestic airlines is rapidly decreasing, and authorities worry that domestic flights will soon be unavailable. The Nepalese government has requested that international airlines carry return fuel or refuel at airports en route, as Tribhuvan International Airport (VNKT/KTM) has no available fuel.

View the full International Ops Bulletin for 19OCT2015.