

Movie Stars and Racing Cars: Special Flight Ops in Southern France

Chris Shieff

15 May, 2023



The sun's back out in Southern France, and so are the high rollers, race car drivers and movie stars.

That's right – it's that time of year again, with two major events stacked back-to-back – the Cannes Film Festival (May 16 – 27) and Monaco Grand Prix. It's the jewel of the F1 calendar (May 25-28).

This means an influx of business jet traffic to two major airports – **LFMD/Cannes** and **LFMN/Nice**, where some of the world's wealthiest will come out to play.

It's not all caviar and roulette though – you'll still need to be able to land there first. **Three AIP SUPs** have been published to help that happen. Here's what you need to know about them.

LFMD/Cannes

AIP SUP 30/23 has the deets here.

The airport itself isn't normally co-ordinated, but you'll **need a slot** to go there between May 16 – 29. That info is found on this website. The apron is going to be chock-a-block too – a word of warning, you won't be allocated a slot unless you have confirmed parking too.

If you like to manage things yourself on the ground, you're out of luck. Handling services will be mandatory during this period, and it seems there's only port-of-call:

AEROPORT CANNES MANDELIEU / SKY VALET

<https://cy.myhandlingsoftware.com>

E-mail: operations-acm@cote-azur.aeroport.fr

Phone : +33 (0) 4 93 90 41 10

You may not get your requested slot, so a little flexibility may help here. When you get an **authorisation**

number, this will need to go into Item 18 of your flight plan. Without it, EUROCONTROL will likely refuse it.

Don't be tempted to fly the hop between Cannes and Nice either, in either direction. These flights will be **banned** between May 26 – 29.

LFMN/Nice

AIP SUP 27/23 is the one to check out here.

Nice is co-ordinated year-round, so there's less of a surprise. As above, you'll need to co-ordinate a slot to arrive or depart.

Once again, hiring ground handling services will be mandatory. This time there is a little more choice though. According to the AIP SUP, roll the dice and pick between:

AVIAPARTNER EXECUTIVE

<https://www.aviapartnerexecutive.com/nice>

E-mail: nce.executive@aviapartner.aero

Phone: + 33 (0) 4 93 21 37 37

DC AVIATION G-OPS

<https://www.dca-gops.com/>

E-mail : nice.ops@dca-gops.com

Phone: +33 4 93 21 58 12

Monaco

Monaco itself doesn't have an airport. In fact, it is the second smallest country in the world and is found on France's Côte d'Azur – its south-eastern coast. Inside Monaco is the district of **Monte Carlo**, where the F1 race is taking place. Most fans and participants will enter via Nice.

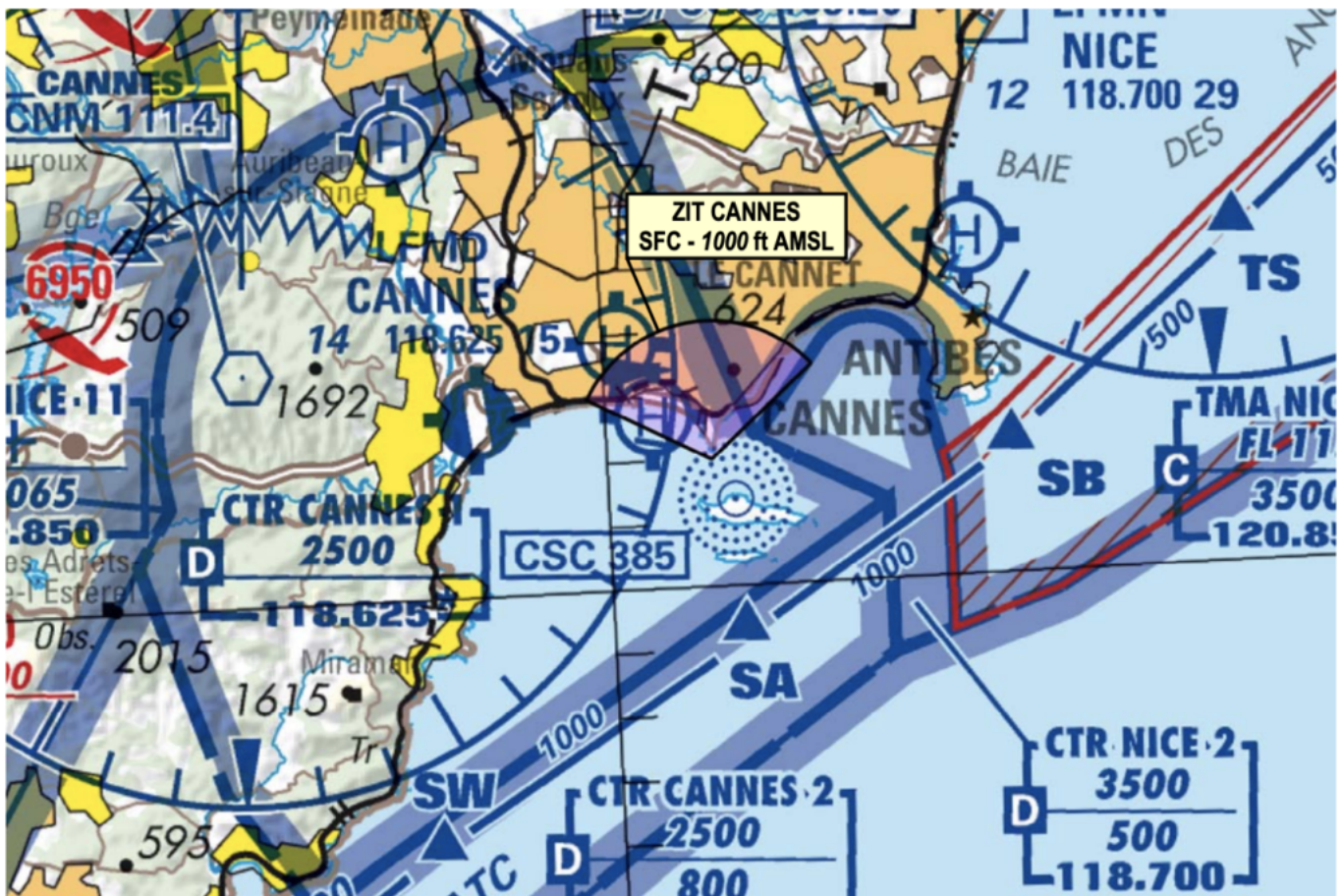


If you're looking for crew accommodation there, book early. Things fill up, and it becomes astronomically expensive – if it isn't already.

Restricted Airspace

Info on this is published in yet another SUP – this one: AIP SUP 076/23.

From May 16 – 28, unless you are special traffic you will **not be able to overfly the city of Cannes** at low level.



Flights over the city of Cannes are restricted throughout the film festival.

Keep an eye out for intensive helicopter traffic. For **IFR traffic departing on a SID**, it is important to follow published climb gradients and altitude requirements. If you don't think you'll make it – let ATC know with your start request. You may get hit with a delay, but it's better than the alternative..

We're expecting another AIP SUP to be published closer to the F1 Grand Prix which may be more restrictive, and so we'll keep this article updated.

Formula 1 & Movie Stars: Special Procedures in Southern France

Chris Shieff
15 May, 2023



In Southern France, two of the **biggest events of the year** are taking place almost simultaneously – and it's the perfect storm for an influx of private jet traffic to the region's main airports.

The Cannes Film Festival has just started, and will run until May 28. This is followed by the Formula 1 Monaco Grand Prix on May 29. As one of the most famous events in motorsport, it attracts huge crowds. Both these events are happening within 50nm of each other.

As a result, the nearest major airports, **LFMD/Cannes** and **LFMN/Nice** will see much higher traffic volumes than normal – and both airports are heavily restricting operations.

Three AIP SUPs have been issued for the events. Don't feel like delving into all of them? We don't blame you. **Here's a quick summary** of what they cover.

LFMD/Cannes

AIP SUP 052/22 has the deets here.

The apron is going to be full. The airport isn't normally coordinated, but you'll need a **slot** if operating in or out between May 17 – 30. You'll get a slot ID that needs to go into Item 18 on your ICAO flight plan.

Even if you like to manage things yourself, the use of handling agents will be **mandatory** during this time.

Also, if you're planning on a short hop to **LFMN/Nice** on May 28-30, no bueno. More on that below.

Monaco

Monaco itself doesn't have an airport. In fact, it is the second smallest country in the world and is found on France's Côte d'Azur – its south-eastern coast. Inside Monaco is the district of Monte Carlo, where the race is taking place.

The majority of passengers for the Grand Prix will enter via **LFMN/Nice** which is found around 20nm further west along the coast.

LFMN/Nice

AIP SUP 058/22 is the one to check here.

- All arriving and departing aircraft operating at Nice from May 24 -30 will also need to co-ordinate a time slot. You can either request one directly, or ask your handling agent to get one for you.
- You won't be eligible for a slot unless your handler has **guaranteed you a parking space** when you get there – so make sure there is room for your ride first.
- When filing your flight plan, commercial operators **won't** need to include their slot ID number. But if your arrival or departure time is outside your allocated slot, your plan will bounce back.

Restricted airspace.

Info on this is published in yet another SUP – this one: AIP SUP 107/22

- From May 28 – May 30, **special restrictions** will apply to all traffic.
- All VFR ops will be banned, and **IFR flights will not be allowed between LFMN/Nice and LFMD/Cannes**, which is a little further west along the coast.
- There will be **intensive low level helicopter traffic** to look out for. For IFR traffic departing on a SID, it is important to follow **published climb gradients** and altitude requirements.
- If you don't think your ride will make it, you'll need to let ATC know with your **start up request**. In that case you may get hit with a delay, but don't spring it on them at the last minute.
- A **temporary restricted area** will be in effect which will primarily affect traffic over the event, and at LFMN/Nice airport, and will apply from surface to 3,500'.
- If you're operating on a valid flight plan, the impact will pretty minor. Just make sure you are in contact with **Nice Tower** on 122.375, and follow their instructions. You'll need permission to enter it.

The big question, who will win?

Not only is he the championship leader, but Ferrari driver Charles Leclerc is also a local to Monaco. He's the home favourite to top the podium on race day.

Some useful contacts.

LFMD/Cannes Airport Authority +33 (0) 4 89 88 98 28.

Handling

Skyvalet +33 (0) 4 93 90 41 10, operations-acm@cote-azur.aeroport.fr

LFMN/Nice Airport Authority +33 (0) 4 93 17 21 18. If you're looking to get a slot approval directly from them, email nice-caz-agta-ld@aviation-civile.gouv.fr.

Handling

Menzies +33 (0) 4 83 76 26 02, Florence.augustyniak@johnmenzies.aero

Signature +33 (0) 4 93 21 82 18, NCE@signatureflight.fr

Swissport +33 (0) 4 93 21 58 12, nce.operations@swissportexecutive.com
