

International Bulletin: Winter is Coming, Updated Canada Requirements

Cynthia Claros
10 November, 2016

**INTERNATIONAL
BULLETIN**

ISSUED BY FLIGHT SERVICE BUREAU

SITA HNLFSXH AKLFSXH AFTN KMCXAAL

EMAIL INTL.DESK@FSBUREAU.ORG



Winter is coming 09NOV With the clocks changing, it's a reminder that we're not far away from the snowstorms, deicing delays, cancelled flights, airport shutdowns, and those big invoices for de-icing fluid. Our new author Frank Young has an article.

Updated Canada requirements 09NOV From tomorrow, November 10, an eTA is now mandatory for flights to Canada (for most people), and there's an update to flying to Canada with a previous conviction. Read the article.

BIKF/Keflavik Long a destination for flight certification testing (because it's cold and windy), will not accept test flights until February next year, thanks to runway renovation work.

ZZZZ/Worldwide Last week we ran a story about the new ICAO SID/STAR phraseologies. In short, some countries are implementing, and others aren't. We're going to make a list of who's doing what, so that you as an operator or pilot will have some idea. Can you help us? What is your country doing? Tell us at bulletin@fsbureau.org.

LTBA/Istanbul At about 0100 local time on 6 November, two people on a motorcycle opened fire outside Istanbul Ataturk International Airport, prompting a temporary closure. Reports indicate that authorities apprehended both suspects and did not find additional weapons or explosives on their persons. Officials briefly placed the airport on lockdown but reopened the facility at about 0130. The incident reportedly did not affect flights, and the gunfire harmed no civilians or police officers.

CZZZ/NAT Region The FAA has recently determined that time estimates provided by pilots in oceanic CTAs are less accurate than expected, particularly when adverse weather causes pilots to deviate from the planned course. These inaccurate estimates can compromise the separation of aircraft. Have a read.

YMML/Melbourne Be aware of recent hoax ATC calls. Someone with a handheld radio has been making “go-around” transmissions on the Tower frequency, and at least one aircraft has responded. Airservices says there have been 15 such transmissions in the last few weeks.

CZZZ/Canada The NBAA has issued useful updated info for flying to Canada with previous convictions – Canada is known for refusing entry based on DUI charges. Today, November 9, is also the last day that you can enter Canada without an eTA.

PWAK/Wake Island – an ETOPS alternate – is closed on 11NOV for Veterans Day. They do say they will attend with 30 mins notice, so maybe two ETOPS circles are required for that day. Check other US ETOPS alternates on this date also.

UCZZ/Kyrgyzstan Since 4 November, if you’re staying for longer than 5 days, you must register with the local authorities.

PKMJ/Majuro is downgraded to Cat 6 until November 23, which may affect some operators using this as an ETOPS alt.

EGNX/East Midlands airport has some weekend closures for the next six weeks.

VIZZ/India announced on 8 November that 500 and 1,000 rupee banknotes will cease to be legal tender as of 0000 local on 9 November 2016.

EVLA/Liepaja (one of Latvia’s three international airports) is now closed to all operations. They say they will be open again in Spring 2017. Fingers crossed.

LAZZ/Albania has been experiencing heavy rains, high winds and flooding throughout the country, causing road blockages, school closures, and disruptions in ferry services. The army has been mobilized for rescue and relief operations.

LFL/Lyon If you’ve been using LFL as an alternate at weekends, you’ll have to cut that out from December 10th, they don’t want weekend diversions of non-sched flights.

EGKK/Gatwick has advised of a new series of rail strikes that will run through to January next year.

MHTG/Central America FIR reminds operators that a **CENAMER notification** by AFTN is required for all flights planning to enter the airspace.

MTZZ/Haiti The US has published updated advice for Haiti: U.S. citizens are advised not to travel to the southern peninsula of Haiti, commonly referred to as the “southern claw.” The U.S. Embassy has currently banned unofficial travel to the southern peninsula and allows official travel only after consultation with its security office. There is widespread devastation throughout the southern claw with the most affected areas on the western tip of the peninsula. Travelers can expect difficult travel conditions with roads made impassable by landslides, damaged roads, and bridge failures. There is also widespread damage to buildings and infrastructure, including gas stations and cell towers, loss of electricity, and shortages of food and potable water. U.S. citizens who choose to travel to the southern claw in spite of these risks should carry sufficient water, food, fuel, and medicine to last longer than their anticipated stay. The security environment around the southern claw is fluid and uncertain.

LFOB/Paris Beauvais is closed overnight from 2200 to 0600Z, for 14-25 November inclusive, due to stuff.

HAZZ/Ethiopia On November 8, the Command Post – the body tasked with implementing Ethiopia’s state of emergency – lifted the restriction imposed on foreign diplomats, which restricted them from traveling more than 25 mi/40 km outside of Addis Ababa. The Command Post also lifted and revised several other state of emergency provisions; however, the changes are minor and are not likely to affect the current situation. The curfew and communication restrictions remain in place

NFTF/Tonga Fua'amoto (the main airport) has new operating hours – these are, in UTC: 1600 SUN TO 0530 MON, 1025 MON TO 0800 TUE, 1600 TUE TO 0530 WED, 1000 WED TO 0800 THU, 0900 THU TO 1200 THU, 1600 THU TO 0530 FRI, 1600 FRI TO 0800 SAT. They'll accept div traffic outside these hours, call +676 22 608 – but prefer no surprises on Sundays.

OMAA/Abu Dhabi will see heavy traffic for the Grand Prix on November 27, avoid if possible.

SBZZ/Brazil The office that processes Foreign Civil overflight and landing permits has updated hours of operation: Mon-Fri 1230Z-2230Z.

SBCT/Curitiba airport would like 4 hour PPR notice for non-scheduled flights, and request that you call them on 55-41-3381-1478 to arrange that.

SPJC/Lima, Peru has an upcoming APEC meeting 14-21 November, with a decent increase in traffic expected, and a few restrictions. They've also warned pilots to pay attention to radios and transponder codes to avoid them sending up the jets – good advice.

TVSV/ET Joshua Airport is closed due to flooding.

VECC/Kolkata Radio has a new HF frequency: 8861, with hours 1330Z-0130Z. Use this if 6556 or 10066 isn't working for you.

CZQX/Gander is going to auto-send you a "Confirm Assigned Route" message from 01DEC, on entry into their OCA – if you are FANS 1/A equipped. If you're not sure how to feel about that, read our previous article.

LCCC/Nicosia There's a good deal of mil activity – UN, and Russian – in the Cyprus region at the moment. Read the LCCC and surrounding FIR Notams carefully. Oh, and if you're not up to date on your Greek-Turkish FIR dispute, add LGGG and LTBB to that. As 2016 draws to a close, enough regional history has been published for an entire novel. This weeks Notam series covers the 1923 Lausanne Peace Treaty.

NZZC/New Zealand published a change to SID procedures today, and our brain hurts. We're not sure if this is related to the 10NOV ICAO SID/STAR changes, or .. something else. If you've got it deciphered, let us know. THE STANDARD INSTRUMENT DEPARTURE (SID) SPECIFIES IN BOTH DIAGRAMMATIC AND NARRATIVE FORM ANY OF THE FOLLOWING: THE DIRECTION OF TURN, HEADINGS, TRACK, DISTANCES, SIGNIFICANT POINTS AND ALTITUDE REQUIREMENTS. WHERE TRACKING TO OR FROM A NAVIGATION AID IS NOT POSSIBLE, DESIRED TRACKS ARE SHOWN AND DUE ALLOWANCE FOR WIND IS TO BE MADE. AIRCRAFT ARE TO CONTINUE CLIMBING THROUGHOUT THE SID UNLESS IN COMPLIANCE WITH PUBLISHED ATC MAINTAINS, DEPARTURE MINIMUM SAFE ALTITUDE (MSA) OR AS OTHERWISE INSTRUCTED. WHERE CONTINUOUS CLIMB TO THE END OF THE SID IS NOT REQUIRED A DEPARTURE MSA MAY BE DEPICTED ON THE RELEVANT CHART. THE DEPARTURE MSA REPRESENTS THE LOWEST ALTITUDE FOR OBSTACLE CLEARANCE ALONG THE ENTIRE DEPARTURE ROUTE (INCLUDING TRANSITIONS). IT REMAINS THE PILOT'S RESPONSIBILITY TO MEET SUBSEQUENT ENROUTE MSA/MINIMUM FLIGHT ALTITUDE (MFA)/MRA/MEA REQUIREMENTS APPLICABLE AFTER SID TERMINATION. DEPARTURE MINIMUM SAFE ALTITUDES DO NOT ENSURE CONTROLLED AIRSPACE CONTAINMENT.

OEZZ/Saudi Arabia has issued an extension of the policy that requires all aircraft with a destination in Yemen to first land in OEBH/Bisha – through to 08FEB next year. The only exceptions are the UN, Red Cross, and MSF.

VHHK/Hong Kong is going to move to a new ACC and ATC Tower towards the end of this month. There will be delays. The actual date hasn't yet been notified, we'll let you know when we hear.

View the full International Bulletin 09NOV2016

Midweek Briefing: High Seas Airspace, Canada New Entry Rules

Cynthia Claros
10 November, 2016

INTERNATIONAL BULLETIN	ISSUED BY FLIGHT SERVICE BUREAU
	SITA HNLFSXH AKLFSXH AFTN KMCOXAAL EMAIL INTL.DESK@FSBUREAU.ORG



High Seas Airspace - near misses 16MAR The Baltic Sea (Scandinavia) is seeing an alarming rise in traffic proximity events, and ICAO has issued guidance to operators with background and information. Military flights operating under 'due regard' are, well - not. **Read the full article** about High Seas airspace.

Canada New Entry Rules - relaxed 16MAR The new Canada Entry Rules - requiring most visitors to have an eTA before departing - came into force yesterday; with a caveat. In short: you should have one, but it's OK if you don't - at least until September 2016. **Read the full article.**

Cxxx/Canada The new Canada Entry Rules - requiring most visitors to have an eTA before departing - came into force on 15MAR; with a caveat. In short: you should have one, but it's OK if you don't - at least until September 2016. Read the full article.

Cxxx/Canada Effective 30MAR, Canadian rules will no longer require an approach completely independent of GNSS at the planned destination. However, where a GNSS approach is planned at both the destination and the alternate, the aerodromes will need to be separated by a minimum of 100 NM. Refer AIC5/16.

Baltic Sea Based on several concrete examples of missing flight plans, the Russian Federation, Finland and Estonia agreed to define 7 new waypoints for State aircraft operations over the High Seas that

could be used, to replace the current string of LAT/LONG coordinates, to facilitate all future FPLs between St. Petersburg FIR and Kaliningrad FIR. The ICAO Secretariat assigned the following 5LNCs: PISIS-PIDINPISIM-PIRUX-PINIX-PIVAX-PIPOM. All involved States (Russian Federation, Estonia, Finland and Latvia) agreed to implement/publish these waypoints (all over the High Seas), for the 30 MAR 2016 AIRAC date. Read the High Seas Airspace article.

North Atlantic CPDLC and ADS-C services will be out of service in Gander, Shanwick, Shannon and Reykjavik FIRs on 21MAR for periods lasting no longer than a few hours due to Inmarsat satellite replacement work. Please check the FIR NOTAM's that pertain to your operation that day.

Kxxx/United States Due to a missile launch from within Miami Airspace the FAA has issued NOTAM A0366/16 to advise of the potential impact to operations with KZMA, KZWY and TJSJ FIRs from March 16 to March 17th. Please check the NOTAM for full details on all the possible routing constraints.

LTXX/Turkey NATO has begun surveillance within the Turkish FIR as part of assurance measures for Turkey. The first duty period was 12-15MAR.

Time Changes Clocks go forward/back depending on whether you've just had a long winter or a long summer. The US changed on 13MAR, most of Europe is on 27MAR, Australia and NZ on 03APR. TimeandDate.com has a very useful list.

KTEB/Teterboro A new Charted Quiet Visual Runway 19 visual approach will be published on 31MAR. Starting 04APR, the FAA will test the procedure for 180 days to gauge pilot compliance and environmental impact to determine if the procedure will become permanent.

YMML/Melbourne will host the Formula 1 Grand Prix 17-20MAR, with additional traffic to both YMML and YMEN/Essendon during these dates.

KATL/Atlanta Officials in Atlanta are laying the groundwork for an expansion of the world's busiest airport. Work will begin soon on a \$6 billion expansion and renovation project at Hartsfield-Jackson Atlanta International Airport. Workers will update the domestic passenger terminal and concourses, and add a sixth runway and a hotel. Work begins on concourse renovations later this year.

Lxxx/Austria has issued AIC 4/16 outlining the near future use of more direct Free Route Airspace.

Oxxx/Iran The U.S. State Dept issued a Travel Warning to reiterate and highlight the risk of arrest and detention of U.S. citizens, particularly dual national Iranian-Americans, in Iran, and to note that FAA has advised U.S. civil aviation to exercise caution when flying into, out of, within, or over the airspace over Iran.

NVVV/Port Vila Runway 11/29 will be closed from 16MAR at 1300Z until 17MAR at 1930Z for maintenance. This essentially closes the airport during the time period.

Yxxx/Australia A reminder that Easter travel could be severely disrupted with Border Force and Immigration staff at international airports across Australia planning to take strike action on the eve of Good Friday.

UIBB/Bratsk Don't go. No fuel. Until 31MAR.

View the full International Bulletin 16MAR2016

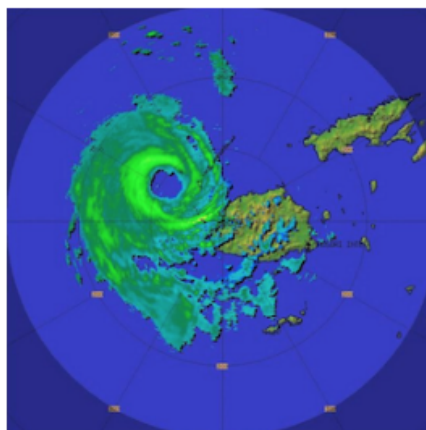
Midweek Briefing: New Wake Turbulence Categories, Fiji Cyclone Winston

Cynthia Claros
10 November, 2016

**INTERNATIONAL
BULLETIN**

ISSUED BY FLIGHT SERVICE BUREAU

SITA HNLFSXH AKLFSXH AFTN KMCOXAAL
EMAIL INTL.DESK@FSBUREAU.ORG



New Wake Turbulence Categories 24FEB New Wake Turbulence Categories will begin a slow introduction in Europe on 22MAR at Paris Airports LFPG/De Gaulle and LFPB/Le Bourget, where the current four (Light, Medium, Heavy, Super) will become six. Those six new categories are Light, Medium (with Lower and Upper), and Heavy (with Lower, Upper and Super). Read the full article ...

Fiji Cyclone Winston 24FEB Fiji sustained widespread damage throughout the Islands on 21FEB from Tropical Cyclone Winston; most airports are open and operating again, including all international airports (NFFN/Nadi, NFNA/Suva). The following domestic airports are also open: Kadavu, Labasa, Rotuma, Labasa, Rotuma, Gau, Kadavu. NFNA/Suva has no overnight parking available at present due to congestion caused by the Relief effort.

NFFN/Nadi, Fiji Hit by Tropical Cyclone Winston on 21FEB, while there is widespread damage throughout the Islands, most airports are open and operating again, including all international airports (NFFN/Nadi, NFNA/Suva). The following domestic airports are also open: Kadavu, Labasa, Rotuma, Labasa, Rotuma, Gau, Kadavu. Note that NFNA/Suva has no overnight parking available at present due to congestion caused by the Relief effort.

KAGS/Augusta, USA Special Procedures in place 07-10APR for US Masters Golf Tournament.

EXXX/Europe New Wake Turbulence Categories will begin a slow introduction in Europe on 22MAR at Paris Airports LFPG/De Gaulle and LFPB/Le Bourget, where the current four (Light, Medium, Heavy, Super) will become six. Those six new categories are Light, Medium (with Lower and Upper), and Heavy (with Lower, Upper and Super). The rules are part of the RECAT-EU project, with the intention of squeezing more traffic into busy European Airports by applying more precise turbulence separation rules. The separation

minima are determined specific to each Aircraft Pair. For example, at the moment, an A330 following a B777 (Heavy behind heavy) requires 4 miles in trail. With the new rules, that is reduced to 3nm. An A320 can now follow 4 miles behind a B777, instead of the current 5nm. There are no Flight Planning Changes (continue to use /L,M,H,J for the ICAO Category). For crews, you'll notice the smaller separation, but there are no changes to callsigns or pilot obligations – for now. [Read full article.](#)

DRRR/Niamey FIR Air Traffic Control 48HR strike 24 and 25FEB. The ASECNA Contingency plan is activated, with ATC provided by neighbouring ACC's Dakar and N'Djamena.

LTXX/Turkey We have received several reports that Overflight Permits, which were removed as a general requirement for non-scheduled flights in 2015, are being requested by Turkey for Business Aviation aircraft, specifically M- and VP- registrations. Reports welcomed to clarify to bulletin@fsbureau.org.

RCTP/Taipei Airport works on several parking positions may create availability issues from 04MAR-04APR especially for Airbridge gates. Check with handler.

LFPB/Paris Le Bourget Due WIP airport will be closed during 10 nights from 15FEB to 26FEB, every night from 2045 to 0500Z. No Medevac flights will be possible.

EPKK/Krakow Runway 07/25 is closed daily 2330-0430 until 03MAR.

UXXX/Simferopol FIR EASA published an updated SIB 2015/16 regarding the use of Simferopol FIR on 17FEB. The key change is the phased reintroduction of the use of Simferopol FIR for international transit traffic, on the basis of an evaluation of the high seas portion of the airspace (ie. outside the 12nm territorial limit of the Crimean Peninsula). This airspace provides routes UL851 and UM856 (Odesa South Sector), which since 17FEB are suggested by EASA for use by overflying traffic.

YMML/Melbourne will host the Formula 1 Grand Prix 17-20MAR, with additional traffic to both YMML and YMEN/Essendon during these dates.

EHAM/Amsterdam has changed the callsign of Schiphol Start-up to "Schiphol Planner".

OYAA/Aden, Yemen Airport closed and all flights cancelled since 21FEB due to security concerns.

NVTV/Port Vila On 17FEB local officials signed an agreement with a private contractor to begin repairing the runway. Several airlines suspended flights on 23JAN due to safety concerns with the airport's runway. Aviation officials stated that the renovations should begin in March.

[View the full International Bulletin 24FEB2016](#)

Monday Briefing: China ADIZ Flight Planning Rules, Warsaw FIR reroutes

Declan Selleck
10 November, 2016

China ADIZ FPL Rules Dec 4: Last weeks introduction of a new Air Defense Identification Zone (ADIZ) in the East China Sea requests operators to send FPL data to Beijing. There is no new requirement for overflight permits or prior permission. Advice being given to operators is to copy the ATC plan to the two AFTN addresses listed. Read more below ...

Poland FIR reroutes Dec 3: With the introduction of a new ATC System in Poland, significant restrictions exist in the Warsaw FIR and will continue into the new year. To reduce complexity, traffic originating in Russia is rerouted around Poland, the ACC is at 65% capacity and TMA at 75%.

LSGG/Geneva Transition to new stripless ATC system will be complete 11DEC. Approach running at 80% capacity until 10DEC.

EPWW/Warsaw ACC Significant restrictions in place for the next few months due to new system. Overall Enroute capacity reduction of 35%. Restrictions affect traffic departing from U... with destinations LI** LE** LO** EG**, LFP* and EHAM from 26 November until 15 January.

Afghanistan PPR is Mandatory for all flights to Bagram (OAIX), Jalalabad (OAJL), Kabul (OAKB), Kandahar (OAKN) and Tereen (OATN). For operations to more than one airfield, a separate PPR request form must be submitted for each one.

NAT/North Atlantic The FAA will publish a NOTAM on 12DEC detailing plans for the rollout of Phase 2 of the North Atlantic datalink mandate. Implementation will begin with Phase 2a on 05FEB2015, at which time flights within the North Atlantic Tracks (NAT) between FL350 and FL390 must be equipped with Fans 1/A controller-pilot datalink communications (CPDLC) and ADS-C systems. The program expands to these altitudes in the entire ICAO NAT region on Dec. 7, 2017, and to all flights in this region above FL290 on Jan. 30, 2020.

Philippines Due to ongoing relief efforts, fuel supply at the following locations is limited: RPMB/General Santos, RPMD/Davao, RPVI/Iloilo, and RPKV/Kalibo. There are also intermittent shortages at RPLL/Manila.

YML/Melbourne is introducing Ground Delay Program capability as an ATFM measure. Currently exists at Sydney, Brisbane, and Perth. Operators will be issued a COBT slot time and must adhere. Slots are available from the Australian National Operations Centre (NOC).

South America Chile and Peru have introduced Oceanic Procedures for flights operating within their Antofagasta and Lima Oceanic FIRs, particularly on routes Lima-Santiago and vv. Refer AIC 5/13.

LTAI/Antalya Technical Stops are now accepted during the Winter Period. Previously, AYT did not accept any technical stops due to slot demand.

Russia New requirements for API and PNR data for Airlines operating both scheduled and non-scheduled flights in effect 01DEC. API data should be transmitted 15 mins prior departure to SITA MOWRU8X. NOTAM A2345/13 and AIC 04/13.

Central America. Many operators overlook payment of Navigation invoices in Central America, overdue payment of which is not discovered **until a permit is applied for**. COCESNA, the agency managing ATC in the region, has reminded operators that flights will not be allowed with overdue balances. The following

are contact email addresses for the CAA/DGAC Billing department each country – check that your balance due is nil. Belize: est-belice@cocesna.org. Guatemala: cobrosguatemala@cocesna.org. El Salvador: cobroselsalvador@cocesna.org. Honduras: cobroslamesa@cocesna.org. Nicaragua: cobrosnicaragua@cocesna.org. Costa Rica: cobroscostarica@cocesna.org. **Ensure that you apply for a CENAMER Permit (CENAMER Notification)** before your flight into any FIR in this region.

Saudi Arabia Any flights landing at King Abdulaziz International Airport (KAIA) with passengers from Jijiga, Ethiopia (HAJJ) will be subject to a fine.

Turkey The DGCA announced on 27NOV that with immediate effect, original insurance certificates are required for **overflight** as well as landing permits related to scheduled flights. Previously, a PDF copy was accepted for overflights.

India Crews operating Ferry Flights and General Aviation crews can once again secure visas or TLP's (Temporary Landing Permits) on arrival into Indian airports. In addition, Indian missions and posts abroad have been authorized to grant business visas to crew of private non-revenue and charter flights within three days of the visa application. These visas will be endorsed on their national passport and not on the crew member certificate. These visa processing times also do not apply to crew who are nationals of a PRC country. Visas for these crew members could take as many as 30 days.