

New York ATC is grumpy for a reason

OPSGROUP Team

8 June, 2022



This started off as (and still really is) a very specific post just aimed at folk who operate into KTEB/Teterboro – because **the runway 06/24 rehab project has begun!**

So we copied all the information from the Teterboro User's Group site and threw it into here. But then we realised the 'problem' with KTEB is that it's very, very close to a lot of other bigger airports...

So if you operate into **KEWR/Newark, KLGA/La Guardia or KJFK/New York Kennedy** then we reckon it's worth a read too. Because you might not realise what is going on underneath you and having an idea of the lay of the land (so to speak) is useful for that old SA we all harp on about...

So Teterboro is back in rehab?

They have a whole 11 months of works (to April 2023) planned for **runway 06/24**. Mostly it means closures, and these are pretty much all planned over night and on weekends.

Overnight closure timings:

- Sunday, Tuesday, Wednesday, Thursday 22:30 – 06:30
- Monday 22:30 – 08:30

Weekend Runway closure times and dates:

- Friday 22:00 – Sunday 12:00 (until August 31)
- Sunday 12:01 – Sunday 23:59 (until November 30)

Weekend Airport closure times and dates:

- Friday 22:00 – Sunday 12:00 (July 1 until August 31)
- Sunday 12:01 – Sunday 23:59 (October 1 to November 30)

TEB – Operations Report

Presented at the MARCH 16, 2022 – TUG Meeting



➤ Airfield Construction

- RWY 6/24 Rehabilitation
 - Hours of Work/Staging:
 - Runway 6-24 Overnight Closures (April 2022 thru April 2023):
 - Sunday, Tuesday, Wednesday, and Thursday - 10:30 pm to 6:30 am the following morning
 - Monday 10:30 pm to 8:30 am Tuesday
 - Runway 6-24 Weekend Closures:
 - 38-hour closures – Friday 10:00pm to noon Sunday (May 2nd thru August 31st, total of 7)
 - 12-hour closures – Sunday 12:01am to noon Sunday (Oct 1st thru Nov 30th, total of 6)
 - Airport Weekend Closures:
 - 38-hour closures – Friday 10:00pm to noon Sunday (July 1st through Aug 31st, total of 6)
 - 12-hour closures – Sunday 12:01am to noon Sunday (Oct 1st thru Nov 30th – total of 2)

The TUG TEB WIP Times

But it is more than just the closures that you need to think about if you operate in here.

Arrival Stuff

Northerly Flow:

Depending on wind and weather, and what's happening at KEWR/Newark you can usually expect an ILS 6 with a Circle to Rwy 1 or the RNAV (GPS) X Rwy 6

They are trying to bring in lateral and vertical guidance for Rwy 1. Watch this space. The circle to Rwy 1 is a nasty little thing so check out their guidance on it.

Departure Stuff

Southerly Flow

If its a southerly flow you can expect the Teterboro 4 SID which means delays.

Why?

Because they try to keep a **10nm gap between KEWR/Newark 22L arrivals and KTEB 19 departures**. Which is why there is also the **Dalton 2 visual departure** (which only needs a 5nm gap).

Expect an infinite delay...

Well, that sounds bad. It doesn't actually necessarily mean a lengthy delay though, particularly if you can

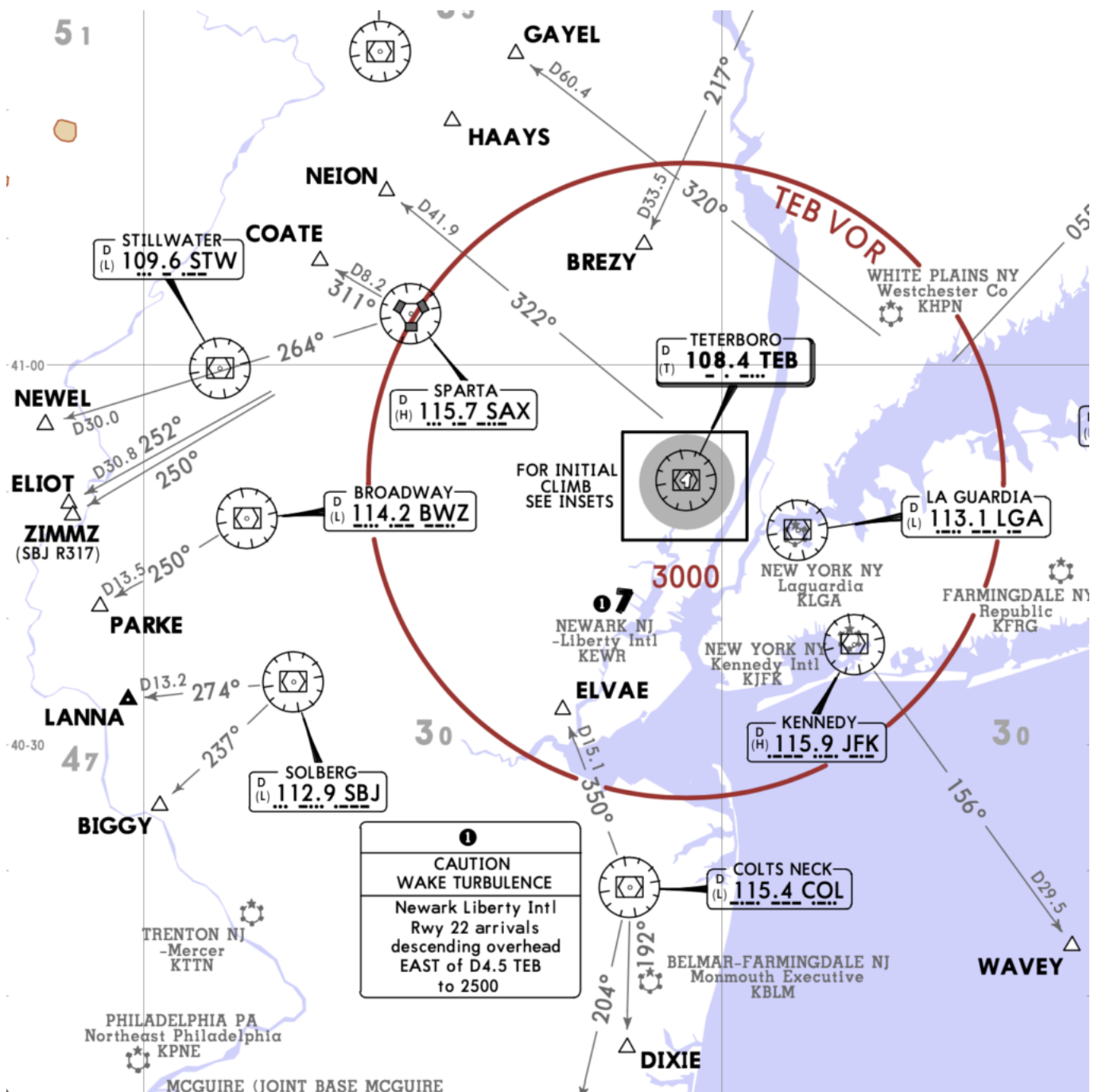
accept the Dalton 2. The Dalton 2 keeps you down at 1,300' and 180 knots in VFR until clear of all the KEWR traffic then you can expect a transition to an IFR clearance.

There is a meeting!

Yep, there is, on June 15 at 10:00 am EST. Organised through the Teterboro Users Group (TUG) which we strongly recommend you getting yourself in on if you do operate here and aren't already in on it.

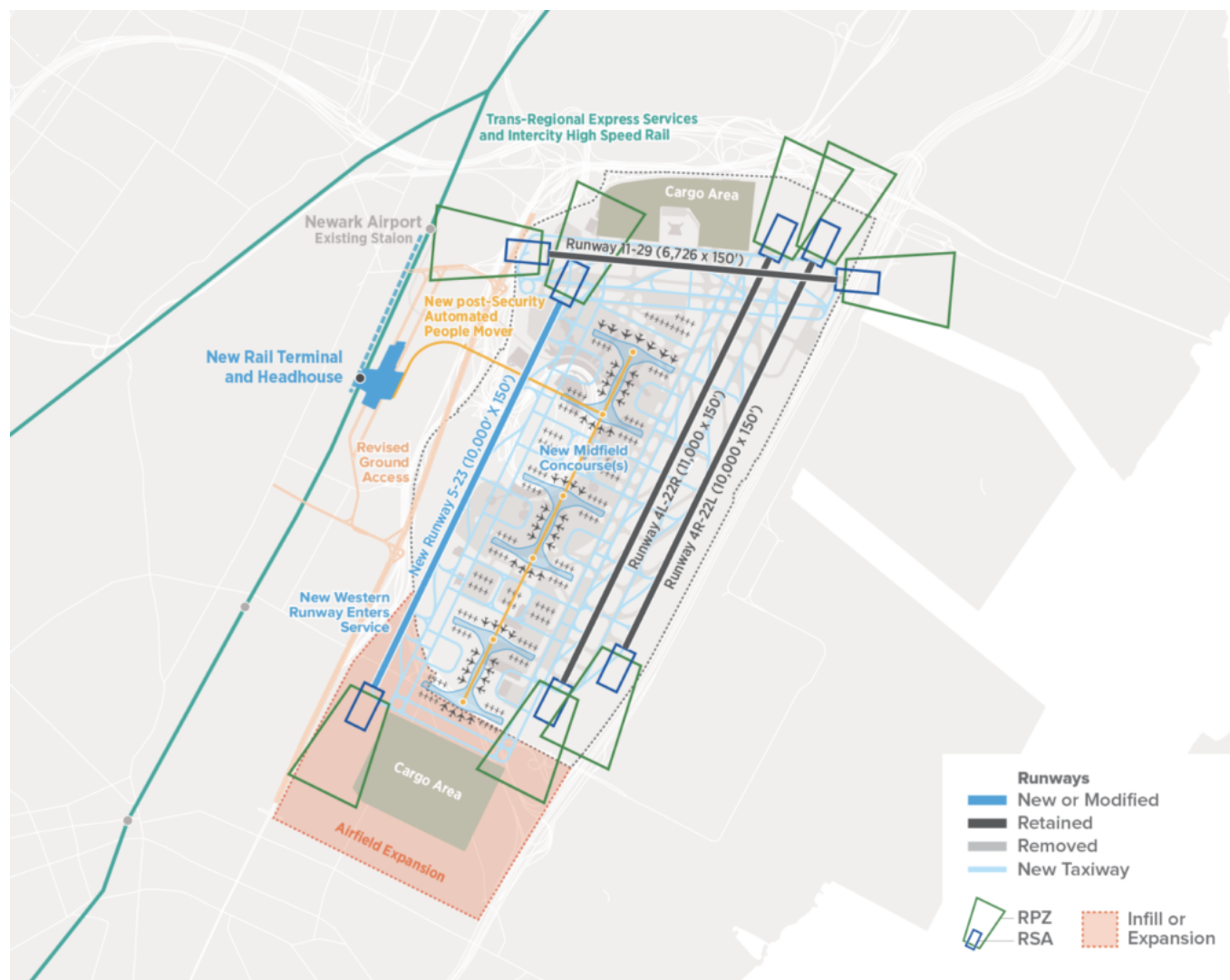
What else is going on down there though?

Well, like we mentioned, you've got **several major international airports** to consider as well, and some smaller executive airports and a military base. We counted and found more than 10 just in the immediate proximity to Teterboro.



This some of (possibly the) busiest little chunk of airspace in the world

KJFK, KEWR and KLGA have the dubious titles of **ranking first, third, and fourth for worst delays in the nation**. They are looking at ways to improve this, but most of them involve building more runways which won't necessarily help poor old KTEB stuck underneath the every growing traffic flow.



One of the proposals

Then there is the weather.

The east coast of the US gets hit with some pretty heavy storms. In April, a single day of bad weather saw over 4500 flights into the east coast delayed and the knock on effect across the busy airspace is considerable.

JFK Runway 4R closure for the summer

Declan Selleck
8 June, 2022



We got a couple of reminders that we hadn't covered this in our weekly bulletin, and ... you're right. So, here's the details.

So, **Runway 4R/22L** will be fully out from today **until June 1st**, and then it will be out overnight until Sept 4th, at which time it will be fully out again.

So, first up:

Phase I - 1st Full Runway Closure - 94 Days (Feb 27- June 1, 2017)

1. Runway will be fully paved after this
2. Runway will be returned to operations on June 1 with edge lights only

Because NYC Tracon is so tight, the 4R closure also impacts La Guardia and Teterboro, so we expect to see some delays and restrictions there as well.

For your reading pleasure, we've bundled all the documents about this into 1 PDF.

Oh and yes, that's Central Park and not Runway 4R, but it's prettier than some concrete.

Reference:

- JFK 4R Runway closure document package.