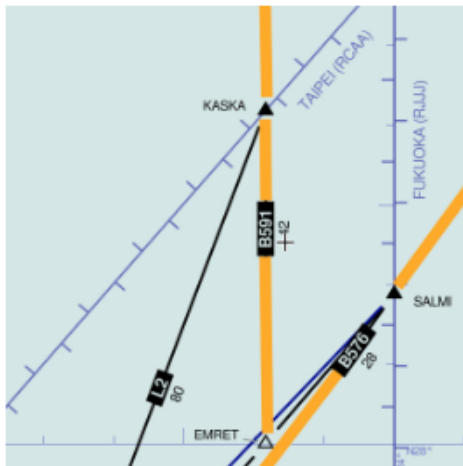


# Midweek Briefing: Taiwan ADS-B requirement, Costa Rica volcano

Cynthia Claros  
21 September, 2016

<b>INTERNATIONAL BULLETIN</b>	<b>ISSUED BY FLIGHT SERVICE BUREAU</b>
	SITA HNLFSXH AKLFSXH AFTN KMCXAAL EMAIL INTL.DESK@FSBUREAU.ORG



**Taiwan ADS-B requirement** 21SEP Yesterday, Taiwan pushed the requirement for ADS-B above FL290 for all aircraft, back to 2020 – as a fast approaching deadline of December this year was looming. Read the article.

**Costa Rica volcano** 21SEP MROC/San Jose, Costa Rica has reopened after the eruption of the Turrialba volcano on Monday. A risk of further closures continues. Read the article.

---

**OPZZ/Pakistan** Some airspace in the north of the country (Kashmir region) has been closed by the Pakistan CAA. Details are unclear but reports indicate Gilgit, Skardu and Chitral Airports are affected by the closure.

**BIKF/Keflavik** Departing KEF eastbound? Icelandic ATC would love you to file the following as a standard route: PIXUM PETUX ORTAV ODPEX, or 63N022W CELLO if you're planning to cross 10W at GOMUP or south of.

**EDDL/Dusseldorf** has closed 05L/23R for a couple of days to remove a WW2 bomb. Some delays at peak times may result.

**HLGT/Ghat, Libya** Three foreign nationals were kidnapped along the road that leads to Ghat Airport on 19SEP, located in the Fezzan province along the southwest border with Algeria. The foreigners were construction workers employed by the Italian-owned Conicos company to service Ghat Airport. There are numerous armed militia and terrorist groups active in the area and the foreigners were said to be operating under discretion due to the security risk.

**EDHL/Lubeck** will closed on Oct 4th for repairs – all day.

**ENGM/Oslo** will introduce new RNP AR approaches in November, available to all runways. Auth from Norwegian CAA is required to use them.

**FKKD/Douala** now requires PPR 72 hours prior arrival, for non-scheduled flights, due to upcoming space restrictions as a result of WIP. You can make requests directly to Airport admin at [pce.douala@adcsa.aero](mailto:pce.douala@adcsa.aero).

**GBZZ/Gambia** In a change to procedure, Overflight Permits, and Landing Permits for traffic operating to GBYD/Banjul, are now issued by the Department of Flight Safety Standards at the GCAA.

**HCMM/Mogadishu** has issued a security reminder to operators: "OPERATORS SHOULD EXER EXTREME CTN AND FULLY ASSESS THE POTENTIAL FOR RISKS TO FLT SAFETY AND SECURITY WHEN PLANNING OR CONDUCTING OPS INTO MOGADISHU AIRPORT DUE TO LACK OF INFORMATION ON ARMED CONFLICT AND LACK OF AERONAUTICAL INFORMATION."

**FAZZ/South Africa** The CAA has updated its warnings for operators, with new guidance for two airspace blocks: that affected by the Syrian conflict – namely Baghdad, Damascus, and Tehran FIRs; and that affected by recent concerns over the Northern Sinai – their advice is to overfly at FL260 or higher.

**LMML/Malta** airshow coming up on 24-25 Sept, multiple restrictions, check before operating or filing as alternate.

**FZZZ/DRC Congo** Since September 19 large-scale demonstrations have been resulting in violent clashes between demonstrators and security forces in Kinshasa and elsewhere in the country. The situation is particularly tense in Kinshasa where violence has caused casualties. These demonstrations could continue over the next few days and the situation could further degenerate. The sole road to the Kinshasa airport could be blocked and some flights have been cancelled.

**OJZZ/Jordan** It's White Stork migration season, and Jordan has issued warnings for all of its airports, for crews to be mindful of the high chance of presence of large flocks of them on arrival and departure.

**SKED/Bogota** has some comms issues on north/south bound routes to Peru (Lima FIR); 10 minute separation is applied between aircraft on these routes until at least Sept 26th.

**KZZZ/USA** For some good reading, the FAA (thanks Andy for passing this on), have updated their Aviation Weather guidance doc. This is the first revision to the document since 1975.

**Input:** ATC, Pilots, Dispatchers: Any topical items that you think should be going out to the community? Let us know, and we'll get your message out there. [tellus@opsgroup.co](mailto:tellus@opsgroup.co).

View full International Bulletin 21SEP2016

---

## Iceland ATC strike bigger than ever

Declan Selleck  
21 September, 2016



We had some really positive hints at a resolution of the Iceland ATC strike last week, but it's not over yet – by any measure. Today sees another long list of airspace and airport closures. Oceanic Eastbound, Westbound and landing traffic all affected.

**BIKF/KEFLAVIK A0454/16 06JUL 1007Z**

(NOTAMR A0453/16) – DUE TO STAFF SHORTAGE BIKF TWR SERVICE LIMITED TO SCHEDULED COMMERCIAL AND INTERNATIONAL FLIGHTS, AMBULANCE AND EMERGENCY FLIGHTS. NO TOUCH AND GOES OR LOW APPROACHES FOR VFR TRAINING FLIGHTS, ONLY DEPARTURE AND ARRIVAL. TWR BIKF SERVICE LIMITED TO AMBULANCE AND EMERGENCY FLIGHTS ONLY DURING THE FOLLOWING HOURS: 09:00-09:30, 11:30-12:00 AND 14:00-14:30. 06 JUL 10:05 2016 UNTIL 06JUL 21:00 2016.

**BIRD/REYKJAVIK OACC A0452/16 05JUL 2146Z**

(NOTAMR A0451/16) – DUE TO STAFF SHORTAGE IN REYKJAVIK OACC WESTBOUND TFC PLANNING TO ENTER BIRD FROM ENSV VIA GUNPA, VALDI, IPTON, INGAL, ISVIG AND EGPX VIA LIRKI, GONUT, OLKER, MATIK AND RATSU AND THEN PROCEEDING INTO EGGX OR CZQX SHALL REMAIN SOUTH OF BIRD CTA. 06 JUL 11:00 2016 UNTIL 06 JUL 20:00 2016.

**BIRD/REYKJAVIK A0450/16 05JUL 1518Z**

– DUE TO STAFF SHORTAGE IN REYKJAVIK CENTRE, OPERATORS SHALL FILE TO COMPLY WITH THE FOLLOWING:

1. EASTBOUND TFC WILL NOT BE ACCEPTED FROM CZQX AND EGGX EXCEPT TRAFFIC WITH DESTINATION IN ICELAND, SCANDINAVIA, BALTIC STATES AND RUSSIA.
2. EASTBOUND TRAFFIC FROM AERODROMES EAST OF 105W WITH DESTINATIONS IN THE MIDDLE EAST SHALL REMAIN CLEAR OF BIRD CTA.

OPERATORS ARE URGED TO KEEP REQUESTS FOR LEVEL AND SPEED AMENDMENTS WITHIN BIRD CTA TO A MINIMUM.

FOR FURTHER INFORMATION CALL REYKJAVIK SHIFT  
MANAGER +354 424 4141. 06 JUL 02:00 2016 UNTIL 06 JUL 08:00 2016.

**BIRD/REYKJAVIK A0452/16 05JUL 2146Z**

(NOTAMR A0451/16) - DUE TO STAFF SHORTAGE IN REYKJAVIK OACC WESTBOUND  
TFC PLANNING TO ENTER BIRD FROM ENSV VIA GUNPA,  
VALDI, IPTON, INGAL, ISVIG AND EGPX VIA LIRKI, GONUT,  
OLKER, MATIK AND RATSU AND THEN PROCEEDING INTO EGGX  
OR CZQX SHALL REMAIN SOUTH OF BIRD CTA. 06 JUL 11:00 2016 UNTIL 06 JUL 20:00 2016.

---

## Midweek Briefing 18MAY: Brazil Airspace changes for Olympics, Increase in Fake Nav Charges

Cynthia Claros  
21 September, 2016

<b>INTERNATIONAL BULLETIN</b>	<b>ISSUED BY FLIGHT SERVICE BUREAU</b>
	SITA HNLFSXH AKLFSXH AFTN KMCOXAAL EMAIL INTL.DESK@FSBUREAU.ORG



Date: Mon, 16 May 2016 07:35:54 -0700  
From: asistent ([lina.kurachenko@eurocontrol.no](mailto:lina.kurachenko@eurocontrol.no))  
Subject: Remittance eurocontrol slip

The Manager Accounts Payable Controller,

Eurocontrol demands for swift confirmation and proof of settlement of I  
EUROCONTROL. The invoices are with regards to Air navigation, En  
February and March 2016 invoices. We kindly request that you forward  
updates, and also to enable us updates all records in preparation for th  
reconciliation purpose.

We also wish to use this medium to inform you of the change in our ac  
the accounts stated on the invoice send to you due to the logistics pro  
forwarded to your notification as soon as possible, preceding to the su  
plead that you bear with us.

Thanks once again for your understanding and cooperation.

Thank you and best regards,

Lina Kurachenko  
COLLECTION OF CHARGES  
CRCO/CAT/ACCOUNTING  
EUROCONTROL-CRCC-UNIT.  
Rue de la Fusee 96  
1130

**Brazil Airspace changes for Olympics 18MAY** A number of airspace changes, and specific procedures for aircrew and ATC, have been created for Brazil in advance of the 2016 Olympic Games, which start on 05AUG. Read the article.

**Increase in Fake Nav Charges 18MAY** We've seen an increasing variety of bogus emails, that at first glance look like they are from Eurocontrol - but aren't. It's a concern: instead of sending your Nav Fees payment to Eurocontrol, you've actually sent it to a suburb of Lagos. Read the article.

---

**LFZZ/France** A French national call to strike is planned for 19MAY. Several public service unions have

echoed this call, including USAC-CGT for the DGAC. Please check the **NOP Portal** for the latest advisories.

**BIKF/Keflavik** Closures here and in BIRD/Reykjavik Oceanic airspace continue due to ATC Industrial action. Plan all flights to or within Icelandic airspace with caution. Iceland strike continues ... [Read Full Article](#).

**UIBB/Bratsk** has multiple new restrictions of ATC hours, RFF categories, and availability as alternate. Check A1923.

**PLCH/Christmas Island** will not supply JetA1 to non-scheduled flights, shortage until 26MAY. Landing permits are now required at least three days prior, and can be obtained via email at [cal02@mcttd.gov.ki](mailto:cal02@mcttd.gov.ki).

**EGLL/London Heathrow** will have an emergency exercise on 21MAY. If you see smoke or fire, it's most likely from there.

**N90/New York Airports** The FAA has withdrawn its proposed slot program which was extremely restrictive to non-scheduled operators. The FAA is withdrawing the **NPRM** to allow for further evaluation of these changes.

**KZZZ/United States** the FAA has updated it's list of **Critical DME's**. When these critical DME's are not available, it results in navigation service which is not sufficient for DME/DME/IRU operations along all or portions of a specific route or procedure. This is mainly an issue for Non-GPS equipped aircraft.

**CYUL/Montreal** has added a new International wing to the terminal as of 12MAY. The 65,620-square-foot expansion includes 8,611 square feet of additional retail space and six new boarding gates.

**SOOO/Cayenne FIR** issued NOTAM A0141/16 advising that the due to the SOCA CPDLC system trail, datalink connection may be lost. If unable to communicate by CPDLC then they advise to contact SOOO or SOCA VIA normal HF frequencies until 24JUN.

**North Atlantic** The London Met Office has issued it's **North Atlantic tropical storm seasonal forecast for 2016**.

**EZZZ/Europe** an annual large scale military exercise called "NATO Tiger Meet 2016" will be held from 16MAY to 27MAY in Spain. NOTAMs LE D1109/16 and D1272/16 have been issued along with a **map** detailing the area.

**LOWW/Vienna** has introduced 2 new RNP(AR) approaches RNAV (RNP) N RWY 16 and RNAV (RNP) E RWY 16. The Austrian AIS has issued **AIC A 5/16** covering the additions.

**LKPR/Prague** officials stated that they are working to assess the security at LKPR as they begin to implement the government's security recommendations. The measures, including face recognition technology, should be fully introduced within 12 to 18 months. Security has increased in response to the attacks in Brussels. Heavily armed soldiers continue to patrol LKPR.

**Arabian Peninsula** on 11MAY the Centre for Disease Control CDC issued an Alert Level 2 for MERS in the Arabian Peninsula.

**NZZC/Christchurch FIR** has issued NOTAM B2740/16 advising of recent activity for Volcano Mount Ruapehu. No current eruption but concern for increased likelihood of eruption exists.

**FHSH/St. Helena** has received its certification to begin commercial flight operations. An 1850 meter runway, a 3500 sq m airport terminal and other associated infrastructure, such as access roads, bulk fuel installations, water supplies and aerodrome ground lighting have been installed and are ready for operational use. However – concerns remain about windshear which is currently delaying acceptance of traffic.

**HKZZ/Kenya** The U.S filed an advisory with IATA stating that Kenyan airspace is unsafe due to a possibility of extremist or militant activity within Kenyan airspace as Al Shabaab has demonstrated the capability and intent to conduct terrorist attacks in Kenya targeting, among others, US/Western interests including aviation interests.

**EGPX/Scottish** Scottish Control is changing to a new ATC system this week: expect airspace restrictions. ATC advises a fundamental level of change in the method of operation within Scottish Upper Airspace will result. There is no change to the Oceanic Operation, and Domestic CPDLC will be available at all times from 17MAY.

**CYMM/Fort McMurray, Canada** remains closed due to Forest Fires; only emergency and evacuation flights are allowed.

**EHZZ/Amsterdam FIR** The Netherlands has revised procedures for obtaining Special Permission for overflying or landing aircraft on delivery, ferry flights, or other circumstances where a normal Certificate of Airworthiness is not in place. Read the article. Questions should be directed to our ferry team at [service@fsbureau.org](mailto:service@fsbureau.org).

View the full International Bulletin 18MAY2016

---

## Earthquakes: Japan & Ecuador, South America - New Timezone: Midweek Briefing 20APR

Cynthia Claros  
21 September, 2016

<b>INTERNATIONAL BULLETIN</b>	<b>ISSUED BY FLIGHT SERVICE BUREAU</b>
	SITA HNLFSXH AKLFSXH AFTN KMCOXAAL EMAIL <a href="mailto:INTL.DESK@FSBUREAU.ORG">INTL.DESK@FSBUREAU.ORG</a>



**Earthquakes: Japan, Ecuador** 20APR Two large earthquakes struck Japan and Ecuador in the past week, with a longer term impact on International Flight Ops. RJFT/Kumamoto and SEMT/Manta are both closed



UFN. Read full article.

**South America - New Timezone** 20APR In an unusual move, a new time zone will take effect in South America from the 1st of May. As part of a measure to battle an energy crisis in Venezuela, the entire country will change timezone from UTC -4h30 to UTC-5, to ensure more daylight in the evening when energy consumption peaks. **Read full article.**

---

**EGLL/London Heathrow** An A320 was struck by a drone on approach to LHR on 17APR. This is the first incident of its kind, though there have been many close calls to date.

**FMZZ/Madagascar** Cyclone Fanatola is currently north of Madagascar, the equivalent of a Category 5 Hurricane. It is expected to miss the island nation and the main airport of FMMI but the close proximity of the cyclone to the island may cause flight disruptions.

**BIKF/Keflavik** beginning 01MAY, BIKF will be imposing a new Terminal Navigation Charge. This charge is to be applied to all flights arriving at BIKF. The airport authority has issued an Air Navigation Chargedocument to assist in determining the impact of the new fee.

**LTZZ/Turkey.** We've been alerted to a change in Overflight Requirements – aircraft with M- and VP-registrations, and any other countries without a bilateral agreement, require an Overflight Permit. See the new Turkey Lowdown for full information.

**TIZZ/U.S. Virgin Islands** authorities, assisted by the FBI, began investigating reports of a plot to attack airports on the Virgin Islands, notably the Terrance B. Lettsome International Airport (Beef Island Airport). The U.S. Coast Guard first received information of a terrorist attack plot circulating on social media. The threat focused on Terrance B. Lettsome International Airport but also mentioned airports on St. Croix, St. Thomas and St. John as possible targets. No information is available on what level of credibility authorities attach to these threats.

**EBBR/Brussels** A recent report from the Brussels Airport CEO has stated that EBBR will be 100% operational by the beginning of June.

**EDNY/Friedrichshafen** will be hosting the AERO 2016 exhibition from 20APR to 23APR. There is an expected increase in IFR traffic to the airport during the event. Please refer to NOTAM C0933/16 for further details.

**LCCC/Nicosia FIR** due to a Russian Navy Exercise and rocket test firings in the Mediterranean Sea, there are NOTAM'd route closures for W/UW17 from BALMA-NIKAS, R/UR78 and M/UM978 daily from 0500-1500Z on 21APR and 22APR. The NOTAMS covering the closure are A0308/16 and A0310/16.

**SBZZ/Brazil** The Canadian government has issued a helpful health notice for crew/passengers planning to travel to Brazil for the upcoming Olympic Games, which has advice on how to contend with the Zika virus.

**MGZZ/Guatemala** Volcano Santa Maria has had some recent high level ash dispersed into the atmosphere up to FL250. The Washington VAAC provides advisories and forecasts.

**ZBAA/Beijing** is not available for Non-Emergency diversions or planned as an alternate due to gate/stand shortage daily from 13-23Z daily until 28OCT16.

**VIZZ/India** The Government of India has introduced the e-TOURIST VISA (eTV) scheme for UK nationals travelling to India. All guests travelling under this scheme must carry a printed copy of the approved eTV

for verification at the check-in counter prior to boarding.

**WSZZ/Singapore** the CAAS has issued 2 AIP supplements outlining the upcoming military exercise Bersama Shield 16. AIP SUP 40-16 covers Kuala Lumpur and Singapore FIR airspace restrictions and AIP SUP 41-16 covers additional Singapore FIR airspace restrictions. The exercise will be running from 21APR to 28APR.

**HSZZ/South Sudan** The UK FCO has issued a travel warning against travel to South Sudan and in particular to Juba due to the return of the First Vice President as “tensions and disturbances” may increase across the country in the coming weeks.

**FNZZ/Angola** The CDC has upgraded the yellow fever in Luanda Province to an Alert Level 2. The government of Angola requires all travellers older than 9 months to show proof of yellow fever vaccination on arrival. In addition, CDC recommends that all travellers aged 9 months or older be vaccinated against yellow fever.

**DNMM/Lagos** a new protocol issued by customs and immigration officials is causing congestion in the arrival hall. There are 2 forms being given to passengers only once they enter the arrival processing area. Please ask your handler if these forms can be provided ahead of time.

View the full International Bulletin for 20APR2016

---

## Cheapest Jet fuel on the Atlantic? \$1.15 a gallon

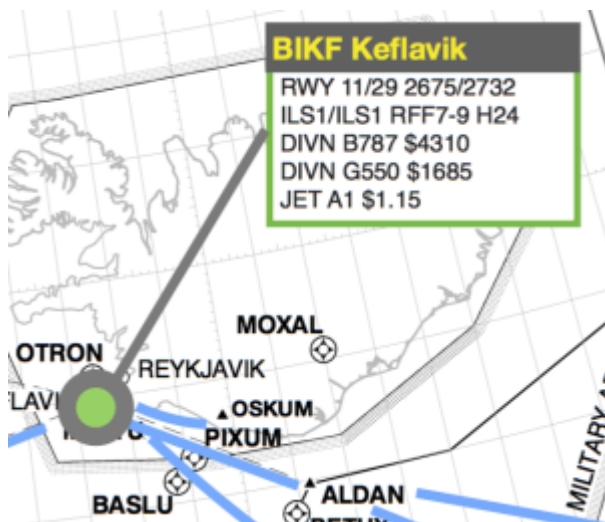
Declan Selleck  
21 September, 2016



The cost of a gallon of Jet A1 has been rather unstable lately. Over the last couple of years, we've produced several versions of our **North Atlantic Plotting Chart**, and as we've done so, the price of Jet A1 has dropped each time across the Atlantic seaboard.



So, where is cheapest? **Answer: Keflavik.** \$1.15 for a gallon of Jet A1 at the best available commercial airline rate. Now, that was six weeks back or so, when we did the research for the chart, and prices have been rising since (tracking the Oil price pretty well).



Next best on the list is Shannon, Ireland – \$1.37 USD/USG, thanks to the Shannon Free Zone, which strips out most of the taxes that the EU levies as standard.

Next question, then: most expensive? **Narsarsuaq, at \$5.65 for a gallon.** Why so much more? Primary reason: getting the fuel to BGBW is an awful lot harder than getting it to BIKF. The rest is down to the difference in government tax policy.

Fuel price is of course not the only tech stop or diversion consideration on the North Atlantic, but given that security, safety, and service quality is pretty much equal across the entire NAT region, it's an important factor – along with the cost of handling.

If you look at the snapshot above, you can see that your G550 will cost around \$1685 including Airport Fees; taking a B787 to KEF will run around \$4300 all in.

The **North Atlantic Plotting Chart** has all this information for all the common North Atlantic ETOPS/Diversion Fields – namely: CYYT/St Johns, CYQX/Gander, CYJT/Stephenville, CYYR/Goose Bay, CYFB/Iqaluit, BGSF/Sondrestrom, BGBW/Narsaraug, BIKF/Keflavik, EGPF/Glasgow Intl, EGAA/Belfast, EINN/Shannon, and LPLA/Lajes.

[Download NAT Plotting Chart](#)