

Nepal's New International Airport

OPSGROUP Team

26 April, 2022



A second international airport has officially opened in Nepal. Here is the lowdown on it.

Introduce us.

It is called **VNBW/Gautam Buddha**, and it is located in Bhairahawa, approximately 250km west of VNKT/Tribhuvan International Airport in Kathmandu.

The airport was officially inaugurated on **April 22, 2022** but won't see any international flights until May 16. It isn't entirely new – an old airport was located here, and the original runway now serves as a taxiway.



The new airport lies on the border with India.

What's the lowdown on it?

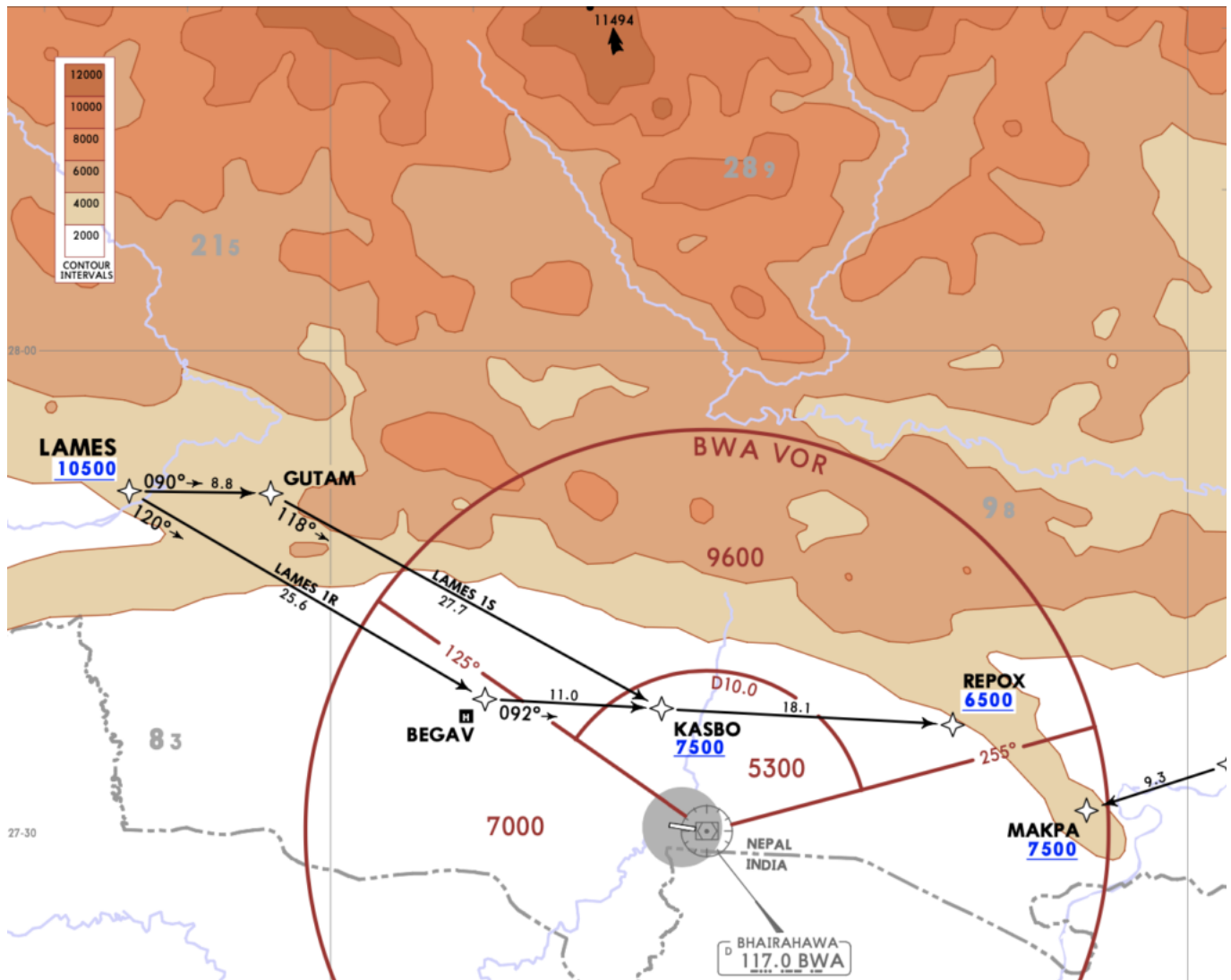
The airport has a **9834' (3000m) runway** with a RNP approach to 10 and 28, and a VOR approach to runway 10 as well.

You're going to want to watch out for the high terrain which lies to the north of the airport. **The MSA is 9600'** in the northerly sector, and 7000' for the rest, all of which makes for some altitude restrictions on the way in and out.

The airport itself is relatively small - just a few stands of the international apron and a few on the domestic apron.

The airport is RFF 5.

It isn't a 24 hour airport though. The tower is only operational daily 0600-1845 local time (0015-1300z) and the general operational hours are Sunday-Thursday 1000-1700 local, 1000-1600 Wednesday and Friday 1000-1500.



Watch out for some serious terrain nearby.

Who can we talk to there?

We have a few contact details for you. Starting with the **general airport info**:

- Telephone: +977 71 507 110
- Email: gautambuddha_cao@caanepal.org.np
- Tower: 122.5
- AFTN: VNBWYDYX

There is an **agent based in Singapore** who can offer some support if you want to operate in:

- Telephone: +65 6592 7623
- Email: ops@aerogon.aero

Fuel is expected to be supplied by AEG, and they **only have Jet A1**.

Want some more info?

The AIP section for the aerodrome can be found here. It's valid today, but might not be tomorrow so don't use for operational purposes.

And they are building more...

Pokhara International Airport is expected to open later in 2022, offering connections to neighbouring countries whilst Nijgadhi International Airport is expected to open sometime in 2025.

Midweek Briefing 08JUN: Unsafe Airspace, New China ADIZ

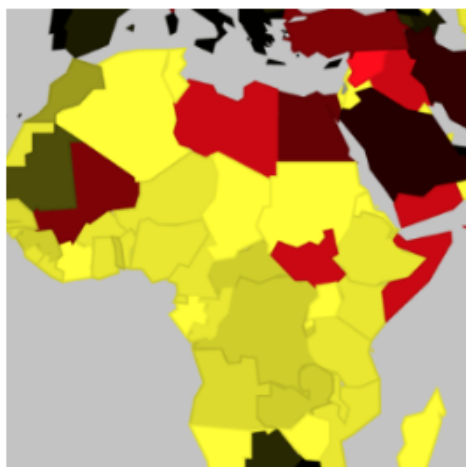
Cynthia Claros
26 April, 2022

INTERNATIONAL BULLETIN

ISSUED BY FLIGHT SERVICE BUREAU

SITA HNLFSXH AKLFSXH AFTN KMCOXAAL

EMAIL INTL.DESK@FSBUREAU.ORG



Unsafe Airspace - new summary issued 08JUN Today Flight Service Bureau published International Ops Notice 02/16 - "Unsafe Airspace".

New China ADIZ - South China Sea 08JUN There have been several media reports this week that China is preparing to set up a new ADIZ in the South China Sea. Read the article.

KCLT/Charlotte New SIDS and STARS for aircraft arriving and departing to the Northeast have been added to CLT as of May 31. Also, construction of a new ATC tower has also broken ground, the new tower will be equipped with NextGen systems that include STARS (Standard Terminal Automation Replacement System), ADS-B (Automatic Dependant Surveillance - Broadcast) and AEFS (Advanced Electronic Flight Strip System).

CZZZ/Western Canada has been experiencing fuel shortages due to recent wildfires in the oil patch. Please check with local handlers for any fuel constraints.

KZMA/Miami FIR NASA is planning on launching a Delta IV rocket on 09JUN. Please check KZMA FIR NOTAMS for restrictions.

KZZZ/USA Tropical Storm Colin has passed Florida, Georgia, South Carolina and North Carolina before moving out over the Atlantic.

CYQY/Sydney, Nova Scotia has added 2 fire trucks and increased staffing levels to provide ARFF CAT 6 or 7, time of day pending. CYQY has issued NOTAM 1A3425/16 covering those hours.

LLZZ/Israel has signed an agreement with Eurocontrol and will allow the country and it's users to benefit from the services that Eurocontrol provides. This is excellent news for filing out of LLBG and transiting to or over Europe as this will help streamline the process significantly and coordination will only have to be with Eurocontrol for any changes.

RCTP/Taipei has resumed operations on June 3 after operations were suspended due to flash flooding. The airport has also lost power numerous times due to the unstable power supply following days of severe flooding. While the power cuts rendered the terminal's air conditioning system inoperable, the airport experienced only minor delays.

VNKT/Kathmandu has been experiencing problems with the VHF ATC equipment. Aircraft on approach and Area Control freqs may experience increased squelch and at times leaving ATC without comms.

HSZZ/Sudan has warned it will shoot down any aircraft that infiltrates it's airspace that has not obtained the proper permission and/or following proper procedures. If you need to transit this airspace please make sure you have all the required documentation.

FHSH/St Helena has reportedly delayed the airport opening indefinitely, due to safety concerns – severe turbulence and windshear were commonplace during testing trials by a B737-800.

China Beijing – The Mainland Affairs Council (MAC), which supervises relations across the Taiwan Strait, on Friday issued a yellow travel alert for Beijing after the first H7N9 flu infection case for this year was confirmed in the Chinese capital.

Malaysia Malaysian officials fired several officials on charges connected to a security breach at Kuala Lumpur International Airport (WMKK/KUL). Security officials stated that airport security officials collaborated with human trafficking syndicates to bypass the airport's passport verification system. The investigation discovered that, since 2010, airport officials purposely disrupted the immigration system at certain times of the day on several occasions. Malaysian officials will publish a report with the full findings.

Angola The World Health Organization (WHO) reported on 27 May 2016 that 301 people have died in Angola's yellow fever outbreak, which began in December 2015. The number of suspected cases is now 2,536. The outbreak began in Luanda and has since spread to areas throughout the country, particularly along the coast and in the central regions, despite a large-scale vaccination program. Cases linked to the Angolan outbreak have also been reported in the Democratic Republic of Congo (DRC), Kenya and China.

Jamaica is now charging a \$35 US departure tax for all air passengers.

Uzbekistan British FCO cautions when travelling with medicines; you can be detained on arrival if you're in possession of certain medicines, including codeine; you should always carry a doctor's prescription with you.

France – the Air France pilots' union announced a work stoppage for 11-14 June, coinciding with the first week of the Euro 2016 soccer championship. The strike has been planned in protest over pay disputes, and the union has stated that it may observe further strikes. Further details are likely to emerge, as the situation is developing.

Yemen On 28MAY, approximately 20 gunmen stormed Aden International Airport (OYAA/ADE). A 90-minute gunfight followed the attack, during which one civilian was killed by a stray bullet. Authorities regained control of the situation and detained the gunmen's suspected leader.

Nepal A nationwide general strike is planned on Thursday 09JUN2016 across the country. Protest can occur at short notice anywhere. Stay cautious and stay away from these areas.

View the full International Bulletin 08JUN2016

MHTG 'Interesting Approaches' to end,

Greeks or Italians? ATC strikes:

Cynthia Claros

26 April, 2022

**INTERNATIONAL
BULLETIN**

ISSUED BY FLIGHT SERVICE BUREAU

SITA HNLFSXH AKLFSXH AFTN KMCOXAAL
EMAIL INTL.DESK@FSBUREAU.ORG



MHTG 'Interesting Approaches' to end 06APR MHTG/Tegucigalpa Dangerous approaches at MHTG will be consigned to history, as a new airport was finally confirmed at the weekend by the Honduran government. **Read the full article.**

Greeks or Italians? ATC strikes this week 06APR There will be an ATC strike this week in Europe, maybe by Greece, maybe by Italy, maybe by both. These strikes are often cancelled shortly before starting, but at this pre-planning stage, it seems likely to go ahead. **Read the full article.**

EBBR/Brussels has now reopened but operations are still very restricted. The airport is not expected to be fully operational until June or July by current estimates. The airport authority has instituted new security measures that include a requirement for passengers to arrive 3 hours prior to their departure time. The terminal is still closed to busses and trains. Slots must still be requested from the Brussels Airport Authority if you intend to operate in or out of EBBR.

ZKPY/Pyongyang FIR Many reports that North Korea is jamming GPS signals, also reported by South Korea RKRR NOTAM A0450/16. Signals have been reported as unreliable or lost when operating in or near to North Korean airspace. Exercise caution if you rely on GPS in those areas. **Read our DPRK Overflight Risk article** from a few weeks ago.

LIZZ/Italy Eurocontrol has confirmed an Italian ATC strike is set for April 9th. NOTAMS A2062/16A2 and A2063/16A2 have been issued covering the proposed strike.

MHTG/Tegucigalpa Dangerous approaches at MHTG will be consigned to history, as a new airport was finally confirmed at the weekend by the Honduran government. **Full article here.**

LFXX/France an Operational Trial of CPDLC Services in French Airspace of Reims (LFEE), Paris (LFFF) and Marseille (LFMM) ACC will be in effect from 05APR to 11APR.

EZZZ/Europe The U.S. State Department along with numerous other countries have issued a Europe wide travel warning in response to the attack in Brussels. While extra vigilance should be exercised it is also a very generic response to a threat that has yet to be fully understood from a commercial aviation perspective. If you would like to be kept up to date on specific travel alerts from the U.S. State Department you can sign up through their STEP program.

EHAM/Amsterdam reports of near misses with drones have recently been reported by crews. The location of the near misses was on the approach path but no specific runway was mentioned.

KEWR/Newark The FAA will be increasing the number of available slots to EWR, available at the end of October. The change is in response to the improved efficiency of the airport and the ability to increase the ATC arrival rate.

FAA/United States has issued Advisory Circular 00-30C. It describes the various types of CAT (Clear Air Turbulence) along with avoidance techniques and possible future forecast systems for helping Dispatchers and Pilots in the planning stages.

KZZZ/USA Check your passport! Effective 01APR16, if you're travelling to the United States under the Visa Waiver Program, you will also need to have a valid **e-Passport** along with your ESTA.

CZVR/Vancouver ACC will begin to use ADS-C on 18APR In their Oceanic sectors, for both alerting service (SAR) and improved ATC separation purposes.

UDDD/Yerevan FIR Due to Air Defence activity ATC route segments with Yerevan FIR Crossing FIR boundary points MATAL, ELSIV, PEMAN and VETEN between Yerevan FIR and Baku FIR are not available.

UBBA/Baku FIR Entry/Exit points VETEN, PEMAN, ELSIV, MATAL are closed.
Baku FIR Entry/Exit points BARAD, DISKA closed from GND to FL305.
NOTAMS A0030/16 and A0032/16 have been issued as well.

UHSS/Yuzhno will be closed daily 10APR-14MAY between the hours of 12-21Z.

OMZZ/United Arab Emirates will begin charging a \$9.50 USD Passenger Tax effective 30JUN, to be imposed on all travellers over the age of 2 through all airports including those only transiting the UAE. A driving factor in this new charge appears to be low oil prices affecting the Gulf States.

UZZZ/Russia has stated that aviation authorities are intensifying its ramp inspections of all aircraft (especially foreign aircraft, we guess) in the wake of the Rostov accident.

FZZZ/Nigeria The Nigerian National Petroleum Corporation has stated that steps are currently being taken to end the countries fuel shortage, but may take upwards of 2 months. We suggest to check with local handlers for the availability aviation fuel supply until the issue is resolved.

VNKT/Kathmandu We have received some reports that VNKT ATC weather reports are inaccurate, especially regarding visibility. Any feedback please let us know.

VIAR/Amritsar has suspended all night operations for 1 year due to the planned reconstruction of the airports runways.

View the full International Bulletin for 06APR2016

Pavlof Eruption wreaking havoc, Brussels Airport remains closed: Midweek Briefing

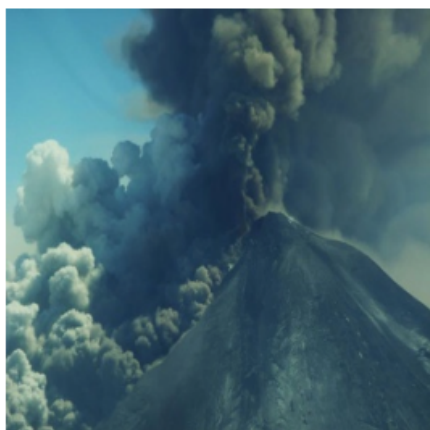
30MAR

Cynthia Claros
26 April, 2022

**INTERNATIONAL
BULLETIN**

ISSUED BY FLIGHT SERVICE BUREAU

SITA HNLFSXH AKLFSXH AFTN KMCOXAAL
EMAIL INTL.DESK@FSBUREAU.ORG



Pavlof Eruption wreaking havoc 30MAR16 Volcano Pavlof erupted on Sunday and is currently on aviation colour code 'RED'. It has caused havoc for North Pacific, Alaskan and Northern Canadian operations. The latest predictions have the ash upwards of FL400 and extending over Northern Alaska and Canada. You can find the latest information through the Alaskan VAAC.

Brussels Airport remains closed 30MAR16 EBBR is still closed with the possibility of opening later this week. Currently all commercial flights are still prohibited from operating into EBBR. Only ferry, emergency, SAR, State, general aviation and cargo flights are authorized with a slot that can be coordinated through the Belgium Slot Coordination website.

EZZZ/Europe The U.S. State Department along with numerous other countries have issued a Europe wide travel warning in response to the attack in Brussels. While extra vigilance should be exercised it is also a very generic response to a threat that has yet to fully understood from a commercial aviation perspective. If you would like to be kept up to date on specific travel alerts from the U.S. State Department you can sign up through their STEP program.

FAA/United States there have been 583 reported hazards from Aug 22/2015-Jan 31/2015 between aircraft and Drones. None of these incidents have caused any collisions or damage but extra vigilance must be exercised until the FAA can regulate the use of these drones in the terminal areas.

RPHI/Manila has issued an advisory for aircraft operating in the vicinity of the Bulusan Volcano and the Kanlaon Volcano due to an alert level 1 of activity. Flights operating in the vicinity are advised to avoid flying close to the summit.

LFXX/France a general strike has been declared for March 31st. Possible impact to airline operations. Please make sure you check with Eurocontrol or FIR NOTAMs for further restrictions.

FXXX/Nigeria The NNPC or Nigerian National Petroleum Corporation has stated that steps are currently being taken to end the countries fuel shortage but may take upwards up 2 months. Please check with local handlers for the availability aviation fuel supply until the issue is resolved.

LXXX/Turkey has issued a nationwide terror alert and the Israeli Counter-Terrorism Bureau has advised for all of it's citizens to leave the country. Extra vigilance should be exercised if operating to and from Turkey for the foreseeable future.

UXXX/Russia has stated that aviation authorities are intensifying it's inspections of aircraft from Russian and International budget carriers in wake of the Rostov-on-Don accident.

DGAC/Ghana FIR issued NOTAM A0128/16 due to VHF freq 130.9 being not reliable for all Oceanic traffic entering ACCRA FIR from the South East due to maintenance. All traffic must contact ACCRA on HF 8903KHZ or logon to ADS-C/CPDC "DGAC" until positive VHF contact is established.

VNKT/Katmandu There have been a few reports that the Tower at VNKT has been reporting erroneous weather to pilots. One example of such a report was "Tower informed us that there was some 3 km of visibility this morning but it to be less than 1.5 km while Kathmandu was engulfed by haze". If you encounter any issues while operating into VNKT please send us a note to bulletins@fsbureau.org.

VIAR/Amritsar has suspended all night operations for 1 year due to the planned reconstruction of the airports runways.

VTBD/Bangkok Officials approved an expansion that will allow for more aircraft, passengers and vehicle parking. The plan also includes provisions to cut landing fees during off-peak hours at VTBD and VTBS in an effort to increase usage of both airports. The project includes plans to extend the runway, add office buildings, and create additional parking zones for aircraft. The expansion is expected to be completed in 2025.

Angola The Ministry of Health in Angola has reported an ongoing outbreak of yellow fever in Luanda Province. The government of Angola requires all travelers older than 9 months to show proof of yellow fever vaccination on arrival. The CDC has a 'Watch Level 1, Practice Usual Precautions' advisory in place.

FAA/United States has issued Advisory Circular 00-30C. It describes the various types of CAT (Clear Air Turbulence) along with avoidance techniques and possible future forecast systems for helping Dispatchers and Pilots in the planning stages for proactive flight planning.

View the full International Bulletin for 30MAR2016