

# International Bulletin: Hong Kong pain in the ass, Haiti relief operations

Cynthia Claros  
20 October, 2016

<b>INTERNATIONAL BULLETIN</b>	<b>ISSUED BY FLIGHT SERVICE BUREAU</b>
	SITA HNLFSXH AKLFSXH AFTN KMCXAAL EMAIL INTL.DESK@FSBUREAU.ORG



**Hong Kong is a pain in the ass - it's official** 20OCT Authorities in Hong Kong confirmed yesterday that the airport is a giant pain, especially for non-scheduled operators. Lining up slots, parking, permits and handling is extremely difficult. End result: a mountain of frustration. Read the article.

**Haiti relief operations - and Airbus Flight 101** 20OCT After Hurricane Matthew last week, MTPP/Port-au-Prince (Toussaint Louverture) became a central focus in relief efforts for Haiti. **OpsGroup member Airbus** operated an amazing relief flight from Lyon. Read the article.

---

**VTZZ/Thailand** is in a period of mourning following the death of His Majesty, King Bhumibol on 13 October. This is a time of deep sorrow for Thai people – refrain from any behaviour that may be interpreted as festive, disrespectful or disorderly. Abide by local laws and respect Thai customs. There may be some disruption of commercial and public services during the mourning period, especially during the first 30 days (until 13 November). Tourist attractions are open with the exception of Wat Pra Kaew (Temple of the Emerald Buddha) and the Grand Palace in Bangkok. Expect traffic disruptions and heightened security around these areas as people pay their respects to the late King.

**EBBR/Brussels** All non-scheduled flights destined to EBBR are allowed only after special permission by Airport Authority before start of flight. Contact +32 2 7536900 or inspect@brusselsairport.be.

**DTZZ/Tunisia** extended the state of emergency on 18OCT, set to expire, by three months. The state of emergency went into effect following a series of terrorist attacks in 2015 and has been extended multiple times.

**ORBB/Baghdad FIR** Traffic entering from Baghdad FIR (ORBB) to Ankara FIR (LTAA) shall file their FPL as follows: NINVA-OTKEP-SRT at FL320 and above. NOTAM A4572/16 refers.

**Solomon Islands** There has been a confirmed outbreak of dengue fever in the capital city, Honiara; you should follow the advice of the local authorities and take steps to avoid being bitten by mosquitoes; you should take out comprehensive travel and medical insurance before travelling to the Solomon Islands

**TXKF/Bermuda** Due to maintenance, the Bermuda Radar system will be out of service on Friday. Recommended reroute to avoid airspace. New York Center overflight procedures will be in effect. Routes have been developed to provide limited non-radar service within the airspace. All departures from Bermuda will be held down at FL310.

**OJAI/Amman, Jordan** Runway 26L/08R will be closed for urgent pavement maintenance on these days in November: 01,08,15,22,29: from 0930-1330Z. The airport will not be available for either normal operations or emergency divers during the closure period.

**OEZZ/Saudi Arabia** From 8 to 10 October there were several missile attacks reported near the Saudi / Yemeni border and the southern Red Sea.

**ZZZZ/Worldwide** Regulatory and voluntary bans on Samsung Galaxy Note7 smartphones is spreading as airlines and airport authorities around the world are announcing bans or restricted usage on the device, which has been withdrawn by Samsung after some devices caught fire. Ban notices are being issued primarily through airline online check-in pages, as well as via public announcements in airport terminals and onboard aircraft. The US Department of Transportation (DOT) was first to issue a total ban on taking the device on board, as a passenger or as air cargo, when it gave an emergency order Oct. 15 with FAA. The devices are being banned because of fire concerns, and the fallout following an incident involving a smoking smartphone on board a Southwest Airlines aircraft in Louisville, Kentucky on Oct. 5.

**YZZZ/Australia** will not be implementing the changes in the ICAO PANS-ATM (Doc 4444), as they say they haven't had enough time to work on the safety case - ie. figuring out if these changes are dangerous in any way. In short, they won't be saying "Climb via SID" or "Climb via STAR", which are the new phraseologies.

**TTZP/Piarco** wins the award for most confusing AIC of the week, namely AIC03/16 issued on 13OCT. Titled "RVSM Implementation", it appears that Trinidad is finally implementing RVSM in their airspace. But wait, they did that in 2005. So what's new in this AIC? It's a mystery. Take a look and see if you can spot it.

**KLAX/Los Angeles** 3 out of the 4 runways at KLAX have now been renovated. Runway 6R/24L reopened on 16OCT after renovations. Improvements to the fourth and final runway, 07L/25R, will begin OCT22 and continue until June 2017. This last runway will be partially closed until January, and then closed completely to allow for more extensive work to be done

**FSIA/Seychelles** Runway will be closed on Thursday 20 and 27 Oct between 1815-0245z and Friday 21 and 28 Oct between 1900-0215z. Can be opened in cases of emergency.

**UHPP/Petropavlovsk** Eruption in progress at Klyuchevskoy volcano (N5603E16038) near UHPP. Ash cloud reported at 0720z on 17 Oct from ground level up to FL300.

**VVZZ/Vietnam** Typhoon Sarika is forecast to bring hazardous sea and weather conditions to parts of northern Vietnam from around 19 October 2016; heavy rainfall could lead to flooding and landslides

**KLAS/Las Vegas** Because of the next presidential debate that will be held in Las Vegas on October 19, 2016, intermittent road closures will affect access to McCarran International Airport (LAS) between 4 pm and 10 pm on that date. The recommended route to the airport from the east side of the valley is westbound Flamingo Road to southbound Paradise Road. The recommended route to the airport from the west side of the valley is eastbound Tropicana Avenue to southbound Paradise Road.

**OIIX/Tehran** FIR The minimum safe level on R462 between DENDA and METBI has been raised to FL140.

**KSFO/San Francisco** has a new ATC Tower operational since Sunday last, located between Terminals 1 and 2. Per the local report, it “offers controllers a 650-square-foot work area with unobstructed 235-degree views of the airport’s runways and taxiways”. Hopefully there’s not much going on in the other 125 degrees.

**OSZZ/Syria** Russia’s only aircraft carrier, Admiral Kuznetsov, is nearing the end of a work-up period outside the port of Murmansk before heading for the eastern Mediterranean, reportedly to begin air operations against targets in Syria.

**EGPK/Prestwick** will be closed from midnight to 0400Z on 21OCT, due to a planned ATC power outage. ATC reachable during outage at +447917 424603.

**RPZZ/Philippines** Typhoon Sarika recently passed through the island of Luzon as a category 4 storm. Transportation routes, power and telecommunications systems could be affected in some areas. Other services that may be affected in these areas include emergency and medical care, as well as water and food supplies. If travelling to affected areas, exercise caution, monitor local news and weather reports, and follow the advice of local authorities.

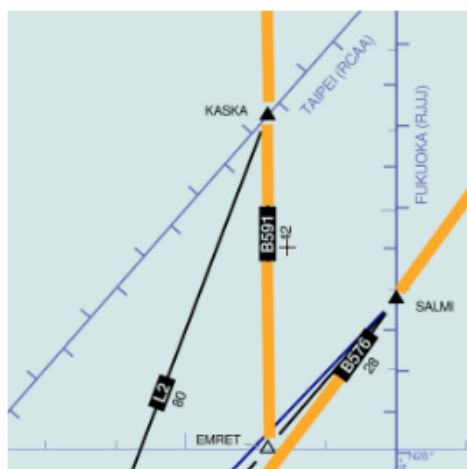
View full International Bulletin 20OCT2016

---

## Midweek Briefing: Taiwan ADS-B requirement, Costa Rica volcano

Cynthia Claros  
20 October, 2016

INTERNATIONAL BULLETIN	ISSUED BY FLIGHT SERVICE BUREAU
	SITA HNLFSXH AKLFSXH AFTN KMCOXAAL
	EMAIL INTL.DESK@FSBUREAU.ORG



**Taiwan ADS-B requirement** 21SEP Yesterday, Taiwan pushed the requirement for ADS-B above FL290 for all aircraft, back to 2020 – as a fast approaching deadline of December this year was looming. Read the article.

**Costa Rica volcano** 21SEP MROC/San Jose, Costa Rica has reopened after the eruption of the Turrialba

volcano on Monday. A risk of further closures continues. Read the article.

---

**OPZZ/Pakistan** Some airspace in the north of the country (Kashmir region) has been closed by the Pakistan CAA. Details are unclear but reports indicate Gilgit, Skardu and Chitral Airports are affected by the closure.

**BIKF/Keflavik** Departing KEF eastbound? Icelandic ATC would love you to file the following as a standard route: PIXUM PETUX ORTAV ODPEX, or 63N022W CELLO if you're planning to cross 10W at GOMUP or south of.

**EDDL/Dusseldorf** has closed 05L/23R for a couple of days to remove a WW2 bomb. Some delays at peak times may result.

**HLGT/Ghat, Libya** Three foreign nationals were kidnapped along the road that leads to Ghat Airport on 19SEP, located in the Fezzan province along the southwest border with Algeria. The foreigners were construction workers employed by the Italian-owned Conicos company to service Ghat Airport. There are numerous armed militia and terrorist groups active in the area and the foreigners were said to be operating under discretion due to the security risk.

**EDHL/Lubeck** will closed on Oct 4th for repairs - all day.

**ENGM/Oslo** will introduce new RNP AR approaches in November, available to all runways. Auth from Norwegian CAA is required to use them.

**FKKD/Douala** now requires PPR 72 hours prior arrival, for non-scheduled flights, due to upcoming space restrictions as a result of WIP. You can make requests directly to Airport admin at pce.douala@adcsa.aero.

**GBZZ/Gambia** In a change to procedure, Overflight Permits, and Landing Permits for traffic operating to GBYD/Banjul, are now issued by the Department of Flight Safety Standards at the GCAA.

**HCMM/Mogadishu** has issued a security reminder to operators: "OPERATORS SHOULD EXER EXTREME CTN AND FULLY ASSESS THE POTENTIAL FOR RISKS TO FLT SAFETY AND SECURITY WHEN PLANNING OR CONDUCTING OPS INTO MOGADISHU AIRPORT DUE TO LACK OF INFORMATION ON ARMED CONFLICT AND LACK OF AERONAUTICAL INFORMATION."

**FAZZ/South Africa** The CAA has updated its warnings for operators, with new guidance for two airspace blocks: that affected by the Syrian conflict - namely Baghdad, Damascus, and Tehran FIRs; and that affected by recent concerns over the Northern Sinai - their advice is to overfly at FL260 or higher.

**LMML/Malta** airshow coming up on 24-25 Sept, multiple restrictions, check before operating or filing as alternate.

**FZZZ/DRC Congo** Since September 19 large-scale demonstrations have been resulting in violent clashes between demonstrators and security forces in Kinshasa and elsewhere in the country. The situation is particularly tense in Kinshasa where violence has caused casualties. These demonstrations could continue over the next few days and the situation could further degenerate. The sole road to the Kinshasa airport could be blocked and some flights have been cancelled.

**OJZZ/Jordan** It's White Stork migration season, and Jordan has issued warnings for all of its airports, for crews to be mindful of the high chance of presence of large flocks of them on arrival and departure.

**SKED/Bogota** has some comms issues on north/south bound routes to Peru (Lima FIR); 10 minute separation is applied between aircraft on these routes until at least Sept 26th.

**KZZZ/USA** For some good reading, the FAA (thanks Andy for passing this on), have updated their Aviation Weather guidance doc. This is the first revision to the document since 1975.

**Input:** ATC, Pilots, Dispatchers: Any topical items that you think should be going out to the community? Let us know, and we'll get your message out there. [tellus@opsgroup.co](mailto:tellus@opsgroup.co).

[View full International Bulletin 21SEP2016](#)