

# Germany issue new warnings, Manila may not ban GA after all

Cynthia Claros  
25 January, 2017

**INTERNATIONAL  
BULLETIN**

**ISSUED BY FLIGHT SERVICE BUREAU**  
SITA HNLFSXH AKLFSXH AFTN KMCOXAAL  
EMAIL INTL.DESK@FSBUREAU.ORG



**Germany issues new warnings** 25JAN **Germany has issued fresh warnings** on the airspace of Egypt, South Sudan, and North Korea, in three separate Notams issued in the last week. We have updated the SafeAirspace.net country information pages with the specifics. [Read the article](#)

**Manila may not ban GA after all** 25JAN RPLL/Manila is not moving as quickly towards a complete ban of non-scheduled and General Aviation traffic as feared. This is good news for International Operators. [Read the article.](#)

---

**HEZZ/Egypt, HSZZ/South Sudan, ZKZZ/North Korea** Germany has issued fresh warnings on the airspace of Egypt, South Sudan, and North Korea, in three separate Notams issued in the last week. We have updated the SafeAirspace.net country information pages with the specifics.

**RPLL/Manila** is not moving as quickly towards a complete ban of non-scheduled and General Aviation traffic as feared. This is good news for International Operators. [Read the article.](#)

**NTAA/Tahiti** The airport is open again as of Monday morning local time, after closing due to flooding after torrential rains, but many taxiways remain flooded. Expect delays in handling and tech stops.

**KZZZ/USA** Announced yesterday and expected to come into force this week, is an immediate ban on US visas (and therefore US travel) for citizens from 7 countries: Iraq, Iran, Syria, Yemen, Sudan, Somalia and

Libya. This is distinct from the Visa Waiver Program ban in effect since January 2016.

**GBZZ/Gambia** FSB Risk Level changed from Level Three to “No Warnings” on Jan 24. New president has taken power. Parliament revoked State of Emergency. Situation calm.

**SBZZ/Brazil** In the last bulletin we had a headline about a Boeing 767 shot on approach in Brazil. A bullet was found lodged in the wing. Some updates to that story are here, and [safeairspace.net](http://safeairspace.net)'s Brazilpage is updated.

**VZZZ/Southeast Asia** Don't forget it's New Year in Asia this weekend. Travel-related delays and government office and business interruptions will peak 27 Jan to 01 Feb, and could last longer in Taiwan, Vietnam and China, where the holiday will be celebrated through 02 Feb.

**EDDB/Berlin Brandenburg** will now not open until 2018, as they found more problems with the fire system this week. This is a recurring story, which dates back to 2012. So, for the foreseeable, you're stuck with Tegel and Schoenefeld.

**LTFJ/Sabiha Gökçen (Istanbul)** Due to insufficient capacity at LTFJ, applications for individual non-scheduled flights will be refused, and private/charter flights can only be operated at “non-busy hours”.

**KBPI/Palm Beach** is going to see some new TFR restrictions due to the proximity of Donald Trump's Mar-a-Lago estate. If operating when he's down here, you'll have to depart from a gateway airport to PBI – those are TEB, HPN, IAD, MCO and FLL. NBAA has the details.

**LSGG/Geneva** EBACE is on from Monday, 22 May through Wednesday, 24 May 2017. Now would be a good time to get those slots booked if you're planning to head over.

**LFMN/Nice** has a new procedure where ATC will alert crews to windshear.

**MSLP/San Salvador**'s only runway 07/25 will be closed from 1600-1700 each day until Feb 3rd.

**VGHS/Dhaka** The UK Department for Transport (DfT) announced today that it recently carried out assessments of security at Dhaka International Airport. Following this, the DfT has assessed that security at Dhaka airport does not meet some international security requirements (they haven't said which).

**OMAD/Abu Dhabi (Al Bateen)** is hosting the International Defence Exhibition in February, so will not be available to IFR traffic daily between 0600-0800Z until Feb 23rd. There are also restrictions on using it as an alternate.

**DNAA/Abuja** The latest on the Abuja closure is that it will be completely closed to all traffic from March 8th – April 19th.

**SKCG/Cartagena**'s only runway 01/19 is closed daily 0530-1100Z until Feb 6th.

**NVZZ/Vanuatu** Health authorities have declared a dengue outbreak following a large increase in suspected cases in December 2016 and January 2017. Protect yourself against mosquito bites

**WSZZ/Singapore** is implementing the new ICAO SID/STAR phraseologies from March 2nd. Read AIP SUP 29/17.

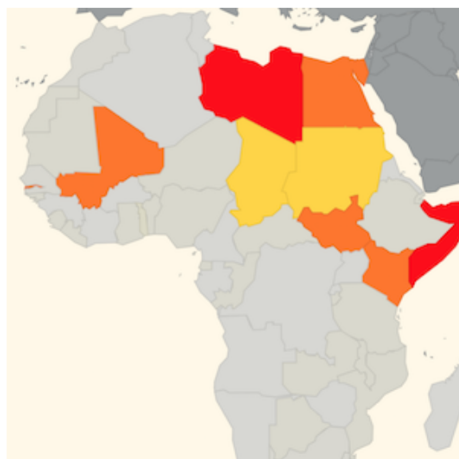
**LIRF/Rome Fiumicino** is working on 16R until March, so 25 will be used for depts and 16L for arrivals. This means delays, especially if you want 16L/34R for departure – they say up to a 60 minute taxi time.

**UKZZ/Ukraine** amended the military boundaries of its airspace on Monday Jan 23rd, identifying the Donbas conflict zone region as a separate area. More details here.

# International Bulletin: B767 shot on approach to Rio, Updated SafeAirspace Map

Cynthia Claros  
25 January, 2017

<b>INTERNATIONAL BULLETIN</b>	<b>ISSUED BY FLIGHT SERVICE BUREAU</b>
	SITA HNLFSXH AKLFSXH AFTN KMCOXAAL EMAIL INTL.DESK@FSBUREAU.ORG



## B767 Shot on approach to Rio

18JAN A B767-300 was fired on last night during approach to Runway 15 SBGL/Rio de Janeiro. One 7.62mm bullet lodged in the left wing. Read the article.

## Updated SafeAirspace Risk Map

18JAN We have updated SafeAirspace with information for Aircraft Operators on The Gambia, North Korea, Brazil, Ukraine, and Turkey.

---

**GBZZ/The Gambia** State of emergency declared on 17th January. Foreign citizens being evacuated. Banjul International Airport (GBYD/BJL) and land borders remain open, for now. More at [safeairspace.net/information/the-gambia](http://safeairspace.net/information/the-gambia).

**UKZZ/Ukraine** Flight Service Bureau has issued an updated summary for Ukraine's airspace. **There are two risk issues in Ukraine.** First: arms fire. Including MH17, multiple aircraft (the others all military) have been shot down since the beginning of the Donbass region war in 2014. The 10th ceasefire was declared in December 2016, but not holding. This risk is contained within the Dnipropetrovsk FIR –

**UKDV. The second issue** affects the Simferopol FIR which is **Disputed Airspace**. (Ukraine:UKFV, Russia:URFV). In March 2014, Russia annexed Crimea. The ATC Center is in Simferopol, Crimea, and is now run by Krymaeronavigatsiya. Russia claims the airspace. Ukraine refuses to recognise the change, and asks crews to talk to Ukrainian controllers in Dnipro/Odesa ACC instead of Simferopol ACC. Four routes are approved by EASA through the high seas portion of the airspace.

**KIAD/Washington** and area airports – guaranteed busy during the Presidential Inauguration this Friday, Jan 20. Updated restrictions here. Departure slots required for aircraft departing IAD between Friday, Jan. 20 and Sunday, Jan. 22. Departure slots can be obtained through an IAD FBO of choice (Ross Aviation or Signature Flight Support). Slots will be divided equally between the two FBOs at IAD.

**VZZZ/Southeast Asia** Lunar New Year holiday season, which falls on 28th Jan. Travel-related delays and government office and business interruptions will peak 27 Jan to 01 Feb, and could last longer in Taiwan, Vietnam and China, where the holiday will be celebrated through 02FEB.

**BGBW/Narsarsuaq** A seasonal reminder that if you're planning to use Narsarsuaq as a destination, alternate, or enroute alternate outside of the operating hours (MON-SAT 1000-1900z daily until 03APR), you must contact the airport in advance to apply for them to stay open for you:  
Email: bgbw@mit.gl. Also make sure you file your ATC FPL including the AFTN address: BGBWZTZX.

**EKCH/Copenhagen** A copy of the AOC must accompany fuel release or expect an MOT charge of approximately \$1.70 USD to be charged. Next destination must be shown on the fuel release or expect delays.

**EGPH/Edinburgh, Scotland** Until Apr 1st, you will need PPR to operate to Edinburgh, due to reduced parking capacity.

**RPLB/Subic Bay** will be closed for maintenance between 0100-0800z until January 20th.

**SKZZ/Colombia** New Tower and ACC for Bogota. From 16th Jan – 15th Feb moving of Bogota's ACC will take place. ATS/AIS/COM/MET/ATFM services transition process should not affect operations, however, due to the large change extent foreseen, some failures might occur in the process. AIC 1/17 outlines contingency procedures in place

**SVZZ/Venezuela** has closed its land borders with Colombia and Brazil periodically in the last 12 months. Border closures occur frequently, often with short notice. The Venezuelan government will withdraw the 100 bolivar note (VEF 100) from circulation as of 20 January 2017.

**LYBA/Beograd** If you have any outstanding navigation fees in Serbia, better get them paid, or they'll add a 9.88% interest charge.

**HSSS/South Sudan** Flight Service Bureau has issued an updated summary for South Sudan's airspace: Conflict Zone. South Sudanese Civil War since 2013. The security situation in Juba has been relatively calm since the July 2016 crisis. Daily reports of fighting throughout the rest of the country. The security situation is especially unstable in the Equatorias in the south. MANPADS risk to overflights. In addition, the South Sudanese army has declared intention to shoot down Aircraft without permits. Most Authority guidance recommends min FL260. We think FL300 is a better minimum for overflights.

**ZKKP/North Korea** Flight Service Bureau has issued an updated summary for DPRK North Korea's airspace: The level of tension on the Korean peninsula can change with little notice. Multiple missile launches in 2016, increasingly without prior notice to ICAO. The range of these has increased – previously safe airways B467 and G711 are now at risk. Over 1000 reports of GPS jamming issues reported by operators in the vicinity of the North/South Korean border. SFAR79 prevents US operators from operating west of 132E, other Authorities restrict operation east of that line.

**ZZZZ/Worldwide** How have you been getting on with the new ICAO SID/STAR phraseologies? In short, some countries are implementing, and others aren't. What is your country doing? Tell us at [bulletin@fsbureau.org](mailto:bulletin@fsbureau.org).

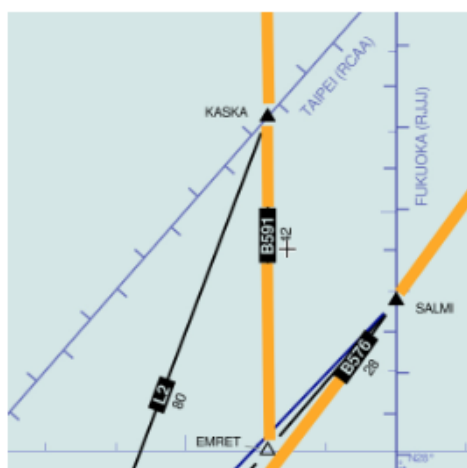
View the full International Bulletin 18JAN2017

---

## Midweek Briefing: Taiwan ADS-B requirement, Costa Rica volcano

Cynthia Claros  
25 January, 2017

<b>INTERNATIONAL BULLETIN</b>	<b>ISSUED BY FLIGHT SERVICE BUREAU</b>
	SITA HNLFSXH AKLFSXH AFTN KMCOXAAL EMAIL <a href="mailto:INTL.DESK@FSBUREAU.ORG">INTL.DESK@FSBUREAU.ORG</a>



**Taiwan ADS-B requirement** 21SEP Yesterday, Taiwan pushed the requirement for ADS-B above FL290 for all aircraft, back to 2020 – as a fast approaching deadline of December this year was looming. Read the article.

**Costa Rica volcano** 21SEP MROC/San Jose, Costa Rica has reopened after the eruption of the Turrialba volcano on Monday. A risk of further closures continues. Read the article.

---

**OPZZ/Pakistan** Some airspace in the north of the country (Kashmir region) has been closed by the Pakistan CAA. Details are unclear but reports indicate Gilgit, Skardu and Chitral Airports are affected by the closure.

**BIKF/Keflavik** Departing KEF eastbound? Icelandic ATC would love you to file the following as a standard route: PIXUM PETUX ORTAV ODPEX, or 63N022W CELLO if you're planning to cross 10W at GOMUP or south of.

**EDDL/Dusseldorf** has closed 05L/23R for a couple of days to remove a WW2 bomb. Some delays at peak times may result.

**HLGT/Ghat, Libya** Three foreign nationals were kidnapped along the road that leads to Ghat Airport on 19SEP, located in the Fezzan province along the southwest border with Algeria. The foreigners were construction workers employed by the Italian-owned Conicos company to service Ghat Airport. There are numerous armed militia and terrorist groups active in the area and the foreigners were said to be operating under discretion due to the security risk.

**EDHL/Lubeck** will closed on Oct 4th for repairs – all day.

**ENGM/Oslo** will introduce new RNP AR approaches in November, available to all runways. Auth from Norwegian CAA is required to use them.

**FKKD/Douala** now requires PPR 72 hours prior arrival, for non-scheduled flights, due to upcoming space restrictions as a result of WIP. You can make requests directly to Airport admin at [pce.douala@adcsa.aero](mailto:pce.douala@adcsa.aero).

**GBZZ/Gambia** In a change to procedure, Overflight Permits, and Landing Permits for traffic operating to GBYD/Banjul, are now issued by the Department of Flight Safety Standards at the GCAA.

**HCMM/Mogadishu** has issued a security reminder to operators: “OPERATORS SHOULD EXER EXTREME CTN AND FULLY ASSESS THE POTENTIAL FOR RISKS TO FLT SAFETY AND SECURITY WHEN PLANNING OR CONDUCTING OPS INTO MOGADISHU AIRPORT DUE TO LACK OF INFORMATION ON ARMED CONFLICT AND LACK OF AERONAUTICAL INFORMATION.”

**FAZZ/South Africa** The CAA has updated its warnings for operators, with new guidance for two airspace blocks: that affected by the Syrian conflict – namely Baghdad, Damascus, and Tehran FIRs; and that affected by recent concerns over the Northern Sinai – their advice is to overfly at FL260 or higher.

**LMML/Malta** airshow coming up on 24-25 Sept, multiple restrictions, check before operating or filing as alternate.

**FZZZ/DRC Congo** Since September 19 large-scale demonstrations have been resulting in violent clashes between demonstrators and security forces in Kinshasa and elsewhere in the country. The situation is particularly tense in Kinshasa where violence has caused casualties. These demonstrations could continue over the next few days and the situation could further degenerate. The sole road to the Kinshasa airport could be blocked and some flights have been cancelled.

**OJZZ/Jordan** It's White Stork migration season, and Jordan has issued warnings for all of its airports, for crews to be mindful of the high chance of presence of large flocks of them on arrival and departure.

**SKED/Bogota** has some comms issues on north/south bound routes to Peru (Lima FIR); 10 minute separation is applied between aircraft on these routes until at least Sept 26th.

**KZZZ/USA** For some good reading, the FAA (thanks Andy for passing this on), have updated their Aviation Weather guidance doc. This is the first revision to the document since 1975.

**Input:** ATC, Pilots, Dispatchers: Any topical items that you think should be going out to the community? Let us know, and we'll get your message out there. [tellus@opsgroup.co](mailto:tellus@opsgroup.co).

View full International Bulletin 21SEP2016

---

# Midweek Briefing 22JUN: Iceland ATC strike - end in sight, Israel FPL changes

Cynthia Claros  
25 January, 2017

**INTERNATIONAL  
BULLETIN**

**ISSUED BY FLIGHT SERVICE BUREAU**  
SITA HNLFSXH AKLFSXH AFTN KMCOXAAL  
EMAIL INTL.DESK@FSBUREAU.ORG



**Iceland ATC strike - end in sight** 22JUN Operators on both sides of the Atlantic have been frustrated over the last 6 weeks with continual sporadic ATC Industrial action. And end may be in sight, but in the meantime keep a close eye on BIRK, BIKF and BIRD Notams. Read the article.

**FPL changes: Israel** 22JUN Current Flight Planning procedures for flights across Europe from Israel will change in light of a new agreement signed between Israel and Eurocontrol. Read the article.

---

**LFZZ/France** ATC Strike Number 9 gets underway today until 24JUN at 0400Z, usual disruption and restrictions apply. Avoid France where possible. NOTAM F1171/16 refers.

**EGGX/Shanwick** is having an 80's party on the 28th of June at 1600Z. For engineering work, all the new technology is being taken offline for three hours, so no CPDLC, ADS-C or OCL. Instead we have Voice Reports, HF, Manual Clearance Requests (123.95 or 127.65), and so on; just like the good old days. When you hit 30W log on to Gander manually.

**UMZZ/Belarus** The Minsk FIR has updated its table of cruising levels and altitudes below Transition; view the AIC.

**Gambia** The UK FCO issued updated travel advice for The Gambia : "Demonstrations took place in April and May 2016 in Banjul. Demonstrations could occur at any time in any part of the country prior to presidential elections planned for 01DEC. You should be vigilant, avoid all demonstrations"

**LPZZ/Portugal** is joining the International ATC Strike Club and will begin with industrial action, for two hours daily on: June 30th, and July 8th, 15th, 22nd and 29th.

**KCXO/Houston Regional** will be opening a new customs facility mid July. KCXO serves the Metro-Houston



area and is 46 miles outside of town. The new CBP facility adds more choice to international operators over the already saturated Houston area airports.

**KZZZ/United States** The U.S. Navy has scrubbed the planned military GPS interference testing across the U.S. Southwest that was supposed to happen this month.

**LWSS/Skopje** is implementing Free Route Airspace in the Skopje ACC above FL245, effective 23JUN. FRA is available H24 with DCT limit unlimited. The ATS network above FL245 is withdrawn. Additional info is available in the Republic of Macedonia AIP AMD 58/16. New RAD measures can be found in the increment file and will become part of Annex 4 on AIRAC 1608.

**LWZZ/Macedonia** Late on 20JUN, tens of thousands of anti-government protesters gathered in central Skopje, Macedonia's capital, to conduct another demonstration. The protesters gathered outside the Special Prosecution building before then marching to the Ministry of Justice building, where they broke some of its windows and threw red paint at its exterior.

**EZZZ/Scandinavia** Another Free Route Airspace update is happening in the two Functional Airspace Blocks NEFAB and DK/SE FAB. NEFRA Phase 1 will be implemented as of AIRAC 1607 on 23JUN, to implement H24 cross border Free Route Airspace between DK-SE FAB and NEFAB, except Norway, above FL285. ATS routes will be kept. Norway plans to implement cross-border Free Route Airspace spring 2017.

**CYZZ/Canada** has introduced "No Drone Zones" around airports that includes fines for offenders caught operating drones in the restricted areas. They are also drafting new legislation to strengthen rules regarding drone operations.

**LEMD/Madrid** may have industrial action on 28JUN, the Apron controllers are making noises about a strike. Not confirmed.

**WAZZ/Indonesia FIR** Ujung Pandang FIR has a couple of radar outages from 19-27JUN. Reroutes or delays are not likely, but strong potential for lower than optimum Flight Levels.

**HECC/Cairo FIR** If for some reason you are operating flights to or from Libya, then **A:** You're probably not reading this bulletin carefully enough, and **B:** Be aware that you are required to obtain PPR from Egypt via AFTN to HECAYNYX, at least 48 hours before the flight, in order to overfly Cairo FIR.

**EGAA/Belfast** ILS 25 out of service along with other ongoing runway and taxiway closures until 11AUG16. Please check EGAA NOTAM's for specific closures.

**EGLF/Farnborough** Temporary restricted airspace will be in effect for the annual Farnborough Airshow 16-17JUL. AIC M 033/2016.

**France** The French authorities have extended the document checks at their borders, these measures will apply to all airports in France and also to Basel airport. Especially during the period of the European Football Championships, passengers travelling to/ from French airports are asked to ensure they have a valid identity document (passport or identity card) with them whilst travelling. A drivers license is not an acceptable document.

**VTBB/Bangkok FIR** Monsoon season runs July-September. Big potential for holding and airport closures in the region, taking extra fuel is recommended.

**OEZZ/Saudi Arabia** FIR is introducing new Navigation Charges on 01JUL. All the maths is here.

**LSZA/Lugano** will close 10-19OCT due to heavy maintenance work on the main runway. No traffic will be able to operate. The airport operator has said 20OCT should be the reopening day but risk that this may be extended.



**WMZZ/Malaysia** Following a directive by the Malaysian Immigration Department, all foreign nationals travelling on all domestic flights will be required to produce passports upon passing through Immigration control, effective immediately.

**Azerbaijan** An online e-visa issuing system, called ASAN Visa, will be established that should streamline the visa application process. Eligible foreign nationals will be able to obtain supporting documents, submit their visa applications and receive an e-visa within three days of submission through the portal. The list of eligible nationals is expected to be available soon on the Foreign Ministry website.

**EGPK/Prestwick** has ongoing overnight closures due to ATC staffing problems, keep an eye on NOTAMs.

**EIDW/Dublin** will closed for 15 minutes at 1500Z on 23JUN due to a VIP departure.

**NWWW/New Caledonia** The South Pacific is not exempt from ATC strikes either; overnight closure of the NWWW airspace means no enroute traffic accepted in the FIR tonight – and sporadically ongoing. Note that the Fire Service also has reduced RFF category at specific times. Check Notams.

**SKED/Bogota FIR** NOTAM of the month award: Colombia Notam A1947 issued on 17JUN. Be aware of the potential for your Cabin Crew to request a change to the SID from ATC, unbeknownst to you. In full: “CHANGES TO STANDAR (sic) INSTRUMENT DEPARTURE (SID) COULD BE DONE BY RADIOTELEPHONY BETWEEN CABIN CREW AND THE CORRESPONDING ATS DEPARTMENT WHILE COMMUNICATION INTERCHANGE, IN ACCORDANCE WITH AERODROME OPERATIONS REF. AIP ENR 1.10”.

We actually have no idea what they mean. Let us know, and keep an eye out for those sneaky flight attendants.

**LEPA/Palma** has a bunch of outages, and runway and taxiway closures at present that will create restrictions and delays. Take a close look at your arrival and dep times before operating.

**Suriname** Immunisation checks for Yellow Fever are being carried out throughout June at all border check points, ports and international airports in Suriname; make sure you have a valid yellow fever certificate if required.

**RJZZ/Japan** On 22JUN heavy rains caused building damage and fatalities in southwestern Japan. At least six people died, as a result of the rain and mudslides across the island of Kyushu. Emergency personnel evacuated several hundred people due to the threat of further mudslides.

**Uzbekistan** has increased security due to a major summit, from 23-34JUN which may result in changes to flight departures and lengthy check in and security clearance at airports across the country.

View the full International Bulletin 22JUN2016