

Going Viral: The non-Covid nasties to watch out for

OPSGROUP Team
25 May, 2021



With Covid running rampant across the globe, other risky diseases have been forgotten somewhat, but there are a fair few out there which can pose a threat to crew on layovers.

So here's a quick round up on **the regions where you might need to cover up, dose up, or just be extra cautious** during your international flight operations, split into sections based on the active travel health alerts that the CDC and other health authorities have out at the moment.

Red Warning Level 3: Avoid all non-essential travel

Guinea - Ebola

They had a serious outbreak earlier in 2021. Actually, cases have reduced significantly and the US has just removed their travel restriction which required travelers coming from Guinea to enter the US via 6 main airports only. Caution is still very much advised though if traveling in the country.

Venezuela - Infrastructure

Not a specific disease caution here, just a warning that their healthcare infrastructure is breaking down and if you are taken ill here you may not be able to access treatment. One to think about if you ever have crew on a layover here.

Amber Warning Level 2: Extra caution

Fiji - Leptospirosis

This really prevalent in Fiji at the moment, particularly rural areas. It is caused by a bacteria spread around by animal pee, and can get into water and soil and live there for months. The main guidance is to avoid swimming or wading in water that could have had infected animals in it. Wear protective clothing and

footwear and cover any cuts and scratches with waterproof bandages.

PREVENTING LEPTOSPIROSIS



Wear protective clothing



Cover skin lesions with waterproof dressings



Don't wade or swim in potentially contaminated water



Wash or shower after potential exposure



Clean your wounds



Don't touch sick or dead animals



Consume clean drinking-water

Leptospirosis can have mild 'flu'-like symptoms and can appear similar to dengue, typhoid and viral hepatitis.

Fever

Chills

Headache

Muscle pain



Consult a health professional if you have symptoms of leptospirosis and have been exposed to contaminated water. Don't self-medicate with antibiotics.

Because people often poke dead rats

Haiti - Rabies

Haiti currently has a big problem with rabid dogs. The bigger issue is that there is an extremely limited supply of treatment drugs in Haiti, so the recommendation is to get vaccinated before you head there.

Avoid dogs, and cats for that matter – even the cute baby ones. You can catch it if you are bitten, scratched or even licked, and treatment is only effective if administered early. Once symptoms present themselves it is often fatal. Plus, getting bitten by anything is never pleasant.

Polio - Africa and Asia

Everyone should be vaccinated against this. If you are not, get vaccinated (or don't travel) because this is continues to be very prevalent in African countries and there is always a risk.

Nigeria - Yellow Fever

Consider getting vaccinated if you head here regularly, and try to prevent mosquito bites (also, because they carry loads of horrid stuff).

International flight crew generally are required to have had Yellow Fever Vaccinations – if you have not then take care because some countries will not allow crew (anyone) to enter who does not have a vaccination booklet if they have traveled to a Yellow Fever region recently.

What else to watch out for

Malaria



This fellow is to blame for a lot of the stuff out there

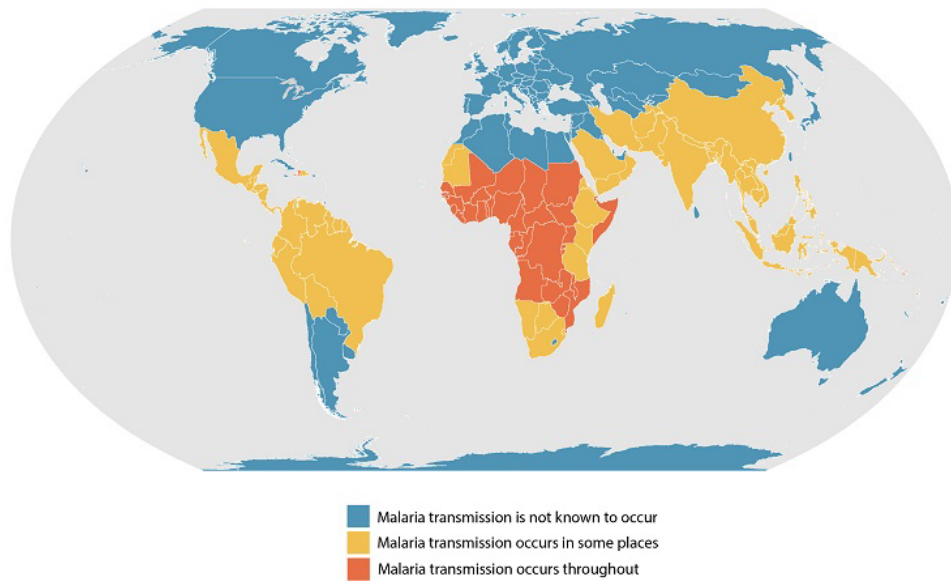
Malaria is a parasite carried around by mosquitos. There are actually four types of it, and it is in a lot of places!

The big risk here is it can take a while for symptoms to show. They reckon you're most likely to have **symptoms between 10 days and 4 weeks** from being infected, but it could take as long as a year. The little beasts also like to loiter around in your liver, popping out at random times when you're run down, and so can cause recurring illness for as long as 4 years after infection.

Where?

According to the CDC it is **found in warmer regions**, which doesn't narrow it down an awful lot – basically anywhere hot and humid where there are places for mosquitoes to breed and grow. Just after rainy season is likely to be the worst, and rural areas will be more risky.

We have borrowed the CDC map because it is easier than trying to list everywhere to watch out.



Mozzies generally don't like cold or high altitude spots

How to prevent it

If you are going to a Malaria riddled area then you can take preventative medicine, but watch out! Not many are approved for operating pilots because they can have some nasty side effects. Malarone is the most commonly approved (and generally has the least side effects) but **we ain't no doctor so check with an AME** from your licensing state before taking.

The other option is to slather yourself in deet and wear long clothing to prevent the little nippers from getting at you in the first place.

The Symptoms

- Fever, sweats and chills
- Muscle ache
- Nausea and sickness

So, basically generic symptoms of about a thousand other possible diseases.

If you have been to a malaria area and are thinking **"I got chills, they're multiplying"**, don't write them off as a random cold – tell a doctor so you can get tested because it can get very serious!

Dengue Fever

Another one to blame on the pesky mosquito, Dengue is **common in over 100 countries**, and over 400 million people catch it every year, 100 million getting sick and 22,000 dying. Dengue Fever is **Malaria's bigger, badder brother**, and there is no specific treatment.

Like Malaria, there are also different strains of the virus meaning you can get different sorts, multiply times.

Where?

Outbreaks are coming across the Americas (including North America, although the mosquitoes aren't there, people just head in already infected), Africa, the Middle East and Asia, and the Pacific Islands. It is most prevalent in **tropical and sub-tropical areas**.

There is currently a growing outbreak in Reunion.

Brazil has the highest rate of Dengue fever in the world.

How to prevent it

Best plan, don't get bitten. Insect repellent is smelly, sticky stuff but it works. Here's what the CDC recommends:

- DEET
- Picaridin (known as KBR 3023 and icaridin outside the US)
- IR3535
- Oil of lemon eucalyptus (OLE)
- Para-menthane-diol (PMD)
- 2-undecanone

There is a vaccine but it is only given to people who have been infected before and have a risk of getting severe Dengue, and for kids between 9-16 who live in a Dengue area.

The Symptoms

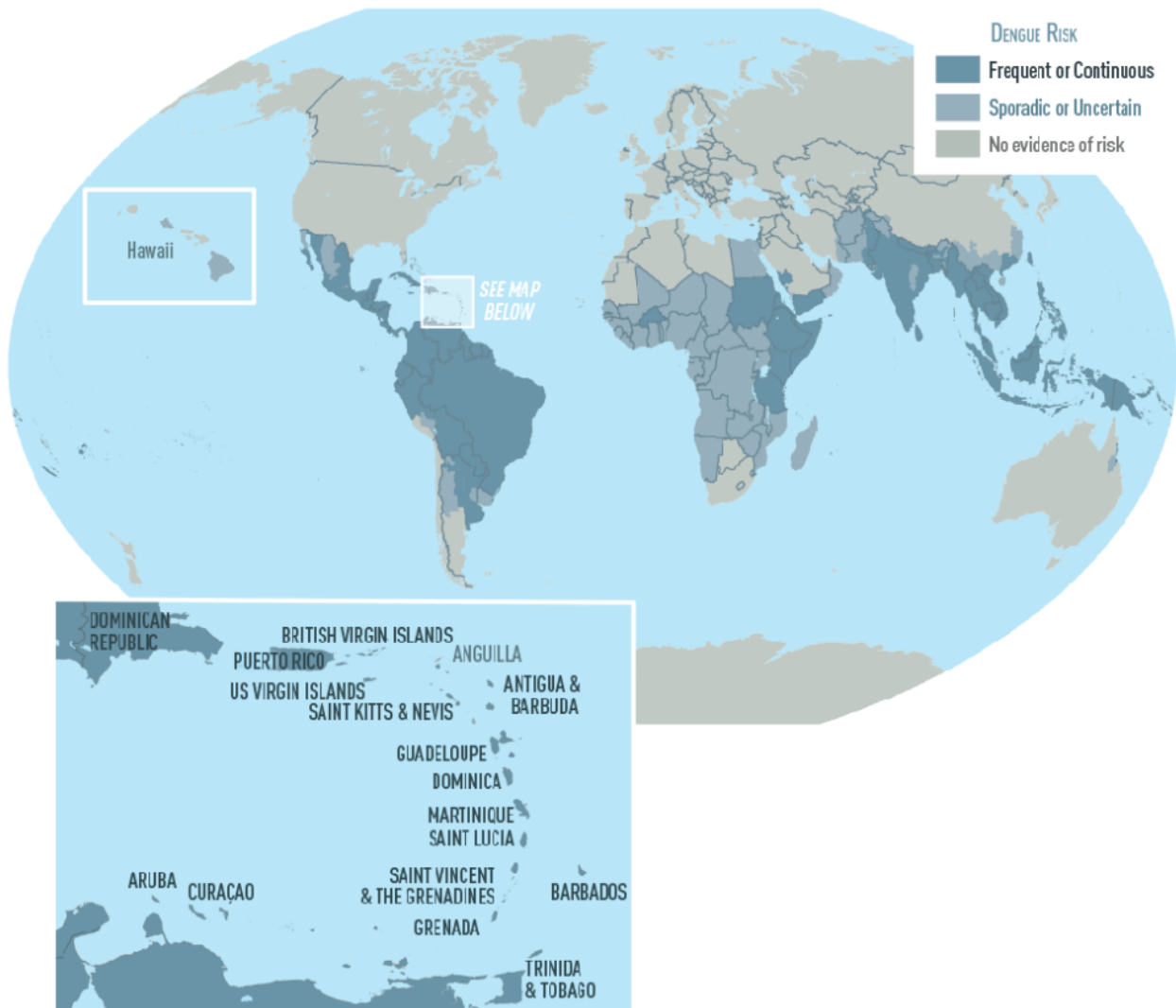
The early, mild ones tend to get confused with other diseases so again, ff you've been somewhere with Dengue, don't assume it is something else. **Go get tested.**

Initial symptoms usually appear within 4 to 10 days:

- Nausea and sickness
- Rash
- Aches and pains, especially behind the eyes and in bone joints and muscles

These last around a week, unless you develop serious Dengue fever, which 1 in 20 do:

- Belly pain
- Vomiting (a lot)
- Bleeding from nose and gums
- Lethargy



Another handy map courtesy of the CDC

Zika

This one made the news a few years ago as it can cause serious birth defects. The symptoms for most tend to be fairly mild though.

It is also transmitted by our old friend the mosquito and there is no particular treatment so your preventative tricks are the best – don't get bitten!

Chikengunya

Transmitted by mosquitoes, this has very similar symptoms to Dengue Fever and Malaria, and is found in all the same spots.

There is no treatment for it and no vaccine to prevent it, so preventing bites is really important.

There are currently serious outbreaks in Brazil, and in Asia (Vietnam, Philippines)

Ebola

This is a nasty one, often deadly, and **causes lasting damage**. They don't really know where it comes

from but it possibly started with monkeys and apes and was passed onto us human folk.

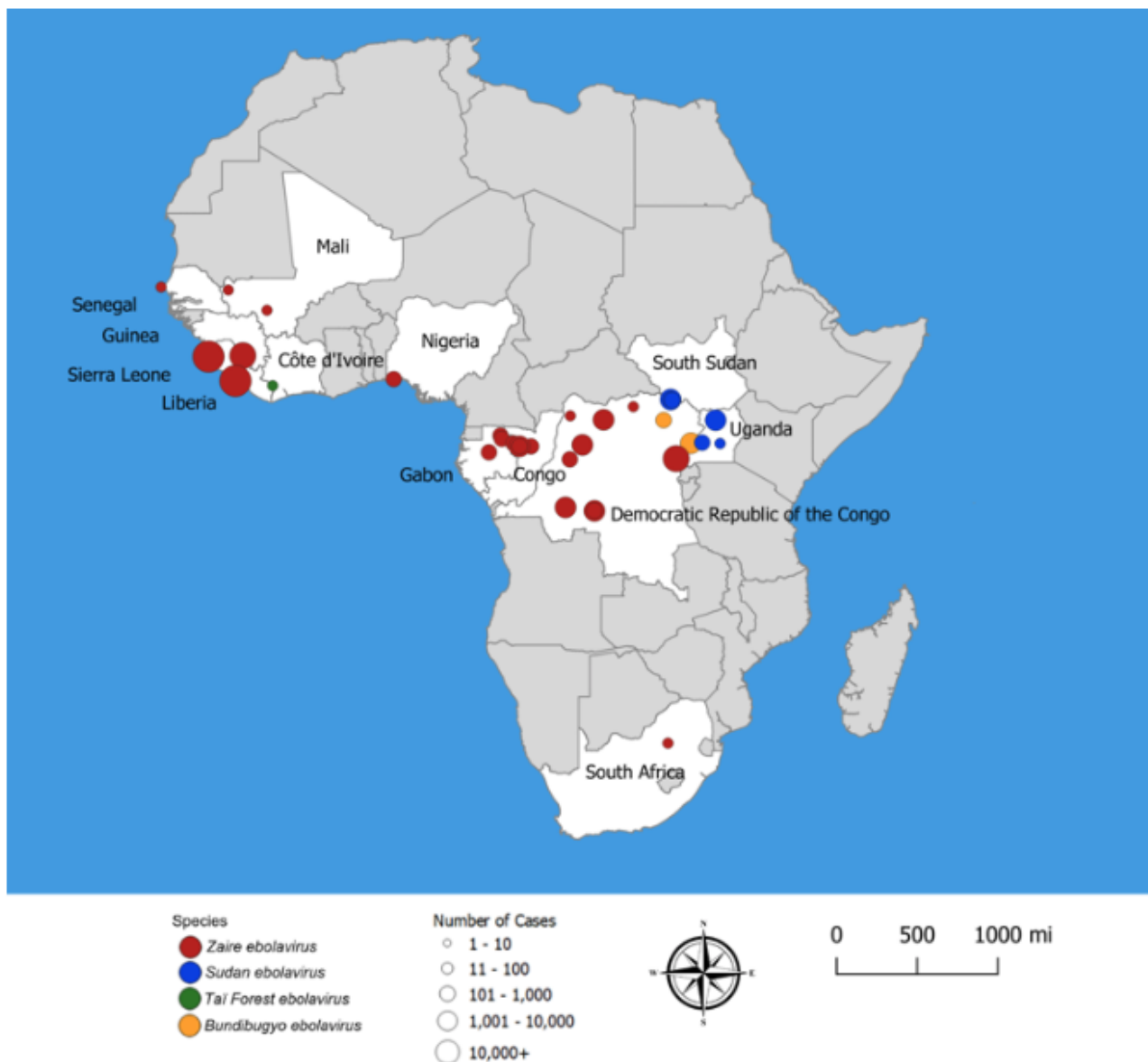
It is spread through direct contact with all the gory stuff that comes out of sick people.

Where?

Guinea had a major outbreak in 2021, but cases have fallen again. The US previously restricted travelers from here, and from the DRC, only allowing entry through 6 specific airports.

In 2020, the DRC (formerly Zaire) had a major outbreak.

It is most common in African countries, particularly the central African countries, and along the north west coast.



Different Ebola virus strain outbreaks

How to prevent it

It is spread through bodily fluids so avoiding contact with these is important. You also should avoid contact

with animals that live in Ebola regions. Bats, primates, forest antelope all carry strains of the virus. **So don't eat them.**

There is a vaccine but it is only used in areas where an outbreak is occurring. There is medicine for treating it, and they do help survival rates. You also need medication to support blood pressure, to manage the fever etc, so this really is a serious disease which you do not want to catch

The symptoms

These can appear between **2 and 21 days of infection, usually around the 8 day mark**. The main symptoms are:

- Fever
- Severe aches and pains
- Sore throat
- Loss of appetite
- Gastrointestinal symptoms
- Unexplained hemorrhaging, bleeding and bruising

Yellow Fever

This is **pretty rare nowadays**, but still on to watch out for across Africa and South America. It gets its name from the fact it generally causes jaundice.

Insect repellent works well. It is transmitted by the mosquito (again)

There is also a vaccine. It has been used for 80 years and it's pretty well tested, safe and effective, with 1 dose providing life long protection. In fact, many countries require travelers to have had the vaccine if they are entering from a country (or have visited one) where there are high incidences of Yellow Fever.

Meningitis

This is serious – it makes your brain and spinal cord membranes swell up which sounds horrid and painful. It can be **bacterial, viral, parasitic, fungal, amebic...** so there are a bunch of different sorts all with varying degrees of nastiness.

Good news though, there is treatment for most, and vaccines. You have likely had some already, it is another one that flight crew are often vaccinated for because this can be caught from all over the place. Bacterial in particular can be in food.

General travel recommendations

The CDC has good guidance for flight crew which you can read [here](#).

Many international airlines require their crew to have the following vaccinations, and they are often recommended in general for any traveller:

Cholera – Africa, Asia, Central America and the Caribbean

Diphtheria – Africa, south Asia, former Soviet Union. This protects you against Diphtheria, polio and tetanus

Hepatitis A – Africa, Asia, Middle East, Central and South America. This is common in places with poor sanitation and hygiene and can be picked up a lot of ways.

Hepatitis B – Africa, Asia, Middle East, Central and South America. This is spread by bodily contact generally.

Japanese Encephalitis – Common in rural areas of Asia with a tropical climate, after the rain season. It is also found in western Pacific island and near Pakistan, China and Australia. Actually, it is rarely found in Japan because they did a mass immunization program years ago. There is a tick borne version too. Also with a vaccine available.

Typhoid – the Indian sub continent, south and south east Asia, South and Central America, Middle East

Fiji ATC operations return to normal

David Mumford

25 May, 2021



Update Apr 2: ATC operations have returned to normal across Fiji, following last week's strike by air traffic controllers. On Fri Mar 29, an Arbitration Court ordered they return to work, although some workers remain suspended. Over the weekend, there were Notams in place for NFFN/Nadi and NFNA/Nausori which warned of no ATC services overnight, but these have since been cancelled.

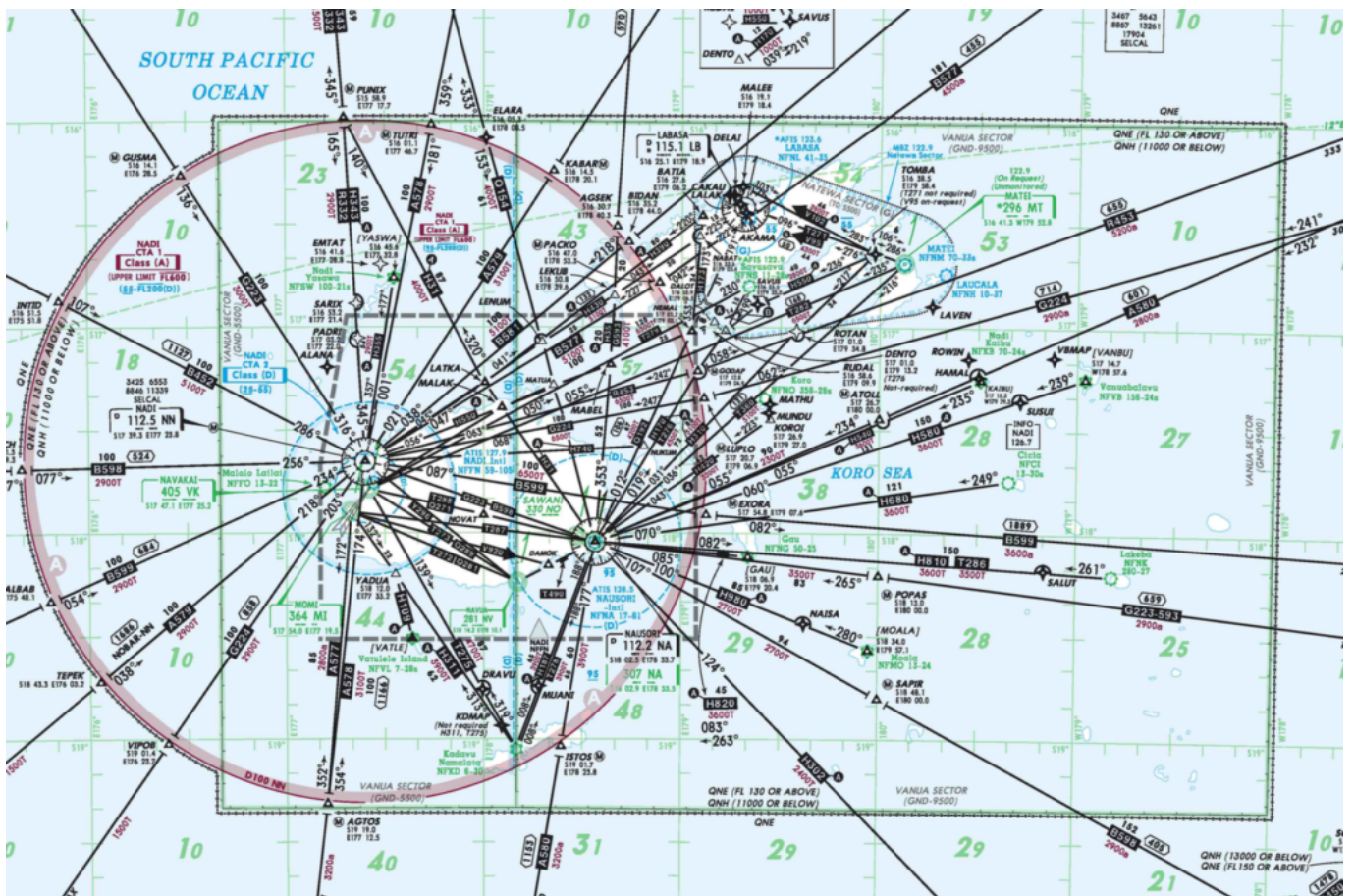
During the ATC workers strike, the response by the authorities was to publish Notams advising that the airspace around the country's two main airports, NFFN/Nadi and NFNA/Nausori, was "Class G" airspace, with "TIBA" procedures in effect.

Both of these are bad news – they basically mean that the airspace is uncontrolled, and pilots have to

separate themselves from each other during arrival and departure phases.

TIBA stands for 'Traffic Information Broadcasts by Aircraft'. ICAO Annex 11 states that TIBAs "should be made only when necessary and only as a temporary measure".

TIBA procedures are normally only ever implemented in areas where there are light general aviation movements, in uncontrolled airspace, or during large scale emergencies or natural disasters; it's very unusual to see them being implemented around big international airports such as Nadi and Nausori.



With less ATC staff available to work due to the strike, it seems the authorities implemented these measures as a way of reducing normal workloads for the controllers who were not on strike and remained on shift.

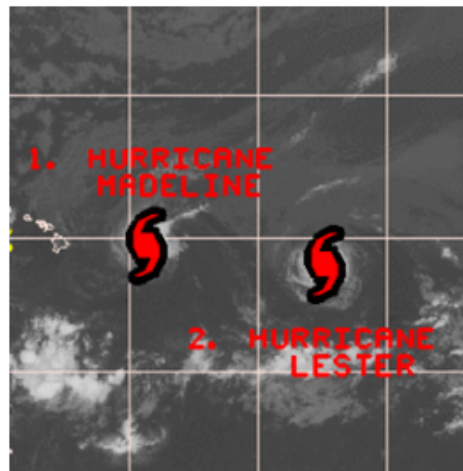
Further reading

- Tell us anything additional we should know - news@ops.group
- Monitor #ops-alerts in your member Dashboard, and Slack.

Midweek Briefing: End of Canada Leniency, Two hurricanes inbound Hawaii

Cynthia Claros
25 May, 2021

INTERNATIONAL BULLETIN	ISSUED BY FLIGHT SERVICE BUREAU
	SITA HNLFSXH AKLFSXH AFTN KMCOXAAL EMAIL INTL.DESK@FSBUREAU.ORG



End of Canada Leniency 31AUG Earlier this year Canada introduced a requirement for an eTA – like the US Esta. For a while, it was OK to travel without one. **That's ending in September** ... Read the article

Two hurricanes inbound Hawaii 31AUG Madeline is first, followed by Lester – both are tracking west towards Hawaii with landfall expected – should it occur – on Wednesday and Thursday. Read the article

LTCC/Diyarbakir, Turkey Kurdish militants fired rockets at Diyarbakir Airport in southeastern Turkey. The militants reportedly targeted a security check-point outside the airport lounge. All personnel were taken inside terminal building for safety reasons. No flights were disrupted, and there were no reports of casualties.

EHAM/Amsterdam It's that time of year again, watch out for the migrating geese in Amsterdam at sunrise and sunset. They operate between 300 and 700ft without transponder.

VVVV/Hanoi FIR If you're cutting a line through the Hanoi FIR on the W1 airway, you'll be held down at FL290 unless you have RNAV5. ATC says so.

DNZZ/Nigeria Members of aviation unions staged rallies at four major airports in Nigeria to protest the planned concession of the facilities to private investors. Protests occurred at Abuja (DNAA/ABV), Kano (DNKN/KAN), Lagos (DNMM/LOS) and Port Harcourt. So far, the protests have not disrupted ops. Lagos has been suffering from some power outages lately as well.

SOCA/Cayenne, French Guyana has staff shortages, and from September 1st will not accept any

diversions unless in an emergency. Do not plan SOCA as an enroute alternate. If inbound, with an ETA for SOCA 0200-1100Z, you need to call for an arrival slot. If you need it, ATC phone is +594 594 35 9372 or 9302.

OIZZ/Iran has approved the use of its airbases by Russian fighter aircraft; Russia has notified intention to launch missiles in the direction of Syria from the Caspian Sea fleet. The Russian Air Force has deployed six Tu-23M3 BACKFIRE bomber aircraft and multiple Su-34 FULLBACK strike fighter jets to Hamedan Air Base (OIHS/NUJ).

ORBB/Baghdad FIR/Iraq The Iraqi government has given permission to the Russian MoD to use its airspace in support of air operations in Syria. Russian media outlets are also reporting the Russian MoD has requested use of the FIR for the “passage of cruise missiles” as well, highlighting the potential for such activity to occur in the coming days from the airspace over the Caspian Sea.

LTZZ/Turkey Russia has lifted it’s ban on charter flights to Turkey.

HAZZ/Ethiopia Reports indicate that flights to HAGN/Gondar (GDQ) and HABD/Bahar Dar (BJR) have been indefinitely suspended. The suspension of flights comes amid ongoing unrest in Gondar and Bahir Dar, as well as in other cities in the Amhara and Oromia regions, over the marginalization of ethnic groups by the Tigray-dominated Ethiopian People’s Democratic Front (EPRDF) regime. Ethiopian government officials have not commented on the cancellation of flights to those cities or international flights to Addis Ababa, which has not been largely affected by the unabated unrest occurring in outlying regions.

WSSS/Singapore air quality has deteriorated to a Pollution Standards Index (PSI) of 105, due to the cross-border haze from Indonesian slash-and-burn fires. The agricultural practice, during which farmers burn a patch of land in order to clear land for new crops, creates haze, which then drifts through the region. Experts believe the level of pollution — which in 2015 cost the region more than 700 million US dollars in damage and severely disrupted the aviation sector — will be lower in 2016 due to a rainy dry season.

NFNA/Suva, Fiji is closed during September for runway repairs. Available with 30 mins PN in an emergency. Call them on 9906102.

SUEO/Montevidedo Air Traffic Controllers strike until end of September, closures and departure restrictions in place. Info is sketchy, got some updates? Let us know ... bulletin@fsbureau.org.

[View full International Bulletin 31AUG2016](#)

Midweek Briefing:EU Border Controls Expanded, New NAT Plotting Chart published

Cynthia Claros
25 May, 2021

INTERNATIONAL BULLETIN

ISSUED BY FLIGHT SERVICE BUREAU

SITA HNLFSXH AKLFSXH AFTN KMCOXAAL

EMAIL INTL.DESK@FSBUREAU.ORG



EU Border Controls expanded 02MAR Travellers and crews operating to Denmark, Belgium and other EU countries will need to present travel documents to enter from another Schengen country. The security checks will likely cause travel delays for EU and non-EU travellers into the Schengen area.

New NAT Plotting Chart published 02MAR With the multitude of changes on the North Atlantic in the last few months, including new Tracks, end of MNPS, new HLA, RNP4 – we have published an **updated and revised Plotting Chart** for the NAT region, showing all new requirements and with updated Airport and Fuel pricing. It's effective 03MAR.

VOXX/India has expanded its e-Tourist Visa (eTV) program to applicants from 37 additional countries. Eligible visitors under the eTV include business visitors and those traveling to sightsee, visit friends or relatives or to make short medical visits. Nationals from a total of 150 countries are now eligible for the program.

EXXX/Europe Due to the introduction and continuation of border controls in the European Union, travellers to Denmark, Belgium and other EU countries will need to present travel documents to enter from another Schengen country. The security checks will likely cause travel delays for EU and non-EU travellers into the Schengen area. Belgium has instituted border controls at its borders with France. The security checks will remain in place until at least 23MAR.

KTEB/Teterboro will close 0500-1700Z (12 hour closure) this weekend – from midnight Saturday until noon Sunday. This closure is necessary to install new, mandatory hold short signs on Runway 19, which will close the runway intersection. Helicopter operations will be permitted during the closure.

HKXX/Kenya A visa on arrival is now available again at Nairobi, reversing the previous procedure established last year forcing all visitors to obtain one prior to flying. Online visas are still available. <http://evisa.go.ke/evisa.html>

NFXX/Fiji As of 25FEB, there are 42 confirmed deaths in Fiji due to the damage caused by Cyclone Winston, which made landfall over the 20-21 February weekend. Approximately 35,000 people are

sheltering in evacuation centers. There has been little to no contact with remote islands; therefore, the number of casualties and people displaced is likely much higher. Concern about the outbreak of mosquito-borne viruses, such as Zika and dengue fever.

WAXX/Indonesia Australian DFAT updated its travel advice for Indonesia, which reads: “We advise you to exercise a high degree of caution in Indonesia, including Jakarta, Bali and Lombok, due to the high threat of terrorist attack. We continue to receive information that indicates that terrorists may be planning attacks in Indonesia”

SKXX/Colombia is introducing ADS-B, with associated new phraseologies that crew should be aware of. ATC may ask “Notify capacity ADS-B”; response “ADS-B transmitter”, “ADS-B Receiver”, or “Negative ADS-B”. Full AIC.

LOWW/Vienna has a couple of new RNP AR (Authorisation Required) approaches to RWY 16 and 34 on test.

LIXX/Italy is joining the Free Route Airspace (FRA) bandwagon, airspace trial this coming weekend 05-07MAR at FL370 and above in Roma, Milano, Padova and Brindisi ACC, and Malta ACC.

UKXX/Ukraine Did you know that there was reduced horizontal separation in Ukraine airspace (RHSM)? Neither did we. Check out AIC 02/16.

UIBB/Bratsk has fuel supply issues again, current shortage until 31MAR.

[View the full International Bulletin 02MAR2016](#)

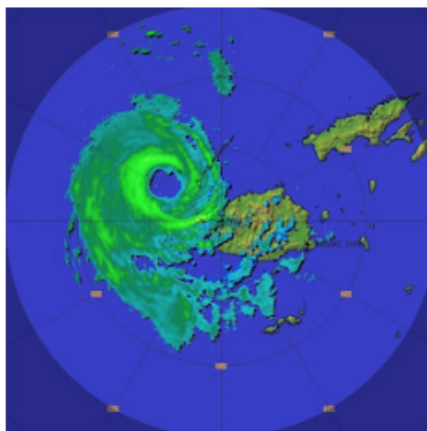
Midweek Briefing: New Wake Turbulence Categories, Fiji Cyclone Winston

Cynthia Claros
25 May, 2021

INTERNATIONAL BULLETIN

ISSUED BY FLIGHT SERVICE BUREAU

SITA HNLFSXH AKLFSXH AFTN KMCOXAAL
EMAIL INTL.DESK@FSBUREAU.ORG



New Wake Turbulence Categories 24FEB New Wake Turbulence Categories will begin a slow introduction in Europe on 22MAR at Paris Airports LFPG/De Gaulle and LFPB/Le Bourget, where the current four (Light, Medium, Heavy, Super) will become six. Those six new categories are Light, Medium (with Lower and Upper), and Heavy (with Lower, Upper and Super). Read the full article ...

Fiji Cyclone Winston 24FEB Fiji sustained widespread damage throughout the Islands on 21FEB from Tropical Cyclone Winston; most airports are open and operating again, including all international airports (NFFN/Nadi, NFNA/Suva). The following domestic airports are also open: Kadavu, Labasa, Rotuma, Labasa, Rotuma, Gau, Kadavu. NFNA/Suva has no overnight parking available at present due to congestion caused by the Relief effort.

NFFN/Nadi, Fiji Hit by Tropical Cyclone Winston on 21FEB, while there is widespread damage throughout the Islands, most airports are open and operating again, including all international airports (NFFN/Nadi, NFNA/Suva). The following domestic airports are also open: Kadavu, Labasa, Rotuma, Labasa, Rotuma, Gau, Kadavu. Note that NFNA/Suva has no overnight parking available at present due to congestion caused by the Relief effort.

KAGS/Augusta, USA Special Procedures in place 07-10APR for US Masters Golf Tournament.

EXXX/Europe New Wake Turbulence Categories will begin a slow introduction in Europe on 22MAR at Paris Airports LFPG/De Gaulle and LFPB/Le Bourget, where the current four (Light, Medium, Heavy, Super) will become six. Those six new categories are Light, Medium (with Lower and Upper), and Heavy (with Lower, Upper and Super). The rules are part of the RECAT-EU project, with the intention of squeezing more traffic into busy European Airports by applying more precise turbulence separation rules. The separation minima are determined specific to each Aircraft Pair. For example, at the moment, an A330 following a B777 (Heavy behind heavy) requires 4 miles in trail. With the new rules, that is reduced to 3nm. An A320 can now follow 4 miles behind a B777, instead of the current 5nm. There are no Flight Planning Changes (continue to use /L,M,H,J for the ICAO Category). For crews, you'll notice the smaller separation, but there are no changes to callsigns or pilot obligations - for now. Read full article.

DRRR/Niamey FIR Air Traffic Control 48HR strike 24 and 25FEB. The ASECNA Contingency plan is

activated, with ATC provided by neighbouring ACC's Dakar and N'Djamena.

LTXX/Turkey We have received several reports that Overflight Permits, which were removed as a general requirement for non-scheduled flights in 2015, are being requested by Turkey for Business Aviation aircraft, specifically M- and VP- registrations. Reports welcomed to clarify to bulletin@fsbureau.org.

RCTP/Taipei Airport works on several parking positions may create availability issues from 04MAR-04APR especially for Airbridge gates. Check with handler.

LFPB/Paris Le Bourget Due WIP airport will be closed during 10 nights from 15FEB to 26FEB, every night from 2045 to 0500Z. No Medevac flights will be possible.

EPKK/Krakow Runway 07/25 is closed daily 2330-0430 until 03MAR.

UXXX/Simferopol FIR EASA published an updated SIB 2015/16 regarding the use of Simferopol FIR on 17FEB. The key change is the phased reintroduction of the use of Simferopol FIR for international transit traffic, on the basis of an evaluation of the high seas portion of the airspace (ie. outside the 12nm territorial limit of the Crimean Peninsula). This airspace provides routes UL851 and UM856 (Odesa South Sector), which since 17FEB are suggested by EASA for use by overflying traffic.

YMML/Melbourne will host the Formula 1 Grand Prix 17-20MAR, with additional traffic to both YMML and YMEN/Essendon during these dates.

EHAM/Amsterdam has changed the callsign of Schiphol Start-up to "Schiphol Planner".

OYAA/Aden, Yemen Airport closed and all flights cancelled since 21FEB due to security concerns.

NVTV/Port Vila On 17FEB local officials signed an agreement with a private contractor to begin repairing the runway. Several airlines suspended flights on 23JAN due to safety concerns with the airport's runway. Aviation officials stated that the renovations should begin in March.

[View the full International Bulletin 24FEB2016](#)

Monday Briefing: Saudi Arabia, Bahrain ban flights from Iran, New US Visa Waiver Restrictions

Cynthia Claros
25 May, 2021

INTERNATIONAL BULLETIN

ISSUED BY FLIGHT SERVICE BUREAU

SITA HNLFSXH AKLFSXH AFTN KMCOXAAL
EMAIL INTL.DESK@FSBUREAU.ORG



Saudi Arabia and Bahrain ban flights from Iran 11JAN Bahraini and Saudi Civil aviation have banned flights between Bahrain, Saudi Arabia and Iran. The Bahraini Civil Aviation Authority (BCAA) stated that it will work to resolve any disruptions as a result of the ban. Bahrain previously cut diplomatic relations with Iran, following the attack on the Saudi Embassy in Tehran.

New US Visa Waiver Restrictions 11JAN Several changes to the rules for the US Visa Waiver program are now in effect, restricting the moment of travelers having visited Iran, Iraq, Sudan, or Syria in the last 5 years. Read more ...

NFFN/Fiji A report released by the Disaster Management Office on 4 January 2016 stated that Cyclone Ula caused minor damage to Fiji. While the storm blew away iron roofs in Ono-i-Lau and Kabara islands, it did not cause significant structural damage or loss of life.

SBxx/Brazil Tourists from Australia, Canada, Japan and the United States will be eligible to travel to Brazil for the upcoming Olympics without a visa for up to 90 days for visits between 01JUN and 18SEP16, though no extensions will be available. Proof of Olympic attendance is not required for this visa waiver. Business travelers from these countries will still require business visas during this time. Eligible travelers should be sure to confirm the validity of their travel documents prior to their trips. After 18SEP, tourists from these countries will require tourist visas for entry.

LFL/Lyon Due to industrial strike affecting fuel providers at LFL (Lyon Airport). Aircraft Operators have been asked to tanker in enough fuel for a round trip. LFL Airport can also not be used as alternate until 12JAN.

Cxxx/Canada Nav Canada has issued AIC 3/16 advising of a pending change to the credit that may be taken at alternate aerodromes for lateral navigation/vertical navigation (LNAV/VNAV) minima, when the aircraft is certified for barometric LNAV/VNAV.

KPHX/Phoenix Possible arrival and departure delays are expected on 12JAN due to extra passenger volume the day after the Alabama and Clemson football game. The airport expects an extra 30,000 departing passengers that day, boosting the total number of passengers to 150,000. In addition to

regularly scheduled flights, at least 14 charter flights will depart.

Kxxx/Southern California SpaceX has scheduled a launch for Jan. 17. This launch will take off from Vandenberg Air Force Base in California. Please check local NOTAMs with KZLA (SOCAL) and KZOA (Oakland Oceanic) for any airspace closures.

Zxxx/China Chinese officials stated that they will allow departing flights to transit via Taiwan. Aviation officials will allow flights departing from Chongqing, Nanchang and Kunming to transit through Taipei's Taoyuan International Airport (RCTP/TPE).

Fxxx/Madagascar On 7 January 2016, Malagasy health officials reported statistics in an ongoing outbreak of the bubonic plague. Reports indicate that 63 fatalities and a total of 174 cases have been recorded since August 2015. Madagascar first alerted the World Health Organization (WHO) to this outbreak in September. A previous outbreak in 2014, which lasted until early 2015, resulted in 335 cases and 79 fatalities.

Dxxx/Nigeria The Nigerian Civil Aviation Authority (NCAA) has lifted the suspension it recently imposed on Acorn Petroleum Limited from supplying aviation fuel to domestic and foreign airlines at airports in the country. NCAA had suspended Acorn and four other oil marketing companies from supplying aviation fuel to local and foreign airlines operating in the country.

Vxxx/India The Indian government has approved a Memorandum of Understanding on Civil Aviation between India and Singapore.

View the full International Operations Bulletin 11JAN2016

Monday Briefing: NAT Tracks Change Postponed, KLAS/Las Vegas restrictions

Cynthia Claros
25 May, 2021

INTERNATIONAL BULLETIN

ISSUED BY FLIGHT SERVICE BUREAU

SITA HNLFSXH AKLFSXH AFTN KMCOXAAL

EMAIL INTL.DESK@FSBUREAU.ORG



NAT Tracks Change Postponed 16NOV The planned implementation of reduced separation in the Organised Track System (OTS) has been postponed. During final testing, a software issued was identified by ATC, and as a result the previous track structure remains unchanged. New waypoints introduced on 12NOV are useable. A revised implementation date is expected to be announced today, 16NOV.

KLAS/Las Vegas restrictions 17NOV Increased traffic from Monday 16NOV due NBAA Conference. Special Procedures in effect from 14NOV-23NOV affecting KLAS, KHND, and KVG, refer to this NBAA link for details. If you are visiting the NBAA Conference, you can meet the Flight Service Bureau team at stand C12050 in the Central Hall, and collect your free show pack.

KAUS/Austin A technical problem with ATC equipment in the Austin Tracon will likely lead to delays today; service is being provided by Houston Centre instead, with a Ground Delay Program planned to manage capacity.

KLAS/Las Vegas Increased traffic from Monday 16NOV due NBAA Conference. Special Procedures in effect from 14NOV-23NOV affecting KLAS, KHND, and KVG. Refer to <https://www.nbaa.org/events/bace/2015/air-traffic/>. If you are visiting the NBAA Conference, you can meet the Flight Service Bureau team at stand C12050 in the Central Hall, and collect your show pack (you can reserve one **here**).

KXXX/USA Several incidents reported of laser beams pointed at aircraft, on 13NOV Southwest and American were targeted at KPHX/Phoenix, and on 11NOV three aircraft at KDAL/Dallas Love were illuminated.

KXXX/USA Runway Closures BWI-RWY 10/28 CLOSED SEA-RWY 16C/34C CLOSED LAS-RWY 7L/25R CLOSED

KXXX/USA Snowbird 2015: The FAA have published details of Traffic Management plans for the east coast of the US during the Thanksgiving holidays, effective 24NOV to 30NOV. The highest volume days will be 25NOV and 29NOV, expect delays on north/south routes to Florida during this period. Read the full details of the airspace initiatives [here](#).

EINN/Shannon Has an overnight runway closure. from 17NOV-20NOV 2300-0500Z for essential

maintenance. If another ETOPS alternate is required on these nights consider EIDW/Dublin, EGAA/Belfast or EGPF/Glasgow.

LFXX/France A Notam issued Friday (A4850/15) regarding Border Controls remains in place, in practice the Notam is a reminder to airlines of existing requirements only. Expect delays due security checks at all French Airports, and many closures of public buildings and transport systems in France.

VLVT/Vientiane, Laos has reopened after a runway closure on 13NOV due to a disabled aircraft. An MA60 had aquaplaned and partially blocked the runway.

MNXX/Nicaragua closed its border with Costa Rica on Sunday 15NOV in response to the wave of Cuban migrants moving northward to the United States. Costa Rican officials had previously issued transit visas to approximately 1,200 detained Cuban refugees at the Panamanian border. One Cuban migrant stated that there were approximately 2,000 Cubans waiting on the Costa Rican side of the Nicaraguan border.

NFFN/Nadi, Fiji Refurbished departure lounge opens today 16NOV; the government will spend another 105 million USD to upgrade the Airport further in the coming year.

PAZA/Anchorage FIR Two new waypoints have been added for Polar operations. Those waypoints are LETUN and BAREK.

LFxx/France ATC Industrial action planned for 17NOV has been cancelled.

Llxx/Italy FIR There has been a call for an Italian National Strike, including ENAV ATC personnel, on 24NOV 1200-1600 UTC. More information will be posted as soon as it is available.

PLCH/Christmas Island As per NOTAM A1581/15 Jet A-1 fuel limited in supply. Sched flights to minimize fuel uplift on arrival or maximize tankering into PLCH. Tech stops cannot be made. In effect until 04DEC.

PKMJ/Marshall Island Construction is planned at the eastern end of RWY25; authorities have notified expected delays of up to 30mins including airborne holding.

FMEE/Reunion Airport will be closed from 16NOV-28NOV on Mon, Weds, Fri for surface work. Airfield cannot be used as an alternate except in case of emergency. All traffic services will be provided normally for all aircraft crossing La Reunion TMA. Refer to NOTAM A1452/15.

FAA The FAA is rolling out Controller Pilot Data Link Communications-Departure Clearance (CPDLC-DCL). Currently, only George Bush Intercontinental Airport in Houston, TX (IAH), William P. Hobby Airport in Houston, TX (HOU) and Salt Lake City International Airport in Utah (SLC) are operational, however, the FAA plans to bring 56 airports online by the end of 2016. KTEB/Teterboro is scheduled to be operational by the end of MAR2016.

View the full International Operations Bulletin for 16NOV2015