

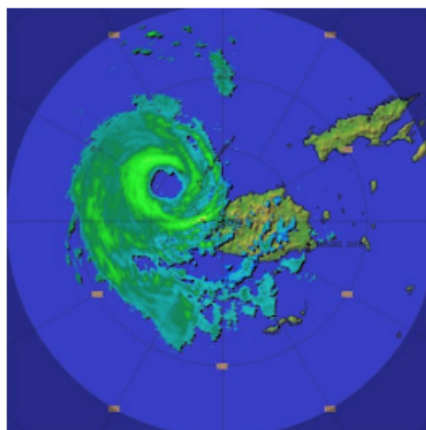
# Midweek Briefing: New Wake Turbulence Categories, Fiji Cyclone Winston

Cynthia Claros  
23 February, 2016

**INTERNATIONAL  
BULLETIN**

**ISSUED BY FLIGHT SERVICE BUREAU**

SITA HNLFSXH AKLFSXH AFTN KMCOXAAL  
EMAIL INTL.DESK@FSBUREAU.ORG



**New Wake Turbulence Categories** 24FEB New Wake Turbulence Categories will begin a slow introduction in Europe on 22MAR at Paris Airports LFPG/De Gaulle and LFPB/Le Bourget, where the current four (Light, Medium, Heavy, Super) will become six. Those six new categories are Light, Medium (with Lower and Upper), and Heavy (with Lower, Upper and Super). Read the full article ...

**Fiji Cyclone Winston** 24FEB Fiji sustained widespread damage throughout the Islands on 21FEB from Tropical Cyclone Winston; most airports are open and operating again, including all international airports (NFFN/Nadi, NFNA/Suva). The following domestic airports are also open: Kadavu, Labasa, Rotuma, Labasa, Rotuma, Gau, Kadavu. NFNA/Suva has no overnight parking available at present due to congestion caused by the Relief effort.

---

**NFFN/Nadi, Fiji** Hit by Tropical Cyclone Winston on 21FEB, while there is widespread damage throughout the Islands, most airports are open and operating again, including all international airports (NFFN/Nadi, NFNA/Suva). The following domestic airports are also open: Kadavu, Labasa, Rotuma, Labasa, Rotuma, Gau, Kadavu. Note that NFNA/Suva has no overnight parking available at present due to congestion caused by the Relief effort.

**KAGS/Augusta, USA** Special Procedures in place 07-10APR for US Masters Golf Tournament.

**EXXX/Europe** New Wake Turbulence Categories will begin a slow introduction in Europe on 22MAR at Paris Airports LFPG/De Gaulle and LFPB/Le Bourget, where the current four (Light, Medium, Heavy, Super) will become six. Those six new categories are Light, Medium (with Lower and Upper), and Heavy (with Lower, Upper and Super). The rules are part of the RECAT-EU project, with the intention of squeezing more traffic into busy European Airports by applying more precise turbulence separation rules. The separation

minima are determined specific to each Aircraft Pair. For example, at the moment, an A330 following a B777 (Heavy behind heavy) requires 4 miles in trail. With the new rules, that is reduced to 3nm. An A320 can now follow 4 miles behind a B777, instead of the current 5nm. There are no Flight Planning Changes (continue to use /L,M,H,J for the ICAO Category). For crews, you'll notice the smaller separation, but there are no changes to callsigns or pilot obligations – for now. [Read full article.](#)

**DRRR/Niamey FIR** Air Traffic Control 48HR strike 24 and 25FEB. The ASECNA Contingency plan is activated, with ATC provided by neighbouring ACC's Dakar and N'Djamena.

**LTXX/Turkey** We have received several reports that Overflight Permits, which were removed as a general requirement for non-scheduled flights in 2015, are being requested by Turkey for Business Aviation aircraft, specifically M- and VP- registrations. Reports welcomed to clarify to [bulletin@fsbureau.org](mailto:bulletin@fsbureau.org).

**RCTP/Taipei** Airport works on several parking positions may create availability issues from 04MAR-04APR especially for Airbridge gates. Check with handler.

**LFPB/Paris Le Bourget** Due WIP airport will be closed during 10 nights from 15FEB to 26FEB, every night from 2045 to 0500Z. No Medevac flights will be possible.

**EPKK/Krakow** Runway 07/25 is closed daily 2330-0430 until 03MAR.

**UXXX/Simferopol FIR** EASA published an updated SIB 2015/16 regarding the use of Simferopol FIR on 17FEB. The key change is the phased reintroduction of the use of Simferopol FIR for international transit traffic, on the basis of an evaluation of the high seas portion of the airspace (ie. outside the 12nm territorial limit of the Crimean Peninsula). This airspace provides routes UL851 and UM856 (Odesa South Sector), which since 17FEB are suggested by EASA for use by overflying traffic.

**YMML/Melbourne** will host the Formula 1 Grand Prix 17-20MAR, with additional traffic to both YMML and YMEN/Essendon during these dates.

**EHAM/Amsterdam** has changed the callsign of Schiphol Start-up to "Schiphol Planner".

**OYAA/Aden, Yemen** Airport closed and all flights cancelled since 21FEB due to security concerns.

**NVTV/Port Vila** On 17FEB local officials signed an agreement with a private contractor to begin repairing the runway. Several airlines suspended flights on 23JAN due to safety concerns with the airport's runway. Aviation officials stated that the renovations should begin in March.

[View the full International Bulletin 24FEB2016](#)

---

# Midweek Briefing: Chinese Airport Delays, Eurocontrol NOP Changes

Cynthia Claros  
23 February, 2016



**Chinese Airport Delays** 03FEB ZXXX/China This is the busiest travel week of the year in China, with millions travelling for the Chinese New Year on 08FEB. Winter storms are forecast to impose delays across central Chinese airports; those currently affected include ZWWW/Urumqi Diwopu, ZSNJ/Nanjing Lukou, ZGGG/Guangzhou, and ZHHH/Wuhan Tianhe.

**Eurocontrol NOP Changes** 03FEB There are some significant changes to the daily Eurocontrol Briefings effective this week. Network News is no longer, and the D-1 daily conference is also gone. Instead, an Initial Network Plan is published each day at 1700Z on the **Network Operations Portal**.

---

**TTxx/Trinidad and Tobago** The annual Carnival in Port of Spain will take place on 08-09FEB . Travel and tourism activities are expected to continue for up to two weeks after the celebration and will be busiest during weekends. 10FEB (Ash Wednesday) is expected to be the busiest day of the year at the Port of Spain airport.

**EISN/Shannon FIR** Correction \*\* Due to a number of flights deviating from clearances prior to exiting Shanwick OCA, flight crews are reminded that Eastbound route clearances issued by Shannon Control for aircraft **exiting** Oceanic Airspace apply from AGORI, SUNOT, BILTO, PIKIL, ETARI, RESNO, VENER, DOGAL, NEBIN, MALOT, TOBOR, LIMRI, ADARA, DINIM, RODEL, SOMAX, KOGAD, BEDRA, OMOKO, TAMEL AND LASNO. Flights shall not turn **before** these points. In other words: wait until you enter (\*\* Thank you to Shannon ATC for pointing out the error in last weeks bulletin).

**North Atlantic** Effective 04FEB MNPS Airspace is replaced by HLA/High Level Airspace on the North Atlantic – extended with Bodø joining Shanwick, Gander, Reykjavik, New York, and Santa Maria. RNP4 or RNP10 now required. Read our **International Ops Notice 01/2016** or our blog post: **Did you know MNPS is over?**

**Eurocontrol NOP Changes** There are some significant changes to the daily Eurocontrol Briefings

effective 01FEB. Network News is no longer, and the D-1 daily conference is also gone. Instead, an Initial Network Plan is published each day at 1700Z on the Network Operations Portal.

**FMMM/Madagascar** CAA have issued a reminder to inbound operators that a Passenger List must be sent 24 hrs prior to departure for Madagascar, by email to [gdp@acm.mg](mailto:gdp@acm.mg).

**MKJK/Kingston FIR** Jamaica, has ongoing issues with radar coverage and serviceability, leading to ad-hoc flow management procedures including 15 minute en-route separation, and 10 minute arrival separation at international airports. Delays appear likely. Reports welcome to [bulletin@fsbureau.org](mailto:bulletin@fsbureau.org).

**FHAW/Ascension Island** is now operating at Rescue and Firefighting Category 8/RFF8.

**United Kingdom** Last week the UK Registered Traveller Service, which is the equivalent of the US Global Entry program, was expanded to include a few more countries: Hong Kong, Singapore, South Korea and Taiwan. Additionally, Bristol and Cardiff will be added to the list of participating airports.

**MUXX/Cuba** Flight crews of US based aircraft can now remain in Cuba with their aircraft when traveling to the island nation, instead of having to reposition immediately after offloading passengers. The change took effect on 27JAN, with new amendments to the Cuban Assets Control Regulations and Export Administration Regulations issued by the U.S. OFAC and BIS.

**NCRG/Rarotonga**, Cook Islands has new hours of ATC service: 2050 SUN-0400 MON, 1500 MON-1930 MON, 0530 WED-1400 WED, 2100 THU-1000 FRI, 2100 FRI-1000 SAT, 1400 SAT-1930 SAT, 0600 SUN-1130 SUN. These are UTC/Z Times, local is UTC-10. Raro is an important diversion airport in the South Pacific, especially for Easter Island and Tahiti. ATC is avail with 30 mins PN outside these hours (call +682 25890/71439).

**EHAM/Amsterdam** has raised the minimum vectoring altitude from 1200ft to 1600ft, which seems to spell an end to those super efficient 3 mile final approaches to 06. Still the best Terminal ATC in Europe.

**Europe** EASA has launched a 2 person cockpit survey to open discussion on the impact of their new recommended practice of always having 2 crew members in the cockpit.

**PKMJ/Majuro**, Marshall Islands – ExxonMobil will have no fuel during tanker replenishment, scheduled for 13-17FEB.

**ZXXX/China** This is the busiest travel week of the year in China, with millions travelling for the Chinese New Year on 08FEB. Winter storms are forecast to impose delays across central Chinese airports; those currently affected include ZWWW/Urumqi Diwopu Int'l, ZSNJ/Nanjing Lukou Int'l, ZGGG/Guangzhou, and ZHHH/Wuhan Tianhe.

**ENGM/Oslo** Oslo Airport has started supplying Air BP Biojet via its regular fuel hydrant system, naming three large European airlines as launch customers. It is now supplied from the main fuel farm, via common storage and distribution facilities, without the need for segregated infrastructure. Previously, it had to be provided by fuel truck.

**DNKK/Kano ACC** Nigeria, Area Radar Service is provided H24 from 04FEB.

View the full International Bulletin 03FEB2016