

# What's Happening at O'Hare?

OPSGROUP Team

21 February, 2022



If you're familiar with KORD/Chicago O'Hare Airport then you probably know that there are a lot of runways there. 8 if you're just counting strips of tarmac, 16 to be really specific.

You might also know that it has had some works done on its runways recently, so here is a look at *what's happened*, *what's coming next* and most importantly, *what to expect* if you're thinking of heading in there.

## The One that got Built

**Runway 9C/27C** opened on November 5th, 2020.

This is the last runway to be built as part of their modernisation program, and there is a very handy video on how it is being used, which you can check out here on the FAA's main 'Great Lakes (AGL) O'Hare Modernization Program (OMP) page.

## The One that got Extended

**Runway 9R/27L** has been extended, and it re-opened for operations on December 2, 2021.

Existing Runways	Length	Width	Year Opened
Runway 4L/22R	7,500 ft	150 ft	1943
Runway 9R/27L	11,260 ft	150 ft	1943 (extended 3,293 feet in 2021)
Runway 10L/28R	13,000 ft	150 ft	1968 (extended 3,000 feet in 2008)
Runway 4R/22L	8,075 ft	150 ft	1971
Runway 9L/27R	7,500 ft	150 ft	2008
Runway 10C/28C	10,800 ft	200 ft	2013
Runway 10R/28L	7,500 ft	150 ft	2015
Runway 9C/27C	11,245 ft	200 ft	2020
Closed Runways	Length	Decommission Date	
Runway 18/36	5,341 ft	9/29/2008	
Runway 14L/32R	10,005 ft	7/21/2016	
Runway 14L/32L	9,676 ft	3/29/2018	

The Rundown on the Runways.

### Which runway can you expect?

**Arrival operations on 9R/27R are currently limited**, and will remain so through at least the first half of 2022 while they get their ILS system fully setup and tested.

So, right now, they have the following operations planned for their daytime ops, which it might be worth familiarising yourself with if you're heading in, just so you know what to plan for.

#### When its a Westerly Flow:

**Landing:** 27R, 27C, 28C

**Departing:** 22L, 27L, 28R

#### When its a Easterly Flow:

**Landing:** They only use 3 runways at a time, but have multiple combinations:

9L, 10C, 10R (the top choice)

9C, 10C, 10R (the other top choice)

9L, 9C, 10C

9L, 9C, 10R

**Departing:** 9R, 10L



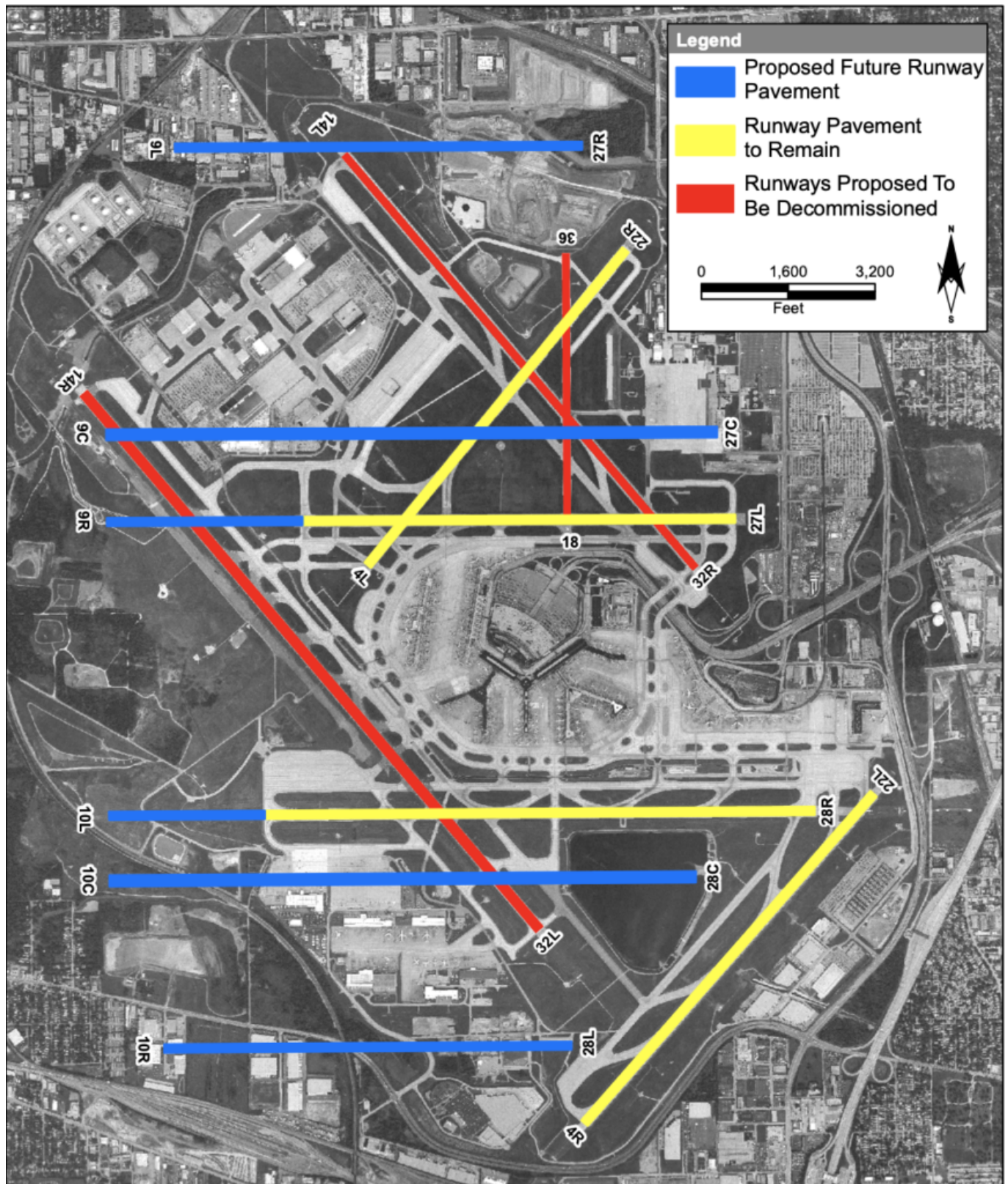


Diagram of runway plans

### Some non-operational (but interesting) facts:

**The O'Hare 21 plan** is hoping to create the *"most efficient and accessible gateway in the world."* A good plan given the airport hit a (pre-pandemic) record in 2019, with around 84.6 million passengers travelling through.

There are **193 gates available**, which sounds a lot, but bear in mind the majority of these are already

leased by the big hub carriers. Which leads us to the next point...

## Let's talk about the other options

**KORD/O'Hare is a massive hub airport** utilised by the major carriers. It is busy. The airspace is busy. To be honest, you probably don't fly in here unless you have a good reason to, like being a scheduled commercial carrier, if you like really busy complex airspace and taxiing.

The 'Chicago Square Mile' is the arguably the busiest bit of airspace in the world of arrivals and departures, but luckily there are some other airports in the area which you might want to look into, namely KMDW/Midway and KGYG/Gary.

## KMDW/Midway

The smaller, but by no means small KMDW/Midway airport is right next door. They have 43 gates and are **far more equipped for catering to General Aviation folk**.

The airport has **4 runways** laid out in a big cross (and one tiny fifth runway). One of the big threats here is the fact they cross and you need to keep a good look and listen out for traffic and avoiding runway hotspot incursions.

The **longest runway is 6522 foot** (1988m), and they have ILS CAT I available on three runways, and RNAV on pretty much everything else.

Runway	Length	Width	
Runway 4L-22R	5,507 ft	150 ft	General Aviation
Runway 4R-22L	6,445 ft	150 ft	Air Carrier
Runway 13C-31C	6,522 ft	150 ft	Air Carrier
Runway 13L-31R	5,141 ft	150 ft	General Aviation
Runway 13R-31L	3,859 ft	150 ft	General Aviation

The Midway runways.

## KGYG/Gary

And then there is Gary.

KGYG/Gary is also an **International airport** and a great one for corporate and "weekend" flyers heading to Chicago. It has an **8,859 foot runway** and is a '*full service*' airport. There are major airframe and engine maintenance facilities available, and ILS approach for runway 30, or RNAV for the others.

Gary is also **one of the newest CBP facilities** in northwest Indiana and the Chicago metropolitan region.

You will need to give them 24 hours notice, and can call them on **773-948-6330**. Customs is also limited to a total of 20 people per aircraft (that's crew and passengers).



Already a decent size, and plans to expand are not popular with locals.

### Send us your spies

Send us your Airport Spy reports for all these airports so we can share the gotchas, the things to know, contacts to contact and anything else useful.



Got some intel?

## Are you an Airport Spy?

You go to unusual places and see curious things. Your turboprop friends envy you. Now, it's time to give back.

For your next trip, pack a notebook, and file your Spy Report below. You'll get a weekly ops briefing in return.

[File your report](#) 

---

# Monday Briefing: NAT Track Changes, Russia-Ukraine airline ban

Declan Selleck  
21 February, 2022



# INTERNATIONAL BULLETIN

ISSUED BY FLIGHT SERVICE BUREAU

SITA HNLFSXH AKLFSXH AFTN KMCOXAAL

EMAIL INTL.DESK@FSBUREAU.ORG



**26OCT2015** In around two weeks time, significant changes will occur to the design and structure of North Atlantic Tracks (NAT OTS), which have existed in their current lateral structure since the OTS introduction in 1965. The key changes are: a reduction in separation to **'half-track'** compared to the existing structure, introduction of **24 new Oceanic Entry Points (OEP's)**, and a new requirement for **RNP4**. A special briefing on these changes is below.

**26OCT2015** With effect from yesterday, almost all Ukrainian and Russian airlines are barred from each others airports and airspace. Ukraine issued a sanctions list in September barring all except one Russian airline from operating, and in return Russia banned the three Ukrainian airlines from operating to Russia. GA, Business Aviation, and non-scheduled flights are not affected.

**EGPX/Scottish FIR** High delays this morning 26OCT in Scottish airspace due to ATC radio system failure. EGPF/Edinburgh airport departures were suspended, now resumed, with enroute traffic rerouted to avoid Antrim, Galloway, Tay, and Talla sectors. Situation is slowly improving but potential for afternoon delays exists.

**KORD/Chicago O'Hare** There will be a TFR in effect for Oct 27 and Oct 28 due to VIP movement. Please see NOTAM 5/1931 for further details.

**MMXX/Mexico** The impact of Hurricane Patricia was less than feared. MMPR/Puerto Vallarta Airport, MMZH/Ixtapa, and MMZO/Manzanillo have all reopened and are operating normally.

**KXXX/USA** Current runway closures: BWI-RWY 10/28 CLOSED, IAD-RWY 01R/19L CLOSED, DTW-RWY 03R/21L 09L/27R CLOSED, SEA-RWY 16C/34C CLOSED

**NAT/North Atlantic** ASD15 Exercise Trident Juncture (At Sea Demonstration) military exercise until 31OCT. The designated firing areas incorporate elements of Scottish FIR/UIR, Shanwick and Reykjavik FIR as well as notified UK Danger areas. Flight planning restrictions will be applied affecting NAT Traffic on northerly routes, monitor NOTAMs.

**South Pacific** Tropical Cyclone Season 2015-16 begins on 01NOV. Tropical cyclone warnings in the South Pacific region, please consult the Joint Typhoon Warning Center, Fiji's regional meteorological center

responsible for tropical cyclone warnings in the South Pacific region, or Australia's Bureau of Meteorology.

**View the full International Ops Bulletin for 26OCT2015.**