

Beijing Airport is filling up fast

David Mumford

9 May, 2019



There always seems to be some kind of random event going on in Beijing making life hard for GA/BA ops. This month it's the Conference on Dialogue of Asian Civilizations, and already the parking situation for GA/BA is starting to look pretty bleak.

ZBAA/Beijing

There are two main periods with heavy restrictions:

0800L on 13 May to 0800L on 17 May

0800L on 21 May to 0800L on 24 May

(Beijing local time is UTC+8, so you can read those times as 0000z).

During these periods, only one slot will be made available per hour for aircraft not connected with the event, and no overnight parking will be allowed. So that means short turnarounds might be possible, but you'll be lucky to get a slot.

Plus there's the other standard ongoing rule at ZBAA to keep in mind:

Daily between 0900-2200L, GA/BA can only make one movement per aircraft.

So this means that if you arrive during this period you then have to wait til 2200L before you're allowed to depart again! Confusing? You bet.

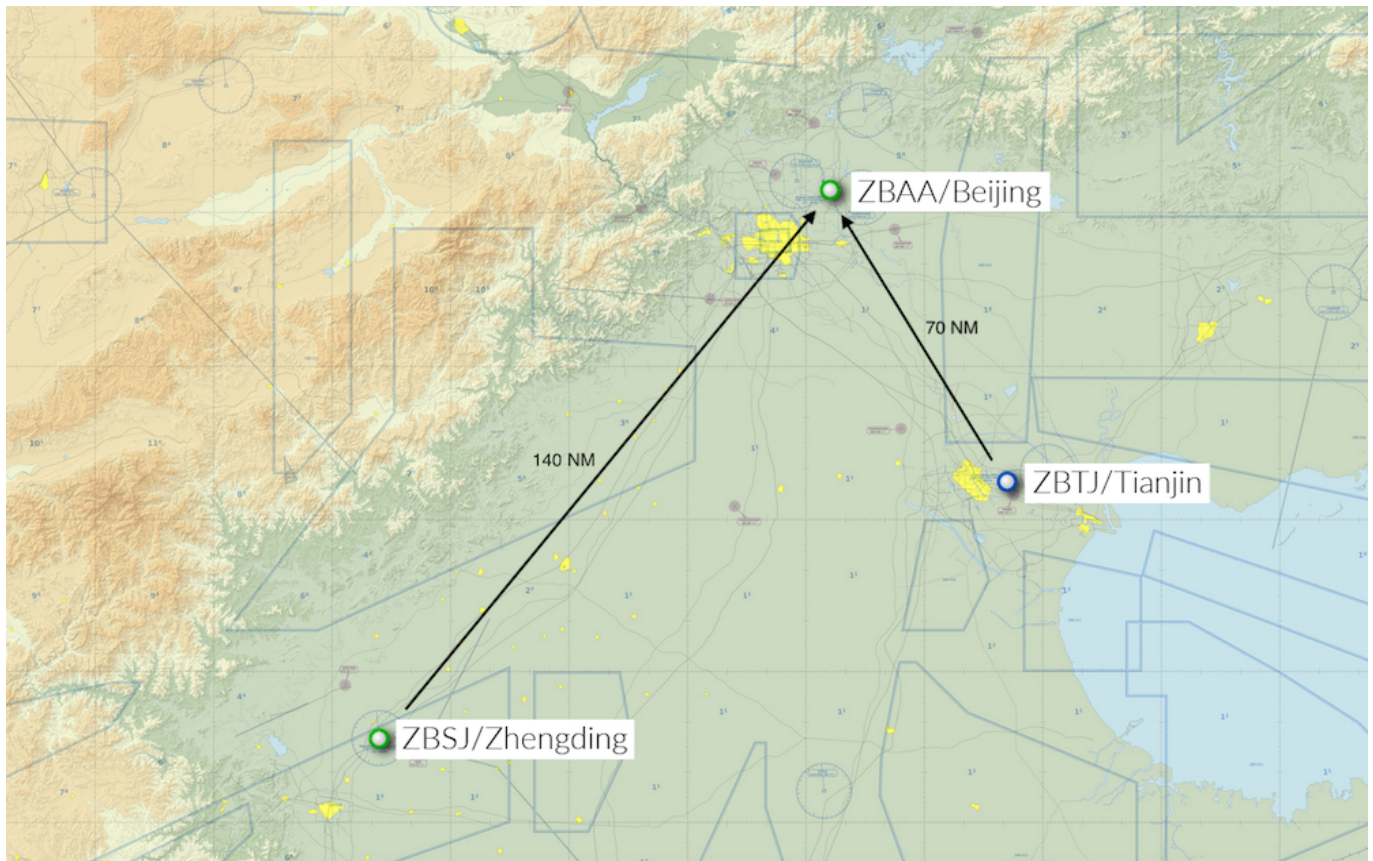
ZBTJ/Tianjin

Many operators like to use cheeky ZBTJ/Tianjin as an alternative to ZBAA/Beijing, but it's now getting busy here too. Local handlers here are saying that ZBTJ is not allowing any overnight parking for GA/BA at all right now, and even some requests for short-term parking are being denied as well.

This is related to ongoing construction work planned through to the end of June, which means a bunch of stands are closed, and with an influx of aircraft shifting over from ZBAA, there's less space all round.

ZBSJ/Zhengding

Where?? Fair question. We had to find it on a map. Zhending! Home to... well, not very much, by the looks of it. Unless temples, towers, and Olympic table tennis training centres are your thing.



But the good news is that the airport currently has no restrictions on GA/BA flights. Although they don't have an FBO or VIP lounge here (#notsurprised), the airport has a nice long 11,000ft runway, and is open H24. You can get in touch with Mainland GroundExpress to arrange handling here.

Beijing Airport Restrictions until September 6

OPSGROUP Team
9 May, 2019



Beijing is hosting the Forum on China-Africa Cooperation (FOCAC) on September 3 and 4, 2018.

As a result **ZBAA/Beijing Capital** airport **will not allow any GA/Corporate Jet operations** from Thursday, August 30 until Thursday, September 6 unless you are attending the forum itself. If you are, you will require a sponsor letter from the organizing committee to obtain landing permission.

Further restrictions:

- There will be **no take-off for all flights between 0700-0855L, strictly landing only.**

- A **maximum of two movements are allowed per hour for all flights between 0600-2355L.**
- Governmental flights require an authorization letter from the respective Embassy to arrange handling services.
- Flights with diplomatic clearance can still operate to ZBAA even if they are not attending the forum.
- **ZBAA cannot be used as an alternate** (except in an emergency) **until 6 September** (Refer NOTAM E1870/18).

Operators are advised to consider **ZBSJ/Shijiazhuang Zhengding** airport (139nm away) and **ZBTJ/Tianjin Binhai** airport (67nm away) as alternative destinations during this time period.



Do you know more? Let us know!

Beijing bans charter flights

David Mumford
9 May, 2019



ZBAA/Beijing airport authorities have said the airport is now so busy, they will not accept any new requests for charter flights between now and Mar 31, at the earliest.

No official document has been published on this yet, and the authorities have said it will not be published on the Notams either – but the new rule is already in effect.

For GA flights, the same rules apply as usual: maximum 24hrs parking, no ops allowed from 23-01z, and an aircraft cannot have two peak hour slots between 01-14z during one day. Many operators choose to go to ZBTJ/Tianjin instead, or ferry there for parking.

For more information on ops to China, download our Lowdown guide by clicking the image below:

The Lowdown on flight operations to CHINA Flight Service Bureau

World Ranking
 AIRPORT FEES: 118
 FUEL COST: 31
 AIR SAFETY: 29
 SECURITY: 67
 out of 173 countries*

CHINA
 AIRPORT WEATHER: The closer the airport, the bigger the issue.

HANDLING & FUEL
 Notes for all four airports: ZBAA, ZSPD, ZBAA & ZBTJ 24hrs required, and GA arrival are not permitted to land between peak hours (0700-0900 local).

PERMITS
 Permits for charter flights can be obtained in less than 24 hours. The lead time for charter flights is 7-10 days, and the CMC will require an extension of documents, including a charter agreement and a sponsor letter from a local marketing party.

DISPATCH NOTES
 Flight Information Regions:
 ZBTJ-Shanghai, ZSPD-Beijing, ZBAA-Shanghai, ZBAA-Fuzhou, ZBTJ-Lanzhou, ZBAA-Liuzhou, ZBTJ-Nanning, ZBTJ-Guangzhou, ZBAA-Sanya
 P/N: 2000000000 and 2000000000
 AND Tel: +86-10-6460-0211 (Beijing)

CHECKLIST
 Essential for Operating to China
☐ A sponsor letter is required for all flight types other than charter.
☐ GA arrival can only make one movement per day between 0900-2000 local at the country's five busiest airports: ZBAA, ZSPD, ZSPD, ZBAA, ZBAA.
☐ Charter must obtain slots in advance, category C slots usually only valid for 7 days.
☐ Foreign airlines are not permitted to operate charter flights between China and a third country.
☐ Slots, levels, speed or maxime per second, though allocated selling for landing is now China's own GPS.
☐ Direct flights between China and Taiwan are not permitted except for aerial registration to one of those two countries. If you're flying to or from Taiwan, you will have to completely avoid overflying or landing in China.
☐ Be aware of the latest flight changes that will be imposed on flight. More info: [here](#).
☐ For details on how to get your landing or overflight permits for China, along with entry other country in the world, check out our Permit Book [here](#).

China updates: ZBAA, ZBTJ, ZSAM

David Mumford

9 May, 2019



1. From now until the end of June, **ZSAM/Xiamen** airport will closed daily between 0010-0610 local time, and business flights will **not** be allowed to land or take-off between 0700-0900 local time daily as per the CAAC's regulation (the same regulation applies to over 20 other airports in China including ZBAA, ZSSS, ZSPD, ZGGG and ZGSZ).

2. **China's "two sessions" begins this week** - two big political conferences (CPPCC and NPC) that are held every year. **ZBAA/Beijing** gets busier than ever.

Even at the best of times, ZBAA only allows 24 hours maximum parking time for foreign GA, so expect to get sent to ZBTJ/Tianjin for parking: an Airport of Entry that regularly takes overflow traffic from Beijing.

As the nearest airport from ZBAA, ZBTJ is also accepting more ferry flights at the moment - the ZBTJ airport authority has been told to continue to do so until 30th April.

3. Be aware it's going to become more and more common this year for Chinese immigration to record fingerprints of foreign travellers who enter China via international airports.

Earthquakes: Japan & Ecuador, South

America - New Timezone: Midweek Briefing

20APR

Cynthia Claros
9 May, 2019

INTERNATIONAL BULLETIN	ISSUED BY FLIGHT SERVICE BUREAU
	SITA HNLFSXH AKLFSXH AFTN KMCOXAAL
	EMAIL INTL.DESK@FSBUREAU.ORG



Earthquakes: Japan, Ecuador 20APR Two large earthquakes struck Japan and Ecuador in the past week, with a longer term impact on International Flight Ops. RJFT/Kumamoto and SEMT/Manta are both closed UFN. [Read full article.](#)

South America - New Timezone 20APR In an unusual move, a new time zone will take effect in South America from the 1st of May. As part of a measure to battle an energy crisis in Venezuela, the entire country will change timezone from UTC -4h30 to UTC-5, to ensure more daylight in the evening when energy consumption peaks. **[Read full article.](#)**

EGLL/London Heathrow An A320 was struck by a drone on approach to LHR on 17APR. This is the first incident of its kind, though there have been many close calls to date.

FMZZ/Madagascar Cyclone Fanatala is currently north of Madagascar, the equivalent of a Category 5 Hurricane. It is expected to miss the island nation and the main airport of FMML but the close proximity of the cyclone to the island may cause flight disruptions.

BIKF/Keflavik beginning 01MAY, BIKF will be imposing a new Terminal Navigation Charge. This charge is to be applied to all flights arriving at BIKF. The airport authority has issued an Air Navigation Chargedocument to assist in determining the impact of the new fee.

LTZZ/Turkey. We've been alerted to a change in Overflight Requirements - aircraft with M- and VP-registrations, and any other countries without a bilateral agreement, require an Overflight Permit. See the new Turkey Lowdown for full information.

TIZZ/U.S. Virgin Islands authorities, assisted by the FBI, began investigating reports of a plot to attack airports on the Virgin Islands, notably the Terrance B. Lettsome International Airport (Beef Island Airport). The U.S. Coast Guard first received information of a terrorist attack plot circulating on social media. The threat focused on Terrance B. Lettsome International Airport but also mentioned airports on St. Croix, St. Thomas and St. John as possible targets. No information is available on what level of credibility authorities attach to these threats.

EBBR/Brussels A recent report from the Brussels Airport CEO has stated that EBBR will be 100% operational by the beginning of June.

EDNY/Friedrichshafen will be hosting the AERO 2016 exhibition from 20APR to 23APR. There is an expected increase in IFR traffic to the airport during the event. Please refer to NOTAM C0933/16 for further details.

LCCC/Nicosia FIR due to a Russian Navy Exercise and rocket test firings in the Mediterranean Sea, there are NOTAM'd route closures for W/UW17 from BALMA-NIKAS, R/UR78 and M/UM978 daily from 0500-1500Z on 21APR and 22APR. The NOTAMS covering the closure are A0308/16 and A0310/16.

SBZZ/Brazil The Canadian government has issued a helpful health notice for crew/passengers planning to travel to Brazil for the upcoming Olympic Games, which has advice on how to contend with the Zika virus.

MGZZ/Guatemala Volcano Santa Maria has had some recent high level ash dispersed into the atmosphere up to FL250. The Washington VAAC provides advisories and forecasts.

ZBAA/Beijing is not available for Non-Emergency diversions or planned as an alternate due to gate/stand shortage daily from 13-23Z daily until 28OCT16.

VIZZ/India The Government of India has introduced the e-TOURIST VISA (eTV) scheme for UK nationals travelling to India. All guests travelling under this scheme must carry a printed copy of the approved eTV for verification at the check-in counter prior to boarding.

WSZZ/Singapore the CAAS has issued 2 AIP supplements outlining the upcoming military exercise Bersama Shield 16. [AIP SUP 40-16](#) covers Kuala Lumpur and Singapore FIR airspace restrictions and AIP SUP 41-16 covers additional Singapore FIR airspace restrictions. The exercise will be running from 21APR to 28APR.

HSZZ/South Sudan The UK FCO has issued a travel warning against travel to South Sudan and in particular to Juba due to the return of the First Vice President as "tensions and disturbances" may increase across the country in the coming weeks.

FNZZ/Angola The CDC has upgraded the yellow fever in Luanda Province to an Alert Level 2. The government of Angola requires all travellers older than 9 months to show proof of yellow fever vaccination on arrival. In addition, CDC recommends that all travellers aged 9 months or older be vaccinated against yellow fever.

DNMM/Lagos a new protocol issued by customs and immigration officials is causing congestion in the arrival hall. There are 2 forms being given to passengers only once they enter the arrival processing area. Please ask your handler if these forms can be provided ahead of time.

View the full International Bulletin for 20APR2016

Monday Briefing: Cuba Travel opens up, Chile Airport strike ends

Declan Selleck
9 May, 2019

INTERNATIONAL BULLETIN	ISSUED BY FLIGHT SERVICE BUREAU
	SITA HNLFSXH AKLFSXH AFTN KMCOXAAL
	EMAIL INTL.DESK@FSBUREAU.ORG



Cuba Travel opening up 21DEC Negotiations between the USA and Cuba on scheduled air services between the two countries are progressing at pace; meaning that we expect to see sanctions on private US Tourism Travel lifted as early as next March. See more below.

Chile Airport Strike ends 21DEC A four day strike was ended yesterday 20DEC in Chile by the Trade Union, as 3000 Airport workers across the country responded to the governments rejection of a pension plan. Several hundred flights were cancelled. Non-scheduled operations were largely unaffected, but the risk of further action remains.

HUEC/Entebbe ACC, Uganda. ATC in Uganda is reporting a significant increase in the number of flights entering their airspace without prior coordination from Sudan and Congo (Khartoum and Kinshasa FIRs). Regional ATC in Africa is known to be challenging, but this warning deserves attention. Crews should make all efforts to contact each FIR 10 mins in advance – HF 11300, or relay on 126.9 if unable.

KZMA/Miami FIR SpaceX announced Sunday it has pushed back its planned launch of a Falcon 9 rocket with 11 communications satellites to 2033 ET Monday. KZMA has issued NOTAM A1357/15 for launch. It will also affect the KZJX Jacksonville FIR and TJZS San Juan FIR. The FAA will also issue tactical advisories regarding the launch and will most likely restrict operation on AR6 and AR15.

EGGX/Shanwick have issued a reminder to flights operating on the “Tango Routes” (T9, T16, T213) that HF in all cases is required to operate here, and crews should be trained in the procedures. Request OCA Clearance 50 mins in advance. Primary/Secondary HF freqs: Southbound 6547/8879, Northbound 8879/6547.

LIPH/Treviso Fuel spillage on the runway has closed the airport until 1700Z today 21DEC.

Cuba and USA Reports in the international media last week indicated that an agreement between Cuba and the US is likely to be signed early next year, allowing up to 110 scheduled flights: 20 to Havana, 10 to each of the other 9 international airports in Cuba. At present, US visitors must still fall in to one of the 12 official categories for authorised travel; however, once scheduled services are in place, we anticipate this to be the leverage to remove the final hurdle for US citizens – visiting Cuba for tourism. The first flights will likely operate in early March.

It should be noted that there are no restrictions on the Cuban side. US Aircraft can land in Havana with a routine **Landing Permit issued by IACC**, and US Aircraft can overfly with a routine **Overflight permit**. We anticipate that the requirement for a permit will stay in place as this is routine in most Latin American countries, primarily to check Navigation Fee debts and Operator Profile.

Georgia and Ukraine On 18DEC2015, the EC announced that both Georgia and Ukraine meet requirements for being granted visa-free travel to the European Union's Schengen zone. However, the European Parliament and the EU member states must vote in favor of granting Georgia and Ukraine visa-free travel before they are able to do so. Reports indicated that the decision could be put to a vote as early as 2016.

Haiti On 19DEC, election-related demonstrations across Haiti turned violent amid accusations of electoral fraud. Violent clashes led to the burning of several government buildings. Haitian police officers stated that they were trying to restore security to the country.

Space Weather/Polar Ops moderate an ongoing G1 geomagnetic storm expected for Mon, Dec 21. Please check the NOAA Space weather aviation dashboard for the latest actuals and predictions [HERE](#).

PAZA/Anchorage ARTCC has a number of new procedures and systems in place effective 17DEC, including 30/30 RNP4 separation, an update to the Track Advisory program for westbound Russian Tracks, and standard routings. Check the current PAZA NOTAMs for complete information.

ZBAA/Beijing authorities have issued a red alert for high levels of air pollution and reduced visibility. The alert will be effective until 22DEC. According to China's National Meteorological Center, air pollution levels are forecast to be slightly higher than those recorded from 06-09DEC.

EGLL/EGKK London Heathrow/Gatwick Airport train links will be disrupted over Christmas. The Gatwick Express trains will stop running for 10 days due to engineering works, with the last service of 2015 leaving Victoria station at 9.15pm on Christmas Eve and the first services of 2016 scheduled for 4 January. At Heathrow, the usual one-day closure on Christmas Day will be extended by three days. Neither Heathrow Express nor Heathrow Connect trains will run from London Paddington station during the period.

UBxx/Azerbaijan will become part of the IFPS (Integrated Flight Plan System) zone as of AIRAC 1601 on 07JAN2016. Azerbaijan will delegate responsibility for the provision of flight planning services for IFR/GAT flights within the Baku FIR to the Network Manager's Integrated Initial Flight Plan Processing System. For more info see Azerbaijan AIC 01/2016 Series A, AIP ENR 1.10, AIP ENR 1.11 and NOTAM A0126/15.

UHPP/Petropavlovsk FIR Volcano Karmasky has recently been active with ash reported up to 15,000 ft and possibly affecting ops on R220. Please check for the latest Tokyo VAAC advisories.

The ICAO Council adopted a new tracking standard for certain international flights that requires crews to report their aircraft's positions at least every 15 minutes. It will become effective in March 2016 and applicable 08NOV2018. The new requirement also will be formalized as Amendment 39 to Annex 6—Operation of Aircraft, Part I. Only aircraft with a maximum takeoff weight of more than 59,000 pounds and a passenger seating capacity of more than 19 are affected by the rule. Also, the requirement applies to over oceanic and other remote areas, and where air traffic service is obtaining position information

greater than 15-minute intervals.

Christmas and New Years closures. Check opening times carefully during the next 2 weeks, as many major airports and FBO's have closures, especially on 24, 25, 26DEC and 31DEC/01JAN.

Monday Briefing: Russian overflights of Ukraine now prohibited, EUR: TCAS 7.1 Compulsary

Cynthia Claros
9 May, 2019

INTERNATIONAL BULLETIN	ISSUED BY FLIGHT SERVICE BUREAU
	SITA HNLFSXH AKLFSXH AFTN KMCOXAAL EMAIL INTL.DESK@FSBUREAU.ORG



All Russian overflights of Ukraine now prohibited 29NOV In a development of the dispute between Russia and Ukraine regarding traffic between the two countries, Ukraine has extended the original ban (which affected specific Russian Airline only) to all Russian registered Aircraft Operators. Notam 2604/15 issued last Wednesday has the specifics.

EUR: TCAS 7.1 Compulsary 01DEC The EASA Mandate for compulsory carriage of TCAS version 7.1 (with changes to "Adjust Vertical Speed" RA and resolution of "Reversal RA" problems) is 01DEC. All operators must have 7.1 on board. Note that this applies also to EU Territories abroad, eg. New Caledonia, Tahiti.

OYSC/Sanaa FIR We've received input from a number of US Airlines that although Yemeni landmass airspace is prohibited, operations through the OYSC/Sanaa FIR Oceanic portion are available in accordance with FDC5/5575.

NZAA/Auckland is closed every Monday morning 0130-0430LT for runway maintenance. However, Robin Leach at Air Centre One notes that several aircraft have departed for Auckland with an arrival time during this period resulting in airborne holding. Part of the issue is that a NOTAM is only issued if the work is cancelled; otherwise the (hard to spot) AIP/IFG notes for Auckland apply.

ZBAA/Beijing Chinese Authorities have issued an 'orange level' alert for smog on Sunday, with reports that visibility in places is down to a few hundred feet. This alert requires industrial plants to reduce or shut down production. With the current temperatures, Freezing Fog is affecting operations at Beijing Airports.

North Atlantic First day with the new NAT Tracks structure will be 01DEC per advice from NATS and Nav Canada, reporting that previous IT issues with the new tracks have been resolved.

Spain The National AFTN COM Centre is out of action for a few hours on Monday night (after 2100Z), meaning that FPL filing and other AFTN based messaging will be affected for Airports in Spain and the Canary Islands.

Bermuda Transatlantic Operators should note in addition to the new track structure on 01DEC, that Bermuda will be without radar coverage for the afternoon (1200Z-1600Z), and the National Authority there is recommending to avoid Bermuda airspace. A limited non-radar service will be provided, and only airways L459, 461, and 462 are useable if you do overfly. Refer to KZWY A0461/15 for more.

EINN/Shannon is again closed for maintenance this Monday night 01DEC, 2145Z-0500Z; use alternate diversion alternates!

EGLL/London Heathrow has a high risk of regulation for Mon, Nov 30th from 0540-2200Z due to strong winds. Please plan fuel accordingly for possible airborne delays.

HLLL/Libya FIR Due to the recent escalation of the Libyan Crisis all Italian aircraft operators have been prohibited from flying through HLLL FIR. Prior Permission to operate into HL available aerodromes also requires Prior Permission by the Libyan CAA. REF NOTAM A8382/15 which replaced A5637/15.

LFRR/Brest FIR Training and stepped implementation of the ERATO paperless strip system in Brest FIR commenced on 24NOV and will last until 18DEC with significant capacity reductions. A transition period with capacity reductions will follow from 19DEC; this may potentially extend into Summer 2016. Moderate and (in some case) high delays may be expected daily, depending on the sector configuration provided.

LTxx/Turkey In response to the downing of a Russian Fighter Jet, Russia will be suspending the Visa-Free Travel program between the countries effective 01JAN2016.

VICG/Changigarh The new Chandigarh international airport which was originally scheduled to close for runway resurfacing which was estimated to take approx a year will in fact now remain open during the construction. Work to resurface the runway will take place without disturbing the flight operations there.

EIDW/Dublin The DAA and IAA are currently exploring a further reduction in SID separation to 75 seconds (following aircraft given take-off clearance when preceding aircraft reaches 1NM past DER). Ongoing AIM is to reduce further to 60 seconds if possible.

MKJS/Montego Bay The operator of Sangster International Airport, MBJ Airports Limited, Announced that, effective 24NOV, electronic boarding passes will be accepted as part of the security screening process.

DNxx/Nigeria The Nigerian Civil Aviation Authority, NCAA, suspended some oil marketers from supplying Jet A1 to airlines due to a lack of depot facilities. The affected marketing companies include Jushad Oil and Gas Limited, Lubcon Limited, Ascon Oil Company Limited, Acon Petroleum Limited and Star Orient Aviation Limited.

FQNC/Nacala, Mozambique Mozambique's airport management company AdM stated on 24 November 2015 that Nacala Airport is expected to receive the proper certification to service international flights by December 2015. International airlines can begin using the facility by March or April 2016. Nacala Airport was a former military airbase and it opened as a civilian facility in December 2014. However, to date, the airport has only been permitted to service domestic flights.

View the full International Operations Bulletin for 30NOV2015