

# Bizav Clampdown at Amsterdam

Chris Shieff

15 October, 2023



**From March 2024, the number of slots available for GA/BA at EHAM/Amsterdam Schiphol will almost halve.** And apparently, it's just the tip of the iceberg – the ultimate goal is for them to be banned altogether.

Just like with Portugal's new Bizav Punishment Tax, the small jets are getting the big heat – often unfairly.

## Go Away, GA...

The news came out in the airport's latest capacity declaration – the maximum number of 'small business aviation' flights will be **capped** at 12,000 next year (down from 17,000).

It's all part of a master plan that Schiphol announced back in April to make the airport 'quieter, cleaner and better.'

The biggest news is that a **complete ban on business aviation** is planned from 2025. And until then, GA/BA will increasingly feel the squeeze.

## So, what happens after the ban?

With no more slots available to business jets, operators will need to look elsewhere. Here are the **current closest alternatives** with customs:

- **EHRD/Rotterdam** (24nm) – For handling, contact: Jet Aviation FBO, [rtafbo@jetaviation.com](mailto:rtafbo@jetaviation.com)
- **EHEH/Eindhoven** (56nm) – For handling, contact: Viggo Eindhoven, [info@viggo.eu](mailto:info@viggo.eu)
- **EHGG/Groningen** (82nm) – For handling, contact: Ground Ace, [info@groundace.eu](mailto:info@groundace.eu)

Across the border, don't forget about **EBBR/Brussels** either.

## Look out for other restrictions too

**1. Night curfew:** The same plan includes banning all aircraft movements between midnight and 6am (5am for departures). This will severely restrict available slots for late evenings and early mornings.



A night curfew is coming to Schiphol soon too.

**2. No new runway:** The airport has decided that the existing six runways should just about cover it. Plans have officially been scrapped for lucky number seven – a twin sister for Kaagbaan (yes, the runways have names!)

**3. Noisy rides:** From this coming Summer, Schiphol has announced that eighty-seven aircraft types will no longer be welcome. The good news is most of them are old.



A large number of older, noisier aircraft will be banned from Schiphol next year.

**4. Airport fees:** The quieter and cleaner your ride, the cheaper the airport fees will be moving forward. Operators using louder and more polluting aircraft will pay up to five times as much.

### **I want to go to Schiphol anyway**

The doors haven't quite closed on business aviation just yet. But with the new capacity restrictions, slots are going to be hard to come by – so **get in early**.

The latest guidance of how it all works, along with fees and charges can be found in Schiphol's latest charges and conditions doc.

---

## **What's going on at Schiphol?**

Chris Shieff  
15 October, 2023





In the past few weeks and months, we've been reporting on delays at major European airports. But one in particular has been making headlines more than any other – Amsterdam's **EHAM/Schiphol**.

Overcrowding and understaffing have been causing multi-hour queues to clear security, or collect baggage. In fact, things have gotten so bad that airport authorities previously closed roads and asked major carriers to cancel their flights there. And it looks like there is more to come.

But why Schiphol, and why now? There's more to it than simply the Northern Summer. Let's take a closer look at what's happening there.

### **The Perfect Storm**

The trouble at Schiphol is a unique brew of delay-inducing ingredients, all happening at the same time:

- Industrial action
- Surging demand
- Staffing
- Weather

### **Strikes**

On April 23, airport staff went on an unannounced strike which brought ops to a grinding halt for several hours. The airport became **overcrowded** with passengers unable to travel, and authorities scrambled to close road access to the airport before things got any worse.

The news is that this may be about to happen again. A major union of airport workers (FNV) has announced their intention to strike from June 1 over pay and conditions – the impact could last for several days.

### **Crowds**

It's good news for the industry, but not so much for airports struggling to play catch-up. EHAM/Schiphol is one of the busiest airports by pax numbers in Europe, based on the latest stats. It's streaks ahead of

Frankfurt, Munich and even big hitter, Heathrow.

All those passengers are causing a log jam, and some aren't happy about it. On May 22, news broke that a threatening security situation developed at security by passengers stuck in forever-queues, when staff began to feel unsafe – some even walked off the job. Military police were called in to calm the situation down before processing resumed. Which brings us to the next issue – staff, or **lack thereof**.

## **Getting more people**

With Covid restrictions easing, passenger levels are steadily increasing, but staffing levels are lagging behind – it takes time to find and train new manpower. It is an emerging problem in a resurgent industry, with airports across the globe reporting similar problems. It seems that Schiphol is one of the worst affected.

## **Those Pesky Clouds**

Talk about the straw that broke the camel's back, but the weather has also been playing a role. Or more specifically, clouds have been.

On May 24, Eurocontrol reported that low clouds were delaying inbound flights due to arrivals being regulated with holding or other delaying actions. Perhaps the only good news is that summer is just around the corner, and with it, better conditions for flying.

## **Outlook**

With the crowds going nowhere, and strikes on the horizon, it seems things will get worse before they get better. While impacts on the ground may be bigger for scheduled operators, airborne delays affect everyone.

## **What are the alternatives?**

The good news is that there are a couple of good options nearby which may keep you clear from the log jam.

### **EHRD/Rotterdam**

It's only 24nm away, and about a fifty-minute drive to Amsterdam Central. It's the nearest international option with customs.

Handling:

- *Aviapartner* rtm.handling.ops@aviapartner.aero +31 10 238 27 00
- *Jet Aviation Rotterdam* rtmfbo@jetaviation.com +31 10 298 49 49

### **EHEH/Eindhoven**

A little further afield at 56nm, about an hour and fifteen minutes on the road.

Handling:

- *Viggo Eindhoven Airport*: info@viggo.eu +31 40 258 11 58

## Stay updated

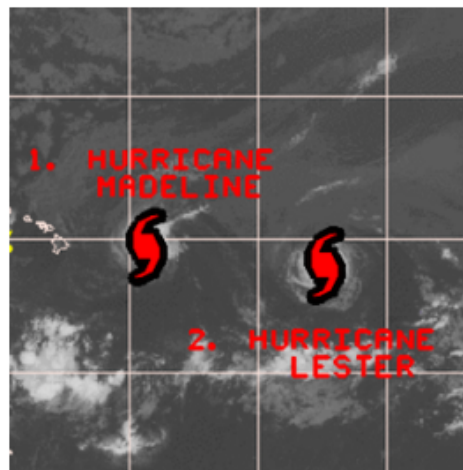
For major delays, the best place to stay informed is the Eurocontrol website here, which is updated around the clock.

---

# Midweek Briefing: End of Canada Leniency, Two hurricanes inbound Hawaii

Cynthia Claros  
15 October, 2023

INTERNATIONAL BULLETIN	ISSUED BY FLIGHT SERVICE BUREAU
	SITA HNLFSXH AKLFSXH AFTN KMCOXAAL
	EMAIL INTL.DESK@FSBUREAU.ORG



**End of Canada Leniency** 31AUG Earlier this year Canada introduced a requirement for an eTA – like the US Esta. For a while, it was OK to travel without one. **That's ending in September** ... Read the article

**Two hurricanes inbound Hawaii** 31AUG Madeline is first, followed by Lester – both are tracking west towards Hawaii with landfall expected – should it occur – on Wednesday and Thursday. Read the article

---

**LTCC/Diyarbakir, Turkey** Kurdish militants fired rockets at Diyarbakir Airport in southeastern Turkey. The militants reportedly targeted a security check-point outside the airport lounge. All personnel were taken inside terminal building for safety reasons. No flights were disrupted, and there were no reports of casualties.

**EHAM/Amsterdam** It's that time of year again, watch out for the migrating geese in Amsterdam at sunrise and sunset. They operate between 300 and 700ft without transponder.

**VVVV/Hanoi FIR** If you're cutting a line through the Hanoi FIR on the W1 airway, you'll be held down at FL290 unless you have RNAV5. ATC says so.

**DNZZ/Nigeria** Members of aviation unions staged rallies at four major airports in Nigeria to protest the planned concession of the facilities to private investors. Protests occurred at Abuja (DNAA/ABV), Kano (DNKN/KAN), Lagos (DNMM/LOS) and Port Harcourt. So far, the protests have not disrupted ops. Lagos has been suffering from some power outages lately as well.

**SOCA/Cayenne, French Guyana** has staff shortages, and from September 1st will not accept any diversions unless in an emergency. Do not plan SOCA as an enroute alternate. If inbound, with an ETA for SOCA 0200-1100Z, you need to call for an arrival slot. If you need it, ATC phone is +594 594 35 9372 or 9302.

**OIZZ/Iran** has approved the use of its airbases by Russian fighter aircraft; Russia has notified intention to launch missiles in the direction of Syria from the Caspian Sea fleet. The Russian Air Force has deployed six Tu-23M3 BACKFIRE bomber aircraft and multiple Su-34 FULLBACK strike fighter jets to Hamedan Air Base (OIHS/NUJ).

**ORBB/Baghdad FIR/Iraq** The Iraqi government has given permission to the Russian MoD to use its airspace in support of air operations in Syria. Russian media outlets are also reporting the Russian MoD has requested use of the FIR for the “passage of cruise missiles” as well, highlighting the potential for such activity to occur in the coming days from the airspace over the Caspian Sea.

**LTZZ/Turkey** Russia has lifted it's ban on charter flights to Turkey.

**HAZZ/Ethiopia** Reports indicate that flights to HAGN/Gondar (GDQ) and HABD/Bahar Dar (BJR) have been indefinitely suspended. The suspension of flights comes amid ongoing unrest in Gondar and Bahir Dar, as well as in other cities in the Amhara and Oromia regions, over the marginalization of ethnic groups by the Tigray-dominated Ethiopian People's Democratic Front (EPRDF) regime. Ethiopian government officials have not commented on the cancellation of flights to those cities or international flights to Addis Ababa, which has not been largely affected by the unabated unrest occurring in outlying regions.

**WSSS/Singapore** air quality has deteriorated to a Pollution Standards Index (PSI) of 105, due to the cross-border haze from Indonesian slash-and-burn fires. The agricultural practice, during which farmers burn a patch of land in order to clear land for new crops, creates haze, which then drifts through the region. Experts believe the level of pollution — which in 2015 cost the region more than 700 million US dollars in damage and severely disrupted the aviation sector — will be lower in 2016 due to a rainy dry season.

**NFNA/Suva, Fiji** is closed during September for runway repairs. Available with 30 mins PN in an emergency. Call them on 9906102.

**SUEO/Montevidedo** Air Traffic Controllers strike until end of September, closures and departure restrictions in place. Info is sketchy, got some updates? Let us know ... [bulletin@fsbureau.org](mailto:bulletin@fsbureau.org).

View full International Bulletin 31AUG2016

---

## Midweek Briefing 04MAY: New US CBP Airport, Iceland ATC Strike continues

Cynthia Claros  
15 October, 2023

# INTERNATIONAL BULLETIN

ISSUED BY FLIGHT SERVICE BUREAU

SITA HNLFSXH AKLFSXH AFTN KMCOXAAL  
EMAIL INTL.DESK@FSBUREAU.ORG



**New US CBP Airport** 04MAY A new US Customs facility opened in KMT/ Marathon on 20APR, to facilitate increased traffic to Cuba. Read the article.

**Iceland ATC Strike continues** 04MAY Icelandic controllers are in a pay dispute with Isavia, leading to multiple strike actions at BIKF/Keflavik and BIRK/Reykjavik. Last week BIKF was closed overnight at short notice. Read the article.

---

**EHAM/Amsterdam** and other Dutch airports will observe a two minute silence on ATC frequencies today, 04MAY, from 1800-1803Z. ATC will arrange traffic flow so that no aircraft will land or taxi during this period, meaning likely delays, albeit for a short period.

**SECU/Cuenca, Ecuador** remains closed after an E190 slid off the main runway on 29APR, latest estimate is no reopening before 06MAY.

**CZZZ/Canada** Visa-exempt foreign nationals can enter and exit Canada by air without an Electronic Travel Authorization until 29SEP2016. After that date, these travelers will need to obtain online authorization to visit.

**BIZZ/Iceland** Multiple ATC Strike actions for BIRK and BIKF are ongoing, check NOTAMS and with handler for latest. **Read article.**

**TFFR/Guadeloupe** has ongoing main runway closures due to WIP, current shown are 04MAY 0200-1015Z, 17MAY 1000Z- 18MAY 1600Z. Only helicopters will be allowed to operate during these periods.

**UIBB/Bratsk** has a fuel shortage until 31MAY, non-scheduled movements are by PPR only.

**NWWW/Tontouta** has an ATC staff shortage and requires slots for arrival until 31MAY, Tel +687 352437. Work on 11/29 is also ongoing, check NOTAMS for any current outages, which will close the airport.

**EGGX/Shanwick** is trialling transferring westbound flights direct to a HF frequency rather than via an initial VHF frequency, using CPDLC. The default frequencies will be HF 5649 H24, 2872 0000-0900 and 1800-2400, and 8879 0900-2100.

**PAZA/Anchorage** has published new procedures Eff 28APR for User Preferred Routes within the PAZA FIR,



refer A0075/16.

**SVZZ/Venezuela** changed timezones on 01MAY to UTC-4. In addition, all public offices, including public ministries, will only operate on Mondays and Tuesdays until further notice.

**TTZP/Piarco FIR** is trialing ADS-C and CPDLC with ident TTZP until 31MAY. Flights entering the FIR east of 57W should log on 15 minutes prior to the boundary with TTZP.

**UHSS/Yuzhno** has advised that B777 aircraft are limited to 310T during the summer period.

**UIAA/Chita** is only available as alternate for one specific airline (Aurora) between 0930-2100Z. Outside these times ops normal.

**WSZZ/Singapore** has introduced a fingerprint clearance system to verify the thumbprints of arriving and departing travelers ages six and above at select immigration checkpoints. The system will be progressively implemented starting at the manned immigration counters of sea and land checkpoints, followed by air checkpoints until full implementation is completed in the months ahead. Travelers should be prepared for slightly longer immigration clearance times at manned checkpoints, especially during the initial implementation stage of the project.

**YZZZ/Australia** Border Force employees have been banned from taking industrial action at airports for three months; the threat of ongoing strike action caused much concern for operations in March.

**RJTT/Haneda** the airport authority has changed the number of slots available for general aviation aircraft. Effective 25APR, slots for GA during the daytime (0600-2259 local) will be increased to 16 total for arrival and departure (from eight in the past). Note that there are no slots restrictions for night time operations (2300-0559 local).

**CYVR/Vancouver** will have one of its main runways 08R/26L closed nightly between the hours of 05-13Z 08MAY-02SEPT for construction. During the day (13-05Z) the runway will have the ILS on 08R/26L out of service, along with no approach lighting on runway 26L.

**SLZZ/Bolivia** Certain medications prescribed for personal use are treated as narcotics in Bolivia, with severe penalties for import or export without a valid prescription from a doctor; make sure you carry a letter from a doctor describing the medical condition and any prescribed drugs and that they are in their original containers and clearly labelled.

**EBBR/Brussels** has partially reopened the departure hall, which has remained closed since 22MAR. 110 Check-in counters will be open in the airport departure hall along with an additional 36 counters that are housed in temporary buildings. The EBBR airport authority expects this will bring the airport up to 80% of capacity.

**EZZZ/Europe** Bulgaria, Turkey and Romania will begin a project to interface their ATC systems so they can handle a significant build-up of airspace traffic in the Black Sea area. New routes are expected by mid 2016.

**LEZZ/Spain** The Spanish F1 Grand Prix is being held from 13MAY-15MAY and will bring heavier than normal traffic to LEBL/Barcelona and LEGE/Girona.

**HEZZ/Egypt** Individual travellers will in the future require a visa before entering Egypt. The exact date of the implementation of this rule is not yet determined. The visa must be applied for from the Egyptian embassy and the consulate generals before departure.

**GVZZ/Cape Verde** Aviation officials issued a statement announcing that national airports are open and operational. The statement was released following reports that flight operations had been suspended at the country's airports.

**ORZZ/Iraq** Iran canceled all flights to Baghdad following a breach of the International Area by protesters on 30APR. The demonstrations have caused problems for pilgrimage flights to Baghdad, and those flights will operate instead to ORNI/Najaf.

**VIDP/Delhi** has opened a new ATC tower (which is the country's tallest at 60 metres). VIDP will also be starting construction on a 4th runway this year and is expected to be completed by 2018 which will increase the airport arrival rate to 105 landings an hour, and will mitigate the common airborne holding.

View the full International Bulletin for 04MAY 2016

---

## MHTG 'Interesting Approaches' to end, Greeks or Italians? ATC strikes:

Cynthia Claros  
15 October, 2023

**INTERNATIONAL  
BULLETIN**

**ISSUED BY FLIGHT SERVICE BUREAU**

SITA HNLFSXH AKLFSXH AFTN KMCOXAAL  
EMAIL INTL.DESK@FSBUREAU.ORG



**MHTG 'Interesting Approaches' to end** 06APR MHTG/Tegucigalpa Dangerous approaches at MHTG will be consigned to history, as a new airport was finally confirmed at the weekend by the Honduran government. **Read the full article.**

**Greeks or Italians? ATC strikes this week** 06APR There will be an ATC strike this week in Europe, maybe by Greece, maybe by Italy, maybe by both. These strikes are often cancelled shortly before starting, but at this pre-planning stage, it seems likely to go ahead. **Read the full article.**

---

**EBBR/Brussels** has now reopened but operations are still very restricted. The airport is not expected to

be fully operational until June or July by current estimates. The airport authority has instituted new security measures that include a requirement for passengers to arrive 3 hours prior to their departure time. The terminal is still closed to busses and trains. Slots must still be requested from the Brussels Airport Authority if you intend to operate in or out of EBBR.

**ZKPY/Pyongyang FIR** Many reports that North Korea is jamming GPS signals, also reported by South Korea RKRR NOTAM A0450/16. Signals have been reported as unreliable or lost when operating in or near to North Korean airspace. Exercise caution if you rely on GPS in those areas. Read our DPRK Overflight Risk article from a few weeks ago.

**LIZZ/Italy Eurocontrol** has confirmed an Italian ATC strike is set for April 9th. NOTAMS A2062/16A2 and A2063/16A2 have been issued covering the proposed strike.

**MHTG/Tegucigalpa** Dangerous approaches at MHTG will be consigned to history, as a new airport was finally confirmed at the weekend by the Honduran government. Full article [here](#).

**LFXX/France** an Operational Trial of CPDLC Services in French Airspace of Reims (LFEE), Paris (LFFF) and Marseille (LFMM) ACC will be in effect from 05APR to 11APR.

**EZZZ/Europe** The U.S. State Department along with numerous other countries have issued a Europe wide travel warning in response to the attack in Brussels. While extra vigilance should be exercised it is also a very generic response to a threat that has yet to be fully understood from a commercial aviation perspective. If you would like to be kept up to date on specific travel alerts from the U.S. State Department you can sign up through their STEP program.

**EHAM/Amsterdam** reports of near misses with drones have recently been reported by crews. The location of the near misses was on the approach path but no specific runway was mentioned.

**KEWR/Newark** The FAA will be increasing the number of available slots to EWR, available at the end of October. The change is in response to the improved efficiency of the airport and the ability to increase the ATC arrival rate.

**FAA/United States** has issued Advisory Circular 00-30C. It describes the various types of CAT (Clear Air Turbulence) along with avoidance techniques and possible future forecast systems for helping Dispatchers and Pilots in the planning stages.

**KZZZ/USA** Check your passport! Effective 01APR16, if you're travelling to the United States under the Visa Waiver Program, you will also need to have a valid **e-Passport** along with your ESTA.

**CZVR/Vancouver** ACC will begin to use ADS-C on 18APR In their Oceanic sectors, for both alerting service (SAR) and improved ATC separation purposes.

**UDDD/Yerevan FIR** Due to Air Defence activity ATC route segments with Yerevan FIR Crossing FIR boundary points MATAL, ELSIV, PEMAN and VETEN between Yerevan FIR and Baku FIR are not available.

**UBBA/Baku FIR** Entry/Exit points VETEN, PEMAN, ELSIV, MATAL are closed.  
Baku FIR Entry/Exit points BARAD, DISKA closed from GND to FL305.  
NOTAMS A0030/16 and A0032/16 have been issued as well.

**UHSS/Yuzhno** will be closed daily 10APR-14MAY between the hours of 12-21Z.

**OMZZ/United Arab Emirates** will begin charging a \$9.50 USD Passenger Tax effective 30JUN, to be imposed on all travellers over the age of 2 through all airports including those only transiting the UAE. A driving factor in this new charge appears to be low oil prices affecting the Gulf States.

**UZZZ/Russia** has stated that aviation authorities are intensifying its ramp inspections of all aircraft (especially foreign aircraft, we guess) in the wake of the Rostov accident.

**FZZZ/Nigeria** The Nigerian National Petroleum Corporation has stated that steps are currently being taken to end the countries fuel shortage, but may take upwards of 2 months. We suggest to check with local handlers for the availability aviation fuel supply until the issue is resolved.

**VNKT/Kathmandu** We have received some reports that VNKT ATC weather reports are inaccurate, especially regarding visibility. Any feedback please let us know.

**VIAR/Amritsar** has suspended all night operations for 1 year due to the planned reconstruction of the airports runways.

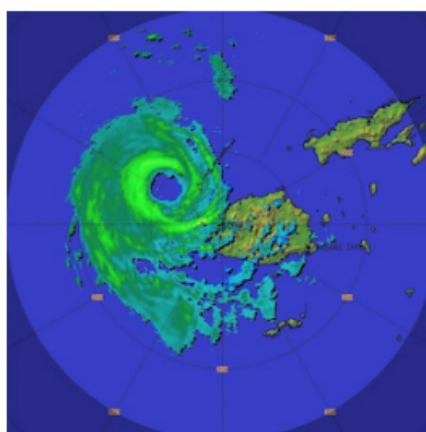
View the full International Bulletin for 06APR2016

---

## Midweek Briefing: New Wake Turbulence Categories, Fiji Cyclone Winston

Cynthia Claros  
15 October, 2023

INTERNATIONAL BULLETIN	ISSUED BY FLIGHT SERVICE BUREAU
	SITA HNLFSXH AKLFSXH AFTN KMCOXAAL
	EMAIL INTL.DESK@FSBUREAU.ORG



**New Wake Turbulence Categories** 24FEB New Wake Turbulence Categories will begin a slow introduction in Europe on 22MAR at Paris Airports LFPG/De Gaulle and LFPB/Le Bourget, where the current four (Light, Medium, Heavy, Super) will become six. Those six new categories are Light, Medium (with Lower and Upper), and Heavy (with Lower, Upper and Super). Read the full article ...

**Fiji Cyclone Winston** 24FEB Fiji sustained widespread damage throughout the Islands on 21FEB from Tropical Cyclone Winston; most airports are open and operating again, including all international airports (NFFN/Nadi, NFNA/Suva). The following domestic airports are also open: Kadavu, Labasa, Rotuma, Labasa, Rotuma, Gau, Kadavu. NFNA/Suva has no overnight parking available at present due to congestion caused by the Relief effort.



---

**NFFN/Nadi, Fiji** Hit by Tropical Cyclone Winston on 21FEB, while there is widespread damage throughout the Islands, most airports are open and operating again, including all international airports (NFFN/Nadi, NFNA/Suva). The following domestic airports are also open: Kadavu, Labasa, Rotuma, Labasa, Rotuma, Gau, Kadavu. Note that NFNA/Suva has no overnight parking available at present due to congestion caused by the Relief effort.

**KAGS/Augusta, USA** Special Procedures in place 07-10APR for US Masters Golf Tournament.

**EXXX/Europe** New Wake Turbulence Categories will begin a slow introduction in Europe on 22MAR at Paris Airports LFPG/De Gaulle and LFPB/Le Bourget, where the current four (Light, Medium, Heavy, Super) will become six. Those six new categories are Light, Medium (with Lower and Upper), and Heavy (with Lower, Upper and Super). The rules are part of the RECAT-EU project, with the intention of squeezing more traffic into busy European Airports by applying more precise turbulence separation rules. The separation minima are determined specific to each Aircraft Pair. For example, at the moment, an A330 following a B777 (Heavy behind heavy) requires 4 miles in trail. With the new rules, that is reduced to 3nm. An A320 can now follow 4 miles behind a B777, instead of the current 5nm. There are no Flight Planning Changes (continue to use /L,M,H,J for the ICAO Category). For crews, you'll notice the smaller separation, but there are no changes to callsigns or pilot obligations – for now. Read full article.

**DRRR/Niamey FIR** Air Traffic Control 48HR strike 24 and 25FEB. The ASECNA Contingency plan is activated, with ATC provided by neighbouring ACC's Dakar and N'Djamena.

**LTXX/Turkey** We have received several reports that Overflight Permits, which were removed as a general requirement for non-scheduled flights in 2015, are being requested by Turkey for Business Aviation aircraft, specifically M- and VP- registrations. Reports welcomed to clarify to [bulletin@fsbureau.org](mailto:bulletin@fsbureau.org).

**RCTP/Taipei** Airport works on several parking positions may create availability issues from 04MAR-04APR especially for Airbridge gates. Check with handler.

**LFPB/Paris Le Bourget** Due WIP airport will be closed during 10 nights from 15FEB to 26FEB, every night from 2045 to 0500Z. No Medevac flights will be possible.

**EPKK/Krakow** Runway 07/25 is closed daily 2330-0430 until 03MAR.

**UXXX/Simferopol FIR** EASA published an updated SIB 2015/16 regarding the use of Simferopol FIR on 17FEB. The key change is the phased reintroduction of the use of Simferopol FIR for international transit traffic, on the basis of an evaluation of the high seas portion of the airspace (ie. outside the 12nm territorial limit of the Crimean Peninsula). This airspace provides routes UL851 and UM856 (Odesa South Sector), which since 17FEB are suggested by EASA for use by overflying traffic.

**YMML/Melbourne** will host the Formula 1 Grand Prix 17-20MAR, with additional traffic to both YMML and YMEN/Essendon during these dates.

**EHAM/Amsterdam** has changed the callsign of Schiphol Start-up to "Schiphol Planner".

**OYAA/Aden, Yemen** Airport closed and all flights cancelled since 21FEB due to security concerns.

**NVVV/Port Vila** On 17FEB local officials signed an agreement with a private contractor to begin repairing the runway. Several airlines suspended flights on 23JAN due to safety concerns with the airport's runway. Aviation officials stated that the renovations should begin in March.

---

## Midweek Briefing: Chinese Airport Delays, Eurocontrol NOP Changes

Cynthia Claros  
15 October, 2023



**Chinese Airport Delays** 03FEB ZXXX/China This is the busiest travel week of the year in China, with millions travelling for the Chinese New Year on 08FEB. Winter storms are forecast to impose delays across central Chinese airports; those currently affected include ZWWW/Urumqi Diwopu, ZSNJ/Nanjing Lukou, ZGGG/Guangzhou, and ZHHH/Wuhan Tianhe.

**Eurocontrol NOP Changes** 03FEB There are some significant changes to the daily Eurocontrol Briefings effective this week. Network News is no longer, and the D-1 daily conference is also gone. Instead, an Initial Network Plan is published each day at 1700Z on the **Network Operations Portal**.

---

**TTxx/Trinidad and Tobago** The annual Carnival in Port of Spain will take place on 08-09FEB . Travel and tourism activities are expected to continue for up to two weeks after the celebration and will be busiest during weekends. 10FEB (Ash Wednesday) is expected to be the busiest day of the year at the Port of Spain airport.

**EISN/Shannon FIR** Correction \*\* Due to a number of flights deviating from clearances prior to exiting Shanwick OCA, flight crews are reminded that Eastbound route clearances issued by Shannon Control for aircraft **exiting** Oceanic Airspace apply from AGORI, SUNOT, BILTO, PIKIL, ETARI, RESNO, VENER, DOGAL, NEBIN, MALOT, TOBOR, LIMRI, ADARA, DINIM, RODEL, SOMAX, KOGAD, BEDRA, OMOKO, TAMEL AND LASNO. Flights shall not turn **before** these points. In other words: wait until you enter (\*\* Thank you to Shannon ATC for pointing out the error in last weeks bulletin).

**North Atlantic** Effective 04FEB MNPS Airspace is replaced by HLA/High Level Airspace on the North Atlantic – extended with Bodø joining Shanwick, Gander, Reykjavik, New York, and Santa Maria. RNP4 or RNP10 now required. Read our **International Ops Notice 01/2016** or our blog post: **Did you know MNPS is over?**

**Eurocontrol NOP Changes** There are some significant changes to the daily Eurocontrol Briefings effective 01FEB. Network News is no longer, and the D-1 daily conference is also gone. Instead, an Initial Network Plan is published each day at 1700Z on the Network Operations Portal.

**FMMM/Madagascar** CAA have issued a reminder to inbound operators that a Passenger List must be sent 24 hrs prior to departure for Madagascar, by email to gdp@acm.mg.

**MKJK/Kingston FIR** Jamaica, has ongoing issues with radar coverage and serviceability, leading to ad-hoc flow management procedures including 15 minute en-route separation, and 10 minute arrival separation at international airports. Delays appear likely. Reports welcome to bulletin@fsbureau.org.

**FHAW/Ascension Island** is now operating at Rescue and Firefighting Category 8/RFF8.

**United Kingdom** Last week the UK Registered Traveller Service, which is the equivalent of the US Global Entry program, was expanded to include a few more countries: Hong Kong, Singapore, South Korea and Taiwan. Additionally, Bristol and Cardiff will be added to the list of participating airports.

**MUXX/Cuba** Flight crews of US based aircraft can now remain in Cuba with their aircraft when traveling to the island nation, instead of having to reposition immediately after offloading passengers. The change took effect on 27JAN, with new amendments to the Cuban Assets Control Regulations and Export Administration Regulations issued by the U.S. OFAC and BIS.

**NCRG/Rarotonga**, Cook Islands has new hours of ATC service: 2050 SUN-0400 MON, 1500 MON-1930 MON, 0530 WED-1400 WED, 2100 THU-1000 FRI, 2100 FRI-1000 SAT, 1400 SAT-1930 SAT, 0600 SUN-1130 SUN. These are UTC/Z Times, local is UTC-10. Raro is an important diversion airport in the South Pacific, especially for Easter Island and Tahiti. ATC is avail with 30 mins PN outside these hours (call +682 25890/71439).

**EHAM/Amsterdam** has raised the minimum vectoring altitude from 1200ft to 1600ft, which seems to spell an end to those super efficient 3 mile final approaches to 06. Still the best Terminal ATC in Europe.

**Europe** EASA has launched a 2 person cockpit survey to open discussion on the impact of their new recommended practice of always having 2 crew members in the cockpit.

**PKMJ/Majuro**, Marshall Islands – ExxonMobil will have no fuel during tanker replenishment, scheduled for 13-17FEB.

**ZXXX/China** This is the busiest travel week of the year in China, with millions travelling for the Chinese New Year on 08FEB. Winter storms are forecast to impose delays across central Chinese airports; those currently affected include ZWWW/Urumqi Diwopu Int'l, ZSNJ/Nanjing Lukou Int'l, ZGGG/Guangzhou, and ZHHH/Wuhan Tianhe.

**ENGM/Oslo** Oslo Airport has started supplying Air BP Biojet via its regular fuel hydrant system, naming

three large European airlines as launch customers. It is now is supplied from the main fuel farm, via common storage and distribution facilities, without the need for segregated infrastructure. Previously, it had to be provided by fuel truck.

**DNKK/Kano ACC** Nigeria, Area Radar Service is provided H24 from 04FEB.

[View the full International Bulletin 03FEB2016](#)