

Seletar launches new terminal

David Mumford

14 November, 2018

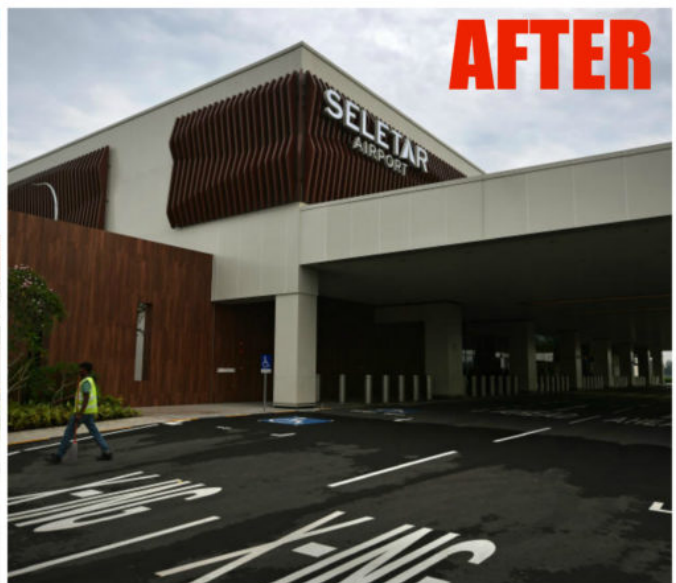


As WSSL/Seletar prepares to open its new \$80 million terminal on Nov 19, the authorities have announced that WSSL is now a “schedules facilitated” airport.

Don't panic – at least, not yet. This basically just means that because demand is now getting close to the airport's capacity, all airline and charter flights must confirm their schedules with the airport in advance – BA/GA flights don't need to do this.

It does not mean that the airport has become slot coordinated, although that might happen at some point in the future if congestion continues to be a problem.

As for the new terminal, it looks like it will be a decent improvement on the old one...



The new facility – six times bigger than the old terminal – will be split in two, with one large section for

airline flights, and another separate section dedicated for GA/BA.

Here's a video of what the new terminal looks like!

The idea is to free up capacity at WSSS/Singapore by **moving all scheduled turboprop flights to WSSL/Seletar** when the new terminal opens. At the moment, the only airline that falls into this category is Malaysia's Firefly – which currently operates 20 daily flights at WSSS – to and from WMSA/Subang, WMKI/Ipoh and WMKD/Kuantan.

Important to note – **all BA/GA traffic must switch to using the new terminal when it opens on Nov 19 at midnight local time**. Jet Aviation have provided **a handy printout** which tells you all you need to know about using the new terminal. Note that the new terminal is on the other side of the runway from the old terminal!

