

Scottish Airport Top Trumps

OPSGROUP Team
26 November, 2021



Thinking about heading to Scotland for some whisky, golf or a plate of haggis? Here's a little 'Top Trumps' guide to three of the airports you might be thinking of operating into.

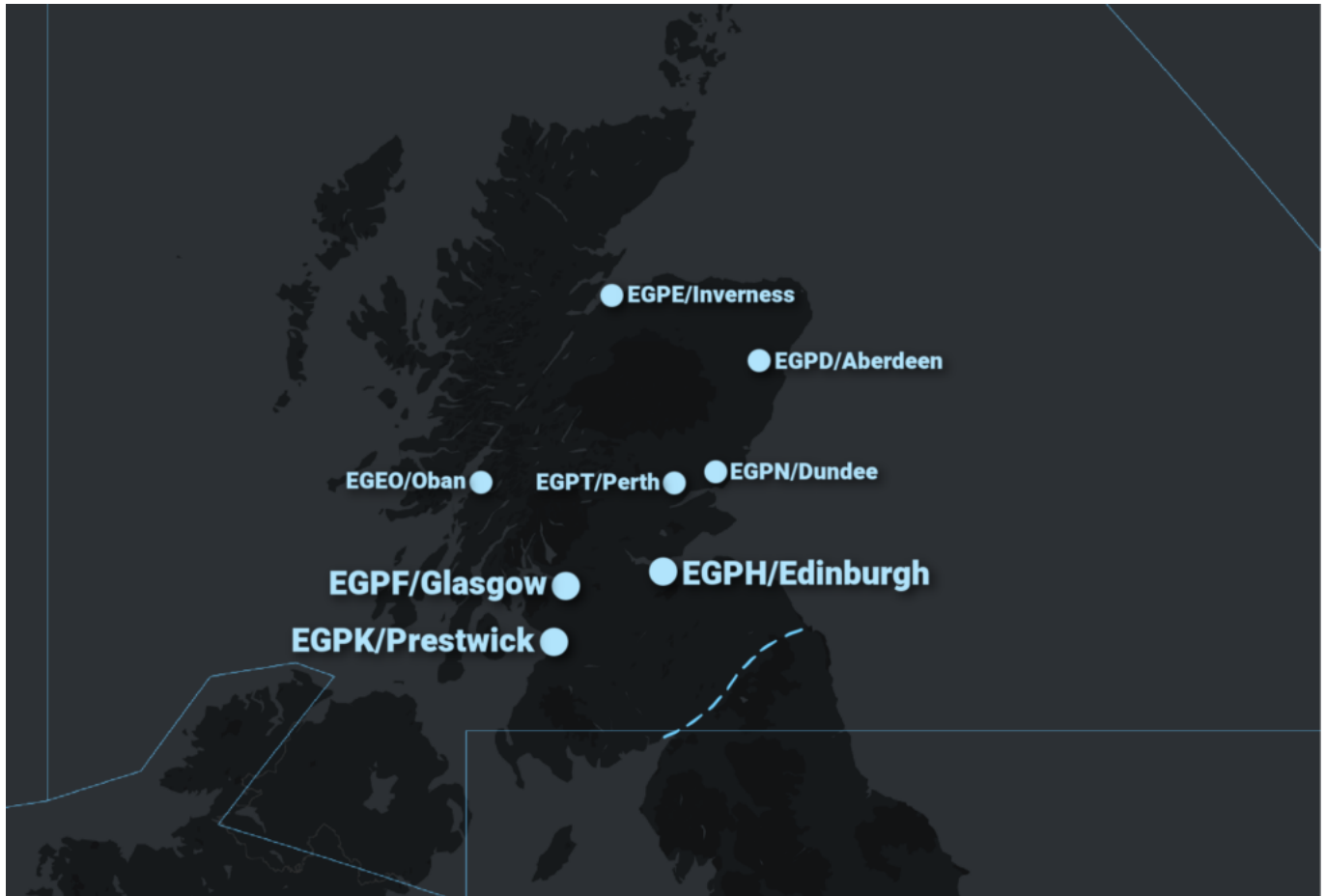
(If you want to visit Trump International golf course in Scotland then that'd be EGPD/Aberdeen you're after).

Scotland at a glance.

Scotland offers several international airport options. We already mentioned **EGPD/Aberdeen** which is northeast. Even further north you have **EGPE/Inverness** up in the Highlands. The HIAL (Highlands and Islands) Airport Group look after eleven airports up in the north region.

EGPN/Dundee and **EGPT/Perth** are your central easterly choices, with **EGEO/Oban** to the west (and a couple out in the islands).

Your top three which lie closer to the border with England however are **EGPF/Glasgow**, **EGPK/Glasgow Prestwick** and **EGPH/Edinburgh**. So we thought we'd take a look at those.



Who controls you?

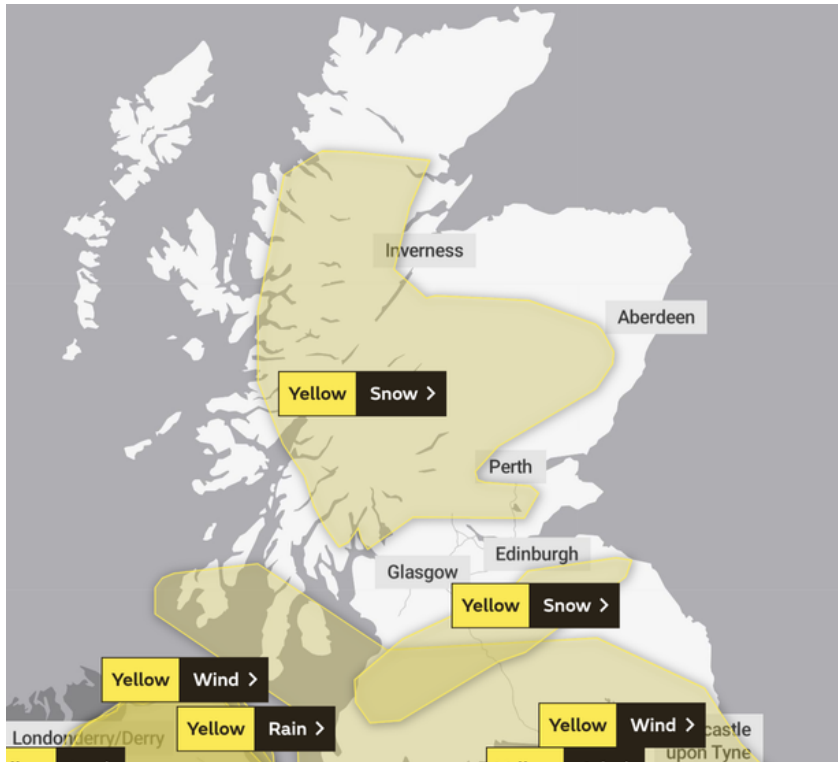
Scotland is part of the United Kingdom. Like the rest of the UK they use Great British Pounds (GBP), and aviation is **controlled by the UK CAA**.

NATS provide the ATC services through their Prestwick Centre. You'll probably find yourself speaking to Manchester Area Control (MACC) if you fly through England, before handing over to Scottish (ScACC) and potentially Oceanic (OACC) who control the eastern half of the NAT from 45 degrees north (Azores) to 61 degrees north (the boundary to Iceland).

You generally don't need permits to overfly and land, unless you are a commercial flight wanting to land. That said, some airports do have **slot requirements** and to head into the UK you do need to **fill out a General Aviation Report**, and ensure customs have a copy at least a day in advance. If you're a commercial operator, give it two days and if it's for a series of flights then five will keep you organised.

Head here for info on this, or email foreigncarrierpermits@caa.co.uk for help with permits

What's the weather looking like?



Warning about yellow snow are common across the UK in winter...

We've given this its own section because **the weather in Scotland can be challenging**. Along the southern region it is milder but you are still going to be faced with some serious snow and winter ops conditions from time to time.

Back in 2017, **major snow storms** resulted in the closure of Scottish airports, and many a day of disruption. It happened again in 2018, and in fact does pretty much every year. Fast forward to now (2021) and a town in Aberdeenshire just recorded **the coldest temperature seen in the UK in 26 years** (minus 23°C, or -9.4°F for our American continent friends).

So Scotland gets cold and snowy. This means you need to think about your cold weather ops, in particular:

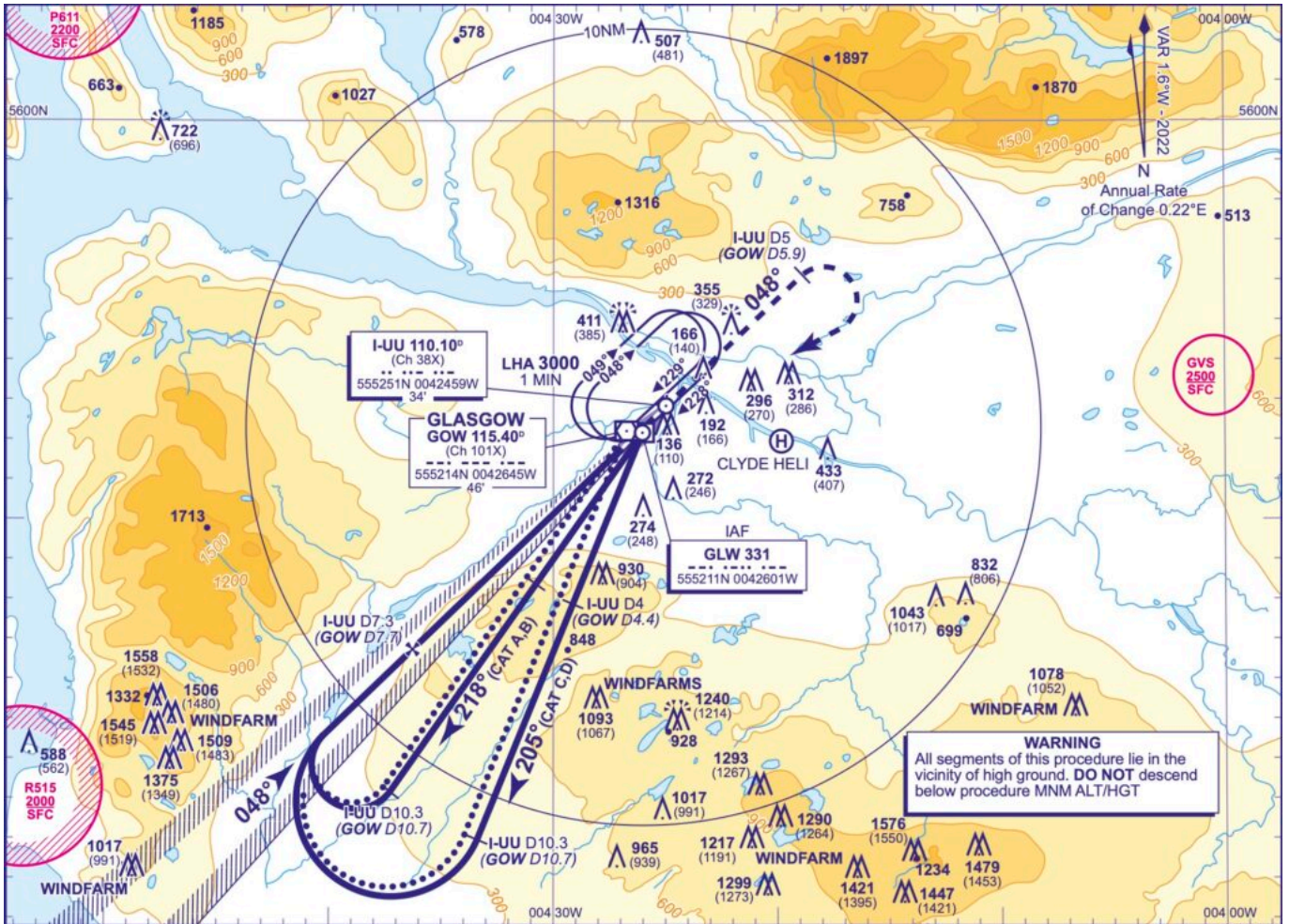
- Cold temperature altitude corrections
- De-icing/Anti-icing procedures
- Contaminated runway performance

Thinking of Glasgowing to the capital?

Then you probably want to fly to Edinburgh. Despite being the biggest city, Glasgow is not actually the capital of Scotland. It does however boast a nice airport for you to use.

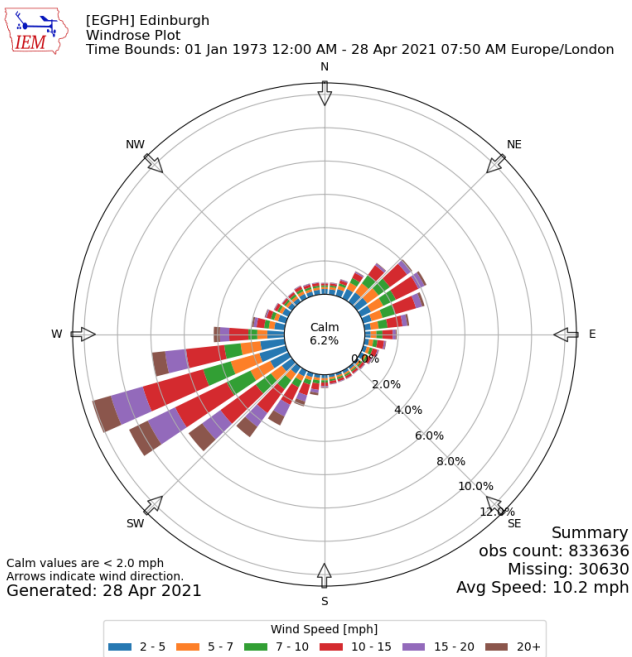
EGPF/Glasgow – the runway **05/23 is relatively short at just 8743 feet** (2665 meters) and you have a displaced threshold to think about as well. That said, the Airbus 380 can get in here so it isn't that small, and both directions offer **CAT III capability**.

Biggest threat: Some terrain and a busy missed approach because of it.



Many obstacles and a busy chart.

Edin-brrrrr



1973 - 2021 Wind Rose.

EGPH/Edinburgh also has a single **runway 06/24** which is shorter than Glasgow's at just **8386 feet (2556 meters)**. It also has **CAT III capability** in both directions.

Edinburgh gets windy. When there are strong south to south west winds wind shear is common and can be vicious.

The airport had a new GA ramp open up in 2019 so parking is less of an issue, but this is still a fairly busy airport so plan in advance.

Biggest Threat: The weather in winter and the wind shear from those South/Southwesters.

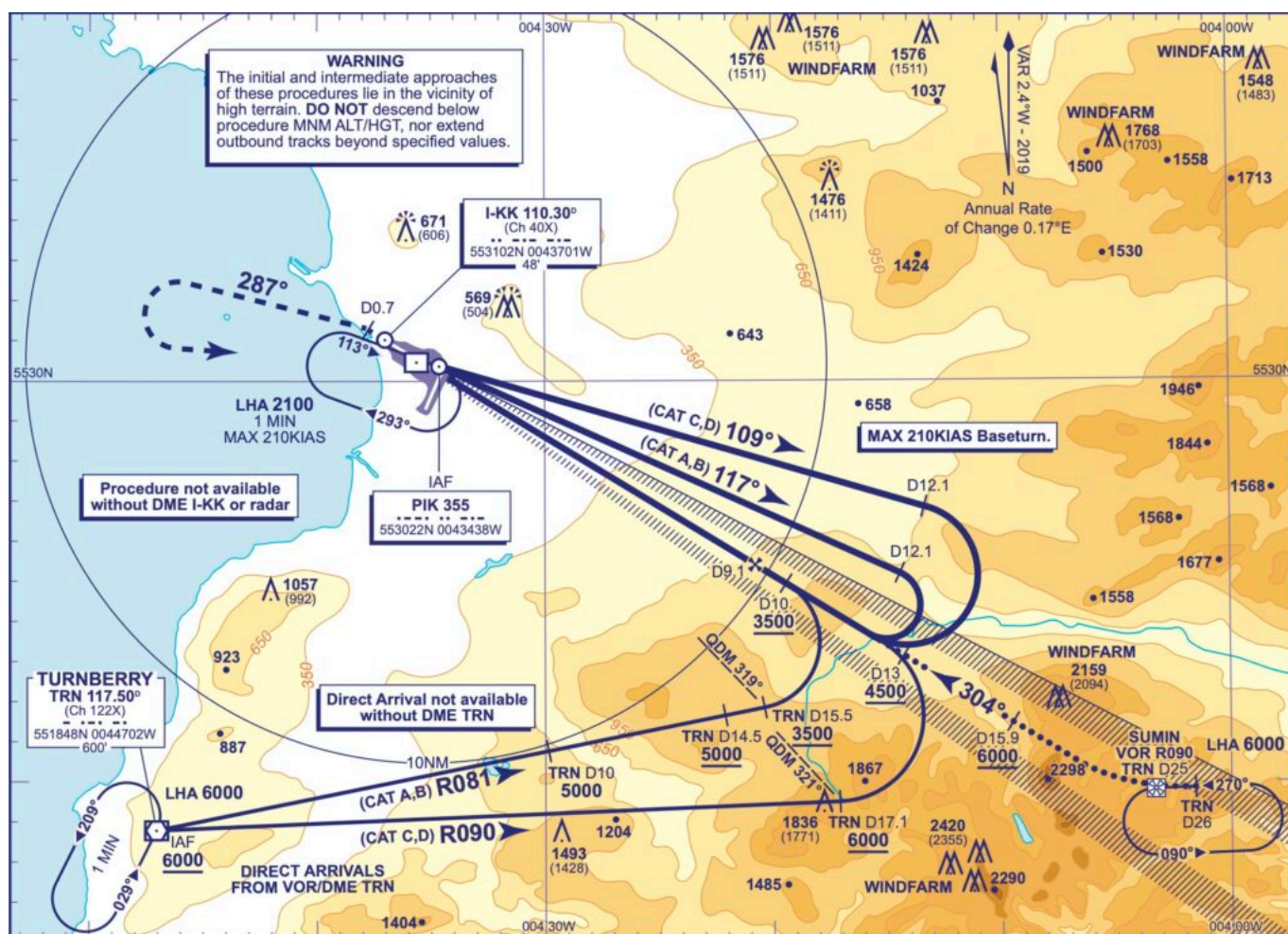
Prestwick

EGPK/Glasgow Prestwick (not to be confused with EGPV/Glasgow) is your third choice in this area. It offers the **longest runway option - 12/30 at 9800 feet (2987 meters)** but is **only ILS CAT I** capable.

The topography at Prestwick is the main threat - it can cause some significant wind shear and turbulence.




The airport is a popular **tech stop** for aircraft routing from the USA.

Biggest Threat: The terrain under the arrival/approach area for runway 30.



Terrain and a 3.5° path.

A Top Trump summary for you

EGPF/GLASGOW		EGPK/PRESTWICK		EGPH/EDINBURGH	
					
RUNWAY	05/23	RUNWAY	12/30 03/21	RUNWAY	06/24
LENGTH	8743 FT 2665 M	LENGTH	9800 FT 2987 M 6253 FT 1906 M	LENGTH	8386 FT 2556 M
APPROACH	ILS CAT III	APPROACH	ILS CAT I	APPROACH	ILS CAT III
RFF	9	RFF	7	RFF	9
THREAT	5/10 TERRAIN / BUSY MAPP	THREAT	7/10 TERRAIN / 3.5° GS	THREAT	6/10 COLD WX / WINTER OPS

Start your Scottish Airport Top Trumps set here!

Airport Lowdowns

We've made an Airport Lowdown for all three airports. If you are an OPSGROUP member then you can find them by clicking each of these thumbnails.

The Lowdown on: EGPF/GLASGOW		The Lowdown on: EGPB/EDINBURGH	
THE BASICS	HOURS: 12/24 RUNWAYS: 05/23 FACILITIES: MINOR MAINTENANCE / HANDLING / FUEL / CUSTOMS	HOURS: 12/24 RUNWAYS: 06/24 FACILITIES: MINOR MAINTENANCE / HANDLING / FUEL / CUSTOMS	HOURS: 12/24 RUNWAYS: 06/24 FACILITIES: MINOR MAINTENANCE / HANDLING / FUEL / CUSTOMS
THE BIG	SOME TERRAIN BUSY MAPP DISPLACED THRESHOLD WINDSHEAR	HAFF LOW LEVEL OFF ALTITUDE/TURN WINDSHEAR COMMON WHEN STRONG S/W WINDS CHALLENGING WINTER WEATHER CONDITIONS	HAFF LOW LEVEL OFF ALTITUDE/TURN WINDSHEAR COMMON WHEN STRONG S/W WINDS CHALLENGING WINTER WEATHER CONDITIONS
THE OPS	APPROACH WINDSHEAR AND TURBULENCE DUE LOCAL TOPOGRAPHY TERRAIN CAN RESULT IN EGWS WARNINGS. CONSIDER SPEED CONTROL	ARRIVAL: EXPECT TRACK SHORTENING, DESCENT PLANNING, ALTITUDES PUBLISHED AIRSPACE: RESTRICTED AREAS NEARBY, CLOSE TO BOUNDARY OF CONTROLLED AIRSPACE (MAY LEAVE RADAR CONTROL IF DETOURING DUE WEATHER) GRADIENTS: HIGHER THAN STANDARD	ARRIVAL: EXPECT TRACK SHORTENING, DESCENT PLANNING, ALTITUDES PUBLISHED AIRSPACE: RESTRICTED AREAS NEARBY, CLOSE TO BOUNDARY OF CONTROLLED AIRSPACE (MAY LEAVE RADAR CONTROL IF DETOURING DUE WEATHER) GRADIENTS: HIGHER THAN STANDARD
THE ALTERNATES	EGPK/PRESTWICK EGPH/EDINBURGH EGPVG/EDINBURGH	EGPK/PRESTWICK EGPF/GLASGOW EGPVG/EDINBURGH	EGPK/PRESTWICK EGPF/GLASGOW EGPVG/EDINBURGH
THE ENVIRONMENT	PRECIPITATION: RAIN, SNOW, WINTER CONDITIONS MFC: FOG/HAZE COMMON, GENERALLY CLOUDY WIND: OFTEN WESTERLY BUT VARIABLE, AVG 16-24 KTS TEMP: HIGHS OF 30°C / LOWS OF -10°C	PRECIPITATION: RAIN, SNOW, WINTER CONDITIONS MFC: FOG/HAZE COMMON, GENERALLY CLOUDY WIND: OFTEN WESTERLY BUT VARIABLE, AVG 16-24 KTS TEMP: HIGHS OF 10°C / LOWS OF 2°C	PRECIPITATION: RAIN, SNOW, WINTER CONDITIONS MFC: FOG/HAZE COMMON, GENERALLY CLOUDY WIND: OFTEN WESTERLY BUT VARIABLE, AVG 16-24 KTS TEMP: HIGHS OF 10°C / LOWS OF 2°C
THE CONTACTS	ATS: 125 575 AIRPORT (APT): +44 (0) 187 551 2000 / +44 (0) 187 555 5555 HANDLING: SIGNATURE +44 (0) 187 555 5555 / GDS@signatureflight.co.uk MENDOZ +44 (0) 187 555 5555 / GDS@signatureflight.co.uk GABA +44 (0) 1235 3101 / G@signatureflight.co.uk	ATS: 121 255 AIRPORT (APT): +44 (0) 344 333-1 (ADMIN) / +44 (0) 333 5205 HANDLING: SIGNATURE +44 (0) 127 7847 / gds@signatureflight.co.uk MENDOZ +44 (0) 344 3332 / gds@signatureflight.co.uk FLIGHTNEX +44 (0) 1279 888 5551 / gds@signatureflight.co.uk	ATS: 121 255 AIRPORT (APT): +44 (0) 344 333-1 (ADMIN) / +44 (0) 333 5205 HANDLING: SIGNATURE +44 (0) 127 7847 / gds@signatureflight.co.uk MENDOZ +44 (0) 344 3332 / gds@signatureflight.co.uk FLIGHTNEX +44 (0) 1279 888 5551 / gds@signatureflight.co.uk
THE OTHER	PCN: 05/R/0/FT NAET: PROCEDURES IN PLACE INCLUDING DEP, ARR SPEEDS AND CDA	PCN: 05/R/0/FT NAET: PROCEDURES IN PLACE INCLUDING DEP, ARR SPEEDS AND CDA WINTER: CONFIRM AVAILABILITY OF ANTI-AND-DE-ICING FLUID	PCN: 05/R/0/FT NAET: PROCEDURES IN PLACE INCLUDING DEP, ARR SPEEDS AND CDA WINTER: CONFIRM AVAILABILITY OF ANTI-AND-DE-ICING FLUID

The Lowdown on: EGPK/PRESTWICK <small>Prestwick SCOTLAND, U.K.</small>	
THE BASICS	HOURS: 12/24 TIMEZONE: UTC PERMITS/SLOTS: YES RUNWAYS: 12/30 1800FT / 23827 x 45M 6.5 CAT I 03/27 6253FT / 1905M x 45M 90P / 120 FACILITIES: MINOR MAINTENANCE / HANDLING / FUEL / CUSTOMS
THE BIG	LOW PLATFORM ALTITUDE TERRAIN: UNDER AIRAPP FOR RWY 30 3.5' 6/5 FEET FOR RWY 30
THE OPS	TERRAIN: CAUTION ON ARRIVAL, APPROACH AND HOLDING/PROCEDURAL APPROACH APPROACH: IF HIGH ABOVE GLEB, FULL SCALE FLYDOWN INDICATORS MAY NOT BE MAINTAINED DURING FALSE IMPRESSION OF DEVIATION AROUND
THE ALTERNATES	EGPH/GLASGOW 12/31 3747/2850m 6.5 CAT B EGPH/EDINBURGH 12/31 3386/2750m 6.5 CAT B EGPH/EDINBURGH 12/31 4001/1600m 6.5 CAT I (95) / 90P
THE ENVIRONMENT	PRECIPITATION: RAIN, SNOW, WINTER CONDITIONS WV: FOG/HAZE COMMON GENERALLY CLOUDY WIND: VERY VARIABLE, AVG 15-25 KTS TEMP: HIGHS OF 80C / LOWS OF 27C
THE CONTACTS	ATS: 12100 AIRPORT (OPS): +44 1292 58 1011 (MFI) +44 1292 58 1500 HANDLING: 12018 ops@prestwickairport.com AV SERVICES: +44 1292 58 2807 info@prestwickairport.com
THE OTHER	ICN: 9046/408 90P: CAT 7 AIRPORT: DO NOT CONFUSE EGPH/GLASGOW PRESTWICK WITH EGPH/GLASGOW



Airport Spy

Teterboro, USA

INTL KTEB

★ ★ ★ ★ ☆ Rated 3.5 from 3 reviews

Medium International Airport | Longest Rwy: 2,134 m / 7,000 ft (01/19) | Elev: 9

Top 10

Reviews **3** Alerts **45** Articles **23** [Docs & Data](#)



Docs for Teterboro

Airport Briefing: [KTEB Lowdown](#)

Airport Briefing: [Teterboro Flight Crew Handbook](#)

Docs for USA

Operating tips: [FAA Pacific Resource Guide Q4 2019](#)

These Airport Lowdowns are the briefings we've started to put together on specific airports – the useful, practical, operational stuff. The threats, risks and gotchas that you discover with experience.

There are a bunch more available for other airports via Airport Spy in your dashboard.

To download the PDF for each airport:

1. Head over to Airport Spy in your dashboard
2. Search for the airport you want
3. Click on the "Docs & Data" tab