

Monday Briefing: Your Attention Please, US Airport Disruptions

Cynthia Claros
18 January, 2016

**INTERNATIONAL
BULLETIN**

ISSUED BY FLIGHT SERVICE BUREAU

SITA HNLFSXH AKLFSXH AFTN KMCOXAAL

EMAIL INTL.DESK@FSBUREAU.ORG



Your Attention Please 18JAN As we reach 25,000 readers, **your help is requested.** We want to make sure we're delivering the best bulletin to you, so if you have a few moments, please **answer 3 questions.** You'll receive a gift token for use in the **Flight Service store.**

US Airport Disruptions 18JAN Airport workers plan disruptions in nine U.S. cities on MLK Day (Monday). Watch out for industrial action in Boston, New York City, Newark, Philadelphia, Miami, Chicago, Portland, and Seattle.

FJDG/Diego Garcia is closed from 15JAN to 19JAN.

WSSS/Singapore 2016 Airshow takes place 16-21FEB at Changi. Planning for parking, accommodation and when required permits should be arranged as early as possible.

LTBA/Istanbul is expecting a significant snow event on Monday. Commercial carriers have already preemptively canceled flights until the storm passes. Please check latest weather advisories and plan accordingly.

Kxxx/United States Airport workers plan disruptions in nine U.S. cities on MLK Day (Jan 18th). Watch out for industrial in Boston; New York City; Newark, N.J.; Philadelphia; Miami; Chicago; Portland, Oregon; and Seattle.

LSZH/Zurich Delays this week due to World Economic Forum in Davos.

KMCO/Orlando A two-phase runway construction project at is scheduled to begin 12JAN and continue into

April 2016. Runway 17R/35L will be closed during phase one, and Runway 18L/36R will close during phase two.

TBPB/Bardados is closed nightly from 0400-1000Z UTC due to work on the ATS building from Jan 13th to Jan 28th. Airspace is also downgraded to Class G to FL245 on the 13th, 14th, 20th, 21st, 27th and 28th. Please see NOTAM A0030/16 for full details.

URSS/Sochi reports of low fuel availability, check with Airport for latest, tankering recommended regardless.

NZxx/New Zealand The Aviation Security Officers Union advised on 14JAN of a possible strike. The union identified no date for the possible strike. Airport officials stated that if security officers strike, the air transportation will come to a standstill nationwide.

VIDP/New Delhi Airspace closed to commercial flights for more than an hour every day beginning next week in view of the Republic Day celebrations. 1035-1215 local, on 19-24JAN, and 26JAN.

West Africa The World Health Organization announced last week that the Ebola epidemic in West Africa is officially over. For the first time since the outbreak began in December 2013, all three of the hardest-hit West African nations — Liberia, Guinea and Sierra Leone — have had zero reported cases of Ebola for 42 days in a row, a period equal to two full incubation cycles of the virus.

VHHH/Hong Kong According to reports on 13JAN, thieves targeted a South African national aboard South African Airways flight 286 from Johannesburg to Hong Kong on 21 December. The victim stated that a fellow passenger alerted him that other passengers had taken his baggage while he was sleeping and rummaged through it in the aircraft lavatory. When the victim subsequently inspected his baggage, he found that the lock had been broken and foreign currency worth approximately \$1200, as well as items of jewelry, were missing. Hong Kong police officers searched several suspects when the aircraft landed, but the stolen items were not found. This type of crime is reportedly a significant problem on international flights bound for Asian destinations, particularly Hong Kong. According to statistics released by Hong Kong authorities in August 2015, a total of 45 in-flight robberies had been reported up to that point in 2015; 48 cases occurred in 2014. Cash, jewelry and smartphones are especially targeted.

Lxxx/Turkey Foreign nationals filing certain visa applications at a consular post must now upload their application documents online through the Turkish electronic visa application system prior to appearing at a consular post. Applicants must still submit their visa application forms and supporting documents in person at a Turkish consular post. This system does not impact electronic visas for those nationals eligible for E-visas, but does impact business visitors who must acquire a consular visa.

Int Ops Bulletin As we reach 25,000 readers, your help is requested. We want to make sure we're delivering the best bulletin to you, so if you have a few moments, please answer 3 questions. You'll receive a gift token for use in the Flight Service store.

[View the full International Bulletin 18JAN2016](#)

Monday Briefing: Saudi Arabia, Bahrain ban

flights from Iran, New US Visa Waiver Restrictions

Cynthia Claros
18 January, 2016

INTERNATIONAL BULLETIN	ISSUED BY FLIGHT SERVICE BUREAU
	SITA HNLFSXH AKLFSXH AFTN KMCOXAAL
	EMAIL INTL.DESK@FSBUREAU.ORG



Saudi Arabia and Bahrain ban flights from Iran 11JAN Bahraini and Saudi Civil aviation have banned flights between Bahrain, Saudi Arabia and Iran. The Bahraini Civil Aviation Authority (BCAA) stated that it will work to resolve any disruptions as a result of the ban. Bahrain previously cut diplomatic relations with Iran, following the attack on the Saudi Embassy in Tehran.

New US Visa Waiver Restrictions 11JAN Several changes to the rules for the US Visa Waiver program are now in effect, restricting the moment of travelers having visited Iran, Iraq, Sudan, or Syria in the last 5 years. Read more ...

NFFN/Fiji A report released by the Disaster Management Office on 4 January 2016 stated that Cyclone Ula caused minor damage to Fiji. While the storm blew away iron roofs in Ono-i-Lau and Kabara islands, it did not cause significant structural damage or loss of life.

SBxx/Brazil Tourists from Australia, Canada, Japan and the United States will be eligible to travel to Brazil for the upcoming Olympics without a visa for up to 90 days for visits between 01JUN and 18SEP16, though no extensions will be available. Proof of Olympic attendance is not required for this visa waiver. Business travelers from these countries will still require business visas during this time. Eligible travelers should be sure to confirm the validity of their travel documents prior to their trips. After 18SEP, tourists from these countries will require tourist visas for entry.

LFL/Lyon Due to industrial strike affecting fuel providers at LFL (Lyon Airport). Aircraft Operators have been asked to tanker in enough fuel for a round trip. LFL Airport can also not be used as alternate until 12JAN.

Cxxx/Canada Nav Canada has issued AIC 3/16 advising of a pending change to the credit that may be taken at alternate aerodromes for lateral navigation/vertical navigation (LNAV/VNAV) minima, when the aircraft is certified for barometric LNAV/VNAV.

KPHX/Phoenix Possible arrival and departure delays are expected on 12JAN due to extra passenger volume the day after the Alabama and Clemson football game. The airport expects an extra 30,000 departing passengers that day, boosting the total number of passengers to 150,000. In addition to regularly scheduled flights, at least 14 charter flights will depart.

Kxxx/Southern California SpaceX has scheduled a launch for Jan. 17. This launch will take off from Vandenberg Air Force Base in California. Please check local NOTAMs with KZLA (SOCAL) and KZOA (Oakland Oceanic) for any airspace closures.

Zxxx/China Chinese officials stated that they will allow departing flights to transit via Taiwan. Aviation officials will allow flights departing from Chongqing, Nanchang and Kunming to transit through Taipei's Taoyuan International Airport (RCTP/TPE).

Fxxx/Madagascar On 7 January 2016, Malagasy health officials reported statistics in an ongoing outbreak of the bubonic plague. Reports indicate that 63 fatalities and a total of 174 cases have been recorded since August 2015. Madagascar first alerted the World Health Organization (WHO) to this outbreak in September. A previous outbreak in 2014, which lasted until early 2015, resulted in 335 cases and 79 fatalities.

Dxxx/Nigeria The Nigerian Civil Aviation Authority (NCAA) has lifted the suspension it recently imposed on Acorn Petroleum Limited from supplying aviation fuel to domestic and foreign airlines at airports in the country. NCAA had suspended Acorn and four other oil marketing companies from supplying aviation fuel to local and foreign airlines operating in the country.

Vxxx/India The Indian government has approved a Memorandum of Understanding on Civil Aviation between India and Singapore.

View the full International Operations Bulletin 11JAN2016

Shanwick/Gander: New NAT procedure - Confirm Assigned Route

Cynthia Claros
18 January, 2016



Coming soon to an FMS near you will be a new standard message from Oceanic ATC: “**Confirm Assigned Route**”.

If you’ve operated on the ‘half-tracks’ in the NAT recently, you’ll have seen this. So, what’s it all about?

Short and simple: with the half-tracks, the potential for Nav Errors are now (quite a lot, perhaps) higher than before. Waypoints are that bit more complicated, and 5030N 30W is a little too similar to 50N 30W.

So, to prevent you reading back the clearance correctly and then screwing up the route in the FMS, Shanwick (and Gander from 01DEC16) will ask you via datalink “**What are you planning to fly?**” once you enter the Ocean.

All you have to do is ack the message, scroll through your route and check it looks OK, and send it back down to them. If it’s the same as your clearance, then that’s that. If not, or you don’t reply, you’ll get an additional telegram from Shanwick.

Each aircraft has a different FMS of course, so the good people at NATS have issued **AIC 071/16** to help you – it covers the A320-340, 350/380, and 75./76, 77. If you fly a business jet, one of those should be pretty similar to yours. And if you’re operating something a little older, keep the radio operators in Ballygirreen and Gander happy with a full position report.



Reference: Iceland AIC 12/16.

January 2016 US Visa Waiver Changes

Declan Selleck
18 January, 2016



When do these changes come in to effect?

The “four countries” restriction is effective 20DEC2015; the passport requirement 01APR2016.

Who is prohibited from traveling under the Visa Waiver Program by the new law? Are there any exceptions or waivers from the restrictions?

The new VWP travel restrictions apply to:

- Nationals of VWP countries who, since **01MAR2011**, have traveled to **Iran, Iraq, Sudan, Syria** or any other country of concern designated by the Department of Homeland Security; and
- Dual nationals of a VWP country and Iran, Iraq, Sudan, Syria or any other country of concern designated by the Department of Homeland Security.

If you have traveled to a country of concern since March 1, 2011, you are prohibited from traveling under the VWP.

If you are a dual national of a VWP country **and** Iran, Iraq, Sudan, Syria or any other country or area deemed to be of concern by the Secretary of Homeland Security, you are prohibited from traveling under the VWP. There is no exception to this prohibition.

If you are barred from the VWP travel and do not qualify for an exception or a waiver, you must obtain a B-1/B-2 visa at a U.S. consulate before traveling to the United States for business or tourism.

What are the new passport requirements for travel under the Visa Waiver Program? How do they differ from previous VWP requirements?

Starting **01APR2016**, all VWP travelers (including infants and children) must present an e-Passport – i.e., a

travel document that is machine-readable and contains an electronic chip – when traveling to the United States.

Most VWP travelers have been required to present an e-Passport when entering the United States for some time. However, some nationals of longtime VWP member countries whose passports were issued before October 26, 2006, have been able to travel to the United States on the VWP even if they do not have an e-Passport.

After March 31, 2016, all VWP travelers must present an e-Passport. E-Passports contain an integrated computer chip that stores the passport holder's biographic data, a biometric identifier, a digital signature and a unique chip identification number. The data on the chip includes two lines of machine-readable data as well as facial recognition details. The chip can also be scanned to match the identity of the traveler to the passport.

These passport requirements apply only to travelers under the Visa Waiver Program. Foreign nationals who have a U.S. visitor visa or another type of U.S. nonimmigrant visa stamped in their passport are not required to comply with these revised passport requirements.

What is the Visa Waiver Program and who is eligible to participate?

The Visa Waiver Program permits eligible citizens of designated countries to travel to the United States for up to 90 days for business or pleasure without first having to obtain a visitor visa at a U.S. consulate. In order to use the VWP, travelers must obtain Electronic System for Travel Authorization (ESTA) clearance.

Citizens of the following 38 countries are eligible to participate in the VWP: Andorra, Australia, Austria, Belgium, Brunei, Chile, the Czech Republic, Denmark, Estonia, Finland, France, Germany, Greece, Hungary, Iceland, Ireland, Italy, Japan, Latvia, Liechtenstein, Lithuania, Luxembourg, Malta, Monaco, Netherlands, New Zealand, Norway, Portugal, San Marino, Singapore, Slovakia, Slovenia, South Korea, Spain, Sweden, Switzerland, Taiwan, and the United Kingdom.

Thank you!

Mark Zee
18 January, 2016



Thank you — all received! Thank you very much for taking the time to send us your story on Dorian. If you requested it, we'll send you a copy of the report once complete, and tell you about the new Response Team.

Before you go ...

You probably know someone else involved in Dorian Relief – we're especially keen to hear from pilots and other flight ops folks involved. Would you send them the link to this, so we get their story too?

Survey link: <https://ops.group/respond/dorian>

If you like, copy and paste this into an email to a friend that was involved:

New email

Hi,

I just completed some questions on Hurricane Dorian around the aviation relief efforts, and they are looking for more responses. You might like to help out ...

Here's the link:

<https://ops.group/respond/dorian>

Kind regards,

We're grateful for your help and input. If you have any questions, or need help – just email the OPSGROUP team.

Monday Briefing: Cyclone Ula strengthens towards Fiji, TSA Waiver program changes

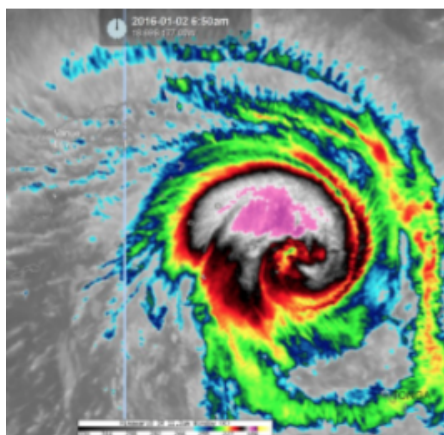
Cynthia Claros
18 January, 2016

**INTERNATIONAL
BULLETIN**

ISSUED BY FLIGHT SERVICE BUREAU

SITA HNLFSXH AKLFSXH AFTN KMCOXAAL

EMAIL INTL.DESK@FSBUREAU.ORG



Cyclone Ula maintains strength towards Fiji The first tropical cyclone for 2016 is lashing Fiji's outlying islands, after causing destruction in parts of Tonga. Category three Cyclone Ula is bringing 150-kilometre-an-hour winds, strong gusts and heavy rain to the Lau group, in Fiji's eastern division. Fiji Met Service has the latest information.

TSA Waiver program changes 04JAN The requirement for foreign operators to obtain a TSA Waiver for domestic flights within the US has been dropped, but only for aircraft under 45 tons. See new Notams FDC 5/6289, 5/5782, and 5/5806.

OAKB/Kabul. Afghanistan At approximately 1100 local time (0630 UTC) on 04JAN an explosion was reported near Hamid Karzai International Airport (OAKB/KBL). According to police sources, the blast occurred when a suicide bomber in a vehicle detonated explosives at a police checkpoint near the airport. With the exception of the assailant, the bombing did not result in injuries or fatalities, and there was no indication that airport operations were affected.

South Pacific / Tropical Storm Ula located approximately 230 nm south-southeast of Suva, Fiji. The current intensity is assessed at 85 knots based on Dvorak intensity estimates ranging from 77-102 knots. The system is expected to slow significantly under a weak steering influence, before shifting northwest as the ridge to the south begins to build.

UIBB/Bratsk A common Polar ETOPS alternate has issued a notice that non-scheduled aircraft must have prior permission due to fuel supply issues.

UIII/Irkutsk A common Polar ETOPS alternate. The main and only runway 12/30 is closed due to repair from 05JAN until 26JAN. Please see NOTAM A5600/15 for further details.

UDD/Moscow Arrival of An-124 and B747 aircraft only by prior coordination with the Airport Company until March.

VHHK/Hong Kong International Airport opened a new \$10 billion concourse this week. The Midfield Concourse's 19 gates and 20 aircraft parking stands will allow the airport to handle an additional 10 million passengers per year and will serve approximately 20% of passenger flights once it begins operating at full capacity in March, Hong Kong International said. The five-story, 1.1 million-square-foot concourse sits between the airport's two existing runways and connects to Terminal 1 via an automatic people mover.

NFFF/Nadi FIR Until Jan 21/2016. Operators of RNAV equipped aircraft intending to operate within the NADI FIR shall plan using random routes only if the aircraft are equipped with RNP10 or better and must have HF. Non-RNP aircraft will be permitted to operate but will be required to flight plan vis published fixes air routes. Please see NOTAM A1521/15.

HSSS/Khartoum, Sudan has no Jet A1 available for Ad-hoc operations between 27DEC and 05JAN. Carry return fuel or choose another tech stop.

View the full International Operations Bulletin 04Jan2016

KVNY/Van Nuys: Vandals tag 3 different business jets

Cynthia Claros
18 January, 2016



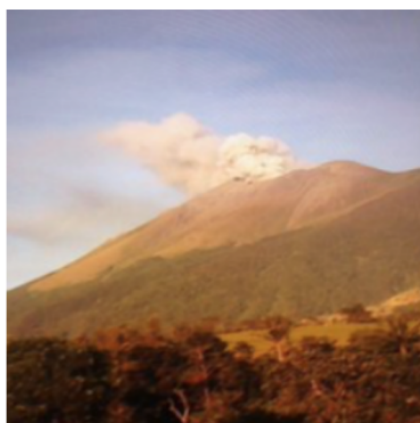
27DEC Three business Jet aircraft were sprayed with graffiti on Sunday night (27DEC) at KVNY/Van Nuys Airport, in Los Angeles. The aircraft belong to locally based Charter companies, according to law enforcement and aviation sources. Two years ago, a \$2.3-million Learjet suffered \$100,000 in damage after being spray-painted with graffiti in a secure area of the same airport. The LAPD said at the time that

the crime was gang-related but no one was arrested.

Monday Briefing: Kanlaon Volcano Eruption, Colombia Permit requirements

Declan Selleck
18 January, 2016

INTERNATIONAL BULLETIN	ISSUED BY FLIGHT SERVICE BUREAU
	SITA HNLFSXH AKLFSXH AFTN KMCOXAAL EMAIL INTL.DESK@FSBUREAU.ORG



Kanlaon Volcano Eruption 28DEC The Kanlaon Volcano in the Philippines erupted on 27DEC, with an initial ASHTAM issued up to FL260. Extreme caution advised for airways B472, B473, and W7. You can get the latest updates through the Tokyo VAAC.

Updated Colombia Permit requirements 22DEC For Non-Commercial aircraft, ie. Ferry flights, General Aviation – authorisation is required only if stopping in Colombia longer than 48 hours, or operating to more than 1 Colombian Airport. **Updated list of document requirements** in AIP Supp 22/15 issued 22DEC.

New Years closures. Check opening times carefully during the next week, as many major airports and FBO's have closures, especially on 31DEC/01JAN.

Kxxx/USA Scattered thunderstorms, some of which will be strong to severe, will move east across Kentucky, Tennessee, eastern Mississippi, Alabama, western Georgia and the Florida Panhandle. Heavy rain will once again trigger flash flooding over portions of the South. Airports in the risk area include KATL/Atlanta, KBNA/Nashville, KMEM/Memphis, KCHA/Chattanooga, KBHM/Birmingham, KMOB/Mobile and KLEX/Lexington.

FYWH/Windhoek, Namibia has new opening hours from 23DEC, 0700-2000LT Daily.

HSSS/Khartoum, Sudan has no Jet A1 available to Ad-hoc operations between 27DEC and 05JAN. Carry

return fuel or choose another tech stop.

MUFH/Havana FIR, Cuba Airspace restrictions in place 23DEC-31DEC due to staff shortages, airways UB760 and UL210 are northbound only, and between 1400-0100Z daily, all aircraft will be spaced 25nm apart through the Havana FIR, regardless of altitude.

OAKB/Kabul, Afghanistan a car bomb detonated near Kabul International Airport at approximately 0800 local time (0330 UTC) today. Taliban militants took responsibility for the attack.

UIBB/Bratsk continues to have fuel supply issues, fuel limitation extended to 12JAN

LSZH/Zurich has parking issues for Private flights, the Airport Company will generally only accept 6 hours ground time. Extended stays will require a reposition to another airport, limitation until 06JAN.

Space Weather/Polar Ops 55% risk of R1-R2 Minor to Moderate Radio Blackout risk predicted through Dec 30th. For the most up to date information please see the NOAA Space Weather Dashboard for Aviation.

LTFJ/Istanbul A Kurdish militant group has claimed responsibility for an attack at Istanbul's second airport that killed 1 person, and threatened more assaults.

FAA/North Atlantic Aircraft operators crossing the North Atlantic have been required to include the aircraft registration and six-character hexadecimal code that is the aircraft's address in Item 18 of their ICAO flight plans. However, an FAA review of flight plans filed during a one week period revealed that many operators were not meeting this requirement. Therefore, the agency has issued Information for Operators (InFO) 15015, which emphasizes the importance of providing the required information in the proper format.

Vxxx/India Signaling a major shift in granting air traffic rights, the government is looking at restricting the number of landing points for overseas airlines irrespective of their seat entitlements. A senior Civil Aviation Ministry official said it was looking at restricting the ports of call given to foreign airlines under bilateral rights, while remaining flexible on seat entitlements.

VAJB/Jabalpur The Aviation regulator DGCA has suspended the license of Jabalpur airport following an incident early this month, in which a herd of wild boars marched onto the runway during the taxiing of a commercial aircraft. Following suspension of its license, no flight operations can take place from Jabalpur airport, sources said adding that the AAI has been told to remove deficiencies including proper fencing of the operational area.

RKxx/South Korea South Korea's Ministry of Health and Welfare has formally declared an end to the Middle East Respiratory Syndrome (MERS) health threat on December 23. According to the Ministry of Health and Welfare, its decision follows World Health Organization. MERS was first confirmed in South Korea on 20MAY, and the last fatality from MERS-related complications in the country occurred on 25NOV.

Monday Briefing: Cuba Travel opens up, Chile Airport strike ends

Declan Selleck
18 January, 2016

INTERNATIONAL BULLETIN

ISSUED BY FLIGHT SERVICE BUREAU

SITA HNLFSXH AKLFSXH AFTN KMCOXAAL
EMAIL INTL.DESK@FSBUREAU.ORG



Cuba Travel opening up 21DEC Negotiations between the USA and Cuba on scheduled air services between the two countries are progressing at pace; meaning that we expect to see sanctions on private US Tourism Travel lifted as early as next March. See more below.

Chile Airport Strike ends 21DEC A four day strike was ended yesterday 20DEC in Chile by the Trade Union, as 3000 Airport workers across the country responded to the governments rejection of a pension plan. Several hundred flights were cancelled. Non-scheduled operations were largely unaffected, but the risk of further action remains.

HUEC/Entebbe ACC, Uganda. ATC in Uganda is reporting a significant increase in the number of flights entering their airspace without prior coordination from Sudan and Congo (Khartoum and Kinshasa FIRs). Regional ATC in Africa is known to be challenging, but this warning deserves attention. Crews should make all efforts to contact each FIR 10 mins in advance – HF 11300, or relay on 126.9 if unable.

KZMA/Miami FIR SpaceX announced Sunday it has pushed back its planned launch of a Falcon 9 rocket with 11 communications satellites to 2033 ET Monday. KZMA has issued NOTAM A1357/15 for launch. It will also affect the KZJX Jacksonville FIR and TJZS San Juan FIR. The FAA will also issue tactical advisories regarding the launch and will most likely restrict operation on AR6 and AR15.

EGGX/Shanwick have issued a reminder to flights operating on the “Tango Routes” (T9, T16, T213) that HF in all cases is required to operate here, and crews should be trained in the procedures. Request OCA Clearance 50 mins in advance. Primary/Secondary HF freqs: Southbound 6547/8879, Northbound 8879/6547.

LIPH/Treviso Fuel spillage on the runway has closed the airport until 1700Z today 21DEC.

Cuba and USA Reports in the international media last week indicated that an agreement between Cuba and the US is likely to be signed early next year, allowing up to 110 scheduled flights: 20 to Havana, 10 to each of the other 9 international airports in Cuba. At present, US visitors must still fall in to one of the 12 official categories for authorised travel; however, once scheduled services are in place, we anticipate this to be the leverage to remove the final hurdle for US citizens – visiting Cuba for tourism. The first flights will

likely operate in early March.

It should be noted that there are no restrictions on the Cuban side. US Aircraft can land in Havana with a routine **Landing Permit issued by IACC**, and US Aircraft can overfly with a routine **Overflight permit**. We anticipate that the requirement for a permit will stay in place as this is routine in most Latin American countries, primarily to check Navigation Fee debts and Operator Profile.

Georgia and Ukraine On 18DEC2015, the EC announced that both Georgia and Ukraine meet requirements for being granted visa-free travel to the European Union's Schengen zone. However, the European Parliament and the EU member states must vote in favor of granting Georgia and Ukraine visa-free travel before they are able to do so. Reports indicated that the decision could be put to a vote as early as 2016.

Haiti On 19DEC, election-related demonstrations across Haiti turned violent amid accusations of electoral fraud. Violent clashes led to the burning of several government buildings. Haitian police officers stated that they were trying to restore security to the country.

Space Weather/Polar Ops moderate an ongoing G1 geomagnetic storm expected for Mon, Dec 21. Please check the NOAA Space weather aviation dashboard for the latest actuals and predictions [HERE](#).

PAZA/Anchorage ARTCC has a number of new procedures and systems in place effective 17DEC, including 30/30 RNP4 separation, an update to the Track Advisory program for westbound Russian Tracks, and standard routings. Check the current PAZA NOTAMs for complete information.

ZBAA/Beijing authorities have issued a red alert for high levels of air pollution and reduced visibility. The alert will be effective until 22DEC. According to China's National Meteorological Center, air pollution levels are forecast to be slightly higher than those recorded from 06-09DEC.

EGLL/EGKK London Heathrow/Gatwick Airport train links will be disrupted over Christmas. The Gatwick Express trains will stop running for 10 days due to engineering works, with the last service of 2015 leaving Victoria station at 9.15pm on Christmas Eve and the first services of 2016 scheduled for 4 January. At Heathrow, the usual one-day closure on Christmas Day will be extended by three days. Neither Heathrow Express nor Heathrow Connect trains will run from London Paddington station during the period.

UBxx/Azerbaijan will become part of the IFPS (Integrated Flight Plan System) zone as of AIRAC 1601 on 07JAN2016. Azerbaijan will delegate responsibility for the provision of flight planning services for IFR/GAT flights within the Baku FIR to the Network Manager's Integrated Initial Flight Plan Processing System. For more info see Azerbaijan AIC 01/2016 Series A, AIP ENR 1.10, AIP ENR 1.11 and NOTAM A0126/15.

UHPP/Petropavlovsk FIR Volcano Karmisky has recently been active with ash reported up to 15,000 ft and possibly affecting ops on R220. Please check for the latest Tokyo VAAC advisories.

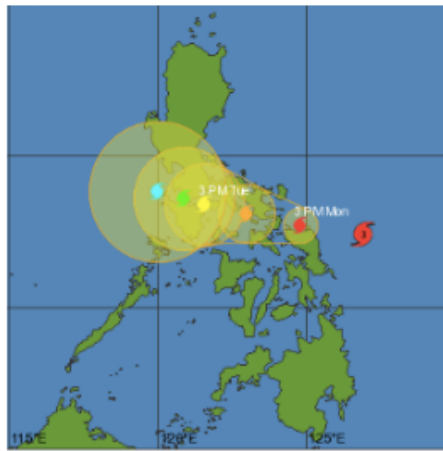
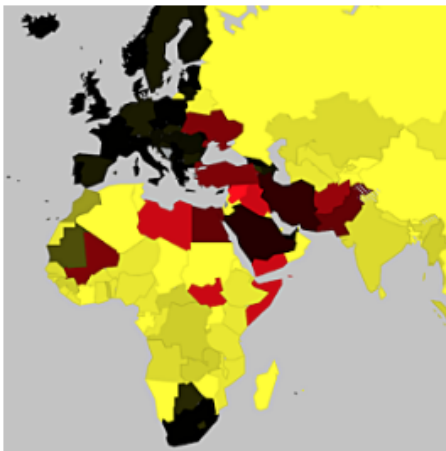
The ICAO Council adopted a new tracking standard for certain international flights that requires crews to report their aircraft's positions at least every 15 minutes. It will become effective in March 2016 and applicable 08NOV2018. The new requirement also will be formalized as Amendment 39 to Annex 6—Operation of Aircraft, Part I. Only aircraft with a maximum takeoff weight of more than 59,000 pounds and a passenger seating capacity of more than 19 are affected by the rule. Also, the requirement applies to over oceanic and other remote areas, and where air traffic service is obtaining position information greater than 15-minute intervals.

Christmas and New Years closures. Check opening times carefully during the next 2 weeks, as many major airports and FBO's have closures, especially on 24, 25, 26DEC and 31DEC/01JAN.

Monday Briefing: New Overflight Map, Typhoon Melor affecting the Philippines

Cynthia Claros
18 January, 2016

INTERNATIONAL BULLETIN	ISSUED BY FLIGHT SERVICE BUREAU
	SITA HNLFSXH AKLFSXH AFTN KMCOXAAL EMAIL INTL.DESK@FSBUREAU.ORG



New Overflight Map 14DEC The Airline Cooperative and Flight Service Bureau have finalised the initial version of an online Overflight Permit and Security Map, showing current airspace and security warnings worldwide, together with county by county information on permit requirements. The map is available at all AO's at fsbureau.org/map. Read more below.

Typhoon Melor affecting the Philippines 14DEC the center of Typhoon Melor is forecast to move into the central Philippines (near southeastern Luzon) Monday evening local time as the equivalent of a Category 4 hurricane. The current forecast path indicates the Typhoon moving inland towards Legazpi City, Sorsogon City and Gubat are some of the locations. For more details visit the **Joint Typhoon Warning Center (JTWC)**.

EGGX/Shanwick/CZQX/Gander The technical issues affecting the implementation of the RLAT/Reduced Lateral Separation tracks have reportedly been finally resolved and the first publication of the "Half Tracks" is now scheduled for **today**, 14DEC2015.

LFRR/Brest FIR Most sectors regulated day and night due to new software (ERATO) implementation. High delays. The worst delays are in the following sectors: LFRMZSI, LFRJ, LFRN, LFRVKWS. German departures to USA are advised to consider routing North of Brest airspace via NIK (or North of).

OAKN/Kandahar A Taliban attack took place at the airport on 08DEC, with close to 50 fatalities. The attack was a major security breach, as heavily armed militants were able to enter a fortified area supposed to have been made secure by the Afghan National Security Forces (ANSF).

The ICAO Council adopted a new tracking standard for certain international flights that requires crews to report their aircraft's positions at least every 15 minutes. It will become effective in March 2016 and applicable 08NOV2018. The new requirement also will be formalized as Amendment 39 to Annex 6—Operation of Aircraft, Part I. Only aircraft with a maximum takeoff weight of more than 59,000 pounds and a passenger seating capacity of more than 19 are affected by the rule. Also, the requirement applies to over oceanic and other remote areas, and where air traffic service is obtaining position information greater than 15-minute intervals.

Central/South America On 10DEC2015, the U.S. Centers for Disease Control and Prevention (CDC) issued a Level 1 Travel Warning for Mexico, El Salvador, Guatemala, Panama, Brazil, Columbia, Paraguay, Suriname and Venezuela, advising travelers to protect themselves against the Zika Virus. Zika is a viral disease transmitted by the Aedes aegypti mosquito, which also carries the dengue and chikungunya viruses.

KSAN/MMTJ San Diego/Tijuana A new pedestrian bridge spanning the U.S.- Mexico border now connects KSAN/San Diego and MMTJ Tijuana. The airport terminal, called Cross Border Xpress, opened last Wednesday and will improve travel for fliers going from Tijuana to the United States.

Kxxx/United States The U.S. House of Representatives voted in support of a measure to tighten control on the Visa Waiver Program, which allows travelers of certain nationalities to enter the U.S. without a visa. Under the new measure, the U.S. will now require visas for anyone who has traveled to Iraq or Syria in the past five years. The measure requires that all countries participating in the visa waiver program share intelligence with the U.S. regarding possible extremists.

FVFA/Victoria Falls Intl A new international passenger terminal opened at Victoria Falls International Airport (FVFA/VFA) on 02DEC.

Zxxx/China Chinese officials lifted a red alert they had put in place on 7 December after heavy smog greatly reduced visibility throughout the city and increased health risks for anyone venturing outdoors. The smog was so heavy it affected operations at nearby airports. Heavy smog is an annual occurrence in northeast China, and the problem is most severe during the winter months, when the morning fog becomes dense and power plants run at a higher rate to produce electricity for in-home heating. Because of this, you should expect similar alerts to be issued periodically throughout the remainder of the winter.

Yxxx/Australia FIR & Oceanic Changes. REF: AIC H24/14. ADS-B, GNSS and Mode S Transponder Equipment Mandates. Aircraft must be equipped with the mandatory avionics by certain dates. First Implementation date is 04FEB2016.

Cxxx/Canada Nav Canada has issued AIC 30/15 which addresses a proposal for amendment to the International Civil Aviation Organization (ICAO) Global Operational Data Link Document (GOLD) to optimize high frequency (HF) radiotelephony use in the North Atlantic (NAT) Region. The change eliminates NAT Region specific RT phraseology that has been made redundant with the availability of flight data to radio operators.

HCMM/Mogadishu Aden Adden, Somalia On the evening of 13DEC2015, African Union (AU) peacekeepers thwarted a suspected al-Shabaab attack on the Airport. The assailants, who were on speedboats, reportedly attempted to stage a seaborne attack on the facility. Heavy gunfire was reported throughout the encounter. Aden Adde International Airport has not been operational during nighttime hours since 1991. Currently, the airport and its compound host foreign embassies and delegates.

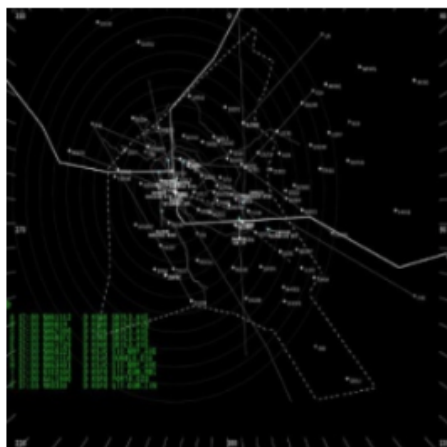
VOMM/Chennai Airport has resumed full operations after recovering from major flooding last week.

Monday Briefing: Northern California airspace changes, Iraq closes airspace below FL300

Cynthia Claros
18 January, 2016

**INTERNATIONAL
BULLETIN**

ISSUED BY FLIGHT SERVICE BUREAU
SITA HNLFSXH AKLFSXH AFTN KMCOXAAL
EMAIL INTL.DESK@FSBUREAU.ORG



Northern California ‘Metroplex’ airspace changes 07DEC On 10DEC, several revised and new SIDs and STARs associated with the Northern California Metroplex project will be published. These procedures will be the last major changes associated with the project. You can find the full document covering the changes [here](#).

Iraq closes airspace in Kurdish North below FL300 06DEC Iraq issued a new Notam on 06DEC warning of further Cruise Missile operations below FL310. ORBB A0423/15 states that “Flights operating at FL310 or above, and flights operating at ORBI, ORNI and ORMM are not affected”. You can read the full Notam [here](#).

OIIX/Tehran FIR German Authorities published a new Notam last week warning of a risk to flight for aircraft operating in the vicinity of OITT/Tabriz, OITL/Ardabil, and OIGG/Rasht. DFS, the German ATC agency, recommends overflying this general region at FL260 or higher. A6875/15.

Russia/Turkey Effective **01DEC**, Direct non-scheduled flights between Russia and Turkey are banned by decree of the President of the Russian Federation dated 28NOV. Prohibited for all airlines, regardless of the

country of aircraft's registration .

VOMM/Chennai Re-opened for 24-hour domestic and international flight operations today, five days after it was shut due to flooding.

EGGX/Shanwick As of 07DEC, although system testing and acceptance is reportedly finished, no RLAT/Reduced Lateral Separation tracks have yet been published by Shanwick or Gander for the daily OTS. It appears uncertain what the first day of operation will be.

MUHA/Havana, Cuba Hotel Capacity in Havana is under severe strain at present. With increased traffic to Cuba, finding a hotel room is now a regular challenge. Some airline crews have had to be accommodated in Varadero instead, as there were no hotel rooms left in the city. Book well in advance, where possible.

OMxx/United Arab Emirates It has been advised to us, that the requirement for TCAS 7.1 also applies to the Emirates FIR. All aircraft arrivals/departures or those transiting UAE airspace from 01DEC must be 7.1 compliant, or a re-route around UAE airspace will be required. Another option is to obtain a special dispensation to operate, this is available from GCAA in AUH, but is reportedly difficult to obtain. For more details please see the UAE AIP 'Gen 1.5.6.6 Carriage of ACAS-II'.

Llxx/Italy There is a possible suspension of IFR non scheduled commercial traffic to/from LIRF and LIRA on Dec 8th. Please see NOTAM LIXX 1W2845/15 for the official restriction.

Llxx/Italy Ongoing volcanic emission from Mt. Etna may disrupt routings through Italian Airspace. Please check the Toulouse VAAC for the most up to date info.

ESxx/Sweden have been forced to suspend, with immediate effect, flights from northern Iraq to Sweden following a directive from the Swedish Transport Agency (Transportstyrelsen). In a statement issued last week, Transportstyrelsen said the increased military activity across northern Iraq posed a threat to civilian flights thus warranting a ban.

VTxx/Thailand The FAA has downgraded Thailand to a Category 2 after an audit of the country's Department of Civil Aviation (DCA) in October showed continued non-compliance with International Civil Aviation Organization (ICAO) safety standards. The FAA's move comes five months after the ICAO formally instituted a Serious Safety Concern (SSC) against Thailand for failure to adequately address shortcomings identified during a Universal Safety Oversight Audit Programme (USOAP) inspection in January.

MUxx/CUBA Will be reinstating travel permits for doctors. On 01DEC, Cuba announced that it was reinstating the travel restrictions it had previously imposed on doctors, which requires doctors to obtain permission before leaving the country. The restriction had been lifted in 2013, but is now being re-imposed, as the government claims that its universal and free health care services are being "seriously affected" by the number of doctors leaving the country.

Zxxx/China will mandate that its air traffic controllers use only English when communicating with pilots of any airline starting in 2017, according to the Civil Aviation Administration of China (CAAC). The move will improve situational awareness for foreign pilots. Currently, ATC at all airports across China use English to communicate with pilots of foreign airlines and Mandarin with those flying for Chinese carriers. The CAAC will announce the exact date for implementation later, ensuring the readiness of all stakeholders involved in the process.

ZUUU/Chengdu has completed the on going construction work. The parking bay has been released and is available on a first come, first serve basis. This applies to overnighting aircraft as well.

Monday Briefing: Russian overflights of Ukraine now prohibited, EUR: TCAS 7.1 Compulsary

Cynthia Claros
18 January, 2016

INTERNATIONAL BULLETIN	ISSUED BY FLIGHT SERVICE BUREAU
	SITA HNLFSXH AKLFSXH AFTN KMCOXAAL EMAIL INTL.DESK@FSBUREAU.ORG



All Russian overflights of Ukraine now prohibited 29NOV In a development of the dispute between Russia and Ukraine regarding traffic between the two countries, Ukraine has extended the original ban (which affected specific Russian Airline only) to all Russian registered Aircraft Operators. Notam 2604/15 issued last Wednesday has the specifics.

EUR: TCAS 7.1 Compulsary 01DEC The EASA Mandate for compulsory carriage of TCAS version 7.1 (with changes to "Adjust Vertical Speed" RA and resolution of "Reversal RA" problems) is 01DEC. All operators must have 7.1 on board. Note that this applies also to EU Territories abroad, eg. New Caledonia, Tahiti.

OYSC/Sanaa FIR We've received input from a number of US Airlines that although Yemeni landmass airspace is prohibited, operations through the OYSC/Sanaa FIR Oceanic portion are available in accordance with FDC5/5575.

NZAA/Auckland is closed every Monday morning 0130-0430LT for runway maintenance. However, Robin Leach at Air Centre One notes that several aircraft have departed for Auckland with an arrival time during this period resulting in airborne holding. Part of the issue is that a NOTAM is only issued if the work is cancelled; otherwise the (hard to spot) AIP/IFG notes for Auckland apply.

ZBAA/Beijing Chinese Authorities have issued an 'orange level' alert for smog on Sunday, with reports that visibility in places is down to a few hundred feet. This alert requires industrial plants to reduce or shut down production. With the current temperatures, Freezing Fog is affecting operations at Beijing Airports.

North Atlantic First day with the new NAT Tracks structure will be 01DEC per advice from NATS and Nav Canada, reporting that previous IT issues with the new tracks have been resolved.

Spain The National AFTN COM Centre is out of action for a few hours on Monday night (after 2100Z), meaning that FPL filing and other AFTN based messaging will be affected for Airports in Spain and the Canary Islands.

Bermuda Transatlantic Operators should note in addition to the new track structure on 01DEC, that Bermuda will be without radar coverage for the afternoon (1200Z-1600Z), and the National Authority there is recommending to avoid Bermuda airspace. A limited non-radar service will be provided, and only airways L459, 461, and 462 are useable if you do overfly. Refer to KZWY A0461/15 for more.

EINN/Shannon is again closed for maintenance this Monday night 01DEC, 2145Z-0500Z; use alternate diversion alternates!

EGLL/London Heathrow has a high risk of regulation for Mon, Nov 30th from 0540-2200Z due to strong winds. Please plan fuel accordingly for possible airborne delays.

HLLL/Libya FIR Due to the recent escalation of the Libyan Crisis all Italian aircraft operators have been prohibited from flying through HLLL FIR. Prior Permission to operate into HL available aerodromes also requires Prior Permission by the Libyan CAA. REF NOTAM A8382/15 which replaced A5637/15.

LFRR/Brest FIR Training and stepped implementation of the ERATO paperless strip system in Brest FIR commenced on 24NOV and will last until 18DEC with significant capacity reductions. A transition period with capacity reductions will follow from 19DEC; this may potentially extend into Summer 2016. Moderate and (in some case) high delays may be expected daily, depending on the sector configuration provided.

LTxx/Turkey In response to the downing of a Russian Fighter Jet, Russia will be suspending the Visa-Free Travel program between the countries effective 01JAN2016.

VICG/Changigarh The new Chandigarh international airport which was originally scheduled to close for runway resurfacing which was estimated to take approx a year will in fact now remain open during the construction. Work to resurface the runway will take place without disturbing the flight operations there.

EIDW/Dublin The DAA and IAA are currently exploring a further reduction in SID separation to 75 seconds (following aircraft given take-off clearance when preceding aircraft reaches 1NM past DER). Ongoing AIM is to reduce further to 60 seconds if possible.

MKJS/Montego Bay The operator of Sangster International Airport, MJB Airports Limited, Announced that, effective 24NOV, electronic boarding passes will be accepted as part of the security screening process.

DNxx/Nigeria The Nigerian Civil Aviation Authority, NCAA, suspended some oil marketers from supplying Jet A1 to airlines due to a lack of depot facilities. The affected marketing companies include Jushad Oil and Gas Limited, Lubcon Limited, Ascon Oil Company Limited, Acon Petroleum Limited and Star Orient Aviation Limited.

FQNC/Nacala,Mozambique Mozambique's airport management company AdM stated on 24 November 2015 that Nacala Airport is expected to receive the proper certification to service international flights by December 2015. International airlines can begin using the facility by March or April 2016. Nacala Airport was a former military airbase and it opened as a civilian facility in December 2014. However, to date, the airport has only been permitted to service domestic flights.

Monday Briefing: Thanksgiving ATC Traffic Plan, New Missiles Warning - Baghdad FIR

Cynthia Claros
18 January, 2016

INTERNATIONAL BULLETIN	ISSUED BY FLIGHT SERVICE BUREAU
	SITA HNLFSXH AKLFSXH AFTN KMCOXAAL EMAIL INTL.DESK@FSBUREAU.ORG



Thanksgiving ATC Traffic Plan 23NOV The FAA have published details of Traffic Management plans for the east coast of the US during the Thanksgiving holidays, effective 24NOV to 30NOV. The highest volume days will be 25NOV and 29NOV, expect delays on north/south routes to Florida during this period. Read the full details of the airspace initiatives [here](#).

New Missiles Warning - Baghdad FIR 23NOV A NOTAM issued today by the Iraqi CAA indicated anticipated cruise missile traffic across the FIR from the Caspian Sea, leading also to the closure of Erbil Airport until Wednesday. See below for further.

EGGX/CZQX Shanwick/Gander The new NAT Track Structure and Reduced Lateral Separation Minima procedures, initially planned for 12NOV, are now re-planned for Monday 30NOV, following the resolution of computer issues related to the new format.

UIII/Irkustk will close the main runway on 01, 08, 15 and 22DEC from 1210-1450Z for repairs, not available as alternate during these times. As this is a common Polar alternate, check NOTAMS for current information.

UEEE/Yakutsk will close 31DEC-02JAN, not available for movements or as alternate after 0500Z on 31DEC.

EINN/Shannon has a runway closure on 23NOV from 2345Z-0500Z, not available as alternate. Caution before using as NAT alternate on this date. If another ETOPS alternate is required, consider EIDW/Dublin, EGAA/Belfast or EGPF/Glasgow.

ORBB/Baghdad FIR Iraq published the following NOTAM (A0413/15) effective today 23NOV CRUISE MISSILES CROSSING NORTHERN PART OF IRAQ, FROM CASPIAN SEA TO SYRIA, NORTH OF REP OTALO, NO CRUISE MISSILE OPS IN THE REST OF ORBB FIR, FLIGHTS OPERATING AT FL310 OR ABOVE AND FLIGHTS OPERATING AT ORBI, ORNI AND ORMM NOT AFFECTED. SFC - 30000FT MSL, 23NOV 0500Z - 25NOV 0500Z. In addition Erbil and Sulamaini airports will be closed until Wednesday.

OLBA/Beirut FIR Initially issued a NOTAM on 20NOV, closing a large part of the FIR including routes G2/UG2, R219/UR219, L620/UL620, in response to Russia's request for a training exercise in their airspace. Subsequently the government reversed their decision, and the NOTAM was cancelled on 22NOV, reference A0293/15.

BKPR/Kosovo Airspace to the north of Kosovo was released from UN/KFOR restriction, to Serbian control, on 20NOV, meaning that arrivals and departures from Europe will no longer have to make a circuitous approach and can depart to the north. Procedures are not yet in place, but technically the airspace is no longer restricted. For most operators this will see a route saving of up to 100nm.

GABS/Bamako, Mali. With great sadness we must report that 6 crew members of Volga-Dnepr Airlines were amongst those killed in the attack on the Radisson Hotel in Bamako on Friday.

KXXX/USA Thanksgiving Holidays 26NOV and 27NOV leading to increased traffic flows across US, but anticipated reduced traffic across the NAT region.

KXXX/USA Runway Closures DTW-RWY 4L/22R CLOSED SEA-RWY 16C/34C CLOSED LAS-RWY 7L/25R CLOSED LAX-RWY 6R/24L CLOSED 23/1430

FJDG/Diego Garcia Parking Stands A6-11 and B4-8, as well as some taxiways, closed for repair effected 19NOV.

NWWW/Noumea continues with runway closures 23-26NOV affecting the main runway.

FABL/Bloemfontein, South Africa will not accept widebody diversions 19-26NOV.

GCCC/Canarias FIR will have a HF outage today 23NOV from 0900-1500Z. In case of non-contact, use CPDLC, or HF via Santa Maria or Sal for relay.

LIXX/Italy ATC Strike planned for 24NOV 1200-1600Z has been postponed, refer NOTAM A8227/2015.

HLLL/Tripoli FIR Additional new southbound route available via RASNO UY751 LOSUL, for those operators using the airspace.

LFEE/Rheims ATC Strike 23NOV/0500Z - 28NOV/0500Z Confirmed for Monday only at this time - NOTAM F2093/15 refers. AOs are advised to reroute, avoiding LFEE area of responsibility. Those that are not able to reroute may expect delay.

RJJJ/Japan FIR will have a comms outage affecting Flight Plan filing on 25NOV, from 1410-1720Z. To avoid delays and missing plans, Flight Plans should be filed earlier than normal to RJJJZQZX for overflights and landings. Refer to J7545/15 for specifics.

SPJC/Lima, Peru Effective 12NOV the Location Indicator for the main airport in Lima, Jorge Chavez,

changes from SPIM to SPJC.

TTZP/Piarco ATC has issued a request for operators to include KNYCZZZX when filing plans entering New York Oceanic airspace from the Piarco FIR, or operating east of 58W within the Piarco FIR, in order that New York has details of the aircraft.

With regard to business aviation, but equally interesting for airlines and private operators, the NBAA has published a useful list of the Top10 Issues for International Operators in 2016.

View the full International Operations Bulletin for 23NOV2015

Monday Briefing: NAT Tracks Change Postponed, KLAS/Las Vegas restrictions

Cynthia Claros
18 January, 2016

INTERNATIONAL BULLETIN	ISSUED BY FLIGHT SERVICE BUREAU
	SITA HNLFSXH AKLFSXH AFTN KMCOXAAL EMAIL INTL.DESK@FSBUREAU.ORG



NAT Tracks Change Postponed 16NOV The planned implementation of reduced separation in the Organised Track System (OTS) has been postponed. During final testing, a software issued was identified by ATC, and as a result the previous track structure remains unchanged. New waypoints introduced on 12NOV are useable. A revised implementation date is expected to be announced today, 16NOV.

KLAS/Las Vegas restrictions 17NOV Increased traffic from Monday 16NOV due NBAA Conference. Special Procedures in effect from 14NOV-23NOV affecting KLAS, KHND, and KVG, refer to this NBAA link for details. If you are visiting the NBAA Conference, you can meet the Flight Service Bureau team at stand C12050 in the Central Hall, and collect your free show pack.

KAUS/Austin A technical problem with ATC equipment in the Austin Tracon will likely lead to delays today; service is being provided by Houston Centre instead, with a Ground Delay Program planned to manage capacity.

KLAS/Las Vegas Increased traffic from Monday 16NOV due NBAA Conference. Special Procedures in effect from 14NOV-23NOV affecting KLAS, KHND, and KVG. Refer to <https://www.nbaa.org/events/bace/2015/air-traffic/>. If you are visiting the NBAA Conference, you can meet the Flight Service Bureau team at stand C12050 in the Central Hall, and collect your show pack (you can reserve one [here](#)).

KXXX/USA Several incidents reported of laser beams pointed at aircraft, on 13NOV Southwest and American were targeted at KPHX/Phoenix, and on 11NOV three aircraft at KDAL/Dallas Love were illuminated.

KXXX/USA Runway Closures BWI-RWY 10/28 CLOSED SEA-RWY 16C/34C CLOSED LAS-RWY 7L/25R CLOSED

KXXX/USA Snowbird 2015: The FAA have published details of Traffic Management plans for the east coast of the US during the Thanksgiving holidays, effective 24NOV to 30NOV. The highest volume days will be 25NOV and 29NOV, expect delays on north/south routes to Florida during this period. Read the full details of the airspace initiatives [here](#).

EINN/Shannon Has an overnight runway closure. from 17NOV-20NOV 2300-0500Z for essential maintenance. If another ETOPS alternate is required on these nights consider EIDW/Dublin, EGAA/Belfast or EGPF/Glasgow.

LFFF/France A Notam issued Friday (A4850/15) regarding Border Controls remains in place, in practice the Notam is a reminder to airlines of existing requirements only. Expect delays due security checks at all French Airports, and many closures of public buildings and transport systems in France.

VLVT/Vientiane, Laos has reopened after a runway closure on 13NOV due to a disabled aircraft. An MA60 had aquaplaned and partially blocked the runway.

MNXX/Nicaragua closed its border with Costa Rica on Sunday 15NOV in response to the wave of Cuban migrants moving northward to the United States. Costa Rican officials had previously issued transit visas to approximately 1,200 detained Cuban refugees at the Panamanian border. One Cuban migrant stated that there were approximately 2,000 Cubans waiting on the Costa Rican side of the Nicaraguan border.

NFFN/Nadi, Fiji Refurbished departure lounge opens today 16NOV; the government will spend another 105 million USD to upgrade the Airport further in the coming year.

PAZA/Anchorage FIR Two new waypoints have been added for Polar operations. Those waypoints are LETUN and BAREK.

LFxx/France ATC Industrial action planned for 17NOV has been cancelled.

Llxx/Italy FIR There has been a call for an Italian National Strike, including ENAV ATC personnel, on 24NOV 1200-1600 UTC. More information will be posted as soon as it is available.

PLCH/Christmas Island As per NOTAM A1581/15 Jet A-1 fuel limited in supply. Sched flights to minimize fuel uplift on arrival or maximize tankering into PLCH. Tech stops cannot be made. In effect until 04DEC.

PKMJ/Marshall Island Construction is planned at the eastern end of RWY25; authorities have notified

expected delays of up to 30mins including airborne holding.

FMEE/Reunion Airport will be closed from 16NOV-28NOV on Mon, Weds, Fri for surface work. Airfield cannot be used as an alternate except in case of emergency. All traffic services will be provided normally for all aircraft crossing La Reunion TMA. Refer to NOTAM A1452/15.

FAA The FAA is rolling out Controller Pilot Data Link Communications-Departure Clearance (CPDLC-DCL). Currently, only George Bush Intercontinental Airport in Houston, TX (IAH), William P. Hobby Airport in Houston, TX (HOU) and Salt Lake City International Airport in Utah (SLC) are operational, however, the FAA plans to bring 56 airports online by the end of 2016. KTEB/Teterboro is scheduled to be operational by the end of MAR2016.

View the full International Operations Bulletin for 16NOV2015

Monday Briefing: North Atlantic OTS Changes, Indonesia Volcano Eruption

Declan Selleck
18 January, 2016

INTERNATIONAL BULLETIN	ISSUED BY FLIGHT SERVICE BUREAU
	SITA HNLFSXH AKLFSXH AFTN KMCOXAAL EMAIL INTL.DESK@FSBUREAU.ORG



North Atlantic OTS Changes this week 09NOV This Wednesday (12NOV) sees the implementation of the new NAT Track OTS, marking the first change to the lateral structure since the tracks were introduced in 1965. New requirements include RNP4, and 24 new Oceanic Entry Points come into effect. See below for further.

Indonesia Volcano Eruption 09NOV Operations into WADD/ Denpasar, Bali continue to be disrupted due to ongoing eruption of Mt. Rinjani on Lombok Island. Also affected are nearby WARB/Blimbingsari and WADL/Lombok.

EINN/Shannon FIR CPDLC service is withdrawn on the evening prior to implementation of the new NAT Track system, voice service only from 1715Z onwards on 11NOV.

LGGG/Athens FIR Strike of Greek Radio Operators (thereby including AFTN messaging, and AFIS) announced this morning for 12NOV. Overflights will not be affected. Full details here.

HESH/Sharm el-Sheikh remains open but subject to multiple advice notices from international Authorities. Many airlines have cancelled operations into the airport after increasing suspicions that a bomb was loaded here onto the A320 which crashed into the Sinai Desert.

HLLL/Tripoli FIR Libya has issued updated advice regarding airport availability – HLLQ, HLTQ and HLZW are only available for international arrivals, daylight hours only. PPR and Permit is required prior operations.

SCFZ/Antofagasta ACC, Chile. Crews on Airways UL780 and UL302 are requested to inform ATC of any speed changes greater than .02 Mach; if unable on VHF, use HF 10024. The procedure is to ensure separation between succeeding aircraft operating on CI speeds.

SBXX/Brazil The Brazilian Grand Prix takes place 13-15NOV making Sao Paulo operations at SBSP/Congonhas, SBGR/Guarulhos, and SBKP/Campinas busier than usual.

RPLL/Manila, Philippines APEC 2015 Summit being held 17-20NOV. Check restrictions, many commercial flights have been suspended during this period. Parking at a premium. Consider quieter alternates such as RPLC/Clark.

YXXX/Australia Australian Border Force strike commencing midnight 09NOV across Australian airports. As a result, departure and arrival processing at Australian airports may take longer than usual.

WADD/Denpasar, Indonesia Operations here continue to be disrupted due to ongoing eruption of Mt. Rinjani. Also affected are nearby WARB/Blimbingsari and WADL/Lombok. For updates monitor http://www.bom.gov.au/products/Volc_ash_recent.shtml

LIXX/Italy Possible ATC strike on 14NOV 1200-1600Z announced.

KXXX/US Airport Runway closures: BWI-RWY 10/28 CLOSED SEA-RWY 16C/34C CLOSED LAS-RWY 7L/25R CLOSED

KLAS/Las Vegas NBAA 2015 will take place 17-19NOV limiting airport capacity.

HECC/Cairo FIR, Egypt Point PASOS (LCCC FIR) is again available in both directions for flight planning. Please be aware flights departing OLBA via LCCC must file via VELOX-PASOS. Also see HECC NOTAM 1A277/15 and 1A278/15 for flight planning guidance.

VHHH/Hong Kong Arrival and Departure delays up to 30 minutes can be expected due to a flight check and maintenance on RWY 07L/25R on 09NOV 0530-0100 and 10NOV 2300-0100.

Caribbean Tropical Weather Advisory Shower and thunderstorm activity is showing signs of organization in association with a low pressure system located just north of the Turks and Caicos and the southeastern Bahamas. A tropical depression or a tropical storm is likely to form on Monday while the low moves west-northwestward to northwestward near or over the central and northwestern Bahamas. For further details see National Hurricane Center

KLAX/Los Angeles Due to military operations of the coast of LAX there is a risk of arrival delays and reroutes during the overnight periods until Nov 12th.

MWCR/Grand Cayman may be forced to shorten the runway at Owen Roberts International Airport (MCWR/GCM). The runway, which was extended to accommodate long-haul flights, may have to be shortened in order to accommodate a 400 ft/124 m safety area. An extension of the runway cannot be further extended, and the airport authority is examining all options.

CYYQ/Churchill has amended opening hours 1200-2200Z M-F.

PKWA/Bucholz has revised ATC hours from 01NOV, 0800-1230 and 1330-1600LT.

NWWW/Tontouta has a main runway closure 09-12NOV at various times, some daytime. Check NOTAM 1543/15.

EGPF/Glasgow is closed overnight 22NOV-11DEC for runway and taxiway repairs.

DRRR/Niamey Ouagadougou ACC is now operational H24 again; the previously implemented contingency plan for traffic operating outside ATC service hours is withdrawn.

View the full International Operations Bulletin for 09NOV2015.

Monday Briefing: Sinai Airspace avoided, Low Vis creates day of chaos

Declan Selleck
18 January, 2016

INTERNATIONAL BULLETIN	ISSUED BY FLIGHT SERVICE BUREAU
	SITA HNLFSXH AKLFSXH AFTN KMCOXAAL EMAIL INTL.DESK@FSBUREAU.ORG



02NOV2015 HECC/Cairo has requested that traffic through PASOS point on the boundary with LCCC/Nicosia FIR be rerouted, effectively closing airway UL550 and the Sinai peninsula. Shown on radar image above, most traffic is avoiding the area that an A321 crashed in on Saturday. No definite link is being made but Authorities and Operators are naturally cautious.

02NOV2015 Conditions perfect for fog across the UK and western Europe are causing widespread delays

this morning. Unusually, almost all airports from EGCC/Manchester to EDDF/Frankfurt are affected by the same conditions, with many airports down to 100 metres vis. Most not accepting diversions. See below for further.

EXXX/Europe High delays in most Airports in a square containing EGCC/Manchester, EBBR/Brussels, EDDF/Frankfurt, and EDDH/Hamburg. Total of approx 120,000 slot delay minutes in Eurocontrol system. Other high delay airports include EHAM, EGLL, EGKK, EGSS. Check NOTAMs as most are not accepting diversions either. Fog forecast to be similar again overnight.

VTBB/Bangkok FIR A minimum departure interval of 4-8 minutes between same direction departures is in force from 30OCT for aircraft departing VTCC VTCT VTUU VTUD VTSP VTSG VTSF VTSB VTSM AND VTSS. Delays during peak hours are expected.

UUBC/Grabtsevo New Russian Airport now fully operational with 2200m runway (12/30) and able to accommodate international traffic up to A320/737 size.

UHSS/Yuzhno Sakhalinsk, a common Polar alternate, is closed due runway repairs 1200-2100Z until 01DEC and therefore not available as ALTN for Flight Planning.

NTTA/Tahiti will be without radar on 03NOV after 1800Z. As with all radar outages there is potential for delays and restrictions.

KXXX/USA Runway current closures: BWI-RWY 10/28, SEA-RWY 16C/34C, LAS-RWY 7L-25R.

KSFO/San Francisco will close Taxiway Q and B on 07/08NOV to resolve a pavement issue. This will create a one-in-one-out restriction for aircraft taxiing to and from all gates west of Taxiway Q1. Specifically, this will affect United Airlines, SFOs largest customer, as a majority of its gates are west of Q1. Additionally, the proximity of the closure area to Taxiway B1 will render B1 unusable due to insufficient wing tip and jet blast clearance with the construction area. The loss of Taxiway B1 means that access to the end-around Taxiway Z will be unavailable.

HKXX/Kenya No longer possible to obtain a visa on arrival for passengers. Must now be arranged prior to arrival online at <https://account.ecitizen.go.ke/register>.

S000/Cayenne FIR, South Atlantic – Aircraft not FANS 1A equipped, east of 50W in the Cayenne FIR, can now expect a maximum level of FL310 westbound.

EXXX/Europe The European Business Aviation Association (EBAA) is providing a new tool to calculate Passenger Taxes payable in EU countries. The “PaxTax” tool calculates the total passenger tax for the flight, and breaks down the cost for both departure and arrival for the respective national taxing authorities.

YBBN/Brisbane New \$45m international terminal opened 28OCT after 18 months of construction. The facility can handle 7.5m pax annually.

VNxx/NEPAL Fuel supply update: China will supply fuel to Nepal for the first time ever, in response to a dire fuel shortage caused by disrupted supply lines with India. China will supply 1.3 million liters of gasoline, which will be transported to Kathmandu from the border via 100 tanker trucks. Please continue to check local NOTAMs for fuel availability.

DNxx/Nigeria FIR Widespread reports of a strike forcing the closure of Nigeria’s airspace have been deemed unreliable, per the Nigerian CAA. There is unrest and occasional industrial action, but no risk of airspace being closed.

Timezone Changes As DST ends in the Northern Hemisphere, series of clock changes completed on 01NOV as US ended Daylight Savings. Most of Europe completed theirs on 25OCT. Most northern countries are now on Standard Time.

View the complete International Operations Bulletin for 02NOV2015.

Monday Briefing: NAT Track Changes, Russia-Ukraine airline ban

Declan Selleck
18 January, 2016

INTERNATIONAL BULLETIN	ISSUED BY FLIGHT SERVICE BUREAU
	SITA HNLFSXH AKLFSXH AFTN KMCOXAAL EMAIL INTL.DESK@FSBUREAU.ORG



26OCT2015 In around two weeks time, significant changes will occur to the design and structure of North Atlantic Tracks (NAT OTS), which have existed in their current lateral structure since the OTS introduction in 1965. The key changes are: a reduction in separation to **'half-track'** compared to the existing structure, introduction of **24 new Oceanic Entry Points** (OEP's), and a new requirement for **RNP4**. A special briefing on these changes is below.

26OCT2015 With effect from yesterday, almost all Ukrainian and Russian airlines are barred from each others airports and airspace. Ukraine issued a sanctions list in September barring all except one Russian airline from operating, and in return Russia banned the three Ukrainian airlines from operating to Russia. GA, Business Aviation, and non-scheduled flights are not affected.

EGPX/Scottish FIR High delays this morning 26OCT in Scottish airspace due to ATC radio system failure. EGPF/Edinburgh airport departures were suspended, now resumed, with enroute traffic rerouted to avoid Antrim, Galloway, Tay, and Talla sectors. Situation is slowly improving but potential for afternoon delays

exists.

KORD/Chicago O'Hare There will be a TFR in effect for Oct 27 and Oct 28 due to VIP movement. Please see NOTAM 5/1931 for further details.

MMXX/Mexico The impact of Hurricane Patricia was less than feared. MPR/Puerto Vallarta Airport, MMZH/Ixtapa, and MMZO/Manzanillo have all reopened and are operating normally.

KXXX/USA Current runway closures: BWI-RWY 10/28 CLOSED, IAD-RWY 01R/19L CLOSED, DTW-RWY 03R/21L 09L/27R CLOSED, SEA-RWY 16C/34C CLOSED

NAT/North Atlantic ASD15 Exercise Trident Juncture (At Sea Demonstration) military exercise until 31OCT. The designated firing areas incorporate elements of Scottish FIR/UIR, Shanwick and Reykjavik FIR as well as notified UK Danger areas. Flight planning restrictions will be applied affecting NAT Traffic on northerly routes, monitor NOTAMs.

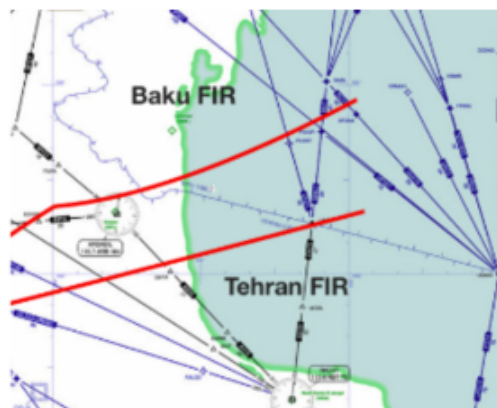
South Pacific Tropical Cyclone Season 2015-16 begins on 01NOV. Tropical cyclone warnings in the South Pacific region, please consult the Joint Typhoon Warning Center, Fiji's regional meteorological center responsible for tropical cyclone warnings in the South Pacific region, or Australia's Bureau of Meteorology.

View the full International Ops Bulletin for 26OCT2015.

Monday Briefing: North Atlantic Changes, Caspian Sea Missiles

Declan Selleck
18 January, 2016

INTERNATIONAL BULLETIN	ISSUED BY FLIGHT SERVICE BUREAU
	SITA HNLFSXH AKLFSXH AFTN KMCOXAAL EMAIL INTL.DESK@FSBUREAU.ORG



19OCT2015 Flight operations in the NAT region will see significant changes in around three weeks time, including new 'half-degree' NAT tracks, new Entry Points in Gander and Shanwick OCA's, and several procedural changes. A Special Bulletin with plotting chart, summarising the changes, will be issued by

Flight Service Bureau next week.

19OCT2015 Last week 26 cruise missiles were launched across International air routes in Azerbaijan, Iraq, and Iran, with reports suggesting 4 did not travel as intended. The risk to aircraft operators is summarised in our International Ops Notice 10/15, see below for details.

RPHI/Manilla FIR, Philippines Typhoon Koppu has maintained its strength as it continues to move northward with slightly increasing forward speed along the shores of Ilocos Sur, Luzon. Current location (1200Z Monday) is to the west of RPLI/Laoag Airport. It is forecast to weaken to a Tropical Storm within 24 hours. No reports of airports affected so far.

OMDW/Dubai World hosts Dubai Airshow 08-12NOV. Landing Permit required for all flights, 3 days processing, standard documents and requirements. Slot required for OMDW, window +/- 5mins. Show details at www.dubaiairshow.aero

OPRN/Islamabad, Pakistan closed 1300-1800 daily due runway works 18-28OCT.

SEXX/Ecuador A new DGAC resolution now effective permits non-scheduled aircraft to land without a Landing Permit as long as the aircraft is operating under private ops, will not stay longer than 72 hours in Ecuador, and visits only one location in Ecuador. The official document is [here](#) (in Spanish).

VHHH/Hong Kong with effect 25OCT (IATA Winter 2015) will amend slot issuing procedures to give priority to operators with higher capacity aircraft, and where same types conflict for the same slot time, lower noise levels.

LIXX/Italy ATC Strike confirmed for 24OCT (Saturday) 0800-1600, service will be provided to Overflights and Intercontinental flights only.

LTXX/Turkey Traffic operating through the south eastern part of Turkish airspace to/from Tehran and Baghdad FIRs should check Notams for restrictions. Several restrictions up to FL310 due to military operations.

EGXX/Shanwick Large scale Military Exercise 'At Sea Demonstration' ASD15 affecting OEP's ERAKA and GOMUP starts on 19OCT.

LFxx/France Datalink implemented from 22OCT LFRR/Brest and LFBB/Bordeaux ACC from 0900L. Initial phase, no ACL (Clearance via CPDLC), and aircraft must be on Eurocontrol whitelist. Ref France AIC A22/15.

VNXX/Nepal continues to experience shortages of fuel due to a halt in shipments coming from India. Available fuel for domestic airlines is rapidly decreasing, and authorities worry that domestic flights will soon be unavailable. The Nepalese government has requested that international airlines carry return fuel or refuel at airports en route, as Tribhuvan International Airport (VNKT/KTM) has no available fuel.

View the full International Ops Bulletin for 19OCT2015.

Monday Briefing: Iraq aircraft ban list

Declan Selleck
18 January, 2016

Iraq: Ban list extended Oct 1st: The list of aircraft banned from operating in Iraqi airspace now included the following: B737-200, B727-1 and -200, Antonov 12, 24, and 26, and the Tupolev 154. Recently, Russia also moved to end the commercial flying career of the smaller Tu-134 by 2012, as a result of safety concerns about the aircraft. Iraq has also a published list including 30 countries that must undergo more rigorous checks before being approved to fly within the Baghdad FIR.

US Restrictions

KPHX-RWY 7R/25L CLSD UNTIL 2200

KBOS-RWY 15R/33L CLSD UNTIL 11/30

KCLT-RWY 5/23 CLSD UNTIL 10/6; RWY 18C/36C CLSD UNTIL 11/15

KMDW-RWY 13L/31R CLSD UNTIL 10/28

KDEN-RWY 8/26 CLSD UNTIL 10/12

KZNY/New York ACC ZNY-OCEANA (QVC) RADAR OTS 15-19Z, SEE ATCSCC ADVZY 018

LFTZ/St. Tropez, France No arrivals permitted Thursday 6th 1240-1530 due to Airport meetings. See NOTAMs.

LGGG/Greece FIR Staffing problems continue. Wednesday 5th strike affects all Greek airports – overflights OK. Thursday outlook is good with 5 sectors operating for LGGG FIR and 3 for LGMD. Minor delays only in Rodos sector from 0600Z. LGZA, LGSA arrivals may be regulated.

LLBG/Tel Aviv Ben Gurion and LLLL/Tel Aviv FIR closed on 07 and 08 Oct for public holiday. Israel Airspace closed 07 OCT 11Z – 08 OCT 18Z. Airport same closure time, first arrival 1930Z, first departure 2030Z on the 8th Oct.

MHTG/Cenamer FIR – Central America Upper Airspace Introducing RNAV5 routes in Nov 17th. 14 new routes will be established. Equipped aircraft should show “R” and “Z” in Field 10, with Field 18 showing NAVI/B1 with B1-B6 showing the type of equipment on board.

FACA/South Africa CAMU (Flow Control) web access undergoing software upgrade 05 Oct 18Z – 00Z, interruption to service likely.

Australia No Delays at primary airports, ops normal.

HDTC/Dar es Salaam, Tanzania The minimum altitude for the arrival routes ETKOP1 (ETKOP-LOSIN) and EVATO 1A have been raised from 10,000 ft to 12,000 ft with effect from October 4th. This info may not appear in NOTAMs.

Flight Planning: Eurocontrol. If you’ve been trying to plan a flight across the EYVL/Vilnius FIR, Lithuania – you will have received an error message that prevents the plan being filed. See this note: VALIDITY FROM : WIE UNTIL 20/10/2011. BECAUSE OF A PROBLEM IN CFMU DATABASE WITH THE DEFINITION OF EYVL UIR, FPLS VIA UL732, UL736, UM870, UM983, UN994 RAISE AN RVSM ENTRY/EXIT CONDITION ERROR. FPLS WILL BE MANUALLY ACCEPTED BY THE IFPS STAFF. THE SYSTEM WILL AUTOMATICALLY INCLUDE THE COMMENT – THIS FPL DOES NOT COMPLY WITH EUR RVSM REQUIREMENT – IN THE ACK MESSAGE AND INSERT IFP/RVSMVIOLATION IN FIELD 18 OF THE FPL, EVEN THOUGH THE FPL IS RVSM COMPLIANT. THE PROBLEM IS FIXED FOR AIRAC 1111.

ORBB/Baghdad FIR Baghdad Control is now responsible for Balad APP – frequency 128.2

SPIM/Lima, Peru Struggling with Airport capacity. A variety of significant restrictions for General Aviation, Non Scheduled, and Cargo flights go into effect Oct 4th. Check carefully with your handler or dispatcher as all movements should be co-ordinated at least 24 hrs in advance from now on.

TTZP/Piarco FIR HF Remains out of service, with all contact through New York Radio instead.

Clipperton Oceanic - a shark infested radio station

Declan Selleck
18 January, 2016



Marisa Brook writes: " For a tropical island, Clipperton doesn't have very much going for it. The tiny, ring-shaped atoll lying 1,000 kilometres off the southwest coast of Mexico is covered in hard, pointy coral and a prodigious number of nasty little crabs. The wet season from May to October brings incessant and torrential rain, and for the rest of the year the island reeks of ammonia. The Pacific Ocean batters the island from all sides, picking away at the scab of land that rises abruptly from the seabed. A few coconut palms are virtually the only thing that the island boasts in the way of vegetation. Oh, and the sea all around is full of sharks. It isn't much of a surprise that Clipperton Island is decidedly uninhabited."

It's definitely an interesting place. The history surrounding its Air Traffic Control, is equally intriguing.

In 1967, according to an entry on Wikipedia, the Soviet Union launched a takeover bid for their airspace – the Clipperton Flight Information Region.

There are two anomalies here. First, the ratio between the island itself, and the airspace that it owns, is huge. Clipperton Island is 6 km². The airspace is 1.8 million square kilometres.

Second, Clipperton Island lies – only just – outside the Clipperton FIR. In 1937, when a Radio Service was first provided here, the island was the closest to the chunk of airspace that it served, giving the airspace its name.

Business was good, for a while – Clipperton Oceanic provided a Flight Information and Weather service on HF to aircraft crossing the Pacific Routes. But, according to the (brief) "History of Clipperton Oceanic", written by P.G. Welkins in 1971, :

"Operations at Clipperton Oceanic ended in 1958, as the HF service offered by Tahiti Radio was seen as sufficient, and funding

provided by American, French, and British governments was stopped. AFTN circuits were disconnected, and the ICAO code NPCX assigned to Clipperton Flight Information Region was withdrawn from use. Staff at the Oceanic Facility were reassigned to Birdlip, in the UK – later to become Shanwick Aeradio."

Welkins also records the last transmission from the operators at Clipperton in 1958:

The last transmission from Clipperton Radio was made on August 28th, 1958:

ALL AIRCRAFT
THIS IS
CLIPPERTON RADIO CLIPPERTON RADIO CLIPPERTON RADIO
THIS IS THE LAST BROADCAST FROM CLIPPERTON RADIO. FOR 21 YEARS
WE HAVE SERVED THE AVIATION COMMUNITY. WE SAY THANK YOU TO ALL
WHO HAVE SUPPORTED AND USED OUR STATION. WE ARE PROUD TO HAVE
BEEN PART OF A HISTORIC ERA IN PACIFIC DISCOVERY.
THE MANAGER AND RADIO OFFICERS WISH YOU FAREWELL FROM
CLIPPERTON RADIO/CTX

And there ends the aviation history of Clipperton Oceanic.

The island itself, though – has more to tell. It's actually named after an English Pirate, John Clipperton – who in his activities attacking Spanish targets on the west coast of the Americas, used Clipperton Island as a base from which to stage his attacks and store loot and supplies, fortifying Clipperton Rock and expanding its cave network. That was just the start of a long and interesting history – for which it is well worth reading Marisa's article in full.

Monday Briefing: Typhoon Vongfong, Hajj 2014

Declan Selleck
18 January, 2016

08OCT2014: Typhoon Vongfong is making its way toward the U.S Northern Mariana islands of Guam, Rota, Saipan, and Tinian. Typhoon Vongfong notably increased in strength between 0300 and 0900 UTC on 07OCT, north of Yap and had maximum sustained winds of 120 Kts and gusts of 145 kts. Vongfong is expected to reach Super Typhoon status within 24 hours. Meteorologists forecast it will continue moving west-northwest for 36-48hs and then turn north and begin to weaken. There are currently no NOTAMs detailing any closures or restrictions. Tropical Storm Simon is currently off the West coast of Mexico and is continuing to weaken as it makes its way towards landfall. It is not affecting operations.

08OCT2014: Hajj 2014 Routes and temporary regulations have been implemented ahead of the 2014

Hajj season. All flights originating from West and Central West Africa have a set of dedicated routes. Operators must advise the following FIR's a minimum of 10 days in advance of the intended operations and include full aircraft details, schedule, and RVSM approval status: Algiers, Accra, Brazzaville, Dakar, Jeddah, Kano, Khartoum, N'Djamena, Niamey, Roberts, and Tripoli. For a full list of requirements and route details please refer to the AIP Supplement.

Exxx/Europe The deadline set by the European Commission for operators to be ADS-B compliant has been delayed until June 8th, 2016 for new aircraft and June 7th, 2020 for aircraft being retrofitted.

UKFV/Yevpatoria Center has published a new list of route closures extending till the 30th of December, a geographical representation of the closures can be found [here](#).

BGGL/Sondrestrom FIR has published new addresses for the Rescue Coordination Center (AFTN BGGHYCYX, Email: rcc@navair.dk, Telephone/Fax +299363318/+299363319), Communications Center (AFTN BGGHYFYX, Telephone +29936330428), and Flight Information Center (email fic@navair.dk, Telephone/FX +299363304/+299363309)

HECC/Cairo advises that all flight plans must be submitted in the proper format as outlined in the AIP no later than 150 mins prior to estimated time of block and no earlier than 24 hrs prior to estimated time of block.

SBGR/Sao Paulo General aviation and airlines performing cargo charter or cargo operations must inform airport officials (+551124454313) prior to operation who the handling company will be and intended time on the ground. Aircraft falling into category A-B must advise at least 6 hrs in advance, aircraft falling into category C-E at least 24 hrs in advance, until the 15th of Dec.

MYEM/Governors Harbour has no JET-A or AVGAS available until the 30DEC.

MMSD/Los Cabos will only be open for government and humanitarian flights from 1300-2359 until 08OCT; may continue.

Mexico CAA reminds operators to carefully review that their flight plan complies with active airways, NOTAMS, and military exclusion zones before filing. Failure to do so will result in the flight plan being rejected.

URSS/Sochi Ahead of the 2014 Russian Grand Prix the airport advises that operators planning on flying into Sochi from the 6th of Oct until the 16th of Oct will require to obtain an arrival and departure slot from the airport authority. Cargo operators will have to disclose the full details of the cargo contents to secure a slot. Any operator in excess of 30 mins either prior to ETA or after ETD will require a new slot, failure to do so will result in a fine. Parking limitations will also be imposed during this time, aircraft with an MTOW of 35-70 tons are allowed to park for a maximum of 30 mins, all heavier aircraft are allowed up to 2 hrs.

DNMA/Maiduguri is now closed to all civil air traffic due to the increased security concerns.

West Africa/Ebola Update. Advice is against all non-essential travel due to the outbreak of the Ebola virus. Efforts to contain the outbreak are resulting in critical commercial and transportation disruptions in all three countries. Cameroon Officials have closed all borders with Nigeria and suspended all passenger flights to/from Nigeria due to the ongoing Ebola virus outbreak. Cape Verde Through 21 November, officials are prohibiting entry of any foreign non-resident who has visited any country affected by the hemorrhagic fever caused by the Ebola virus in the last 30 days. Cote d'Ivoire Commercial airliners are prohibited from carrying passengers from Guinea, Liberia, Sierra Leone, and Nigeria to Cote d'Ivoire due to the Ebola virus outbreak. All passengers will have their temperature checked upon arrival from any destination. Senegal Departures and arrivals from Senegal to Guinea, Liberia, and Sierra Leone are prohibited due to the Ebola virus outbreak.

Monday Briefing: Tripoli Airport Destruction, Israel Uncertainty

Declan Selleck
18 January, 2016

Tripoli Airport Destruction 24JUL Since fighting began over a week ago, some reports indicate that 80-90% of the aircraft currently parked at the airport have been damaged. Libyan authorities have indicated that repairs to the airport and ATC infrastructure will take months to repair.

Israel Uncertainty Continues 24JUL - Operations to LLBG/Tel Aviv and Israel in general continue to be fluid. A rocket strike some days ago landed within a few miles of the airport; airlines responded by suspending services. The operational risk needs to be closely monitored.

HLLL/Libya According to our latest information, the only International airports that are currently open within Libya are HLLQ and HLTQ between 0700Z-1900Z. If permission is given to operate into these airports there are mandatory routings to follow.

LIML/Milan The airport will be closed daily between 2130-0400z from 21-31JUL.

EGFF/Cardiff All non scheduled traffic requires prior notice from 02-06SEP. Operators must contact Airport Coordination Limited at manchester@acl-uk.org or at +441614911850.

VABB/Mumbai In attempt to reduce airspace congestion and arrival delays within the Mumbai TMA, ATC will only accept flights with pre approved arrival slots between 1545Z-1745Z for flights originating within India.

ZSHA/Shanghai FIR Typhoon Matma is making its way towards mainland China after Taiwan. Delays and reroutes can be expected and those planning to operate within this area are advised to check daily notams for the latest reroutes.

LLOV/Ovda Cargo operations have been suspended until the end of July; only passenger flights will be accepted.

URKK/Krasnodar has new runway open from today 24JUL, 05/23 Center. The previous runway 05R/23L is closed.

Singapore There are new permit regulations in practice that apply to charter and air ambulance operations. Operators are now required to apply for a "Operations Permit" and "Air Transport Permit" before they will be given arrival slots. An Operations Permit must first be obtained before an Air Transport Permit can be granted, and this replaces the requirement for a landing permit. These new regulations do not apply to aircraft planning a tech stop within Singapore.

India says within the next 6 months nationals of 40 countries will be able to obtain an E-Visa that will be accepted at 9 airports. A list of nationalities and airports will be published soon.

Monday Briefing: Libya airspace closed, MAS17 Ukraine Special Report

Declan Selleck
18 January, 2016

Libya airspace closed 18JUL Since 14JUL international overflights are not permitted over Libya due to security concerns raised since the rocket attack on Tripoli last week. Only a small number of airports remain open in the country, see below.

MAS17: Ukraine Special Report 18JUL – Following the tragic loss of MAS17, authorities have been quick to close portions of Ukrainian airspace and provide re-routing options. See below for a special briefing; a PDF is also available.

HLLL/Tripoli FIR Effective 14JUL no international overflights are permitted over Libya due to security concerns. All international flights departing to/from any airport within Libya will require prior permission. Applications should be made via email at naser.mohamed@caa.ly, fax +218213618075, or via AFTN: HLLTYAYA. If permission is given there are now mandatory routings to and from HLLQ and HLTQ. HLLB, HLLT, and HLLS are closed UFN.

LCCC/Nicosia FIR Due to the large increase in military activity within this FIR, delays can be expected UFN for all flights destined to OLBA and LLBG. OLBA departures flying to/via Egypt exiting Cyprus airspace over LAKTO or PASOS are restricted at the rate of 1 departure every 25 minutes.

UKxx/Ukraine FIR's There are two distinct areas at issue in the Ukraine. Simferopol FIR is closed to international traffic since 03APR due to a dispute between authorities over control. Dnipropetrovsk FIR has had the eastern half closed by the Ukrainian CAA on 18JUL following the shutdown of MAS17. Most operators are avoiding the entire FIR. The remainder of the Ukraine FIR's are open (L'viv, Kiev, Odessa) with overflight risk minimal, but many operators avoiding entire country. Heaviest Traffic flows are via G724 (North) and UL852 and UP975 (South). Russia will accept reroutes by FPL for an interim period without permit required. Recommend check with ATC Duty Manager +7 495 601 0776. Turkey requires a permit for all overflights. Russia reports no capacity issues in Rostov FIR due to additional traffic to the east of Ukraine. We recommend to monitor Eurocontrol NOP Portal for current information.

LLLL/Israel FIR Due to the ongoing conflict in the region J5, J10S, and J9 have been closed and all aircraft are being diverted along other airways within LLLL FIR. There have also been mandatory adjustments made made to all STARS and SIDS into LLBG.

FOON/M'vengue, Gabon – JetA1 fuel will not be available from until September earliest.

SAEF/Ezeiza ACC until 05AUG at 0500z, flow control will only be accepting 1 aircraft every 10 minutes regardless of the entry point. Humanitarian, state, and international flights with more than 2 hrs flight time are exempted.

OAKX/Kabul ACC- ATC has advised that all aircraft entering Kabul FIR at or below FL290 from the west between SOKAM on V338 and RANAH on V838 , must now contact Kabul ACC on 121.725.

OMAE/Emirates FIR Starting 16 JUL until 16 OCT all aircraft departing from OMAA, OMAD, OMAL, OMAM, OMDB, OMDW, OMRK, and OMSJ will require a departure slot time between 0430-0730 and 1500-2359

DNMA/Maiduguri will be closed to all civil air traffic until September earliest due to security concerns.

EGNT/Newcastle Due to the Sunderland Airshow all aircraft require prior permission from 25JUL/1100z until

28 JUL/1100z.

VYYY/Myanmar A live fire drill exercise will be taking place on July 24th between 0730-0815Z which will close the airport.

South Africa Starting October 1st 2014, new visa regulations will require all parents or guardians accompanying children to carry an unabridged birth certificate and passport. This applies to all tourists.

Hong Kong - In attempt to improve the local noise environment the Civil Aviation Department will be implementing the termination of slot allocations for aircraft that fall into the category of "Marginally Compliant Chapter 3" (MCC3). Aircraft that generally fall into this category are B727, B737-100, B737-200, B747-100, B747-200, B747-300, and DC10's. Slots for Winter 2014 will not be given between the hours of 2300-1459z for aircraft that fall into this category.

Mexico The DGAC has revised the restrictions that were imposed in April on non-revenue business flights. Under the previous regulation any aircraft placed in a charter management company structure were prevented from operating privately in Mexico. Under the revised regulation, which is retroactive to 03JUN, U.S. and foreign-based operators flying aircraft on a charter certificate but conducting private, non-revenue operations to Mexico have been given a reprieve from cabotage rules.

Monday Briefing: Atlantic Storm, Peru Airspace changes

Declan Selleck
18 January, 2016

First 2014 Atlantic storm 02JUL Tropical Storm Arthur, which may become a hurricane by 04JUL, is the first of the 2014 Atlantic Storm season, and is tracking north east along the coast of Florida. FAA Telcon today at 1230Z.

Peru Airspace Changes 02JUL Peru will introduce significant changes to the airspace configuration and ATS route structure in Lima, Arequipa, Cusco and Pucallpa on 24JUL. AIP Amdt 18/14.

Kxxx/USA Tropical storm Arthur lies off the coast of Florida this morning, with sustained winds of 40 knots and a tracking speed of 2-3 knots. Forecasters are suggesting it has the potential to become a hurricane with landfall in the Carolinas. An FAA Telcon is running at 1230Z and 2200Z today, phone +1 540-359-3200 PIN 2333#.

The holy month of Ramadan started on 29JUN, affecting operations to and over all Islamic countries where CAA's will be working reduced hours. The period moves forward by a couple of weeks each year. This year it will run until 27JUL.

PKMJ/Majuro ExxonMobil will be unable to fuel during their monthly tanker replenishment from 29JUN-02JUL. An alternative Pacific fuel stop is recommended during this period.

LIRP/Pisa, Italy had a radar failure on the morning of 02JUL, traffic is regulated until late afternoon, with moderate delays.

EINN/Shannon will be closed on the night of 04JUL until 1am local for a charity event. During this period

consider EIDW/Dublin as an alternative for North Atlantic alternates.

EFTU/Turku, Finland is temporarily shut down from 30JUN-27JUL 2014 for a four-week renovation process. The renovations include the airport's terminal facilities and traffic areas. Four new aircraft parking spaces will be built as well.

UDD/Domodedovo Due to Airport reconstruction heavy aircraft types are not permitted to operate during the period 27JUN-30SEP; specific exclusions are: B747, B757, B767, B777, B787, A310, A330, A340, A380, AN124, IL96, TU204, and TU214.

UMMS/Minsk 2- The airport will be closed from 1810-1830z from 01JUL-03JUL, 2110-0120Z on 04JUL, and 2110-0200Z on 11,18, and 25JUL.

DIAP/Port Bouet is closed to all traffic from 0230-0800Z on 02, 03, 04, and 06 JUL.

FAWW/Sodwana The airport will be completely closed from 12JUN-08SEP

FMMO/Maintirano Jet A1 will not be available from 14JUN-14SEP, due to upgrades taking place at the fuel facility.

VMMC/Macau - The airport will be closed on Sundays, Tuesdays, and Thursdays from 2000-2200 from 29JUN-28SEPT.

YPXM/Christmas Island will now be closed 2300-1100z 05JUL-07JUL, and 08JUL-10JUL

NVTV/Port Vila Until 10JUL, Jet A1 will not be available here to non scheduled flights.

MYEM/Governors Harbour has no fuel available until 30SEP

Gambia From 06JUN until 07SEP the issuing of overflight and landing permits at GBYD (Banjul International), will be handled by the department of Flight Safety Standards (DFSS).

United States Independence Day is celebrated on 04JUL and as such all public offices will be closed.

Australia The full procedures for the upcoming G20 conference in November have been published. The event is scheduled in Brisbane between 15-16NOV2014 , although special operating procedures will take place from November 11-18NOV2014. All the details are outlined in their latest AIP Supplement H62/14.

Monday Briefing: Belgium ATC Strike, France Delays

Declan Selleck
18 January, 2016

Possible Belgium ATC Strike 25JUN A decision is expected by 1000Z today on possible Industrial Action in Belgium. If it goes ahead, it will start at 1500Z with sporadic work stoppages rather than a blanket closure.

France Strike: High Delays 25JUN Wednesday will see extensive delays again through French Airspace, with over 300,000 delay minutes already showing in the slot system. Re-route options are published

though these will also be subject to CTOT delay. Further below.

LFXX/France The strike is continuing as planned, and although Union negotiation is taking place, there is no indication that it will not continue for the full 6 days originally forecast. For tactical information and re-route suggestions, use the Eurocontrol NOP. A teleconference will take place this afternoon European time at 1100Z. Dial-in number: +32 2 401 54 26. Participant PIN code: 38557308#.

EGCC/Manchester and EGLL/London Heathrow are not available as alternates during the period of the French strike.

NTAA/Tahiti is renewing the runway from mid July to beginning of January 2015 and specific opening hours will apply from this point onwards. Direct arrival in Bora Bora or any other island is possible with an advance notice of 21 days.

TNCA/Aruba will be closed daily until 1100Z until 01JUL.

EINN/Shannon Airport will be closed on the night of 04JUL from 2145-0100Z due to the main runway being used for a charity event. Operators using EINN as a North Atlantic alternate should consider EIDW/Dublin instead during this period.

FMEE/Reunion Island Volcano Piton La Fournaise on Reunion Island has erupted although there is currently no ash plume reported.

DIAP/Abidjan The airports' only runway will be closed 24-29JUN from 0230-0800Z.

DAAA/Algiers Area Control Centre has a new combined telephone and fax number from 24JUN: + 213 23 90 76 10.

FEFF/Bangui, Central African Republic extends Jet A1 unavailability until end of July.

HDAM/Djibouti has their Independence Day on 27JUN. No traffic is permitted to operate overnight, until 1000Z.

HSSJ/Juba has advised that runway maintenance will begin at 1300Z each day 01JUL, closing the main runway.

MZBZ/Belize is taking their SSR radar off the air for the month of July, meaning a procedural only approach control service and likely delays during high traffic periods.

French Polynesia effective 25JUN new phone numbers are in place for Tahiti and all French Polynesia islands. Mobile numbers have an "87" added after the country code, land line numbers have a "40".