

Renewed Vanuatu Runway concerns

Declan Selleck
3 August, 2016



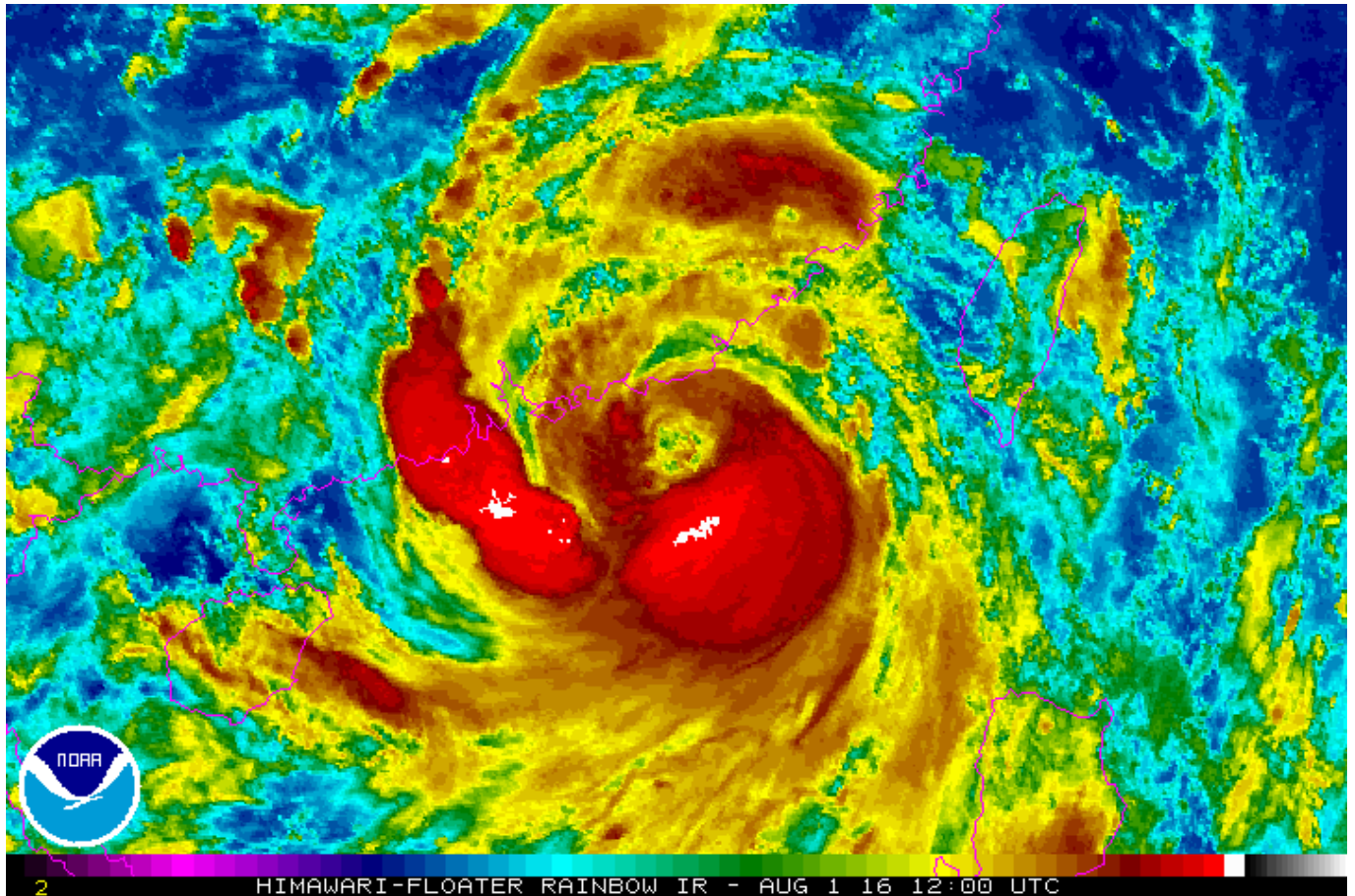
Following interim repairs to the runway in Port Vila (NVVV/VLI) earlier this year, concerns have been raised once again about the condition of the runway. On Monday, the Airport Authority notified an issue with some loose pieces on the runway, and repaired those – but some operators have chosen not to operate. Inbound flights were diverted. Currently, Air NZ is not flying to Vanuatu and awaiting a comprehensive upgrade to the runway.

Typhoon Nida - or is it the End of the World?

Declan Selleck
3 August, 2016

Typhoon Nida is enroute to Hong Kong, and will make landfall early on Tuesday morning. Now, we know that The Weather Channel and other mass media outlets enjoy exaggerating the picture somewhat, but the below NOAA graphic seems disproportionate as well.

With forecast average winds of around **40 knots** (that's a wet Wednesday in Ireland), and maximum maybe 70 knots – the impending doom depicted in the graphic below seems overstated. Has NOAA fallen victim to sensationalism? We wonder.



Midweek Briefing 27JUL: Iceland Strike Over, Brazil Olympic Ops Update

Cynthia Claros
3 August, 2016

INTERNATIONAL BULLETIN

ISSUED BY FLIGHT SERVICE BUREAU

SITA HNLFSXH AKLFSXH AFTN KMCOXAAL

EMAIL INTL.DESK@FSBUREAU.ORG



Iceland Strike Over 27JUL It's been promised a few times over the last few months but then closures continued – but what we can tell you is that: There was an agreement on July 18, that appears to be holding. Read the article.

Brazil Olympic Ops Update 27JUL The opening ceremony of the 2016 Olympics in Brazil is on 5AUG, in Rio de Janeiro. There are a ton of airspace restrictions, slot controlled airports, and changes from 19JUL-23SEP. Here is a summary.

LRBB/Bucharest FIR Crews have experienced several 'fake' calls on 121.5 within the Bucharest ACC airspace. No reports of control instructions being issued, but operators should be aware of the situation.

SKZZ/Colombia On 25 July, the Colombian health ministry declared the Zika epidemic to be over in the country. The epidemic began in September 2015 and peaked in March of this year. A total of approximately 100,000 Colombians were infected. While authorities believe outbreaks will continue, the number of cases reported is expected to decline.

LTBA/Istanbul has issued a long list of restrictions to discourage additional flights from operating to LTBA. New requests for charter flights are denied. LTBA cannot be carried as an alternate on your FPL.

TNCC/Curacao has daily work on the main runway throughout August. Some closures and shortened lengths. Check for latest with Airport operations on CAP OPS(+5999) 8391030/31/32.

To view the full International Bulletin 27JUL2016 Join OPSGROUP

Join OPSGROUP

Iceland ATC Strike Over

Declan Selleck
3 August, 2016



We say the words with trepidation, because it's been promised a few times over the last few months but then closures continued - but what we can tell you is that:

- There was an agreement on **July 18**, that appears to be holding
- There have been no closures of BIKF, BIRK, or BIRD in the last week or so.

With that in mind we think it's safe to say that the strike is over, and it should be Ops normal through Iceland from now on.

US Customs and TSA fines higher

Declan Selleck
3 August, 2016



From August 1, fines and penalties for getting your CBP Arrival/Departure manifest wrong will increase. That means, screw up the eAPIS and you are looking at a fine of **\$1,312** instead of \$1,100.

Similarly, the fee for non-compliance with landing requirements at designated ports of entry for aircraft transporting aliens (yes, they still use that word) was \$3,200, and the penalty will now be **\$3,563**.

Penalties for certain Transportation Security Administration (TSA) violations have also increased, from \$10,000 to **\$12,865**.

As usual there is an original source document published in Russian, available here:
<https://www.gpo.gov/fdsys/pkg/FR-2016-07-01/pdf/2016-15673.pdf>

Brazil Olympics - Ops Update

Declan Selleck
3 August, 2016



The opening ceremony of the 2016 Olympics in Brazil is on **August 5**, in Rio de Janeiro.

From July 19 - Sep 23 (because the Paralympic Games follow), there are a ton of airspace restrictions, slot controlled airports, and changes. So here's the shortest current summary we can manage:

1. The primary info doc is Brazil AIC 07/16. 122 pages and tough to read, to be honest.
2. **Slots:** Airports: SBBH, SBBR, SBCF, SBGL, SBGR, SBKP, SBRJ, and SBSP - but that may change according to traffic. ANAC (The Civil Aviation Authority) will allocate ATC slots for airlines and commercial aircraft. CGNA (The ATC Command Centre) will allocate slots for GA and private flights: centralslotsuporte@cgna.gov.br.
3. **Host cities:** Belo Horizonte, Brasilia, Manaus, Rio, Salvador, Sao Paulo.
4. **Restrictions:** Different colours, a multitude of restricted airspace all stemming from the AIC above. Nevertheless, apparently no changes to SID/STARs.
5. **Zika:** Seems not to be the big deal it was before. Less mosquitoes in winter.
6. **Visas:** June 1 - Sep 18 - US, Canada, Japan, Australia: no visa required for tourists. No change to crew visa requirements (not required if on Gendec, in uniform)

Reference Links:

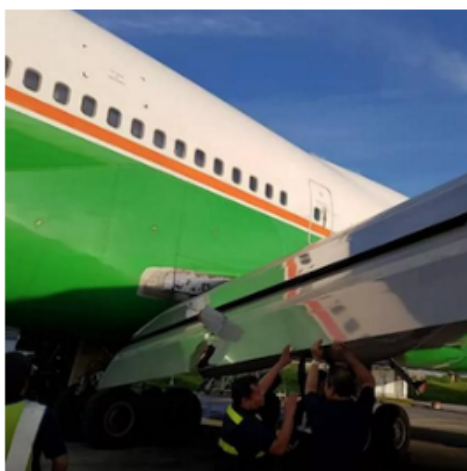
- **Main**
AIC: <https://ops.group/blog/wp-content/uploads/2016/07/Brazil-AIC-0716-Olympic-Games.pdf>
- ANAC - <http://www.anac.gov.br/>
- CGNA Portal - http://portal.cgna.gov.br/?l=en_uk

Midweek Briefing 20JUL: Manila Runway Damage, Africa Hajj Routes Take Effect

Cynthia Claros
3 August, 2016

**INTERNATIONAL
BULLETIN**

ISSUED BY FLIGHT SERVICE BUREAU
SITA HNLFSXH AKLFSXH AFTN KMCOXAAL
EMAIL INTL.DESK@FSBUREAU.ORG



Runway damage at Manila 20JUL The main runway at RPLL/Manila, RWY 06/24, was closed on Monday 18JUL after heavy rain caused large chunks of asphalt to disintegrate. [Read the article.](#)

Africa Hajj routes take effect Starting tomorrow, the Africa Hajj routes for 2016 will take effect in the Algiers, Accra, Brazzaville, Dakar, Kano, Khartoum, N'Djamena, Niamey, Roberts, and Tripoli FIR's. [Read the article.](#)

LTZZ/Turkey The FAA has cancelled KICZ Notam A0015/16, thereby lifting all the restrictions that were put in place on Friday night last. There are now no restrictions on US operators or FAA licensed crews operating to Turkey. [Read full article](#)

LIZZ/Italy The Italian ATC Strike that we've been listing for the last few weeks is now confirmed for Saturday 23JUL. The times vary a little for each unit - AIS and MET are out for the day, 0800-1600Z, other units are similar but some are just 1100-1500Z. As with previous strikes, overflights are unaffected, as are international arrivals. Some international departures are approved for exemption. If you are planning a flight to Italy on Saturday, expect some disruption, and check with handler/local airport in advance for specific situation for your flight.

GUZZ/Guinea has updated contact information for overflight and landing permit requests through the Air Navigation Agency (ANA) of Guinea. Primary email is now ana-dg@ana-guinee.com, and we suggest to copy diante223@yahoo.fr. Telephone is +224 622 68 44 52

LBPD/Plovdiv has fuel issues. If you need a large uplift, contact them in advance to confirm availability:

operations@plovdivairport.com, or SITA PDVAPXH.

VTBB/Bangkok have an agreement with the Singapore ATFMU/Flow management unit. If operating BKK-SIN on a Saturday, then you'll get a CTOT and must contact Bangkok ground/clearance 20 mins in advance to confirm you can make it.

To view the full International Bulletin 20JUL2016 Join OPSGROUP

Join OPSGROUP

Runway Damage at Manila

Declan Selleck
3 August, 2016



The main runway at RPLL/Manila, RWY 06/24, was closed on Monday 18JUL after heavy rain caused large chunks of asphalt to disintegrate. One of the last aircraft to land, shown below, suffered damage to an inboard flap section.

At least 10 flights diverted to Clark International Airport (RPLC/CRK), 50nm northwest of the city.

The runway was tentatively reopened on Tuesday, but consideration to future similar issues should be given, if further rain occurs.



FAA rescinds Turkish ban - ops normal

Declan Selleck
3 August, 2016



Update: 18JUL - KICZ NOTAM cancelled, the restriction mentioned below is lifted ...

This article contains restricted content ... full article available to OpsGroup members.

Following the attempted coup in Turkey on 15JUL, **the FAA has banned all US airlines**, commercial operators, and pilots from flying into Turkey until the 1st of September, and says it will review that position on August 15th.

The ban applies to all airport within the Istanbul (LTBB) FIR and the Ankara (LTAA) FIR – which together cover the entire country, but does not prohibit entry into the FIR's or overflying Turkey.

Further more, **no direct flights are allowed between Turkey and any US Airport**. This is independent of the country of registry of the aircraft, and so applies to all operators, N-reg and others.

Specifically, the ban affects all US Airlines and Air Carriers, US commercial operators, and private operators in that anyone using an FAA license may not operate to Turkey. The only exception applies to US pilots working for a foreign airline.

The ban was issued quickly in response to the Coup attempt, and because of the unstable situation in Turkey. We suspect that it may be removed more quickly than August 15th, but that depends on further developments there.

These are the primary international airports affected by the ban:

LTAC	ESB	Ankara
LTAF	ADA	Adana

LTAI	AYT	Antalya
LTAJ	GZT	Gaziantep
LTAN	KYA	Konya
LTAT	MLX	Malatya
LTAU	ASR	Kayseri
LTAZ	NAV	Nevsehir
LTBA	IST	Istanbul
LTBJ	ADB	Izmir
LTBR	YEI	Yenisehir
LTBS	DLM	Dalaman
LTCG	TZX	Trabzon
LTFE	BJV	Bodrum
LTFH	SZF	Samsun
LTFJ	SAW	Istanbul

The original NOTAM from the FAA, issued on Saturday morning, is copied below.

A0015/16 NOTAMN

Q)KICZ/QRDXX/IV/NB0/W/000/999/5405N12217W999

A)KICZ

B)1607160150 C)1608312359 EST

E)SECURITY..UNITED STATES OF AMERICA ADVISORY FOR TURKEY

THOSE PERSONS DESCRIBED IN PARAGRAPH A BELOW ARE NOT AUTHORIZED TO FLY INTO OR OUT OF ANY AIRPORT LOCATED WITHIN THE ISTANBUL (LTBB) OR ANKARA (LTAA) FLIGHT INFORMATION REGIONS (FIR).

A. THIS NOTAM APPLIES TO: ALL U.S. AIR CARRIERS AND COMMERCIAL OPERATORS ALL PERSONS EXERCISING THE PRIVILEGES OF AN AIRMAN CERTIFICATE ISSUED BY THE FAA, EXCEPT SUCH PERSONS OPERATING U.S.-REGISTERED AIRCRAFT FOR A FOREIGN AIR CARRIER AND ALL OPERATORS OF AIRCRAFT REGISTERED IN THE UNITED STATES, EXCEPT WHERE THE OPERATOR OF SUCH AIRCRAFT IS A FOREIGN AIR CARRIER.

B. NO PERSON OPERATING AN AIRCRAFT, REGARDLESS OF REGISTRY, MAY DEPART TURKEY TO ANY UNITED STATES AIRPORT.

THE JUSTIFICATION FOR THIS ADVISORY WILL BE RE-EVALUATED BY XX 15 AUGUST 20172016.

F)SFC G)UNL

Midweek Briefing 13JUL: South Sudan off limits, New Zealand airport strike off

Cynthia Claros
3 August, 2016

**INTERNATIONAL
BULLETIN**

ISSUED BY FLIGHT SERVICE BUREAU

SITA HNLFSXH AKLFSXH AFTN KMCXAAL
EMAIL INTL.DESK@FSBUREAU.ORG



South Sudan off limits 13JUL The security situation in Juba, and South Sudan, has deteriorated in the last week, with HSSJ/JUB becoming off limits due to fighting. [Read the article.](#)

New Zealand airport strike off 13JUL A planned strike by Aviation Security across airports in New Zealand, which would have led to wide scale disruption, has been called off at the last minute. [Read the article.](#)

BGBW/Narsarsuaq Current hours are Monday to Saturday 1000-1900Z. If you want to plan a visit outside these hours, or even use BGBW as an alternate, get permission from bgbw@mit.gl in advance. There will be additional costs, especially heavy on a Sunday.

SBZZ/Brazil is the latest country to wield the threat of shooting down aircraft. Last month we reported on the same language from Sudan, in reference to overflight permits. Brazil's firm stance is in relation to the Olympic Games, and says that unidentified aircraft that violate the protected airspace around facilities of the Olympic Games in Rio de Janeiro. "We are not playing," said Defence Minister Raul Jungmann. This is more of concern to a lost C172 than commercial flights (unlike Sudan, which is the reverse), but worth being aware of.

EGPZ/Poland has effectively dispensed with the Schengen agreement for now, expect full border controls at all international airports (ie. Passport check, Gendec).

EGPZ/Scottish FIR The military are carrying out some GPS jamming trials over the ocean from 12-29JUL. If you're operating in the region of Benbecula VOR, especially west of it, be aware that your GPS might stop working.

OAKX/Kabul Aircraft in the eastern sections of the Kabul FIR can expect some radio issues, as a comm unit (VSAT at Ghanzi) is out of action. The advice from ATC in Afghanistan is to keep trying the assigned frequency until within range of a different transmitter; in the meantime, a bit of SLOP, IFBP and TCAS should keep you out of trouble. See full article.

MKZZ/Jamaica Significant increase in the number of confirmed cases of Dengue fever in Jamaica during the first half of 2016. Dengue fever is endemic to Latin America and the Caribbean and can occur throughout the year.

ENZZ/Norway FIR Plans are afoot to raise the transition altitude to 18,000ft. It's an age old question, why does Europe have different TA's, and the US has just one? Together with surrounding countries, and the Irish FAB, this looks to be changing - but it may take a little while. See Norway AIC 7/16.

YBBB/Brisbane FIR (and Melbourne) will be updating their software on the night of 20JUL, with a hefty 6 hour outage of CPDLC and all the other good stuff.

OAMS/Mazar-E-Sharif Fuel payment is now only accepted in cash.

NZZZ/New Zealand A planned strike by two airport workers' unions and New Zealand's Aviation Security Service (Avsec) will now not go ahead. The unions sought increases in compensation, and negotiations on their demands will take place in the coming weeks. Read the article

EYPH/Paluknys is a new location indicator for the airport in Lithuania.

ZBDS/Edros - Ejn Horo, China will open to foreign flights this month. We did battle with AIP China for 30 mins to get further info but lost the fight. If you know more, tell us and we'll share.

HSZZ/South Sudan The ceasefire announced on 11 July is holding. Juba International Airport (HSSJ/JUB) is open to charter operations; however, commercial flights have yet to resume. U.S. government aircraft evacuated personnel on 12 July; however, a security message issued by the embassy later in the day advised U.S. citizens to continue to shelter in place and not attempt to travel to the airport. Meanwhile, other countries, such as Japan, Uganda, and Germany plan to send military aircraft to evacuate their nationals.

SEZZ/Ecuador A large earthquake (6.4) struck on 10JUL just east of Muisne, on the northwest coast of Ecuador. The quake had a shallow depth and followed 10 minutes after another earthquake that had a magnitude of 5.9. Although strong tremors were reported in Esmeralda and Quito, there were no immediate reports of damage. The Pacific Tsunami Warning Center did not issue a tsunami warning following the quake.

UZZZ/Mt. Klyuchevskoy, Russia continues to produce ash that extends up to 25,000 feet. Movement is towards the east at 10 knots.

PZZZ/Pacific Two hurricanes to monitor: The National Hurricane Center is issuing advisories on Hurricane Celia, located more than 1000 miles west-southwest of the southern tip of the Baja California peninsula, and on Tropical Storm Darby, located several hundred miles west-southwest of Manzanillo, Mexico. Tropical Storm 05E (Darby) is on a strengthening trend...and may reach category 1 hurricane stage over the open ocean in a couple of days. For now both are expected to remain offshore.

DGZZ/Ghana African Union nationals whose countries do not have a visa-free agreement with Ghana are now eligible for a 30-day visa-on-arrival for business and tourism. The visa-on-arrival program will be

piloted for three months starting at Kotoka Airport and will be extended to other ports of entry in the future. Travellers can extend their visa upon expiry in Ghana, and business travellers can apply for a longer-term visa at a Ghanaian consular post.

BIZZ/Iceland ATC Strike continues, primarily affecting BIKF/Keflavik, BIRK/Reykjavik, and BIRD/Reykjavik Oceanic for International Operators. Restrictions on landing, eastbound, and westbound overflying traffic. Read the article

LTBB/Istanbul FIR If you've got some time on your hands, have a look at the Greece-Turkey great NOTAM argument of 2016. This is an almost annual performance, the equivalent of a street argument between two kids.. If you're busy, just skip all of it when they appear on your Pre Flight Briefing for Turkey or Greece (which they will).

View the full International Bulletin 13JUL2016

The annual Greece v Turkey NOTAM battle

Declan Selleck
3 August, 2016



If you've got some time on your hands, have a look at the Greece-Turkey great NOTAM argument of 2016. This is an almost annual performance, the equivalent of a street argument between two kids.

If you're busy, just skip all of it when they appear on your Pre Flight Briefing for Turkey or Greece (which they will). Some of the highlights are below.

Obviously, this is a squabble that would be best for everyone to be kept out of the NOTAM database, but someone started it ...

LTBB/ISTANBUL/SEHIR-CITY A2999/16 11JUL 0414Z

- NAVIGATIONAL WARNING TO ALL CONCERNED:

THIS NOTAM IS ISSUED TO CLARIFY THE A1490/16 LGGG NOTAM ISSUED BY GREEK CAA.

AS REGARDS THE GREEK NOTAM A1490/16, **TURKEY DOES NOT ACCEPT THE DEFINITION OF THE SEARCH AND RESCUE (SAR) AREA WITH REFERENCE TO ATHENS FIR.** THE AREA REFERRED TO IN THE SAID GREEK NOTAM FALLS WITHIN TURKEY'S MARITIME SEARCH AND RESCUE REGION (SRR) AS DECLARED TO THE IMO AND INCLUDED IN THE IMO'S GLOBAL SAR PLAN. THEREFORE, ALL SAR EFFORTS/ACTIVITIES WITHIN THE TURKISH SRR MUST BE COORDINATED WITH THE RELEVANT TURKISH AUTHORITIES. 11 JUL 04:00 2016 UNTIL 14 JUL 02:30 2016.

LGGG/ATHINAI A1496/16 11JUL 1201Z

-

FURTHERMORE THE SAID ATHINAI/ISTANBUL FIR BOUNDARY WAS DEPICTED ON CHART NUMBER 7 ATTACHED TO THE REGIONAL AIR NAVIGATION AGREEMENT WHICH WAS REACHED IN THE THIRD REGIONAL AIR NAVIGATIONAL CONFERENCE (PARIS 1952) AND SUBSEQUENTLY APPROVED BY THE ICAO COUNCIL ON 23 JUNE 1952.

ACCORDINGLY, GREECE HAS BEEN ASSIGNED RESPONSIBILITY FOR ALL ATM SERVICES AND ICAO PURPOSES AS WELL AS FOR SAR OPERATIONS WITHIN ATHINAI FIR/ HELLAS UIR, AS IS CLEARLY DEPICTED IN THE ICAO AERONAUTICAL CHARTS, AND IS **THE ONLY COMPETENT THEREIN NOT LEAVING SPACE FOR MISLEADING OR MISINTERPRETATIONS.**

CONSEQUENTLY, THE REF (B) TURKISH NOTAM A3009/16 LTAAYNYX (111139 EUECYIYN JUL 2016) **HAS NO GROUND, CANNOT PRODUCE ANY INTERNATIONALLY LEGAL EFFECT** WITHIN ATHINAI FIR/ HELLAS UIR AND IS CONSIDERED NULL AND VOID.

THE ONLY VALID AND EFFECTIVE NOTAM WITHIN ATHINAI FIR/HELLAS UIR IS THE REF (A) A1495/16 LGGGYNYX ISSUED BY GREECE.

END PART 2 OF 2. 11 JUL 11:55 2016 UNTIL 14 JUL 02:30 2016.

LTBB/ISTANBUL/SEHIR-CITY A3022/16 12JUL 0740Z

- NAVIGATIONAL WARNING TO ALL CONCERNED:

THE VIEWS EXPRESSED IN TURKISH NOTAM A3009/16 REMAIN UNCHANGED AND IS VALID AND EFFECTIVE. THE GREEK NOTAM A1497/16 IS NULL AND VOID.

TURKEY ALSO WOULD LIKE TO EMPHASIZE THAT NO FURTHER EXPLANATION WILL BE GIVEN TO ANY OBJECTION RAISED TO TURKISH NOTAM A3009/16. 12 JUL 07:30 2016 UNTIL 14 JUL 02:30 2016.

LGGG/ATHINAI A1497/16 12JUL 0545Z

-

ACCORDINGLY, GREECE HAS BEEN ASSIGNED RESPONSIBILITY FOR ALL ATM SERVICES AND ICAO PURPOSES AS WELL AS FOR SAR OPERATIONS WITHIN

ATHINAI FIR/ HELLAS UIR, AS IS CLEARLY DEPICTED IN THE ICAO AERONAUTICAL CHARTS, AND IS THE ONLY COMPETENT THEREIN NOT LEAVING SPACE FOR MISLEADING OR MISINTERPRETATIONS. CONSEQUENTLY, THE REF (B) TURKISH NOTAMS A3012/16 AND A3009/16 LTAAYNYX (111250 AND 111139 EUECYIYN JUL 2016) HAVE NO GROUND, CANNOT PRODUCE ANY INTERNATIONALLY LEGAL EFFECT WITHIN ATHINAI FIR/ HELLAS UIR AND ARE CONSIDERED NULL AND VOID. THE ONLY VALID AND EFFECTIVE NOTAMS WITHIN ATHINAI FIR/HELLAS UIR ARE THE REF (A) A1495/16 AND A1496/16 LGGGYNYX ISSUED BY GREECE. 12 JUL 05:26 2016 UNTIL 14 JUL 02:30 2016.

Comms problems in the Kabul FIR

Declan Selleck
3 August, 2016



Aircraft in the eastern sections of the Kabul FIR can expect some radio issues, as a comm unit (VSAT at Ghanzi) is out of action.

Frequencies affected:

- 118.3
- 128.5
- 126.325

Airways

- M696 (between GIDOG and LAJAK)
- A453
- G206
- N644
- L750
- M875

The advice from ATC in Afghanistan is to keep trying the assigned frequency until within range of a different transmitter; in the meantime, a bit of SLOP, IFBP and TCAS should keep you out of trouble.

South Sudan off limits

Declan Selleck
3 August, 2016



The security situation in Juba, and South Sudan, has deteriorated in the last week, with HSSJ/JUB becoming off limits due to fighting.

The ceasefire announced on 11 July is holding; Juba International Airport (HSSJ/JUB) is open to charter operations; however, commercial flights have yet to resume.

U.S. government aircraft evacuated personnel on 12 July – a security message issued by the embassy later in the day advised U.S. citizens to continue to shelter in place and not attempt to travel to the airport.

Meanwhile, other countries, such as Japan, Uganda, and Germany plan to send military aircraft to evacuate their nationals.

New Zealand strike called off

Declan Selleck
3 August, 2016



A planned strike by Aviation Security across airports in New Zealand, which would have led to wide scale disruption, has been called off at the last minute.

The press release from AvSec follows:

Auckland, 6.00 pm Wednesday 13 July 2016.

New Zealand's Aviation Security Service (Avsec) has reached agreement with two unions which will prevent strike action across New Zealand next week.

Urgent top level mediation was held all day in Auckland today with representatives of the Civil Aviation Authority, Avsec and their Board working out a 'reasonable' deal with PSA and Etu union officials.

Unions will withdraw their strike action effective immediately. Avsec management will withdraw their lock out notice to enable unions to formally ratify the pay offer with their members. This should take 4 - 5 weeks.

Chairman Nigel Gould and Director of Civil Aviation Graeme Harris led the Avsec/CAA negotiation team. "We are pleased we have been able to find some common ground and hope the offer made today, which will be recommended by unions to their members, will lead to a formal settlement and in time a new collective agreement.

The traveling public can be assured we all wanted a constructive outcome and neither Avsec nor unions wanted to reach the point where strike action would cause any disruption to travellers during the school holidays. We have made a lot of progress today." Mr Harris said.

No further details or comment will be made until 11:00 am tomorrow, Thursday 14 July.

Hijack: It's dark and we're scared

Declan Selleck
3 August, 2016



Earlier today, a BAe 146 in South Africa squawked Hijack – by mistake; the rest you can imagine, and the global media are enjoying the non-story, complete with the usual file pictures of heavily laden A380's and general panic.

A very similar incident occurred in 1999 – this one never made it to the newspapers. A 747-400 belonging to one of the US majors was enroute from the US to Amsterdam, and approaching Gander VOR, typed 7500 into the box before coasting out. Around the same time, the crew sent a routine ACARS message to Dispatch, with a P.S. **"It's dark and we're scared"**.

That was just a funny, unrelated, quip, and the 7500 was an inadvertent error – but the two combined set off a full scale alert on two continents.

Because of the time lag between coasting out, and coasting in to the north of Ireland, where VHF comms were re-established, ATC and Company had to figure out ways to find out whether this was a real event, or not – it certainly seemed to be.

By the time the aircraft reached Amsterdam, the airport was fully prepared for a huge hijacking event – and the aircraft was directed to an off-airport parking position, surrounded and eventually boarded in sequence by every government organisation imaginable.

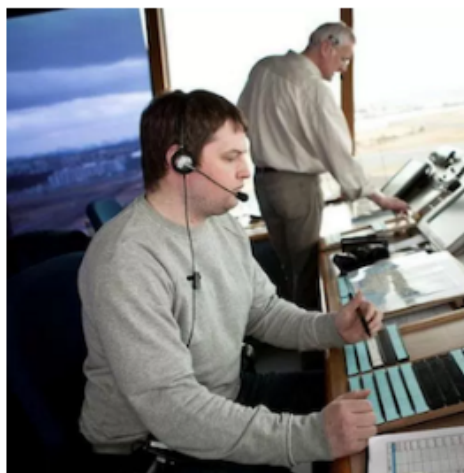
This article contains restricted content ... full article available to OpsGroup members.

Midweek Briefing 06JUL: Hong Kong capacity problems, Iceland: The fun continues

Cynthia Claros
3 August, 2016

**INTERNATIONAL
BULLETIN**

ISSUED BY FLIGHT SERVICE BUREAU
SITA HNLFSXH AKLFSXH AFTN KMCOXAAL
EMAIL INTL.DESK@FSBUREAU.ORG



Hong Kong capacity problems 06JUL During this year, the Hong Kong CAA has issued a couple of warnings to operators to stick carefully to their allocated slots, but it's not making much of a difference to operations there. Read the article.

Iceland: The fun continues 06JUL Last week there were some really positive indications that the ATC strike in Iceland was coming to an end, but it's now worse than ever, with Westbound, Eastbound, and landing traffic all affected. Read the article.

HECC/Cairo FIR A restriction exists for traffic to and from the Amman FIR, so if overflying Jordan and then Egypt, or vice versa, you can only use the waypoint METSA.

OMAE/Emirates FIR has some updated peak times. Departures need a slot between 0630-0730Z and 1700-0000Z. Arrivals will be spaced 5 mins apart during these times also, as will aircraft entering the OMAE FIR from nearby airports like Muscat, Isa, and Baghdad.

EIDW/Dublin Runway 10/28 is closed overnight until 09JUL.

OERK/Riyadh, Saudi Arabia will be hosting the 'Global Ministerial Aviation Summit' 29AUG-31AUG. 55 different ministers from various countries are expected to be in attendance. Be aware of potential restrictions leading up to and after the event.

CYFB/Iqaluit Another NAT alternate favourite, CYFB has some runway closures throughout July.

EGCC/Manchester is doing some work on 05L/23R overnight until 08JUL and has advised operators to

carry some extra gas due possibility of holding.

LOWW/Vienna has published a helpful list of rush hour periods – worth avoiding these times as holding is common at VIE. The times are: 0530-0750, 0920-1030, 1140-1240, 1340-1500, 1615-1800, and 1840-1940Z.

BIZZ/Iceland Despite optimistic reports of a resolution to the ATC dispute in Iceland last week, the situation remains unresolved. Last night BIRD Oceanic was closed to most Eastbound traffic once again, as was BIKF. A new addition to restrictions is a closure to many Westbound flights on Wednesday 06JUL – “DUE TO STAFF SHORTAGE IN REYKJAVIK OACC WESTBOUND TFC PLANNING TO ENTER BIRD FROM ENSV VIA GUNPA, VALDI, IPTON, INGAL, ISVIG AND EGPX VIA LIRKI, GONUT, OLKER, MATIK AND RATSU AND THEN PROCEEDING INTO EGGX OR CZQX SHALL REMAIN SOUTH OF BIRD CTA” Read the article.

EDYY/Maastricht ATC have requested crews operating through the Maastricht UIR to log on to CPDLC EDYY, if you have datalink. While voice remains the primary comms method, you might get an uplink message if the frequency is busy – it’s not a test, you should confirm – most of these uplinks are likely to be frequency changes.

EPZZ/Poland has advised operators to check carefully whether permission is required in advance of operations at airports other than EPWW/Warsaw. Many countries including Poland have reinstated Border Controls within the Schengen zone. Best advice is to treat each country as having full Border Controls for the moment (so think Passport, GenDec, etc.)

SPIM/Lima FIR (Note that the airport is now SPJC, distinct from the FIR code) is shutting down airway UG427 after 21JUL.

SUEO/Montevideo ACC (Uruguay) has some comms issues in it’s airspace, and has advised of some extreme spacing between aircraft irrespective of FL – 40nm. For now, this ends today (06JUL) but may happen again.

WSZZ/Singapore Qualifying citizens of Singapore are now eligible to apply for US Global Entry membership – and benefit from expedited entry to the United States at designated airports. Similarly, qualified U.S. citizens are eligible for enrolment in Singapore’s enhanced-Immigration Automated Clearance System (eIACS).

ZMUB/Ulaanbaatar, Mongolia is downgraded to RFF Cat 7 until 10JUL. Also, from 12-16JUL, you can’t file this as an alternate which may limit your options somewhat.

LFPG/Paris due to maintenance on the ILS for Runway 08L/26R from 18JUL to 02OCT. The only approaches that will be available will be RNAV based procedures (LNAV/VNAV, LPV, LNAV) and VOR/DME.

GQNN/Nouakchott, Mauritania has moved to a new international airport this June. Located approximately 10nm north of the city, it has an annual passenger capacity of 2 million. Infrastructure from the capital’s old airport was transported to the new one.

SECU/Cuenca Following the landing incident on 28APR of an E190, all inbound flights will be reportedly be held if the runway is wet – until end of August.

LFMH/St Etienne Fuel outage on 07JUL, 0800-1100 UTC.

Canada/Mexico From 01DEC2016, Mexican nationals will be able to travel to Canada without a visa for business and tourism for up to 90 days.

Turkey/Russia Russia has lifted the travel restrictions on tourists between the two countries. The ban was put in place following the downing of a Russian military aircraft last year.

Bangladesh Germany, Australia and the U.K. have banned direct cargo flights from Bangladesh due to security concerns.

Israel/China The Israeli parliament has ratified a multiple-entry visa agreement with China, under which Chinese business visitors and tourists can enter Israel multiple times with the same ten-year visa and vice versa.

EZZZ/Europe the European Union updated **Air Safety list** (aka the Airline Blacklist) on 17JUN, and lifted a ban on Zambian air carriers.

Uganda Introduction of 'e-visa' system. You must show a valid yellow fever vaccination certificate on arrival.

ZJSA/Sanya FIR, China has an ADS-B trial up and running on L642 and M771. Radar is still the primary separation tool, but ATC ask that you check your Flight ID matches your FPL.

View the full International Bulletin 06JUL2016

Hong Kong capacity problems

Cynthia Claros

3 August, 2016



During this year, the Hong Kong CAA has issued a couple of warnings to operators to stick carefully to their allocated slots, but it's not making much of a difference to operations there. We have this report from a reader, who says:

- The slot allocation is troublesome. If you're lucky, you will obtain a slot within a day or so, but it is unlikely to be for the time that you want.
- Weekends are busier times and slot requests are often denied, making operations difficult.

- The parking allocation in front of the BAC ramp changed as well, making it more limiting – they established a 3m separation rule.
- Outlying positions allow for Pax services, but you still require push back and there are only 2 spots from where you can depart.
- HKBAC is obtaining their own approval now for towing.

If you have any experiences to share, let us know.

Iceland ATC strike bigger than ever

Declan Selleck
3 August, 2016



We had some really positive hints at a resolution of the Iceland ATC strike last week, but it's not over yet – by any measure. Today sees another long list of airspace and airport closures. Oceanic Eastbound, Westbound and landing traffic all affected.

BIKF/KEFLAVIK A0454/16 06JUL 1007Z

(NOTAMR A0453/16) – DUE TO STAFF SHORTAGE BIKF TWR SERVICE LIMITED TO SCHEDULED COMMERCIAL AND INTERNATIONAL FLIGHTS, AMBULANCE AND EMERGENCY FLIGHTS. NO TOUCH AND GOES OR LOW APPROACHES FOR VFR TRAINING FLIGHTS, ONLY DEPARTURE AND ARRIVAL. TWR BIKF SERVICE LIMITED TO AMBULANCE AND EMERGENCY FLIGHTS ONLY DURING THE FOLLOWING HOURS: 09:00-09:30, 11:30-12:00 AND 14:00-14:30. 06 JUL 10:05 2016 UNTIL 06JUL 21:00 2016.

BIRD/REYKJAVIK OACC A0452/16 05JUL 2146Z

(NOTAMR A0451/16) - DUE TO STAFF SHORTAGE IN REYKJAVIK OACC WESTBOUND
TFC PLANNING TO ENTER BIRD FROM ENSV VIA GUNPA,
VALDI, IPTON, INGAL, ISVIG AND EGPX VIA LIRKI, GONUT,
OLKER, MATIK AND RATSU AND THEN PROCEEDING INTO EGGX
OR CZQX SHALL REMAIN SOUTH OF BIRD CTA. 06 JUL 11:00 2016 UNTIL 06 JUL 20:00 2016.

BIRD/REYKJAVIK A0450/16 05JUL 1518Z

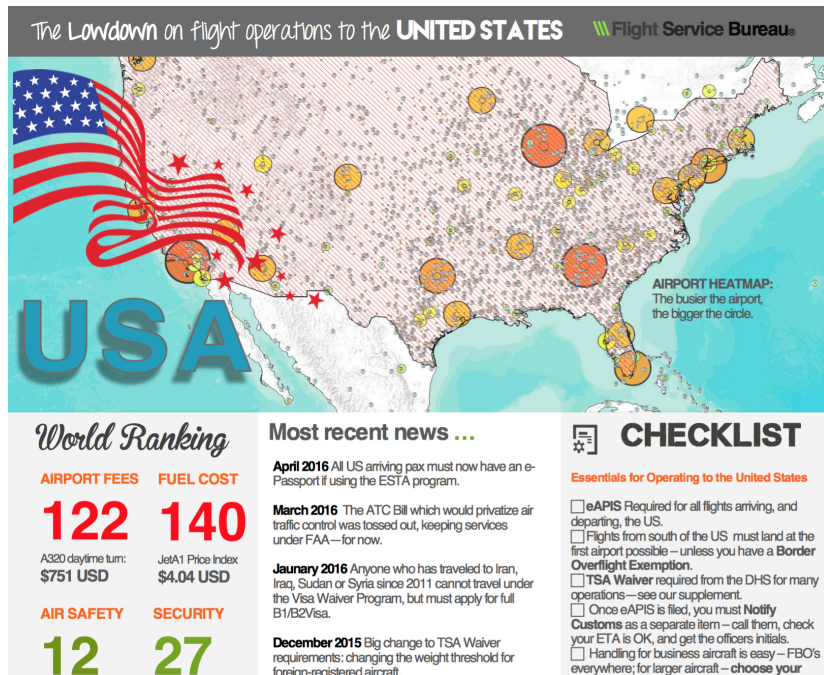
- DUE TO STAFF SHORTAGE IN REYKJAVIK CENTRE,
OPERATORS SHALL FILE TO COMPLY WITH THE FOLLOWING:
1. EASTBOUND TFC WILL NOT BE ACCEPTED FROM CZQX AND
EGGX EXCEPT TRAFFIC WITH DESTINATION IN ICELAND,
SCANDINAVIA, BALTIC STATES AND RUSSIA.
2. EASTBOUND TRAFFIC FROM AERODROMES EAST OF 105W
WITH DESTINATIONS IN THE MIDDLE EAST SHALL REMAIN CLEAR OF
BIRD CTA.
OPERATORS ARE URGED TO KEEP REQUESTS FOR LEVEL AND
SPEED AMENDMENTS WITHIN BIRD CTA TO A MINIMUM.
FOR FURTHER INFORMATION CALL REYKJAVIK SHIFT
MANAGER +354 424 4141. 06 JUL 02:00 2016 UNTIL 06 JUL 08:00 2016.

BIRD/REYKJAVIK A0452/16 05JUL 2146Z

(NOTAMR A0451/16) - DUE TO STAFF SHORTAGE IN REYKJAVIK OACC WESTBOUND
TFC PLANNING TO ENTER BIRD FROM ENSV VIA GUNPA,
VALDI, IPTON, INGAL, ISVIG AND EGPX VIA LIRKI, GONUT,
OLKER, MATIK AND RATSU AND THEN PROCEEDING INTO EGGX
OR CZQX SHALL REMAIN SOUTH OF BIRD CTA. 06 JUL 11:00 2016 UNTIL 06 JUL 20:00 2016.

USA - the Lowdown on Flight Ops

Declan Selleck
3 August, 2016



We just published our latest **Lowdown** – this one is for the USA. Heaps of good information on eAPIS, new TSA Waiver rules, Border Overflight Exemption, Customs Notifications, Importation, Special Route Clearances, ESTA, Visas, and Special Flight Authorizations.

You can get these Lowdowns by joining **OPSGROUP** – you can get a single or team membership. If you'd like the US Lowdown, we'll gladly send a copy your way, just email us.

Berlin's Air Corridors - still alive?

Mark Zee
3 August, 2016

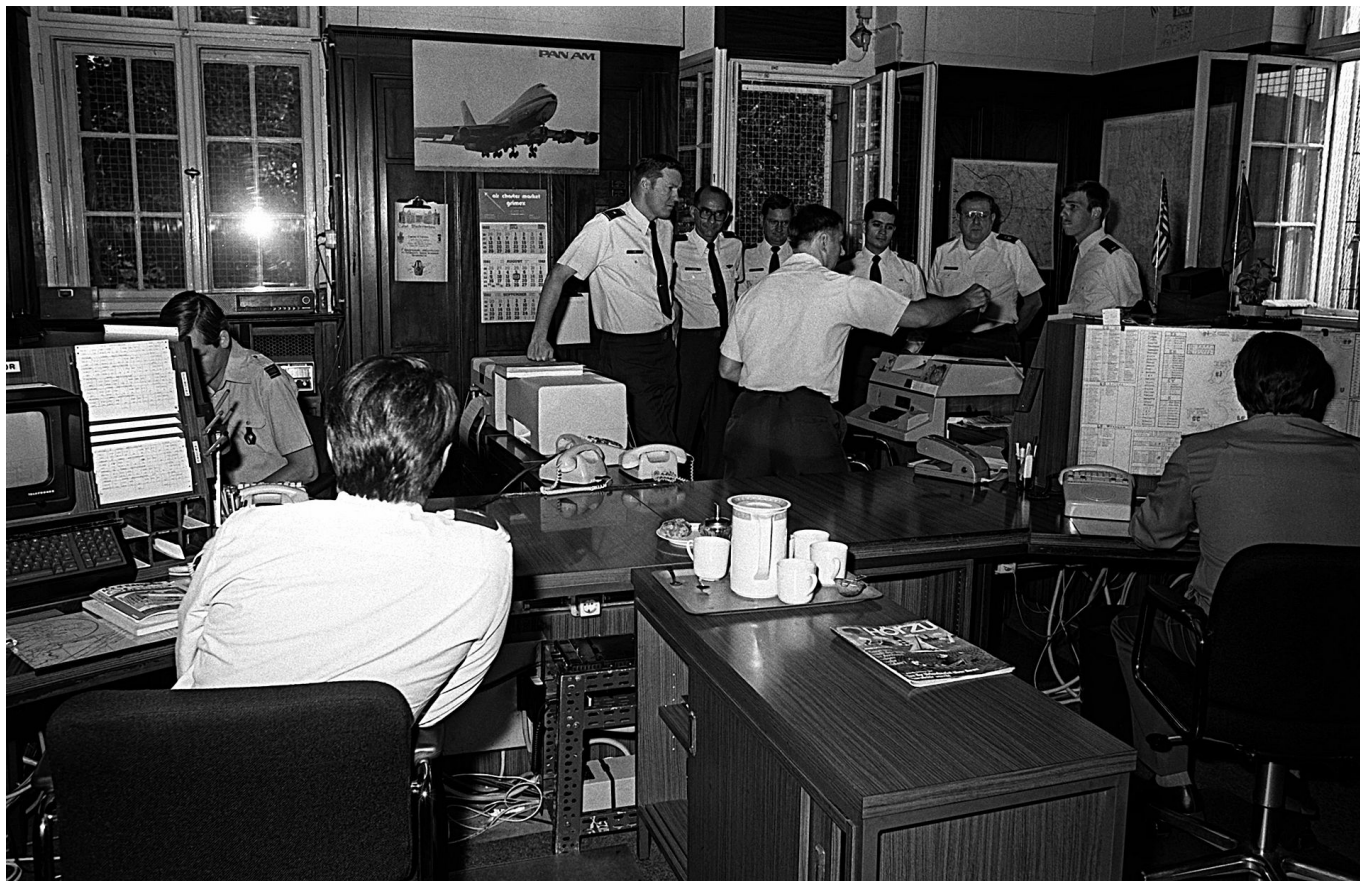


It's a generation ago, and the airway chart landscape is unrecognisable today. For 40 years however, there were only three tiny corridors that allowed a flight into East Germany. In terms of International Procedures, this was one that you really didn't want to get wrong.

Looking back, it's fascinating to see the restrictions that were placed on international operators flying into Germany. The warnings are printed in bold. **Aircraft will be fired upon.** And that threat from the Soviet Union was real – most of us recall the shooting down of Korean 007 in the Sea of Japan in 1983 – and, lesser known, another Korean flight – Korean 902 – over Murmansk in 1978.

Assuming you kept to centreline, the Soviet authorities limited overflight to FL95, and if there was an aircraft in front of you, even a turboprop, you slowed down to follow; no overtaking was allowed.

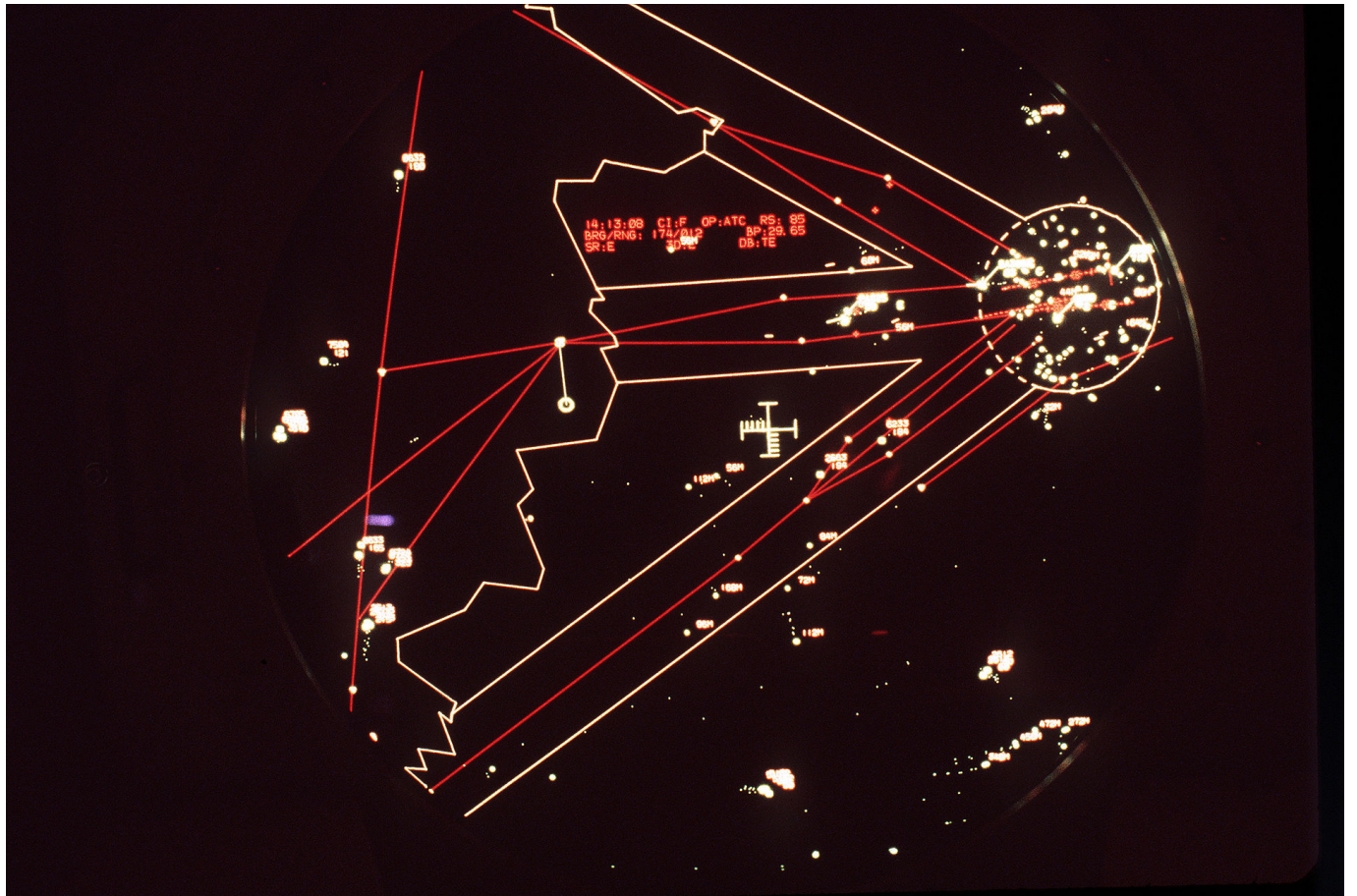
In practice, therefore, the centre corridor was the most used, because it was the shortest and limited the time restricted to FL95. Traffic was controlled by the Berlin Air Route Traffic Control Centre (BARTCC), and monitored by these guys at the Berlin Air Safety Centre – who issued the overflight permits required.



A request for an overflight permit for East Germany resulted in one of three outcomes:

- Permission Granted, **Safety of Flight Guaranteed**
- Permission Granted, **Safety of Flight Not Guaranteed**
- **Permission Denied**

Radar coverage from the Berlin ATC Centre is shown below. In 1952, an Air France flight from Frankfurt to Berlin, operated by a DC-4 came under sustained attack from two Soviet MiG 15 fighters while passing through one of the corridors. The attack damaged the aircraft severely, and the PIC made an emergency landing at Tempelhof with two engines shut down. The Soviet military authorities claimed the Air France plane was outside the air corridor at the time of attack.



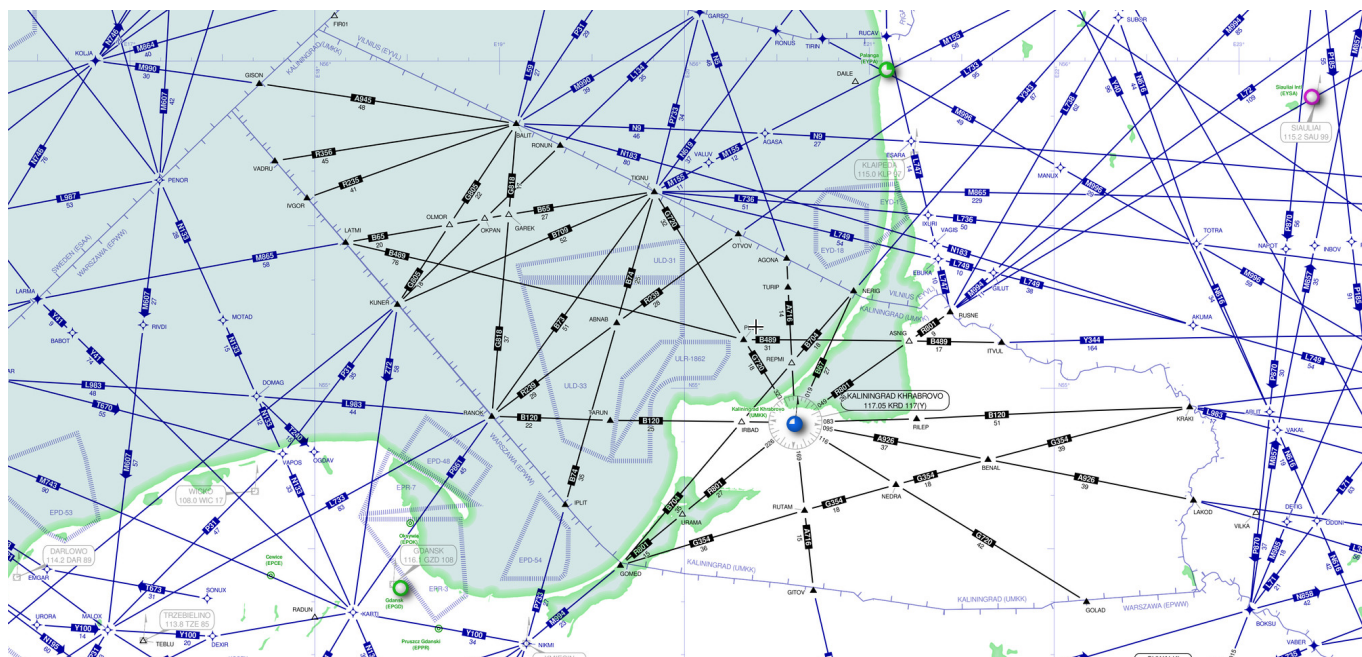
This chart from our own archives shows the Airways structure in 1970.



And so to today. Long forgotten restrictions of the past, right? Well, not really. We only have to look a little further north-east, about 500km - and we find the **Kaliningrad FIR** - in some respects an ongoing relic from the Cold War.



It sits neatly into the Eurocontrol Upper Airspace Map, but in practice, it doesn't fit into the European ATC picture quite so comfortably. If you squint closely at the skyvector chart for the area, you'll see that the airways in the Kaliningrad FIR are black – and everywhere else is blue.



This is because, first of all, **prior permission is required from Russia** to overfly the FIR, as Kaliningrad – until 1945 part of Germany – is an “Oblast” of the Russian Federation. This permission must be obtained from Moscow at least 72 hours prior to flight using Form N, and on approval, is valid for 48 hours.

Looking more closely, you'll see that there aren't a lot of useful routes – and they don't line up with the rest of the system. Few airlines, and even fewer private flights, operate through this airspace. Your most likely route north-south will take you to BOKSU – squeezed in between Kaliningrad and Belarus – not as restrictive, but still requiring prior permission.

Similarities between Kaliningrad and Berlin end there, but there are enough to be of interest to the international operator.

Midweek Briefing 29JUN: Santa Maria Oceanic Strike, US Entry Requirements

Cynthia Claros
3 August, 2016

INTERNATIONAL BULLETIN

ISSUED BY FLIGHT SERVICE BUREAU

SITA HNLFSXH AKLFSXH AFTN KMCOXAAL
EMAIL INTL.DESK@FSBUREAU.ORG



Santa Maria Strike: Four Routes 29JUN Santa Maria Oceanic has published four special routes for use during the upcoming **"July Friday Strike Series"** ATC Industrial Action. Read the article and then Summer of Strikes.

New US Entry Requirements 29JUN The US has updated entry processing through ESTA (the online visa system for countries using the Visa Waiver Program). Read the article.

LTBA/Istanbul has reopened to traffic after a terrorist attack on 28JUN. 40 people were killed in a series of explosions and gunfire at the International terminal on Tuesday evening.

UMZZ/Belarus will undergo a re-evaluation of its currency and banks will be closed to the public between 30JUN and 01JUL, if operating to Minsk you should ensure you have sufficient cash available for those days.

EGZZ/UK Much has been written about Britain's departure from Europe this week (and we're talking Brexit, not football), but if you're having trouble figuring out how this will affect you as an operator, that might be because it won't. Read the article.

LGZZ/Greek Islands Now that summer is here in Europe, the annual capacity challenge at Greek Islands is most acute on weekends, expect healthy slot delays if operating to LGIR (Iraklion) LGKP (Karthos) LGMK (Mikonos) LGZA (Zakinthos) LGSR (Santorini) LGSK (Skiathos) or LGSA (Chania).

VHHH/Hong Kong The CAD issued a reminder to operators this week that the airport is under strain, and slots issued must be strictly adhered to. It would seem that the Slot Adherence procedure issued earlier in the year isn't really working. Any local operators have feedback? Let us know.

EFRO/Rovaniemi has no Jet A1 available from until July.

LPPS/Porto Santo is also out of Jet A1 until 01JUL.

DAAA/Algeria New fax/phone number for the ACC (Area Control) in Algiers: **+213 (0)21 67 49 27** until 23JUL.

AYZZ/Papua New Guinea Reports of civil unrest, student demonstrations across Papua New Guinea started in May 2016 and are ongoing. There have been violent clashes between students, other groups and the police in Port Moresby, Lae and the Highlands.

PWAK/Wake Island has advised its High Loader is out of action until later in the year, so for large aircraft like B767 upwards, no offload capability exists for cargo.

EGZZ/Scotland (Will we need a new ICAO code soon?) Glasgow ATC – at both EGPK and EGPF – has sporadic closures overnight at present due to staffing issues. Keep an eye on Notams.

WAAF/Ujung Pandang has some radar outages affecting high-level overflights, optimum levels may not be available.

LPPO/Santa Maria Oceanic has published four special routes for use during the upcoming “July Friday Strike Series” ATC Industrial Action. The Strike Time Period is : 0700-0900Z, during which time only these four routes will be accepted. -ROUTE A- 45N020W 40N030W 37N040W -ROUTE B- DETOX 39N020W 36N030W 34N040W -ROUTE C- LUTAK 36N020W 33N030W 29N040W -ROUTE D- ULTEM 27N040W

LIZZ/Italy We have been notified of possible ATC industrial action on 23JUL which was previously scheduled on 05JUL. Details and participation of relevant ACCs are as follows: National strike (ACCs and airports) 0800-1600 UTC. Local strike at LIRA – Ciampino 0800-1600 UTC.

VCBI/Colombo, Sri Lanka There was industrial action yesterday, 28JUN, by Immigration Officials, which may continue. Flight delays possible.

LEZZ/Spain There was a strike threatened by Apron Controllers at LEMD/Madrid but that was cancelled on Monday.

LPZZ/Portugal The seven unions of NAV Portugal sent a pre-notice for an industrial action for ATC and non-ATC personnel, during two hours daily on: 30JUN and 8/15/22/29JUL.

KATL/Atlanta Upgrades on the airport have officially started, which will include a new runway, concourse and hotel.

View the full International Bulletin 29JUN2016

US Entry requirements updated

Declan Selleck
3 August, 2016



The US has updated entry processing through ESTA (the **online visa system** for countries using the Visa Waiver Program).

The system now reflects the designation of Somalia, Libya and Yemen as countries of concern, a change made under the Visa Waiver Program Improvement and Terrorist Travel Prevention Act of 2015.

In addition to the country-specific travel restrictions, a request for ESTA applicants' Global Entry Program Numbers was also added.

The Visa Waiver Program allows foreign nationals from designated countries to enter the United States for business or tourism for up to 90 days without the need to obtain a B-1/B-2 visitor visa from a U.S. consulate. VWP travellers must register and obtain approval to travel from the ESTA and carry an e-passport.

Santa Maria Strike: Four Routes

Declan Selleck
3 August, 2016



Update: 1730Z/Weds - we have received notification that Portuguese Industrial action may be being withdrawn. We will update and confirm when certain.

LPPO/Santa Maria Oceanic has published four special routes for use during the upcoming "July Friday Strike Series" ATC Industrial Action.

If you happen to be crossing the LPPO FIR on a Friday morning in July, then expect a hefty reroute if you didn't file per the plan.

The Strike Time Period is : 0700-0900Z, during which time only these four routes will be accepted.

-ROUTE A- 45N020W 40N030W 37N040W

-ROUTE B- DETOX 39N020W 36N030W 34N040W

-ROUTE C- LUTAK 36N020W 33N030W 29N040W

-ROUTE D- ULTEM 27N040W

The cutoff time for these routes is when you enter the LPPO/Santa Maria FIR

Traffic entering prior to 0700Z: unrestricted

Traffic entering the FIR between 0700-0900Z: Must file and fly one of the four Routes above.

Traffic entering the FIR after 0900Z: unrestricted

Summer of ATC Strikes: This weeks update

Declan Selleck
3 August, 2016



European Air Traffic Controllers are striking in a fight against changes emanating from labour reform and the Single European Sky initiative. Curiously, Greece – normally a big fan of ATC strikes during the summer – has remained off the radar.

Here's the latest, and it's a growing list:

France

- Ongoing ATC Strikes – the latest ended on 06JUL at 0400Z. Nothing else on the horizon – for now.
- French overseas territories are also included in these strikes – so Tahiti, New Caledonia, Martinique, Guadeloupe have all joined in the action when it takes place.

Italy

- Strike announced for 23JUL, affecting Area Control Centre's and Airports in Italy. Normally Italian strikes permit overflying traffic without restriction.

Iceland

- Ongoing sporadic strike action affecting BIKF, BIRK airports, and BIRD Oceanic FIR. Occasional entire closures of the airspace except for Emergency and scheduled flights. Eastbound Traffic from the US/Canada to Europe not accepted during these closures unless destination is in Scandinavia, the Baltics, or Russia.
- Since first week of July, westbound traffic is also not accepted in BIRD during strike periods. Check BIRD Notams.

Portugal

- Strikes announced for **every Friday in July** were cancelled last week

We'll keep this page updated as we get updates.

Midweek Briefing 22JUN: Iceland ATC strike - end in sight, Israel FPL changes

Cynthia Claros
3 August, 2016

**INTERNATIONAL
BULLETIN**

ISSUED BY FLIGHT SERVICE BUREAU
SITA HNLFSXH AKLFSXH AFTN KMCOXAAL
EMAIL INTL.DESK@FSBUREAU.ORG



Iceland ATC strike - end in sight 22JUN Operators on both sides of the Atlantic have been frustrated over the last 6 weeks with continual sporadic ATC Industrial action. And end may be in sight, but in the meantime keep a close eye on BIRK, BIKF and BIRD Notams. Read the article.

FPL changes: Israel 22JUN Current Flight Planning procedures for flights across Europe from Israel will change in light of a new agreement signed between Israel and Eurocontrol. Read the article.

LFZZ/France ATC Strike Number 9 gets underway today until 24JUN at 0400Z, usual disruption and restrictions apply. Avoid France where possible. NOTAM F1171/16 refers.

EGGX/Shanwick is having an 80's party on the 28th of June at 1600Z. For engineering work, all the new technology is being taken offline for three hours, so no CPDLC, ADS-C or OCL. Instead we have Voice Reports, HF, Manual Clearance Requests (123.95 or 127.65), and so on; just like the good old days. When you hit 30W log on to Gander manually.

UMZZ/Belarus The Minsk FIR has updated its table of cruising levels and altitudes below Transition; view the AIC.

Gambia The UK FCO issued updated travel advice for The Gambia : "Demonstrations took place in April and May 2016 in Banjul. Demonstrations could occur at any time in any part of the country prior to presidential elections planned for 01DEC. You should be vigilant, avoid all demonstrations"

LPZZ/Portugal is joining the International ATC Strike Club and will begin with industrial action, for two hours daily on: June 30th, and July 8th,15th, 22nd and 29th.

KCXO/Houston Regional will be opening a new customs facility mid July. KCXO serves the Metro-Houston

area and is 46 miles outside of town. The new CBP facility adds more choice to international operators over the already saturated Houston area airports.

KZZZ/United States The U.S. Navy has scrubbed the planned military GPS interference testing across the U.S. Southwest that was supposed to happen this month.

LWSS/Skopje is implementing Free Route Airspace in the Skopje ACC above FL245, effective 23JUN. FRA is available H24 with DCT limit unlimited. The ATS network above FL245 is withdrawn. Additional info is available in the Republic of Macedonia AIP AMD 58/16. New RAD measures can be found in the increment file and will become part of Annex 4 on AIRAC 1608.

LWZZ/Macedonia Late on 20JUN, tens of thousands of anti-government protesters gathered in central Skopje, Macedonia's capital, to conduct another demonstration. The protesters gathered outside the Special Prosecution building before then marching to the Ministry of Justice building, where they broke some of its windows and threw red paint at its exterior.

EZZZ/Scandinavia Another Free Route Airspace update is happening in the two Functional Airspace Blocks NEFAB and DK/SE FAB. NEFRA Phase 1 will be implemented as of AIRAC 1607 on 23JUN, to implement H24 cross border Free Route Airspace between DK-SE FAB and NEFAB, except Norway, above FL285. ATS routes will be kept. Norway plans to implement cross-border Free Route Airspace spring 2017.

CYZZ/Canada has introduced "No Drone Zones" around airports that includes fines for offenders caught operating drones in the restricted areas. They are also drafting new legislation to strengthen rules regarding drone operations.

LEMD/Madrid may have industrial action on 28JUN, the Apron controllers are making noises about a strike. Not confirmed.

WAZZ/Indonesia FIR Ujung Pandang FIR has a couple of radar outages from 19-27JUN. Reroutes or delays are not likely, but strong potential for lower than optimum Flight Levels.

HECC/Cairo FIR If for some reason you are operating flights to or from Libya, then **A:** You're probably not reading this bulletin carefully enough, and **B:** Be aware that you are required to obtain PPR from Egypt via AFTN to HECAYNYX, at least 48 hours before the flight, in order to overfly Cairo FIR.

EGAA/Belfast ILS 25 out of service along with other ongoing runway and taxiway closures until 11AUG16. Please check EGAA NOTAM's for specific closures.

EGLF/Farnborough Temporary restricted airspace will be in effect for the annual Farnborough Airshow 16-17JUL. AIC M 033/2016.

France The French authorities have extended the document checks at their borders, these measures will apply to all airports in France and also to Basel airport. Especially during the period of the European Football Championships, passengers travelling to/ from French airports are asked to ensure they have a valid identity document (passport or identity card) with them whilst travelling. A drivers license is not an acceptable document.

VTBB/Bangkok FIR Monsoon season runs July-September. Big potential for holding and airport closures in the region, taking extra fuel is recommended.

OEZZ/Saudi Arabia FIR is introducing new Navigation Charges on 01JUL. All the maths is here.

LSZA/Lugano will close 10-19OCT due to heavy maintenance work on the main runway. No traffic will be able to operate. The airport operator has said 20OCT should be the reopening day but risk that this may be extended.

WMZZ/Malaysia Following a directive by the Malaysian Immigration Department, all foreign nationals travelling on all domestic flights will be required to produce passports upon passing through Immigration control, effective immediately.

Azerbaijan An online e-visa issuing system, called ASAN Visa, will be established that should streamline the visa application process. Eligible foreign nationals will be able to obtain supporting documents, submit their visa applications and receive an e-visa within three days of submission through the portal. The list of eligible nationals is expected to be available soon on the Foreign Ministry website.

EGPK/Prestwick has ongoing overnight closures due to ATC staffing problems, keep an eye on NOTAMs.

EIDW/Dublin will closed for 15 minutes at 1500Z on 23JUN due to a VIP departure.

NWWW/New Caledonia The South Pacific is not exempt from ATC strikes either; overnight closure of the NWWW airspace means no enroute traffic accepted in the FIR tonight – and sporadically ongoing. Note that the Fire Service also has reduced RFF category at specific times. Check Notams.

SKED/Bogota FIR NOTAM of the month award: Colombia Notam A1947 issued on 17JUN. Be aware of the potential for your Cabin Crew to request a change to the SID from ATC, unbeknownst to you. In full: “CHANGES TO STANDAR (sic) INSTRUMENT DEPARTURE (SID) COULD BE DONE BY RADIOTELEPHONY BETWEEN CABIN CREW AND THE CORRESPONDING ATS DEPARTMENT WHILE COMMUNICATION INTERCHANGE, IN ACCORDANCE WITH AERODROME OPERATIONS REF. AIP ENR 1.10”.

We actually have no idea what they mean. Let us know, and keep an eye out for those sneaky flight attendants.

LEPA/Palma has a bunch of outages, and runway and taxiway closures at present that will create restrictions and delays. Take a close look at your arrival and dep times before operating.

Suriname Immunisation checks for Yellow Fever are being carried out throughout June at all border check points, ports and international airports in Suriname; make sure you have a valid yellow fever certificate if required.

RJZZ/Japan On 22JUN heavy rains caused building damage and fatalities in southwestern Japan. At least six people died, as a result of the rain and mudslides across the island of Kyushu. Emergency personnel evacuated several hundred people due to the threat of further mudslides.

Uzbekistan has increased security due to a major summit, from 23-34JUN which may result in changes to flight departures and lengthy check in and security clearance at airports across the country.

View the full International Bulletin 22JUN2016