

# Australian Airport Strike cancelled

Mark Zee

22 March, 2016



**Announced this morning, Wednesday 23MAR:** Australia had been set up for a week of Airport Chaos over the Easter Break, with Border Protection and other government services planning a huge list of strikes – but the events in Belgium yesterday prompted a cancellation of the strike.

Some airport staff have already been engaged in stop work action at airports in Cairns, Townsville, Perth, Darwin and Adelaide as part of the two-year battle over pay and conditions.

Bigger disruptions were anticipated tomorrow when staff at major international airports in Sydney, Melbourne and Brisbane were going to mount a 24-hour strike starting at midnight.

Earlier today Prime Minister Malcolm Turnbull urged the Community and Public Sector Union to reconsider, following the attacks in Brussels. The union has now confirmed it has instructed staff not to strike, and attend work as normal.

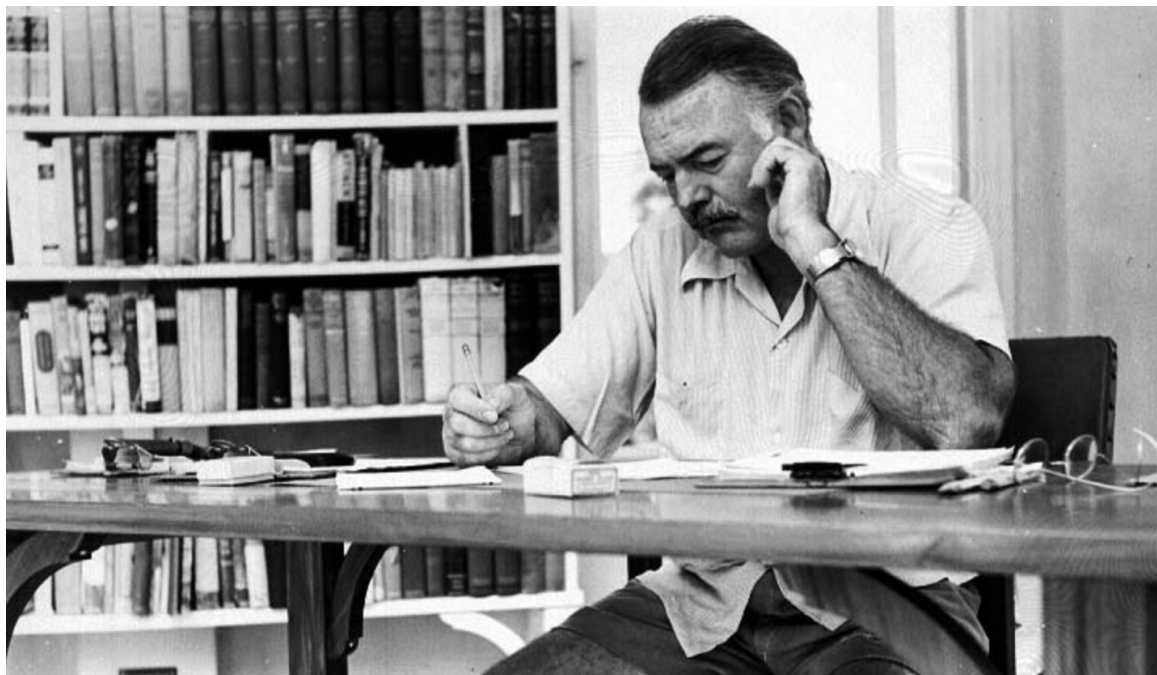
According to a statement, National Secretary Nadine Flood said the decision was made after the Prime Minister's comments. Earlier Mr Turnbull told Channel 7 he had been assured that there would be adequate security at the airports, but he pressured the union to retract its plans.

---

## Join our writing team!

Mark Zee

22 March, 2016



Your interest in **International Flight Ops** is likely as strong as ours, and much as we want to keep you informed and engaged on the most relevant changes and topics – it's sometimes hard! So, we thought we'd add a couple of guest writers to our blog.

Do you want to join in? It's pretty easy – you'll get a login and can create your own articles that will be published to our blog readers.

- You get a login to our blog site (25,000 readers)
- Write an article about an International Ops topic that you genuinely care about or are strongly interested in
- Add in the most relevant links and photos, and you're done!

Keen? Email us at [bulletin@fsbureau.org](mailto:bulletin@fsbureau.org)

---

## Midweek Briefing: High Seas Airspace, Canada New Entry Rules

Cynthia Claros  
22 March, 2016



**High Seas Airspace - near misses** 16MAR The Baltic Sea (Scandinavia) is seeing an alarming rise in traffic proximity events, and ICAO has issued guidance to operators with background and information. Military flights operating under 'due regard' are, well - not. **Read the full article** about High Seas airspace.

**Canada New Entry Rules - relaxed** 16MAR The new Canada Entry Rules - requiring most visitors to have an eTA before departing - came into force yesterday; with a caveat. In short: you should have one, but it's OK if you don't - at least until September 2016. **Read the full article.**

---

**Cxxx/Canada** The new Canada Entry Rules - requiring most visitors to have an eTA before departing - came into force on 15MAR; with a caveat. In short: you should have one, but it's OK if you don't - at least until September 2016. Read the full article.

**Cxxx/Canada** Effective 30MAR, Canadian rules will no longer require an approach completely independent of GNSS at the planned destination. However, where a GNSS approach is planned at both the destination and the alternate, the aerodromes will need to be separated by a minimum of 100 NM. Refer AIC5/16.

**Baltic Sea** Based on several concrete examples of missing flight plans, the Russian Federation, Finland and Estonia agreed to define 7 new waypoints for State aircraft operations over the High Seas that could be used, to replace the current string of LAT/LONG coordinates, to facilitate all future FPLs between St. Petersburg FIR and Kaliningrad FIR. The ICAO Secretariat assigned the following 5LNCs: PISIS-PIDINPISIM-PIRUX-PINIX-PIVAX-PIPOM. All involved States (Russian Federation, Estonia, Finland and Latvia) agreed to implement/publish these waypoints (all over the High Seas), for the 30 MAR 2016 AIRAC date. Read the High Seas Airspace article.

**North Atlantic** CPDLC and ADS-C services will be out of service in Gander, Shanwick, Shannon and Reykjavik FIRS on 21MAR for periods lasting no longer than a few hours due to Inmarsat satellite replacement work. Please check the FIR NOTAM's that pertain to your operation that day.

**Kxxx/United States** Due to a missile launch from within Miami Airspace the FAA has issued NOTAM

A0366/16 to advise of the potential impact to operations with KZMA, KZWY and TJSJ FIRs from March 16 to March 17th. Please check the NOTAM for full details on all the possible routing constraints.

**LTXX/Turkey** NATO has begun surveillance within the Turkish FIR as part of assurance measures for Turkey. The first duty period was 12-15MAR.

**Time Changes** Clocks go forward/back depending on whether you've just had a long winter or a long summer. The US changed on 13MAR, most of Europe is on 27MAR, Australia and NZ on 03APR. TimeandDate.com has a very useful list.

**KTEB/Teterboro** A new Charted Quiet Visual Runway 19 visual approach will be published on 31MAR. Starting 04APR, the FAA will test the procedure for 180 days to gauge pilot compliance and environmental impact to determine if the procedure will become permanent.

**YMML/Melbourne** will host the Formula 1 Grand Prix 17-20MAR, with additional traffic to both YMML and YMEN/Essendon during these dates.

**KATL/Atlanta** Officials in Atlanta are laying the groundwork for an expansion of the world's busiest airport. Work will begin soon on a \$6 billion expansion and renovation project at Hartsfield-Jackson Atlanta International Airport. Workers will update the domestic passenger terminal and concourses, and add a sixth runway and a hotel. Work begins on concourse renovations later this year.

**Lxxx/Austria has** issued AIC 4/16 outlining the near future use of more direct Free Route Airspace.

**Oxxx/Iran** The U.S. State Dept issued a Travel Warning to reiterate and highlight the risk of arrest and detention of U.S. citizens, particularly dual national Iranian-Americans, in Iran, and to note that FAA has advised U.S. civil aviation to exercise caution when flying into, out of, within, or over the airspace over Iran.

**NVVV/Port Vila** Runway 11/29 will be closed from 16MAR at 1300Z until 17MAR at 1930Z for maintenance. This essentially closes the airport during the time period.

**Yxxx/Australia** A reminder that Easter travel could be severely disrupted with Border Force and Immigration staff at international airports across Australia planning to take strike action on the eve of Good Friday.

**UIBB/Bratsk** Don't go. No fuel. Until 31MAR.

View the full International Bulletin 16MAR2016

---

## High Seas Airspace - What is it?

Mark Zee  
22 March, 2016





**Austria might have the worlds most perfect little piece of airspace.** Wien (Vienna) FIR matches the countries' political boundaries perfectly. There is no ocean, no disputed boundaries, and no delegation of ATC.



For most others, it's not as straightforward. For some, it's beyond complex.

**So how do countries determine what their airspace looks like?** Airspace overhead the actual landmass belongs without question to the country, so that's easy.

Then, from the shoreline out to 12nm are the **Territorial Waters**, as agreed by the UN Convention on the Law of the Sea in 1982 – giving us "Territorial Waters Airspace".

The next chunk is the 12nm-200nm area – the **Exclusive Economic Zone**. In aviation, this sometimes has an effect on whether prior permission in the form of an Overflight Permit is required – Peru and Ecuador have in the past claimed this requirement. Beyond this, **International Waters** exist.

In aviation, the term of reference has become **High Seas Airspace**, and is taken to refer to anything outside the 12nm buffer where no country has sovereign jurisdiction over airspace. By international agreement, chunks of airspace are assigned to individual countries to provide an ATC service, because we prefer to have ATC watching us and providing separation, in comparison to trying to do it ourselves using 126.9 and TCAS.

As has been recently the case over the Black Sea, that agreement isn't always unanimous, and ICAO sometimes has to tread a difficult political line in assigning their preferred responsibility – last month Ukraine opened up routes in "High Seas Airspace" that Russia also wanted to have a crack at managing.

The Baltic Sea has long been a generator of news stories of **close encounters with the Bear** (Tu-95), this is because of the multitude of small chunks of High Seas Airspace that allow flights out of Russia towards the UK and Europe. ICAO is **concerned at the rising incidences of conflict** between civil traffic (that's us) and military flights over the Baltic.

These military flights operate under **Due Regard** – but **often don't file flight plans** and ATC know nothing about them until they are pretty close to you. You're unlikely to see them on TCAS either. So, that regard is not so high.

We'll continue the next time with a look at "No FIR Airspace" – those chunks of High Seas airspace where nobody is in control, mysteriously marked "XXX" on our charts.

---

## Why we have a "Now" Page

Mark Zee  
22 March, 2016

### NOW

#### What are we doing right now?

This **Now** page is a very simple list of the things we're working on, and finding interesting, right now. If you'd like to get involved in some of them, just [email us](#). Inspired by [Derek Sivers](#) - thank you!

- [This Overflight Map](#), showing News, Security Info, Overflight permit requirements for every country in the world, in javascript, and json data.
- Improving our [International Ops Bulletin](#). We've now got 25,000 readers, and enjoying the feedback and interest.
- Trying to figure out what's useful on our [Twitter Feed](#) (and what's not)
- Making the simplest summary we can make of what we do, which is now a PDF: [FSB: Our Story](#)
- Drawing a new [North Atlantic Plotting Chart](#)
- Improving the training process as we take on a couple of new [Flight Service Specialists](#), and welcoming [Megan](#)

**Internet rulebook: Flashy is better.** Make it polished, add images, video, a quote, and wrap it up with some ads. Sometimes (often, mostly?) – that's a tedious way to get through simple information. It's a clear message that the reader isn't being put first.

Most websites have an "About", and a "Contact us". But what is that person, or that company doing **now**? Would it be useful to have a "**Now**" page? We thought it might be, and we also thought the simpler, the better.

So, we added one, and you can see it at [fsbureau.org/now](http://fsbureau.org/now).

---

# Midweek Briefing: Australia Airport Workers Strike, ICAO Toughens Aircraft Tracking

Cynthia Claros  
22 March, 2016

**INTERNATIONAL  
BULLETIN**

**ISSUED BY FLIGHT SERVICE BUREAU**

SITA HNLFSXH AKLFSXH AFTN KMCOXAAL  
EMAIL INTL.DESK@FSBUREAU.ORG



**Australia Airport Workers Strike** 09MAR The Community and Public Sector Union (CSPU) announced the possibility of a strike during the week of 21 March, as well as three weeks of rolling airport strikes by Border Force and Immigration Department staff at international airports across the country. Airport staff members are expected to begin a work stoppage on 24 March, to coincide with the Easter holiday weekend, and will walk off the job at airports, freight terminals and other related sites. The work stoppages will be held to protest wage freezes and work conditions. Further details are likely to emerge closer to the strike.

**ICAO Toughens Aircraft Tracking while in distress** 02MAR The ICAO has announced new requirements for the real-time tracking of civilian aircraft in distress, following the disappearance of Malaysia Airlines flight MH370 two years ago. The ICAO's governing council approved proposals for planes to carry tracking devices that can transmit their location at least once a minute in cases of distress. Aircraft operators will have to ensure their flight recorder data is recoverable, while the duration of cockpit voice recordings is being extended to 25 hours, ICAO said in a news release. These changes will take effect between now and 2021.

---

**United States** Visa Waiver Program Passport Requirements Take Effect April 1. Visa Waiver Program (VWP) travelers must present an e-Passport containing a biometric chip in order to enter the United States visa-free after March 31, 2016. VWP travelers who do not hold an e-Passport should apply for a new passport as soon as possible to ensure that they can continue to use the program without interruption. The e-Passport requirement applies only to VWP travelers; it does not affect holders of U.S. visas.

**Canada** Electronic Travel Authorization Deadline Relaxed It has been announced that visa-exempt nationals who plan to enter or exit and re-enter Canada by air will be able to board their flight without an Electronic Travel Authorization (eTA) from March 15, 2016 until fall 2016.

**India** has extended its e-Tourist Visa program to applicants from 37 additional countries. Also, the visa-on-arrival program for certain Japanese nationals who are unable to apply for a regular or electronic visa has been relaxed to allow multiple visits per calendar year. Lastly, the deadline for Person of Indian Origin card holders to apply for the Overseas Citizen of India card in lieu of Person of Indian Origin card has been extended until June 30, 2016.

**Ecuador** The Ecuador's Geophysical Institute reported that the Tungurahua volcano has experienced a series of eruptions. Pyroclastic flows and fallen ash have collected near the crater. During past eruptions, the volcano's clouds of ash have disrupted flights to major airports in the region.

**KZWY/New York Oceanic** has issued NOTAM A0105/16 advising restrictions to routings in the WATRS PLUS area due to the (QVR) Oceana Radar being U/S on March 9th and March 10th between the hours of 14-22Z. The restrictions are issued as follows:

Northbound: L453 will be closed.

Southbound: M201 will be clsd btn int atugi and hanri.

Only aircraft equipped with operational ADS-260B out may use the following routes:

Southbound: L453 between LEXAD and ONGOT

North-eastbound: M201 between HANRI and ATUGI

All ADS-260B out aircraft must file an icao flight plan.

**UIBB/Bratsk** issued a NOTAM restricting the arrivals to only scheduled services due a fuel shortage until March 31st.

**PKMJ/Majuro (Marshall Islands)** Monthly tanker replenishment is planned for Mar 21-25. During this time, fuel will not be available.

**VTSP/Phuket, Thailand** has issued a NOTAM advising that the parking of private aircraft is prohibited overnight until April 25th.

**Nigeria** has experienced a country wide fuel shortage. Please check with your handler ahead of time to ensure fuel is available. Tankering is highly recommended until further notice.

**LCCC FIR/Nicosia FIR** Late notification of a military exercise in LCCC ACC starting on 09/03/2016 0300 UTC until 11/03/2016 1000 UTC. Exercise areas and route closures announced by following NOTAMs:

A0191/16 through A0196/16, A0208/16 and A0209/16 for area specifications. A0215/16 through A0220/16 for the route closures.

Please see the following graphic outlining the area:



[View the full International Bulletin 09MAR2016](#)

---

## Midweek Briefing:EU Border Controls Expanded, New NAT Plotting Chart published

Cynthia Claros  
22 March, 2016

## INTERNATIONAL BULLETIN

ISSUED BY FLIGHT SERVICE BUREAU

SITA HNLFSXH AKLFSXH AFTN KMCOXAAL

EMAIL INTL.DESK@FSBUREAU.ORG



**EU Border Controls expanded** 02MAR Travellers and crews operating to Denmark, Belgium and other EU countries will need to present travel documents to enter from another Schengen country. The security checks will likely cause travel delays for EU and non-EU travellers into the Schengen area.

**New NAT Plotting Chart published** 02MAR With the multitude of changes on the North Atlantic in the last few months, including new Tracks, end of MNPS, new HLA, RNP4 – we have published an **updated and revised Plotting Chart** for the NAT region, showing all new requirements and with updated Airport and Fuel pricing. It's effective 03MAR.

---

**VOXX/India** has expanded its e-Tourist Visa (eTV) program to applicants from 37 additional countries. Eligible visitors under the eTV include business visitors and those traveling to sightsee, visit friends or relatives or to make short medical visits. Nationals from a total of 150 countries are now eligible for the program.

**EXXX/Europe** Due to the introduction and continuation of border controls in the European Union, travellers to Denmark, Belgium and other EU countries will need to present travel documents to enter from another Schengen country. The security checks will likely cause travel delays for EU and non-EU travellers into the Schengen area. Belgium has instituted border controls at its borders with France. The security checks will remain in place until at least 23MAR.

**KTEB/Teterboro** will close 0500-1700Z (12 hour closure) this weekend – from midnight Saturday until noon Sunday. This closure is necessary to install new, mandatory hold short signs on Runway 19, which will close the runway intersection. Helicopter operations will be permitted during the closure.

**HKXX/Kenya** A visa on arrival is now available again at Nairobi, reversing the previous procedure established last year forcing all visitors to obtain one prior to flying. Online visas are still available. <http://evisa.go.ke/evisa.html>

**NFXX/Fiji** As of 25FEB, there are 42 confirmed deaths in Fiji due to the damage caused by Cyclone Winston, which made landfall over the 20-21 February weekend. Approximately 35,000 people are

sheltering in evacuation centers. There has been little to no contact with remote islands; therefore, the number of casualties and people displaced is likely much higher. Concern about the outbreak of mosquito-borne viruses, such as Zika and dengue fever.

**WAXX/Indonesia** Australian DFAT updated its travel advice for Indonesia, which reads: “We advise you to exercise a high degree of caution in Indonesia, including Jakarta, Bali and Lombok, due to the high threat of terrorist attack. We continue to receive information that indicates that terrorists may be planning attacks in Indonesia”

**SKXX/Colombia** is introducing ADS-B, with associated new phraseologies that crew should be aware of. ATC may ask “Notify capacity ADS-B”; response “ADS-B transmitter”, “ADS-B Receiver”, or “Negative ADS-B”. Full AIC.

**LOWW/Vienna** has a couple of new RNP AR (Authorisation Required) approaches to RWY 16 and 34 on test.

**LIXX/Italy** is joining the Free Route Airspace (FRA) bandwagon, airspace trial this coming weekend 05-07MAR at FL370 and above in Roma, Milano, Padova and Brindisi ACC, and Malta ACC.

**UKXX/Ukraine** Did you know that there was reduced horizontal separation in Ukraine airspace (RHSM)? Neither did we. Check out AIC 02/16.

**UIBB/Bratsk** has fuel supply issues again, current shortage until 31MAR.

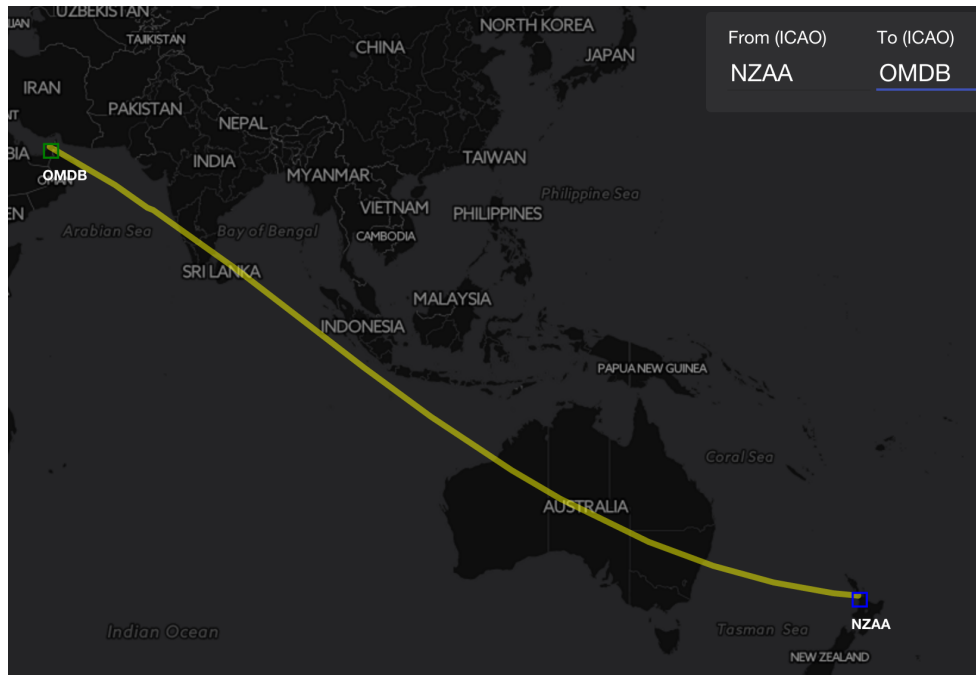
View the full International Bulletin 02MAR2016

---

## World's longest flight? That's about to change ...

Mark Zee  
22 March, 2016





**So what is the longest scheduled air route in the world at the moment?** If you said Panama-Dubai, you'd be right – but only for a few more days. As things stand, the PTY-DXB route, all 7463nm of it, takes on average 17 hrs 30.

With the introduction of the Boeing 787, the number of routes around the 7000nm mark is steadily increasing, to the point that we're probably going to have to stop calling them "Ultra Long Haul Routes". They are becoming the new norm. United are operating a SFO-SIN route with the 787-9 at 7339nm, and LAX-MEL at 6905nm.

From March 1st, the longest route in the world will become **Auckland-Dubai**, operated by Emirates with a B777-200LR. The leg distance is **7668nm**, and westbound this will be around 17 hrs 15. Use of the AUSOTS Track System and extension of UPR's (User Preferred Routes) into the New Zealand FIR has allowed this route to work, so that UAE can select the optimum wind routing for much more of the flight.

---

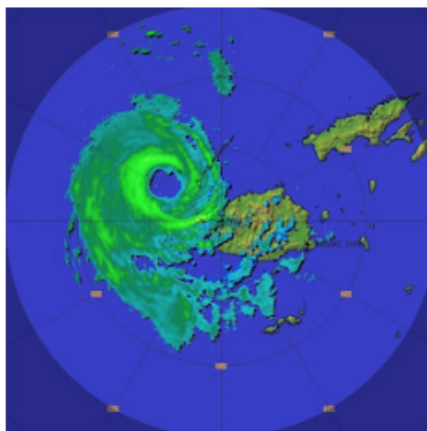
## Midweek Briefing: New Wake Turbulence Categories, Fiji Cyclone Winston

Cynthia Claros  
22 March, 2016

# INTERNATIONAL BULLETIN

ISSUED BY FLIGHT SERVICE BUREAU

SITA HNLFSXH AKLFSXH AFTN KMCOXAAL  
EMAIL INTL.DESK@FSBUREAU.ORG



**New Wake Turbulence Categories** 24FEB New Wake Turbulence Categories will begin a slow introduction in Europe on 22MAR at Paris Airports LFPG/De Gaulle and LFPB/Le Bourget, where the current four (Light, Medium, Heavy, Super) will become six. Those six new categories are Light, Medium (with Lower and Upper), and Heavy (with Lower, Upper and Super). Read the full article ...

**Fiji Cyclone Winston** 24FEB Fiji sustained widespread damage throughout the Islands on 21FEB from Tropical Cyclone Winston; most airports are open and operating again, including all international airports (NFFN/Nadi, NFNA/Suva). The following domestic airports are also open: Kadavu, Labasa, Rotuma, Labasa, Rotuma, Gau, Kadavu. NFNA/Suva has no overnight parking available at present due to congestion caused by the Relief effort.

---

**NFFN/Nadi, Fiji** Hit by Tropical Cyclone Winston on 21FEB, while there is widespread damage throughout the Islands, most airports are open and operating again, including all international airports (NFFN/Nadi, NFNA/Suva). The following domestic airports are also open: Kadavu, Labasa, Rotuma, Labasa, Rotuma, Gau, Kadavu. Note that NFNA/Suva has no overnight parking available at present due to congestion caused by the Relief effort.

**KAGS/Augusta, USA** Special Procedures in place 07-10APR for US Masters Golf Tournament.

**EXXX/Europe** New Wake Turbulence Categories will begin a slow introduction in Europe on 22MAR at Paris Airports LFPG/De Gaulle and LFPB/Le Bourget, where the current four (Light, Medium, Heavy, Super) will become six. Those six new categories are Light, Medium (with Lower and Upper), and Heavy (with Lower, Upper and Super). The rules are part of the RECAT-EU project, with the intention of squeezing more traffic into busy European Airports by applying more precise turbulence separation rules. The separation minima are determined specific to each Aircraft Pair. For example, at the moment, an A330 following a B777 (Heavy behind heavy) requires 4 miles in trail. With the new rules, that is reduced to 3nm. An A320 can now follow 4 miles behind a B777, instead of the current 5nm. There are no Flight Planning Changes (continue to use /L,M,H,J for the ICAO Category). For crews, you'll notice the smaller separation, but there are no changes to callsigns or pilot obligations - for now. Read full article.

**DRRR/Niamey FIR** Air Traffic Control 48HR strike 24 and 25FEB. The ASECNA Contingency plan is

activated, with ATC provided by neighbouring ACC's Dakar and N'Djamena.

**LTXX/Turkey** We have received several reports that Overflight Permits, which were removed as a general requirement for non-scheduled flights in 2015, are being requested by Turkey for Business Aviation aircraft, specifically M- and VP- registrations. Reports welcomed to clarify to [bulletin@fsbureau.org](mailto:bulletin@fsbureau.org).

**RCTP/Taipei** Airport works on several parking positions may create availability issues from 04MAR-04APR especially for Airbridge gates. Check with handler.

**LFPB/Paris Le Bourget** Due WIP airport will be closed during 10 nights from 15FEB to 26FEB, every night from 2045 to 0500Z. No Medevac flights will be possible.

**EPKK/Krakow** Runway 07/25 is closed daily 2330-0430 until 03MAR.

**UXXX/Simferopol FIR** EASA published an updated SIB 2015/16 regarding the use of Simferopol FIR on 17FEB. The key change is the phased reintroduction of the use of Simferopol FIR for international transit traffic, on the basis of an evaluation of the high seas portion of the airspace (ie. outside the 12nm territorial limit of the Crimean Peninsula). This airspace provides routes UL851 and UM856 (Odesa South Sector), which since 17FEB are suggested by EASA for use by overflying traffic.

**YMML/Melbourne** will host the Formula 1 Grand Prix 17-20MAR, with additional traffic to both YMML and YMEN/Essendon during these dates.

**EHAM/Amsterdam** has changed the callsign of Schiphol Start-up to "Schiphol Planner".

**OYAA/Aden, Yemen** Airport closed and all flights cancelled since 21FEB due to security concerns.

**NVTV/Port Vila** On 17FEB local officials signed an agreement with a private contractor to begin repairing the runway. Several airlines suspended flights on 23JAN due to safety concerns with the airport's runway. Aviation officials stated that the renovations should begin in March.

[View the full International Bulletin 24FEB2016](#)

---

## Caution Wake Turbulence: New Rules for the EU

Mark Zee  
22 March, 2016



**What Wake Turbulence Category is a B757?** That long favoured question by Dispatch Trainers and ATC Instructors will become a thing of the past under new rules slowly being introduced in Europe, where the current four (Light, Medium, Heavy, Super) will become **six**. The first place you will see this happening is at LFPG/Paris Charles de Gaulle and LFPB/Paris Le Bourget, from 22 MAR 2016.

Those **six new categories** are Light, Medium (with Lower and Upper), and Heavy (with Lower, Upper and Super). The rules are part of the RECAT-EU project, with the intention of squeezing more traffic into busy European Airports by applying more precise turbulence separation rules.

The separation minima are determined specific to each Aircraft Pair. For example, at the moment, an A330 following a B777 (Heavy behind heavy) requires 4 miles in trail. With the new rules, that is reduced to **3nm**. An A320 can now follow 4 miles behind a B777, instead of the current 5nm.

There are no Flight Planning Changes (continue to use /L,M,H,J for the ICAO Category). For crews, you'll notice the smaller separation, but there are no changes to callsigns or pilot obligations – for now.

## New Wake Turbulence Categories

Phased Introduction from 22MAR2016

Flight Service Bureau ©

	Max Take Off Weight (MTOW)	Wing Span
<b>SUPER HEAVY</b>		> 72m
<b>UPPER HEAVY</b>	<b>100,000 KGS +</b>	60 – 72m
<b>LOWER HEAVY</b>		< 52m
<b>UPPER MEDIUM</b>	<b>15 – 100,000 KGS</b>	> 32m
<b>LOWER MEDIUM</b>		< 32m
<b>LIGHT</b>	<b>15,000 KGS -</b>	

SUPER HEAVY	UPPER HEAVY	LOWER HEAVY	UPPER MEDIUM	LOWER MEDIUM	LIGHT
A380	B777*	B757*	B737-6	B737-3	D328
	B747*	B767*	B737-7	B737-4	FA10/20
A124	B787*		B737-8	B737-5	C560
			B737-9		C56X
	A340*	A310*	A318	all ATR	C650
	A330*	A300*	A319	all DH8	C680
	A350*		A320	all BAE	H25B
			A321	all CRJ	LJ35/45
	IL96	C135	C130/C160		SF34
	AN22	MD11/DC10	all MD80	EMB 135	SW4
		IL76	MD90	at 195	BE40
	* all current types	TU95/22	TU204		EMB120
		*all types	BCS1	F70/F100	
			BCS3	GLF2/4	
				CL30/60	

References:

- France AIC 03/16
- Eurocontrol RECAT-EU Project

---

## Midweek Briefing: Residual Disinsection for Italy, New Moscow Airport

Cynthia Claros  
22 March, 2016

## INTERNATIONAL BULLETIN

ISSUED BY FLIGHT SERVICE BUREAU

SITA HNLFSXH AKLFSXH AFTN KMCOXAAL

EMAIL INTL.DESK@FSBUREAU.ORG



**Italy now requiring Residual Disinsection** 17FEB In light of the spreading global coverage of Zika Virus cases, countries are rapidly changing rules related to Quarantine and Health. Italy is now requiring residual aircraft disinsection for every aircraft coming from any area, not only Zika affected ones.

**Moscow Ramenskoye opens to civil traffic** 17FEB UUBW/Moscow Ramenskoye, which previously served as a military airfield, is scheduled to open to civil traffic as an International Airport on 16MAR, becoming the fourth Moscow Airport. **Read more ...**

---

**UUBW/Moscow Ramenskoye**, which previously served as a military airfield, is scheduled to open to civilians as an International Airport on 15MAR2016. The airport will be Moscow's fourth largest and is expected to serve approximately 1.9 million passengers per year. Russian Railways is planning on constructing a direct rail link between the facility and Moscow. Read the full article.

**Worldwide** As the mosquito-borne Zika virus spreads worldwide, some health and aviation authorities have begun targeting business aircraft to be treated with insecticide – similar to requirements that have been in place for commercial aircraft arriving from certain points of origin. The most prominent to date is Italy, which has reported several recent cases of the Zika virus affecting people who returned from trips to South America and the Caribbean. A "Certificate of Residual Disinsection" is now required for all aircraft operating in Italy, following recommended WHO and International Civil Aviation Organization Annex 9 procedures. Italy had originally limited the certificate requirement to aircraft arriving from Zika-affected countries, but "within 36 hours that changed" to all countries. Authorities in Costa Rica are requiring that aircraft arriving from affected countries be sprayed on arrival – with crew, passengers and luggage aboard – with an insecticide provided by the local agriculture department.

**UADD/Taraz, Kazakhstan** has been upgraded to RFF/Rescue Fire CAT9, and with regular international flights starting in June, should have customs available. Maybe become a useful Central Asian en-route

alternate.

**UKLV/Lviv FIR, Ukraine** A new Notam (A0193/16) is issued to extend the ban in Ukrainian Airspace of any aircraft operator registered in the Russian Federation until 09MAY.

**NWWW/Noumea** has multiple runway (and therefore airport) closures until 25FEB, check Notams carefully if operating.

**NZAA/Auckland** Work is currently in progress on the threshold of RWY 23L with the threshold inset 2,270m. The information is contained within AIP updates and not via NOTAM. Operators should note there is are no ILS approaches available at Auckland until 30MAR. While weather is usually very good during February and March operators can expect delays in poor wx.

**NZQN/Queenstown** is closed from 1800 each day until 31MAR for runway widening works.

**AYPY/Port Moresby** Telecoms outage continues. To contact ATC Centre use (675) 325 8704 instead of published numbers. Multiple VHF freqs out of service, use HF 5565 as alternate.

**RPHI/Manila** has a radar outage on 18-19FEB meaning procedural control will affect the Luzon island area within the FIR, 10/15 minute enroute separation as standard.

**Somalia** A local terrorist organisation claimed responsibility for the bombing of a Daallo Airlines passenger aircraft on 02FEB shortly after it took off from Mogadishu's Aden Adde International Airport (HCMM/MGO). The bombing forced the Airbus A321-111 to make an emergency landing at Mogadishu's airport.

**South Africa** Refurbishment will affect Johannesburg's OR Tambo International Airport (FAOR/JNB) beginning 13FEB when security and immigration will move from Terminal A to the Central Terminal. Slow processing expected until end March.

**US and Cuba advance Air Service agreement** US officials will travel to Havana to officially sign the agreement that will make the two countries a step closer for its first commercial flights. Once the US-Cuba air travel pact that was agreed upon on 16DEC2015 will be finalized, airlines will have about two weeks to submit applications for US-Cuba routes with the US Department of Transport and get approval from Cuban authorities to obtain space at Cuban airports. Industry experts expect that the first Cuba-bound flights will be in the air sometime in 2016.

View the full International Bulletin 17FEB2016

---

## New Moscow Airport: Ramenskoye

Mark Zee

22 March, 2016





March 16th will see the official opening of **UUBW/Moscow Ramenskoye** to civilian flights, after a long history of serving as an experimental design base for both military and civil aircraft, with most Russian OKB's having a base on the airfield.

The main runway 12/30 is 5,402 metres, making it the second longest runway in the world, second only to ZUBD/Qamdo Bamda in Tibet (that one is 5500m).

Ramenskoye will be the fourth International Civil airport in Moscow, and will provide an additional alternative to Sheremetyevo, Domodedovo, and Vnukovo. It is also known as Zhukovsky, and hosts the MAKS Airshow every two years.

The data: ICAO: UUBW, IATA:ZIA, Runway Length: 5402m, Elevation: 404ft, Operator: Ramport.

---

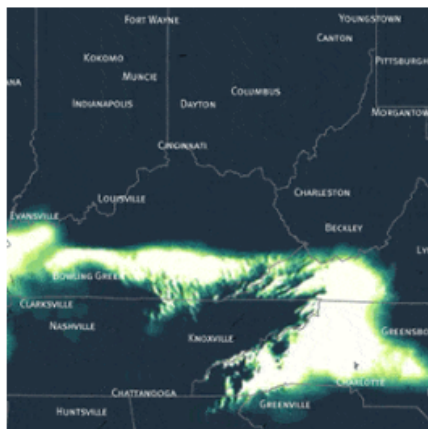
## Midweek Briefing: New Canada Entry Rules, Winter Storms clear Newfoundland

Cynthia Claros  
22 March, 2016

## INTERNATIONAL BULLETIN

ISSUED BY FLIGHT SERVICE BUREAU

SITA HNLFSXH AKLFSXH AFTN KMCOXAAL  
EMAIL INTL.DESK@FSBUREAU.ORG



**New Canada Entry Rules** 10FEB CXXX/Canada Starting 15 MAR 2016, visa-exempt foreign nationals who fly to or transit through Canada will need an Electronic Travel Authorization (eTA). Exceptions include U.S. citizens and travellers with an existing visa, and commercial aircrew. **Read more ...**

**Winter Storms clear Newfoundland** 10FEB Nova Scotia and Newfoundland (CYQX, CYHZ, CYYT) have two severe Winter Storms passing through this week; Halifax will see up to 40cm of snow, affecting diversion choices on the North Atlantic. **The visualisation above** shows the US Winter storm at the end of January.

---

**MKJK/Kingston FIR Jamaica**, has ongoing issues with radar coverage and serviceability, leading to ad-hoc flow management procedures including 15 minute en-route separation, and 10 minute arrival separation at international airports. Latest update indicates this will continue throughout February. We have had several reports from international airlines of delays averaging around 1 hour on departure. Further reports welcome to [bulletin@fsbureau.org](mailto:bulletin@fsbureau.org).

**SKED/Bogota ACC, Colombia** is applying 20 minute spacing for northbound flights heading into Jamaican airspace due to the increasing delays there.

**SPIM/Lima FIR** Peru have published new Aircraft Interception procedures for Civil Aircraft. Probably worth a look – although, we must warn you, they are in Spanish only, and exceptionally lengthy. Maybe just double check that overflight permit and keep in touch with ATC instead.

**North Atlantic** As mentioned last week, effective 04FEB MNPS Airspace is replaced by HLA/High Level Airspace on the North Atlantic. A popular topic. RNP4 or RNP10 now required. Read our International Ops Notice 01/2016 or our blog post: Did you know MNPS is over?

**NVVV/Port Vila, Vanuatu** Several airlines have suspended operations here effective 01FEB16 over concerns as to the condition of the runway. Airport remains open without restriction.

**PACD/Cold Bay** has no Jet A1 Fuel available until 29FEB

**HRYP/Kigali**'s runway is closed on a nightly basis from 0200-0700 local time (0000-0500 UTC) until 31MAR for repairs.

**North Korea** launched a long range rocket at 0031Z on 07FEB. According to preliminary reports, the rocket passed over the Japanese island of Okinawa and landed in the Pacific Ocean. US military officials stated that the rocket did not pose a threat to the United States or allies in the region. South Korean media reported that North Korea is preparing for another nuclear test and has the technology necessary for an inter-continental ballistic missile (ICBM).

**AYPY/Port Moresby** has a number of common VHF frequencies out of service because of a Telecomms fault. ATC advise to call them on HF HF 5565, 8861, 6622, or 8837, if able.

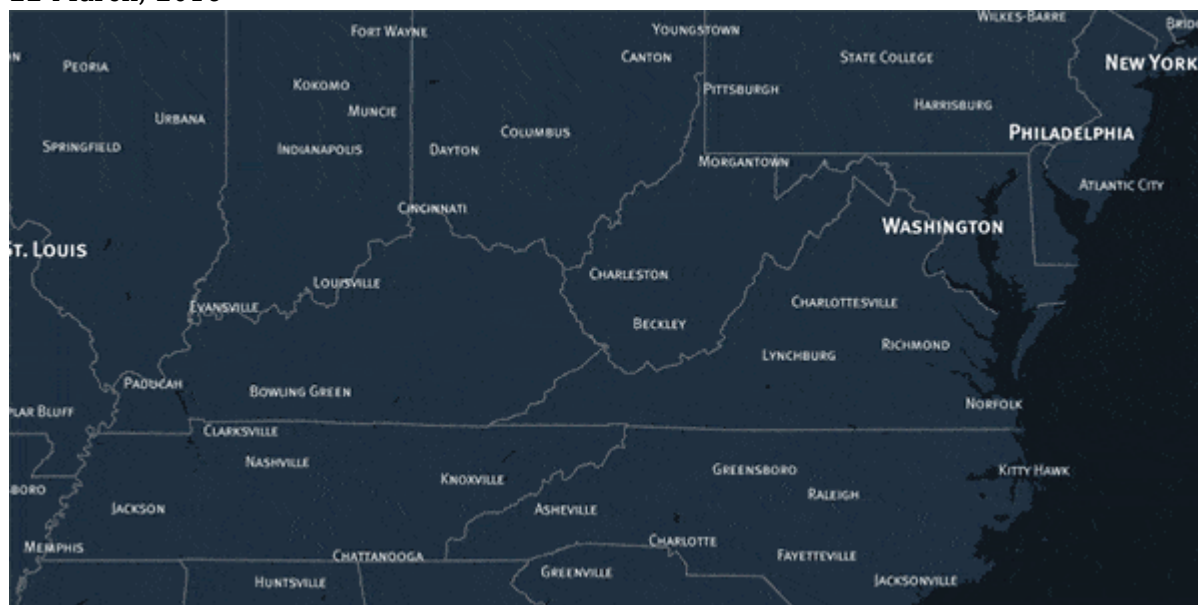
View the full International Bulletin 10FEB2016

---

## A different map: Winter Storm

Mark Zee

22 March, 2016



Apart from the routine Flight Operations that we support at the **Flight Service Bureau**, we spend a fair bit of time building new things. Much of time, those things involve maps, and so we keep our eyes out for new ideas ... and we especially liked this graphic presentation of US Winter Storm Jonas at the end of January 2016.

We took the original and slowed it down a little, but what you'll see here is forecast data from NOAA's High Resolution Rapid Refresh Model to animate the storm's arrival in the Mid-Atlantic. The map shows water equivalent accumulated snow depth, or WEASD, which we can think of as the volume of water contained in the snow on the ground.



---

## Canada Entry: New Rules for 2016

Declan Selleck  
22 March, 2016



**Update (16MAR2016):** Canada has announced a Leniency Period for this new rule “until Fall” – which we take to mean September 2016. Visit the official site link below for the latest.

---

Starting **15 MAR 2016**, visa-exempt foreign nationals who fly to or transit through Canada will need an Electronic Travel Authorization (eTA). Exceptions include U.S. citizens and travellers with an existing visa.



The system is similar to the ESTA (Electronic System for Travel Authorization) currently in use by the USA. Until now, visa-exempt foreign nationals seeking entry to Canada are not systematically screened for admissibility until they arrive at a Canadian port of entry.

The Canadian pre-approval system will only be required for TRV-exempt individuals seeking to enter Canada by air to visit on a temporary basis. A fee of CAD \$7.00 will be required for processing. Electronic travel authorization will be valid for a period of five years.

A number of exemptions from the requirement to obtain pre-approval to travel will be in place, including:

- nationals of the United States,
- individuals already in possession of a Canadian temporary resident visa,
- certain foreign diplomats,
- **commercial air crew**
- individuals in possession of a visa to enter the United States on a flight bound for that country in transit through Canada, where the sole purpose of the flight stopping in Canada is for purpose of refuelling,
- individuals transiting through Canada as a passenger on a flight who are in possession of any visa required to enter the country of destination

For the full details, and to apply for an eTA if you need one, take a look at the **official Canada eTA site**.

---

## Midweek Briefing: Chinese Airport Delays, Eurocontrol NOP Changes

Cynthia Claros  
22 March, 2016



**Chinese Airport Delays** 03FEB ZXXX/China This is the busiest travel week of the year in China, with millions travelling for the Chinese New Year on 08FEB. Winter storms are forecast to impose delays across central Chinese airports; those currently affected include ZWWW/Urumsqi Diwopu, ZSNJ/Nanjing Lukou, ZGGG/Guangzhou, and ZHHH/Wuhan Tianhe.

**Eurocontrol NOP Changes** 03FEB There are some significant changes to the daily Eurocontrol Briefings effective this week. Network News is no longer, and the D-1 daily conference is also gone. Instead, an Initial Network Plan is published each day at 1700Z on the **Network Operations Portal**.

---

**TTxx/Trinidad and Tobago** The annual Carnival in Port of Spain will take place on 08-09FEB . Travel and tourism activities are expected to continue for up to two weeks after the celebration and will be busiest during weekends. 10FEB (Ash Wednesday) is expected to be the busiest day of the year at the Port of Spain airport.

**EISN/Shannon FIR** Correction \*\* Due to a number of flights deviating from clearances prior to exiting Shanwick OCA, flight crews are reminded that Eastbound route clearances issued by Shannon Control for aircraft **exiting** Oceanic Airspace apply from AGORI, SUNOT, BILTO, PIKIL, ETARI, RESNO, VENER, DOGAL, NEBIN, MALOT, TOBOR, LIMRI, ADARA, DINIM, RODEL, SOMAX, KOGAD, BEDRA, OMOKO, TAMEL AND LASNO. Flights shall not turn **before** these points. In other words: wait until you enter (\*\* Thank you to Shannon ATC for pointing out the error in last weeks bulletin).

**North Atlantic** Effective 04FEB MNPS Airspace is replaced by HLA/High Level Airspace on the North Atlantic – extended with Bodø joining Shanwick, Gander, Reykjavik, New York, and Santa Maria. RNP4 or RNP10 now required. Read our **International Ops Notice 01/2016** or our blog post: **Did you know MNPS is over?**

**Eurocontrol NOP Changes** There are some significant changes to the daily Eurocontrol Briefings effective 01FEB. Network News is no longer, and the D-1 daily conference is also gone. Instead, an Initial Network Plan is published each day at 1700Z on the Network Operations Portal.

**FMMM/Madagascar** CAA have issued a reminder to inbound operators that a Passenger List must be sent 24 hrs prior to departure for Madagascar, by email to gdp@acm.mg.

**MKJK/Kingston FIR** Jamaica, has ongoing issues with radar coverage and serviceability, leading to ad-hoc flow management procedures including 15 minute en-route separation, and 10 minute arrival separation at

international airports. Delays appear likely. Reports welcome to [bulletin@fsbureau.org](mailto:bulletin@fsbureau.org).

**FHAW/Ascension Island** is now operating at Rescue and Firefighting Category 8/RFF8.

**United Kingdom** Last week the UK Registered Traveller Service, which is the equivalent of the US Global Entry program, was expanded to include a few more countries: Hong Kong, Singapore, South Korea and Taiwan. Additionally, Bristol and Cardiff will be added to the list of participating airports.

**MUXX/Cuba** Flight crews of US based aircraft can now remain in Cuba with their aircraft when traveling to the island nation, instead of having to reposition immediately after offloading passengers. The change took effect on 27JAN, with new amendments to the Cuban Assets Control Regulations and Export Administration Regulations issued by the U.S. OFAC and BIS.

**NCRG/Rarotonga**, Cook Islands has new hours of ATC service: 2050 SUN-0400 MON, 1500 MON-1930 MON, 0530 WED-1400 WED, 2100 THU-1000 FRI, 2100 FRI-1000 SAT, 1400 SAT-1930 SAT, 0600 SUN-1130 SUN. These are UTC/Z Times, local is UTC-10. Raro is an important diversion airport in the South Pacific, especially for Easter Island and Tahiti. ATC is avail with 30 mins PN outside these hours (call +682 25890/71439).

**EHAM/Amsterdam** has raised the minimum vectoring altitude from 1200ft to 1600ft, which seems to spell an end to those super efficient 3 mile final approaches to 06. Still the best Terminal ATC in Europe.

**Europe** EASA has launched a 2 person cockpit survey to open discussion on the impact of their new recommended practice of always having 2 crew members in the cockpit.

**PKMJ/Majuro**, Marshall Islands - ExxonMobil will have no fuel during tanker replenishment, scheduled for 13-17FEB.

**ZXXX/China** This is the busiest travel week of the year in China, with millions travelling for the Chinese New Year on 08FEB. Winter storms are forecast to impose delays across central Chinese airports; those currently affected include ZWWW/Urumqi Diwopu Int'l, ZSNJ/Nanjing Lukou Int'l, ZGGG/Guangzhou, and ZHHH/Wuhan Tianhe.

**ENGM/Oslo** Oslo Airport has started supplying Air BP Biojet via its regular fuel hydrant system, naming three large European airlines as launch customers. It is now supplied from the main fuel farm, via common storage and distribution facilities, without the need for segregated infrastructure. Previously, it had to be provided by fuel truck.

**DNKK/Kano ACC** Nigeria, Area Radar Service is provided H24 from 04FEB.

View the full International Bulletin 03FEB2016

---

## UK Registered Traveller service updated

Mark Zee  
22 March, 2016





Those that enjoy waiting at Immigration can skip this article; for the rest of us, every additional measure in mitigating those delays are more than welcome. Last week the **UK Registered Traveller Service**, which is the equivalent of the **US Global Entry program**, was expanded to include a few more countries: **Hong Kong, Singapore, South Korea** and **Taiwan**. Additionally, Bristol and Cardiff will be added to the list of participating airports.

Good news then, especially with the revelation that the **target** processing time at life-sapping airports like London Heathrow is **45 minutes**. If you've had the pleasure to fly to LHR's American cousin, JFK, then you may well be among those who've waited in the 1-2 hour statistical range.

For positioning crews, airline staff, or anyone else that isn't eligible for the Duty Crew line – enrolling in a couple of these programs will prove useful. Global Entry gets you automatic entry into TSA Pre✓® as well (which will come in handy when you discover that US Domestic queues for TSA are as long as the international ones ...)

---

## On simplifying International Flight Information ...

Mark Zee  
22 March, 2016



Our aim with the weekly **International Ops Bulletin** that we produce is to take relevant operational news affecting International Flight Operations each week, and **simplify it**.

It's a learning process for us as well, because the technical language of aviation is often unnecessarily **verbose, legalese, jargon-filled text**. Spare a moment for those of us that don't have English as our first language (and that's most).

Our process is to read through the source data, translate them into bullet point plain English, and combine these with the Flight Reports, News, and Input that we get from our 25,000 or so readers.

For each item, we also ask ourselves one simple question. **Would this affect my decision as an Aircraft Operator to fly to this Airport?** If yes, then we'll include it – relevance is as important as clarity.

Some stories are worth expanding into a quick blog post, primarily to gather the useful links into one spot so that you can explore more of the story if you want to, and those will appear here.

We've now moved to publishing the Bulletin on a Wednesday; blog posts can happen anytime. For regular email delivery, just **pop your details in here**.

---

## **Midweek Briefing: Mexico Volcano Eruption, Atlantic MNPS is over... Introducing HLA**

Cynthia Claros  
22 March, 2016



**Mexico Volcano Eruption** 29JAN Popocatepetl Volcano, which is 55 kilometres southeast of Mexico City, had its last major eruption in 2000; it erupted on Tuesday this week affecting flight operations at **MMPB/Puebla**, and with the risk of further eruptions affecting operations in Mexico City itself.

**Atlantic MNPS is over... introducing HLA** 29JAN Effective next week, 04FEB, there are another round of changes on the North Atlantic – HLA/High Level Airspace is the replacement for MNPS, and the airspace is extended with Bodø joining Shanwick, Gander, Reykjavik, New York, and Santa Maria. Read our **International Ops Notice 01/2016**.

---

**North Atlantic** Effective 04FEB MNPS Airspace is replaced by HLA/High Level Airspace on the North Atlantic – extended with Bodø joining Shanwick, Gander, Reykjavik, New York, and Santa Maria. RNP4 or RNP10 now required. Read our **International Ops Notice 01/2016** or our blog post: **Did you know MNPS is over?**

**TTxx/Trinidad and Tobago** The annual Carnival in Port of Spain will take place on February 8 and 9, 2016. Travel and tourism activities are expected to continue for up to two weeks after the celebration and will be busiest during weekends. February 10, 2016 (Ash Wednesday) is expected to be the busiest day of the year at the Port of Spain airport. February 8 to 9, 2016 is also expected to be a congested time for departures.

**KSFO/Super Bowl 50** The FAA will not be imposing a slot-based special traffic management program for the game on 08FEB, but ramp reservations, made through specific FBOs, will be required for all arrivals and departures from 04-08FEB. The rule will apply to all airports in the region, including San Francisco International, Oakland International, Hayward Executive, Norman Y. Mineta San Jose International, Livermore Municipal, Buchanan Field, Napa County, Charles M. Schulz-Sonoma County, Monterey Regional, Watsonville Municipal and Salinas Municipal. NBAA has set up a Super Bowl 50 information page that includes links to the FAA arrival/departure routes.

**Uxxx/Tajikistan** The U.K.'s Foreign and Commonwealth Office (FCO) issued updated travel advice for Tajikistan that reads as follows: "In early September 2015, armed clashes involving security forces resulted in a number of deaths close to Dushanbe International Airport and in the Romit Valley not far from Dushanbe. While tensions have eased, security remains heightened. You should continue to take extra care, monitor the local media and check this advice regularly."

**KFZZ/Falcon Field, Arizona** In January and February, Runways 4R/22L and 4L/22R at Falcon Field Airport (FFZ) in Mesa, AZ will be closed non-concurrently for the taxiway ALPHA realignment construction project. These are hard closures with no potential for runway recall. Runway 4L/22R had closed Jan. 12, at 6 a.m. (1300Z) and will remain closed until Saturday, Jan. 30, 2016. Runway 4R/22L is expected to close Monday, Feb. 1, at 6 a.m. (1300Z) and remain closed until Sunday, Feb. 15.

**Kxxx/United States** A few weeks ago we reported on new FAA FDC NOTAMs that eliminate the need to obtain a TSA Waiver for domestic flights in the US. on 17JAN The FAA has corrected an error in these (in simple terms, they forgot to include some previously issued exceptions), and so there are 3 brand new NOTAMS effective – these are 6/4255, 6/4256 and 6/4260. Got some time?**Read the original NOTAMs in full.**

**Mxxx/Mexico** The U.S. Department of State warns U.S. citizens about the risk of traveling to certain places in Mexico due to threats to safety and security posed by organized criminal groups in the country. U.S. citizens have been the victims of violent crimes, such as homicide, kidnapping, carjacking, and robbery by organized criminal groups in various Mexican states. This Travel Warning replaces the Travel Warning for Mexico, issued May 5, 2015

**EISN/Shannon FIR** Due to a number of flights deviating from clearances prior to exiting Shanwick OCA, flight crews are reminded that Eastbound route clearances issued by Shannon Control for aircraft exiting Oceanic Airspace apply from AGORI, SUNOT, BILTO, PIKIL, ETARI, RESNO, VENER, DOGAL, NEBIN, MALOT, TOBOR, LIMRI, ADARA, DINIM, RODEL, SOMAX, KOGAD, BEDRA, OMOKO, TAMEL AND LASNO. Flights shall not turn before these points.

**Uxxx/Russia** The Russian Institute of Volcanology has issued a code orange alert after Russia's Zhupanovsky volcano began erupting earlier this week, sending clouds of ash and gas to 27,000 ft. A code orange advises pilots to avoid flying near the ash cloud, reportedly moving over the North Pacific Ocean driven by prevailing easterly winds.

**UIII/Irkutsk** has issued NOTAM A0134/16 closing RWY 12/30 weekly on Tuesdays from 1210-1450Z beginning Feb 02 and ending March 22. UIII is not available as an alternate during those times.

**UHSS/Yuzhno** is closed daily between 0330-0500Z due to preventative maintenance. No end date has been issued.

**RPHI/Manila FIR** has begun Phase 1-b of an ADS/CPDLC trail. The specific details of the plan can be found [here](#).

**Wxxx/Indonesia** As of 19JAN, Mount Egon has been erupting on Flores Island, which is located east of Bali Island. Egon emitted large amounts of ash and noxious gas. As of yet, the eruption has not caused any flight delays or cancellations; however, previous volcanic eruptions in the lesser Sunda Islands have caused extended delays in Denpasar and Mataram.

**Zxxx/China** Talks with the Zhuhai municipal government, Chinese government, Zhuhai Airport Authority and the Civil Aviation Authority China (CAAC) resulted in temporary International China Inspection and Quarantine (CIQ) services at Zhuhai Airport for non-scheduled business aviation movements. Following the approval late last month, China's National Port Administration Office opened a temporary customs port on January 1. The approval is renewable on a six-month basis. During the "approval period" from January 1 to June 30, crewmembers of foreign business aviation flights can enter and exit China via the temporary business aviation port at Zhuhai Airport.

View the full International Bulletin 27JAN2016

---



# Did you know MNPS is over? Meet HLA, the new North Atlantic Airspace.

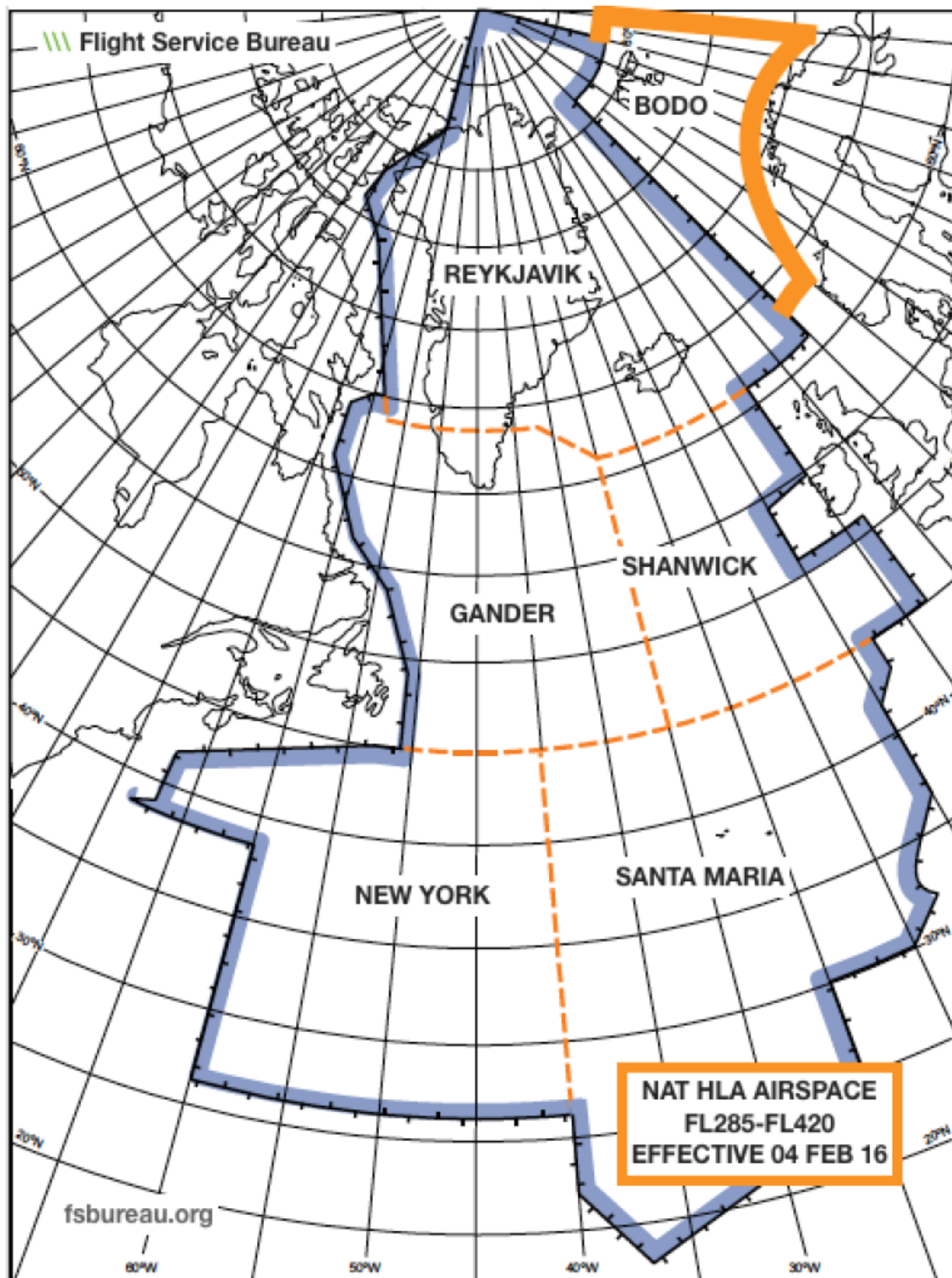
Mark Zee

22 March, 2016



From Feb 4th, 2016, **MNPS** (Minimum Navigation Performance Specifications) Airspace is being dumped as a term (no loss, really), and replaced by the much more user friendly **NAT High Level Airspace or NAT HLA**. MNPS first came into being in 1977, and this change is significant in that the requirements for approval to enter the new NAT HLA are updated – you must now have RNP4, or RNP10. Also, the rest of the Atlantic welcomes Bodø Oceanic to the fray – it joins Shanwick, Gander, Reykjavik, New York, and Santa Maria to make up the new NAT HLA, which keep the original vertical profile of FL285-FL420.

In short, that's all you need to know. You should read our **International Ops Notice 01/16** for the full story.



New NAT HLA High Level Airspace Map

---

# Monday Briefing: Your Attention Please, US Airport Disruptions

Cynthia Claros  
22 March, 2016

<b>INTERNATIONAL BULLETIN</b>	<b>ISSUED BY FLIGHT SERVICE BUREAU</b>
	SITA HNLFSXH AKLFSXH AFTN KMCOXAAL EMAIL INTL.DESK@FSBUREAU.ORG



**Your Attention Please** 18JAN As we reach 25,000 readers, **your help is requested.** We want to make sure we're delivering the best bulletin to you, so if you have a few moments, please **answer 3 questions.** You'll receive a gift token for use in the **Flight Service store.**

**US Airport Disruptions** 18JAN Airport workers plan disruptions in nine U.S. cities on MLK Day (Monday). Watch out for industrial action in Boston, New York City, Newark, Philadelphia, Miami, Chicago, Portland, and Seattle.

---

**FJDG/Diego Garcia** is closed from 15JAN to 19JAN.

**WSSS/Singapore** 2016 Airshow takes place 16-21FEB at Changi. Planning for parking, accommodation and when required permits should be arranged as early as possible.

**LTBA/Istanbul** is expecting a significant snow event on Monday. Commercial carriers have already preemptively canceled flights until the storm passes. Please check latest weather advisories and plan accordingly.

**Kxxx/United States** Airport workers plan disruptions in nine U.S. cities on MLK Day (Jan 18th). Watch out for industrial in Boston; New York City; Newark, N.J.; Philadelphia; Miami; Chicago; Portland, Oregon; and Seattle.

**LSZH/Zurich** Delays this week due to World Economic Forum in Davos.



**KMCO/Orlando** A two-phase runway construction project at is scheduled to begin 12JAN and continue into April 2016. Runway 17R/35L will be closed during phase one, and Runway 18L/36R will close during phase two.

**TBPB/Bardados** is closed nightly from 0400-1000Z UTC due to work on the ATS building from Jan 13th to Jan 28th. Airspace is also downgraded to Class G to FL245 on the 13th, 14th, 20th, 21st, 27th and 28th. Please see NOTAM A0030/16 for full details.

**URSS/Sochi** reports of low fuel availability, check with Airport for latest, tankering recommended regardless.

**NZxx/New Zealand** The Aviation Security Officers Union advised on 14JAN of a possible strike. The union identified no date for the possible strike. Airport officials stated that if security officers strike, the air transportation will come to a standstill nationwide.

**VIDP/New Delhi** Airspace closed to commercial flights for more than an hour every day beginning next week in view of the Republic Day celebrations. 1035-1215 local, on 19-24JAN, and 26JAN.

**West Africa** The World Health Organization announced last week that the Ebola epidemic in West Africa is officially over. For the first time since the outbreak began in December 2013, all three of the hardest-hit West African nations — Liberia, Guinea and Sierra Leone — have had zero reported cases of Ebola for 42 days in a row, a period equal to two full incubation cycles of the virus.

**VHHH/Hong Kong** According to reports on 13JAN, thieves targeted a South African national aboard South African Airways flight 286 from Johannesburg to Hong Kong on 21 December. The victim stated that a fellow passenger alerted him that other passengers had taken his baggage while he was sleeping and rummaged through it in the aircraft lavatory. When the victim subsequently inspected his baggage, he found that the lock had been broken and foreign currency worth approximately \$1200, as well as items of jewelry, were missing. Hong Kong police officers searched several suspects when the aircraft landed, but the stolen items were not found. This type of crime is reportedly a significant problem on international flights bound for Asian destinations, particularly Hong Kong. According to statistics released by Hong Kong authorities in August 2015, a total of 45 in-flight robberies had been reported up to that point in 2015; 48 cases occurred in 2014. Cash, jewelry and smartphones are especially targeted.

**Lxxx/Turkey** Foreign nationals filing certain visa applications at a consular post must now upload their application documents online through the Turkish electronic visa application system prior to appearing at a consular post. Applicants must still submit their visa application forms and supporting documents in person at a Turkish consular post. This system does not impact electronic visas for those nationals eligible for E-visas, but does impact business visitors who must acquire a consular visa.

**Int Ops Bulletin** As we reach 25,000 readers, your help is requested. We want to make sure we're delivering the best bulletin to you, so if you have a few moments, please answer 3 questions. You'll receive a gift token for use in the Flight Service store.

View the full International Bulletin 18JAN2016

---

## Monday Briefing: Saudi Arabia, Bahrain ban

# flights from Iran, New US Visa Waiver Restrictions

Cynthia Claros  
22 March, 2016

INTERNATIONAL BULLETIN	ISSUED BY FLIGHT SERVICE BUREAU
	SITA HNLFSXH AKLFSXH AFTN KMCOXAAL
	EMAIL INTL.DESK@FSBUREAU.ORG



**Saudi Arabia and Bahrain ban flights from Iran** 11JAN Bahraini and Saudi Civil aviation have banned flights between Bahrain, Saudi Arabia and Iran. The Bahraini Civil Aviation Authority (BCAA) stated that it will work to resolve any disruptions as a result of the ban. Bahrain previously cut diplomatic relations with Iran, following the attack on the Saudi Embassy in Tehran.

**New US Visa Waiver Restrictions** 11JAN Several changes to the rules for the US Visa Waiver program are now in effect, restricting the moment of travelers having visited Iran, Iraq, Sudan, or Syria in the last 5 years. [Read more ...](#)

---

**NFFN/Fiji** A report released by the Disaster Management Office on 4 January 2016 stated that Cyclone Ula caused minor damage to Fiji. While the storm blew away iron roofs in Ono-i-Lau and Kabara islands, it did not cause significant structural damage or loss of life.

**SBxx/Brazil** Tourists from Australia, Canada, Japan and the United States will be eligible to travel to Brazil for the upcoming Olympics without a visa for up to 90 days for visits between 01JUN and 18SEP16, though no extensions will be available. Proof of Olympic attendance is not required for this visa waiver. Business travelers from these countries will still require business visas during this time. Eligible travelers should be sure to confirm the validity of their travel documents prior to their trips. After 18SEP, tourists from these countries will require tourist visas for entry.

**LFL/Lyon** Due to industrial strike affecting fuel providers at LFL (Lyon Airport). Aircraft Operators have been asked to tanker in enough fuel for a round trip. LFL Airport can also not be used as alternate until 12JAN.

**Cxxx/Canada** Nav Canada has issued AIC 3/16 advising of a pending change to the credit that may be taken at alternate aerodromes for lateral navigation/vertical navigation (LNAV/VNAV) minima, when the aircraft is certified for barometric LNAV/VNAV.

**KPHX/Phoenix** Possible arrival and departure delays are expected on 12JAN due to extra passenger volume the day after the Alabama and Clemson football game. The airport expects an extra 30,000 departing passengers that day, boosting the total number of passengers to 150,000. In addition to regularly scheduled flights, at least 14 charter flights will depart.

**Kxxx/Southern California** SpaceX has scheduled a launch for Jan. 17. This launch will take off from Vandenberg Air Force Base in California. Please check local NOTAMs with KZLA (SOCAL) and KZOA (Oakland Oceanic) for any airspace closures.

**Zxxx/China** Chinese officials stated that they will allow departing flights to transit via Taiwan. Aviation officials will allow flights departing from Chongqing, Nanchang and Kunming to transit through Taipei's Taoyuan International Airport (RCTP/TPE).

**Fxxx/Madagascar** On 7 January 2016, Malagasy health officials reported statistics in an ongoing outbreak of the bubonic plague. Reports indicate that 63 fatalities and a total of 174 cases have been recorded since August 2015. Madagascar first alerted the World Health Organization (WHO) to this outbreak in September. A previous outbreak in 2014, which lasted until early 2015, resulted in 335 cases and 79 fatalities.

**Dxxx/Nigeria** The Nigerian Civil Aviation Authority (NCAA) has lifted the suspension it recently imposed on Acorn Petroleum Limited from supplying aviation fuel to domestic and foreign airlines at airports in the country. NCAA had suspended Acorn and four other oil marketing companies from supplying aviation fuel to local and foreign airlines operating in the country.

**Vxxx/India** The Indian government has approved a Memorandum of Understanding on Civil Aviation between India and Singapore.

**View the full International Operations Bulletin 11JAN2016**

---

## **Shanwick/Gander: New NAT procedure - Confirm Assigned Route**

Cynthia Claros  
22 March, 2016



Coming soon to an FMS near you will be a new standard message from Oceanic ATC: “**Confirm Assigned Route**”.

If you’ve operated on the ‘half-tracks’ in the NAT recently, you’ll have seen this. So, what’s it all about?

**Short and simple:** with the half-tracks, the potential for Nav Errors are now (quite a lot, perhaps) higher than before. Waypoints are that bit more complicated, and 5030N 30W is a little too similar to 50N 30W.

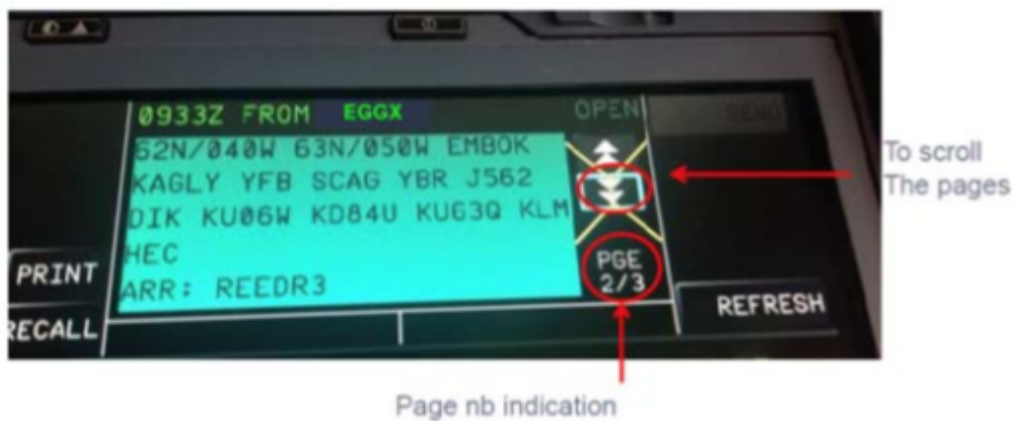
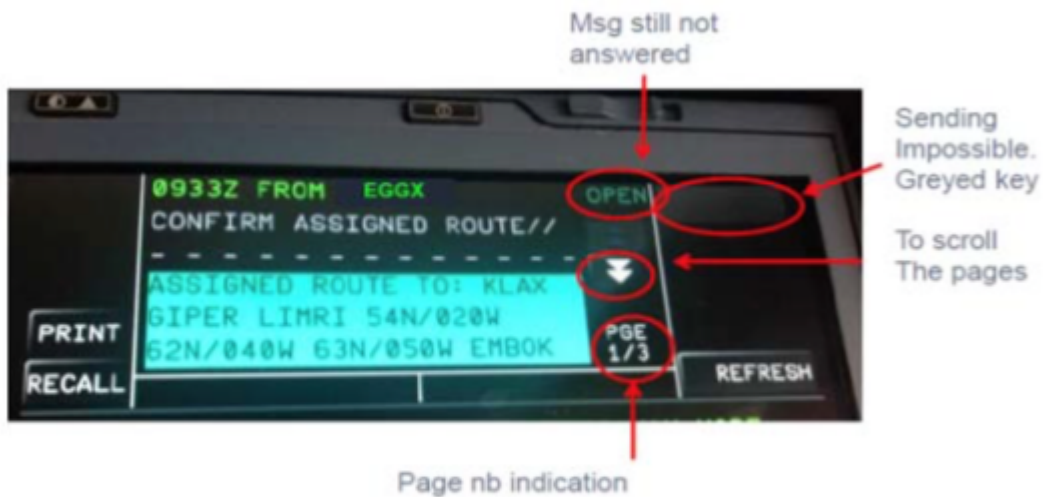
So, to prevent you reading back the clearance correctly and then screwing up the route in the FMS, Shanwick (and Gander from 01DEC16) will ask you via datalink “**What are you planning to fly?**” once you enter the Ocean.

All you have to do is ack the message, scroll through your route and check it looks OK, and send it back down to them. If it’s the same as your clearance, then that’s that. If not, or you don’t reply, you’ll get an additional telegram from Shanwick.

Each aircraft has a different FMS of course, so the good people at NATS have issued **AIC 071/16** to help you – it covers the A320-340, 350/380, and 75./76, 77. If you fly a business jet, one of those should be pretty similar to yours. And if you’re operating something a little older, keep the radio operators in Ballygirreen and Gander happy with a full position report.



FMS HWL



A350/A380







B757/B767



B777



Reference: Iceland AIC 12/16.

# January 2016 US Visa Waiver Changes

Declan Selleck  
22 March, 2016



### **When do these changes come in to effect?**

The “four countries” restriction is effective 20DEC2015; the passport requirement 01APR2016.

### **Who is prohibited from traveling under the Visa Waiver Program by the new law? Are there any exceptions or waivers from the restrictions?**

The new VWP travel restrictions apply to:

- Nationals of VWP countries who, since **01MAR2011**, have traveled to **Iran, Iraq, Sudan, Syria** or any other country of concern designated by the Department of Homeland Security; and
- Dual nationals of a VWP country and Iran, Iraq, Sudan, Syria or any other country of concern designated by the Department of Homeland Security.

If you have traveled to a country of concern since March 1, 2011, you are prohibited from traveling under the VWP.

If you are a dual national of a VWP country **and** Iran, Iraq, Sudan, Syria or any other country or area deemed to be of concern by the Secretary of Homeland Security, you are prohibited from traveling under the VWP. There is no exception to this prohibition.

If you are barred from the VWP travel and do not qualify for an exception or a waiver, you must obtain a B-1/B-2 visa at a U.S. consulate before traveling to the United States for business or tourism.

### **What are the new passport requirements for travel under the Visa Waiver Program? How do they differ from previous VWP requirements?**

Starting **01APR2016**, all VWP travelers (including infants and children) must present an e-Passport – i.e., a travel document that is machine-readable and contains an electronic chip – when traveling to the United States.

Most VWP travelers have been required to present an e-Passport when entering the United States for some time. However, some nationals of longtime VWP member countries whose passports were issued before



October 26, 2006, have been able to travel to the United States on the VWP even if they do not have an e-Passport.

After March 31, 2016, all VWP travelers must present an e-Passport. E-Passports contain an integrated computer chip that stores the passports holder's biographic data, a biometric identifier, a digital signature and a unique chip identification number. The data on the chip includes two lines of machine-readable data as well as facial recognition details. The chip can also be scanned to match the identity of the traveler to the passport.

These passport requirements apply only to travelers under the Visa Waiver Program. Foreign nationals who have a U.S. visitor visa or another type of U.S. nonimmigrant visa stamped in their passport are not required to comply with these revised passport requirements.

### **What is the Visa Waiver Program and who is eligible to participate?**

The Visa Waiver Program permits eligible citizens of designated countries to travel to the United States for up to 90 days for business or pleasure without first having to obtain a visitor visa at a U.S. consulate. In order to use the VWP, travelers must obtain Electronic System for Travel Authorization (ESTA) clearance.

Citizens of the following 38 countries are eligible to participate in the VWP: Andorra, Australia, Austria, Belgium, Brunei, Chile, the Czech Republic, Denmark, Estonia, Finland, France, Germany, Greece, Hungary, Iceland, Ireland, Italy, Japan, Latvia, Liechtenstein, Lithuania, Luxembourg, Malta, Monaco, Netherlands, New Zealand, Norway, Portugal, San Marino, Singapore, Slovakia, Slovenia, South Korea, Spain, Sweden, Switzerland, Taiwan, and the United Kingdom.

---

# **Thank you!**

Mark Zee  
22 March, 2016



Thank you — all received! Thank you very much for taking the time to send us your story on Dorian. If you requested it, we'll send you a copy of the report once complete, and tell you about the new Response Team.

### **Before you go ...**

You probably know someone else involved in Dorian Relief – we're especially keen to hear from pilots and other flight ops folks involved. Would you send them the link to this, so we get their story too?

Survey link: <https://ops.group/respond/dorian>

*If you like, copy and paste this into an email to a friend that was involved:*

---

#### **New email**

Hi,

I just completed some questions on Hurricane Dorian around the aviation relief efforts, and they are looking for more responses. You might like to help out ...

Here's the link:

<https://ops.group/respond/dorian>

Kind regards,

---

We're grateful for your help and input. If you have any questions, or need help – just email the OPSGROUP team.