

# Oshkosh 22': Special IFR Flight Procedures

Chris Shieff

1 June, 2022



It's that time of year again – Oshkosh 22' is just around the corner. The world-famous air show is happening this year from **July 25 - 31**.

And as you'd expect, it's going to be big. In fact, it will have the highest concentration of airplanes in the world. Over 10,000 of them to be precise, along with more than 700,000 fans.

To help with the influx of traffic, special air procedures have been published. They're effective from **July 21 - 31** and apply to several airports in the region, not just **KOSH/Oshkosh** itself.

You may not be headed in for the show, but if you are chartered to take people there (or anywhere near it), it's time to start planning.

At over thirty pages, the official doc is a solid read. To get you started, here's a bite-sized summary of the major points for **regular turbine IFR operators**.

## **Special Procedures - Managing the flow**

There are thirteen airports in the Oshkosh area that the generic procedures apply to. In a nutshell, if you're headed to one, you will need to take part in the IFR Reservation Program. Or in other words, if you're non-scheduled, you'll need a slot.

Big things to know for arrivals:

- They will become available at 17z on July 18, here.
- They won't be issued more than 72 hours in advance.
- You have to confirm your slot within 12-24 hours of your flight (or you'll lose it).
- You must include your final confirmation number in your flight plan.

**Ops tip:** When working out your ETA, they suggest adding 30 minutes for delays (along with fuel).

The good news is that things are a little easier for departures - only **KOSH/Oshkosh** itself requires a slot through the same process.



Don't forget parking - a slot doesn't guarantee a spot. All parking at nearby airports will be at the premium during the show.

### **Filing your flight plan**

A little common sense prevails here - file early. You can file an IFR plan up to 22 hours in advance. At seven of the Oshkosh area airports, only approved IFR routes in an out are allowed. For arrivals [click here](#), for departures [click here](#).

### **Picking up your IFR clearance**

If you're departing any airport within 600nm of KOSH (even if you're not headed near the show), it's a good idea to get your clearance on the ground to save on airborne delays.

Within 150nm, **airborne clearances will be no-bueno**, so don't try it. ATC won't issue them.

**Another ops tip:** Avoid plans with multiple stops. ATC advise it is better to file separate plans for each leg.

### **Airport Specific Procedures**

Three airports have their own specific procedures (in addition to the above). Let's take a look.

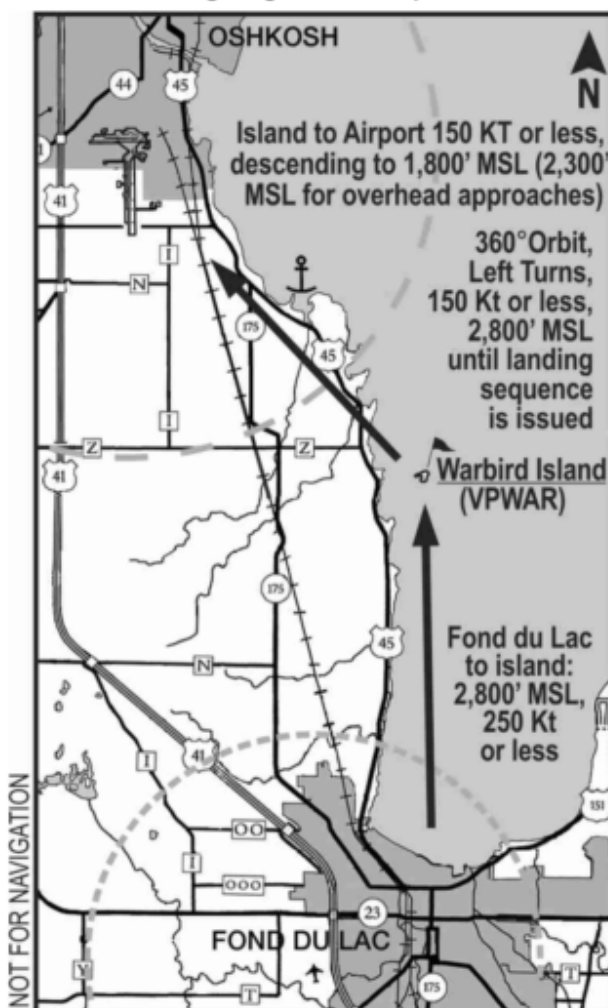
#### **KOSH/Oshkosh**

If you're headed into Oshkosh itself and the weather is good (ceiling 4,500'+, visibility > 5'), turbine aircraft are asked to cancel IFR at 60nm and transition to the arrival below.

# Turbine/Warbird Arrival

Restricted to aircraft types listed

- This procedure is restricted to high-performance turbojet, turboprop, and Warbird aircraft capable of cruising at 130 knots or greater. Slower Warbird aircraft shall use the VFR Arrival from the ATC designated Transition (pages 5-14).
  - The city of Fond du Lac is the entry point for all Turbine/Warbird arrivals. Monitor the AirVenture Arrival ATIS (125.9) for anticipated landing runways (see charts on pages 10-13).
  - Avoid the Fond du Lac County Airport (FLD) airspace. FLD has a temporary control tower from Saturday, July 23 until Sunday, July 31, 2022 (operating hours on page 21). FLD airspace is 3,300' MSL and below within 4 NM.
  - Aircraft weighing more than 12,500 pounds must advise ATC on initial contact.
  - All aircraft shall report arrival over the city of Fond du Lac and again at Warbird Island to Oshkosh Tower on the appropriate tower frequency:
    - **When RWY 36L/R is in use, report on 126.6**
    - **Otherwise report on 118.5**
- Examples: "Blue and yellow Wildcat, Fond du Lac"  
"White Citation, Warbird Island"
- Proceed from the city of Fond du Lac direct to Warbird Island (6 miles SE of OSH, along the west shore of Lake Winnebago). When 4 NM North of FLD, descend to maintain 2,800' MSL.
  - Pilots may be instructed to orbit the island until a landing sequence is issued. **Use caution; make left turns; and stay alert for other aircraft!**
  - When cleared at Warbird Island, proceed to the assigned runway as directed by ATC, reduce speed to 150 knots or less and begin descent to 1,800' MSL (2,300' MSL for overhead approaches). Pilots are cautioned to maintain VFR separation at all times.
  - If your landing clearance appears unsafe because of spacing, speed of preceding aircraft, or any other reason, go around! A new sequence will be issued.
  - Pilots may request a 360° overhead approach to RWY 36 L/R or RWY 27. Break altitude is 2,300' MSL. Expect a right break only.
  - ATC may initiate a 360° overhead approach to other runways as needed for spacing. Break altitude will be 2,300' MSL. Expect a north break for RWYs 9/27 and an east break for RWYs 18/36.
  - Under all circumstances, avoid the VFR arrivals area southwest of OSH.
  - Pilots of Warbird aircraft are encouraged to call Warbird Ground (123.9) when arriving at the Warbird area and also before starting engines for departure.



Make sure you grow eyes in the back of your head for other traffic, it's going to be busy.

When you land, you'll need a nice big sign to show where you'll be parking to show marshals outside of the left window. Unless you're staying for the show, it will likely be '**FBO**' for the Basler Ramp (assuming you have arranged this beforehand).

Chances are though, most non-scheduled charters won't be operating into KOSH/Oshkosh. Here are the next two closest options.

### **KFLD/Fond du Lac**

- Distance from Oshkosh: 14nm
- Longest runway: 5941' (1800m)
- Parking: Fond du Lac Skyport (920-922-6000)

The FBO is only open between the hours of 06:30 and 21:00LT.

The biggest gotcha is there will be a **temporary control tower** in place from July 23 - 31, operating between 07:00 and 20:30LT (closing a bit earlier on the last day).

You'll need to contact them at 10nm inbound. They're expecting things to be really busy to - so take fuel for holding. They also recommend you arrive before sunset for safety.

If the weather is good, expect to cancel IFR and fly a visual approach.

### **KATW/Appleton**

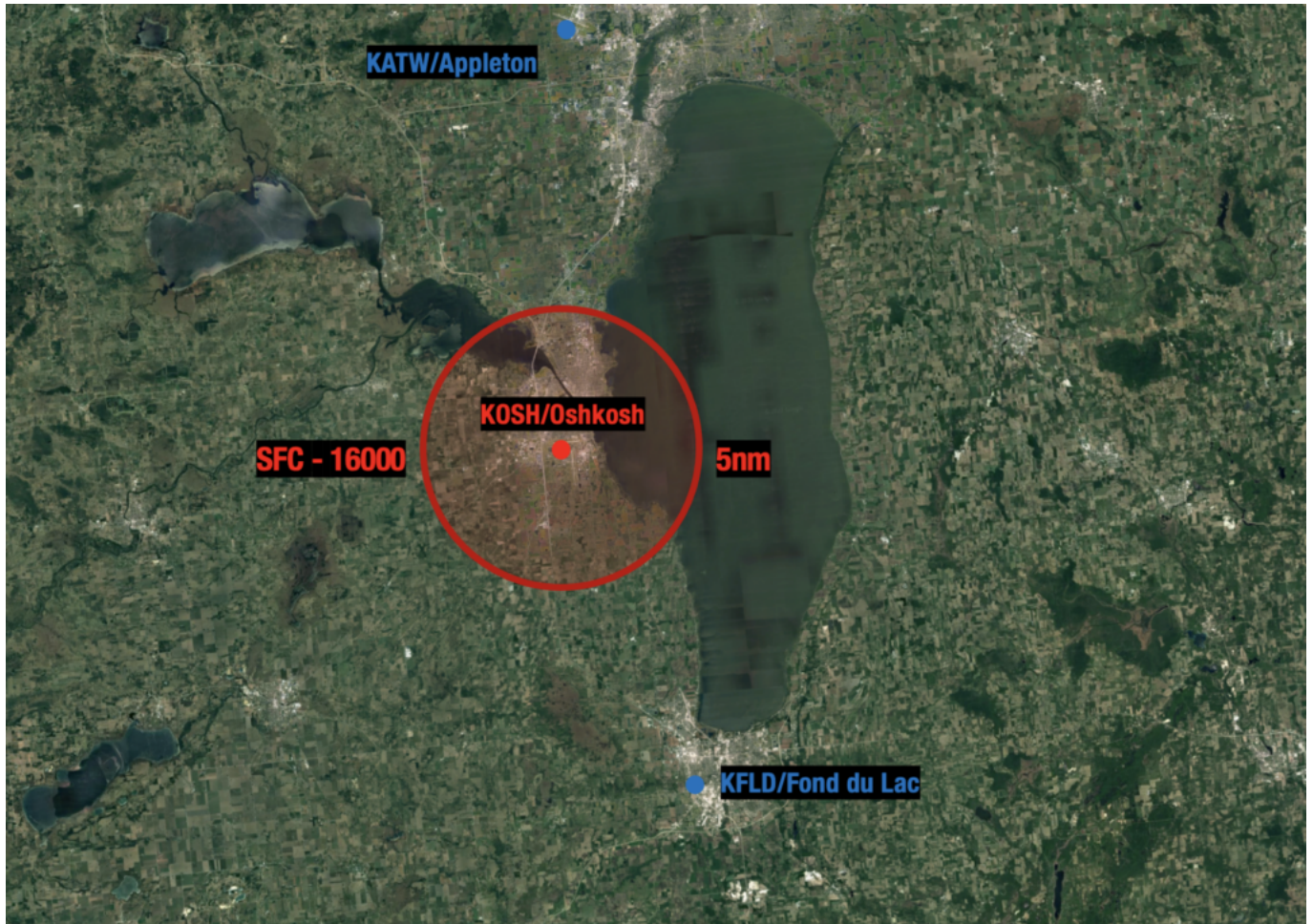
- Distance from Oshkosh: 17nm
- Longest runway: 8003' (2439m).
- Parking: Appleton Flight Center (920-738-3034)

The airport is controlled between 05:30 and 23:00 LT every day.

### **The Main Event Itself**

KOSH/Oshkosh will **closed to all non-air show traffic** during the actual displays.

The action will happen in a TFR within a 5nm radius of the airport up to 16,000.' It will be active each afternoon during the event dates, and on two evenings - July 27 and 30. The exact timings will be published here, during which time the airport will be closed.



The Oshkosh TFR will be in place during the actual airshows. KOSH will be closed during those times.

### **Need more help?**

The official notice is the place to start - it's lengthy, but it's written in plain language which we like.

If you're having difficulty reserving an IFR slot, contact the Airport Reservation Office at (540) 422-4246.

If your question is about something else, you can reach us on [news@ops.group](mailto:news@ops.group) and we'll do our best to help, or find the right person who can.