

# Major runway shutdowns ahead at KVNY/Van Nuys

David Mumford

1 December, 2025



KVNY/Van Nuys will shut 16R/34L for multiple 80-hour blocks plus recurring night closures through February 2026, so expect serious disruption to operations.

Here's what's currently planned:

## Van Nuys Cross Taxiways Reconstruction Project 80-Hour Closures with Follow-up Nightly Closures

November 2025 – February 2026 *(Third Revised Schedule – Jan. 14, 2025)*

From	To	Description
Nov. 9 <sup>th</sup> at 22:30 pm	Nov. 13 <sup>th</sup> at 06:00am	Full <b>80-Hour</b> closure of 16R-34L from Sunday night through Thursday morning
Nov. 16 <sup>th</sup> at 22:30 pm	Nov. 20 <sup>th</sup> at 06:00 am	Full <b>80-Hour</b> closure of 16R-34L from Sunday night through Thursday morning
Nov. 18 <sup>th</sup> at 22:30	Nov. 19 <sup>th</sup> at 06:00 am	One Nightly Closure of 16R-34L from Tuesday Night through Wednesday morning
Nov. 30 <sup>th</sup> at 22:30 pm	Dec. 4 <sup>th</sup> at 06:00 am	Full <b>80-Hour</b> closure of 16R-34L from Sunday night through Thursday morning
Dec. 7 <sup>th</sup> at 22:30 pm	Dec. 11 <sup>th</sup> at 06:00 am	Full <b>80-Hour</b> closure of 16R-34L from Sunday night through Thursday morning

Dec. 11 <sup>th</sup> at 22:30 pm	Dec. 12 <sup>th</sup> at 06:00 am	One Nightly closure of 16R-34L from Thursday night through Friday morning
Dec. 14 <sup>th</sup> at 22:30 pm	Dec. 19 <sup>th</sup> at 06:00 am	Five Nightly Closures (7.5 Hours each night) of 16R-34L: each night from 22:30 to 06:00.
Dec. 21 <sup>st</sup> at 22:30 pm	Dec. 22 <sup>nd</sup> at 06:00 am	One Nightly closure of 16R-34L from Sunday night through Monday morning
Dec. 22 <sup>nd</sup> at 22:30 pm	Dec. 23 <sup>rd</sup> at 06:00 am	One Nightly closure of 16R-34L from Monday night through Tuesday morning

**Dec. 23 through January 4<sup>th</sup>: No closures over the holiday period**

From	To	Description
Jan. 4 <sup>th</sup> at 22:30 pm	Jan. 8 <sup>th</sup> at 06:00am	Full <b>80-Hour</b> closure of 16R-34L from Sunday night through Thursday morning
Jan. 5 <sup>th</sup> at 22:30 pm	Jan. 9 <sup>th</sup> at 06:00 am	Full <b>80-Hour</b> closure of 16R-34L from <b>Monday</b> night through <b>Friday</b> morning
Jan. 11 <sup>th</sup> at 22:30 pm	Jan. 15 <sup>th</sup> at 06:00 am	Full <b>80-Hour</b> closure of 16R-34L from Sunday night through Thursday morning
Jan. 18 <sup>th</sup> at 22:30 pm	Jan. 22 <sup>nd</sup> at 06:00 pm	Full <b>92-Hour</b> closure of 16R-34L from Sunday night through Thursday evening
Jan. 25 <sup>th</sup> at 22:30 pm	Jan. 29 <sup>th</sup> at 06:00 am	Four Nightly Closures (7.5 Hours each night) of 16R-34L: each night from 22:30 to 06:00.
Feb. 1 <sup>st</sup> at 22:30 pm	Feb. 5 <sup>th</sup> at 06:00 am	Four Nightly Closures (7.5 Hours each night) of 16R-34L: each night from 22:30 to 06:00.

Those big 80-hour closure blocks are the ones to really watch out for. They start Sundays at 2230 and end Thursdays at 0600 local time, so the **runway is effectively unavailable all day Mon/Tue/Wed** during those periods. You can check the airport advisories for any changes to these planned times (due to weather), but the easiest place to view them is the calendar on the airport website here.

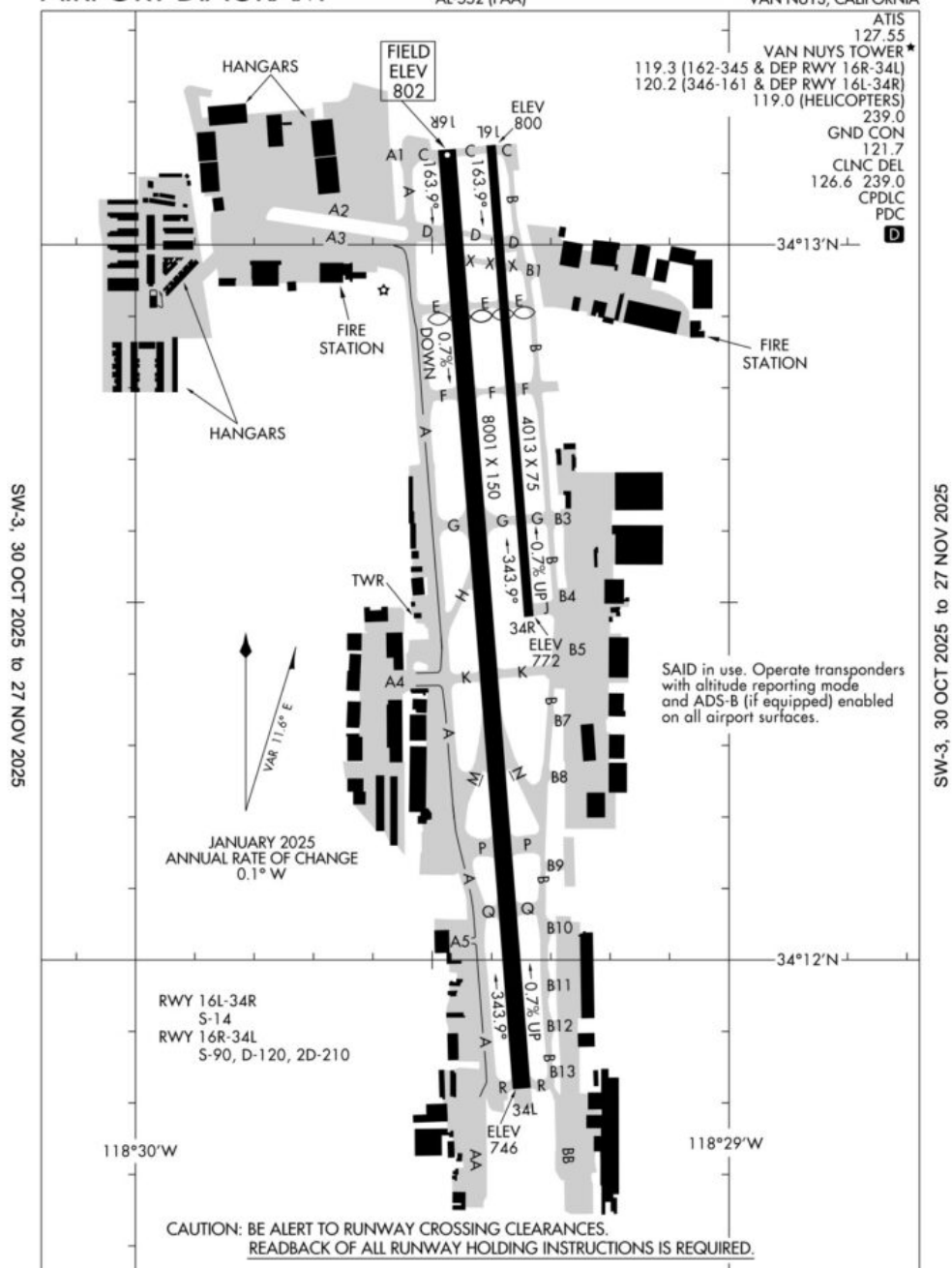
25163

## AIRPORT DIAGRAM

AL-552 (FAA)

VAN NUYS (VNY)

VAN NUYS, CALIFORNIA



## AIRPORT DIAGRAM

25163

VAN NUYS, CALIFORNIA

VAN NUYS (VNY)

Based on the Notams available right now, **the short runway 16L/34R has no closures planned.** But watch out here - it's only 4000ft long, is limited to a single wheel configuration with a max weight of about 14000 lbs, so it will not be an option for most BizAv aircraft during the closures.





In terms of where else to consider, **KBUR/Burbank** and **KLAX/Los Angeles** are likely to be the main two contenders. We checked with the local handlers at both – no closure or restrictions are planned, so these should hopefully stay fully usable during the KVNY closures. Contact deets for both:

### **KBUR/Burbank**

Hollywood Burbank Jet Center: [csr@hbjetcenter.com](mailto:csr@hbjetcenter.com)

Atlantic Aviation: [burfrontdesk@atlanticaviation.com](mailto:burfrontdesk@atlanticaviation.com)

### **KLAX/Los Angeles**

Signature Aviation: [LAXFBO@signatureaviation.com](mailto:LAXFBO@signatureaviation.com)

Atlantic Aviation: [laxfrontdesk@atlanticaviation.com](mailto:laxfrontdesk@atlanticaviation.com)