

Covid Catchup: 18 months of ops changes in one game

Mark Zee
7 July, 2021



Hi members,

I don't know if you're one of the many returning to international ops this summer, but quite a few of the group are.

The last 18 months have seen quite a lot of changes for international ops. If you're just jumping back into the cockpit after a prolonged absence, it would be good to know about them - right?



We thought the best way to communicate that summary was in a game!

So we made Covid Catchup. It's easy to play: follow the boxes, read a little, and then answer some quiz questions to see how you rate.

It's in PDF form so you can download it, print it out, or play it on your iPad (and feel free to share with you friends that might not be group members).

How to get the game?

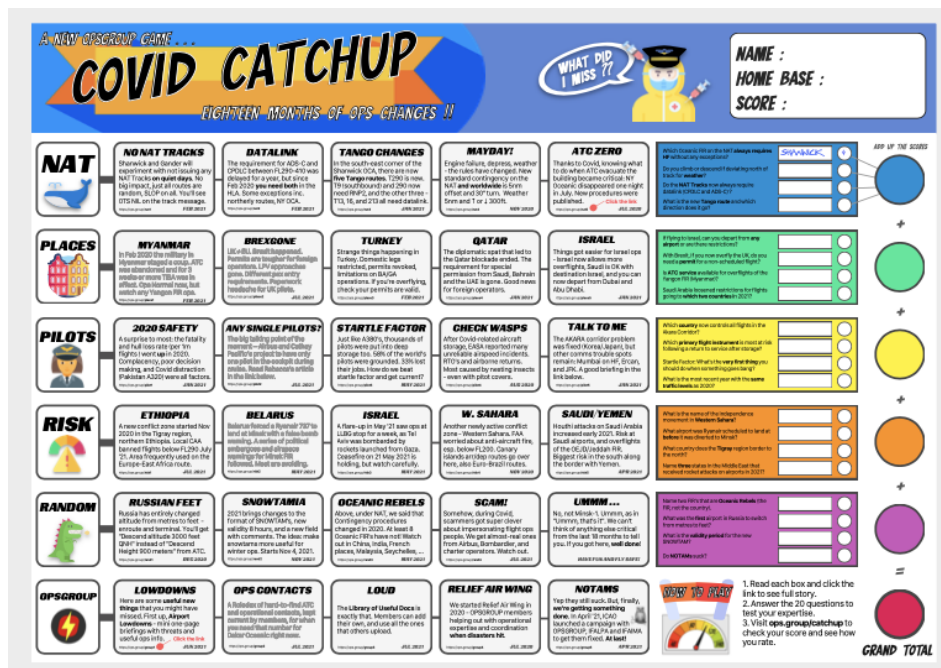
We're dropping it into OPSGROUP Slack this evening. Just go to the **#crewroom** channel and you'll see it there.

If you'd prefer to get the game by email instead, we can do that – just send a note to ops.team@ops.group.

Enjoy the game and let us know how you do! We're pretty confident that if you do well on it, you'll be up to speed on all the big changes since January 2020.

Cheers,
The O.G. Team.

How to play



1. Get the full game in **OPSGROUP Slack**
2. Print it out, or open the PDF on your iPad

NAT

NO NAT TRACKS

Shanwick and Gander will experiment with not issuing any NAT Tracks on **quiet days**. No big impact, just all routes are random, SLOP on all. You'll see OTS NIL on the track message.

<https://ops-group.net/1> **FEB 2021**

DATALINK

The requirement for ADS-C and CPDLC between FL290-410 was delayed for a year, but since Feb 2020 **you need both** in the HLA. Some exceptions inc. northerly routes, NY OCA.

<https://ops-group.net/2> **FEB 2021**

TANGO CHANGES

In the south-east corner of the Shanwick OCA, there are now **five Tango routes**. T290 is new. T9 (southbound) and 290 now need RNP2, and the other three - T13, 16, and 213 all need datalink.

<https://ops-group.net/3> **JAN 2021**

3. Each box has a little nugget of operational change. if you don't know about it, click the link for the full article. The date is when the change happened.

Which Oceanic FIR on the NAT always requires HF without any exceptions?

Do you climb or descend if deviating north of track for **weather**?

Do the **NAT Tracks** now always require datalink (CPDLC and ADS-C)?

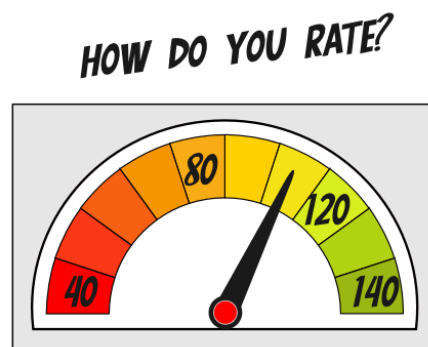
What is the new **Tango route** and which direction does it go?

SHANWICK

4

POINTS (SEE BELOW)

4. Answer the questions
5. Finally, check your answers and see what points you got for each correct one (all are different!)



Don't forget to share you how did! You can humble-brag your high score claims in the **#crewroom** channel 📺