

Midweek Briefing: Where is Zika, Elevated North Korea Risk

Cynthia Claros
24 August, 2016

**INTERNATIONAL
BULLETIN**

ISSUED BY FLIGHT SERVICE BUREAU
SITA HNLFSXH AKLFSXH AFTN KMCOXAAL
EMAIL INTL.DESK@FSBUREAU.ORG



Where is Zika? 24AUG With the again-increasing levels of Zika infection worldwide, this updated map will be useful to operators. Check Zika Map.

North Korean Risk Elevated 24AUG We've published an updated **Unsafe Airspace Summary** today, which elevates North Korea to Level 2 in our warning list. In 2016, there have been increased instances of medium-range ballistic missile (MRBM) launches without prior warning. Read the article

DIAP/Ivory Coast issued a Notam last Friday advising of 'serious risks to safety' when operating through the Tripoli FIR. Not many operators are entering this airspace, but it's unusual for a non-adjointing country to issue advice like this, so we'll mention it.

SPZO/Cuzco, Peru is busy at the moment; non-scheduled and GA flights cannot park overnight, and there are Traffic Management procedures inbound. Don't forget if operating to Cuzco that special crew training is required.

WADD/Bali Authorities have stepped up security measures at all the entry points on the island, following recent reports of an alleged plot to carry out attacks.

HKNW/Nairobi Wilson is operating normally again after a Police helicopter crashed on take off on Monday, near the control tower.

LLZZ/Israel Israeli aircraft attacked mortar positions in southwestern Syria near the border with the Golan Heights on 22AUG. The airstrikes were apparently in response to mortar fire from the Syrian side of the border.

RJAA/Tokyo Narita is open again after the passage of Typhoon Mindulle. The control tower at Narita was

evacuated due to strong winds, the first time this has happened since the 9.0 earthquake in March 2011.

WIZZ/Indonesia has warned its neighbours that haze from forest fires is beginning to cross the Malacca Strait. In 2015 the smog affected Malaysia, Singapore, and Thailand, causing disruptions throughout the region, closing airports and delaying flights.

EDDT/Berlin Tegel Aircraft larger than ICAO Code D, and parking longer than 3 hours, approval of Traffic Management is required. Contact verkehrsplanung-txl@berlin-airport.de, in place until 30Sep.

VEZZ/India Couple of new ICAO codes here, VASD is Shirdi Airport, and VEPY is Pakyong Airport. AFTN connections not yet set up.

LBPD/Plovdiv Reports of lasers directed at departing aircraft. Notify ATC with any details if experienced.

FOZZ/Gabon If you're arriving into Libreville International Airport you can submit an online visa application at least 72 hours before the date of travel and collect your visa on arrival

BGTL/Thule Updated hours for Radar service – 1100-1900Z Mon-Fri only.

NTAA/Tahiti has a bunch of night-time closures until 03SEP; this is an isolated aerodrome so check carefully in advance of ops.

NWWW/Noumea has ongoing staff shortages in ATC, and therefore interruptions in opening hours for the airport. Check before operating.

VDZZ/Cambodia has introduced a new tourism and business multiple-entry visa, which will allow foreigners to stay in the country for up to three years. The visa will become available on 1 September. The current visa grants visitors a 14-to-31-day stay.

LCLK/Larnaca New ATC Controllers being trained (under supervision)—be nice to them!

FMMM/Antananarivo has a new disinsection procedure for flights arriving from Mauritius; also, all flights from Mauritius must operate to FMMM first before other airports in Madagascar.

HCSM/Mogadishu Due to HF Difficulties, all aircraft in Mogadishu FIR with Satcom are requested to contact Mogadishu FIC on Satcom. Inmarsat 46601, phones +251-20-762274 or +254-20-2365679.

View the full International Bulletin 24AUG2016

Midweek Briefing 10AUG: EASA Cockpit Rules, Ukraine extends Russia Ban

Cynthia Claros
24 August, 2016

INTERNATIONAL BULLETIN

ISSUED BY FLIGHT SERVICE BUREAU

SITA HNLFSXH AKLFSXH AFTN KMCOXAAL

EMAIL INTL.DESK@FSBUREAU.ORG



EASA: New Cockpit Rules 10AUG EASA has published a new SIB with guidance for operators on, well, how best to arrange the swap of *pilot-taking-a-pee* and *flight-attendant-now-up-front* ... Read the article

Ukraine extends Russia ban 10AUG Ukraine has extended the ban on Russian registered operators overflying or landing, until November 10th, 2016. In an operational notice.. Read the article

UZZZ/The Moscow Area will get busy between 26AUG and 04SEP (we're not entirely sure why), but ... The Main Air Traffic Management Centre (MATMC) has issued notice that there will be increased regulation for flights to UUWW, UUDD, and UUEE. Permission to depart **will expire 30 mins after planned off blocks time**, after which the Operator (that's you) must call MATMC for a completely new permit.

MWCR/Cayman recorded its first local transmission of the Zika virus on 08AUG. Several other people on the Cayman Islands have reported symptoms of the virus; however, authorities stated that in these cases the patients contracted Zika during travel abroad.

MKJK/Kingston, Jamaica is carrying out work on its Comms lines until the end of the week, and is expecting to lose some Flight Plans. The outage is 0415-1100Z daily. If you are operating to Jamaica, or through the FIR, it's worth sending your FPL early, and not during that time. Maybe send it a few times to be sure, should minimise delays due to missing FPL's.

VIZZ/India Independence Day on 15AUG. Multiple restrictions. No overflights within 150nm of Delhi. VIDP/Delhi will not allow non-scheduled flights 0030-0430Z, and 1030-1330Z. Check with your handler for specific restrictions on 15AUG.

LIRA/Rome Ciampino will be completely closed from 14-29OCT for runway maintenance and upgrades. According to CIA, maintenance work will be carried out on a 24/7 basis on parts of runway 15/33, at various junctions and taxiways.

EVVA/Ventspils is closed for the week from today, due to repairs to the main runway. One of the three main airports in Latvia, it reopens on 15AUG.

GUCY/Gbessia, Guinea Opposition leaders have announced the postponement of opposition demonstrations planned for 10-16AUG. Marchers will reportedly demonstrate on the Autoroute Fidèle

Castro, between Aéroport International de Gbélia (GUCY/CKY) and the Palais du Peuple. The demonstration was originally slated to occur on 4 August but was later postponed until 10 August.

WIZZ/Indonesia Travel advice updated: Political tensions have given rise to occasional mass demonstrations in cities in Papua; take extra care and seek local advice on your travel plans.

SOCA/Cayenne FIR has broken its SITA system and has no CPDLC or ADS-C until, they think, at least 14AUG. Revert to HF and use 8855/5526; failing that try 3023.

RJZZ/Japan On 08AUG, Japanese military officials placed the country's armed forces on alert for the potential of a North Korean missile launch. According to an official statement, the Japanese military will be ready to strike any North Korean missile that threatens Japan. Because some North Korean missile tests are difficult to detect, the current state of alert will last for three months. Previously, Japanese defense officials issued a series of temporary orders in response to imminent North Korean missile launches.

LWKS/Skopje Flooding on 6-7AUG2016 in Skopje and neighbouring areas has resulted in over 20 deaths. Some roads, including part of the Skopje ring-road, are closed. Alternative routes are available, but traffic may be slow moving. You should travel with extreme care.

LTZZ/Turkey Per new dictat from the DGAC in Turkey, all Ambulance flights entering Turkish airspace are to report "ACTIVE AMBULANCE FLIGHT" on first contact with Turkish ATC.

DIZZ/Cote D'Ivoire Effective 15SEP2016 Ivory Coast will withdraw the following HF frequencies: BOUAKE 5710KHz, 1578KHz; DALOA 5701KHz, KHOROGO 6673KHz; Man 5710.5 KHz; ODIENNE 6673 KHz; SAN PEDRO 6012KHz

EDDV/Hannover has special runway configurations on 14AUG due to (yet another) bomb from WW2 being removed. Between 1100-1400Z all approaches to 27L/09R are suspended.

VVZZ/Hanoi ACC reports that a lot of flights operating through the Hanoi ACC area of responsibility have not been submitting flight plan messages to VVHNZRZX or VVHNZQZX. In order to avoid missing / delay of FPL messages, copy these AFTN addresses when submitting your FPL's.

EGZZ/United Kingdom 8AUG Rail staff in southern England, including London, began a five-day strike, which will reduce rail services by 40 percent. Travellers should expect major delays and large-scale traffic disruptions

BGSF/Kangerlussuaq Daily Closures between 09AUG and 30AUG for runway work. Double check NOTAMR A0295/16 for complete list of timings. Only Medivac, Search and Rescue and PPR confirmed operations allowed.

KTEB/Teterboro Landing Fees here are to increase by about 25% on September 1st. Comments regarding the fee changes can be submitted to The Port Authority of New York and New Jersey, and must be received by 10AUG2016.

Measles Myanmar/Taiwan On August 6th health officials confirmed a measles outbreak in the Sagaing region, a mountainous area located in northern Myanmar, bordering eastern India. We have also received report from Taiwanese health officials confirming a link between two cases of measles and Taipei's Songshan International Airport (RCSS/TSA). The two cases, which were first detected on 15JUL, involved an airline ground crew worker and a passenger who traveled to the airport.

SECU/Cuenca, Ecuador Operations at Cuenca airport will be suspended from mid-August 2016 for 3 weeks to 1 month due to the need for additional runway works.

OMDB/United Arab Emirates On 04AUG both runways at Dubai International Airport (OMDB/DXB) resumed full operations following the 03AUG 777 accident. Expect delays and some cancellations as the

airport is still struggling to catch up.

UTZZ/Turkmenistan and **UAZZ/Kazakhstan** On 04AUG Turkmenistan temporarily closed its border with Kazakhstan, citing security concerns. Officials stated that the closure will last for five days. Turkmenistan instituted a similar border closing on 20JUL. Authorities did not release details on the purported security concerns that prompted 04AUG closure.

UZZZ/Russia 03AUG Polish officials stated that they did not have a specific date to reopen visa-free border traffic between Poland and the Russian enclave of Kaliningrad. Security concerns associated with the NATO Summit and Roman Catholic Church's World Youth Day led officials to temporarily restart border checks at Poland's borders. Residents of border areas, however, will be able to travel across the border for cultural, social or family reasons.

UNKL/Yemelyanovo Runway11/29 is closed for all types of aircraft THU 0600-0700, WED FRI 0610-0710, MON TUE SAT SUN 0500-0700, 01SEP until 29OCT

View the full International Bulletin 10AUG2016

Midweek Briefing 03AUG: TSA/eAPIS increase in US fines, Vanuatu Runway concerns

Cynthia Claros
24 August, 2016

INTERNATIONAL BULLETIN	ISSUED BY FLIGHT SERVICE BUREAU
	SITA HNLFSXH AKLFSXH AFTN KMCXAAL EMAIL INTL.DESK@FSBUREAU.ORG



TSA/eAPIS increase in US fines 03AUG Fines and penalties for getting your CBP Arrival/Departure manifest wrong will increase from 01AUG. That means, screw up the eAPIS and you are looking at a potential fine of \$1,312. Read the article.

Vanuatu Runway concerns 03AUG Following interim repairs to the runway in Port Vila (NWWW/VLI) earlier

this year, concerns have been raised once again about the condition of the runway, with diversions on Monday. Read the article.

LFPZ/Paris Airports Couple of upgrades in progress, LFPO has 06/24 closed until 29AUG, and LFPG is installing a new ILS until 03OCT; both will cause some delays.

YZZZ/Australia The Australian Border Force have announced a strike for Friday, 12 August. This marks a resumption of Industrial Action in Australia after a 3 month 'ceasefire' was agreed. The strike period is 24 hours, precise impact not yet clear, but AQIS/Biosecurity/Quarantine will also take part to some degree.

OMDB/Dubai is reopening with a single runway following a full airport closure early on 03AUG due to 777 crash.

UIII/Irkutsk has no air starter available for large aircraft until the end of August. Irkutsk is a common enroute diversion airport.

ZKZZ/North Korea is back in action with the missile launches again, on 03AUG they fired two ballistic missiles, one of which landed in Japanese waters inside the country's economic exclusion zone. Another missile reportedly exploded immediately after the launch. The missiles were fired at 2250 UTC on 2 August from a region southwest of the North Korean capital city of Pyongyang.

MZZZ/Caribbean Tropical Storm Earl, multiple weather warnings for Jamaica, Caymans, Belize, Guatemala, Mexico.

VABB/Mumbai continues their Continuous Descent Approach trials in the TMA. Interestingly, part of the procedure calls for pilots to call in on 121.9 after landing and report the total amount of fuel saved (how do you work that out?), and then send a detailed brief by email to cdomumbai@aai.aero. We forecast a relatively empty inbox.

AGGH/Honiara has some surface damage on the International Apron, taxi slowly.

SBZZ/Brazil On 02AUG, the mayor of Rio de Janeiro declared 4 August a new public holiday for the Olympic Games. The extra holiday comes after the mayor has already designated 5, 18 and 22 August as public holidays in Rio de Janeiro, and after the city experienced severe traffic congestion with the implementation of Olympic-designated lanes. On 1 August, the Olympic tracks caused more than 60 mi/100 km of traffic jams, with the worst traffic taking place on the Linha Amarela.

DZZZ/Lome UTA Following changes last year to the airspace over Benin and Togo (the two long thin countries squeezed between Ghana and Nigeria) – there's still some confusion over who does what. In simple: Low Level (FL240 and below) is controlled by Cotonou Approach. High Level (FL250 and above) is controlled by Lome ACC.

EGGW/London Luton will close overnight weekends in November for some big repair work.

HLLL/Tripoli FIR Airstrikes this week by the USAF

LHPP/Pecs has no Jet A1 at the moment, back on 05AUG.

HEZZ/Egypt On 01AUG, reports announced that a semi-private company would take over responsibility for passenger and luggage screening at Sharm el-Sheikh International Airport (HESH/SSH). The same company, which is a joint public-private entity, will take over security at Terminal 2 of Cairo International Airport (HECA/CAI) beginning in October 2016 when the terminal is scheduled to reopen. The company will later take over screening procedures at Hurghada (HEGN/HRG), Borg el-Arab (HEBA/HBE), Marsa Alam

(HEMA/RMF), Aswan (HESN/ASW) and Luxor (HELX/LXR) airports. Egyptian police will continue to be responsible for perimeter security around Egyptian airports, including the terminal and the tarmac.

LOWS/Salzburg starts a multilateration (MLAT) trial on 05SEP. Keep your Mode S on, they ask.

SBBZ/Brazil Olympic Games kick off in a few days, if you are operating to Brazil read through the current NOTAMS carefully, there are a bunch of flow restrictions, special routes, and procedures.

FABL/Bloemfontein is carrying out major works during August. Diversions not accepted. Jet A1 is supplied by bowser during this time, and not hydrant as this is also being worked on.

LTZZ/Turkey - post Coup. As of 01AUG, the situation in Turkey continues to stabilize, as the government continues to step up security measures and conduct operations to detain alleged coup plotters. Turkey remains under a state of emergency, which allows the government to drastically restrict civil liberties, and will likely remain so for the next three months. Raids and security operations are continuing throughout the country. Travellers should note that Turkish authorities have reportedly been conducting ID checks in the busier areas of Istanbul. Demonstrations have continued over the past several days. While the threat of violence remains a concern at demonstrations throughout Turkey, most have been conducted peacefully. Travellers should nevertheless take care to avoid such gatherings as a precaution, because violence can occur with little notice. Additionally, terrorists have targeted major demonstrations in the past.

FLFI/Lusaka ACC have called out some AFTN addressing issues, if you are operating to land in Zambia, then file to FLKKZAZX and FLHNZAZX respectively. OMMM/Muscat ACC has a radar-less day on 18th August, 0600-1700Z. Turn that TCAS up.

WADL/Lombok, Bali has reopened after a closure on Monday 01AUG due to the eruption of Mt. Rinjani. The last closure was in OCT2015.

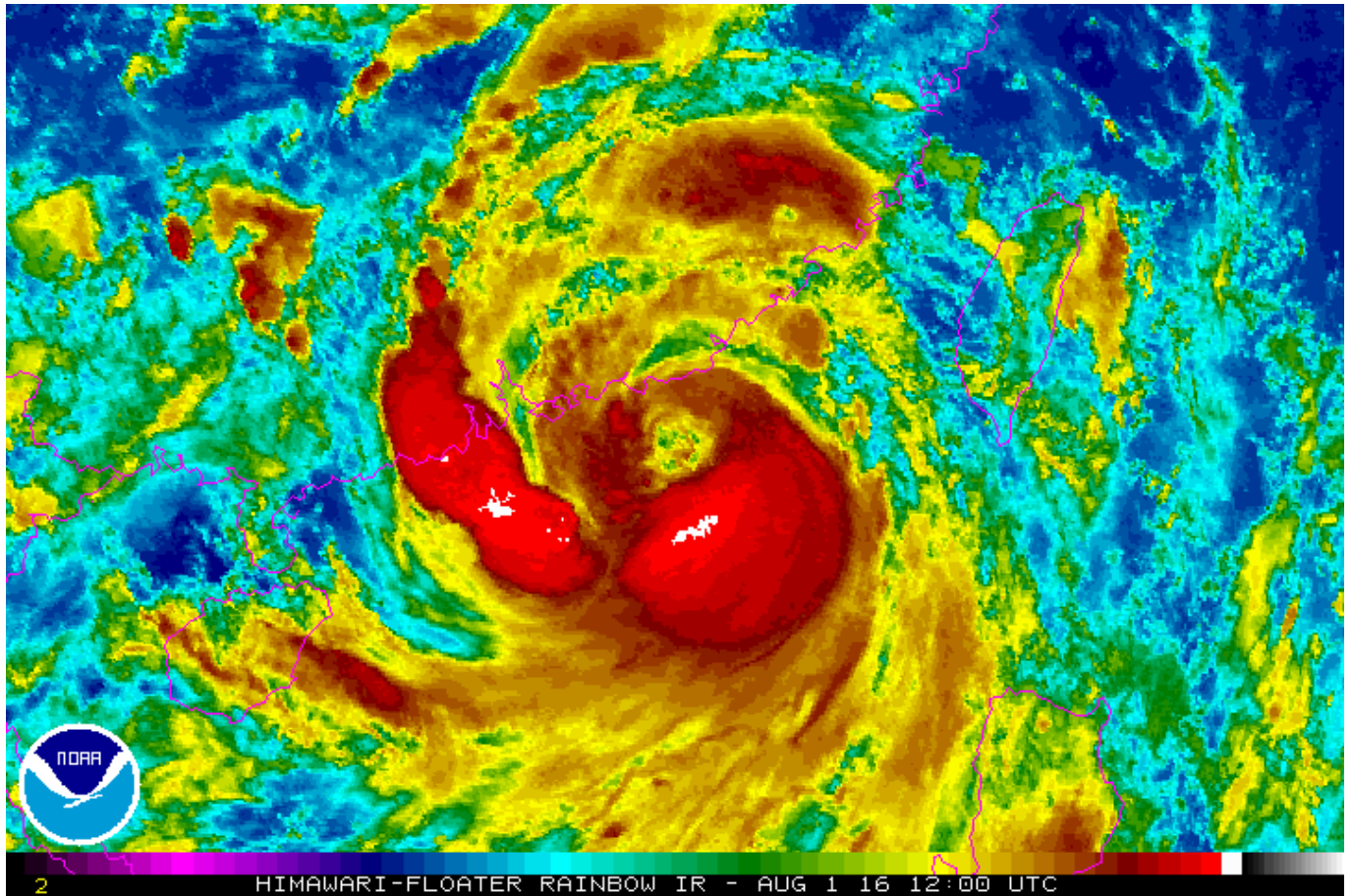
View the full International Bulletin 03AUG2016

Typhoon Nida - or is it the End of the World?

Declan Selleck
24 August, 2016

Typhoon Nida is enroute to Hong Kong, and will make landfall early on Tuesday morning. Now, we know that The Weather Channel and other mass media outlets enjoy exaggerating the picture somewhat, but the below NOAA graphic seems disproportionate as well.

With forecast average winds of around **40 knots** (that's a wet Wednesday in Ireland), and maximum maybe 70 knots - the impending doom depicted in the graphic below seems overstated. Has NOAA fallen victim to sensationalism? We wonder.



Midweek Briefing 27JUL: Iceland Strike Over, Brazil Olympic Ops Update

Cynthia Claros
24 August, 2016

INTERNATIONAL BULLETIN

ISSUED BY FLIGHT SERVICE BUREAU

SITA HNLFSXH AKLFSXH AFTN KMCOXAAL

EMAIL INTL.DESK@FSBUREAU.ORG



Iceland Strike Over 27JUL It's been promised a few times over the last few months but then closures continued – but what we can tell you is that: There was an agreement on July 18, that appears to be holding. Read the article.

Brazil Olympic Ops Update 27JUL The opening ceremony of the 2016 Olympics in Brazil is on 5AUG, in Rio de Janeiro. There are a ton of airspace restrictions, slot controlled airports, and changes from 19JUL-23SEP. Here is a summary.

LRBB/Bucharest FIR Crews have experienced several 'fake' calls on 121.5 within the Bucharest ACC airspace. No reports of control instructions being issued, but operators should be aware of the situation.

SKZZ/Colombia On 25 July, the Colombian health ministry declared the Zika epidemic to be over in the country. The epidemic began in September 2015 and peaked in March of this year. A total of approximately 100,000 Colombians were infected. While authorities believe outbreaks will continue, the number of cases reported is expected to decline.

LTBA/Istanbul has issued a long list of restrictions to discourage additional flights from operating to LTBA. New requests for charter flights are denied. LTBA cannot be carried as an alternate on your FPL.

TNCC/Curacao has daily work on the main runway throughout August. Some closures and shortened lengths. Check for latest with Airport operations on CAP OPS(+5999) 8391030/31/32.

To view the full International Bulletin 27JUL2016 Join OPSGROUP

Join OPSGROUP

US Customs and TSA fines higher

Declan Selleck
24 August, 2016



From August 1, fines and penalties for getting your CBP Arrival/Departure manifest wrong will increase. That means, screw up the eAPIS and you are looking at a fine of **\$1,312** instead of \$1,100.

Similarly, the fee for non-compliance with landing requirements at designated ports of entry for aircraft transporting aliens (yes, they still use that word) was \$3,200, and the penalty will now be **\$3,563**.

Penalties for certain Transportation Security Administration (TSA) violations have also increased, from \$10,000 to **\$12,865**.

As usual there is an original source document published in Russian, available here:
<https://www.gpo.gov/fdsys/pkg/FR-2016-07-01/pdf/2016-15673.pdf>

Midweek Briefing 20JUL: Manila Runway Damage, Africa Hajj Routes Take Effect

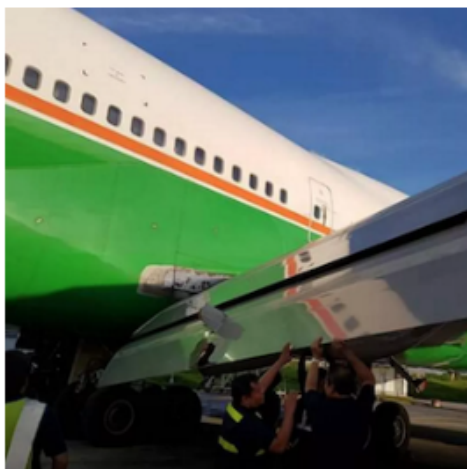
Cynthia Claros
24 August, 2016

INTERNATIONAL BULLETIN

ISSUED BY FLIGHT SERVICE BUREAU

SITA HNLFSXH AKLFSXH AFTN KMCOXAAL

EMAIL INTL.DESK@FSBUREAU.ORG



Runway damage at Manila 20JUL The main runway at RPLL/Manila, RWY 06/24, was closed on Monday 18JUL after heavy rain caused large chunks of asphalt to disintegrate. [Read the article.](#)

Africa Hajj routes take effect Starting tomorrow, the Africa Hajj routes for 2016 will take effect in the Algiers, Accra, Brazzaville, Dakar, Kano, Khartoum, N'Djamena, Niamey, Roberts, and Tripoli FIR's. [Read the article.](#)

LTZZ/Turkey The FAA has cancelled KICZ Notam A0015/16, thereby lifting all the restrictions that were put in place on Friday night last. There are now no restrictions on US operators or FAA licensed crews operating to Turkey. [Read full article](#)

LIZZ/Italy The Italian ATC Strike that we've been listing for the last few weeks is now confirmed for Saturday 23JUL. The times vary a little for each unit - AIS and MET are out for the day, 0800-1600Z, other units are similar but some are just 1100-1500Z. As with previous strikes, overflights are unaffected, as are international arrivals. Some international departures are approved for exemption. If you are planning a flight to Italy on Saturday, expect some disruption, and check with handler/local airport in advance for specific situation for your flight.

GUZZ/Guinea has updated contact information for overflight and landing permit requests through the Air Navigation Agency (ANA) of Guinea. Primary email is now ana-dg@ana-guinee.com, and we suggest to copy diante223@yahoo.fr. Telephone is +224 622 68 44 52

LBPD/Plovdiv has fuel issues. If you need a large uplift, contact them in advance to confirm availability: operations@plovdivairport.com, or SITA PDVAPXH.

VTBB/Bangkok have an agreement with the Singapore ATFMU/Flow management unit. If operating BKK-SIN on a Saturday, then you'll get a CTOT and must contact Bangkok ground/clearance 20 mins in advance to confirm you can make it.

To view the full International Bulletin 20JUL2016 Join OPSGROUP

Runway Damage at Manila

Declan Selleck
24 August, 2016



The main runway at RPLL/Manila, RWY 06/24, was closed on Monday 18JUL after heavy rain caused large chunks of asphalt to disintegrate. One of the last aircraft to land, shown below, suffered damage to an inboard flap section.

At least 10 flights diverted to Clark International Airport (RPLC/CRK), 50nm northwest of the city.

The runway was tentatively reopened on Tuesday, but consideration to future similar issues should be given, if further rain occurs.



Midweek Briefing 13JUL: South Sudan off limits, New Zealand airport strike off

Cynthia Claros
24 August, 2016

**INTERNATIONAL
BULLETIN**

ISSUED BY FLIGHT SERVICE BUREAU
SITA HNLFSXH AKLFSXH AFTN KMCOXAAL
EMAIL INTL.DESK@FSBUREAU.ORG



South Sudan off limits 13JUL The security situation in Juba, and South Sudan, has deteriorated in the last week, with HSSJ/JUB becoming off limits due to fighting. [Read the article.](#)

New Zealand airport strike off 13JUL A planned strike by Aviation Security across airports in New Zealand, which would have led to wide scale disruption, has been called off at the last minute. [Read the article.](#)

BGBW/Narsarsuaq Current hours are Monday to Saturday 1000-1900Z. If you want to plan a visit outside these hours, or even use BGBW as an alternate, get permission from bgbw@mit.gl in advance. There will be additional costs, especially heavy on a Sunday.

SBZZ/Brazil is the latest country to wield the threat of shooting down aircraft. Last month we reported on the same language from Sudan, in reference to overflight permits. Brazil's firm stance is in relation to the Olympic Games, and says that unidentified aircraft that violate the protected airspace around facilities of the Olympic Games in Rio de Janeiro. "We are not playing," said Defence Minister Raul Jungmann. This is more of concern to a lost C172 than commercial flights (unlike Sudan, which is the reverse), but worth being aware of.

EGPZ/Poland has effectively dispensed with the Schengen agreement for now, expect full border controls at all international airports (ie. Passport check, Gendec).

EGPZ/Scottish FIR The military are carrying out some GPS jamming trials over the ocean from 12-29JUL. If you're operating in the region of Benbecula VOR, especially west of it, be aware that your GPS might

stop working.

OAKX/Kabul Aircraft in the eastern sections of the Kabul FIR can expect some radio issues, as a comm unit (VSAT at Ghanzi) is out of action. The advice from ATC in Afghanistan is to keep trying the assigned frequency until within range of a different transmitter; in the meantime, a bit of SLOP, IFBP and TCAS should keep you out of trouble. See full article.

MKZZ/Jamaica Significant increase in the number of confirmed cases of Dengue fever in Jamaica during the first half of 2016. Dengue fever is endemic to Latin America and the Caribbean and can occur throughout the year.

ENZZ/Norway FIR Plans are afoot to raise the transition altitude to 18,000ft. It's an age old question, why does Europe have different TA's, and the US has just one? Together with surrounding countries, and the Irish FAB, this looks to be changing – but it may take a little while. See Norway AIC 7/16.

YBBB/Brisbane FIR (and Melbourne) will be updating their software on the night of 20JUL, with a hefty 6 hour outage of CPDLC and all the other good stuff.

OAMS/Mazar-E-Sharif Fuel payment is now only accepted in cash.

NZZZ/New Zealand A planned strike by two airport workers' unions and New Zealand's Aviation Security Service (Avsec) will now not go ahead. The unions sought increases in compensation, and negotiations on their demands will take place in the coming weeks. Read the article

EYPH/Paluknys is a new location indicator for the airport in Lithuania.

ZBDS/Edros - Ejn Horo, China will open to foreign flights this month. We did battle with AIP China for 30 mins to get further info but lost the fight. If you know more, tell us and we'll share.

HSZZ/South Sudan The ceasefire announced on 11 July is holding. Juba International Airport (HSSJ/JUB) is open to charter operations; however, commercial flights have yet to resume. U.S. government aircraft evacuated personnel on 12 July; however, a security message issued by the embassy later in the day advised U.S. citizens to continue to shelter in place and not attempt to travel to the airport. Meanwhile, other countries, such as Japan, Uganda, and Germany plan to send military aircraft to evacuate their nationals.

SEZZ/Ecuador A large earthquake (6.4) struck on 10JUL just east of Muisne, on the northwest coast of Ecuador. The quake had a shallow depth and followed 10 minutes after another earthquake that had a magnitude of 5.9. Although strong tremors were reported in Esmeralda and Quito, there were no immediate reports of damage. The Pacific Tsunami Warning Center did not issue a tsunami warning following the quake.

UZZZ/Mt. Klyuchevskoy, Russia continues to produce ash that extends up to 25,000 feet. Movement is towards the east at 10 knots.

PZZZ/Pacific Two hurricanes to monitor: The National Hurricane Center is issuing advisories on Hurricane Celia, located more than 1000 miles west-southwest of the southern tip of the Baja California peninsula, and on Tropical Storm Darby, located several hundred miles west-southwest of Manzanillo, Mexico. Tropical Storm 05E (Darby) is on a strengthening trend...and may reach category 1 hurricane stage over the open ocean in a couple of days. For now both are expected to remain offshore.

DGZZ/Ghana African Union nationals whose countries do not have a visa-free agreement with Ghana are now eligible for a 30-day visa-on-arrival for business and tourism. The visa-on-arrival program will be piloted for three months starting at Kotoka Airport and will be extended to other ports of entry in the future. Travellers can extend their visa upon expiry in Ghana, and business travellers can apply for a

longer-term visa at a Ghanaian consular post.

BIZZ/Iceland ATC Strike continues, primarily affecting BIKF/Keflavik, BIRK/Reykjavik, and BIRD/Reykjavik Oceanic for International Operators. Restrictions on landing, eastbound, and westbound overflying traffic. Read the article

LTBB/Istanbul FIR If you've got some time on your hands, have a look at the Greece-Turkey great NOTAM argument of 2016. This is an almost annual performance, the equivalent of a street argument between two kids.. If you're busy, just skip all of it when they appear on your Pre Flight Briefing for Turkey or Greece (which they will).

View the full International Bulletin 13JUL2016

Comms problems in the Kabul FIR

Declan Selleck
24 August, 2016



Aircraft in the eastern sections of the Kabul FIR can expect some radio issues, as a comm unit (VSAT at Ghanzi) is out of action.

Frequencies affected:

- 118.3
- 128.5
- 126.325

Airways

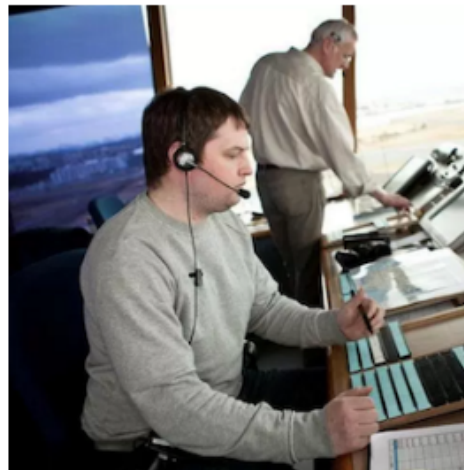
- M696 (between GIDOG and LAJAK)
- A453
- G206
- N644
- L750
- M875

The advice from ATC in Afghanistan is to keep trying the assigned frequency until within range of a different transmitter; in the meantime, a bit of SLOP, IFBP and TCAS should keep you out of trouble.

Midweek Briefing 06JUL: Hong Kong capacity problems, Iceland: The fun continues

Cynthia Claros
24 August, 2016

INTERNATIONAL BULLETIN	ISSUED BY FLIGHT SERVICE BUREAU SITA HNLFSXH AKLFSXH AFTN KMCOXAAL EMAIL INTL.DESK@FSBUREAU.ORG
-----------------------------------	--



Hong Kong capacity problems 06JUL During this year, the Hong Kong CAA has issued a couple of warnings to operators to stick carefully to their allocated slots, but it's not making much of a difference to operations there. Read the article.

Iceland: The fun continues 06JUL Last week there were some really positive indications that the ATC strike in Iceland was coming to an end, but it's now worse than ever, with Westbound, Eastbound, and landing traffic all affected. Read the article.

HECC/Cairo FIR A restriction exists for traffic to and from the Amman FIR, so if overflying Jordan and then Egypt, or vice versa, you can only use the waypoint METSA.

OMAE/Emirates FIR has some updated peak times. Departures need a slot between 0630-0730Z and 1700-0000Z. Arrivals will be spaced 5 mins apart during these times also, as will aircraft entering the OMAE FIR from nearby airports like Muscat, Isa, and Baghdad.

EIDW/Dublin Runway 10/28 is closed overnight until 09JUL.

OERK/Riyadh, Saudi Arabia will be hosting the 'Global Ministerial Aviation Summit' 29AUG-31AUG. 55 different ministers from various countries are expected to be in attendance. Be aware of potential restrictions leading up to and after the event.

CYFB/Iqaluit Another NAT alternate favourite, CYFB has some runway closures throughout July.

EGCC/Manchester is doing some work on 05L/23R overnight until 08JUL and has advised operators to carry some extra gas due possibility of holding.

LOWW/Vienna has published a helpful list of rush hour periods - worth avoiding these times as holding is common at VIE. The times are: 0530-0750, 0920-1030, 1140-1240, 1340-1500, 1615-1800, and 1840-1940Z.

BIZZ/Iceland Despite optimistic reports of a resolution to the ATC dispute in Iceland last week, the situation remains unresolved. Last night BIRD Oceanic was closed to most Eastbound traffic once again, as was BIKF. A new addition to restrictions is a closure to many Westbound flights on Wednesday 06JUL - "DUE TO STAFF SHORTAGE IN REYKJAVIK OACC WESTBOUND TFC PLANNING TO ENTER BIRD FROM ENSV VIA GUNPA, VALDI, IPTON, INGAL, ISVIG AND EGPX VIA LIRKI, GONUT, OLKER, MATIK AND RATSU AND THEN PROCEEDING INTO EGGX OR CZQX SHALL REMAIN SOUTH OF BIRD CTA" Read the article.

EDYY/Maastricht ATC have requested crews operating through the Maastricht UIR to log on to CPDLC EDYY, if you have datalink. While voice remains the primary comms method, you might get an uplink message if the frequency is busy - it's not a test, you should confirm - most of these uplinks are likely to be frequency changes.

EPZZ/Poland has advised operators to check carefully whether permission is required in advance of operations at airports other than EPWW/Warsaw. Many countries including Poland have reinstated Border Controls within the Schengen zone. Best advice is to treat each country as having full Border Controls for the moment (so think Passport, GenDec, etc.)

SPIM/Lima FIR (Note that the airport is now SPJC, distinct from the FIR code) is shutting down airway UG427 after 21JUL.

SUEO/Montevideo ACC (Uruguay) has some comms issues in it's airspace, and has advised of some extreme spacing between aircraft irrespective of FL - 40nm. For now, this ends today (06JUL) but may happen again.

WSZZ/Singapore Qualifying citizens of Singapore are now eligible to apply for US Global Entry membership - and benefit from expedited entry to the United States at designated airports. Similarly, qualified U.S. citizens are eligible for enrolment in Singapore's enhanced-Immigration Automated Clearance System (eIACS).

ZMUB/Ulaanbaatar, Mongolia is downgraded to RFF Cat 7 until 10JUL. Also, from 12-16JUL, you can't file this as an alternate which may limit your options somewhat.

LFPG/Paris due to maintenance on the ILS for Runway 08L/26R from 18JUL to 02OCT. The only approaches that will be available will be RNAV based procedures (LNAV/VNAV, LPV, LNAV) and VOR/DME.

GQNN/Nouakchott, Mauritania has moved to a new international airport this June. Located approximately 10nm north of the city, it has an annual passenger capacity of 2 million. Infrastructure from the capital's old airport was transported to the new one.

SECU/Cuenca Following the landing incident on 28APR of an E190, all inbound flights will be reportedly be held if the runway is wet – until end of August.

LFMH/St Etiennee Fuel outage on 07JUL, 0800-1100 UTC.

Canada/Mexico From 01DEC2016, Mexican nationals will be able to travel to Canada without a visa for business and tourism for up to 90 days.

Turkey/Russia Russia has lifted the travel restrictions on tourists between the two countries. The ban was put in place following the downing of a Russian military aircraft last year.

Bangladesh Germany, Australia and the U.K. have banned direct cargo flights from Bangladesh due to security concerns.

Israel/China The Israeli parliament has ratified a multiple-entry visa agreement with China, under which Chinese business visitors and tourists can enter Israel multiple times with the same ten-year visa and vice versa.

EZZZ/Europe the European Union updated **Air Safety list** (aka the Airline Blacklist) on 17JUN, and lifted a ban on Zambian air carriers.

Uganda Introduction of 'e-visa' system. You must show a valid yellow fever vaccination certificate on arrival.

ZJSA/Sanya FIR, China has an ADS-B trial up and running on L642 and M771. Radar is still the primary separation tool, but ATC ask that you check your Flight ID matches your FPL.

View the full International Bulletin 06JUL2016

Midweek Briefing 29JUN: Santa Maria Oceanic Strike, US Entry Requirements

Cynthia Claros
24 August, 2016

INTERNATIONAL BULLETIN

ISSUED BY FLIGHT SERVICE BUREAU

SITA HNLFSXH AKLFSXH AFTN KMCOXAAL
EMAIL INTL.DESK@FSBUREAU.ORG



Santa Maria Strike: Four Routes 29JUN Santa Maria Oceanic has published four special routes for use during the upcoming **"July Friday Strike Series"** ATC Industrial Action. Read the article and then Summer of Strikes.

New US Entry Requirements 29JUN The US has updated entry processing through ESTA (the online visa system for countries using the Visa Waiver Program). Read the article.

LTBA/Istanbul has reopened to traffic after a terrorist attack on 28JUN. 40 people were killed in a series of explosions and gunfire at the International terminal on Tuesday evening.

UMZZ/Belarus will undergo a re-evaluation of its currency and banks will be closed to the public between 30JUN and 01JUL, if operating to Minsk you should ensure you have sufficient cash available for those days.

EGZZ/UK Much has been written about Britain's departure from Europe this week (and we're talking Brexit, not football), but if you're having trouble figuring out how this will affect you as an operator, that might be because it won't. Read the article.

LGZZ/Greek Islands Now that summer is here in Europe, the annual capacity challenge at Greek Islands is most acute on weekends, expect healthy slot delays if operating to LGIR (Iraklion) LGKP (Karthos) LGMK (Mikonos) LGZA (Zakinthos) LGSR (Santorini) LGSK (Skiathos) or LGSA (Chania).

VHHH/Hong Kong The CAD issued a reminder to operators this week that the airport is under strain, and slots issued must be strictly adhered to. It would seem that the Slot Adherence procedure issued earlier in the year isn't really working. Any local operators have feedback? Let us know.

EFRO/Rovaniemi has no Jet A1 available from until July.

LPPS/Porto Santo is also out of Jet A1 until 01JUL.

DAAA/Algeria New fax/phone number for the ACC (Area Control) in Algiers: **+213 (0)21 67 49 27** until 23JUL.

AYZZ/Papua New Guinea Reports of civil unrest, student demonstrations across Papua New Guinea started in May 2016 and are ongoing. There have been violent clashes between students, other groups and the police in Port Moresby, Lae and the Highlands.

PWAK/Wake Island has advised its High Loader is out of action until later in the year, so for large aircraft like B767 upwards, no offload capability exists for cargo.

EGZZ/Scotland (Will we need a new ICAO code soon?) Glasgow ATC – at both EGPK and EGPF – has sporadic closures overnight at present due to staffing issues. Keep an eye on Notams.

WAAF/Ujung Pandang has some radar outages affecting high-level overflights, optimum levels may not be available.

LPPO/Santa Maria Oceanic has published four special routes for use during the upcoming “July Friday Strike Series” ATC Industrial Action. The Strike Time Period is : 0700-0900Z, during which time only these four routes will be accepted. -ROUTE A- 45N020W 40N030W 37N040W -ROUTE B- DETOX 39N020W 36N030W 34N040W -ROUTE C- LUTAK 36N020W 33N030W 29N040W -ROUTE D- ULTEM 27N040W

LIZZ/Italy We have been notified of possible ATC industrial action on 23JUL which was previously scheduled on 05JUL. Details and participation of relevant ACCs are as follows: National strike (ACCs and airports) 0800-1600 UTC. Local strike at LIRA – Ciampino 0800-1600 UTC.

VCBI/Colombo, Sri Lanka There was industrial action yesterday, 28JUN, by Immigration Officials, which may continue. Flight delays possible.

LEZZ/Spain There was a strike threatened by Apron Controllers at LEMD/Madrid but that was cancelled on Monday.

LPZZ/Portugal The seven unions of NAV Portugal sent a pre-notice for an industrial action for ATC and non-ATC personnel, during two hours daily on: 30JUN and 8/15/22/29JUL.

KATL/Atlanta Upgrades on the airport have officially started, which will include a new runway, concourse and hotel.

View the full International Bulletin 29JUN2016

US Entry requirements updated

Declan Selleck
24 August, 2016



The US has updated entry processing through ESTA (the **online visa system** for countries using the Visa Waiver Program).

The system now reflects the designation of Somalia, Libya and Yemen as countries of concern, a change made under the Visa Waiver Program Improvement and Terrorist Travel Prevention Act of 2015.

In addition to the country-specific travel restrictions, a request for ESTA applicants' Global Entry Program Numbers was also added.

The Visa Waiver Program allows foreign nationals from designated countries to enter the United States for business or tourism for up to 90 days without the need to obtain a B-1/B-2 visitor visa from a U.S. consulate. VWP travellers must register and obtain approval to travel from the ESTA and carry an e-passport.

Santa Maria Strike: Four Routes

Declan Selleck
24 August, 2016



Update: 1730Z/Weds - we have received notification that Portuguese Industrial action may be being withdrawn. We will update and confirm when certain.

LPPO/Santa Maria Oceanic has published four special routes for use during the upcoming "July Friday Strike Series" ATC Industrial Action.

If you happen to be crossing the LPPO FIR on a Friday morning in July, then expect a hefty reroute if you didn't file per the plan.

The Strike Time Period is : 0700-0900Z, during which time only these four routes will be accepted.

-ROUTE A- 45N020W 40N030W 37N040W

-ROUTE B- DETOX 39N020W 36N030W 34N040W

-ROUTE C- LUTAK 36N020W 33N030W 29N040W

-ROUTE D- ULTEM 27N040W

The cutoff time for these routes is when you enter the LPPO/Santa Maria FIR

Traffic entering prior to 0700Z: unrestricted

Traffic entering the FIR between 0700-0900Z: Must file and fly one of the four Routes above.

Traffic entering the FIR after 0900Z: unrestricted

Midweek Briefing 22JUN: Iceland ATC strike

- end in sight, Israel FPL changes

Cynthia Claros
24 August, 2016

INTERNATIONAL BULLETIN	ISSUED BY FLIGHT SERVICE BUREAU
	SITA HNLFSXH AKLFSXH AFTN KMCOXAAL
	EMAIL INTL.DESK@FSBUREAU.ORG



Iceland ATC strike - end in sight 22JUN Operators on both sides of the Atlantic have been frustrated over the last 6 weeks with continual sporadic ATC Industrial action. And end may be in sight, but in the meantime keep a close eye on BIRK, BIKF and BIRD Notams. Read the article.

FPL changes: Israel 22JUN Current Flight Planning procedures for flights across Europe from Israel will change in light of a new agreement signed between Israel and Eurocontrol. Read the article.

LFZZ/France ATC Strike Number 9 gets underway today until 24JUN at 0400Z, usual disruption and restrictions apply. Avoid France where possible. NOTAM F1171/16 refers.

EGGX/Shanwick is having an 80's party on the 28th of June at 1600Z. For engineering work, all the new technology is being taken offline for three hours, so no CPDLC, ADS-C or OCL. Instead we have Voice Reports, HF, Manual Clearance Requests (123.95 or 127.65), and so on; just like the good old days. When you hit 30W log on to Gander manually.

UMZZ/Belarus The Minsk FIR has updated its table of cruising levels and altitudes below Transition; view the AIC.

Gambia The UK FCO issued updated travel advice for The Gambia : "Demonstrations took place in April and May 2016 in Banjul. Demonstrations could occur at any time in any part of the country prior to presidential elections planned for 01DEC. You should be vigilant, avoid all demonstrations"

LPZZ/Portugal is joining the International ATC Strike Club and will begin with industrial action, for two hours daily on: June 30th, and July 8th,15th, 22nd and 29th.

KCXO/Houston Regional will be opening a new customs facility mid July. KCXO serves the Metro-Houston area and is 46 miles outside of town. The new CBP facility adds more choice to international operators over the already saturated Houston area airports.

KZZZ/United States The U.S. Navy has scrubbed the planned military GPS interference testing across the U.S. Southwest that was supposed to happen this month.

LWSS/Skopje is implementing Free Route Airspace in the Skopje ACC above FL245, effective 23JUN. FRA is available H24 with DCT limit unlimited. The ATS network above FL245 is withdrawn. Additional info is available in the Republic of Macedonia AIP AMD 58/16. New RAD measures can be found in the increment file and will become part of Annex 4 on AIRAC 1608.

LWZZ/Macedonia Late on 20JUN, tens of thousands of anti-government protesters gathered in central Skopje, Macedonia's capital, to conduct another demonstration. The protesters gathered outside the Special Prosecution building before then marching to the Ministry of Justice building, where they broke some of its windows and threw red paint at its exterior.

EZZZ/Scandinavia Another Free Route Airspace update is happening in the two Functional Airspace Blocks NEFAB and DK/SE FAB. NEFRA Phase 1 will be implemented as of AIRAC 1607 on 23JUN, to implement H24 cross border Free Route Airspace between DK-SE FAB and NEFAB, except Norway, above FL285. ATS routes will be kept. Norway plans to implement cross-border Free Route Airspace spring 2017.

CYZZ/Canada has introduced "No Drone Zones" around airports that includes fines for offenders caught operating drones in the restricted areas. They are also drafting new legislation to strengthen rules regarding drone operations.

LEMD/Madrid may have industrial action on 28JUN, the Apron controllers are making noises about a strike. Not confirmed.

WAZZ/Indonesia FIR Ujung Pandang FIR has a couple of radar outages from 19-27JUN. Reroutes or delays are not likely, but strong potential for lower than optimum Flight Levels.

HECC/Cairo FIR If for some reason you are operating flights to or from Libya, then **A:** You're probably not reading this bulletin carefully enough, and **B:** Be aware that you are required to obtain PPR from Egypt via AFTN to HECAYNYX, at least 48 hours before the flight, in order to overfly Cairo FIR.

EGAA/Belfast ILS 25 out of service along with other ongoing runway and taxiway closures until 11AUG16. Please check EGAA NOTAM's for specific closures.

EGLF/Farnborough Temporary restricted airspace will be in effect for the annual Farnborough Airshow 16-17JUL. AIC M 033/2016.

France The French authorities have extended the document checks at their borders, these measures will apply to all airports in France and also to Basel airport. Especially during the period of the European Football Championships, passengers travelling to/ from French airports are asked to ensure they have a valid identity document (passport or identity card) with them whilst travelling. A drivers license is not an acceptable document.

VTBB/Bangkok FIR Monsoon season runs July-September. Big potential for holding and airport closures in the region, taking extra fuel is recommended.

OEZZ/Saudi Arabia FIR is introducing new Navigation Charges on 01JUL. All the maths is here.

LSZA/Lugano will close 10-19OCT due to heavy maintenance work on the main runway. No traffic will be able to operate. The airport operator has said 20OCT should be the reopening day but risk that this may be extended.

WMZZ/Malaysia Following a directive by the Malaysian Immigration Department, all foreign nationals travelling on all domestic flights will be required to produce passports upon passing through Immigration control, effective immediately.

Azerbaijan An online e-visa issuing system, called ASAN Visa, will be established that should streamline the visa application process. Eligible foreign nationals will be able to obtain supporting documents, submit their visa applications and receive an e-visa within three days of submission through the portal. The list of eligible nationals is expected to be available soon on the Foreign Ministry website.

EGPK/Prestwick has ongoing overnight closures due to ATC staffing problems, keep an eye on NOTAMs.

EIDW/Dublin will closed for 15 minutes at 1500Z on 23JUN due to a VIP departure.

NWWW/New Caledonia The South Pacific is not exempt from ATC strikes either; overnight closure of the NWWW airspace means no enroute traffic accepted in the FIR tonight – and sporadically ongoing. Note that the Fire Service also has reduced RFF category at specific times. Check Notams.

SKED/Bogota FIR NOTAM of the month award: Colombia Notam A1947 issued on 17JUN. Be aware of the potential for your Cabin Crew to request a change to the SID from ATC, unbeknownst to you. In full: “CHANGES TO STANDAR (sic) INSTRUMENT DEPARTURE (SID) COULD BE DONE BY RADIOTELEPHONY BETWEEN CABIN CREW AND THE CORRESPONDING ATS DEPARTMENT WHILE COMMUNICATION INTERCHANGE, IN ACCORDANCE WITH AERODROME OPERATIONS REF. AIP ENR 1.10”.

We actually have no idea what they mean. Let us know, and keep an eye out for those sneaky flight attendants.

LEPA/Palma has a bunch of outages, and runway and taxiway closures at present that will create restrictions and delays. Take a close look at your arrival and dep times before operating.

Suriname Immunisation checks for Yellow Fever are being carried out throughout June at all border check points, ports and international airports in Suriname; make sure you have a valid yellow fever certificate if required.

RJZZ/Japan On 22JUN heavy rains caused building damage and fatalities in southwestern Japan. At least six people died, as a result of the rain and mudslides across the island of Kyushu. Emergency personnel evacuated several hundred people due to the threat of further mudslides.

Uzbekistan has increased security due to a major summit, from 23-34JUN which may result in changes to flight departures and lengthy check in and security clearance at airports across the country.

View the full International Bulletin 22JUN2016

Israel moves closer to Eurocontrol

Declan Selleck
24 August, 2016



Israel has signed an agreement with Eurocontrol to work more closely together in flight planning.

Air traffic between Israel and Europe has been growing at over 9% a year for the past three years. This growth poses ongoing challenges to international civil aviation and underlines the need to improve ties between regions in order to ensure flight efficiency and safety in airspace and airports that are growing more crowded every year.

Israel is now the second country to sign the “Eurocontrol Comprehensive Agreement”.

What does this mean for operators?

The existing process is complex and multi-step: flights that transit Europe from Israel require filing at least 3 hours in advance to the Tel Aviv Coordination Centre, who then liaise with Eurocontrol to verify that the routing is RAD compliant. Changes are often then made by Eurocontrol and back down the line to the operator.

The implementation date is to be confirmed, but FPL filing out of Israel will now be the same as for any other European country, with immediate ACK from Eurocontrol.

Other benefits of this agreement are improved crisis management, more efficient traffic flows between Israel and Europe, more predictable day to day operations, improved safety and possibly airspace redesign and management.

Iceland ATC strike - a solution

Declan Selleck
24 August, 2016



The strike goes on ... but there may be a solution by Friday this week. Icelandic MPs passed a bill forcing a resolution to the ongoing pay dispute with air traffic controllers. The new law states that the air traffic controllers' union and the airport operator Isavia have until Friday to reach an agreement - failing this, the matter be sent to a court of arbitration for a final resolution.

In the interim, sporadic airport closures at BIKF/Keflavik and BIRK/Reykjavik continue, as do general airspace restrictions in the BIRD FIR. If you can avoid a stop in Iceland, it would seem sensible to do so until the conflict is resolved.

Sudan “will shoot down” aircraft

Declan Selleck
24 August, 2016



In May 2016, Sudanese radar detected several unauthorised flights by Aid Agencies using chartered IL76 aircraft. The response from the government, on this occasion the Sudanese Army, was extremely strong.

We are concerned at the language being used in Khartoum and Juba. The most recent statement from the Sudanese Army, on 2nd June 2016, says “This action is considered a serious violation of the aviation regulations and the international laws, so we consider it as a direct affront to the Sudanese sovereignty ... [we] will deal decisively with any plane failing to observe the proper procedures and entering the Sudanese airspace without prior permission”.

At the start of this year, the South Sudan government declared: “The South Sudanese government has ordered its army to **shoot down any aircraft** flying across its airspace without permission, citing the increase of unauthorised incursions into the national airspace”.

It’s tempting to dismiss this as not related to regular airline or non-scheduled flying – including long haul overflights – but we’ve learned lessons in the last few years that the unexpected isn’t as distant a threat as it used to be.

Midweek Briefing 08JUN: Unsafe Airspace, New China ADIZ

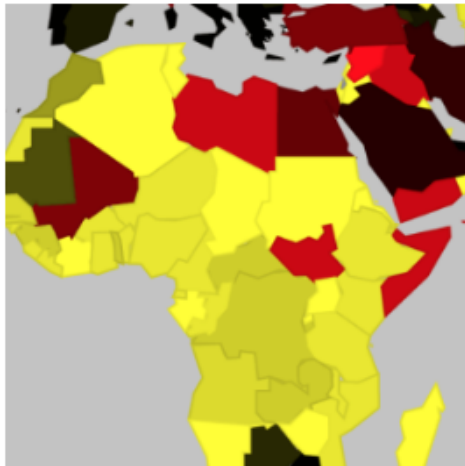
Cynthia Claros
24 August, 2016

INTERNATIONAL BULLETIN

ISSUED BY FLIGHT SERVICE BUREAU

SITA HNLFSXH AKLFSXH AFTN KMCOXAAL

EMAIL INTL.DESK@FSBUREAU.ORG



Unsafe Airspace - new summary issued 08JUN Today Flight Service Bureau published International Ops Notice 02/16 - "Unsafe Airspace".

New China ADIZ - South China Sea 08JUN There have been several media reports this week that China is preparing to set up a new ADIZ in the South China Sea. Read the article.

KCLT/Charlotte New SIDS and STARS for aircraft arriving and departing to the Northeast have been added to CLT as of May 31. Also, construction of a new ATC tower has also broken ground, the new tower will be equipped with NextGen systems that include STARS (Standard Terminal Automation Replacement System), ADS-B (Automatic Dependant Surveillance - Broadcast) and AEFS (Advanced Electronic Flight Strip System).

CZZZ/Western Canada has been experiencing fuel shortages due to recent wildfires in the oil patch. Please check with local handlers for any fuel constraints.

KZMA/Miami FIR NASA is planning on launching a Delta IV rocket on 09JUN. Please check KZMA FIR NOTAMS for restrictions.

KZZZ/USA Tropical Storm Colin has passed Florida, Georgia, South Carolina and North Carolina before moving out over the Atlantic.

CYQY/Sydney, Nova Scotia has added 2 fire trucks and increased staffing levels to provide ARFF CAT 6 or 7, time of day pending. CYQY has issued NOTAM 1A3425/16 covering those hours.

LLZZ/Israel has signed an agreement with Eurocontrol and will allow the country and it's users to benefit from the services that Eurocontrol provides. This is excellent news for filing out of LLBG and transiting to or over Europe as this will help streamline the process significantly and coordination will only have to be with Eurocontrol for any changes.

RCTP/Taipei has resumed operations on June 3 after operations were suspended due to flash flooding. The airport has also lost power numerous times due to the unstable power supply following days of severe flooding. While the power cuts rendered the terminal's air conditioning system inoperable, the airport experienced only minor delays.

VNKT/Kathmandu has been experiencing problems with the VHF ATC equipment. Aircraft on approach and Area Control freqs may experience increased squelch and at times leaving ATC without comms.

HSZZ/Sudan has warned it will shoot down any aircraft that infiltrates it's airspace that has not obtained the proper permission and/or following proper procedures. If you need to transit this airspace please make sure you have all the required documentation.

FHSH/St Helena has reportedly delayed the airport opening indefinitely, due to safety concerns – severe turbulence and windshear were commonplace during testing trials by a B737-800.

China Beijing – The Mainland Affairs Council (MAC), which supervises relations across the Taiwan Strait, on Friday issued a yellow travel alert for Beijing after the first H7N9 flu infection case for this year was confirmed in the Chinese capital.

Malaysia Malaysian officials fired several officials on charges connected to a security breach at Kuala Lumpur International Airport (WMKK/KUL). Security officials stated that airport security officials collaborated with human trafficking syndicates to bypass the airport's passport verification system. The investigation discovered that, since 2010, airport officials purposely disrupted the immigration system at certain times of the day on several occasions. Malaysian officials will publish a report with the full findings.

Angola The World Health Organization (WHO) reported on 27 May 2016 that 301 people have died in Angola's yellow fever outbreak, which began in December 2015. The number of suspected cases is now 2,536. The outbreak began in Luanda and has since spread to areas throughout the country, particularly along the coast and in the central regions, despite a large-scale vaccination program. Cases linked to the Angolan outbreak have also been reported in the Democratic Republic of Congo (DRC), Kenya and China.

Jamaica is now charging a \$35 US departure tax for all air passengers.

Uzbekistan British FCO cautions when travelling with medicines; you can be detained on arrival if you're in possession of certain medicines, including codeine; you should always carry a doctor's prescription with you.

France – the Air France pilots' union announced a work stoppage for 11-14 June, coinciding with the first week of the Euro 2016 soccer championship. The strike has been planned in protest over pay disputes, and the union has stated that it may observe further strikes. Further details are likely to emerge, as the situation is developing.

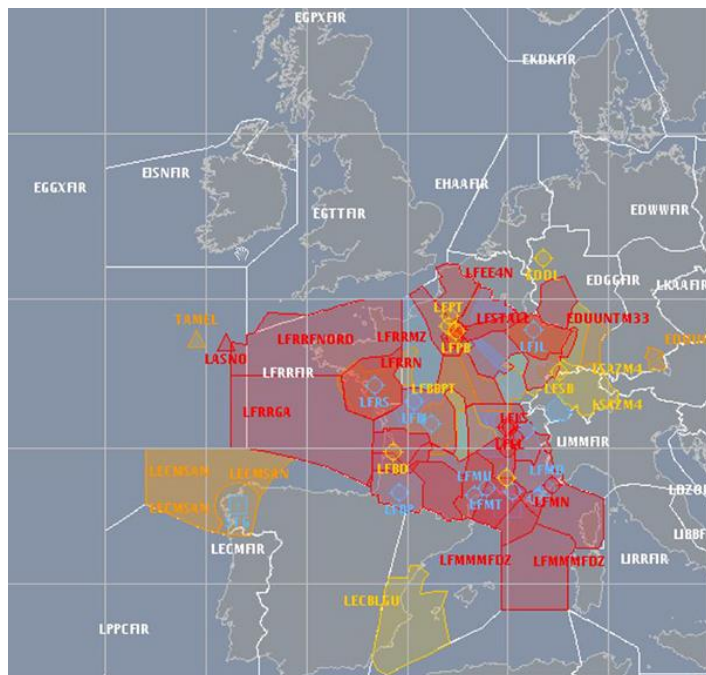
Yemen On 28MAY, approximately 20 gunmen stormed Aden International Airport (OYAA/ADE). A 90-minute gunfight followed the attack, during which one civilian was killed by a stray bullet. Authorities regained control of the situation and detained the gunmen's suspected leader.

Nepal A nationwide general strike is planned on Thursday 09JUN2016 across the country. Protest can occur at short notice anywhere. Stay cautious and stay away from these areas.

View the full International Bulletin 08JUN2016

French ATC strike this weekend - Number 8

Declan Selleck
24 August, 2016



Notification has been given by French ATC Unions of a **Three Day Strike** this coming weekend from Friday-Monday, starting at 0400Z Friday 03JUN. This is Strike number 8 this year, and if it goes ahead, promises to be a disruptive one.

As with all previous strikes, reroutes if you are overflying will be important.

Highlights:

Reroutes via Tunisia, Algeria

Tunisia and Algeria regularly open up their airspace to reroutes during French ATC action – and will likely do so again for this strike.

- Tunisia (DTTC FIR): Overflight permit **is** required (AFTN direct **DTTVYAYX**)
- Algeria (DAAA FIR): Overflight permit **not** required during this strike but copy FPL to DAAAZQZX and DTTCZQZX

Reroutes via Shanwick Airspace

Read our earlier post on this: <https://ops.group/blog/the-three-sisters-shanwicks-tango-routes/>

GPS Jamming at Cairo

Declan Selleck
24 August, 2016



Egypt notified airlines yesterday that GPS jamming is a concern to arrivals and overflights, and warned against conducting RNP/RNAV arrivals or approaches.

The jamming was announced on 24MAY, and is centred on Cairo Airport; the source is unknown.

Similar GPS jamming was conducted, at state level in that case, by North Korea last month, from five locations along the border with the South. South Korea, along with other Civil Aviation Authorities, are looking at an eLORAN based alternative as a backup.

Operators planning flights through the Cairo FIR should monitor NOTAMs for latest.

Midweek Briefing 18MAY: Brazil Airspace changes for Olympics, Increase in Fake Nav Charges

Cynthia Claros
24 August, 2016

INTERNATIONAL BULLETIN

ISSUED BY FLIGHT SERVICE BUREAU

SITA HNLFSXH AKLFSXH AFTN KMCOXAAL

EMAIL INTL.DESK@FSBUREAU.ORG



Date: Mon, 16 May 2016 07:35:54 -0700
From: assistant (lina.kurachenko@eurocontrol.net)
Subject: Remittance eurocontrol slip

The Manager Accounts Payable Controller,

Eurocontrol demands for swift confirmation and proof of settlement of EUROCONTROL. The invoices are with regards to Air navigation, En February and March 2016 invoices. We kindly request that you forward updates, and also to enable us updates all records in preparation for it reconciliation purpose.

We also wish to use this medium to inform you of the change in our accounts stated on the invoice send to you due to the logistics pro forward to your notification as soon as possible, preceding to the su plead that you bear with us.

Thanks once again for your understanding and cooperation.

Thank you and best regards,

Lina Kurachenko
COLLECTION OF CHARGES
CRCO/CAT/ACCOUNTING
EUROCONTROL-CRCO-UNIT.
Rue de la Fusee 96
1130

Brazil Airspace changes for Olympics 18MAY A number of airspace changes, and specific procedures for aircrew and ATC, have been created for Brazil in advance of the 2016 Olympic Games, which start on 05AUG. Read the article.

Increase in Fake Nav Charges 18MAY We've seen an increasing variety of bogus emails, that at first glance look like they are from Eurocontrol – but aren't. It's a concern: instead of sending your Nav Fees payment to Eurocontrol, you've actually sent it to a suburb of Lagos. Read the article.

LFZZ/France A French national call to strike is planned for 19MAY. Several public service unions have echoed this call, including USAC-CGT for the DGAC. Please check the **NOP Portal** for the latest advisories.

BIKF/Keflavik Closures here and in BIRD/Reykjavik Oceanic airspace continue due to ATC Industrial action. Plan all flights to or within Icelandic airspace with caution. Iceland strike continues ... Read Full Article.

UIBB/Bratsk has multiple new restrictions of ATC hours, RFF categories, and availability as alternate. Check A1923.

PLCH/Christmas Island will not supply JetA1 to non-scheduled flights, shortage until 26MAY. Landing permits are now required at least three days prior, and can be obtained via email at cal02@mcttd.gov.ki.

EGLL/London Heathrow will have an emergency exercise on 21MAY. If you see smoke or fire, it's most likely from there.

N90/New York Airports The FAA has withdrawn its proposed slot program which was extremely restrictive to non-scheduled operators. The FAA is withdrawing the **NPRM** to allow for further evaluation of these changes.

KZZZ/United States the FAA has updated it's list of **Critical DME's**. When these critical DME's are not available, it results in navigation service which is not sufficient for DME/DME/IRU operations along all or portions of a specific route or procedure. This is mainly an issue for Non-GPS equipped aircraft.

CYUL/Montreal has added a new International wing to the terminal as of 12MAY. The 65,620-square-foot expansion includes 8,611 square feet of additional retail space and six new boarding gates.

SOOO/Cayenne FIR issued NOTAM A0141/16 advising that due to the SOCA CPDLC system trail, datalink connection may be lost. If unable to communicate by CPDLC then they advise to contact SOOO or SOCA VIA normal HF frequencies until 24JUN.

North Atlantic The London Met Office has issued its **North Atlantic tropical storm seasonal forecast for 2016**.

EZZZ/Europe an annual large scale military exercise called "NATO Tiger Meet 2016" will be held from 16MAY to 27MAY in Spain. NOTAMs LE D1109/16 and D1272/16 have been issued along with a **map** detailing the area.

LOWW/Vienna has introduced 2 new RNP(AR) approaches RNAV (RNP) N RWY 16 and RNAV (RNP) E RWY 16. The Austrian AIS has issued **AIC A 5/16** covering the additions.

LKPR/Prague officials stated that they are working to assess the security at LKPR as they begin to implement the government's security recommendations. The measures, including face recognition technology, should be fully introduced within 12 to 18 months. Security has increased in response to the attacks in Brussels. Heavily armed soldiers continue to patrol LKPR.

Arabian Peninsula on 11MAY the Centre for Disease Control CDC issued an Alert Level 2 for MERS in the Arabian Peninsula.

NZZC/Christchurch FIR has issued NOTAM B2740/16 advising of recent activity for Volcano Mount Ruapehu. No current eruption but concern for increased likelihood of eruption exists.

FHSH/St. Helena has received its certification to begin commercial flight operations. An 1850 meter runway, a 3500 sq m airport terminal and other associated infrastructure, such as access roads, bulk fuel installations, water supplies and aerodrome ground lighting have been installed and are ready for operational use. However – concerns remain about windshear which is currently delaying acceptance of traffic.

HKZZ/Kenya The U.S filed an advisory with IATA stating that Kenyan airspace is unsafe due to a possibility of extremist or militant activity within Kenyan airspace as Al Shabaab has demonstrated the capability and intent to conduct terrorist attacks in Kenya targeting, among others, US/Western interests including aviation interests.

EGPX/Scottish Scottish Control is changing to a new ATC system this week: expect airspace restrictions. ATC advises a fundamental level of change in the method of operation within Scottish Upper Airspace will result. There is no change to the Oceanic Operation, and Domestic CPDLC will be available at all times from 17MAY.

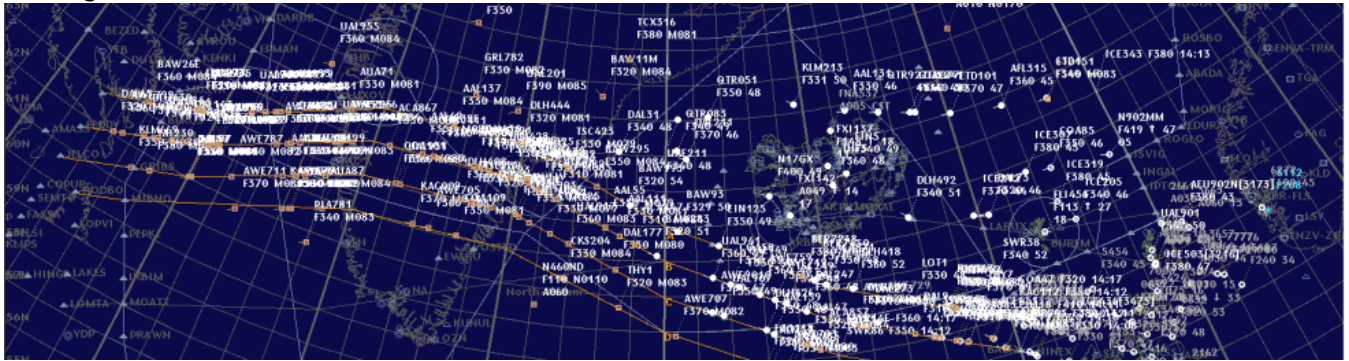
CYMM/Fort McMurray, Canada remains closed due to Forest Fires; only emergency and evacuation flights are allowed.

EHZZ/Amsterdam FIR The Netherlands has revised procedures for obtaining Special Permission for overflying or landing aircraft on delivery, ferry flights, or other circumstances where a normal Certificate of Airworthiness is not in place. Read the article. Questions should be directed to our ferry team at service@fsbureau.org.

View the full International Bulletin 18MAY2016

Reykjavik Oceanic Closure

Declan Selleck
24 August, 2016



BIRD/Reykjavik Oceanic Operators planning eastbound flights across the NAT should be aware of a NOTAM issued earlier by Reykjavik Oceanic/Iceland ATC, that essentially asks traffic to avoid the airspace wherever possible, due to further ATC Industrial Action. Eastbound flights in particular will not be accepted into the airspace unless:

- Destination is in Iceland, Scandinavia, Baltic States or Russia
- Departure point is west of Denver (105W)

Refer to NOTAM A0248/16

We recommend to monitor BIRD/Iceland NOTAMs carefully as similar restrictions can apply in the next few days.

Eurocontrol - Cargo Flights alerts

Declan Selleck
24 August, 2016

In 2012, the EU put in place the EU ACC3 program - air carriers that fly cargo or mail from a non-EU airport to an EU airport must ensure that all cargo and mail carried to the EU is physically screened or comes from a secure supply chain which is validated.

Air carrier stations in third countries are required to have undergone an audit to obtain an EU Aviation Security Validation in order to acquire or maintain their ACC3 designation. This validation needs to be reissued every five years, according to the EU Regulations.

On 01FEB16, Eurocontrol set up a NM ACC3 alerting system - checking Flight Plans, and sending a message to the European Commission and the relevant EU Member State/s when a flight is identified as not having the correct ACC3 accreditation.

Iceland ATC Strike continues

Cynthia Claros
24 August, 2016



Icelandic Air Traffic Controllers are currently in a pay dispute with airport operator Isavia and service organisation SA-Business Iceland. Controllers are at work, but a ban on all overtime has been in place since 06APR. Last week, two controllers were taken ill and, because of the work-to-rule, no cover could be found.

The result was a shutdown of BIKF/Keflavík International Airport, a regular tech stop and alternate for the NAT, between 9pm and 7am.

Similar closures are currently NOTAMed for BIKF and BIRK in the coming days, notifying multiple further ATC strike actions.