

Earthquake effects: Japan, Ecuador

Declan Selleck

19 April, 2016



Two large earthquakes struck Japan and Ecuador in the past week, with a longer term impact on International Flight Ops.

Japan

At 0124LT Saturday a 7.3 quake hit Japan, centred on Kyushu, the large island at the southern end of the country.

Airports: **RJFT/Kumamoto** is closed UFN to all traffic. **RJFF/Fukuoka** operating normally, **RJFU/Nagasaki** operating normally. In addition, in Kyushu: – Many roads, bridges damaged, Railways out of service, Region should be avoided.

Ecuador

On the same day, a 7.4 earthquake centred towards the north-west of Ecuador.

SEMT/Manta, a regular tech stop for traffic between the US and South America, is closed to normal operations after the Terminal and Control Tower suffered significant damage.





Collapsed Control Tower at Manta

US, Canada may lose EU visa rights, More Free Route Airspace for Northern Europe

Cynthia Claros
19 April, 2016

INTERNATIONAL BULLETIN

ISSUED BY FLIGHT SERVICE BUREAU

SITA HNLFSXH AKLFSXH AFTN KMCOXAAL
EMAIL INTL.DESK@FSBUREAU.ORG

expect. time	destination	airline
13.25	RHODES	
13.35	MUNICH	
13.40	GENEVE	
13.45	PARIS	
13.55	ROME	
14.00	NAPLES	
14.05	MADRID	
14.15	TUNIS	
14.25	ZURICH	



US and Canada may lose EU visa rights 13APR The European Commission published warning on 12APR that visa-free travel by US and Canadian citizens to Europe is at risk, due to the lack of a full reciprocal arrangement for EU citizens. **Read the full article.**

More Free Route Airspace for Northern Europe 13APR Sweden, Finland, Denmark, Estonia and Latvia will be increasing free route airspace from 23JUN16. This allows operators to utilize User Preferred Routes above FL285. Details of the implementation can be found through the AIC A3/2016 from Sweden.

RKSS/Gimpo is set to open South Korea's first purpose-built FBO next month. It includes a passenger terminal with customs and a large hangar that can accommodate up to eight large jets. The FBO is a partnership between Korea Airport Crop and Avjet Asia.

EBBR/Brussels Controversial ATC Strike occurred without notice yesterday 12APR, restricting traffic at EBBR and in Belgian Airspace. Eurocontrol advises 4 of 6 sectors operational Wednesday 13APR, at this stage no significant further effect likely.

KZZZ/USA New security measures in the U.S. are being enacted in response to the Brussels Airport Bombings. The Senate voted to increase the vetting of airport workers, expand the number of TSA viper teams that sweep through airports unannounced to stop and search suspicious people, and double the number of TSA's bomb-sniffing dogs. Also, local law enforcement may also conduct random checks of cars and taxis heading towards the airport.

KZZZ/USA the FAA has provided its NextGEN update for 2016. It highlights all the completed items along with the expected achievements for the year. You can find all the info through the NextGEN website.

EZZZ/Europe as of 05APR Eurocontrol as been publishing Target Time information together with Calculated Take-off time (CTOT) in the Slot Allocation and Slot Revisions Messages (SAM and SRM). The purpose of the initiative is to provide flight crew with operational awareness of their flight's planned time at the congestion point in the air, rather than solely providing the corresponding delayed departure time (CTOT) to implement ATFM measures.

EGZZ/United Kingdom A large scale military exercise named 'Joint Warrior 16-1' has been taking place

since 09APR16 and will last until 22APR06. EGPX and EGTT FIR/UIRs are affected. However, low to medium impact on airline operations is expected.

LFZZ/France beginning 03MAY16 France will be implementing CPDLC services within LFFF, LFEE, LFRR, LFMM and LFBB FIR's. The full details of the IOC can be found in AIC 10/16.

EGGX/Shanwick OCA implemented a trail of 5 minute separation minimum between aircraft which are following the same track, irrespective of whether they are East or Westbound. Full details can be found through AIC Y 022/2016.

LOWW/Vienna every weekend until 24MAY16 LOWW will be operating under single runway ops beginning 2100 on the Friday until 1600 on the Sunday. The closures are weather dependent and the closure will be recalled if the forecast calls for the use of runway 11/29. In any single runway scenario use at Vienna delays are a guarantee.

OEZZ/Saudi Arabia The U.S. State department updated a travel warning to Saudi Arabia on 11APR16. It outlines the risk to travellers due to an increased risk with the threat of terrorism.

SKZZ/Colombia The U.S. State department has updated the travel warning to Colombia. They have actually improved the travel warning as the security in the country has improved significantly in recent years. Foreigners should still exercise caution though.

LTCC/Diyarbakir is now able to handle international flights due to a new terminal building that has opened.

OLBA/Beirut two airport employees were detained on suspicion of terrorist activity involvement on 08APR16. Traces of explosives and a handgun were found on the two individuals.

DIAP/Cote D'Ivoire has reduced the passenger departure tax by 50% and have also removed the solidarity contribution tax levied on airline tickets.

GABS/Mali began renovations last month (MAR16) to increase the airports capacity to handle 1.5 million passengers which is up from the 800,000 annual passenger traffic. The project is expected to be completed by the end of the year.

View the full International Bulletin for 13APR2016

MHTG 'Interesting Approaches' to end, Greeks or Italians? ATC strikes:

Cynthia Claros
19 April, 2016

INTERNATIONAL BULLETIN

ISSUED BY FLIGHT SERVICE BUREAU

SITA HNLFSXH AKLFSXH AFTN KMCOXAAL
EMAIL INTL.DESK@FSBUREAU.ORG



MHTG 'Interesting Approaches' to end 06APR MHTG/Tegucigalpa Dangerous approaches at MHTG will be consigned to history, as a new airport was finally confirmed at the weekend by the Honduran government. **Read the full article.**

Greeks or Italians? ATC strikes this week 06APR There will be an ATC strike this week in Europe, maybe by Greece, maybe by Italy, maybe by both. These strikes are often cancelled shortly before starting, but at this pre-planning stage, it seems likely to go ahead. Read the full article.

EBBR/Brussels has now reopened but operations are still very restricted. The airport is not expected to be fully operational until June or July by current estimates. The airport authority has instituted new security measures that include a requirement for passengers to arrive 3 hours prior to their departure time. The terminal is still closed to busses and trains. Slots must still be requested from the Brussels Airport Authority if you intend to operate in or out of EBBR.

ZKPY/Pyongyang FIR Many reports that North Korea is jamming GPS signals, also reported by South Korea RKRR NOTAM A0450/16. Signals have been reported as unreliable or lost when operating in or near to North Korean airspace. Exercise caution if you rely on GPS in those areas. Read our DPRK Overflight Risk article from a few weeks ago.

LIZZ/Italy Eurocontrol has confirmed an Italian ATC strike is set for April 9th. NOTAMS A2062/16A2 and A2063/16A2 have been issued covering the proposed strike.

MHTG/Tegucigalpa Dangerous approaches at MHTG will be consigned to history, as a new airport was finally confirmed at the weekend by the Honduran government. Full article here.

LFXX/France an Operational Trial of CPDLC Services in French Airspace of Reims (LFEE), Paris (LFFF) and Marseille (LFMM) ACC will be in effect from 05APR to 11APR.

EZZZ/Europe The U.S. State Department along with numerous other countries have issued a Europe wide travel warning in response to the attack in Brussels. While extra vigilance should be exercised it is also a

very generic response to a threat that has yet to be fully understood from a commercial aviation perspective. If you would like to be kept up to date on specific travel alerts from the U.S. State Department you can sign up through their STEP program.

EHAM/Amsterdam reports of near misses with drones have recently been reported by crews. The location of the near misses was on the approach path but no specific runway was mentioned.

KEWR/Newark The FAA will be increasing the number of available slots to EWR, available at the end of October. The change is in response to the improved efficiency of the airport and the ability to increase the ATC arrival rate.

FAA/United States has issued Advisory Circular 00-30C. It describes the various types of CAT (Clear Air Turbulence) along with avoidance techniques and possible future forecast systems for helping Dispatchers and Pilots in the planning stages.

KZZZ/USA Check your passport! Effective 01APR16, if you're travelling to the United States under the Visa Waiver Program, you will also need to have a valid **e-Passport** along with your ESTA.

CZVR/Vancouver ACC will begin to use ADS-C on 18APR In their Oceanic sectors, for both alerting service (SAR) and improved ATC separation purposes.

UDDD/Yerevan FIR Due to Air Defence activity ATC route segments with Yerevan FIR Crossing FIR boundary points MATAL, ELSIV, PEMA and VETEN between Yerevan FIR and Baku FIR are not available.

UBBA/Baku FIR Entry/Exit points VETEN, PEMA, ELSIV, MATAL are closed.
Baku FIR Entry/Exit points BARAD, DISKA closed from GND to FL305.
NOTAMS A0030/16 and A0032/16 have been issued as well.

UHSS/Yuzhno will be closed daily 10APR-14MAY between the hours of 12-21Z.

OMZZ/United Arab Emirates will begin charging a \$9.50 USD Passenger Tax effective 30JUN, to be imposed on all travellers over the age of 2 through all airports including those only transiting the UAE. A driving factor in this new charge appears to be low oil prices affecting the Gulf States.

UUZZ/Russia has stated that aviation authorities are intensifying its ramp inspections of all aircraft (especially foreign aircraft, we guess) in the wake of the Rostov accident.

FZZZ/Nigeria The Nigerian National Petroleum Corporation has stated that steps are currently being taken to end the country's fuel shortage, but may take upwards of 2 months. We suggest to check with local handlers for the availability of aviation fuel supply until the issue is resolved.

VNKT/Kathmandu We have received some reports that VNKT ATC weather reports are inaccurate, especially regarding visibility. Any feedback please let us know.

VIAR/Amritsar has suspended all night operations for 1 year due to the planned reconstruction of the airport's runways.

View the full International Bulletin for 06APR2016

OPSGROUP - this is new.

Declan Selleck

19 April, 2016



When we reached 25,000 readers a few months ago, it was obvious that **we were doing something right** – our little weekly ops update started out five years ago with maybe 50 people on the list.

We branched out with Plotting Charts, Ops Notices, Special Reports, and a bunch of other stuff – doing our best to keep you and others in International Flight Ops as up to date as possible.

Now, we've started **OPSGROUP**. By creating a group, we can focus on delivering all the things we make, directly to the people that want them most.

If you already enjoy our weekly bulletin, then we're excited to tell you that there's a whole lot more now available in one place. You should start by reading the **feedback from others**.



Flight Service Bureau® and The Airline Cooperative®

Pavlof Eruption wreaking havoc, Brussels Airport remains closed: Midweek Briefing

30MAR

Cynthia Claros
19 April, 2016

INTERNATIONAL BULLETIN

ISSUED BY FLIGHT SERVICE BUREAU

SITA HNLFSXH AKLFSXH AFTN KMCOXAAL
EMAIL INTL.DESK@FSBUREAU.ORG



Pavlof Eruption wreaking havoc 30MAR16 Volcano Pavlof erupted on Sunday and is currently on aviation colour code 'RED'. It has caused havoc for North Pacific, Alaskan and Northern Canadian operations. The latest predictions have the ash upwards of FL400 and extending over Northern Alaska and Canada. You can find the latest information through the Alaskan VAAC.

Brussels Airport remains closed 30MAR16 EBBR is still closed with the possibility of opening later this week. Currently all commercial flights are still prohibited from operating into EBBR. Only ferry, emergency, SAR, State, general aviation and cargo flights are authorized with a slot that can be coordinated through the Belgium Slot Coordination website.

EZZZ/Europe The U.S. State Department along with numerous other countries have issued a Europe wide travel warning in response to the attack in Brussels. While extra vigilance should be exercised it is also a very generic response to a threat that has yet to fully understood from a commercial aviation perspective. If you would like to be kept up to date on specific travel alerts from the U.S. State Department you can sign up through their STEP program.

FAA/United States there have been 583 reported hazards from Aug 22/2015-Jan 31/2015 between aircraft and Drones. None of these incidents have caused any collisions or damage but extra vigilance must be exercised until the FAA can regulate the use of these drones in the terminal areas.

RPHI/Manila has issued an advisory for aircraft operating in the vicinity of the Bulusan Volcano and the Kanlaon Volcano due to an alert level 1 of activity. Flights operating in the vicinity are advised to avoid flying close to the summit.

LFXX/France a general strike has been declared for March 31st. Possible impact to airline operations. Please make sure you check with Eurocontrol or FIR NOTAMs for further restrictions.

FXXX/Nigeria The NNPC or Nigerian National Petroleum Corporation has stated that steps are currently being taken to end the countries fuel shortage but may take upwards up 2 months. Please check with local handlers for the availability aviation fuel supply until the issue is resolved.

LXXX/Turkey has issued a nationwide terror alert and the Israeli Counter-Terrorism Bureau has advised for all of it's citizens to leave the country. Extra vigilance should be exercised if operating to and from Turkey for the foreseeable future.

UXXX/Russia has stated that aviation authorities are intensifying it's inspections of aircraft from Russian and International budget carriers in wake of the Rostov-on-Don accident.

DGAC/Ghana FIR issued NOTAM A0128/16 due to VHF freq 130.9 being not reliable for all Oceanic traffic entering ACCRA FIR from the South East due to maintenance. All traffic must contact ACCRA on HF 8903KHZ or logon to ADS-C/CPDC "DGAC" until positive VHF contact is established.

VNKT/Katmandu There have been a few reports that the Tower at VNKT has been reporting erroneous weather to pilots. One example of such a report was "Tower informed us that there was some 3 km of visibility this morning but it to be less than 1.5 km while Kathmandu was engulfed by haze". If you encounter any issues while operating into VNKT please send us a note to bulletins@fsbureau.org.

VIAR/Amritsar has suspended all night operations for 1 year due to the planned reconstruction of the airports runways.

VTBD/Bangkok Officials approved an expansion that will allow for more aircraft, passengers and vehicle parking. The plan also includes provisions to cut landing fees during off-peak hours at VTBD and VTBS in an effort to increase usage of both airports. The project includes plans to extend the runway, add office buildings, and create additional parking zones for aircraft. The expansion is expected to be completed in 2025.

Angola The Ministry of Health in Angola has reported an ongoing outbreak of yellow fever in Luanda Province. The government of Angola requires all travelers older than 9 months to show proof of yellow fever vaccination on arrival. The CDC has a 'Watch Level 1, Practice Usual Precautions' advisory in place.

FAA/United States has issued Advisory Circular 00-30C. It describes the various types of CAT (Clear Air Turbulence) along with avoidance techniques and possible future forecast systems for helping Dispatchers and Pilots in the planning stages for proactive flight planning.

View the full International Bulletin for 30MAR2016

Overflight Risk - North Korea, Australian strike: Midweek Briefing 23MAR

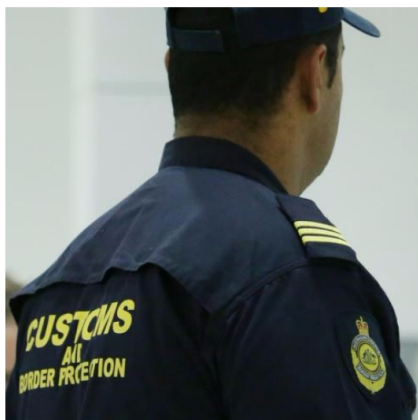
Declan Selleck
19 April, 2016

INTERNATIONAL BULLETIN

ISSUED BY FLIGHT SERVICE BUREAU

SITA HNLFSXH AKLFSXH AFTN KMCXAAL

EMAIL INTL.DESK@FSBUREAU.ORG



Australian Airport Strikes cancelled 23MAR Australia had been set up for a week of Airport Chaos over the Easter Break, with Border Protection and other government services planning a huge list of strikes – but the events in Belgium yesterday prompted an announcement this morning that the strike is cancelled. **Read the full article.**

North Korea overflight getting riskier 23MAR Over the last fortnight, North Korea has been launching short and medium range missiles like they are going out of style. Nobody in Pyongyang has any intention of aiming them at civil airliners, but the objective is not where the risk lies. **Read the full article.**

EBBR/Brussels Remains closed until 0000Z on 24MAR, at earliest. If operating to Europe, expect increased security, checks, and delays not just in Belgium but across the continent. ANSP's and AO's are invited to join an ad-hoc teleconference organized by Eurocontrol NMOC at 1100Z today. For the log-in procedure, please refer to the Crisis portlet in the protected NOP.

HKNW/Nairobi Four British nationals were arrested on 21MAR for taking pictures of aircraft at Wilson Airport (HKNW/WIL). The detainees have been ordered to pay 2,000 USD or face up to a year in prison.

VHHH/Hong Kong is taking a close look at Airlines and AO's that depart outside their allocated slot times. Airport capacity is critical and the Airport Company has said they will restrict operators seen to be abusing slot times – the official guideline is departing more than 15 minutes outside your slot window is frowned upon. Have a read of AIC 02/2016 – plenty of background information there if you operate regularly.

KZZZ/USA Thanks to Lee I. for this update – The FAA has now activated 11 of the planned 56 Airports offering CPDLC-DCL. Next up are KTEB/Teterboro and KLAS/Las Vegas on 28MAR.

MDZZ/Dominican Republic Business visitors and tourists who extend their stays beyond 30 days are now subject to an exit fee.

ZKPY/Pyongyang On 21MAR, at approximately 1519 local time (0619 UTC), North Korea launched several missiles into the Sea of Japan. South Korean media reported that the missiles landed approximately 125 mi/200 km from the North Korean city of Hamhung. U.S. military officials stated that they were monitoring the situation with a heightened defense posture. The North Korean military conducted the launch in response to ongoing military exercises between U.S. and South Korean troops.

Zika Virus The Centre for Disease Control (CDC) has listed the ZIKA virus as an “Alert Level 2”. You can find more details on which countries are specifically affected through the CDC website. The CDC has recently added Cuba to the list of affected countries.

URRR/Rostov Airport operational again following crash of B738 on 19MAR.

ZSSS/Shanghai will host ABACE2016 on 12-14APR at Shanghai Hawker Pacific Business Aviation Centre (BAC). Shanghai has two airports of entry (AOEs) – ZSSS and Pudong (ZSPD). Both require airport slots (and have general aviation (GA) departure curfews in place 0700-0900 local). While ZSPD operates 24 hours, ZSSS has night curfews in effect 0001-0559 local. It's only possible to obtain one slot, at either airport, during peak hours of 0900-2200 local. Also, by regulation, aircraft aren't permitted to reposition from ZSPD to ZSSS, and vice versa. ZSSS has a fixed-base operator (FBO), while ZSPD doesn't. Parking is limited to a maximum of three days at ZSSS but is generally unrestricted at ZSPD. Drive time between the two airports ranges from 45 to 60 minutes, depending on traffic (Thanks Sheng Young for this info).

SZZZ/Ecuador The Sangay volcano, located between the provinces of Chimborazo and Morona Santiago in the Andean and Amazon regions has shown increased activity as of 05MAR, with small explosions and tremors. Some ash flow has been observed towards the south. Please check the VAAC for further details.

GVNP/Cape Verde on 12MAR, 6 members of a TAAG Angola Airlines crew were targeted in an attempted armed robbery in Praia, Cape Verde. Reports indicate that assailants opened fire on the bus that was transporting the crew from GVNP/RAI to a hotel in Prainha. The bus driver was able to elude the attackers, and there were no injuries.

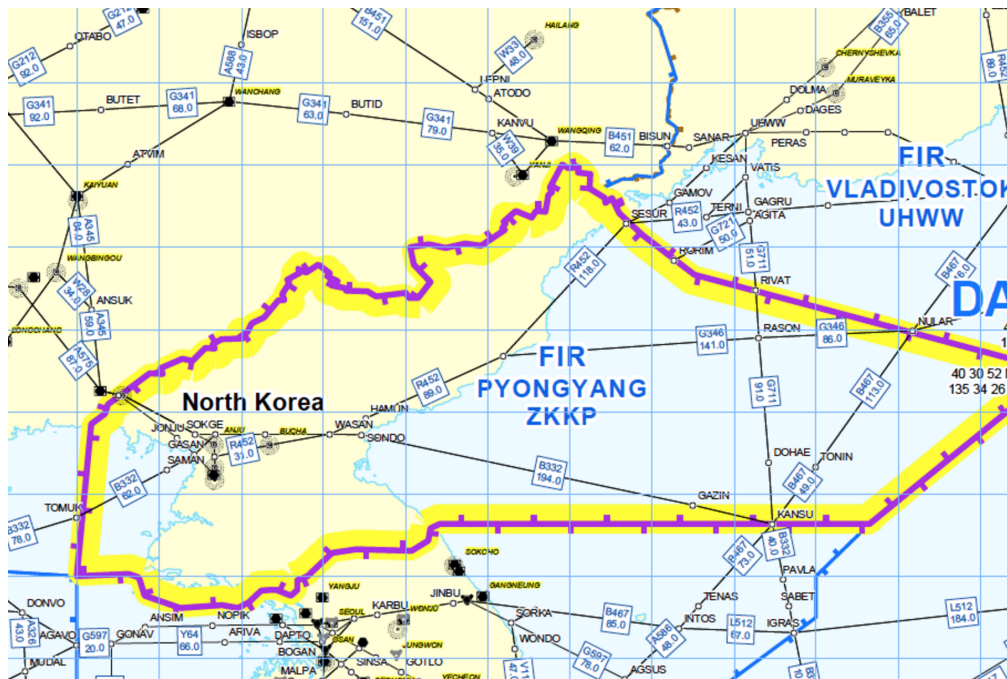
PLCH/Christmas Island has no JetA1 until 17APR. Elsewhere in the Pacific, PKMJ/Majuro has no fuel 21-25MAR, and PTPN/Pohnpei is out of supply until 28MAR.

SVMI/Caracas On 19MAR, assailants on a motorcycle shot a man who had recently arrived on a flight from Germany – while resisting a robbery attempt as he was walking along an outside corridor near a terminal at Caracas' Simon Bolivar International Airport (SVMI/CCS).

[View the full International Bulletin for 23MAR2016](#)

North Korea overflight getting riskier

Mark Zee
19 April, 2016



Update: FSB removed North Korea warnings on May 14, 2018

The annual posturing between the **DPRK (North Korea)**, and the US/South Korea, follows a fairly regular pattern each year. The cycle involves escalating threats (by both sides), a cooling off process, a long period of nothing, and then a resumption of threats. History tells us that there is nothing to fear, because this is always the way it works on this peninsula, but then a slightly less micro view also tells us that we don't always make the correct risk assessment.

Prior to MH17 (B777 shootdown, Ukraine), our view of missiles in the commercial aviation community was a little casual. Post-incident, the rule of 'overflights are safe' as a standing principle was removed, and suddenly a whole lot more interest was applied to what was going on underneath the airways, even if we were up at FL350.

In specific terms, **over the last fortnight**, North Korea has been launching short and medium range missiles like they are going out of style. Nobody in Pyongyang has any intention of aiming them at civil airliners, but the objective is not where the risk lies. Late last year when Russia fired 30+ missiles into Syria, at least 5 of them went off course (including way above where they should have flown).

This wayward tracking is the greater part of our concern, for all flights within the Pyongyang FIR (ZKPP). Most international overflights are using the North-South airways over water to the east of the landmass, and it's worth considering that the missiles launched in the last week have been directed out over the sea in this direction (not coincidentally in the direction of Japan, who isn't on the DPRK Christmas card list either).

US Operators are in any case restricted by **SFAR79**, but everyone else should be keeping a close eye on their North Korean overflight plans. (If this hasn't put you off, **you can read the full North Korea overflight permit requirements**).



Australian Airport Strike cancelled

Mark Zee

19 April, 2016



Announced this morning, Wednesday 23MAR: Australia had been set up for a week of Airport Chaos over the Easter Break, with Border Protection and other government services planning a huge list of strikes – but the events in Belgium yesterday prompted a cancellation of the strike.

Some airport staff have already been engaged in stop work action at airports in Cairns, Townsville, Perth, Darwin and Adelaide as part of the two-year battle over pay and conditions.

Bigger disruptions were anticipated tomorrow when staff at major international airports in Sydney, Melbourne and Brisbane were going to mount a 24-hour strike starting at midnight.

Earlier today Prime Minister Malcolm Turnbull urged the Community and Public Sector Union to reconsider,

following the attacks in Brussels. The union has now confirmed it has instructed staff not to strike, and attend work as normal.

According to a statement, National Secretary Nadine Flood said the decision was made after the Prime Minister's comments. Earlier Mr Turnbull told Channel 7 he had been assured that there would be adequate security at the airports, but he pressured the union to retract its plans.

Midweek Briefing: High Seas Airspace, Canada New Entry Rules

Cynthia Claros
19 April, 2016

**INTERNATIONAL
BULLETIN**

ISSUED BY FLIGHT SERVICE BUREAU
SITA HNLFSXH AKLFSXH AFTN KMCOXAAL
EMAIL INTL.DESK@FSBUREAU.ORG



High Seas Airspace - near misses 16MAR The Baltic Sea (Scandinavia) is seeing an alarming rise in traffic proximity events, and ICAO has issued guidance to operators with background and information. Military flights operating under 'due regard' are, well - not. **Read the full article** about High Seas airspace.

Canada New Entry Rules - relaxed 16MAR The new Canada Entry Rules - requiring most visitors to have an eTA before departing - came into force yesterday; with a caveat. In short: you should have one, but it's OK if you don't - at least until September 2016. **Read the full article.**

Cxxx/Canada The new Canada Entry Rules - requiring most visitors to have an eTA before departing - came into force on 15MAR; with a caveat. In short: you should have one, but it's OK if you don't - at least

until September 2016. Read the full article.

Cxxx/Canada Effective 30MAR, Canadian rules will no longer require an approach completely independent of GNSS at the planned destination. However, where a GNSS approach is planned at both the destination and the alternate, the aerodromes will need to be separated by a minimum of 100 NM. Refer AIC5/16.

Baltic Sea Based on several concrete examples of missing flight plans, the Russian Federation, Finland and Estonia agreed to define 7 new waypoints for State aircraft operations over the High Seas that could be used, to replace the current string of LAT/LONG coordinates, to facilitate all future FPLs between St. Petersburg FIR and Kaliningrad FIR. The ICAO Secretariat assigned the following 5LNCs: PISIS-PIDINPISIM-PIRUX-PINIX-PIVAX-PIPOM. All involved States (Russian Federation, Estonia, Finland and Latvia) agreed to implement/publish these waypoints (all over the High Seas), for the 30 MAR 2016 AIRAC date. Read the High Seas Airspace article.

North Atlantic CPDLC and ADS-C services will be out of service in Gander, Shanwick, Shannon and Reykjavik FIRS on 21MAR for periods lasting no longer than a few hours due to Inmarsat satellite replacement work. Please check the FIR NOTAM's that pertain to your operation that day.

Kxxx/United States Due to a missile launch from within Miami Airspace the FAA has issued NOTAM A0366/16 to advise of the potential impact to operations with KZMA, KZMY and TJSJ FIRs from March 16 to March 17th. Please check the NOTAM for full details on all the possible routing constraints.

LTXX/Turkey NATO has begun surveillance within the Turkish FIR as part of assurance measures for Turkey. The first duty period was 12-15MAR.

Time Changes Clocks go forward/back depending on whether you've just had a long winter or a long summer. The US changed on 13MAR, most of Europe is on 27MAR, Australia and NZ on 03APR. TimeandDate.com has a very useful list.

KTEB/Teterboro A new Charted Quiet Visual Runway 19 visual approach will be published on 31MAR. Starting 04APR, the FAA will test the procedure for 180 days to gauge pilot compliance and environmental impact to determine if the procedure will become permanent.

YMLL/Melbourne will host the Formula 1 Grand Prix 17-20MAR, with additional traffic to both YMLL and YMEN/Essendon during these dates.

KATL/Atlanta Officials in Atlanta are laying the groundwork for an expansion of the world's busiest airport. Work will begin soon on a \$6 billion expansion and renovation project at Hartsfield-Jackson Atlanta International Airport. Workers will update the domestic passenger terminal and concourses, and add a sixth runway and a hotel. Work begins on concourse renovations later this year.

Lxxx/Austria has issued AIC 4/16 outlining the near future use of more direct Free Route Airspace.

Oxxx/Iran The U.S. State Dept issued a Travel Warning to reiterate and highlight the risk of arrest and detention of U.S. citizens, particularly dual national Iranian-Americans, in Iran, and to note that FAA has advised U.S. civil aviation to exercise caution when flying into, out of, within, or over the airspace over Iran.

NVVV/Port Vila Runway 11/29 will be closed from 16MAR at 1300Z until 17MAR at 1930Z for maintenance. This essentially closes the airport during the time period.

Yxxx/Australia A reminder that Easter travel could be severely disrupted with Border Force and Immigration staff at international airports across Australia planning to take strike action on the eve of Good Friday.

UIBB/Bratsk Don't go. No fuel. Until 31MAR.

Midweek Briefing: Australia Airport Workers Strike, ICAO Toughens Aircraft Tracking

Cynthia Claros
19 April, 2016

**INTERNATIONAL
BULLETIN**

ISSUED BY FLIGHT SERVICE BUREAU

SITA HNLFSXH AKLFSXH AFTN KMCOXAAL
EMAIL INTL.DESK@FSBUREAU.ORG



Australia Airport Workers Strike 09MAR The Community and Public Sector Union (CSPU) announced the possibility of a strike during the week of 21 March, as well as three weeks of rolling airport strikes by Border Force and Immigration Department staff at international airports across the country. Airport staff members are expected to begin a work stoppage on 24 March, to coincide with the Easter holiday weekend, and will walk off the job at airports, freight terminals and other related sites. The work stoppages will be held to protest wage freezes and work conditions. Further details are likely to emerge closer to the strike.

ICAO Toughens Aircraft Tracking while in distress 02MAR The ICAO has announced new requirements for the real-time tracking of civilian aircraft in distress, following the disappearance of Malaysia Airlines flight MH370 two years ago. The ICAO's governing council approved proposals for planes to carry tracking devices that can transmit their location at least once a minute in cases of distress. Aircraft operators will have to ensure their flight recorder data is recoverable, while the duration of cockpit voice recordings is being extended to 25 hours, ICAO said in a news release. These changes will take effect between now and 2021.

United States Visa Waiver Program Passport Requirements Take Effect April 1. Visa Waiver Program (VWP) travelers must present an e-Passport containing a biometric chip in order to enter the United States

visa-free after March 31, 2016. VWP travelers who do not hold an e-Passport should apply for a new passport as soon as possible to ensure that they can continue to use the program without interruption. The e-Passport requirement applies only to VWP travelers; it does not affect holders of U.S. visas.

Canada Electronic Travel Authorization Deadline Relaxed It has been announced that visa-exempt nationals who plan to enter or exit and re-enter Canada by air will be able to board their flight without an Electronic Travel Authorization (eTA) from March 15, 2016 until fall 2016.

India has extended its e-Tourist Visa program to applicants from 37 additional countries. Also, the visa-on-arrival program for certain Japanese nationals who are unable to apply for a regular or electronic visa has been relaxed to allow multiple visits per calendar year. Lastly, the deadline for Person of Indian Origin card holders to apply for the Overseas Citizen of India card in lieu of Person of Indian Origin card has been extended until June 30, 2016.

Ecuador The Ecuador's Geophysical Institute reported that the Tungurahua volcano has experienced a series of eruptions. Pyroclastic flows and fallen ash have collected near the crater. During past eruptions, the volcano's clouds of ash have disrupted flights to major airports in the region.

KZWW/New York Oceanic has issued NOTAM A0105/16 advising restrictions to routings in the WATRS PLUS area due to the (QVR) Oceana Radar being U/S on March 9th and March 10th between the hours of 14-22Z. The restrictions are issued as follows:

Northbound: L453 will be closed.

Southbound: M201 will be clsd btn int atugi and hanri.

Only aircraft equipped with operational ADS-260B out may use the following routes:

Southbound: L453 between LEXAD and ONGOT

North-eastbound: M201 between HANRI and ATUGI

All ADS-260B out aircraft must file an icao flight plan.

UIBB/Bratsk issued a NOTAM restricting the arrivals to only scheduled services due a fuel shortage until March 31st.

PKMJ/Majuro (Marshall Islands) Monthly tanker replenishment is planned for Mar 21-25. During this time, fuel will not be available.

VTSP/Phuket, Thailand has issued a NOTAM advising that the parking of private aircraft is prohibited overnight until April 25th.

Nigeria has experienced a country wide fuel shortage. Please check with your handler ahead of time to ensure fuel is available. Tankering is highly recommended until further notice.

LCCC FIR/Nicosia FIR Late notification of a military exercise in LCCC ACC starting on 09/03/2016 0300 UTC until 11/03/2016 1000 UTC. Exercise areas and route closures announced by following NOTAMs:

A0191/16 through A0196/16, A0208/16 and A0209/16 for area specifications. A0215/16 through A0220/16 for the route closures.

Please see the following graphic outlining the area:



[View the full International Bulletin 09MAR2016](#)

Midweek Briefing:EU Border Controls Expanded, New NAT Plotting Chart published

Cynthia Claros
19 April, 2016

INTERNATIONAL BULLETIN

ISSUED BY FLIGHT SERVICE BUREAU

SITA HNLFSXH AKLFSXH AFTN KMCOXAAL

EMAIL INTL.DESK@FSBUREAU.ORG



EU Border Controls expanded 02MAR Travellers and crews operating to Denmark, Belgium and other EU countries will need to present travel documents to enter from another Schengen country. The security checks will likely cause travel delays for EU and non-EU travellers into the Schengen area.

New NAT Plotting Chart published 02MAR With the multitude of changes on the North Atlantic in the last few months, including new Tracks, end of MNPS, new HLA, RNP4 – we have published an **updated and revised Plotting Chart** for the NAT region, showing all new requirements and with updated Airport and Fuel pricing. It's effective 03MAR.

VOXX/India has expanded its e-Tourist Visa (eTV) program to applicants from 37 additional countries. Eligible visitors under the eTV include business visitors and those traveling to sightsee, visit friends or relatives or to make short medical visits. Nationals from a total of 150 countries are now eligible for the program.

EXXX/Europe Due to the introduction and continuation of border controls in the European Union, travellers to Denmark, Belgium and other EU countries will need to present travel documents to enter from another Schengen country. The security checks will likely cause travel delays for EU and non-EU travellers into the Schengen area. Belgium has instituted border controls at its borders with France. The security checks will remain in place until at least 23MAR.

KTEB/Teterboro will close 0500-1700Z (12 hour closure) this weekend – from midnight Saturday until noon Sunday. This closure is necessary to install new, mandatory hold short signs on Runway 19, which will close the runway intersection. Helicopter operations will be permitted during the closure.

HKXX/Kenya A visa on arrival is now available again at Nairobi, reversing the previous procedure established last year forcing all visitors to obtain one prior to flying. Online visas are still available. <http://evisa.go.ke/evisa.html>

NFXX/Fiji As of 25FEB, there are 42 confirmed deaths in Fiji due to the damage caused by Cyclone Winston, which made landfall over the 20-21 February weekend. Approximately 35,000 people are

sheltering in evacuation centers. There has been little to no contact with remote islands; therefore, the number of casualties and people displaced is likely much higher. Concern about the outbreak of mosquito-borne viruses, such as Zika and dengue fever.

WAXX/Indonesia Australian DFAT updated its travel advice for Indonesia, which reads: “We advise you to exercise a high degree of caution in Indonesia, including Jakarta, Bali and Lombok, due to the high threat of terrorist attack. We continue to receive information that indicates that terrorists may be planning attacks in Indonesia”

SKXX/Colombia is introducing ADS-B, with associated new phraseologies that crew should be aware of. ATC may ask “Notify capacity ADS-B”; response “ADS-B transmitter”, “ADS-B Receiver”, or “Negative ADS-B”. Full AIC.

LOWW/Vienna has a couple of new RNP AR (Authorisation Required) approaches to RWY 16 and 34 on test.

LIXX/Italy is joining the Free Route Airspace (FRA) bandwagon, airspace trial this coming weekend 05-07MAR at FL370 and above in Roma, Milano, Padova and Brindisi ACC, and Malta ACC.

UKXX/Ukraine Did you know that there was reduced horizontal separation in Ukraine airspace (RHSM)? Neither did we. Check out AIC 02/16.

UIBB/Bratsk has fuel supply issues again, current shortage until 31MAR.

View the full International Bulletin 02MAR2016

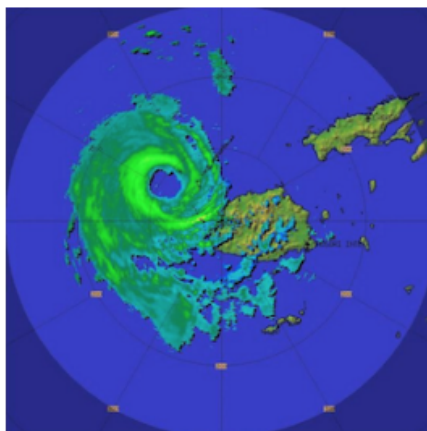
Midweek Briefing: New Wake Turbulence Categories, Fiji Cyclone Winston

Cynthia Claros
19 April, 2016

INTERNATIONAL BULLETIN

ISSUED BY FLIGHT SERVICE BUREAU

SITA HNLFSXH AKLFSXH AFTN KMCOXAAL
EMAIL INTL.DESK@FSBUREAU.ORG



New Wake Turbulence Categories 24FEB New Wake Turbulence Categories will begin a slow introduction in Europe on 22MAR at Paris Airports LFPG/De Gaulle and LFPB/Le Bourget, where the current four (Light, Medium, Heavy, Super) will become six. Those six new categories are Light, Medium (with Lower and Upper), and Heavy (with Lower, Upper and Super). Read the full article ...

Fiji Cyclone Winston 24FEB Fiji sustained widespread damage throughout the Islands on 21FEB from Tropical Cyclone Winston; most airports are open and operating again, including all international airports (NFFN/Nadi, NFNA/Suva). The following domestic airports are also open: Kadavu, Labasa, Rotuma, Labasa, Rotuma, Gau, Kadavu. NFNA/Suva has no overnight parking available at present due to congestion caused by the Relief effort.

NFFN/Nadi, Fiji Hit by Tropical Cyclone Winston on 21FEB, while there is widespread damage throughout the Islands, most airports are open and operating again, including all international airports (NFFN/Nadi, NFNA/Suva). The following domestic airports are also open: Kadavu, Labasa, Rotuma, Labasa, Rotuma, Gau, Kadavu. Note that NFNA/Suva has no overnight parking available at present due to congestion caused by the Relief effort.

KAGS/Augusta, USA Special Procedures in place 07-10APR for US Masters Golf Tournament.

EXXX/Europe New Wake Turbulence Categories will begin a slow introduction in Europe on 22MAR at Paris Airports LFPG/De Gaulle and LFPB/Le Bourget, where the current four (Light, Medium, Heavy, Super) will become six. Those six new categories are Light, Medium (with Lower and Upper), and Heavy (with Lower, Upper and Super). The rules are part of the RECAT-EU project, with the intention of squeezing more traffic into busy European Airports by applying more precise turbulence separation rules. The separation minima are determined specific to each Aircraft Pair. For example, at the moment, an A330 following a B777 (Heavy behind heavy) requires 4 miles in trail. With the new rules, that is reduced to 3nm. An A320 can now follow 4 miles behind a B777, instead of the current 5nm. There are no Flight Planning Changes (continue to use /L,M,H,J for the ICAO Category). For crews, you'll notice the smaller separation, but there are no changes to callsigns or pilot obligations - for now. Read full article.

DRRR/Niamey FIR Air Traffic Control 48HR strike 24 and 25FEB. The ASECNA Contingency plan is

activated, with ATC provided by neighbouring ACC's Dakar and N'Djamena.

LTXX/Turkey We have received several reports that Overflight Permits, which were removed as a general requirement for non-scheduled flights in 2015, are being requested by Turkey for Business Aviation aircraft, specifically M- and VP- registrations. Reports welcomed to clarify to bulletin@fsbureau.org.

RCTP/Taipei Airport works on several parking positions may create availability issues from 04MAR-04APR especially for Airbridge gates. Check with handler.

LFPB/Paris Le Bourget Due WIP airport will be closed during 10 nights from 15FEB to 26FEB, every night from 2045 to 0500Z. No Medevac flights will be possible.

EPKK/Krakow Runway 07/25 is closed daily 2330-0430 until 03MAR.

UXXX/Simferopol FIR EASA published an updated SIB 2015/16 regarding the use of Simferopol FIR on 17FEB. The key change is the phased reintroduction of the use of Simferopol FIR for international transit traffic, on the basis of an evaluation of the high seas portion of the airspace (ie. outside the 12nm territorial limit of the Crimean Peninsula). This airspace provides routes UL851 and UM856 (Odesa South Sector), which since 17FEB are suggested by EASA for use by overflying traffic.

YMML/Melbourne will host the Formula 1 Grand Prix 17-20MAR, with additional traffic to both YMML and YMEN/Essendon during these dates.

EHAM/Amsterdam has changed the callsign of Schiphol Start-up to "Schiphol Planner".

OYAA/Aden, Yemen Airport closed and all flights cancelled since 21FEB due to security concerns.

NVTV/Port Vila On 17FEB local officials signed an agreement with a private contractor to begin repairing the runway. Several airlines suspended flights on 23JAN due to safety concerns with the airport's runway. Aviation officials stated that the renovations should begin in March.

[View the full International Bulletin 24FEB2016](#)

Midweek Briefing: Residual Disinsection for Italy, New Moscow Airport

Cynthia Claros
19 April, 2016

INTERNATIONAL BULLETIN

ISSUED BY FLIGHT SERVICE BUREAU

SITA HNLFSXH AKLFSXH AFTN KMCOXAAL

EMAIL INTL.DESK@FSBUREAU.ORG



Italy now requiring Residual Disinsection 17FEB In light of the spreading global coverage of Zika Virus cases, countries are rapidly changing rules related to Quarantine and Health. Italy is now requiring residual aircraft disinsection for every aircraft coming from any area, not only Zika affected ones.

Moscow Ramenskoye opens to civil traffic 17FEB UUBW/Moscow Ramenskoye, which previously served as a military airfield, is scheduled to open to civil traffic as an International Airport on 16MAR, becoming the fourth Moscow Airport. **Read more ...**

UUBW/Moscow Ramenskoye, which previously served as a military airfield, is scheduled to open to civilians as an International Airport on 15MAR2016. The airport will be Moscow's fourth largest and is expected to serve approximately 1.9 million passengers per year. Russian Railways is planning on constructing a direct rail link between the facility and Moscow. Read the full article.

Worldwide As the mosquito-borne Zika virus spreads worldwide, some health and aviation authorities have begun targeting business aircraft to be treated with insecticide – similar to requirements that have been in place for commercial aircraft arriving from certain points of origin. The most prominent to date is Italy, which has reported several recent cases of the Zika virus affecting people who returned from trips to South America and the Caribbean. A "Certificate of Residual Disinsection" is now required for all aircraft operating in Italy, following recommended WHO and International Civil Aviation Organization Annex 9 procedures. Italy had originally limited the certificate requirement to aircraft arriving from Zika-affected countries, but "within 36 hours that changed" to all countries. Authorities in Costa Rica are requiring that aircraft arriving from affected countries be sprayed on arrival – with crew, passengers and luggage aboard – with an insecticide provided by the local agriculture department.

UADD/Taraz, Kazakhstan has been upgraded to RFF/Rescue Fire CAT9, and with regular international flights starting in June, should have customs available. Maybe become a useful Central Asian en-route

alternate.

UKLV/Lviv FIR, Ukraine A new Notam (A0193/16) is issued to extend the ban in Ukrainian Airspace of any aircraft operator registered in the Russian Federation until 09MAY.

NWWW/Noumea has multiple runway (and therefore airport) closures until 25FEB, check Notams carefully if operating.

NZAA/Auckland Work is currently in progress on the threshold of RWY 23L with the threshold inset 2,270m. The information is contained within AIP updates and not via NOTAM. Operators should note there is are no ILS approaches available at Auckland until 30MAR. While weather is usually very good during February and March operators can expect delays in poor wx.

NZQN/Queenstown is closed from 1800 each day until 31MAR for runway widening works.

AYPY/Port Moresby Telecoms outage continues. To contact ATC Centre use (675) 325 8704 instead of published numbers. Multiple VHF freqs out of service, use HF 5565 as alternate.

RPHI/Manila has a radar outage on 18-19FEB meaning procedural control will affect the Luzon island area within the FIR, 10/15 minute enroute separation as standard.

Somalia A local terrorist organisation claimed responsibility for the bombing of a Daallo Airlines passenger aircraft on 02FEB shortly after it took off from Mogadishu's Aden Adde International Airport (HCMM/MGO). The bombing forced the Airbus A321-111 to make an emergency landing at Mogadishu's airport.

South Africa Refurbishment will affect Johannesburg's OR Tambo International Airport (FAOR/JNB) beginning 13FEB when security and immigration will move from Terminal A to the Central Terminal. Slow processing expected until end March.

US and Cuba advance Air Service agreement US officials will travel to Havana to officially sign the agreement that will make the two countries a step closer for its first commercial flights. Once the US-Cuba air travel pact that was agreed upon on 16DEC2015 will be finalized, airlines will have about two weeks to submit applications for US-Cuba routes with the US Department of Transport and get approval from Cuban authorities to obtain space at Cuban airports. Industry experts expect that the first Cuba-bound flights will be in the air sometime in 2016.

View the full International Bulletin 17FEB2016

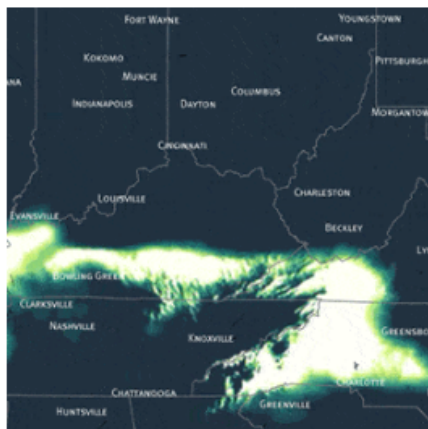
Midweek Briefing: New Canada Entry Rules, Winter Storms clear Newfoundland

Cynthia Claros
19 April, 2016

INTERNATIONAL BULLETIN

ISSUED BY FLIGHT SERVICE BUREAU

SITA HNLFSXH AKLFSXH AFTN KMCOXAAL
EMAIL INTL.DESK@FSBUREAU.ORG



New Canada Entry Rules 10FEB CXXX/Canada Starting 15 MAR 2016, visa-exempt foreign nationals who fly to or transit through Canada will need an Electronic Travel Authorization (eTA). Exceptions include U.S. citizens and travellers with an existing visa, and commercial aircrew. **Read more ...**

Winter Storms clear Newfoundland 10FEB Nova Scotia and Newfoundland (CYQX, CYHZ, CYYT) have two severe Winter Storms passing through this week; Halifax will see up to 40cm of snow, affecting diversion choices on the North Atlantic. **The visualisation above** shows the US Winter storm at the end of January.

MKJK/Kingston FIR Jamaica, has ongoing issues with radar coverage and serviceability, leading to ad-hoc flow management procedures including 15 minute en-route separation, and 10 minute arrival separation at international airports. Latest update indicates this will continue throughout February. We have had several reports from international airlines of delays averaging around 1 hour on departure. Further reports welcome to bulletin@fsbureau.org.

SKED/Bogota ACC, Colombia is applying 20 minute spacing for northbound flights heading into Jamaican airspace due to the increasing delays there.

SPIM/Lima FIR Peru have published new Aircraft Interception procedures for Civil Aircraft. Probably worth a look – although, we must warn you, they are in Spanish only, and exceptionally lengthy. Maybe just double check that overflight permit and keep in touch with ATC instead.

North Atlantic As mentioned last week, effective 04FEB MNPS Airspace is replaced by HLA/High Level Airspace on the North Atlantic. A popular topic. RNP4 or RNP10 now required. Read our International Ops Notice 01/2016 or our blog post: Did you know MNPS is over?

NVVV/Port Vila, Vanuatu Several airlines have suspended operations here effective 01FEB16 over concerns as to the condition of the runway. Airport remains open without restriction.

PACD/Cold Bay has no Jet A1 Fuel available until 29FEB

HRYP/Kigali's runway is closed on a nightly basis from 0200-0700 local time (0000-0500 UTC) until 31MAR for repairs.

North Korea launched a long range rocket at 0031Z on 07FEB. According to preliminary reports, the rocket passed over the Japanese island of Okinawa and landed in the Pacific Ocean. US military officials stated that the rocket did not pose a threat to the United States or allies in the region. South Korean media reported that North Korea is preparing for another nuclear test and has the technology necessary for an inter-continental ballistic missile (ICBM).

AYPY/Port Moresby has a number of common VHF frequencies out of service because of a Telecomms fault. ATC advise to call them on HF HF 5565, 8861, 6622, or 8837, if able.

View the full International Bulletin 10FEB2016

A different map: Winter Storm

Mark Zee

19 April, 2016



Apart from the routine Flight Operations that we support at the **Flight Service Bureau**, we spend a fair bit of time building new things. Much of time, those things involve maps, and so we keep our eyes out for new ideas ... and we especially liked this graphic presentation of US Winter Storm Jonas at the end of January 2016.

We took the original and slowed it down a little, but what you'll see here is forecast data from NOAA's High Resolution Rapid Refresh Model to animate the storm's arrival in the Mid-Atlantic. The map shows water equivalent accumulated snow depth, or WEASD, which we can think of as the volume of water contained in the snow on the ground.



Midweek Briefing: Chinese Airport Delays, Eurocontrol NOP Changes

Cynthia Claros
19 April, 2016



Chinese Airport Delays 03FEB ZXXX/China This is the busiest travel week of the year in China, with millions travelling for the Chinese New Year on 08FEB. Winter storms are forecast to impose delays across central Chinese airports; those currently affected include ZWWW/Urumqi Diwopu, ZSNJ/Nanjing Lukou, ZGGG/Guangzhou, and ZHHH/Wuhan Tianhe.

Eurocontrol NOP Changes 03FEB There are some significant changes to the daily Eurocontrol Briefings effective this week. Network News is no longer, and the D-1 daily conference is also gone. Instead, an Initial Network Plan is published each day at 1700Z on the **Network Operations Portal**.

TTxx/Trinidad and Tobago The annual Carnival in Port of Spain will take place on 08-09FEB . Travel and tourism activities are expected to continue for up to two weeks after the celebration and will be busiest during weekends. 10FEB (Ash Wednesday) is expected to be the busiest day of the year at the Port of Spain airport.

EISN/Shannon FIR Correction ** Due to a number of flights deviating from clearances prior to exiting Shanwick OCA, flight crews are reminded that Eastbound route clearances issued by Shannon Control for aircraft **exiting** Oceanic Airspace apply from AGORI, SUNOT, BILTO, PIKIL, ETARI, RESNO, VENER, DOGAL, NEBIN, MALOT, TOBOR, LIMRI, ADARA, DINIM, RODEL, SOMAX, KOGAD, BEDRA, OMOKO, TAMEL AND LASNO. Flights shall not turn **before** these points. In other words: wait until you enter (** Thank you to Shannon ATC for pointing out the error in last weeks bulletin).

North Atlantic Effective 04FEB MNPS Airspace is replaced by HLA/High Level Airspace on the North Atlantic – extended with Bodø joining Shanwick, Gander, Reykjavik, New York, and Santa Maria. RNP4 or RNP10 now required. Read our **International Ops Notice 01/2016** or our blog post: **Did you know MNPS is over?**

Eurocontrol NOP Changes There are some significant changes to the daily Eurocontrol Briefings effective 01FEB. Network News is no longer, and the D-1 daily conference is also gone. Instead, an Initial Network Plan is published each day at 1700Z on the Network Operations Portal.

FMMM/Madagascar CAA have issued a reminder to inbound operators that a Passenger List must be sent 24 hrs prior to departure for Madagascar, by email to gdp@acm.mg.

MKJK/Kingston FIR Jamaica, has ongoing issues with radar coverage and serviceability, leading to ad-hoc flow management procedures including 15 minute en-route separation, and 10 minute arrival separation at international airports. Delays appear likely. Reports welcome to bulletin@fsbureau.org.

FHAW/Ascension Island is now operating at Rescue and Firefighting Category 8/RFF8.

United Kingdom Last week the UK Registered Traveller Service, which is the equivalent of the US Global Entry program, was expanded to include a few more countries: Hong Kong, Singapore, South Korea and Taiwan. Additionally, Bristol and Cardiff will be added to the list of participating airports.

MUXX/Cuba Flight crews of US based aircraft can now remain in Cuba with their aircraft when traveling to the island nation, instead of having to reposition immediately after offloading passengers. The change took effect on 27JAN, with new amendments to the Cuban Assets Control Regulations and Export Administration Regulations issued by the U.S. OFAC and BIS.

NCRG/Rarotonga, Cook Islands has new hours of ATC service: 2050 SUN-0400 MON, 1500 MON-1930 MON, 0530 WED-1400 WED, 2100 THU-1000 FRI, 2100 FRI-1000 SAT, 1400 SAT-1930 SAT, 0600 SUN-1130 SUN. These are UTC/Z Times, local is UTC-10. Raro is an important diversion airport in the South Pacific, especially for Easter Island and Tahiti. ATC is avail with 30 mins PN outside these hours (call +682 25890/71439).

EHAM/Amsterdam has raised the minimum vectoring altitude from 1200ft to 1600ft, which seems to spell an end to those super efficient 3 mile final approaches to 06. Still the best Terminal ATC in Europe.

Europe EASA has launched a 2 person cockpit survey to open discussion on the impact of their new recommended practice of always having 2 crew members in the cockpit.

PKMJ/Majuro, Marshall Islands – ExxonMobil will have no fuel during tanker replenishment, scheduled for 13-17FEB.

ZXXX/China This is the busiest travel week of the year in China, with millions travelling for the Chinese New Year on 08FEB. Winter storms are forecast to impose delays across central Chinese airports; those currently affected include ZWWW/Urumqi Diwopu Int'l, ZSNJ/Nanjing Lukou Int'l, ZGGG/Guangzhou, and ZHHH/Wuhan Tianhe.

ENGM/Oslo Oslo Airport has started supplying Air BP Biojet via its regular fuel hydrant system, naming three large European airlines as launch customers. It is now supplied from the main fuel farm, via common storage and distribution facilities, without the need for segregated infrastructure. Previously, it had to be provided by fuel truck.

DNKK/Kano ACC Nigeria, Area Radar Service is provided H24 from 04FEB.

View the full International Bulletin 03FEB2016

UK Registered Traveller service updated

Mark Zee
19 April, 2016



Those that enjoy waiting at Immigration can skip this article; for the rest of us, every additional measure in mitigating those delays are more than welcome. Last week the **UK Registered Traveller Service**, which is the equivalent of the **US Global Entry program**, was expanded to include a few more countries: **Hong Kong, Singapore, South Korea** and **Taiwan**. Additionally, Bristol and Cardiff will be added to the list of participating airports.

Good news then, especially with the revelation that the **target** processing time at life-sapping airports like London Heathrow is **45 minutes**. If you've had the pleasure to fly to LHR's American cousin, JFK, then you may well be among those who've waited in the 1-2 hour statistical range.

For positioning crews, airline staff, or anyone else that isn't eligible for the Duty Crew line – enrolling in a

couple of these programs will prove useful. Global Entry gets you automatic entry into TSA Pre✓® as well (which will come in handy when you discover that US Domestic queues for TSA are as long as the international ones ...)

Midweek Briefing: Mexico Volcano Eruption, Atlantic MNPS is over... Introducing HLA

Cynthia Claros
19 April, 2016



Mexico Volcano Eruption 29JAN Popocatepetl Volcano, which is 55 kilometres southeast of Mexico City, had its last major eruption in 2000; it erupted on Tuesday this week affecting flight operations at **MMPB/Puebla**, and with the risk of further eruptions affecting operations in Mexico City itself.

Atlantic MNPS is over... introducing HLA 29JAN Effective next week, 04FEB, there are another round of changes on the North Atlantic – HLA/High Level Airspace is the replacement for MNPS, and the airspace is extended with Bodø joining Shanwick, Gander, Reykjavik, New York, and Santa Maria. Read our **International Ops Notice 01/2016**.

North Atlantic Effective 04FEB MNPS Airspace is replaced by HLA/High Level Airspace on the North Atlantic – extended with Bodø joining Shanwick, Gander, Reykjavik, New York, and Santa Maria. RNP4 or RNP10 now required. Read our **International Ops Notice 01/2016** or our blog post: **Did you know MNPS is over?**

TTxx/Trinidad and Tobago The annual Carnival in Port of Spain will take place on February 8 and 9, 2016. Travel and tourism activities are expected to continue for up to two weeks after the celebration and will be busiest during weekends. February 10, 2016 (Ash Wednesday) is expected to be the busiest day of the year at the Port of Spain airport. February 8 to 9, 2016 is also expected to be a congested time for departures.

KSFO/Super Bowl 50 The FAA will not be imposing a slot-based special traffic management program for the game on 08FEB, but ramp reservations, made through specific FBOs, will be required for all arrivals and departures from 04-08FEB. The rule will apply to all airports in the region, including San Francisco International, Oakland International, Hayward Executive, Norman Y. Mineta San Jose International, Livermore Municipal, Buchanan Field, Napa County, Charles M. Schulz-Sonoma County, Monterey Regional, Watsonville Municipal and Salinas Municipal. NBAA has set up a Super Bowl 50 information page that includes links to the FAA arrival/departure routes.

Uxxx/Tajikistan The U.K.'s Foreign and Commonwealth Office (FCO) issued updated travel advice for Tajikistan that reads as follows: "In early September 2015, armed clashes involving security forces resulted in a number of deaths close to Dushanbe International Airport and in the Romit Valley not far from Dushanbe. While tensions have eased, security remains heightened. You should continue to take extra care, monitor the local media and check this advice regularly."

KFZZ/Falcon Field, Arizona In January and February, Runways 4R/22L and 4L/22R at Falcon Field Airport (FFZ) in Mesa, AZ will be closed non-concurrently for the taxiway ALPHA realignment construction project. These are hard closures with no potential for runway recall. Runway 4L/22R had closed Jan. 12, at 6 a.m. (1300Z) and will remain closed until Saturday, Jan. 30, 2016. Runway 4R/22L is expected to close Monday, Feb. 1, at 6 a.m. (1300Z) and remain closed until Sunday, Feb. 15.

Kxxx/United States A few weeks ago we reported on new FAA FDC NOTAMs that eliminate the need to obtain a TSA Waiver for domestic flights in the US. on 17JAN The FAA has corrected an error in these (in simple terms, they forgot to include some previously issued exceptions), and so there are 3 brand new NOTAMS effective - these are 6/4255, 6/4256 and 6/4260. Got some time?**Read the original NOTAMs in full.**

Mxxx/Mexico The U.S. Department of State warns U.S. citizens about the risk of traveling to certain places in Mexico due to threats to safety and security posed by organized criminal groups in the country. U.S. citizens have been the victims of violent crimes, such as homicide, kidnapping, carjacking, and robbery by organized criminal groups in various Mexican states. This Travel Warning replaces the Travel Warning for Mexico, issued May 5, 2015

EISN/Shannon FIR Due to a number of flights deviating from clearances prior to exiting Shanwick OCA, flight crews are reminded that Eastbound route clearances issued by Shannon Control for aircraft exiting Oceanic Airspace apply from AGORI, SUNOT, BILTO, PIKIL, ETARI, RESNO, VENER, DOGAL, NEBIN, MALOT, TOBOR, LIMRI, ADARA, DINIM, RODEL, SOMAX, KOGAD, BEDRA, OMOKO, TAMEL AND LASNO. Flights shall not turn before these points.

Uxxx/Russia The Russian Institute of Volcanology has issued a code orange alert after Russia's Zhupanovsky volcano began erupting earlier this week, sending clouds of ash and gas to 27,000 ft. A code orange advises pilots to avoid flying near the ash cloud, reportedly moving over the North Pacific Ocean driven by prevailing easterly winds.

UIII/Irkutsk has issued NOTAM A0134/16 closing RWY 12/30 weekly on Tuesdays from 1210-1450Z beginning Feb 02 and ending March 22. UIII is not available as an alternate during those times.

UHSS/Yuzhno is closed daily between 0330-0500Z due to preventative maintenance. No end date has been issued.

RPHI/Manila FIR has begun Phase 1-b of an ADS/CPDLC trail. The specific details of the plan can be found [here](#).

Wxxx/Indonesia As of 19JAN, Mount Egon has been erupting on Flores Island, which is located east of Bali Island. Egon emitted large amounts of ash and noxious gas. As of yet, the eruption has not caused any flight delays or cancellations; however, previous volcanic eruptions in the lesser Sunda Islands have caused extended delays in Denpasar and Mataram.

Zxxx/China Talks with the Zhuhai municipal government, Chinese government, Zhuhai Airport Authority and the Civil Aviation Authority China (CAAC) resulted in temporary International China Inspection and Quarantine (CIQ) services at Zhuhai Airport for non-scheduled business aviation movements. Following the approval late last month, China's National Port Administration Office opened a temporary customs port on January 1. The approval is renewable on a six-month basis. During the "approval period" from January 1 to June 30, crewmembers of foreign business aviation flights can enter and exit China via the temporary business aviation port at Zhuhai Airport.

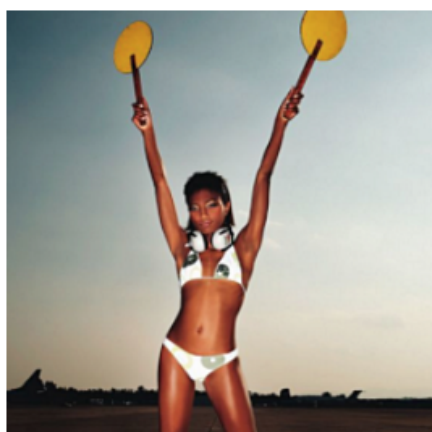
View the full International Bulletin 27JAN2016

Monday Briefing: Your Attention Please, US Airport Disruptions

Cynthia Claros
19 April, 2016

**INTERNATIONAL
BULLETIN**

ISSUED BY FLIGHT SERVICE BUREAU
SITA HNLFSXH AKLFSXH AFTN KMCXAAL
EMAIL INTL.DESK@FSBUREAU.ORG



Your Attention Please 18JAN As we reach 25,000 readers, **your help is requested**. We want to make sure we're delivering the best bulletin to you, so if you have a few moments, please **answer 3 questions**. You'll receive a gift token for use in the **Flight Service store**.

US Airport Disruptions 18JAN Airport workers plan disruptions in nine U.S. cities on MLK Day (Monday). Watch out for industrial action in Boston, New York City, Newark, Philadelphia, Miami, Chicago, Portland, and Seattle.

FJDG/Diego Garcia is closed from 15JAN to 19JAN.

WSSS/Singapore 2016 Airshow takes place 16-21FEB at Changi. Planning for parking, accommodation and when required permits should be arranged as early as possible.

LTBA/Istanbul is expecting a significant snow event on Monday. Commercial carriers have already preemptively canceled flights until the storm passes. Please check latest weather advisories and plan accordingly.

Kxxx/United States Airport workers plan disruptions in nine U.S. cities on MLK Day (Jan 18th). Watch out for industrial in Boston; New York City; Newark, N.J.; Philadelphia; Miami; Chicago; Portland, Oregon; and Seattle.

LSZH/Zurich Delays this week due to World Economic Forum in Davos.

KMCO/Orlando A two-phase runway construction project at is scheduled to begin 12JAN and continue into April 2016. Runway 17R/35L will be closed during phase one, and Runway 18L/36R will close during phase two.

TBPB/Bardados is closed nightly from 0400-1000Z UTC due to work on the ATS building from Jan 13th to Jan 28th. Airspace is also downgraded to Class G to FL245 on the 13th, 14th, 20th, 21st, 27th and 28th. Please see NOTAM A0030/16 for full details.

URSS/Sochi reports of low fuel availability, check with Airport for latest, tankering recommended regardless.

NZxx/New Zealand The Aviation Security Officers Union advised on 14JAN of a possible strike. The union identified no date for the possible strike. Airport officials stated that if security officers strike, the air transportation will come to a standstill nationwide.

VIDP/New Delhi Airspace closed to commercial flights for more than an hour every day beginning next week in view of the Republic Day celebrations. 1035-1215 local, on 19-24JAN, and 26JAN.

West Africa The World Health Organization announced last week that the Ebola epidemic in West Africa is officially over. For the first time since the outbreak began in December 2013, all three of the hardest-hit West African nations — Liberia, Guinea and Sierra Leone — have had zero reported cases of Ebola for 42 days in a row, a period equal to two full incubation cycles of the virus.

VHHH/Hong Kong According to reports on 13JAN, thieves targeted a South African national aboard South African Airways flight 286 from Johannesburg to Hong Kong on 21 December. The victim stated that a fellow passenger alerted him that other passengers had taken his baggage while he was sleeping and rummaged through it in the aircraft lavatory. When the victim subsequently inspected his baggage, he found that the lock had been broken and foreign currency worth approximately \$1200, as well as items of jewelry, were missing. Hong Kong police officers searched several suspects when the aircraft landed, but the stolen items were not found. This type of crime is reportedly a significant problem on international flights bound for Asian destinations, particularly Hong Kong. According to statistics released by Hong Kong authorities in August 2015, a total of 45 in-flight robberies had been reported up to that point in 2015; 48 cases occurred in 2014. Cash, jewelry and smartphones are especially targeted.

Lxxx/Turkey Foreign nationals filing certain visa applications at a consular post must now upload their application documents online through the Turkish electronic visa application system prior to appearing at a

consular post. Applicants must still submit their visa application forms and supporting documents in person at a Turkish consular post. This system does not impact electronic visas for those nationals eligible for E-visas, but does impact business visitors who must acquire a consular visa.

Int Ops Bulletin As we reach 25,000 readers, your help is requested. We want to make sure we're delivering the best bulletin to you, so if you have a few moments, please answer 3 questions. You'll receive a gift token for use in the Flight Service store.

[View the full International Bulletin 18JAN2016](#)

Monday Briefing: Saudi Arabia, Bahrain ban flights from Iran, New US Visa Waiver Restrictions

Cynthia Claros
19 April, 2016

INTERNATIONAL BULLETIN	ISSUED BY FLIGHT SERVICE BUREAU
	SITA HNLFSXH AKLFSXH AFTN KMCOXAAL EMAIL INTL.DESK@FSBUREAU.ORG



Saudi Arabia and Bahrain ban flights from Iran 11JAN Bahraini and Saudi Civil aviation have banned flights between Bahrain, Saudi Arabia and Iran. The Bahraini Civil Aviation Authority (BCAA) stated that it will work to resolve any disruptions as a result of the ban. Bahrain previously cut diplomatic relations with Iran, following the attack on the Saudi Embassy in Tehran.

New US Visa Waiver Restrictions 11JAN Several changes to the rules for the US Visa Waiver program are now in effect, restricting the moment of travelers having visited Iran, Iraq, Sudan, or Syria in the last 5 years. [Read more ...](#)

NFFN/Fiji A report released by the Disaster Management Office on 4 January 2016 stated that Cyclone Ula caused minor damage to Fiji. While the storm blew away iron roofs in Ono-i-Lau and Kabara islands, it did not cause significant structural damage or loss of life.

SBxx/Brazil Tourists from Australia, Canada, Japan and the United States will be eligible to travel to Brazil for the upcoming Olympics without a visa for up to 90 days for visits between 01JUN and 18SEP16, though no extensions will be available. Proof of Olympic attendance is not required for this visa waiver. Business travelers from these countries will still require business visas during this time. Eligible travelers should be sure to confirm the validity of their travel documents prior to their trips. After 18SEP, tourists from these countries will require tourist visas for entry.

LFL/Lyon Due to industrial strike affecting fuel providers at LFL (Lyon Airport). Aircraft Operators have been asked to tank in enough fuel for a round trip. LFL Airport can also not be used as alternate until 12JAN.

Cxxx/Canada Nav Canada has issued AIC 3/16 advising of a pending change to the credit that may be taken at alternate aerodromes for lateral navigation/vertical navigation (LNAV/VNAV) minima, when the aircraft is certified for barometric LNAV/VNAV.

KPHX/Phoenix Possible arrival and departure delays are expected on 12JAN due to extra passenger volume the day after the Alabama and Clemson football game. The airport expects an extra 30,000 departing passengers that day, boosting the total number of passengers to 150,000. In addition to regularly scheduled flights, at least 14 charter flights will depart.

Kxxx/Southern California SpaceX has scheduled a launch for Jan. 17. This launch will take off from Vandenberg Air Force Base in California. Please check local NOTAMs with KZLA (SOCAL) and KZOA (Oakland Oceanic) for any airspace closures.

Zxxx/China Chinese officials stated that they will allow departing flights to transit via Taiwan. Aviation officials will allow flights departing from Chongqing, Nanchang and Kunming to transit through Taipei's Taoyuan International Airport (RCTP/TPE).

Fxxx/Madagascar On 7 January 2016, Malagasy health officials reported statistics in an ongoing outbreak of the bubonic plague. Reports indicate that 63 fatalities and a total of 174 cases have been recorded since August 2015. Madagascar first alerted the World Health Organization (WHO) to this outbreak in September. A previous outbreak in 2014, which lasted until early 2015, resulted in 335 cases and 79 fatalities.

Dxxx/Nigeria The Nigerian Civil Aviation Authority (NCAA) has lifted the suspension it recently imposed on Acorn Petroleum Limited from supplying aviation fuel to domestic and foreign airlines at airports in the country. NCAA had suspended Acorn and four other oil marketing companies from supplying aviation fuel to local and foreign airlines operating in the country.

Vxxx/India The Indian government has approved a Memorandum of Understanding on Civil Aviation between India and Singapore.

View the full International Operations Bulletin 11JAN2016

Shanwick/Gander: New NAT procedure - Confirm Assigned Route

Cynthia Claros
19 April, 2016



Coming soon to an FMS near you will be a new standard message from Oceanic ATC: **“Confirm Assigned Route”**.

If you’ve operated on the ‘half-tracks’ in the NAT recently, you’ll have seen this. So, what’s it all about?

Short and simple: with the half-tracks, the potential for Nav Errors are now (quite a lot, perhaps) higher than before. Waypoints are that bit more complicated, and 5030N 30W is a little too similar to 50N 30W.

So, to prevent you reading back the clearance correctly and then screwing up the route in the FMS, Shanwick (and Gander from 01DEC16) will ask you via datalink **“What are you planning to fly?”** once you enter the Ocean.

All you have to do is ack the message, scroll through your route and check it looks OK, and send it back down to them. If it’s the same as your clearance, then that’s that. If not, or you don’t reply, you’ll get an additional telegram from Shanwick.

Each aircraft has a different FMS of course, so the good people at NATS have issued **AIC 071/16** to help you – it covers the A320-340, 350/380, and 75./76, 77. If you fly a business jet, one of those should be pretty similar to yours. And if you’re operating something a little older, keep the radio operators in Ballygirreen and Gander happy with a full position report.



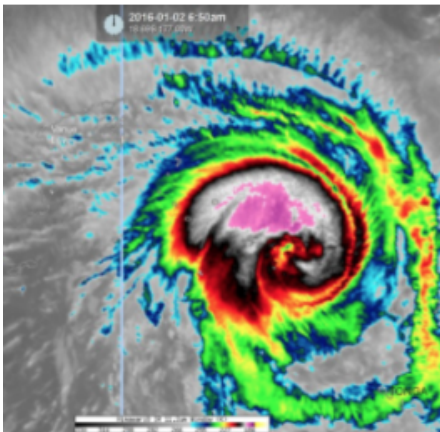
Monday Briefing: Cyclone Ula strengthens towards Fiji, TSA Waiver program changes

Cynthia Claros
19 April, 2016

**INTERNATIONAL
BULLETIN**

ISSUED BY FLIGHT SERVICE BUREAU

SITA HNLFSXH AKLFSXH AFTN KMCXAAL
EMAIL INTL.DESK@FSBUREAU.ORG



Cyclone Ula maintains strength towards Fiji The first tropical cyclone for 2016 is lashing Fiji's outlying islands, after causing destruction in parts of Tonga. Category three Cyclone Ula is bringing 150-kilometre-an-hour winds, strong gusts and heavy rain to the Lau group, in Fiji's eastern division. Fiji Met Service has the latest information.

TSA Waiver program changes 04JAN The requirement for foreign operators to obtain a TSA Waiver for domestic flights within the US has been dropped, but only for aircraft under 45 tons. See new Notams FDC 5/6289, 5/5782, and 5/5806.

OAKB/Kabul. Afghanistan At approximately 1100 local time (0630 UTC) on 04JAN an explosion was reported near Hamid Karzai International Airport (OAKB/KBL). According to police sources, the blast occurred when a suicide bomber in a vehicle detonated explosives at a police checkpoint near the airport. With the exception of the assailant, the bombing did not result in injuries or fatalities, and there was no indication that airport operations were affected.

South Pacific / Tropical Storm Ula located approximately 230 nm south-southeast of Suva, Fiji. The current intensity is assessed at 85 knots based on Dvorak intensity estimates ranging from 77-102 knots. The system is expected to slow significantly under a weak steering influence, before shifting northwest as

the ridge to the south begins to build.

UIBB/Bratsk A common Polar ETOPS alternate has issued a notice that non-scheduled aircraft must have prior permission due to fuel supply issues.

UIII/Irkutsk A common Polar ETOPS alternate. The main and only runway 12/30 is closed due to repair from 05JAN until 26JAN. Please see NOTAM A5600/15 for further details.

UDDD/Moscow Arrival of An-124 and B747 aircraft only by prior coordination with the Airport Company until March.

VHHK/Hong Kong International Airport opened a new \$10 billion concourse this week. The Midfield Concourse's 19 gates and 20 aircraft parking stands will allow the airport to handle an additional 10 million passengers per year and will serve approximately 20% of passenger flights once it begins operating at full capacity in March, Hong Kong International said. The five-story, 1.1 million-square-foot concourse sits between the airport's two existing runways and connects to Terminal 1 via an automatic people mover.

NFFF/Nadi FIR Until Jan 21/2016. Operators of RNAV equipped aircraft intending to operate within the NADI FIR shall plan using random routes only if the aircraft are equipped with RNP10 or better and must have HF. Non-RNP aircraft will be permitted to operate but will be required to flight plan vis published fixes air routes. Please see NOTAM A1521/15.

HSSS/Khartoum, Sudan has no Jet A1 available for Ad-hoc operations between 27DEC and 05JAN. Carry return fuel or choose another tech stop.

View the full International Operations Bulletin 04Jan2016

KVNY/Van Nuys: Vandals tag 3 different business jets

Cynthia Claros
19 April, 2016



27DEC Three business Jet aircraft were sprayed with graffiti on Sunday night (27DEC) at KVN/Van Nuys Airport, in Los Angeles. The aircraft belong to locally based Charter companies, according to law enforcement and aviation sources. Two years ago, a \$2.3-million Learjet suffered \$100,000 in damage after being spray-painted with graffiti in a secure area of the same airport. The LAPD said at the time that the crime was gang-related but no one was arrested.

Monday Briefing: Kanlaon Volcano Eruption, Colombia Permit requirements

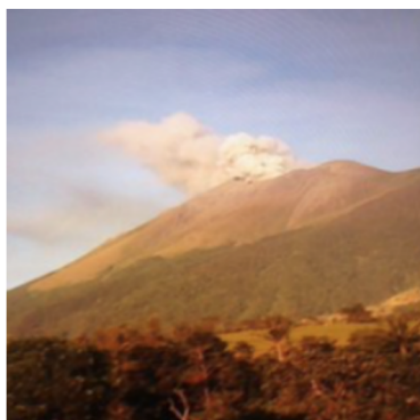
Declan Selleck
19 April, 2016

**INTERNATIONAL
BULLETIN**

ISSUED BY FLIGHT SERVICE BUREAU

SITA HNLFSXH AKLFSXH AFTN KMCOXAAL

EMAIL INTL.DESK@FSBUREAU.ORG



Kanlaon Volcano Eruption 28DEC The Kanlaon Volcano in the Philippines erupted on 27DEC, with an initial ASHTAM issued up to FL260. Extreme caution advised for airways B472, B473, and W7. You can get the latest updates through the Tokyo VAAC.

Updated Colombia Permit requirements 22DEC For Non-Commercial aircraft, ie. Ferry flights, General Aviation – authorisation is required only if stopping in Colombia longer than 48 hours, or operating to more than 1 Colombian Airport. **Updated list of document requirements** in AIP Supp 22/15 issued 22DEC.

New Years closures. Check opening times carefully during the next week, as many major airports and FBO's have closures, especially on 31DEC/01JAN.

Kxxx/USA Scattered thunderstorms, some of which will be strong to severe, will move east across Kentucky, Tennessee, eastern Mississippi, Alabama, western Georgia and the Florida Panhandle. Heavy rain will once again trigger flash flooding over portions of the South. Airports in the risk area include KATL/Atlanta, KBNA/Nashville, KMEM/Memphis, KCHA/Chattanooga, KBHM/Birmingham, KMOB/Mobile and KLEX/Lexington.

FYWH/Windhoek, Namibia has new opening hours from 23DEC, 0700-2000LT Daily.

HSSS/Khartoum, Sudan has no Jet A1 available to Ad-hoc operations between 27DEC and 05JAN. Carry return fuel or choose another tech stop.

MUFH/Havana FIR, Cuba Airspace restrictions in place 23DEC-31DEC due to staff shortages, airways UB760 and UL210 are northbound only, and between 1400-0100Z daily, all aircraft will be spaced 25nm apart through the Havana FIR, regardless of altitude.

OAKB/Kabul, Afghanistan a car bomb detonated near Kabul International Airport at approximately 0800 local time (0330 UTC) today. Taliban militants took responsibility for the attack.

UIBB/Bratsk continues to have fuel supply issues, fuel limitation extended to 12JAN

LSZH/Zurich has parking issues for Private flights, the Airport Company will generally only accept 6 hours ground time. Extended stays will require a reposition to another airport, limitation until 06JAN.

Space Weather/Polar Ops 55% risk of R1-R2 Minor to Moderate Radio Blackout risk predicted through Dec 30th. For the most up to date information please see the NOAA Space Weather Dashboard for Aviation.

LTFJ/Istanbul A Kurdish militant group has claimed responsibility for an attack at Istanbul's second airport that killed 1 person, and threatened more assaults.

FAA/North Atlantic Aircraft operators crossing the North Atlantic have been required to include the aircraft registration and six-character hexadecimal code that is the aircraft's address in Item 18 of their ICAO flight plans. However, an FAA review of flight plans filed during a one week period revealed that many operators were not meeting this requirement. Therefore, the agency has issued Information for Operators (InFO) 15015, which emphasizes the importance of providing the required information in the proper format.

Vxxx/India Signaling a major shift in granting air traffic rights, the government is looking at restricting the number of landing points for overseas airlines irrespective of their seat entitlements. A senior Civil Aviation Ministry official said it was looking at restricting the ports of call given to foreign airlines under bilateral rights, while remaining flexible on seat entitlements.

VAJB/Jabalpur The Aviation regulator DGCA has suspended the license of Jabalpur airport following an incident early this month, in which a herd of wild boars marched onto the runway during the taxiing of a commercial aircraft. Following suspension of its license, no flight operations can take place from Jabalpur airport, sources said adding that the AAI has been told to remove deficiencies including proper fencing of the operational area.

RKxx/South Korea South Korea's Ministry of Health and Welfare has formally declared an end to the Middle East Respiratory Syndrome (MERS) health threat on December 23. According to the Ministry of Health and Welfare, its decision follows World Health Organization. MERS was first confirmed in South Korea on 20MAY, and the last fatality from MERS-related complications in the country occurred on 25NOV.

Monday Briefing: Cuba Travel opens up, Chile Airport strike ends

Declan Selleck
19 April, 2016

INTERNATIONAL BULLETIN	ISSUED BY FLIGHT SERVICE BUREAU
	SITA HNLFSXH AKLFSXH AFTN KMCXAAL EMAIL INTL.DESK@FSBUREAU.ORG



Cuba Travel opening up 21DEC Negotiations between the USA and Cuba on scheduled air services between the two countries are progressing at pace; meaning that we expect to see sanctions on private US Tourism Travel lifted as early as next March. See more below.

Chile Airport Strike ends 21DEC A four day strike was ended yesterday 20DEC in Chile by the Trade Union, as 3000 Airport workers across the country responded to the governments rejection of a pension plan. Several hundred flights were cancelled. Non-scheduled operations were largely unaffected, but the risk of further action remains.

HUEC/Entebbe ACC, Uganda. ATC in Uganda is reporting a significant increase in the number of flights entering their airspace without prior coordination from Sudan and Congo (Khartoum and Kinshasa FIRs). Regional ATC in Africa is known to be challenging, but this warning deserves attention. Crews should make all efforts to contact each FIR 10 mins in advance – HF 11300, or relay on 126.9 if unable.

KZMA/Miami FIR SpaceX announced Sunday it has pushed back its planned launch of a Falcon 9 rocket with 11 communications satellites to 2033 ET Monday. KZMA has issued NOTAM A1357/15 for launch. It will also affect the KZJX Jacksonville FIR and TJZS San Juan FIR. The FAA will also issue tactical advisories regarding the launch and will most likely restrict operation on AR6 and AR15.

EGGX/Shanwick have issued a reminder to flights operating on the “Tango Routes” (T9, T16, T213) that HF in all cases is required to operate here, and crews should be trained in the procedures. Request OCA Clearance 50 mins in advance. Primary/Secondary HF freqs: Southbound 6547/8879, Northbound 8879/6547.

LIPH/Treviso Fuel spillage on the runway has closed the airport until 1700Z today 21DEC.

Cuba and USA Reports in the international media last week indicated that an agreement between Cuba and the US is likely to be signed early next year, allowing up to 110 scheduled flights: 20 to Havana, 10 to each of the other 9 international airports in Cuba. At present, US visitors must still fall in to one of the 12 official categories for authorised travel; however, once scheduled services are in place, we anticipate this to be the leverage to remove the final hurdle for US citizens – visiting Cuba for tourism. The first flights will likely operate in early March.

It should be noted that there are no restrictions on the Cuban side. US Aircraft can land in Havana with a routine **Landing Permit issued by IACC**, and US Aircraft can overfly with a routine **Overflight permit**. We anticipate that the requirement for a permit will stay in place as this is routine in most Latin American countries, primarily to check Navigation Fee debts and Operator Profile.

Georgia and Ukraine On 18DEC2015, the EC announced that both Georgia and Ukraine meet requirements for being granted visa-free travel to the European Union’s Schengen zone. However, the European Parliament and the EU member states must vote in favor of granting Georgia and Ukraine visa-free travel before they are able to do so. Reports indicated that the decision could be put to a vote as early as 2016.

Haiti On 19DEC, election-related demonstrations across Haiti turned violent amid accusations of electoral fraud. Violent clashes led to the burning of several government buildings. Haitian police officers stated that they were trying to restore security to the country.

Space Weather/Polar Ops moderate an ongoing G1 geomagnetic storm expected for Mon, Dec 21. Please check the NOAA Space weather aviation dashboard for the latest actuals and predictions [HERE](#).

PAZA/Anchorage ARTCC has a number of new procedures and systems in place effective 17DEC, including 30/30 RNP4 separation, an update to the Track Advisory program for westbound Russian Tracks, and standard routings. Check the current PAZA NOTAMs for complete information.

ZBAA/Beijing authorities have issued a red alert for high levels of air pollution and reduced visibility. The alert will be effective until 22DEC. According to China’s National Meteorological Center, air pollution levels are forecast to be slightly higher than those recorded from 06-09DEC.

EGLL/EGKK London Heathrow/Gatwick Airport train links will be disrupted over Christmas. The Gatwick Express trains will stop running for 10 days due to engineering works, with the last service of 2015 leaving Victoria station at 9.15pm on Christmas Eve and the first services of 2016 scheduled for 4 January. At Heathrow, the usual one-day closure on Christmas Day will be extended by three days. Neither Heathrow Express nor Heathrow Connect trains will run from London Paddington station during the period.

UBxx/Azerbaijan will become part of the IFPS (Integrated Flight Plan System) zone as of AIRAC 1601 on 07JAN2016. Azerbaijan will delegate responsibility for the provision of flight planning services for IFR/GAT flights within the Baku FIR to the Network Manager's Integrated Initial Flight Plan Processing System. For more info see Azerbaijan AIC 01/2016 Series A, AIP ENR 1.10, AIP ENR 1.11 and NOTAM A0126/15.

UHPP/Petropavlovsk FIR Volcano Karmasky has recently been active with ash reported up to 15,000 ft and possibly affecting ops on R220. Please check for the latest Tokyo VAAC advisories.

The ICAO Council adopted a new tracking standard for certain international flights that requires crews to report their aircraft's positions at least every 15 minutes. It will become effective in March 2016 and applicable 08NOV2018. The new requirement also will be formalized as Amendment 39 to Annex 6—Operation of Aircraft, Part I. Only aircraft with a maximum takeoff weight of more than 59,000 pounds and a passenger seating capacity of more than 19 are affected by the rule. Also, the requirement applies to over oceanic and other remote areas, and where air traffic service is obtaining position information greater than 15-minute intervals.

Christmas and New Years closures. Check opening times carefully during the next 2 weeks, as many major airports and FBO's have closures, especially on 24, 25, 26DEC and 31DEC/01JAN.