

FAA rescinds Turkish ban - ops normal

Declan Selleck

16 July, 2016



Update: 18JUL - KICZ NOTAM cancelled, the restriction mentioned below is lifted ...

This article contains restricted content ... full article available to OpsGroup members.

Following the attempted coup in Turkey on 15JUL, **the FAA has banned all US airlines**, commercial operators, and pilots from flying into Turkey until the 1st of September, and says it will review that position on August 15th.

The ban applies to all airport within the Istanbul (LTBB) FIR and the Ankara (LTAA) FIR - which together cover the entire country, but does not prohibit entry into the FIR's or overflying Turkey.

Further more, **no direct flights are allowed between Turkey and any US Airport**. This is independent of the country of registry of the aircraft, and so applies to all operators, N-reg and others.

Specifically, the ban affects all US Airlines and Air Carriers, US commercial operators, and private operators in that anyone using an FAA license may not operate to Turkey. The only exception applies to US pilots working for a foreign airline.

The ban was issued quickly in response to the Coup attempt, and because of the unstable situation in Turkey. We suspect that it may be removed more quickly than August 15th, but that depends on further developments there.

These are the primary international airports affected by the ban:

LTAC	ESB	Ankara
LTAF	ADA	Adana
LTAI	AYT	Antalya
LTAJ	GZT	Gaziantep

LTAN	KYA	Konya
LTAT	MLX	Malatya
LTAU	ASR	Kayseri
LTAZ	NAV	Nevsehir
LTBA	IST	Istanbul
LTBJ	ADB	Izmir
LTBR	YEI	Yenisehir
LTBS	DLM	Dalaman
LTCG	TZX	Trabzon
LTFE	BJV	Bodrum
LTFH	SZF	Samsun
LTFJ	SAW	Istanbul

The original NOTAM from the FAA, issued on Saturday morning, is copied below.

A0015/16 NOTAMN

Q)KICZ/QRDXX/IV/NB0/W/000/999/5405N12217W999

A)KICZ

B)1607160150 C)1608312359 EST

E)SECURITY..UNITED STATES OF AMERICA ADVISORY FOR TURKEY

THOSE PERSONS DESCRIBED IN PARAGRAPH A BELOW ARE NOT AUTHORIZED TO FLY INTO OR OUT OF ANY AIRPORT LOCATED WITHIN THE ISTANBUL (LTBB) OR ANKARA (LTAA) FLIGHT INFORMATION REGIONS (FIR).

A. THIS NOTAM APPLIES TO: ALL U.S. AIR CARRIERS AND COMMERCIAL OPERATORS ALL PERSONS EXERCISING THE PRIVILEGES OF AN AIRMAN CERTIFICATE ISSUED BY THE FAA, EXCEPT SUCH PERSONS OPERATING U.S.-REGISTERED AIRCRAFT FOR A FOREIGN AIR CARRIER AND ALL OPERATORS OF AIRCRAFT REGISTERED IN THE UNITED STATES, EXCEPT WHERE THE OPERATOR OF SUCH AIRCRAFT IS A FOREIGN AIR CARRIER.

B. NO PERSON OPERATING AN AIRCRAFT, REGARDLESS OF REGISTRY, MAY DEPART TURKEY TO ANY UNITED STATES AIRPORT.

THE JUSTIFICATION FOR THIS ADVISORY WILL BE RE-EVALUATED BY XX 15 AUGUST 20172016.

F)SFC G)UNL

Midweek Briefing 13JUL: South Sudan off limits, New Zealand airport strike off

Cynthia Claros
16 July, 2016

**INTERNATIONAL
BULLETIN**

ISSUED BY FLIGHT SERVICE BUREAU
SITA HNLFSXH AKLFSXH AFTN KMCOXAAL
EMAIL INTL.DESK@FSBUREAU.ORG



South Sudan off limits 13JUL The security situation in Juba, and South Sudan, has deteriorated in the last week, with HSSJ/JUB becoming off limits due to fighting. [Read the article.](#)

New Zealand airport strike off 13JUL A planned strike by Aviation Security across airports in New Zealand, which would have led to wide scale disruption, has been called off at the last minute. [Read the article.](#)

BGBW/Narsarsuaq Current hours are Monday to Saturday 1000-1900Z. If you want to plan a visit outside these hours, or even use BGBW as an alternate, get permission from bgbw@mit.gl in advance. There will be additional costs, especially heavy on a Sunday.

SBZZ/Brazil is the latest country to wield the threat of shooting down aircraft. Last month we reported on the same language from Sudan, in reference to overflight permits. Brazil's firm stance is in relation to the Olympic Games, and says that unidentified aircraft that violate the protected airspace around facilities of the Olympic Games in Rio de Janeiro. "We are not playing," said Defence Minister Raul Jungmann. This is more of concern to a lost C172 than commercial flights (unlike Sudan, which is the reverse), but worth being aware of.

EGPZ/Poland has effectively dispensed with the Schengen agreement for now, expect full border controls at all international airports (ie. Passport check, Gendec).

EGPZ/Scottish FIR The military are carrying out some GPS jamming trials over the ocean from 12-29JUL. If you're operating in the region of Benbecula VOR, especially west of it, be aware that your GPS might

stop working.

OAKX/Kabul Aircraft in the eastern sections of the Kabul FIR can expect some radio issues, as a comm unit (VSAT at Ghanzi) is out of action. The advice from ATC in Afghanistan is to keep trying the assigned frequency until within range of a different transmitter; in the meantime, a bit of SLOP, IFBP and TCAS should keep you out of trouble. See full article.

MKZZ/Jamaica Significant increase in the number of confirmed cases of Dengue fever in Jamaica during the first half of 2016. Dengue fever is endemic to Latin America and the Caribbean and can occur throughout the year.

ENZZ/Norway FIR Plans are afoot to raise the transition altitude to 18,000ft. It's an age old question, why does Europe have different TA's, and the US has just one? Together with surrounding countries, and the Irish FAB, this looks to be changing – but it may take a little while. See Norway AIC 7/16.

YBBB/Brisbane FIR (and Melbourne) will be updating their software on the night of 20JUL, with a hefty 6 hour outage of CPDLC and all the other good stuff.

OAMS/Mazar-E-Sharif Fuel payment is now only accepted in cash.

NZZZ/New Zealand A planned strike by two airport workers' unions and New Zealand's Aviation Security Service (Avsec) will now not go ahead. The unions sought increases in compensation, and negotiations on their demands will take place in the coming weeks. Read the article

EYPH/Paluknys is a new location indicator for the airport in Lithuania.

ZBDS/Edros - Ejn Horo, China will open to foreign flights this month. We did battle with AIP China for 30 mins to get further info but lost the fight. If you know more, tell us and we'll share.

HSZZ/South Sudan The ceasefire announced on 11 July is holding. Juba International Airport (HSSJ/JUB) is open to charter operations; however, commercial flights have yet to resume. U.S. government aircraft evacuated personnel on 12 July; however, a security message issued by the embassy later in the day advised U.S. citizens to continue to shelter in place and not attempt to travel to the airport. Meanwhile, other countries, such as Japan, Uganda, and Germany plan to send military aircraft to evacuate their nationals.

SEZZ/Ecuador A large earthquake (6.4) struck on 10JUL just east of Muisne, on the northwest coast of Ecuador. The quake had a shallow depth and followed 10 minutes after another earthquake that had a magnitude of 5.9. Although strong tremors were reported in Esmeralda and Quito, there were no immediate reports of damage. The Pacific Tsunami Warning Center did not issue a tsunami warning following the quake.

UZZZ/Mt. Klyuchevskoy, Russia continues to produce ash that extends up to 25,000 feet. Movement is towards the east at 10 knots.

PZZZ/Pacific Two hurricanes to monitor: The National Hurricane Center is issuing advisories on Hurricane Celia, located more than 1000 miles west-southwest of the southern tip of the Baja California peninsula, and on Tropical Storm Darby, located several hundred miles west-southwest of Manzanillo, Mexico. Tropical Storm 05E (Darby) is on a strengthening trend...and may reach category 1 hurricane stage over the open ocean in a couple of days. For now both are expected to remain offshore.

DGZZ/Ghana African Union nationals whose countries do not have a visa-free agreement with Ghana are now eligible for a 30-day visa-on-arrival for business and tourism. The visa-on-arrival program will be piloted for three months starting at Kotoka Airport and will be extended to other ports of entry in the future. Travellers can extend their visa upon expiry in Ghana, and business travellers can apply for a

longer-term visa at a Ghanaian consular post.

BIZZ/Iceland ATC Strike continues, primarily affecting BIKF/Keflavik, BIRK/Reykjavik, and BIRD/Reykjavik Oceanic for International Operators. Restrictions on landing, eastbound, and westbound overflying traffic. Read the article

LTBB/Istanbul FIR If you've got some time on your hands, have a look at the Greece-Turkey great NOTAM argument of 2016. This is an almost annual performance, the equivalent of a street argument between two kids.. If you're busy, just skip all of it when they appear on your Pre Flight Briefing for Turkey or Greece (which they will).

View the full International Bulletin 13JUL2016

The annual Greece v Turkey NOTAM battle

Declan Selleck

16 July, 2016



If you've got some time on your hands, have a look at the Greece-Turkey great NOTAM argument of 2016. This is an almost annual performance, the equivalent of a street argument between two kids.

If you're busy, just skip all of it when they appear on your Pre Flight Briefing for Turkey or Greece (which they will). Some of the highlights are below.

Obviously, this is a squabble that would be best for everyone to be kept out of the NOTAM database, but someone started it ...

LTBB/ISTANBUL/SEHIR-CITY A2999/16 11JUL 0414Z

- NAVIGATIONAL WARNING TO ALL CONCERNED:

THIS NOTAM IS ISSUED TO CLARIFY THE A1490/16 LGGG NOTAM ISSUED BY

GREEK CAA.

AS REGARDS THE GREEK NOTAM A1490/16, **TURKEY DOES NOT ACCEPT THE DEFINITION OF THE SEARCH AND RESCUE (SAR) AREA WITH REFERENCE TO ATHENS FIR.** THE AREA REFERRED TO IN THE SAID GREEK NOTAM FALLS WITHIN TURKEY'S MARITIME SEARCH AND RESCUE REGION (SRR) AS DECLARED TO THE IMO AND INCLUDED IN THE IMO'S GLOBAL SAR PLAN. THEREFORE, ALL SAR EFFORTS/ACTIVITIES WITHIN THE TURKISH SRR MUST BE COORDINATED WITH THE RELEVANT TURKISH AUTHORITIES. 11 JUL 04:00 2016 UNTIL 14 JUL 02:30 2016.

LGGG/ATHINAI A1496/16 11JUL 1201Z

-
FURTHERMORE THE SAID ATHINAI/ISTANBUL FIR BOUNDARY WAS DEPICTED ON CHART NUMBER 7 ATTACHED TO THE REGIONAL AIR NAVIGATION AGREEMENT WHICH WAS REACHED IN THE THIRD REGIONAL AIR NAVIGATIONAL CONFERENCE (PARIS 1952) AND SUBSEQUENTLY APPROVED BY THE ICAO COUNCIL ON 23 JUNE 1952.

ACCORDINGLY, GREECE HAS BEEN ASSIGNED RESPONSIBILITY FOR ALL ATM SERVICES AND ICAO PURPOSES AS WELL AS FOR SAR OPERATIONS WITHIN ATHINAI FIR/ HELLAS UIR, AS IS CLEARLY DEPICTED IN THE ICAO AERONAUTICAL CHARTS, AND IS **THE ONLY COMPETENT THEREIN NOT LEAVING SPACE FOR MISLEADING OR MISINTERPRETATIONS.**

CONSEQUENTLY, THE REF (B) TURKISH NOTAM A3009/16 LTAANYX (111139 EUECYIYN JUL 2016) **HAS NO GROUND, CANNOT PRODUCE ANY INTERNATIONALLY LEGAL EFFECT** WITHIN ATHINAI FIR/ HELLAS UIR AND IS CONSIDERED NULL AND VOID.

THE ONLY VALID AND EFFECTIVE NOTAM WITHIN ATHINAI FIR/HELLAS UIR IS THE REF (A) A1495/16 LGGGYNYX ISSUED BY GREECE.

END PART 2 OF 2. 11 JUL 11:55 2016 UNTIL 14 JUL 02:30 2016.

LTBB/ISTANBUL/SEHIR-CITY A3022/16 12JUL 0740Z

- NAVIGATIONAL WARNING TO ALL CONCERNED:

THE VIEWS EXPRESSED IN TURKISH NOTAM A3009/16 REMAIN UNCHANGED AND IS VALID AND EFFECTIVE. THE GREEK NOTAM A1497/16 IS NULL AND VOID.

TURKEY ALSO WOULD LIKE TO EMPHASIZE THAT NO FURTHER EXPLANATION WILL BE GIVEN TO ANY OBJECTION RAISED TO TURKISH NOTAM A3009/16. 12 JUL 07:30 2016 UNTIL 14 JUL 02:30 2016.

LGGG/ATHINAI A1497/16 12JUL 0545Z

-
ACCORDINGLY, GREECE HAS BEEN ASSIGNED RESPONSIBILITY FOR ALL ATM SERVICES AND ICAO PURPOSES AS WELL AS FOR SAR OPERATIONS WITHIN ATHINAI FIR/ HELLAS UIR, AS IS CLEARLY DEPICTED IN THE ICAO AERONAUTICAL CHARTS, AND IS THE ONLY COMPETENT THEREIN NOT LEAVING

SPACE FOR MISLEADING OR MISINTERPRETATIONS.

CONSEQUENTLY, THE REF (B) TURKISH NOTAMS A3012/16 AND A3009/16 LTAAYNYX (111250 AND 111139 EUECYIYN JUL 2016) HAVE NO GROUND, CANNOT PRODUCE ANY INTERNATIONALLY LEGAL EFFECT WITHIN ATHINAI FIR/ HELLAS UIR AND ARE CONSIDERED NULL AND VOID.

THE ONLY VALID AND EFFECTIVE NOTAMS WITHIN ATHINAI FIR/HELLAS UIR ARE THE REF (A) A1495/16 AND A1496/16 LGGGYNYX ISSUED BY GREECE. 12 JUL 05:26 2016 UNTIL 14 JUL 02:30 2016.

South Sudan off limits

Declan Selleck

16 July, 2016



The security situation in Juba, and South Sudan, has deteriorated in the last week, with HSSJ/JUB becoming off limits due to fighting.

The ceasefire announced on 11 July is holding; Juba International Airport (HSSJ/JUB) is open to charter operations; however, commercial flights have yet to resume.

U.S. government aircraft evacuated personnel on 12 July – a security message issued by the embassy later in the day advised U.S. citizens to continue to shelter in place and not attempt to travel to the airport.

Meanwhile, other countries, such as Japan, Uganda, and Germany plan to send military aircraft to evacuate their nationals.

New Zealand strike called off

Declan Selleck

16 July, 2016



A planned strike by Aviation Security across airports in New Zealand, which would have led to wide scale disruption, has been called off at the last minute.

The press release from AvSec follows:

Auckland, 6.00 pm Wednesday 13 July 2016.

New Zealand's Aviation Security Service (Avsec) has reached agreement with two unions which will prevent strike action across New Zealand next week.

Urgent top level mediation was held all day in Auckland today with representatives of the Civil Aviation Authority, Avsec and their Board working out a 'reasonable' deal with PSA and Etu union officials.

Unions will withdraw their strike action effective immediately. Avsec management will withdraw their lock out notice to enable unions to formally ratify the pay offer with their members. This should take 4 - 5 weeks.

Chairman Nigel Gould and Director of Civil Aviation Graeme Harris led the Avsec/CAA negotiation team. "We are pleased we have been able to find some common ground and hope the offer made today, which will be recommended by unions to their members, will lead to a formal settlement and in time a new collective agreement.

The traveling public can be assured we all wanted a constructive outcome and neither Avsec nor unions wanted to reach the point where strike action would cause any disruption to travellers during the school holidays. We have made a lot of progress today." Mr Harris said.

No further details or comment will be made until 11:00 am tomorrow, Thursday 14 July.

Midweek Briefing 06JUL: Hong Kong capacity problems, Iceland: The fun continues

Cynthia Claros
16 July, 2016

INTERNATIONAL BULLETIN

ISSUED BY FLIGHT SERVICE BUREAU

SITA HNLFSXH AKLFSXH AFTN KMCOXAAL
EMAIL INTL.DESK@FSBUREAU.ORG



Hong Kong capacity problems 06JUL During this year, the Hong Kong CAA has issued a couple of warnings to operators to stick carefully to their allocated slots, but it's not making much of a difference to operations there. Read the article.

Iceland: The fun continues 06JUL Last week there were some really positive indications that the ATC strike in Iceland was coming to an end, but it's now worse than ever, with Westbound, Eastbound, and landing traffic all affected. Read the article.

HECC/Cairo FIR A restriction exists for traffic to and from the Amman FIR, so if overflying Jordan and then Egypt, or vice versa, you can only use the waypoint METSA.

OMAE/Emirates FIR has some updated peak times. Departures need a slot between 0630-0730Z and 1700-0000Z. Arrivals will be spaced 5 mins apart during these times also, as will aircraft entering the OMAE FIR from nearby airports like Muscat, Isa, and Baghdad.

EIDW/Dublin Runway 10/28 is closed overnight until 09JUL.

OERK/Riyadh, Saudi Arabia will be hosting the 'Global Ministerial Aviation Summit' 29AUG-31AUG. 55 different ministers from various countries are expected to be in attendance. Be aware of potential restrictions leading up to and after the event.

CYFB/Iqaluit Another NAT alternate favourite, CYFB has some runway closures throughout July.

EGCC/Manchester is doing some work on 05L/23R overnight until 08JUL and has advised operators to carry some extra gas due possibility of holding.

LOWW/Vienna has published a helpful list of rush hour periods – worth avoiding these times as holding is common at VIE. The times are: 0530-0750, 0920-1030, 1140-1240, 1340-1500, 1615-1800, and 1840-1940Z.

BIZZ/Iceland Despite optimistic reports of a resolution to the ATC dispute in Iceland last week, the situation remains unresolved. Last night BIRD Oceanic was closed to most Eastbound traffic once again, as was BIKF. A new addition to restrictions is a closure to many Westbound flights on Wednesday 06JUL – “DUE TO STAFF SHORTAGE IN REYKJAVIK OACC WESTBOUND TFC PLANNING TO ENTER BIRD FROM ENSV VIA GUNPA,VALDI, IPTON, INGAL, ISVIG AND EGPX VIA LIRKI, GONUT, OLKER, MATIK AND RATSU AND THEN PROCEEDING INTO EGGX OR CZQX SHALL REMAIN SOUTH OF BIRD CTA” Read the article.

EDYY/Maastricht ATC have requested crews operating through the Maastricht UIR to log on to CPDLC EDYY, if you have datalink. While voice remains the primary comms method, you might get an uplink message if the frequency is busy – it’s not a test, you should confirm – most of these uplinks are likely to be frequency changes.

EPZZ/Poland has advised operators to check carefully whether permission is required in advance of operations at airports other than EPWW/Warsaw. Many countries including Poland have reinstated Border Controls within the Schengen zone. Best advice is to treat each country as having full Border Controls for the moment (so think Passport, GenDec, etc.)

SPIM/Lima FIR (Note that the airport is now SPJC, distinct from the FIR code) is shutting down airway UG427 after 21JUL.

SUEO/Montevideo ACC (Uruguay) has some comms issues in it’s airspace, and has advised of some extreme spacing between aircraft irrespective of FL – 40nm. For now, this ends today (06JUL) but may happen again.

WSZZ/Singapore Qualifying citizens of Singapore are now eligible to apply for US Global Entry membership – and benefit from expedited entry to the United States at designated airports. Similarly, qualified U.S. citizens are eligible for enrolment in Singapore’s enhanced-Immigration Automated Clearance System (eIACS).

ZMUB/Ulaanbaatar, Mongolia is downgraded to RFF Cat 7 until 10JUL. Also, from 12-16JUL, you can’t file this as an alternate which may limit your options somewhat.

LFPG/Paris due to maintenance on the ILS for Runway 08L/26R from 18JUL to 02OCT. The only approaches that will be available will be RNAV based procedures (LNAV/VNAV, LPV, LNAV) and VOR/DME.

GQNN/Nouakchott, Mauritania has moved to a new international airport this June. Located approximately 10nm north of the city, it has an annual passenger capacity of 2 million. Infrastructure from the capital’s old airport was transported to the new one.

SECU/Cuenca Following the landing incident on 28APR of an E190, all inbound flights will be reportedly be held if the runway is wet – until end of August.

LFMH/St Etienne Fuel outage on 07JUL, 0800-1100 UTC.

Canada/Mexico From 01DEC2016, Mexican nationals will be able to travel to Canada without a visa for business and tourism for up to 90 days.

Turkey/Russia Russia has lifted the travel restrictions on tourists between the two countries. The ban was put in place following the downing of a Russian military aircraft last year.

Bangladesh Germany, Australia and the U.K. have banned direct cargo flights from Bangladesh due to security concerns.

Israel/China The Israeli parliament has ratified a multiple-entry visa agreement with China, under which Chinese business visitors and tourists can enter Israel multiple times with the same ten-year visa and vice versa.

EZZZ/Europe the European Union updated **Air Safety list** (aka the Airline Blacklist) on 17JUN, and lifted a ban on Zambian air carriers.

Uganda Introduction of 'e-visa' system. You must show a valid yellow fever vaccination certificate on arrival.

ZJSA/Sanya FIR, China has an ADS-B trial up and running on L642 and M771. Radar is still the primary separation tool, but ATC ask that you check your Flight ID matches your FPL.

View the full International Bulletin 06JUL2016

Hong Kong capacity problems

Cynthia Claros
16 July, 2016



During this year, the Hong Kong CAA has issued a couple of warnings to operators to stick carefully to their allocated slots, but it's not making much of a difference to operations there. We have this report from a reader, who says:

- The slot allocation is troublesome. If you're lucky, you will obtain a slot within a day or so, but it is unlikely to be for the time that you want.

- Weekends are busier times and slot requests are often denied, making operations difficult.
- The parking allocation in front of the BAC ramp changed as well, making it more limiting – they established a 3m separation rule.
- Outlying positions allow for Pax services, but you still require push back and there are only 2 spots from where you can depart.
- HKBAC is obtaining their own approval now for towing.

If you have any experiences to share, let us know.

Iceland ATC strike bigger than ever

Declan Selleck
16 July, 2016



We had some really positive hints at a resolution of the Iceland ATC strike last week, but it's not over yet – by any measure. Today sees another long list of airspace and airport closures. Oceanic Eastbound, Westbound and landing traffic all affected.

BIKF/KEFLAVIK A0454/16 06JUL 1007Z

(NOTAMR A0453/16) – DUE TO STAFF SHORTAGE BIKF TWR SERVICE LIMITED TO SCHEDULED COMMERCIAL AND INTERNATIONAL FLIGHTS, AMBULANCE AND EMERGENCY FLIGHTS. NO TOUCH AND GOES OR LOW APPROACHES FOR VFR TRAINING FLIGHTS, ONLY DEPARTURE AND ARRIVAL. TWR BIKF SERVICE LIMITED TO AMBULANCE AND EMERGENCY FLIGHTS ONLY DURING THE FOLLOWING HOURS: 09:00-09:30, 11:30-12:00 AND 14:00-14:30. 06 JUL 10:05 2016 UNTIL 06JUL 21:00 2016.

BIRD/REYKJAVIK OACC A0452/16 05JUL 2146Z

(NOTAMR A0451/16) - DUE TO STAFF SHORTAGE IN REYKJAVIK OACC WESTBOUND
TFC PLANNING TO ENTER BIRD FROM ENSV VIA GUNPA,
VALDI, IPTON, INGAL, ISVIG AND EGPX VIA LIRKI, GONUT,
OLKER, MATIK AND RATSU AND THEN PROCEEDING INTO EGGX
OR CZQX SHALL REMAIN SOUTH OF BIRD CTA. 06 JUL 11:00 2016 UNTIL 06 JUL 20:00 2016.

BIRD/REYKJAVIK A0450/16 05JUL 1518Z

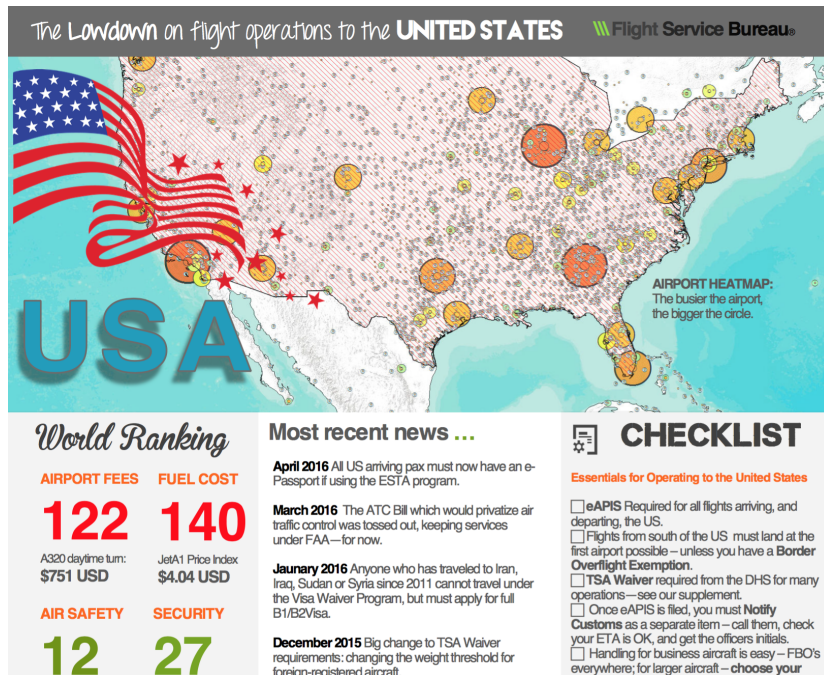
- DUE TO STAFF SHORTAGE IN REYKJAVIK CENTRE,
OPERATORS SHALL FILE TO COMPLY WITH THE FOLLOWING:
1. EASTBOUND TFC WILL NOT BE ACCEPTED FROM CZQX AND
EGGX EXCEPT TRAFFIC WITH DESTINATION IN ICELAND,
SCANDINAVIA, BALTIC STATES AND RUSSIA.
2. EASTBOUND TRAFFIC FROM AERODROMES EAST OF 105W
WITH DESTINATIONS IN THE MIDDLE EAST SHALL REMAIN CLEAR OF
BIRD CTA.
OPERATORS ARE URGED TO KEEP REQUESTS FOR LEVEL AND
SPEED AMENDMENTS WITHIN BIRD CTA TO A MINIMUM.
FOR FURTHER INFORMATION CALL REYKJAVIK SHIFT
MANAGER +354 424 4141. 06 JUL 02:00 2016 UNTIL 06 JUL 08:00 2016.

BIRD/REYKJAVIK A0452/16 05JUL 2146Z

(NOTAMR A0451/16) - DUE TO STAFF SHORTAGE IN REYKJAVIK OACC WESTBOUND
TFC PLANNING TO ENTER BIRD FROM ENSV VIA GUNPA,
VALDI, IPTON, INGAL, ISVIG AND EGPX VIA LIRKI, GONUT,
OLKER, MATIK AND RATSU AND THEN PROCEEDING INTO EGGX
OR CZQX SHALL REMAIN SOUTH OF BIRD CTA. 06 JUL 11:00 2016 UNTIL 06 JUL 20:00 2016.

USA - the Lowdown on Flight Ops

Declan Selleck
16 July, 2016

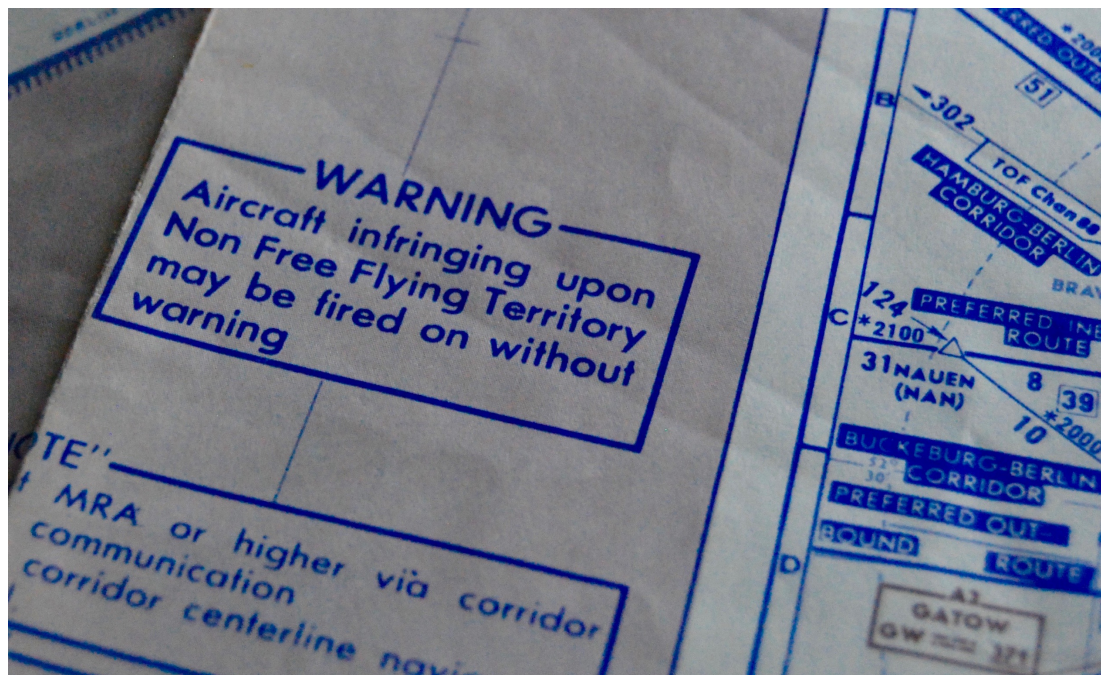


We just published our latest **Lowdown** – this one is for the USA. Heaps of good information on eAPIS, new TSA Waiver rules, Border Overflight Exemption, Customs Notifications, Importation, Special Route Clearances, ESTA, Visas, and Special Flight Authorizations.

You can get these Lowdowns by joining **OPSGROUP** – you can get a single or team membership. If you'd like the US Lowdown, we'll gladly send a copy your way, just email us.

Berlin's Air Corridors - still alive?

Mark Zee
16 July, 2016

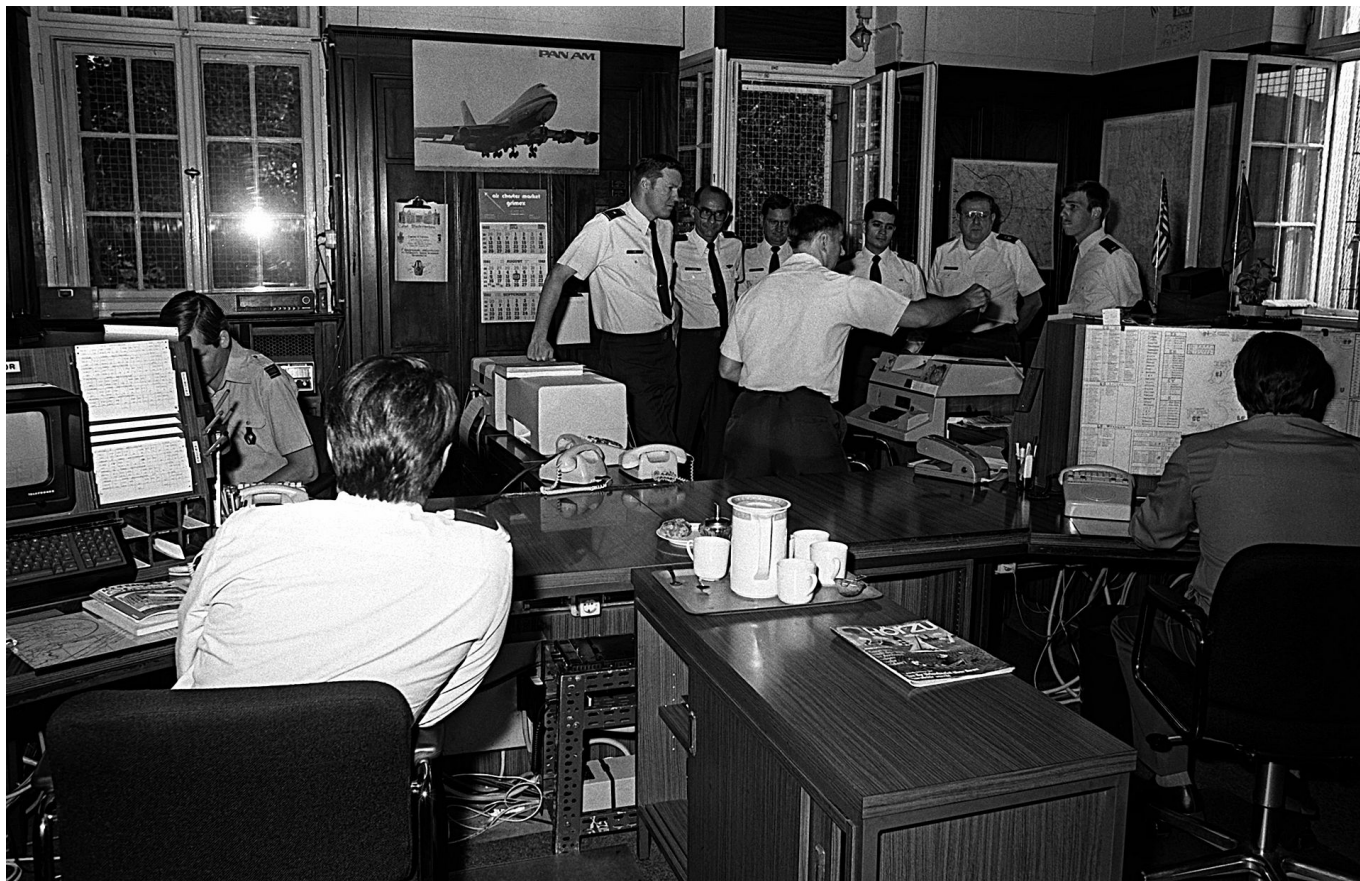


It's a generation ago, and the airway chart landscape is unrecognisable today. For 40 years however, there were only three tiny corridors that allowed a flight into East Germany. In terms of International Procedures, this was one that you really didn't want to get wrong.

Looking back, it's fascinating to see the restrictions that were placed on international operators flying into Germany. The warnings are printed in bold. **Aircraft will be fired upon.** And that threat from the Soviet Union was real – most of us recall the shooting down of Korean 007 in the Sea of Japan in 1983 – and, lesser known, another Korean flight – Korean 902 – over Murmansk in 1978.

Assuming you kept to centreline, the Soviet authorities limited overflight to FL95, and if there was an aircraft in front of you, even a turboprop, you slowed down to follow; no overtaking was allowed.

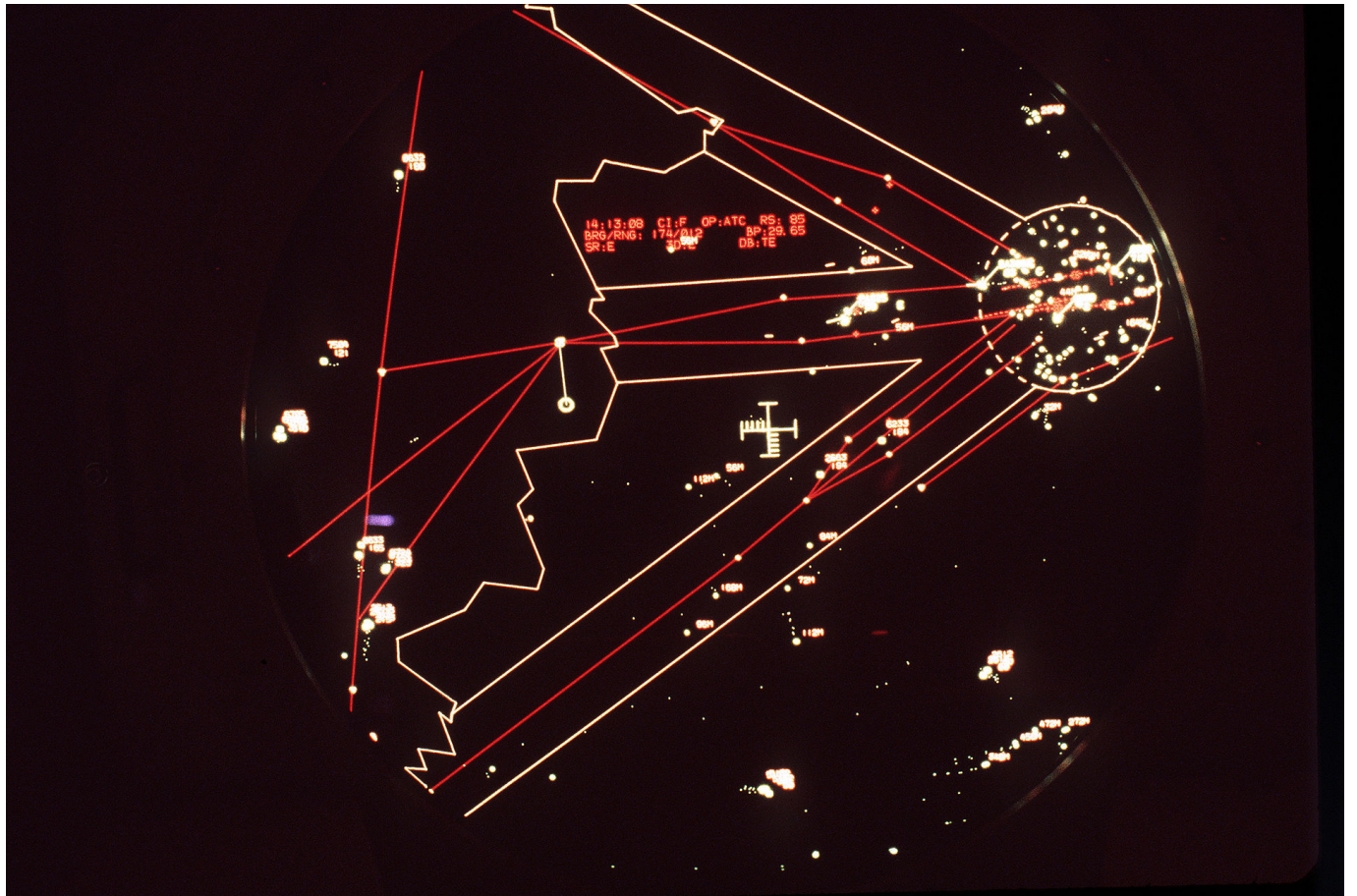
In practice, therefore, the centre corridor was the most used, because it was the shortest and limited the time restricted to FL95. Traffic was controlled by the Berlin Air Route Traffic Control Centre (BARTCC), and monitored by these guys at the Berlin Air Safety Centre – who issued the overflight permits required.



A request for an overflight permit for East Germany resulted in one of three outcomes:

- Permission Granted, **Safety of Flight Guaranteed**
- Permission Granted, **Safety of Flight Not Guaranteed**
- **Permission Denied**

Radar coverage from the Berlin ATC Centre is shown below. In 1952, an Air France flight from Frankfurt to Berlin, operated by a DC-4 came under sustained attack from two Soviet MiG 15 fighters while passing through one of the corridors. The attack damaged the aircraft severely, and the PIC made an emergency landing at Tempelhof with two engines shut down. The Soviet military authorities claimed the Air France plane was outside the air corridor at the time of attack.



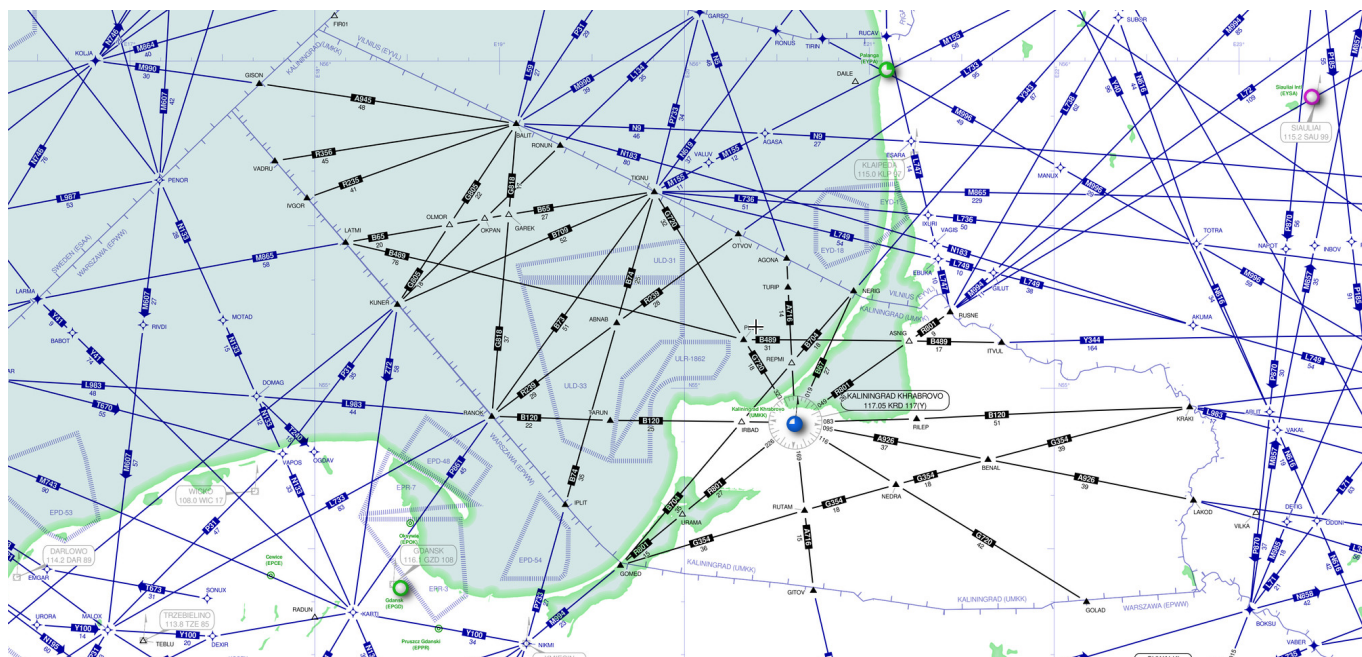
This chart from our own archives shows the Airways structure in 1970.



And so to today. Long forgotten restrictions of the past, right? Well, not really. We only have to look a little further north-east, about 500km - and we find the **Kaliningrad FIR** - in some respects an ongoing relic from the Cold War.



It sits neatly into the Eurocontrol Upper Airspace Map, but in practice, it doesn't fit into the European ATC picture quite so comfortably. If you squint closely at the skyvector chart for the area, you'll see that the airways in the Kaliningrad FIR are black – and everywhere else is blue.



This is because, first of all, **prior permission is required from Russia** to overfly the FIR, as Kaliningrad – until 1945 part of Germany – is an “Oblast” of the Russian Federation. This permission must be obtained from Moscow at least 72 hours prior to flight using Form N, and on approval, is valid for 48 hours.

Looking more closely, you'll see that there aren't a lot of useful routes – and they don't line up with the rest of the system. Few airlines, and even fewer private flights, operate through this airspace. Your most likely route north-south will take you to BOKSU – squeezed in between Kaliningrad and Belarus – not as restrictive, but still requiring prior permission.

Similarities between Kaliningrad and Berlin end there, but there are enough to be of interest to the international operator.

Midweek Briefing 29JUN: Santa Maria Oceanic Strike, US Entry Requirements

Cynthia Claros
16 July, 2016

INTERNATIONAL BULLETIN

ISSUED BY FLIGHT SERVICE BUREAU

SITA HNLFSXH AKLFSXH AFTN KMCOXAAL
EMAIL INTL.DESK@FSBUREAU.ORG



Santa Maria Strike: Four Routes 29JUN Santa Maria Oceanic has published four special routes for use during the upcoming **"July Friday Strike Series"** ATC Industrial Action. Read the article and then Summer of Strikes.

New US Entry Requirements 29JUN The US has updated entry processing through ESTA (the online visa system for countries using the Visa Waiver Program). Read the article.

LTBA/Istanbul has reopened to traffic after a terrorist attack on 28JUN. 40 people were killed in a series of explosions and gunfire at the International terminal on Tuesday evening.

UMZZ/Belarus will undergo a re-evaluation of its currency and banks will be closed to the public between 30JUN and 01JUL, if operating to Minsk you should ensure you have sufficient cash available for those days.

EGZZ/UK Much has been written about Britain's departure from Europe this week (and we're talking Brexit, not football), but if you're having trouble figuring out how this will affect you as an operator, that might be because it won't. Read the article.

LGZZ/Greek Islands Now that summer is here in Europe, the annual capacity challenge at Greek Islands is most acute on weekends, expect healthy slot delays if operating to LGIR (Iraklion) LGKP (Karthos) LGMK (Mikonos) LGZA (Zakinthos) LGSR (Santorini) LGSK (Skiathos) or LGSA (Chania).

VHHH/Hong Kong The CAD issued a reminder to operators this week that the airport is under strain, and slots issued must be strictly adhered to. It would seem that the Slot Adherence procedure issued earlier in the year isn't really working. Any local operators have feedback? Let us know.

EFRO/Rovaniemi has no Jet A1 available from until July.

LPPS/Porto Santo is also out of Jet A1 until 01JUL.

DAAA/Algeria New fax/phone number for the ACC (Area Control) in Algiers: **+213 (0)21 67 49 27** until 23JUL.

AYZZ/Papua New Guinea Reports of civil unrest, student demonstrations across Papua New Guinea started in May 2016 and are ongoing. There have been violent clashes between students, other groups and the police in Port Moresby, Lae and the Highlands.

PWAK/Wake Island has advised its High Loader is out of action until later in the year, so for large aircraft like B767 upwards, no offload capability exists for cargo.

EGZZ/Scotland (Will we need a new ICAO code soon?) Glasgow ATC – at both EGPK and EGPF – has sporadic closures overnight at present due to staffing issues. Keep an eye on Notams.

WAAF/Ujung Pandang has some radar outages affecting high-level overflights, optimum levels may not be available.

LPPO/Santa Maria Oceanic has published four special routes for use during the upcoming “July Friday Strike Series” ATC Industrial Action. The Strike Time Period is : 0700-0900Z, during which time only these four routes will be accepted. -ROUTE A- 45N020W 40N030W 37N040W -ROUTE B- DETOX 39N020W 36N030W 34N040W -ROUTE C- LUTAK 36N020W 33N030W 29N040W -ROUTE D- ULTEM 27N040W

LIZZ/Italy We have been notified of possible ATC industrial action on 23JUL which was previously scheduled on 05JUL. Details and participation of relevant ACCs are as follows: National strike (ACCs and airports) 0800-1600 UTC. Local strike at LIRA – Ciampino 0800-1600 UTC.

VCBI/Colombo, Sri Lanka There was industrial action yesterday, 28JUN, by Immigration Officials, which may continue. Flight delays possible.

LEZZ/Spain There was a strike threatened by Apron Controllers at LEMD/Madrid but that was cancelled on Monday.

LPZZ/Portugal The seven unions of NAV Portugal sent a pre-notice for an industrial action for ATC and non-ATC personnel, during two hours daily on: 30JUN and 8/15/22/29JUL.

KATL/Atlanta Upgrades on the airport have officially started, which will include a new runway, concourse and hotel.

View the full International Bulletin 29JUN2016

Midweek Briefing 22JUN: Iceland ATC strike - end in sight, Israel FPL changes

Cynthia Claros
16 July, 2016

INTERNATIONAL BULLETIN

ISSUED BY FLIGHT SERVICE BUREAU

SITA HNLFSXH AKLFSXH AFTN KMCOXAAL

EMAIL INTL.DESK@FSBUREAU.ORG



Iceland ATC strike - end in sight 22JUN Operators on both sides of the Atlantic have been frustrated over the last 6 weeks with continual sporadic ATC Industrial action. And end may be in sight, but in the meantime keep a close eye on BIRK, BIKF and BIRD Notams. Read the article.

FPL changes: Israel 22JUN Current Flight Planning procedures for flights across Europe from Israel will change in light of a new agreement signed between Israel and Eurocontrol. Read the article.

LFZZ/France ATC Strike Number 9 gets underway today until 24JUN at 0400Z, usual disruption and restrictions apply. Avoid France where possible. NOTAM F1171/16 refers.

EGGX/Shanwick is having an 80's party on the 28th of June at 1600Z. For engineering work, all the new technology is being taken offline for three hours, so no CPDLC, ADS-C or OCL. Instead we have Voice Reports, HF, Manual Clearance Requests (123.95 or 127.65), and so on; just like the good old days. When you hit 30W log on to Gander manually.

UMZZ/Belarus The Minsk FIR has updated its table of cruising levels and altitudes below Transition; view the AIC.

Gambia The UK FCO issued updated travel advice for The Gambia : "Demonstrations took place in April and May 2016 in Banjul. Demonstrations could occur at any time in any part of the country prior to presidential elections planned for 01DEC. You should be vigilant, avoid all demonstrations"

LPZZ/Portugal is joining the International ATC Strike Club and will begin with industrial action, for two hours daily on: June 30th, and July 8th,15th, 22nd and 29th.

KCXO/Houston Regional will be opening a new customs facility mid July. KCXO serves the Metro-Houston area and is 46 miles outside of town. The new CBP facility adds more choice to international operators over the already saturated Houston area airports.

KZZZ/United States The U.S. Navy has scrubbed the planned military GPS interference testing across the U.S. Southwest that was supposed to happen this month.

LWSS/Skopje is implementing Free Route Airspace in the Skopje ACC above FL245, effective 23JUN. FRA is available H24 with DCT limit unlimited. The ATS network above FL245 is withdrawn. Additional info is

available in the Republic of Macedonia AIP AMD 58/16. New RAD measures can be found in the increment file and will become part of Annex 4 on AIRAC 1608.

LWZZ/Macedonia Late on 20JUN, tens of thousands of anti-government protesters gathered in central Skopje, Macedonia's capital, to conduct another demonstration. The protesters gathered outside the Special Prosecution building before then marching to the Ministry of Justice building, where they broke some of its windows and threw red paint at its exterior.

EZZZ/Scandinavia Another Free Route Airspace update is happening in the two Functional Airspace Blocks NEFAB and DK/SE FAB. NEFRA Phase 1 will be implemented as of AIRAC 1607 on 23JUN, to implement H24 cross border Free Route Airspace between DK-SE FAB and NEFAB, except Norway, above FL285. ATS routes will be kept. Norway plans to implement cross-border Free Route Airspace spring 2017.

CYZZ/Canada has introduced "No Drone Zones" around airports that includes fines for offenders caught operating drones in the restricted areas. They are also drafting new legislation to strengthen rules regarding drone operations.

LEMD/Madrid may have industrial action on 28JUN, the Apron controllers are making noises about a strike. Not confirmed.

WAZZ/Indonesia FIR Ujung Pandang FIR has a couple of radar outages from 19-27JUN. Reroutes or delays are not likely, but strong potential for lower than optimum Flight Levels.

HECC/Cairo FIR If for some reason you are operating flights to or from Libya, then **A:** You're probably not reading this bulletin carefully enough, and **B:** Be aware that you are required to obtain PPR from Egypt via AFTN to HECAYNYX, at least 48 hours before the flight, in order to overfly Cairo FIR.

EGAA/Belfast ILS 25 out of service along with other ongoing runway and taxiway closures until 11AUG16. Please check EGAA NOTAM's for specific closures.

EGLF/Farnborough Temporary restricted airspace will be in effect for the annual Farnborough Airshow 16-17JUL. AIC M 033/2016.

France The French authorities have extended the document checks at their borders, these measures will apply to all airports in France and also to Basel airport. Especially during the period of the European Football Championships, passengers travelling to/ from French airports are asked to ensure they have a valid identity document (passport or identity card) with them whilst travelling. A drivers license is not an acceptable document.

VTBB/Bangkok FIR Monsoon season runs July-September. Big potential for holding and airport closures in the region, taking extra fuel is recommended.

OEZZ/Saudi Arabia FIR is introducing new Navigation Charges on 01JUL. All the maths is here.

LSZA/Lugano will close 10-19OCT due to heavy maintenance work on the main runway. No traffic will be able to operate. The airport operator has said 20OCT should be the reopening day but risk that this may be extended.

WMZZ/Malaysia Following a directive by the Malaysian Immigration Department, all foreign nationals travelling on all domestic flights will be required to produce passports upon passing through Immigration control, effective immediately.

Azerbaijan An online e-visa issuing system, called ASAN Visa, will be established that should streamline the visa application process. Eligible foreign nationals will be able to obtain supporting documents, submit their visa applications and receive an e-visa within three days of submission through the portal. The list of eligible nationals is expected to be available soon on the Foreign Ministry website.

EGPK/Prestwick has ongoing overnight closures due to ATC staffing problems, keep an eye on NOTAMs.

EIDW/Dublin will closed for 15 minutes at 1500Z on 23JUN due to a VIP departure.

NWWW/New Caledonia The South Pacific is not exempt from ATC strikes either; overnight closure of the NWWW airspace means no enroute traffic accepted in the FIR tonight – and sporadically ongoing. Note that the Fire Service also has reduced RFF category at specific times. Check Notams.

SKED/Bogota FIR NOTAM of the month award: Colombia Notam A1947 issued on 17JUN. Be aware of the potential for your Cabin Crew to request a change to the SID from ATC, unbeknownst to you. In full: “CHANGES TO STANDAR (sic) INSTRUMENT DEPARTURE (SID) COULD BE DONE BY RADIOTELEPHONY BETWEEN CABIN CREW AND THE CORRESPONDING ATS DEPARTMENT WHILE COMMUNICATION INTERCHANGE, IN ACCORDANCE WITH AERODROME OPERATIONS REF. AIP ENR 1.10”.

We actually have no idea what they mean. Let us know, and keep an eye out for those sneaky flight attendants.

LEPA/Palma has a bunch of outages, and runway and taxiway closures at present that will create restrictions and delays. Take a close look at your arrival and dep times before operating.

Suriname Immunisation checks for Yellow Fever are being carried out throughout June at all border check points, ports and international airports in Suriname; make sure you have a valid yellow fever certificate if required.

RJZZ/Japan On 22JUN heavy rains caused building damage and fatalities in southwestern Japan. At least six people died, as a result of the rain and mudslides across the island of Kyushu. Emergency personnel evacuated several hundred people due to the threat of further mudslides.

Uzbekistan has increased security due to a major summit, from 23-34JUN which may result in changes to flight departures and lengthy check in and security clearance at airports across the county.

View the full International Bulletin 22JUN2016

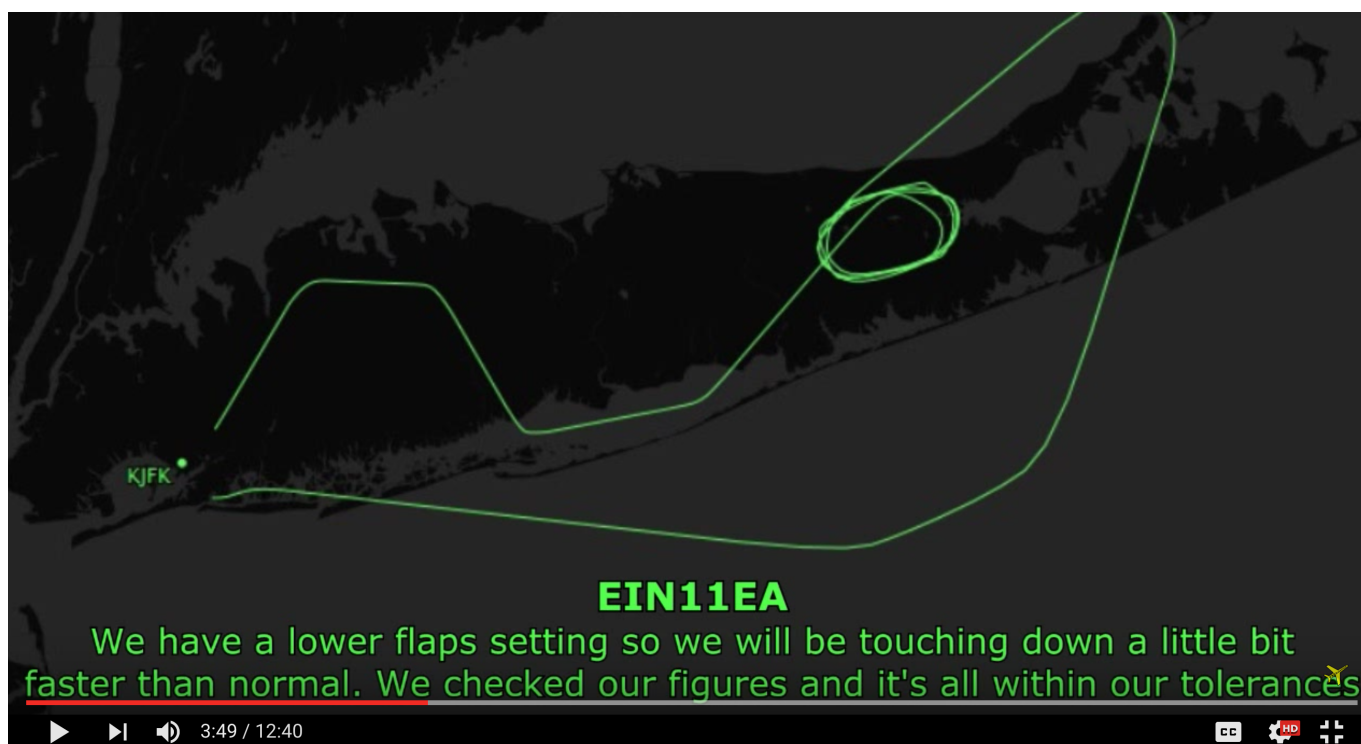
A lesson in emergency handling, from Aer Lingus

Mark Zee
16 July, 2016



In September last year, an Aer Lingus Boeing 757 (operated by Air Contractors), suffered a loss of the **Left Hydraulic system** on departure from JFK. The left hydraulic system is the main one, meaning that Flaps, normal gear extension, and Nosewheel steering all become unavailable. The failure is therefore serious, albeit one that would be a favourite for simulator practice.

There are some really interesting lessons to learn from this incident, not least of which is how we now get access to the information that emanates from it. No longer do we need the official report; it's all out there on **Live ATC and YouTube**. It's **12 minutes 40' of highly worthwhile viewing**, whatever your thoughts on how public this all is.



And so to the incident. **Foremost, this is a lesson in professionalism and communication**, from an outstanding crew. Listen carefully, and observe how:

- A clear report is made as to the situation and what's needed immediately.
- Potential for a spillage of fluid on the runway – not their problem, right now – but passed on as the first consideration for others.
- Early message to JFK, via Boston Centre, that ILS22L is the best runway for them, that they cannot vacate, and that the gear doors may look unusual.
- Communication is clear, precise, and authoritative – making sure everyone has all the information they need.
- Taking full command of the situation on the ground, during the fire incident. **“Say again, and make sure nobody speaks apart from you”**. Communications involving rescue vehicles on ATC frequencies are notoriously confusing and unclear, this crew handled the confusion with authority.

Some **International Differences** that can be seen here:

- Pounds and Kilos – this 757's indications are in Kilos; ATC don't know the conversion either, and another US aircraft on the frequency steps in to help out. Since the Gimli Glider, this has always been an issue.
- Mayday and Emergency – read more below, but the US likes the phrase “Declaring an emergency”



Some other interesting factors:

- **A really awful callsign.** Bad enough for a normal crossing and 6 hour flight; brutal in an emergency. The flight was EI110 – so the callsign should be **Shamrock-one-one-zero** (one-ten works fine). Problem: lots of other airlines have this number too, so to avoid callsign confusion, someone in an office somewhere decided to change it to Shamrock-One-One-Echo-

Alpha.

- Callsign confusion is in fact the result. Try saying it a few times in a row. The controller variously calls them “Shamrock 11E”, “Speedbird 11EA”, “Shamrock 11A”. The callsign alone made things difficult for ATC and the crew.
- ATC did a pretty good job of keep comms to a minimum. In most incidents, **ATC create stress and workload for the crew** by asking non-essential questions the moment that an emergency is declared – which is the same time as the crew have a bunch of checklist work to do. When you get a Mayday or Emergency call on your frequency, hang tough with the questions for a minute or two, unless you need answers for immediate traffic separation.
- ATC will always ask **Souls on Board** and **Fuel on Board**. Why? To know how many people to account for on the rescue, and how much Jet fuel is going to fuel a fire if there is one after landing. Get the souls on board accurate (not a bad idea to have this written at the top of the flight plan), but a rough estimate of fuel will do. If you’re using a decimal, you’re doing it wrong.

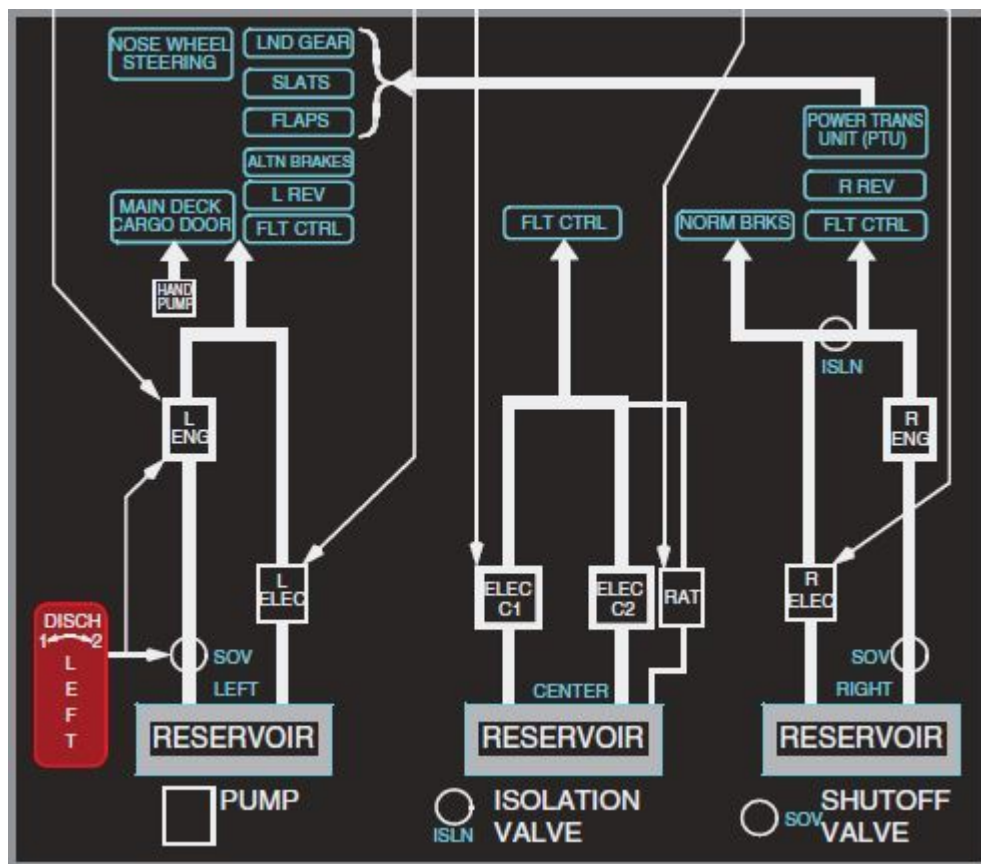
Emergency/Mayday/Pan:

- In the US, normal practice is that you either **declare an emergency**, or you don’t – unlike many other countries where a choice between Mayday (serious) and Pan-Pan (cautionary) exists.
- **US ATC Handbook:** “If the words “Mayday” or “Pan-Pan” are not used and you are in doubt that a situation constitutes an emergency or potential emergency, handle it as though it were an emergency. “
- **Sidenote:** Many think that only the flight crew can declare an emergency. In fact, Flight Crew, Dispatch, Company Representatives, and ATC can all declare an emergency. An emergency can be declared without notifying the flight crew.
- In this case, the crew were comfortable in their communication with ATC – and able to “not declare” but at the same time request emergency equipment on standby. As it turned out, this emergency equipment was critical because there was a small fire after landing. If you are uncertain whether ATC understands the nature of your situation – **declare an emergency**. You can always cancel it later on.
- **Fuel Reserves Approaching Minimum:** Internationally, ‘Fuel Emergency’ or ‘fuel priority’ are not recognised terms. Flight crews short of fuel must declare a PAN or MAYDAY to be sure of being given the appropriate priority.
- In 2005, ATPAC recommended changing FAAO 7110.65 (the regs for controllers) to include “emergency” as a term that could be used in lieu of “mayday” and “pan-pan.” They then withdrew the recommendation because they decided that creating more differences from ICAO standards was a bad thing.

It’s easy to forget that in a real emergency, no matter how strong your training, you have to deal with stress and adrenaline that doesn’t appear in the simulator.

A hydraulic loss is considered ‘routine’ in the books, but many accidents in the past have come from compounding errors – those holes in the swiss cheese line up pretty easily once the first one is as big as a hydraulic leak.

The cool, clear, and decisive communications from this crew indicate that they have the Big Picture firmly under control. It's a lesson for all of us.



Midweek Briefing 08JUN: Unsafe Airspace, New China ADIZ

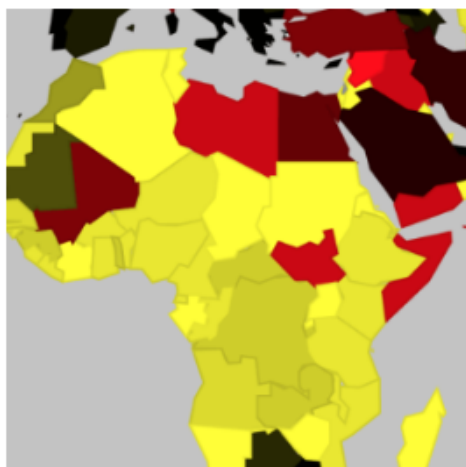
Cynthia Claros
16 July, 2016

INTERNATIONAL BULLETIN

ISSUED BY FLIGHT SERVICE BUREAU

SITA HNLFSXH AKLFSXH AFTN KMCOXAAL

EMAIL INTL.DESK@FSBUREAU.ORG



Unsafe Airspace - new summary issued 08JUN Today Flight Service Bureau published International Ops Notice 02/16 - "Unsafe Airspace".

New China ADIZ - South China Sea 08JUN There have been several media reports this week that China is preparing to set up a new ADIZ in the South China Sea. Read the article.

KCLT/Charlotte New SIDS and STARS for aircraft arriving and departing to the Northeast have been added to CLT as of May 31. Also, construction of a new ATC tower has also broken ground, the new tower will be equipped with NextGen systems that include STARS (Standard Terminal Automation Replacement System), ADS-B (Automatic Dependant Surveillance - Broadcast) and AEFS (Advanced Electronic Flight Strip System).

CZZZ/Western Canada has been experiencing fuel shortages due to recent wildfires in the oil patch. Please check with local handlers for any fuel constraints.

KZMA/Miami FIR NASA is planning on launching a Delta IV rocket on 09JUN. Please check KZMA FIR NOTAMS for restrictions.

KZZZ/USA Tropical Storm Colin has passed Florida, Georgia, South Carolina and North Carolina before moving out over the Atlantic.

CYQY/Sydney, Nova Scotia has added 2 fire trucks and increased staffing levels to provide ARFF CAT 6 or 7, time of day pending. CYQY has issued NOTAM 1A3425/16 covering those hours.

LLZZ/Israel has signed an agreement with Eurocontrol and will allow the country and it's users to benefit from the services that Eurocontrol provides. This is excellent news for filing out of LLBG and transiting to or over Europe as this will help streamline the process significantly and coordination will only have to be with Eurocontrol for any changes.

RCTP/Taipei has resumed operations on June 3 after operations were suspended due to flash flooding. The airport has also lost power numerous times due to the unstable power supply following days of severe flooding. While the power cuts rendered the terminal's air conditioning system inoperable, the airport experienced only minor delays.

VNKT/Kathmandu has been experiencing problems with the VHF ATC equipment. Aircraft on approach and Area Control freqs may experience increased squelch and at times leaving ATC without comms.

HSZZ/Sudan has warned it will shoot down any aircraft that infiltrates it's airspace that has not obtained the proper permission and/or following proper procedures. If you need to transit this airspace please make sure you have all the required documentation.

FHSH/St Helena has reportedly delayed the airport opening indefinitely, due to safety concerns – severe turbulence and windshear were commonplace during testing trials by a B737-800.

China Beijing – The Mainland Affairs Council (MAC), which supervises relations across the Taiwan Strait, on Friday issued a yellow travel alert for Beijing after the first H7N9 flu infection case for this year was confirmed in the Chinese capital.

Malaysia Malaysian officials fired several officials on charges connected to a security breach at Kuala Lumpur International Airport (WMKK/KUL). Security officials stated that airport security officials collaborated with human trafficking syndicates to bypass the airport's passport verification system. The investigation discovered that, since 2010, airport officials purposely disrupted the immigration system at certain times of the day on several occasions. Malaysian officials will publish a report with the full findings.

Angola The World Health Organization (WHO) reported on 27 May 2016 that 301 people have died in Angola's yellow fever outbreak, which began in December 2015. The number of suspected cases is now 2,536. The outbreak began in Luanda and has since spread to areas throughout the country, particularly along the coast and in the central regions, despite a large-scale vaccination program. Cases linked to the Angolan outbreak have also been reported in the Democratic Republic of Congo (DRC), Kenya and China.

Jamaica is now charging a \$35 US departure tax for all air passengers.

Uzbekistan British FCO cautions when travelling with medicines; you can be detained on arrival if you're in possession of certain medicines, including codeine; you should always carry a doctor's prescription with you.

France – the Air France pilots' union announced a work stoppage for 11-14 June, coinciding with the first week of the Euro 2016 soccer championship. The strike has been planned in protest over pay disputes, and the union has stated that it may observe further strikes. Further details are likely to emerge, as the situation is developing.

Yemen On 28MAY, approximately 20 gunmen stormed Aden International Airport (OYAA/ADE). A 90-minute gunfight followed the attack, during which one civilian was killed by a stray bullet. Authorities regained control of the situation and detained the gunmen's suspected leader.

Nepal A nationwide general strike is planned on Thursday 09JUN2016 across the country. Protest can occur at short notice anywhere. Stay cautious and stay away from these areas.

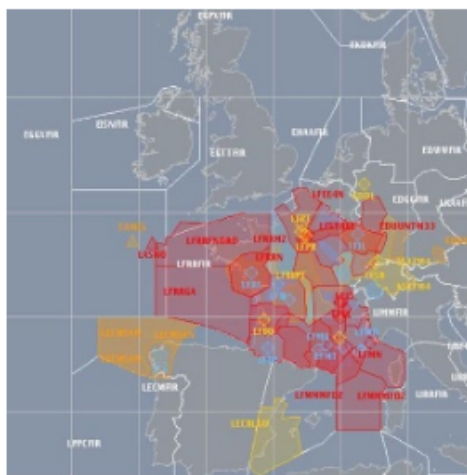
View the full International Bulletin 08JUN2016

Midweek Briefing 01JUN: EASA Updates

'Suspect Aircraft' Guidelines, 8th French ATC Strike

Cynthia Claros
16 July, 2016

INTERNATIONAL BULLETIN	ISSUED BY FLIGHT SERVICE BUREAU
	SITA HNLFSXH AKLFSXH AFTN KMCOXAAL EMAIL INTL.DESK@FSBUREAU.ORG



EASA Updates 'Suspect Aircraft' Guidelines 01JUN EASA has published new guidelines for inspectors to assess which aircraft should be prioritised for SAFA ramp checks in Europe and SAFA compliant states. Read the article.

8th French ATC strike this weekend 01JUN Notification has been given by French ATC Unions of a Three Day Strike this coming weekend from Friday-Monday, starting at 0400Z Friday 03JUN. Read the article.

ZZZZ/China The new 144 hour visa-free rule is extended to Nanjing Lukou Airport of Jiangsu, Hangzhou Xiaoshan Airport of Zhejiang, and all air, sea and railway ports of Shanghai, including Pudong Airport, Hongqiao Airport, Shanghai Port International Cruise Terminal, Wusong Passenger Transport Center and all railway stations in Shanghai.

CYMM/Fort McMurray is scheduled to reopen 10JUN to regular commercial operations. The airport has been closed to normal traffic due to a significant forest fire.

MMAA/Acapulco after an outage lasting several years the ILS for RWY 10/28 is operational again.

KSEA/Seattle has runway 16C/34C closed until 27JUN for repairs. ATC initiatives possible through the construction.

EINN/Shannon and **EICK/Cork** will be testing a new "Remote Tower" system from 06JUN until September, where at quieter times the controller in Dublin will provide the ATC service to flights at Shannon and Cork. The IAA says airspace users will not notice the change. We think you might.

LFL/Lyon will be re-numbering their runway to 17/35 from 18/36 in September.

VOTP/Tirupati will begin International operations beginning the end of June with flights to the U.S. The airport had recently upgraded their customs systems and other procedures.

LZZZ/Mediterranean Despite some reports, NATO operations in Libya appear unlikely. There are several new airspace NOTAMs, but is anyone still flying to Libya?

LFZZ/France due to ongoing protests at french oil refineries and fuel shortages the French CAA has advised to tanker in as much fuel as possible to help mitigate any issues. Please check with local handlers for any specific fuel constraints.

SPZZ/Ecuador Volcano Sangay is producing ash that extends up to 20,000 feet. Movement is towards the west at 10 knots. Please check with the Washington VAAC for the latest advisories.

LLBG/Tel Aviv, Israel On 26-27MAY strike action in the form of a work go-slow took place. The slowdown has primarily affected outgoing flights by increasing the time between takeoffs, but it has been reported that if the slowdown continues it will begin to affect incoming flights.

NVZZ/Vanuatu 27MAY a 5.0 magnitude earthquake struck west of Vanuatu. The quake was centered approximately 60 mi/95 km northwest of Port Vila and was measured at a depth of about 6 mi/10 km. No tsunami warning has been issued.

DAZZ/Algeria At 0054 local time (2354 UTC) on 28MAY, a magnitude 5.2 earthquake struck approximately 35 mi/55 km southeast of Algiers, the capital of Algeria. The epicenter of the earthquake registered a depth of approximately 7 mi/ 12 km. Following the quake, there were no reports of injuries or damage.

FNZZ/Angola A yellow fever outbreak has caused 301 deaths so far this year. The number of suspected cases is 2,536. The outbreak began in Luanda and has since spread to areas throughout the country, particularly along the coast and in the central regions, despite a large-scale vaccination program.

VDPP/Cambodia Political tensions are high in Cambodia following contested national elections in 2013. Arrest warrants have been issued for the leaders of the opposition CNRP party and the situation is unpredictable. On 30 May police blocked roads in southern Phnom Penh to prevent opposition CNRP supporters from carrying out a planned protest march. Further disruption is possible if the remaining leader is arrested. The opposition party has announced it will hold mass, non-violent, demonstrations and a number of unions have said they will strike in support.

LFZZ/France Despite recent strikes, the French government has stated it will not back down from labor reforms despite street protests and refinery blockades. The CGT Union has threatened to disrupt the upcoming Euro 2016 soccer tournament if the government does not back down; however, after meeting with representatives of the oil industry, government officials stated that the situation at fuel depots is improving.

Ramadan starts on 06JUN, for one month. If you are operating to any Islamic countries, expect the usual slowdown in work, longer processing times for permits, and closures.

OEZZ/Saudi FIR Saudi Arabia has intercepted a ballistic missile that was fired from Yemen, after which Saudi aircraft bombarded the missile's platform. A Saudi official stated that the country may reconsider the kingdom's truce with Yemen, as a result of the strike. The missile launch was the second strike in May.

RCZZ/Taiwan On 31MAY, a 6.1 magnitude earthquake struck approximately 70 mi/115 km northeast of Taipei. The quake was measured at a depth of about 150 mi/240 km. There were no reports of damage, and no tsunami warning was issued.

UKZZ/Ukraine On 29MAY, attacks by pro-Russian rebels in eastern Ukraine, violating the ceasefire signed

in February 2015, killed five Ukrainian military officers and wounded four others. The latest attacks follow a 24 May report released by Ukrainian authorities, stating seven soldiers were killed on that day, making it the deadliest day for Ukrainian forces since August last year.

KZZZ/USA The State Dept has issued a warning to arriving travellers this summer to make sure that they have all necessary documents to enter the United States – there have been multiple changes to the rules this year (see Active Bulletins below for more on this).

View the full International Bulletin 01JUN2016

Midweek Briefing 25MAY: Cairo airspace - GPS jamming, Australia: new RNP rules (again)

Cynthia Claros
16 July, 2016

INTERNATIONAL BULLETIN	ISSUED BY FLIGHT SERVICE BUREAU
	SITA HNLFSXH AKLFSXH AFTN KMCOXAAL EMAIL INTL.DESK@FSBUREAU.ORG



Cairo airspace - GPS jamming 25MAY Egypt notified operators yesterday that GPS jamming is a concern to HECA/Cairo arrivals and overflights, and warned against conducting RNP/RNAV arrivals or approaches. Read the article.

Australia: new RNP rules (again) 25MAY A last minute relaxation by CASA has exempted Foreign private operators from having to be RNP2 compliant, ahead of many Nav aids being switched off on Thursday. Foreign Commercial operators have a two year window to comply. Read the article.

LFZZ/France A French national strike is being called for on 26MAY by the DNSA. French Strike Regulation plan will be applied from 26/0400 UTC to 27/0400 UTC. Monitor NOP.

NTAA/Tahiti may not have fuel available from 25-28MAY due to strike action.

KZMA/Miami FIR A Falcon 9 rocket is set for launch from Cape Canaveral on 26MAY, a 2-hour launch window opens at 2140Z. 27MAY is the back-up day for the launch. Check KZMA/KZJX FIR NOTAM's for restrictions.

VECF/Kolkata has updated SATCOM and local phone numbers: Kolkata Oceanic is at 441921 or 00870762092876 and Area Control is at 441902 or 00913325119520. The Satcom numbers are routed through the public telephone system.

EBLG/Liege Not available from 1530-2000 due to Staffing issues (which may recur later in the week).

MZZZ/Mexico A new law in Mexico expands the business, tourist and transit visa exemption for up to 180 days to visa nationals with a Canadian, Japanese, Schengen or UK visa, effective immediately, and to visa nationals who are permanent residents of Chile, Colombia or Peru effective July 1. APEC Business Travel Card (ABTC) holders, certain airplane crew members remain eligible for this exemption.

MROC/San Jose On 21MAY Mount Turrialba erupted. The volcano is located approximately 30NM west of MROC. Some flights were cancelled in response to the eruption. Please monitor the **Washington VAAC** for further advisories.

EZZZ/Europe Eurocontrol has confirmed the date of 01JAN18 for all aircraft to be 8.33 kHz compliant. Currently 8.33 kHz is required only above FL195 but as of 01JAN18 it will be required below FL195 to the surface. Europe has an ongoing shortage of voice communication frequencies.

KZZZ/USA The U.S. Department of Transport has banned e-cigarettes from checked airline baggage over fire risks. This includes both passengers and flight crew.

USHH/Khanty-Mansiysk is closed until 30MAY at 1500Z due to the runway being repaired.

FACA/Cape Town FIR CPDLC/ADS-C is not available until 31MAY.

LLLL/Tel Aviv FIR has updated their security procedures for entering the the LLLL FIR. Please see **AIC 2/16**.

VGEG/Chittagong Flight operations at Chittagong airport have resumed after suspension due to cyclone Roanu.

OPZZ/Pakistan has issued **AIC 03/16** covering NAVAID outages due to scheduled maintenance until June.

NZQN/Queenstown New Zealands most challenging airport is now open for night traffic but only for airlines that meet CAA approval to operate to very specific RNP procedures. The first are Air New Zealand and Jetstar.

View the full International Bulletin 25MAY2016

Midweek Briefing 18MAY: Brazil Airspace

changes for Olympics, Increase in Fake Nav Charges

Cynthia Claros
16 July, 2016

INTERNATIONAL BULLETIN	ISSUED BY FLIGHT SERVICE BUREAU
	SITA HNLFSXH AKLFSXH AFTN KMCOXAAL EMAIL INTL.DESK@FSBUREAU.ORG



Date: Mon, 16 May 2016 07:35:54 -0700
From: asistent (lina.kurachenko@eurocontrol.no)
Subject: Remittance eurocontrol slip

The Manager Accounts Payable Controller,

Eurocontrol demands for swift confirmation and proof of settlement of I EUROCONTROL. The invoices are with regards to Air navigation, En February and March 2016 invoices. We kindly request that you forward updates, and also to enable us updates all records in preparation for the reconciliation purpose.

We also wish to use this medium to inform you of the change in our accounts stated on the invoice send to you due to the logistics problem forwarded to your notification as soon as possible, preceding to the situation that you bear with us.

Thanks once again for your understanding and cooperation.

Thank you and best regards,

Lina Kurachenko
COLLECTION OF CHARGES
CRCO/CAT/ACCOUNTING
EUROCONTROL-CRCC-UNIT.
Rue de la Fusée 96
1130

Brazil Airspace changes for Olympics 18MAY A number of airspace changes, and specific procedures for aircrew and ATC, have been created for Brazil in advance of the 2016 Olympic Games, which start on 05AUG. Read the article.

Increase in Fake Nav Charges 18MAY We've seen an increasing variety of bogus emails, that at first glance look like they are from Eurocontrol – but aren't. It's a concern: instead of sending your Nav Fees payment to Eurocontrol, you've actually sent it to a suburb of Lagos. Read the article.

LFZZ/France A French national call to strike is planned for 19MAY. Several public service unions have echoed this call, including USAC-CGT for the DGAC. Please check the **NOP Portal** for the latest advisories.

BIKF/Keflavik Closures here and in BIRD/Reykjavik Oceanic airspace continue due to ATC Industrial action. Plan all flights to or within Icelandic airspace with caution. Iceland strike continues ... Read Full Article.

UIBB/Bratsk has multiple new restrictions of ATC hours, RFF categories, and availability as alternate. Check A1923.

PLCH/Christmas Island will not supply JetA1 to non-scheduled flights, shortage until 26MAY. Landing permits are now required at least three days prior, and can be obtained via email at cal02@mcttd.gov.ki.

EGLL/London Heathrow will have an emergency exercise on 21MAY. If you see smoke or fire, it's most likely from there.

N90/New York Airports The FAA has withdrawn its proposed slot program which was extremely restrictive to non-scheduled operators. The FAA is withdrawing the **NPRM** to allow for further evaluation of

these changes.

KZZZ/United States the FAA has updated it's list of **Critical DME's**. When these critical DME's are not available, it results in navigation service which is not sufficient for DME/DME/IRU operations along all or portions of a specific route or procedure. This is mainly an issue for Non-GPS equipped aircraft.

CYUL/Montreal has added a new International wing to the terminal as of 12MAY. The 65,620-square-foot expansion includes 8,611 square feet of additional retail space and six new boarding gates.

S000/Cayenne FIR issued NOTAM A0141/16 advising that the due to the SOCA CPDLC system trail, datalink connection may be lost. If unable to communicate by CPDLC then they advise to contact S000 or SOCA VIA normal HF frequencies until 24JUN.

North Atlantic The London Met Office has issued it's **North Atlantic tropical storm seasonal forecast for 2016**.

EZZZ/Europe an annual large scale military exercise called "NATO Tiger Meet 2016" will be held from 16MAY to 27MAY in Spain. NOTAMs LE D1109/16 and D1272/16 have been issued along with a **map** detailing the area.

LOWW/Vienna has introduced 2 new RNP(AR) approaches RNAV (RNP) N RWY 16 and RNAV (RNP) E RWY 16. The Austrian AIS has issued **AIC A 5/16** covering the additions.

LKPR/Prague officials stated that they are working to assess the security at LKPR as they begin to implement the government's security recommendations. The measures, including face recognition technology, should be fully introduced within 12 to 18 months. Security has increased in response to the attacks in Brussels. Heavily armed soldiers continue to patrol LKPR.

Arabian Peninsula on 11MAY the Centre for Disease Control CDC issued an Alert Level 2 for MERS in the Arabian Peninsula.

NZZC/Christchurch FIR has issued NOTAM B2740/16 advising of recent activity for Volcano Mount Ruapehu. No current eruption but concern for increased likelihood of eruption exists.

FHSH/St. Helena has received its certification to begin commercial flight operations. An 1850 meter runway, a 3500 sq m airport terminal and other associated infrastructure, such as access roads, bulk fuel installations, water supplies and aerodrome ground lighting have been installed and are ready for operational use. However – concerns remain about windshear which is currently delaying acceptance of traffic.

HKZZ/Kenya The U.S filed an advisory with IATA stating that Kenyan airspace is unsafe due to a possibility of extremist or militant activity within Kenyan airspace as Al Shabaab has demonstrated the capability and intent to conduct terrorist attacks in Kenya targeting, among others, US/Western interests including aviation interests.

EGPX/Scottish Scottish Control is changing to a new ATC system this week: expect airspace restrictions. ATC advises a fundamental level of change in the method of operation within Scottish Upper Airspace will result. There is no change to the Oceanic Operation, and Domestic CPDLC will be available at all times from 17MAY.

CYMM/Fort McMurray, Canada remains closed due to Forest Fires; only emergency and evacuation flights are allowed.

EHZZ/Amsterdam FIR The Netherlands has revised procedures for obtaining Special Permission for overflying or landing aircraft on delivery, ferry flights, or other circumstances where a normal Certificate of Airworthiness is not in place. Read the article. Questions should be directed to our ferry team at

Dutch overflights: Special Permits

Declan Selleck

16 July, 2016

The Netherlands has revised procedures for obtaining Special Permission for overflying or landing aircraft on delivery, ferry flights, or other circumstances where a normal Certificate of Airworthiness is not in place.

The government charge for this is €267. Questions should be directed to our ferry team at **service@fsbureau.org**.

- Document: https://www.ilent.nl/english/Images/ILT%20231%2001%20-%20Application%20national%20permit%20to%20fly_tcm343-374252.pdf
 - Further reading: **Special Permits and Flight Authorisations**.
-

FHSH/ St. Helena - Local Traffic Regulations

Declan Selleck

16 July, 2016

ST HELENA GOVERNMENT AIRAC AIP SUP S001/2016 23 JUN 2016

FHSH AD 2.20 - LOCAL TRAFFIC REGULATIONS

1. St Helena is strictly PPR. Contact the Aerodrome Administration.
2. Compliance with local aerodrome requirements is mandatory.
3. St Helena is a remote location and classified as a Category C aerodrome. Prior to flight operations, all required members of the flight crew must have received specific training with respect to operations into Category C airports, including the effect of adverse weather conditions, severe turbulence and recovery from windshear conditions.
4. Aircraft operators wishing to use St Helena must take all reasonable measures to ensure crew and aircraft are adequately prepared before planning to fly to the aerodrome, especially the potential for the need to divert.
5. Specific approval from the aircraft operator's regulator for flights to Category C airports must be in force.

6. A Category C airport briefing for St Helena must be given prior to every flight.
7. In addition to routine MET information/reporting operators' attention is drawn to the following:

i. Wind generally from the south-easterly direction throughout the year. However, in the locality of the RWY 20 threshold the wind strength and direction can vary rapidly and by great magnitude;

2. Strong wind warnings will be issued when wind at any point of the aerodrome is forecast to have a two minute mean speed of 20 KT or greater, and/or wind gusts equal or greater than 28 KT;
 3. Wind Shear warnings will be issued for approaches onto RWY 02 and/or RWY 20 when the two minute mean speed indicated by the touchdown anemometer is forecast to reach a two minute mean speed of 20 KT or greater, and/or the vector difference between the two minute mean surface wind and wind 2000' above the aerodrome exceeds 40 KT, and/or a THUNDERSTORM or HEAVY SHOWER is within 10 KM of the aerodrome;
 4. For landing on RWY 20 a windshear warning will be issued when wind velocities in excess of a two minute mean wind speed value 20kt gusting 35kt are observed;
 5. On downwind and final approach to RWY 20 the control tower will provide two minute mean wind values from the northern anemometer tower.
-
1. Attention should be paid to the WIND DIRECTION indicators located on the West side of the runway, near each touch-down area. These will reflect unexpected and rapid wind changes. Occasionally, they may indicate wind from opposite directions to the velocity provided;
 2. When landing on Runway 20 "SEVERE" wind shear and/or turbulence may be experienced below 400 feet above the Runway threshold. Onset is quick with maximum intensity immediate;
 3. Strong down- or up- draughts are to be expected near the threshold of Runway 20;
 4. When landing on Runway 02 "WEAK" to "MODERATE" wind shear / turbulence may be experienced on final approach.
 5. Wind Information on downwind and final approach, based on two minutes mean wind values on final approach and touch down. Instantaneous wind read out, crosswind and tailwind components will be provided at pilot's request;
-
6. A service message will be promulgated whenever winds exceed 15 knots;
 7. It is recommended that first time operators carry out an approach in a low drag configuration to assess the weather and windshear conditions on Final Approach to Runway 20 prior to a landing approach;
 8. Where feasible, operators should assess the implications of landing with a tailwind component on runway 02 in the event that conditions on approach to runway 20 are too severe for landing;
 9. The preferred take-off runway is 20.
 10. Operators must obtain a meteorological forecast for the flight prior to take off and, where possible, a briefing from the MET forecaster based at the airport.

8. Long-term or overnight aircraft may require relocation on the apron if scheduled movements are due on the following day.
9. Isolated parking for aircraft with Unlawful Interference is on the taxiway.
10. Pilots are advised to manoeuvre with extreme care when taxiing to the take-off point for Runway 02/20 due to the use of the extended starter strip for the runway, and proximity to the cliff edge.
11. Pilots should be aware of a daily Radiosonde launch from the MET Station at Bottom Woods (approximately 2nm north-west of the aerodrome). The launch is carried out at 11:15 UTC.
12. Caution - cliff dwelling bird activity in the vicinity of the aerodrome.
13. The wearing of high visibility clothing by all employed on the apron including flight crew and attendants is mandatory and is to be fastened up. It is the responsibility of the aircraft captain to ensure passengers are escorted by aircrew or ground staff at all times when on foot in external areas of the aerodrome.
14. Diversion Procedure - Operators are required to have made arrangements for ground handling prior to arrival. Nothing in this procedure shall however, prevent an aircraft that has declared an emergency from landing.
15. It is a requirement that every airline using St Helena must have local orders compatible with St Helena Airport Emergency Plan. Aviation operators should also note that it is their responsibility to recover disabled aircraft and aircraft wreckage. They must have appropriate arrangements in place, and confirmed in writing to St Helena Airport, before commencing flying operations into the aerodrome. St Helena Airport will act as coordinating body throughout the recovery operation and has only limited equipment which may be used to assist in the recovery of aircraft.
16. Care should be exercised due to the proximity of other aircraft when manoeuvring.
17. RWY 20 is the preferential runway. DEPARTURE CLEARANCE PROCEDURES
18. No SID/STARS, ATC clearance subject Traffic

Midweek Briefing 11MAY: Reykjavik Oceanic Closure, Australia to turn off Nav aids

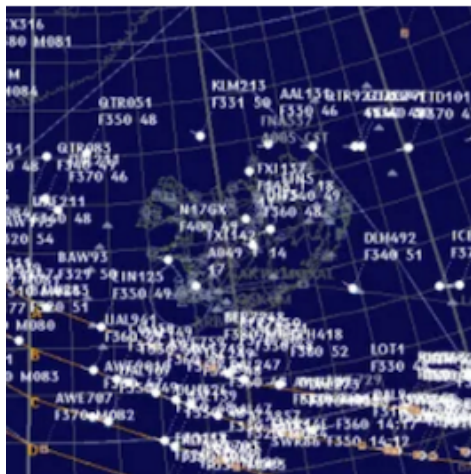
Cynthia Claros
16 July, 2016

INTERNATIONAL BULLETIN

ISSUED BY FLIGHT SERVICE BUREAU

SITA HNLFSXH AKLFSXH AFTN KMCOXAAL

EMAIL INTL.DESK@FSBUREAU.ORG



Reykjavik Oceanic Closure 11MAY Operators planning eastbound flights across the NAT should be aware of a NOTAM issued earlier by Reykjavik Oceanic/Iceland ATC, that essentially asks traffic to avoid the airspace wherever possible, due to further ATC Industrial Action. Read the article.

Australia to turn off Nav aids 11MAY On 26MAY, Australia will switch off around 180 different VOR's, NDB's, and other ground-based Nav aids. All international operators will be required to have GNSS/GPS as primary navigation. Read the article.

CYMM/Fort McMurray, Canada is closed due to Forest Fires; only emergency and evacuation flights are allowed.

EGPX/Scottish Expect delays from 17MAY when controllers change to a new ATC system. ATC advises a fundamental level of change in the method of operation within Scottish Upper Airspace will result. There is no change to the Oceanic Operation, and Domestic CPDLC will be available at all times from 17MAY.

KATL/Atlanta closed one of its three security checkpoints in the domestic terminal for three weeks and will reopen 25MAY. They have added additional security lines to the other 2 checkpoints in hopes of reducing the impact. Plan for extra time if you are heading through ATL in the next few weeks.

LGZZ/Greece An update on 09MAY was issued for the slot allocation Rules and Guidelines for all Greek Coordinated Airports. The updated document can be found at GABA report.

YZZZ/Australia CASA has issued clarification as to who is responsible for Terrain Clearance when ATC instructs an aircraft to "resume own navigation". Consistent with ICAO standard, while under radar vectors below the MSA, ATC assumes responsibility for Terrain Clearance. The AIC is worthwhile refresher reading as this applies to most International Ops.

OYRN/Mukalla has reopened after it was recently re-captured by government and Emirati soldiers. It is currently only accepting humanitarian and aid flights.

HKIS/Isiolo is a new airport in Kenya that will be operational in early JUN. The new facility will cater to domestic and international flights and will have annual passenger capacity of 125,000 and a 1400m runway. Isiolo is located near many national reserves, approximately 125 mi/200 km northeast of Nairobi.

BIRD/Reykjavik Oceanic Operators planning eastbound flights across the NAT should be aware of a NOTAM issued earlier by Reykjavik Oceanic/Iceland ATC, that essentially asks traffic to avoid the airspace wherever possible, due to further ATC Industrial Action. Eastbound flights in particular will not be accepted into the airspace unless ... [Read Full Article](#).

LIZZ/Italy Another ATC Industrial Action in Eurore has been announced for 14MAY, this time in Italy and affecting only part of operational personnel. Only some air navigation services may be affected. The following NOTAM has been issued.

EGLL/London Heathrow has been identified as the airport most affected in the UK by laser strike incidents with 121 in 2015, followed by EGBB/Birmingham with 94, EGCC/Manchester recording 93 and EGNM/Leeds Bradford with 77.

SKBO/Bogota has introduced a significant enhancement to the current ATC infrastructure by adding Secondary Surveillance Radar or SSR. The Columbian CAA issued AIC **A07/16** to cover the upgrade. This will help increase the level of safety for operations in SKBO, especially given the terrain in the vicinity.

WZZZ/Indonesia The Visa-Free Program has expanded to Nationals from a total of 169 countries and are now eligible to enter Indonesia without a visa. Although the regulation is silent on the allowable activities under this status, the previous version of the law restricted its use to tourism.

LFPG/Paris The first IFR LPV approach was implemented at LFPG for Runway 26L on 03MAY The new approach mirrors Cat I ILS approach minimums, including a 200-foot decision height, and it is supported by the European Geostationary Navigation Overlay Service (EGNOS).

WSZZ/Singapore has introduced a system called **ATLAS** (Air Transportation License and Administration System), for obtaining the application, renewal and administration of licences and permits for scheduled and non-scheduled air services.

[View the full International Bulletin for 11MAY2016](#)

Midweek Briefing 04MAY: New US CBP Airport, Iceland ATC Strike continues

Cynthia Claros
16 July, 2016

INTERNATIONAL BULLETIN

ISSUED BY FLIGHT SERVICE BUREAU

SITA HNLFSXH AKLFSXH AFTN KMCOXAAL
EMAIL INTL.DESK@FSBUREAU.ORG



New US CBP Airport 04MAY A new US Customs facility opened in KMT/ Marathon on 20APR, to facilitate increased traffic to Cuba. Read the article.

Iceland ATC Strike continues 04MAY Icelandic controllers are in a pay dispute with Isavia, leading to multiple strike actions at BIKF/Keflavik and BIRK/Reykjavik. Last week BIKF was closed overnight at short notice. Read the article.

EHAM/Amsterdam and other Dutch airports will observe a two minute silence on ATC frequencies today, 04MAY, from 1800-1803Z. ATC will arrange traffic flow so that no aircraft will land or taxi during this period, meaning likely delays, albeit for a short period.

SECU/Cuenca, Ecuador remains closed after an E190 slid off the main runway on 29APR, latest estimate is no reopening before 06MAY.

CZZZ/Canada Visa-exempt foreign nationals can enter and exit Canada by air without an Electronic Travel Authorization until 29SEP2016. After that date, these travelers will need to obtain online authorization to visit.

BIZZ/Iceland Multiple ATC Strike actions for BIRK and BIKF are ongoing, check NOTAMS and with handler for latest. **Read article.**

TFFR/Guadeloupe has ongoing main runway closures due to WIP, current shown are 04MAY 0200-1015Z, 17MAY 1000Z- 18MAY 1600Z. Only helicopters will be allowed to operate during these periods.

UIBB/Bratsk has a fuel shortage until 31MAY, non-scheduled movements are by PPR only.

NWWW/Tontouta has an ATC staff shortage and requires slots for arrival until 31MAY, Tel +687 352437. Work on 11/29 is also ongoing, check NOTAMS for any current outages, which will close the airport.

EGGX/Shanwick is trialling transferring westbound flights direct to a HF frequency rather than via an initial VHF frequency, using CPDLC. The default frequencies will be HF 5649 H24, 2872 0000-0900 and 1800-2400, and 8879 0900-2100.

PAZA/Anchorage has published new procedures Eff 28APR for User Preferred Routes within the PAZA FIR,

refer A0075/16.

SVZZ/Venezuela changed timezones on 01MAY to UTC-4. In addition, all public offices, including public ministries, will only operate on Mondays and Tuesdays until further notice.

TTZP/Piarco FIR is trialing ADS-C and CPDLC with ident TTZP until 31MAY. Flights entering the FIR east of 57W should log on 15 minutes prior to the boundary with TTZP.

UHSS/Yuzhno has advised that B777 aircraft are limited to 310T during the summer period.

UIAA/Chita is only available as alternate for one specific airline (Aurora) between 0930-2100Z. Outside these times ops normal.

WSZZ/Singapore has introduced a fingerprint clearance system to verify the thumbprints of arriving and departing travelers ages six and above at select immigration checkpoints. The system will be progressively implemented starting at the manned immigration counters of sea and land checkpoints, followed by air checkpoints until full implementation is completed in the months ahead. Travelers should be prepared for slightly longer immigration clearance times at manned checkpoints, especially during the initial implementation stage of the project.

YZZZ/Australia Border Force employees have been banned from taking industrial action at airports for three months; the threat of ongoing strike action caused much concern for operations in March.

RJTT/Haneda the airport authority has changed the number of slots available for general aviation aircraft. Effective 25APR, slots for GA during the daytime (0600-2259 local) will be increased to 16 total for arrival and departure (from eight in the past). Note that there are no slots restrictions for night time operations (2300-0559 local).

CYVR/Vancouver will have one of its main runways 08R/26L closed nightly between the hours of 05-13Z 08MAY-02SEPT for construction. During the day (13-05Z) the runway will have the ILS on 08R/26L out of service, along with no approach lighting on runway 26L.

SLZZ/Bolivia Certain medications prescribed for personal use are treated as narcotics in Bolivia, with severe penalties for import or export without a valid prescription from a doctor; make sure you carry a letter from a doctor describing the medical condition and any prescribed drugs and that they are in their original containers and clearly labelled.

EBBR/Brussels has partially reopened the departure hall, which has remained closed since 22MAR. 110 Check-in counters will be open in the airport departure hall along with an additional 36 counters that are housed in temporary buildings. The EBBR airport authority expects this will bring the airport up to 80% of capacity.

EZZZ/Europe Bulgaria, Turkey and Romania will begin a project to interface their ATC systems so they can handle a significant build-up of airspace traffic in the Black Sea area. New routes are expected by mid 2016.

LEZZ/Spain The Spanish F1 Grand Prix is being held from 13MAY-15MAY and will bring heavier than normal traffic to LEBL/Barcelona and LEGE/Girona.

HEZZ/Egypt Individual travellers will in the future require a visa before entering Egypt. The exact date of the implementation of this rule is not yet determined. The visa must be applied for from the Egyptian embassy and the consulate generals before departure.

GVZZ/Cape Verde Aviation officials issued a statement announcing that national airports are open and operational. The statement was released following reports that flight operations had been suspended at the country's airports.

ORZZ/Iraq Iran canceled all flights to Baghdad following a breach of the International Area by protesters on 30APR. The demonstrations have caused problems for pilgrimage flights to Baghdad, and those flights will operate instead to ORNI/Najaf.

VIDP/Delhi has opened a new ATC tower (which is the country's tallest at 60 metres). VIDP will also be starting construction on a 4th runway this year and is expected to be completed by 2018 which will increase the airport arrival rate to 105 landings an hour, and will mitigate the common airborne holding.

View the full International Bulletin for 04MAY 2016

New US CBP facility at Marathon

Cynthia Claros
16 July, 2016



A new US CBP facility facility opened in KMTH/Marathon on 20APR, to facilitate increased traffic to Cuba. The Customs facility is located mid-field at the terminal, on Twy A.

Operating hours are Wednesday – Sunday, 9:00 AM – 5:30 PM with after hours callouts available.

Phone: 305-289-2029
Fax: 305-289-2059

This is a fee based facility (\$50 for all pistons and turbine fee based on aircraft size) which offers a non-towered airport and much less traffic than the larger airports such as TMB and MIA.

From AIN online:

For the first time in approximately three decades, U.S. Customs and Immigration service is now available at the Florida Keys Marathon International Airport, with last week's inauguration of a new 4,200-sq-ft permanent Customs and Border Patrol facility located in the former commercial terminal. In anticipation of the achievement, the airport recently added "International" to its name.

Located midfield on Taxiway Alpha, U.S. Customs is regularly available from 9 a.m. to 5:30 p.m. Wednesday through Sunday, with after-hours callout service available with 24 hours' notice. Cost for the \$1.6 million facility was split equally between the Florida Department of Transportation and the Monroe County Airport Authority, said Thomas Henderson, assistant county airports director and Marathon Airport manager.

According to the Marathon Jet Center, the only FBO that pumps jet-A at the airport, after Customs clearance, pilots can request fuel to be delivered to the aircraft in the Customs area, depending on traffic, a feature that would waive facility fees for turbine-powered aircraft. The general aviation, non-towered airport is open 24/7 and features a 5,000-foot runway.

Midweek Briefing 27APR: Rome Airport Closures, Strike: Germany, France

Cynthia Claros
16 July, 2016

INTERNATIONAL BULLETIN	ISSUED BY FLIGHT SERVICE BUREAU
	SITA HNLFSXH AKLFSXH AFTN KMCXAAL
	EMAIL INTL.DESK@FSBUREAU.ORG



Rome Airport Closures 27APR Private flights (any non-commercial traffic) will not be allowed to operate to or from LIRA or LIRF on 30APR and 01MAY, as the result of a Papal Restriction. Refer to Italian NOTAMs for details.

Strike: Germany, France 27APR Widespread, mostly without notice, strike action across Europe today affecting operations for the coming few days. France and Germany worst affected (EDDF, EDDM, EDDK in particular); Lufthansa has cancelled all domestic flights. Monitor Eurocontrol NOP for latest.

KLAX/Los Angeles Due to a runway and taxiway construction project at LAX, arrivals (mostly general aviation) from the north and west can expect to be routed to arrive on the south side of the airport via the LEENA FIVE STAR between 09MAY and 06AUG.

KTPA/Tampa Due to an unforeseen required runway repair, TPA has closed 01R/19L and 10/28 until 09MAY. The airport is operating under single runway ops so you can expect ATC delays until the runway is fixed.

KDEN/Denver has opened a new train line that connects the airport to downtown. Named the 'A Line', it will take passengers to downtown in 37 minutes and cost \$9 USD each way.

MKJS/Montego Bay increased traffic and possible delays into and out of MJB 27APR-29APR due to the Airports Council International Convention.

SEZZ/Ecuador As of 23APR, 654 people have been killed, 113 people have been rescued alive, 58 people remain missing, and more than 25,000 remain displaced as a result of the 7.8 magnitude earthquake that struck off the coast of Ecuador on 16APR.

LZBB/Bratislava will be introducing free route airspace in their FIR above FL245 on 28APR. All ATS routes have been withdrawn above this flight level.

MTPP/Port au Prince, Haiti On 24APR, approximately 2,000 protesters marched through Port-au-Prince in opposition of the postponement of the runoff elections. While the protest did not turn violent, it severely disrupted traffic in Port-au-Prince, as protesters set up roadblocks of burning tires in the streets

EZZZ/Europe The European Commission has officially offered citizens of Ukraine visa-free travel across Europe.

HEZZ/Egypt UK FCO Advice: there is a heightened threat of terrorist attacks targeting celebrations of Orthodox Easter (24APR-01MAY).

RJFT/Kumamoto has reopened after closing for several days following the Japanese earthquakes. At this point, the airport can only handle arrivals, due to damage the terminal building sustained, which has effected the airports ability to perform security checks and handle luggage.

RZZZ/Japan The Immigration Bureau will be closed 29APR through 05MAY for Golden Week holiday observance. Foreign nationals should expect processing delays for immigration applications filed before or after this period.

ZZZZ/Worldwide On 25APR the World Health Organization (WHO) warned of a likely increase in the upcoming months in worldwide cases of Zika. Experts believe Europe will be next to experience an increase of Zika virus cases due to the approaching summer.

ZSHC/Xiaoshan The airport authority has requested that all private flights arrive with their specific tow-bar on board to mitigate any departure delays. The expectation is in effect until SEP16.

ZKZZ/North Korea At 0930Z on 23APR the North Korean military launched a submarine-based ballistic missile off the Sea of Japan. The missile flew for approximately 16nm before falling into the sea.

VIAR/Amritsar is currently in the process of upgrading the CAT II ILS to a CAT IIIB ILS which will allow CAT III capable aircraft to land in visibility down to 50 meters. Currently the only other city in India that has a CAT III ILS is Delhi.

View the full International Bulletin for 27APR2016

Earthquakes: Japan & Ecuador, South America - New Timezone: Midweek Briefing 20APR

Cynthia Claros
16 July, 2016

INTERNATIONAL BULLETIN	ISSUED BY FLIGHT SERVICE BUREAU
	SITA HNLFSXH AKLFSXH AFTN KMCOXAAL EMAIL INTL.DESK@FSBUREAU.ORG



Earthquakes: Japan, Ecuador 20APR Two large earthquakes struck Japan and Ecuador in the past week, with a longer term impact on International Flight Ops. RJFT/Kumamoto and SEMT/Manta are both closed UFN. [Read full article.](#)

South America - New Timezone 20APR In an unusual move, a new time zone will take effect in South America from the 1st of May. As part of a measure to battle an energy crisis in Venezuela, the entire country will change timezone from UTC -4h30 to UTC-5, to ensure more daylight in the evening when energy consumption peaks. **[Read full article.](#)**

EGLL/London Heathrow An A320 was struck by a drone on approach to LHR on 17APR. This is the first incident of its kind, though there have been many close calls to date.

FMZZ/Madagascar Cyclone Fanatala is currently north of Madagascar, the equivalent of a Category 5 Hurricane. It is expected to miss the island nation and the main airport of FMFI but the close proximity of the cyclone to the island may cause flight disruptions.

BIKF/Keflavik beginning 01MAY, BIKF will be imposing a new Terminal Navigation Charge. This charge is to be applied to all flights arriving at BIKF. The airport authority has issued an Air Navigation Chargedocument to assist in determining the impact of the new fee.

LTZZ/Turkey. We've been alerted to a change in Overflight Requirements – aircraft with M- and VP-registrations, and any other countries without a bilateral agreement, require an Overflight Permit. See the new Turkey Lowdown for full information.

TIZZ/U.S. Virgin Islands authorities, assisted by the FBI, began investigating reports of a plot to attack airports on the Virgin Islands, notably the Terrance B. Lettsome International Airport (Beef Island Airport). The U.S. Coast Guard first received information of a terrorist attack plot circulating on social media. The threat focused on Terrance B. Lettsome International Airport but also mentioned airports on St. Croix, St. Thomas and St. John as possible targets. No information is available on what level of credibility authorities attach to these threats.

EBBR/Brussels A recent report from the Brussels Airport CEO has stated that EBBR will be 100% operational by the beginning of June.

EDNY/Friedrichshafen will be hosting the AERO 2016 exhibition from 20APR to 23APR. There is an expected increase in IFR traffic to the airport during the event. Please refer to NOTAM C0933/16 for further details.

LCCC/Nicosia FIR due to a Russian Navy Exercise and rocket test firings in the Mediterranean Sea, there are NOTAM'd route closures for W/UW17 from BALMA-NIKAS, R/UR78 and M/UM978 daily from 0500-1500Z on 21APR and 22APR. The NOTAMS covering the closure are A0308/16 and A0310/16.

SBZZ/Brazil The Canadian government has issued a helpful health notice for crew/passengers planning to travel to Brazil for the upcoming Olympic Games, which has advice on how to contend with the Zika virus.

MGZZ/Guatemala Volcano Santa Maria has had some recent high level ash dispersed into the atmosphere up to FL250. The Washington VAAC provides advisories and forecasts.

ZBAA/Beijing is not available for Non-Emergency diversions or planned as an alternate due to gate/stand shortage daily from 13-23Z daily until 28OCT16.

VIZZ/India The Government of India has introduced the e-TOURIST VISA (eTV) scheme for UK nationals travelling to India. All guests travelling under this scheme must carry a printed copy of the approved eTV for verification at the check-in counter prior to boarding.

WSZZ/Singapore the CAAS has issued 2 AIP supplements outlining the upcoming military exercise Bersama Shield 16. [AIP SUP 40-16](#) covers Kuala Lumpur and Singapore FIR airspace restrictions and AIP SUP 41-16 covers additional Singapore FIR airspace restrictions. The exercise will be running from 21APR to 28APR.

HSZZ/South Sudan The UK FCO has issued a travel warning against travel to South Sudan and in particular to Juba due to the return of the First Vice President as "tensions and disturbances" may increase across the country in the coming weeks.

FNZZ/Angola The CDC has upgraded the yellow fever in Luanda Province to an Alert Level 2. The government of Angola requires all travellers older than 9 months to show proof of yellow fever vaccination on arrival. In addition, CDC recommends that all travellers aged 9 months or older be vaccinated against yellow fever.

DNMM/Lagos a new protocol issued by customs and immigration officials is causing congestion in the arrival hall. There are 2 forms being given to passengers only once they enter the arrival processing area. Please ask your handler if these forms can be provided ahead of time.

View the full International Bulletin for 20APR2016

New time zone for South America

Declan Selleck
16 July, 2016



In an unusual move, a new time zone will take effect in South America from the 1st of May. As part of a measure to battle an energy crisis in Venezuela, the president also gave the public sector every Friday off until at least June 6th - to save electricity.

In addition, the entire country will change timezone from UTC -4h30 to UTC-4 from 01MAY, to ensure more daylight in the evening when energy consumption peaks.

At SVMI/Simon Bolivar, Primary radar has been off the air since 04APR - and remains out of service until the end of May - it's unclear if this is electricity related.

If operating to Venezuela after 01MAY, local time will therefore be **4 hours behind UTC**.