

Busy Week in LA: Special Flight Procedures

Chris Shieff
6 June, 2022



It's a busy few days in the skies of **Los Angeles** this week.

A major political event - The Summit of The Americas - is happening there from June 6-10. A number of **TFRs** will become active affecting access to numerous airports throughout the LA Basin.

The FAA has now published the details, so let's take a closer look.

Update on Restricted Airspace

It looks as if some newer TFRs were issued after we posted this post. First up, **check the list** because we can't predict changes and they do happen.

But right now, we can see a few more like **2/5019, 2/5016, 2/5015** which might get in your way if you're not a scheduled commercial service. These don't supersede the other, they are for shorter time periods. But they are **a lot more prohibitive** (particularly if you're a GA or private flight wanting to get into KLAX).

Restricted Airspace

There will be four TFRs becoming active in the LA area. Three of them are further west near Santa Monica and Central LA, while the fourth is out east near Pomona. The upper limit of all of them is **2,999'**.

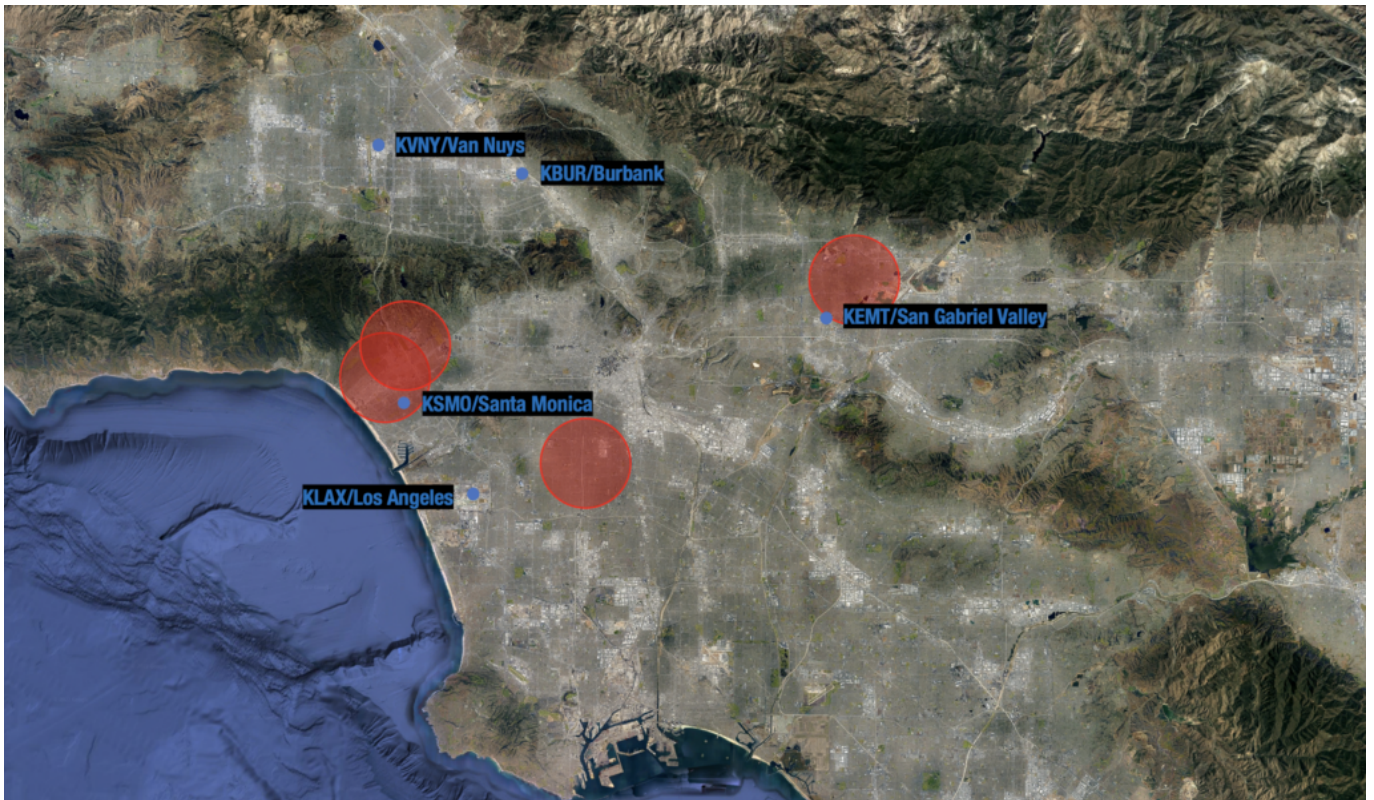
They will be active each day of the event at various times which you can access here.

If you're operating on a valid flight plan in or out of **KLAX/Los Angeles, KSMO/Santa Monica** or **KEMT/San Gabriel Valley** then you won't be affected.

Otherwise only **essential traffic** will be allowed through - SAR, medical, fire-fighting, or if you're experiencing an emergency.

If you *are* allowed into one, make sure you're squawking a discrete code. The FAA are reminding us that the timings and positions of the TFRs are subject to last minute changes, so keep an eye on the Notams

too. The current one is FDC 2/4276 - and it's a solid read. So, here's a picture, because we like pictures more.



Four TFRs will be activated at times this week, for the official FAA map, click [here](#).

Impact

The majority of **VIP movements** will be via KLAX/Los Angeles. Although they are possible at other airports too.

Traffic may be given priority to enter the queue which means potential holding, slow-downs or delaying vectors. The impact will likely be minor, but a little common sense may prevail here - consider topping the tanks off with some **extra contingency fuel** just in case.

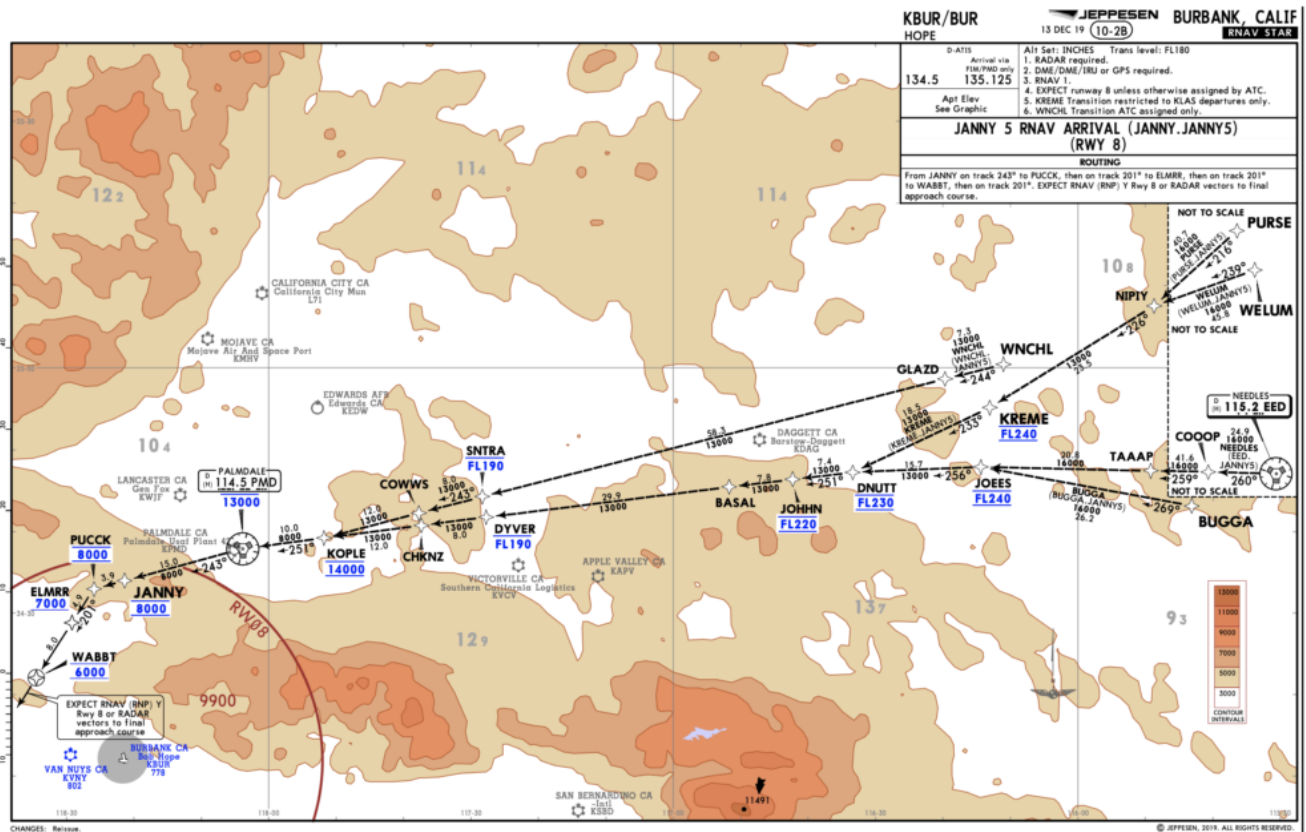
The largest impacts will be felt at **KVNy/Van Nuys** and **KBUR/Burbank** - flights in and out of these are not exempt from the TFR restrictions, so if you're heading in or out of one, here is what to expect:

Head-to-Head

Or in other words, **opposite direction operations** at both airports (weather permitting). It is not a normal configuration, and may take a little extra briefing - especially when it comes to traffic and runway awareness.

STARs (and not the Hollywood Type)

Over at KBUR/Burbank arrivals from the east can expect and plan for the JANNY 5 when the TFRs are active. This will temporarily replace the usual THRNE 3.



Arrivals into Burbank from the East can expect this arrival.

Overflights

SOCAL Terminal Area Control traffic which usually routes via V186, V201 and V459 can expect to fly via the Palmdale (PMD) VOR instead.

Other tower en-route control (TEC) routes may be unavailable during the next few days too.

I still have questions...

Detailed information on the TFR can be found on the FAA's official website, here. Or if you still have a conundrum to solve, you can contact Flight Service 800-992-7433.

Otherwise get in touch with us on team@ops.group and we'll do our best to help!