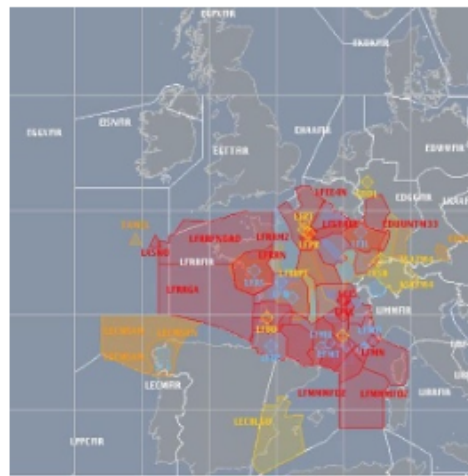


Midweek Briefing 01JUN: EASA Updates 'Suspect Aircraft' Guidelines, 8th French ATC Strike

Cynthia Claros

1 June, 2016

INTERNATIONAL BULLETIN	ISSUED BY FLIGHT SERVICE BUREAU
	SITA HNLFSXH AKLFSXH AFTN KMCOXAAL
	EMAIL INTL.DESK@FSBUREAU.ORG



EASA Updates 'Suspect Aircraft' Guidelines 01JUN EASA has published new guidelines for inspectors to assess which aircraft should be prioritised for SAFA ramp checks in Europe and SAFA compliant states. Read the article.

8th French ATC strike this weekend 01JUN Notification has been given by French ATC Unions of a Three Day Strike this coming weekend from Friday-Monday, starting at 0400Z Friday 03JUN. Read the article.

ZZZZ/China The new 144 hour visa-free rule is extended to Nanjing Lukou Airport of Jiangsu, Hangzhou Xiaoshan Airport of Zhejiang, and all air, sea and railway ports of Shanghai, including Pudong Airport, Hongqiao Airport, Shanghai Port International Cruise Terminal, Wusong Passenger Transport Center and all railway stations in Shanghai.

CYMM/Fort McMurray is scheduled to reopen 10JUN to regular commercial operations. The airport has been closed to normal traffic due to a significant forest fire.

MMAA/Acapulco after an outage lasting several years the ILS for RWY 10/28 is operational again.

KSEA/Seattle has runway 16C/34C closed until 27JUN for repairs. ATC initiatives possible through the construction.

EINN/Shannon and **EICK/Cork** will be testing a new "Remote Tower" system from 06JUN until September, where at quieter times the controller in Dublin will provide the ATC service to flights at Shannon and Cork. The IAA says airspace users will not notice the change. We think you might.

LFLL/Lyon will be re-numbering their runway to 17/35 from 18/36 in September.

VOTP/Tirupati will begin International operations beginning the end of June with flights to the U.S. The airport had recently upgraded their customs systems and other procedures.

LZZZ/Mediterranean Despite some reports, NATO operations in Libya appear unlikely. There are several new airspace NOTAMs, but is anyone still flying to Libya?

LFZZ/France due to ongoing protests at french oil refineries and fuel shortages the French CAA has advised to tanker in as much fuel as possible to help mitigate any issues. Please check with local handlers for any specific fuel constraints.

SPZZ/Ecuador Volcano Sangay is producing ash that extends up to 20,000 feet. Movement is towards the west at 10 knots. Please check with the Washington VAAC for the latest advisories.

LLBG/Tel Aviv, Israel On 26-27MAY strike action in the form of a work go-slow took place. The slowdown has primarily affected outgoing flights by increasing the time between takeoffs, but it has been reported that if the slowdown continues it will begin to affect incoming flights.

NVZZ/Vanuatu 27MAY a 5.0 magnitude earthquake struck west of Vanuatu. The quake was centered approximately 60 mi/95 km northwest of Port Vila and was measured at a depth of about 6 mi/10 km. No tsunami warning has been issued.

DAZZ/Algeria At 0054 local time (2354 UTC) on 28MAY, a magnitude 5.2 earthquake struck approximately 35 mi/55 km southeast of Algiers, the capital of Algeria. The epicenter of the earthquake registered a depth of approximately 7 mi/ 12 km. Following the quake, there were no reports of injuries or damage.

FNZZ/Angola A yellow fever outbreak has caused 301 deaths so far this year. The number of suspected cases is 2,536. The outbreak began in Luanda and has since spread to areas throughout the country, particularly along the coast and in the central regions, despite a large-scale vaccination program.

VDPP/Cambodia Political tensions are high in Cambodia following contested national elections in 2013. Arrest warrants have been issued for the leaders of the opposition CNRP party and the situation is unpredictable. On 30 May police blocked roads in southern Phnom Penh to prevent opposition CNRP supporters from carrying out a planned protest march. Further disruption is possible if the remaining leader is arrested. The opposition party has announced it will hold mass, non-violent, demonstrations and a number of unions have said they will strike in support.

LFZZ/France Despite recent strikes, the French government has stated it will not back down from labor reforms despite street protests and refinery blockades. The CGT Union has threatened to disrupt the upcoming Euro 2016 soccer tournament if the government does not back down; however, after meeting with representatives of the oil industry, government officials stated that the situation at fuel depots is improving.

Ramadan starts on 06JUN, for one month. If you are operating to any Islamic countries, expect the usual slowdown in work, longer processing times for permits, and closures.

OEZZ/Saudi FIR Saudi Arabia has intercepted a ballistic missile that was fired from Yemen, after which Saudi aircraft bombarded the missile's platform. A Saudi official stated that the country may reconsider the kingdom's truce with Yemen, as a result of the strike. The missile launch was the second strike in May.

RCZZ/Taiwan On 31MAY, a 6.1 magnitude earthquake struck approximately 70 mi/115 km northeast of Taipei. The quake was measured at a depth of about 150 mi/240 km. There were no reports of damage, and no tsunami warning was issued.

UKZZ/Ukraine On 29MAY, attacks by pro-Russian rebels in eastern Ukraine, violating the ceasefire signed in February 2015, killed five Ukrainian military officers and wounded four others. The latest attacks follow a 24 May report released by Ukrainian authorities, stating seven soldiers were killed on that day, making it the deadliest day for Ukrainian forces since August last year.

KZZZ/USA The State Dept has issued a warning to arriving travellers this summer to make sure that they have all necessary documents to enter the United States – there have been multiple changes to the rules this year (see Active Bulletins below for more on this).

View the full International Bulletin 01JUN2016

What is this, 20 questions?

Cynthia Claros

1 June, 2016



Yes. We've got a fresh set of **common International Operations** questions, together with their answers and references. Test yourself, use as part of your next refresher training, or forward to a colleague.

Thanks to our **OpsGroup** member Guy Gribble for these; Guy is an international airline pilot and runs a training organization called International Flight Resources – read more at the end of the questions about what he does.

20 Questions - INTERNATIONAL OPERATIONS

1. What is the term 'IFBP', and where you might use it?

This is sometime referred to as an "IATA broadcast". This is a specially formatted position report to enhance situational awareness in remote areas with poor ATC coverage. It is specifically recommended to be used in specific areas of Central Africa:

- A) On 126.9.
 - B) When operating off airways.
 - C) For flight level changes only.
 - D) Throughout most of the continent, as a backup to ATC, and as an awareness tool for other aircraft.
- Broadcasts should be made in the format published on the Jeppesen Africa High/Low Enroute 1 / 2 enroute chart.

In-Flight Broadcast Procedures, IFBP can be found [here](#), and Traffic Inflight Broadcast Area, TIBA can be found in Annex 11, Attachment B.

2. Is it possible to receive a North Atlantic oceanic crossing clearance via data link if sitting on the ground at an airport close to the oceanic boundary?

Yes. If less than 45mins to the OEP, request datalink (RCL) clearance 10mins prior to engine start-up. [NAT Document #007, Paragraph 5.1](#)[NAT Operational Bulletin, #2010-008](#)

3. When are passengers entering the United States on a Private/Part 91 flight required to have a visa?

US Citizens do not require a visa. Non-US citizens require a visa if they are not a citizen of a country that the US permits a waiver from. The Visa Waiver Program (VWP) is administered by DHS and enables eligible citizens or nationals of designated countries to travel to the United States for tourism or business for stays of 90 days or less without first obtaining a visa. Examples of VWP approved countries are: Australia, Belgium, Chile, Denmark, Japan, Germany and the United Kingdom. Note that the **Aircraft Operator** must also be approved under the VWP.

<http://www.cbp.gov/travel/international-visitors/frequently-asked-questions-about-visa-waiver-program-vwp-and-electronic-system-travel>

4. I got a TCAS/ACAS Resolution Advisory on my last trip in the US. Do I have any reporting requirements?

Yes – if there was a substantial risk of collision. In 2010 the NTSB implemented additional reporting requirements. If an RA was received when an aircraft was being operated on an IFR flight plan, and compliance with the advisory is necessary to avert a substantial risk of collision between two or more aircraft – then a report to the NTSB is required.

[NTSB 830.5 \(10\)](#).

5. What defines a Gross Navigation Error (GNE)?

Lateral errors of 25 nautical miles or more from the aircraft's cleared route. Note: The North Atlantic Systems Planning Group (NAT SPG), in its Conclusion 48/21 of 06/12, reclassified a GNE as a "lateral deviation from a cleared track by 10 Nautical miles (nm) or more." The FAA is examining this new ICAO NAT Region definition for possible adoption.

6. Short of calling a service provider how do you determine which countries require an Overflight Permit?

Research the AIP's from the overflown countries.

Search inside the "General" section, "National Regulations" and find the paragraphs titled "Entry, Transit and Departure..." Jeppesen provides excerpts from these documents in the "Entry Requirements" section.

7. I saw information that Russian ATC now has to speak "English Only" at all of their airports. Is this a fact?

Not quite. All international airports in Russia will pass information in Russian or English. The requirements for knowledge of the spoken English language will have to confirm the fourth level according to the ICAO scale. Six steps is the maximum.

Russia Federation AIP, Enroute ENR 1.7, Paragraph 6.1.3

8. Is there an HF frequency designated as "Guard" internationally (121.5 equivalent)?

Yes - 2182 and 4125, State the frequency in use, callsign, nature of distress/urgency, intentions of PIC, present position, altitude, heading

Annex 12, Chapter 2, Paragraph 2.6.5 "Note", AC 91-70a, Chapter 3, Paragraph 3.4c, 3-10

9. Explain why you would expect a time-delay when transmitting position reports and requesting clearances from oceanic communications facilities.

It is important that pilots appreciate that routine air/ground ATS Voice communications in the NAT Region are conducted via aeroradio stations staffed by communicators who have no executive ATC authority. Messages are relayed by the ground station to/from the air traffic controllers in the relevant OAC.

NAT Document #007, Chapter 6, Paragraph 6.1 and AC 91-70A, Paragraph 9-3b, 14-3d

10. I have an aircraft heading to Australia in 2 days; our handler just informed us that we needed to have bug spray can with serial number on board. Where I can get this?

Disinsection procedure with 2% Permethrin and 2% d-Phenothrin aerosols are used with this process. Top of Descent has not been approved by the FDA/FAA for use or sale in the USA. The claim it is not safe for flight attendants. It comes from Sydney. Most of the Hawaiian FBO's carry a good supply. Most operators opt for the "Pre-Embarkation and Top-of-Descent"

With approval from the Australian government on operator may conduct "On-Arrival" disinsection procedures. You do not have to empty the bottle. Spray rates are based on the cabin/cargo hold size. For

example: A Challenger 605 only requires 15sec spray duration.

Full details can be found at: <http://www.daff.gov.au/biosecurity/avm/aircraft/guidelines-operators>

11. We all dislike ramp checks, but what kind of stats can be gleaned from the SAFA program in EASA?

The stats below are taken from the latest summary from the EASA folks. SAFA program has been in-place since 1996. A new “force” behind the program is Implementing Regulation, Authority for Air Operations (ARO)-Ramp. This went active 27OCT14 and applies to EU countries (ECAC has also signed on).

- 2012 had just over 11,000 inspections performed, over twice as many as 2005.
 - Most frequent private operator’s country of registration inspected was USA, Isle-of-Man, Germany
 - Frequency of inspections is almost evenly split between EU and Non-EU countries. Largest number of SAFA locations were France (71), Italy (34), UK (31) and Germany (30)
 - On average, 40 of the 54 possible items were inspected each time with 46% of the findings labeled “Significant”
 - “Significant” findings are reported to the operator and the registered CAA. These will also require “Corrective action” prior to flight Latin American/Carib operators had the most number of findings, USA and African operators were tied for second place
 - Largest percentage of operators inspected, Germany (7.0%), Russian Federation and UK (6.8%), Turkey (4.9%) and USA (4.5%). France was 2.2%
-

12. When should a revised ETA be passed to ATC?

Position estimate time error of 3minutes or greater. Occurs when an aircraft’s reported actual time of arrival, ATA is 3 minutes or more before/after the estimated time of arrival, ETA.

NAT Doc#007 Paragraphs 5.1.7, 11.7.14. FAA ORDER 7110.82D, AC 91-70A Appendix 2, Page 8

13. Which Oceanic Control Agencies in the NAT Region have the ability to pass the crossing clearance via datalink ?

Via FANS/1A: New York OCA. **Via ACARS/AFIS:** Gander OCA, Shanwick OCA, Santa Maria OCA, Reykjavik OCA

NAT Document #007, Chapter 5, Paragraph 5.1.4 NAT Operations Bulletins #5,#6,#8

14. Is specific training required to be conducted in the area of Foreign ATC terminology and

verbiage?

No. Recommended reading on this subject:

[Annex 10, Volume 2, Chapter 5, ICAO Document #9432, UK's CAP 413 and the FAA's Pilot/Controller Glossary](#)

15. What is the term “SLOP” and the procedure for applying it?

Strategic Lateral Offset Procedure. Aircraft can fly in automatic tracking mode 1 or 2 NM to the right of centerline of the cleared course. Position reports are given as if you are crossing the actual waypoint. When entering and exiting oceanic airspace you must cross the actual waypoint. In 2014 ICAO and the FAA have begun studying SLOP, offsets in tenths of a nautical mile up to a maximum of 0.5 NM. This is being considered where the lateral separation minima or spacing between route centerline is 6 NM or more and less than 30 NM.

[ICAO Doc#4444, Chapter 16, Paragraph 16.5. NAT Doc#007, Paragraph 8.5. NOTAMS Domestic/International Part 3, Section 2, AC 91-70A, Paragraph 3-9 and Appendix 2, Page 8, FAA NAT Reference Guide, Page 5, FAA PAC Reference Guide, Page #6](#)

16. What navigation problems do I need to know about when operating at an airport such as CYRB/Resolute Bay, or BGTL/Thule Air Base/Pituffik?

Besides the extreme cold temps, ground based navigation facilities are reference to True North instead of Magnetic North. Aircraft FMC and Navigation displays will need to be re-configured to allow for IFR operations. This may be an automatic function or require manual selection. Individual AFM's will contain the details. This is also correct for the Canadian Northern Domestic Airspace.

[Canadian AIM Rules of the Air and Air Traffic Services Section 2.0 Para. 2.2.1 “Canadian Domestic Airspace”](#)

17. If executing published contingency procedures in NAT airspace is it necessary to submit an Assigned Altitude Deviation Report?

Yes. Anytime you deviate from your altitude clearance including TCAS/ACAS, turbulence or contingency events 300ft or more an Altitude Deviation Report Form should be filed.

[This form is found in NAT Document #007, Attachment 2](#)

18. If SELCAL isn't functioning in Oceanic/Remote airspace, can I continue the flight?

Yes, SELCAL meets the “Continuous listening watch” requirement of 14 CFR 91.511. If SELCAL is inoperative one of the pilots must listen on the appropriate enroute frequency for calls.

[Annex 6, Part 2, Paragraphs 2.5.1 and 3.7.1](#)

19. In Europe, what is a “Maintenance Release” and how do I get one for an FAA Part 91 Operation?

Very basically, the European inspectors are looking for an entry in an aircraft maintenance logbook (Technical Log) that reads something like, “Return to Service in Accordance with 14 CFR § 43.9. I certify that the work specified; except as otherwise specified, was carried out in accordance with FAA airworthiness regulations, and in respect to that work the aircraft is considered ready for release to service. Signed XXXXX AP#XXXXXX” The sub clause “except as otherwise specified” is intended for use with two types of deviations:

(1) The case where all required maintenance was not carried out. In this case, list the maintenance not carried out on the 14 CFR § 43.9 Return to Service and/or attachments.

(2) The case where the particular maintenance requirement was only EASA-approved and not FAA-approved. Example: an EASA Airworthiness Directive not approved by the FAA.

NOTE: In the case of maintenance carried out by a U.S.-based EASA Part-145 approved organization subject to the EASA/FAA agreement, EASA only recognizes the dual release FAA Form 8130-3 for component, engine, or propeller maintenance.

14 CFR 43.9, 43.11 and EASA 145.A.50, Rulemaking Interpretation # 13D51397 “Maintenance release of aircraft not covered by the Basic Regulation” and Annex 6, Part 1, Paragraph 8.8 and 8.4.1

20. I thought that with ADS-C the aircraft was sending position reports to a ground station (once logged on), Why do I have to make HF radio calls?

It depends on the OCA’s monitoring needs. If they state “Voice reports not required” then do not make routine voice reports. HF radios would be used to voice report position, maintain a back up to CPDLC. SELCAL would also have to be checked for functionality.

Global Operational Data Link Document (GOLD), 2nd Edition Chapter 5, Paragraph 5.6.3, NAT Document 007 Paragraph 6.1.22.

With sincere thanks to **International Flight Resources**. They are a pilot focused training provider emphasizing International Operations and Human Factors training with on-line and in-person training options. If you’d find a cost estimate, standard rate sheet and course outline useful, visit their website at www.InternationalFlightResources.com or email admin@InternationalFlightResources.com

Did you like these?

- Let us know: questions@opsgroup.co
- If you have a burning question that you’d like answered – let us know at questions@opsgroup.co. We’ll research it and include in the next round.
- If you haven’t already joined **OPSGROUP**, please do!

Midweek Briefing 25MAY: Cairo airspace - GPS jamming, Australia: new RNP rules (again)

Cynthia Claros
1 June, 2016

**INTERNATIONAL
BULLETIN**

ISSUED BY FLIGHT SERVICE BUREAU

SITA HNLFSXH AKLFSXH AFTN KMCOXAAL
EMAIL INTL.DESK@FSBUREAU.ORG



Cairo airspace - GPS jamming 25MAY Egypt notified operators yesterday that GPS jamming is a concern to HECA/Cairo arrivals and overflights, and warned against conducting RNP/RNAV arrivals or approaches. Read the article.

Australia: new RNP rules (again) 25MAY A last minute relaxation by CASA has exempted Foreign private operators from having to be RNP2 compliant, ahead of many Nav aids being switched off on Thursday. Foreign Commercial operators have a two year window to comply. Read the article.

LFZZ/France A French national strike is being called for on 26MAY by the DNSA. French Strike Regulation plan will be applied from 26/0400 UTC to 27/0400 UTC. Monitor NOP.

NTAA/Tahiti may not have fuel available from 25-28MAY due to strike action.

KZMA/Miami FIR A Falcon 9 rocket is set for launch from Cape Canaveral on 26MAY, a 2-hour launch window opens at 2140Z. 27MAY is the back-up day for the launch. Check KZMA/KZJX FIR NOTAM's for restrictions.

VECF/Kolkata has updated SATCOM and local phone numbers: Kolkata Oceanic is at 441921 or 00870762092876 and Area Control is at 441902 or 00913325119520. The Satcom numbers are routed through the public telephone system.

EBLG/Liege Not available from 1530-2000 due to Staffing issues (which may recur later in the week).

MZZZ/Mexico A new law in Mexico expands the business, tourist and transit visa exemption for up to 180 days to visa nationals with a Canadian, Japanese, Schengen or UK visa, effective immediately, and to visa nationals who are permanent residents of Chile, Colombia or Peru effective July 1. APEC Business Travel Card (ABTC) holders, certain airplane crew members remain eligible for this exemption.

MROC/San Jose On 21MAY Mount Turrialba erupted. The volcano is located approximately 30NM west of MROC. Some flights were cancelled in response to the eruption. Please monitor the **Washington VAAC** for further advisories.

EZZZ/Europe Eurocontrol has confirmed the date of 01JAN18 for all aircraft to be 8.33 kHz compliant. Currently 8.33 kHz is required only above FL195 but as of 01JAN18 it will be required below FL195 to the surface. Europe has an ongoing shortage of voice communication frequencies.

KZZZ/USA The U.S. Department of Transport has banned e-cigarettes from checked airline baggage over fire risks. This includes both passengers and flight crew.

USHH/Khanty-Mansiysk is closed until 30MAY at 1500Z due to the runway being repaired.

FACA/Cape Town FIR CPDLC/ADS-C is not available until 31MAY.

LLLL/Tel Aviv FIR has updated their security procedures for entering the the LLLL FIR. Please see **AIC 2/16**.

VGEG/Chittagong Flight operations at Chittagong airport have resumed after suspension due to cyclone Roanu.

OPZZ/Pakistan has issued **AIC 03/16** covering NAVAID outages due to scheduled maintenance until June.

NZQN/Queenstown New Zealands most challenging airport is now open for night traffic but only for airlines that meet CAA approval to operate to very specific RNP procedures. The first are Air New Zealand and Jetstar.

View the full International Bulletin 25MAY2016

Midweek Briefing 18MAY: Brazil Airspace changes for Olympics, Increase in Fake Nav Charges

Cynthia Claros
1 June, 2016

INTERNATIONAL BULLETIN

ISSUED BY FLIGHT SERVICE BUREAU

SITA HNLFSXH AKLFSXH AFTN KMCOXAAL

EMAIL INTL.DESK@FSBUREAU.ORG



Date: Mon, 16 May 2016 07:35:54 -0700
From: asistent (lina.kurachenko@eurocontrol.net)
Subject: Remittance eurocontrol slip

The Manager Accounts Payable Controller,

Eurocontrol demands for swift confirmation and proof of settlement of EUROCONTROL. The invoices are with regards to Air navigation, En February and March 2016 invoices. We kindly request that you forward updates, and also to enable us updates all records in preparation for it reconciliation purpose.

We also wish to use this medium to inform you of the change in our ac the accounts stated on the invoice send to you due to the logistics pro forward to your notification as soon as possible, preceding to the su plead that you bear with us.

Thanks once again for your understanding and cooperation.

Thank you and best regards,

Lina Kurachenko
COLLECTION OF CHARGES
CRCO/CAT/ACCOUNTING
EUROCONTROL-CRCO-UNIT.
Rue de la Fusee 96
1130

Brazil Airspace changes for Olympics 18MAY A number of airspace changes, and specific procedures for aircrew and ATC, have been created for Brazil in advance of the 2016 Olympic Games, which start on 05AUG. Read the article.

Increase in Fake Nav Charges 18MAY We've seen an increasing variety of bogus emails, that at first glance look like they are from Eurocontrol – but aren't. It's a concern: instead of sending your Nav Fees payment to Eurocontrol, you've actually sent it to a suburb of Lagos. Read the article.

LFZZ/France A French national call to strike is planned for 19MAY. Several public service unions have echoed this call, including USAC-CGT for the DGAC. Please check the **NOP Portal** for the latest advisories.

BIKF/Keflavik Closures here and in BIRD/Reykjavik Oceanic airspace continue due to ATC Industrial action. Plan all flights to or within Icelandic airspace with caution. Iceland strike continues ... Read Full Article.

UIBB/Bratsk has multiple new restrictions of ATC hours, RFF categories, and availability as alternate. Check A1923.

PLCH/Christmas Island will not supply JetA1 to non-scheduled flights, shortage until 26MAY. Landing permits are now required at least three days prior, and can be obtained via email at cal02@mcttd.gov.ki.

EGLL/London Heathrow will have an emergency exercise on 21MAY. If you see smoke or fire, it's most likely from there.

N90/New York Airports The FAA has withdrawn its proposed slot program which was extremely restrictive to non-scheduled operators. The FAA is withdrawing the **NPRM** to allow for further evaluation of these changes.

KZZZ/United States the FAA has updated it's list of **Critical DME's**. When these critical DME's are not available, it results in navigation service which is not sufficient for DME/DME/IRU operations along all or portions of a specific route or procedure. This is mainly an issue for Non-GPS equipped aircraft.

CYUL/Montreal has added a new International wing to the terminal as of 12MAY. The 65,620-square-foot expansion includes 8,611 square feet of additional retail space and six new boarding gates.

SOOO/Cayenne FIR issued NOTAM A0141/16 advising that due to the SOCA CPDLC system trail, datalink connection may be lost. If unable to communicate by CPDLC then they advise to contact SOOO or SOCA VIA normal HF frequencies until 24JUN.

North Atlantic The London Met Office has issued its **North Atlantic tropical storm seasonal forecast for 2016**.

EZZZ/Europe an annual large scale military exercise called "NATO Tiger Meet 2016" will be held from 16MAY to 27MAY in Spain. NOTAMs LE D1109/16 and D1272/16 have been issued along with a **map** detailing the area.

LOWW/Vienna has introduced 2 new RNP(AR) approaches RNAV (RNP) N RWY 16 and RNAV (RNP) E RWY 16. The Austrian AIS has issued **AIC A 5/16** covering the additions.

LKPR/Prague officials stated that they are working to assess the security at LKPR as they begin to implement the government's security recommendations. The measures, including face recognition technology, should be fully introduced within 12 to 18 months. Security has increased in response to the attacks in Brussels. Heavily armed soldiers continue to patrol LKPR.

Arabian Peninsula on 11MAY the Centre for Disease Control CDC issued an Alert Level 2 for MERS in the Arabian Peninsula.

NZZC/Christchurch FIR has issued NOTAM B2740/16 advising of recent activity for Volcano Mount Ruapehu. No current eruption but concern for increased likelihood of eruption exists.

FHSH/St. Helena has received its certification to begin commercial flight operations. An 1850 meter runway, a 3500 sq m airport terminal and other associated infrastructure, such as access roads, bulk fuel installations, water supplies and aerodrome ground lighting have been installed and are ready for operational use. However – concerns remain about windshear which is currently delaying acceptance of traffic.

HKZZ/Kenya The U.S filed an advisory with IATA stating that Kenyan airspace is unsafe due to a possibility of extremist or militant activity within Kenyan airspace as Al Shabaab has demonstrated the capability and intent to conduct terrorist attacks in Kenya targeting, among others, US/Western interests including aviation interests.

EGPX/Scottish Scottish Control is changing to a new ATC system this week: expect airspace restrictions. ATC advises a fundamental level of change in the method of operation within Scottish Upper Airspace will result. There is no change to the Oceanic Operation, and Domestic CPDLC will be available at all times from 17MAY.

CYMM/Fort McMurray, Canada remains closed due to Forest Fires; only emergency and evacuation flights are allowed.

EHZZ/Amsterdam FIR The Netherlands has revised procedures for obtaining Special Permission for overflying or landing aircraft on delivery, ferry flights, or other circumstances where a normal Certificate of Airworthiness is not in place. Read the article. Questions should be directed to our ferry team at service@fsbureau.org.

View the full International Bulletin 18MAY2016

Midweek Briefing 11MAY: Reykjavik Oceanic Closure, Australia to turn off Nav aids

Cynthia Claros

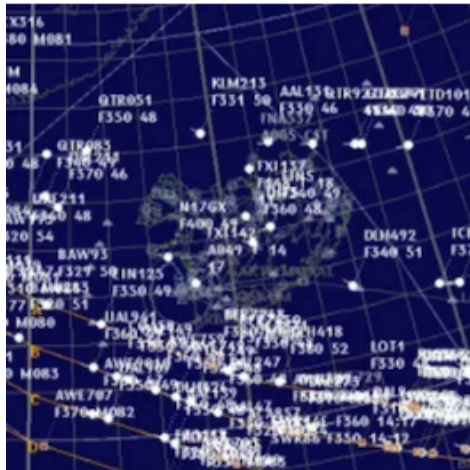
1 June, 2016

**INTERNATIONAL
BULLETIN**

ISSUED BY FLIGHT SERVICE BUREAU

SITA HNLFSXH AKLFSXH AFTN KMCOXAAL

EMAIL INTL.DESK@FSBUREAU.ORG



Reykjavik Oceanic Closure 11MAY Operators planning eastbound flights across the NAT should be aware of a NOTAM issued earlier by Reykjavik Oceanic/Iceland ATC, that essentially asks traffic to avoid the airspace wherever possible, due to further ATC Industrial Action. [Read the article.](#)

Australia to turn off Nav aids 11MAY On 26MAY, Australia will switch off around 180 different VOR's, NDB's, and other ground-based Nav aids. All international operators will be required to have GNSS/GPS as primary navigation. [Read the article.](#)

CYMM/Fort McMurray, Canada is closed due to Forest Fires; only emergency and evacuation flights are allowed.

EGPX/Scottish Expect delays from 17MAY when controllers change to a new ATC system. ATC advises a fundamental level of change in the method of operation within Scottish Upper Airspace will result. There is no change to the Oceanic Operation, and Domestic CPDLC will be available at all times from 17MAY.

KATL/Atlanta closed one of its three security checkpoints in the domestic terminal for three weeks and will reopen 25MAY. They have added additional security lines to the other 2 checkpoints in hopes of reducing the impact. Plan for extra time if you are heading through ATL in the next few weeks.

LGZZ/Greece An update on 09MAY was issued for the slot allocation Rules and Guidelines for all Greek Coordinated Airports. The updated document can be found at GABA report.

YZZZ/Australia CASA has issued clarification as to who is responsible for Terrain Clearance when ATC instructs an aircraft to "resume own navigation". Consistent with ICAO standard, while under radar vectors below the MSA, ATC assumes responsibility for Terrain Clearance. The AIC is worthwhile refresher reading as this applies to most International Ops.

OYRN/Mukalla has reopened after it was recently re-captured by government and Emirati soldiers. It is currently only accepting humanitarian and aid flights.

HKIS/Isiolo is a new airport in Kenya that will be operational in early JUN. The new facility will cater to domestic and international flights and will have annual passenger capacity of 125,000 and a 1400m runway. Isiolo is located near many national reserves, approximately 125 mi/200 km northeast of Nairobi.

BIRD/Reykjavik Oceanic Operators planning eastbound flights across the NAT should be aware of a NOTAM issued earlier by Reykjavik Oceanic/Iceland ATC, that essentially asks traffic to avoid the airspace wherever possible, due to further ATC Industrial Action. Eastbound flights in particular will not be accepted into the airspace unless ... [Read Full Article](#).

LIZZ/Italy Another ATC Industrial Action in Eurore has been announced for 14MAY, this time in Italy and affecting only part of operational personnel. Only some air navigation services may be affected. The following NOTAM has been issued.

EGLL/London Heathrow has been identified as the airport most affected in the UK by laser strike incidents with 121 in 2015, followed by EGBB/Birmingham with 94, EGCC/Manchester recording 93 and EGNM/Leeds Bradford with 77.

SKBO/Bogota has introduced a significant enhancement to the current ATC infrastructure by adding Secondary Surveillance Radar or SSR. The Columbian CAA issued AIC **A07/16** to cover the upgrade. This will help increase the level of safety for operations in SKBO, especially given the terrain in the vicinity.

WZZZ/Indonesia The Visa-Free Program has expanded to Nationals from a total of 169 countries and are now eligible to enter Indonesia without a visa. Although the regulation is silent on the allowable activities under this status, the previous version of the law restricted its use to tourism.

LFPG/Paris The first IFR LPV approach was implemented at LFPG for Runway 26L on 03MAY The new approach mirrors Cat I ILS approach minimums, including a 200-foot decision height, and it is supported by the European Geostationary Navigation Overlay Service (EGNOS).

WSZZ/Singapore has introduced a system called **ATLAS** (Air Transportation License and Administration System), for obtaining the application, renewal and administration of licences and permits for scheduled and non-scheduled air services.

[View the full International Bulletin for 11MAY2016](#)

Midweek Briefing 04MAY: New US CBP Airport, Iceland ATC Strike continues

Cynthia Claros
1 June, 2016

INTERNATIONAL BULLETIN

ISSUED BY FLIGHT SERVICE BUREAU

SITA HNLFSXH AKLFSXH AFTN KMCOXAAL
EMAIL INTL.DESK@FSBUREAU.ORG



New US CBP Airport 04MAY A new US Customs facility opened in KMT/ Marathon on 20APR, to facilitate increased traffic to Cuba. Read the article.

Iceland ATC Strike continues 04MAY Icelandic controllers are in a pay dispute with Isavia, leading to multiple strike actions at BIKF/Keflavik and BIRK/Reykjavik. Last week BIKF was closed overnight at short notice. Read the article.

EHAM/Amsterdam and other Dutch airports will observe a two minute silence on ATC frequencies today, 04MAY, from 1800-1803Z. ATC will arrange traffic flow so that no aircraft will land or taxi during this period, meaning likely delays, albeit for a short period.

SECU/Cuenca, Ecuador remains closed after an E190 slid off the main runway on 29APR, latest estimate is no reopening before 06MAY.

CZZZ/Canada Visa-exempt foreign nationals can enter and exit Canada by air without an Electronic Travel Authorization until 29SEP2016. After that date, these travelers will need to obtain online authorization to visit.

BIZZ/Iceland Multiple ATC Strike actions for BIRK and BIKF are ongoing, check NOTAMS and with handler for latest. **Read article.**

TFFR/Guadeloupe has ongoing main runway closures due to WIP, current shown are 04MAY 0200-1015Z, 17MAY 1000Z- 18MAY 1600Z. Only helicopters will be allowed to operate during these periods.

UIBB/Bratsk has a fuel shortage until 31MAY, non-scheduled movements are by PPR only.

NWWW/Tontouta has an ATC staff shortage and requires slots for arrival until 31MAY, Tel +687 352437. Work on 11/29 is also ongoing, check NOTAMS for any current outages, which will close the airport.

EGGX/Shanwick is trialling transferring westbound flights direct to a HF frequency rather than via an initial VHF frequency, using CPDLC. The default frequencies will be HF 5649 H24, 2872 0000-0900 and 1800-2400, and 8879 0900-2100.

PAZA/Anchorage has published new procedures Eff 28APR for User Preferred Routes within the PAZA FIR,

refer A0075/16.

SVZZ/Venezuela changed timezones on 01MAY to UTC-4. In addition, all public offices, including public ministries, will only operate on Mondays and Tuesdays until further notice.

TTZP/Piarco FIR is trialing ADS-C and CPDLC with ident TTZP until 31MAY. Flights entering the FIR east of 57W should log on 15 minutes prior to the boundary with TTZP.

UHSS/Yuzhno has advised that B777 aircraft are limited to 310T during the summer period.

UIAA/Chita is only available as alternate for one specific airline (Aurora) between 0930-2100Z. Outside these times ops normal.

WSZZ/Singapore has introduced a fingerprint clearance system to verify the thumbprints of arriving and departing travelers ages six and above at select immigration checkpoints. The system will be progressively implemented starting at the manned immigration counters of sea and land checkpoints, followed by air checkpoints until full implementation is completed in the months ahead. Travelers should be prepared for slightly longer immigration clearance times at manned checkpoints, especially during the initial implementation stage of the project.

YZZZ/Australia Border Force employees have been banned from taking industrial action at airports for three months; the threat of ongoing strike action caused much concern for operations in March.

RJTT/Haneda the airport authority has changed the number of slots available for general aviation aircraft. Effective 25APR, slots for GA during the daytime (0600-2259 local) will be increased to 16 total for arrival and departure (from eight in the past). Note that there are no slots restrictions for night time operations (2300-0559 local).

CYVR/Vancouver will have one of its main runways 08R/26L closed nightly between the hours of 05-13Z 08MAY-02SEPT for construction. During the day (13-05Z) the runway will have the ILS on 08R/26L out of service, along with no approach lighting on runway 26L.

SLZZ/Bolivia Certain medications prescribed for personal use are treated as narcotics in Bolivia, with severe penalties for import or export without a valid prescription from a doctor; make sure you carry a letter from a doctor describing the medical condition and any prescribed drugs and that they are in their original containers and clearly labelled.

EBBR/Brussels has partially reopened the departure hall, which has remained closed since 22MAR. 110 Check-in counters will be open in the airport departure hall along with an additional 36 counters that are housed in temporary buildings. The EBBR airport authority expects this will bring the airport up to 80% of capacity.

EZZZ/Europe Bulgaria, Turkey and Romania will begin a project to interface their ATC systems so they can handle a significant build-up of airspace traffic in the Black Sea area. New routes are expected by mid 2016.

LEZZ/Spain The Spanish F1 Grand Prix is being held from 13MAY-15MAY and will bring heavier than normal traffic to LEBL/Barcelona and LEGE/Girona.

HEZZ/Egypt Individual travellers will in the future require a visa before entering Egypt. The exact date of the implementation of this rule is not yet determined. The visa must be applied for from the Egyptian embassy and the consulate generals before departure.

GVZZ/Cape Verde Aviation officials issued a statement announcing that national airports are open and operational. The statement was released following reports that flight operations had been suspended at the country's airports.

ORZZ/Iraq Iran canceled all flights to Baghdad following a breach of the International Area by protesters on 30APR. The demonstrations have caused problems for pilgrimage flights to Baghdad, and those flights will operate instead to ORNI/Najaf.

VIDP/Delhi has opened a new ATC tower (which is the country's tallest at 60 metres). VIDP will also be starting construction on a 4th runway this year and is expected to be completed by 2018 which will increase the airport arrival rate to 105 landings an hour, and will mitigate the common airborne holding.

[View the full International Bulletin for 04MAY 2016](#)

Iceland ATC Strike continues

Cynthia Claros

1 June, 2016



Icelandic Air Traffic Controllers are currently in a pay dispute with airport operator Isavia and service organisation SA-Business Iceland. Controllers are at work, but a ban on all overtime has been in place since 06APR. Last week, two controllers were taken ill and, because of the work-to-rule, no cover could be found.

The result was a shutdown of BIKF/Keflavík International Airport, a regular tech stop and alternate for the NAT, between 9pm and 7am.

Similar closures are currently NOTAMed for BIKF and BIRK in the coming days, notifying multiple further ATC strike actions.

New US CBP facility at Marathon

Cynthia Claros

1 June, 2016



A new US CBP facility facility opened in KMTB/Marathon on 20APR, to facilitate increased traffic to Cuba. The Customs facility is located mid-field at the terminal, on Twy A.

Operating hours are Wednesday – Sunday, 9:00 AM – 5:30 PM with after hours callouts available.

Phone: 305-289-2029

Fax: 305-289-2059

This is a fee based facility (\$50 for all pistons and turbine fee based on aircraft size) which offers a non-towered airport and much less traffic than the larger airports such as TMB and MIA.

From AIN online:

For the first time in approximately three decades, U.S. Customs and Immigration service is now available at the Florida Keys Marathon International Airport, with last week's inauguration of a new 4,200-sq-ft permanent Customs and Border Patrol facility located in the former commercial terminal. In anticipation of the achievement, the airport recently added "International" to its name.

Located midfield on Taxiway Alpha, U.S. Customs is regularly available from 9 a.m. to 5:30 p.m. Wednesday through Sunday, with after-hours callout service available with 24 hours' notice. Cost for the \$1.6 million facility was split equally between the Florida Department of Transportation and the Monroe County Airport Authority, said Thomas Henderson, assistant county airports director and Marathon Airport manager.

According to the Marathon Jet Center, the only FBO that pumps jet-A at the airport, after Customs clearance, pilots can request fuel to be delivered to the aircraft in the Customs area, depending on traffic, a feature that would waive facility fees for turbine-powered aircraft. The general aviation, non-towered airport is open 24/7 and features a 5,000-foot runway.

Midweek Briefing 27APR: Rome Airport Closures, Strike: Germany, France

Cynthia Claros

1 June, 2016

**INTERNATIONAL
BULLETIN**

ISSUED BY FLIGHT SERVICE BUREAU

SITA HNLFSXH AKLFSXH AFTN KMCOXAAL

EMAIL INTL.DESK@FSBUREAU.ORG



Rome Airport Closures 27APR Private flights (any non-commercial traffic) will not be allowed to operate to or from LIRA or LIRF on 30APR and 01MAY, as the result of a Papal Restriction. Refer to Italian NOTAMs for details.

Strike: Germany, France 27APR Widespread, mostly without notice, strike action across Europe today affecting operations for the coming few days. France and Germany worst affected (EDDF, EDDM, EDDK in particular); Lufthansa has cancelled all domestic flights. Monitor Eurocontrol NOP for latest.

KLAX/Los Angeles Due to a runway and taxiway construction project at LAX, arrivals (mostly general aviation) from the north and west can expect to be routed to arrive on the south side of the airport via the LEENA FIVE STAR between 09MAY and 06AUG.

KTPA/Tampa Due to an unforeseen required runway repair, TPA has closed 01R/19L and 10/28 until 09MAY. The airport is operating under single runway ops so you can expect ATC delays until the runway is fixed.

KDEN/Denver has opened a new train line that connects the airport to downtown. Named the 'A Line', it will take passengers to downtown in 37 minutes and cost \$9 USD each way.

MKJS/Montego Bay increased traffic and possible delays into and out of MBJ 27APR-29APR due to the Airports Council International Convention.

SEZZ/Ecuador As of 23APR, 654 people have been killed, 113 people have been rescued alive, 58 people remain missing, and more than 25,000 remain displaced as a result of the 7.8 magnitude earthquake that struck off the coast of Ecuador on 16APR.

LZBB/Bratislava will be introducing free route airspace in their FIR above FL245 on 28APR. All ATS routes have been withdrawn above this flight level.

MTPP/Port au Prince, Haiti On 24APR, approximately 2,000 protesters marched through Port-au-Prince in opposition of the postponement of the runoff elections. While the protest did not turn violent, it severely disrupted traffic in Port-au-Prince, as protesters set up roadblocks of burning tires in the streets

EZZZ/Europe The European Commission has officially offered citizens of Ukraine visa-free travel across Europe.

HEZZ/Egypt UK FCO Advice: there is a heightened threat of terrorist attacks targeting celebrations of Orthodox Easter (24APR-01MAY).

RJFT/Kumamoto has reopened after closing for several days following the Japanese earthquakes. At this point, the airport can only handle arrivals, due to damage the terminal building sustained, which has effected the airports ability to perform security checks and handle luggage.

RZZZ/Japan The Immigration Bureau will be closed 29APR through 05MAY for Golden Week holiday observance. Foreign nationals should expect processing delays for immigration applications filed before or after this period.

ZZZZ/Worldwide On 25APR the World Health Organization (WHO) warned of a likely increase in the upcoming months in worldwide cases of Zika. Experts believe Europe will be next to experience an increase of Zika virus cases due to the approaching summer.

ZSHC/Xiaoshan The airport authority has requested that all private flights arrive with their specific tow-bar on board to mitigate any departure delays. The expectation is in effect until SEP16.

ZKZZ/North Korea At 0930Z on 23APR the North Korean military launched a submarine-based ballistic missile off the Sea of Japan. The missile flew for approximately 16nm before falling into the sea.

VIAR/Amritsar is currently in the process of upgrading the CAT II ILS to a CAT IIIB ILS which will allow CAT III capable aircraft to land in visibility down to 50 meters. Currently the only other city in India that has a CAT III ILS is Delhi.

[View the full International Bulletin for 27APR2016](#)

Earthquakes: Japan & Ecuador, South America - New Timezone: Midweek Briefing 20APR

Cynthia Claros
1 June, 2016

INTERNATIONAL BULLETIN

ISSUED BY FLIGHT SERVICE BUREAU

SITA HNLFSXH AKLFSXH AFTN KMCOXAAL
EMAIL INTL.DESK@FSBUREAU.ORG



Earthquakes: Japan, Ecuador 20APR Two large earthquakes struck Japan and Ecuador in the past week, with a longer term impact on International Flight Ops. RJFT/Kumamoto and SEMT/Manta are both closed UFN. Read full article.

South America - New Timezone 20APR In an unusual move, a new time zone will take effect in South America from the 1st of May. As part of a measure to battle an energy crisis in Venezuela, the entire country will change timezone from UTC -4h30 to UTC-5, to ensure more daylight in the evening when energy consumption peaks. **Read full article.**

EGLL/London Heathrow An A320 was struck by a drone on approach to LHR on 17APR. This is the first incident of its kind, though there have been many close calls to date.

FMZZ/Madagascar Cyclone Fanatala is currently north of Madagascar, the equivalent of a Category 5 Hurricane. It is expected to miss the island nation and the main airport of FMML but the close proximity of the cyclone to the island may cause flight disruptions.

BIKF/Keflavik beginning 01MAY, BIKF will be imposing a new Terminal Navigation Charge. This charge is to be applied to all flights arriving at BIKF. The airport authority has issued an Air Navigation Chargedocument to assist in determining the impact of the new fee.

LTZZ/Turkey. We've been alerted to a change in Overflight Requirements – aircraft with M- and VP-registrations, and any other countries without a bilateral agreement, require an Overflight Permit. See the new Turkey Lowdown for full information.

TIZZ/U.S. Virgin Islands authorities, assisted by the FBI, began investigating reports of a plot to attack airports on the Virgin Islands, notably the Terrance B. Lettsome International Airport (Beef Island Airport). The U.S. Coast Guard first received information of a terrorist attack plot circulating on social media. The threat focused on Terrance B. Lettsome International Airport but also mentioned airports on St. Croix, St. Thomas and St. John as possible targets. No information is available on what level of credibility authorities attach to these threats.

EBBR/Brussels A recent report from the Brussels Airport CEO has stated that EBBR will be 100%

operational by the beginning of June.

EDNY/Friedrichshafen will be hosting the AERO 2016 exhibition from 20APR to 23APR. There is an expected increase in IFR traffic to the airport during the event. Please refer to NOTAM C0933/16 for further details.

LCCC/Nicosia FIR due to a Russian Navy Exercise and rocket test firings in the Mediterranean Sea, there are NOTAM'd route closures for W/UW17 from BALMA-NIKAS, R/UR78 and M/UM978 daily from 0500-1500Z on 21APR and 22APR. The NOTAMS covering the closure are A0308/16 and A0310/16.

SBZZ/Brazil The Canadian government has issued a helpful health notice for crew/passengers planning to travel to Brazil for the upcoming Olympic Games, which has advice on how to contend with the Zika virus.

MGZZ/Guatemala Volcano Santa Maria has had some recent high level ash dispersed into the atmosphere up to FL250. The Washington VAAC provides advisories and forecasts.

ZBAA/Beijing is not available for Non-Emergency diversions or planned as an alternate due to gate/stand shortage daily from 13-23Z daily until 28OCT16.

VIZZ/India The Government of India has introduced the e-TOURIST VISA (eTV) scheme for UK nationals travelling to India. All guests travelling under this scheme must carry a printed copy of the approved eTV for verification at the check-in counter prior to boarding.

WSZZ/Singapore the CAAS has issued 2 AIP supplements outlining the upcoming military exercise Bersama Shield 16. [AIP SUP 40-16](#) covers Kuala Lumpur and Singapore FIR airspace restrictions and AIP SUP 41-16 covers additional Singapore FIR airspace restrictions. The exercise will be running from 21APR to 28APR.

HSZZ/South Sudan The UK FCO has issued a travel warning against travel to South Sudan and in particular to Juba due to the return of the First Vice President as "tensions and disturbances" may increase across the country in the coming weeks.

FNZZ/Angola The CDC has upgraded the yellow fever in Luanda Province to an Alert Level 2. The government of Angola requires all travellers older than 9 months to show proof of yellow fever vaccination on arrival. In addition, CDC recommends that all travellers aged 9 months or older be vaccinated against yellow fever.

DNMM/Lagos a new protocol issued by customs and immigration officials is causing congestion in the arrival hall. There are 2 forms being given to passengers only once they enter the arrival processing area. Please ask your handler if these forms can be provided ahead of time.

View the full International Bulletin for 20APR2016

US, Canada may lose EU visa rights, More Free Route Airspace for Northern Europe

Cynthia Claros
1 June, 2016

INTERNATIONAL BULLETIN

ISSUED BY FLIGHT SERVICE BUREAU

SITA HNLFSXH AKLFSXH AFTN KMCOXAAL
EMAIL INTL.DESK@FSBUREAU.ORG

expect. time	destination	airline
13.25	RHODES	
13.35	MUNICH	
13.40	GENEVE	
13.45	PARIS	
13.55	ROME	
14.00	NAPLES	
14.05	MADRID	
14.15	TUNIS	
14.25	ZURICH	



US and Canada may lose EU visa rights 13APR The European Commission published warning on 12APR that visa-free travel by US and Canadian citizens to Europe is at risk, due to the lack of a full reciprocal arrangement for EU citizens. **Read the full article.**

More Free Route Airspace for Northern Europe 13APR Sweden, Finland, Denmark, Estonia and Latvia will be increasing free route airspace from 23JUN16. This allows operators to utilize User Preferred Routes above FL285. Details of the implementation can be found through the AIC A3/2016 from Sweden.

RKSS/Gimpo is set to open South Korea's first purpose-built FBO next month. It includes a passenger terminal with customs and a large hangar that can accommodate up to eight large jets. The FBO is a partnership between Korea Airport Crop and Avjet Asia.

EBBR/Brussels Controversial ATC Strike occurred without notice yesterday 12APR, restricting traffic at EBBR and in Belgian Airspace. Eurocontrol advises 4 of 6 sectors operational Wednesday 13APR, at this stage no significant further effect likely.

KZZZ/USA New security measures in the U.S. are being enacted in response to the Brussels Airport Bombings. The Senate voted to increase the vetting of airport workers, expand the number of TSA viper teams that sweep through airports unannounced to stop and search suspicious people, and double the number of TSA's bomb-sniffing dogs. Also, local law enforcement may also conduct random checks of cars and taxis heading towards the airport.

KZZZ/USA the FAA has provided its NextGEN update for 2016. It highlights all the completed items along with the expected achievements for the year. You can find all the info through the NextGEN website.

EZZZ/Europe as of 05APR Eurocontrol as been publishing Target Time information together with Calculated Take-off time (CTOT) in the Slot Allocation and Slot Revisions Messages (SAM and SRM). The purpose of the initiative is to provide flight crew with operational awareness of their flight's planned time at the congestion point in the air, rather than solely providing the corresponding delayed departure time (CTOT) to implement ATFM measures.

EGZZ/United Kingdom A large scale military exercise named 'Joint Warrior 16-1' has been taking place

since 09APR16 and will last until 22APR06. EGPX and EGTT FIR/UIRs are affected. However, low to medium impact on airline operations is expected.

LFZZ/France beginning 03MAY16 France will be implementing CPDLC services within LFFF, LFEE, LFRR, LFMM and LFBB FIR's. The full details of the IOC can be found in AIC 10/16.

EGGX/Shanwick OCA implemented a trail of 5 minute separation minimum between aircraft which are following the same track, irrespective of whether they are East or Westbound. Full details can be found through AIC Y 022/2016.

LOWW/Vienna every weekend until 24MAY16 LOWW will be operating under single runway ops beginning 2100 on the Friday until 1600 on the Sunday. The closures are weather dependent and the closure will be recalled if the forecast calls for the use of runway 11/29. In any single runway scenario use at Vienna delays are a guarantee.

OEZZ/Saudi Arabia The U.S. State department updated a travel warning to Saudi Arabia on 11APR16. It outlines the risk to travellers due to an increased risk with the threat of terrorism.

SKZZ/Colombia The U.S. State department has updated the travel warning to Colombia. They have actually improved the travel warning as the security in the country has improved significantly in recent years. Foreigners should still exercise caution though.

LTCC/Diyarbakir is now able to handle international flights due to a new terminal building that has opened.

OLBA/Beirut two airport employees were detained on suspicion of terrorist activity involvement on 08APR16. Traces of explosives and a handgun were found on the two individuals.

DIAP/Cote D'Ivoire has reduced the passenger departure tax by 50% and have also removed the solidarity contribution tax levied on airline tickets.

GABS/Mali began renovations last month (MAR16) to increase the airports capacity to handle 1.5 million passengers which is up from the 800,000 annual passenger traffic. The project is expected to be completed by the end of the year.

View the full International Bulletin for 13APR2016

MHTG 'Interesting Approaches' to end, Greeks or Italians? ATC strikes:

Cynthia Claros
1 June, 2016

INTERNATIONAL BULLETIN

ISSUED BY FLIGHT SERVICE BUREAU

SITA HNLFSXH AKLFSXH AFTN KMCXAAL
EMAIL INTL.DESK@FSBUREAU.ORG



MHTG 'Interesting Approaches' to end 06APR MHTG/Tegucigalpa Dangerous approaches at MHTG will be consigned to history, as a new airport was finally confirmed at the weekend by the Honduran government. **Read the full article.**

Greeks or Italians? ATC strikes this week 06APR There will be an ATC strike this week in Europe, maybe by Greece, maybe by Italy, maybe by both. These strikes are often cancelled shortly before starting, but at this pre-planning stage, it seems likely to go ahead. Read the full article.

EBBR/Brussels has now reopened but operations are still very restricted. The airport is not expected to be fully operational until June or July by current estimates. The airport authority has instituted new security measures that include a requirement for passengers to arrive 3 hours prior to their departure time. The terminal is still closed to busses and trains. Slots must still be requested from the Brussels Airport Authority if you intend to operate in or out of EBBR.

ZKPY/Pyongyang FIR Many reports that North Korea is jamming GPS signals, also reported by South Korea RKRR NOTAM A0450/16. Signals have been reported as unreliable or lost when operating in or near to North Korean airspace. Exercise caution if you rely on GPS in those areas. Read our DPRK Overflight Risk article from a few weeks ago.

LIZZ/Italy Eurocontrol has confirmed an Italian ATC strike is set for April 9th. NOTAMS A2062/16A2 and A2063/16A2 have been issued covering the proposed strike.

MHTG/Tegucigalpa Dangerous approaches at MHTG will be consigned to history, as a new airport was finally confirmed at the weekend by the Honduran government. Full article here.

LFXX/France an Operational Trial of CPDLC Services in French Airspace of Reims (LFEE), Paris (LFFF) and Marseille (LFMM) ACC will be in effect from 05APR to 11APR.

EZZZ/Europe The U.S. State Department along with numerous other countries have issued a Europe wide travel warning in response to the attack in Brussels. While extra vigilance should be exercised it is also a

very generic response to a threat that has yet to be fully understood from a commercial aviation perspective. If you would like to be kept up to date on specific travel alerts from the U.S. State Department you can sign up through their STEP program.

EHAM/Amsterdam reports of near misses with drones have recently been reported by crews. The location of the near misses was on the approach path but no specific runway was mentioned.

KEWR/Newark The FAA will be increasing the number of available slots to EWR, available at the end of October. The change is in response to the improved efficiency of the airport and the ability to increase the ATC arrival rate.

FAA/United States has issued Advisory Circular 00-30C. It describes the various types of CAT (Clear Air Turbulence) along with avoidance techniques and possible future forecast systems for helping Dispatchers and Pilots in the planning stages.

KZZZ/USA Check your passport! Effective 01APR16, if you're travelling to the United States under the Visa Waiver Program, you will also need to have a valid **e-Passport** along with your ESTA.

CZVR/Vancouver ACC will begin to use ADS-C on 18APR In their Oceanic sectors, for both alerting service (SAR) and improved ATC separation purposes.

UDDD/Yerevan FIR Due to Air Defence activity ATC route segments with Yerevan FIR Crossing FIR boundary points MATAL, ELSIV, PEMAN and VETEN between Yerevan FIR and Baku FIR are not available.

UBBA/Baku FIR Entry/Exit points VETEN, PEMAN, ELSIV, MATAL are closed.
Baku FIR Entry/Exit points BARAD, DISKA closed from GND to FL305.
NOTAMS A0030/16 and A0032/16 have been issued as well.

UHSS/Yuzhno will be closed daily 10APR-14MAY between the hours of 12-21Z.

OMZZ/United Arab Emirates will begin charging a \$9.50 USD Passenger Tax effective 30JUN, to be imposed on all travellers over the age of 2 through all airports including those only transiting the UAE. A driving factor in this new charge appears to be low oil prices affecting the Gulf States.

UZZZ/Russia has stated that aviation authorities are intensifying its ramp inspections of all aircraft (especially foreign aircraft, we guess) in the wake of the Rostov accident.

FZZZ/Nigeria The Nigerian National Petroleum Corporation has stated that steps are currently being taken to end the countries fuel shortage, but may take upwards of 2 months. We suggest to check with local handlers for the availability aviation fuel supply until the issue is resolved.

VNKT/Kathmandu We have received some reports that VNKT ATC weather reports are inaccurate, especially regarding visibility. Any feedback please let us know.

VIAR/Amritsar has suspended all night operations for 1 year due to the planned reconstruction of the airports runways.

View the full International Bulletin for 06APR2016

Pavlof Eruption wreaking havoc, Brussels Airport remains closed: Midweek Briefing

30MAR

Cynthia Claros

1 June, 2016

INTERNATIONAL BULLETIN	ISSUED BY FLIGHT SERVICE BUREAU
	SITA HNLFSXH AKLFSXH AFTN KMCXAAL EMAIL INTL.DESK@FSBUREAU.ORG



Pavlof Eruption wreaking havoc 30MAR16 Volcano Pavlof erupted on Sunday and is currently on aviation colour code 'RED'. It has caused havoc for North Pacific, Alaskan and Northern Canadian operations. The latest predictions have the ash upwards of FL400 and extending over Northern Alaska and Canada. You can find the latest information through the Alaskan VAAC.

Brussels Airport remains closed 30MAR16 EBBR is still closed with the possibility of opening later this week. Currently all commercial flights are still prohibited from operating into EBBR. Only ferry, emergency, SAR, State, general aviation and cargo flights are authorized with a slot that can be coordinated through the Belgium Slot Coordination website.

EZZZ/Europe The U.S. State Department along with numerous other countries have issued a Europe wide travel warning in response to the attack in Brussels. While extra vigilance should be exercised it is also a very generic response to a threat that has yet to fully understood from a commercial aviation perspective. If you would like to be kept up to date on specific travel alerts from the U.S. State Department you can sign up through their STEP program.

FAA/United States there have been 583 reported hazards from Aug 22/2015-Jan 31/2015 between aircraft and Drones. None of these incidents have caused any collisions or damage but extra vigilance must be exercised until the FAA can regulate the use of these drones in the terminal areas.

RPHI/Manila has issued an advisory for aircraft operating in the vicinity of the Bulusan Volcano and the Kanlaon Volcano due to an alert level 1 of activity. Flights operating in the vicinity are advised to avoid

flying close to the summit.

LXXX/France a general strike has been declared for March 31st. Possible impact to airline operations. Please make sure you check with Eurocontrol or FIR NOTAMs for further restrictions.

FXXX/Nigeria The NNPC or Nigerian National Petroleum Corporation has stated that steps are currently being taken to end the countries fuel shortage but may take upwards up 2 months. Please check with local handlers for the availability aviation fuel supply until the issue is resolved.

LXXX/Turkey has issued a nationwide terror alert and the Israeli Counter-Terrorism Bureau has advised for all of it's citizens to leave the country. Extra vigilance should be exercised if operating to and from Turkey for the foreseeable future.

UXXX/Russia has stated that aviation authorities are intensifying it's inspections of aircraft from Russian and International budget carriers in wake of the Rostov-on-Don accident.

DGAC/Ghana FIR issued NOTAM A0128/16 due to VHF freq 130.9 being not reliable for all Oceanic traffic entering ACCRA FIR from the South East due to maintenance. All traffic must contact ACCRA on HF 8903KHZ or logon to ADS-C/CPDC "DGAC" until positive VHF contact is established.

VNKT/Katmandu There have been a few reports that the Tower at VNKT has been reporting erroneous weather to pilots. One example of such a report was "Tower informed us that there was some 3 km of visibility this morning but it to be less than 1.5 km while Kathmandu was engulfed by haze". If you encounter any issues while operating into VNKT please send us a note to bulletins@fsbureau.org.

VIAR/Amritsar has suspended all night operations for 1 year due to the planned reconstruction of the airports runways.

VTBD/Bangkok Officials approved an expansion that will allow for more aircraft, passengers and vehicle parking. The plan also includes provisions to cut landing fees during off-peak hours at VTBD and VTBS in an effort to increase usage of both airports. The project includes plans to extend the runway, add office buildings, and create additional parking zones for aircraft. The expansion is expected to be completed in 2025.

Angola The Ministry of Health in Angola has reported an ongoing outbreak of yellow fever in Luanda Province. The government of Angola requires all travelers older than 9 months to show proof of yellow fever vaccination on arrival. The CDC has a 'Watch Level 1, Practice Usual Precautions' advisory in place.

FAA/United States has issued Advisory Circular 00-30C. It describes the various types of CAT (Clear Air Turbulence) along with avoidance techniques and possible future forecast systems for helping Dispatchers and Pilots in the planning stages for proactive flight planning.

View the full International Bulletin for 30MAR2016

Midweek Briefing: High Seas Airspace, Canada New Entry Rules

Cynthia Claros
1 June, 2016



High Seas Airspace - near misses 16MAR The Baltic Sea (Scandinavia) is seeing an alarming rise in traffic proximity events, and ICAO has issued guidance to operators with background and information. Military flights operating under 'due regard' are, well - not. **Read the full article** about High Seas airspace.

Canada New Entry Rules - relaxed 16MAR The new Canada Entry Rules - requiring most visitors to have an eTA before departing - came into force yesterday; with a caveat. In short: you should have one, but it's OK if you don't - at least until September 2016. **Read the full article.**

Cxxx/Canada The new Canada Entry Rules - requiring most visitors to have an eTA before departing - came into force on 15MAR; with a caveat. In short: you should have one, but it's OK if you don't - at least until September 2016. Read the full article.

Cxxx/Canada Effective 30MAR, Canadian rules will no longer require an approach completely independent of GNSS at the planned destination. However, where a GNSS approach is planned at both the destination and the alternate, the aerodromes will need to be separated by a minimum of 100 NM. Refer AIC5/16.

Baltic Sea Based on several concrete examples of missing flight plans, the Russian Federation, Finland and Estonia agreed to define 7 new waypoints for State aircraft operations over the High Seas that could be used, to replace the current string of LAT/LONG coordinates, to facilitate all future FPLs between St. Petersburg FIR and Kaliningrad FIR. The ICAO Secretariat assigned the following 5LNCs: PISIS-PIDINPISIM-PIRUX-PINIX-PIVAX-PIPOM. All involved States (Russian Federation, Estonia, Finland and Latvia) agreed to implement/publish these waypoints (all over the High Seas), for the 30 MAR 2016 AIRAC date. Read the High Seas Airspace article.

North Atlantic CPDLC and ADS-C services will be out of service in Gander, Shanwick, Shannon and Reykjavik FIRS on 21MAR for periods lasting no longer than a few hours due to Inmarsat satellite replacement work. Please check the FIR NOTAM's that pertain to your operation that day.

Kxxx/United States Due to a missile launch from within Miami Airspace the FAA has issued NOTAM

A0366/16 to advise of the potential impact to operations with KZMA, KZWY and TJSJ FIRs from March 16 to March 17th. Please check the NOTAM for full details on all the possible routing constraints.

LTXX/Turkey NATO has begun surveillance within the Turkish FIR as part of assurance measures for Turkey. The first duty period was 12-15MAR.

Time Changes Clocks go forward/back depending on whether you've just had a long winter or a long summer. The US changed on 13MAR, most of Europe is on 27MAR, Australia and NZ on 03APR. TimeandDate.com has a very useful list.

KTEB/Teterboro A new Charted Quiet Visual Runway 19 visual approach will be published on 31MAR. Starting 04APR, the FAA will test the procedure for 180 days to gauge pilot compliance and environmental impact to determine if the procedure will become permanent.

YMML/Melbourne will host the Formula 1 Grand Prix 17-20MAR, with additional traffic to both YMML and YMEN/Essendon during these dates.

KATL/Atlanta Officials in Atlanta are laying the groundwork for an expansion of the world's busiest airport. Work will begin soon on a \$6 billion expansion and renovation project at Hartsfield-Jackson Atlanta International Airport. Workers will update the domestic passenger terminal and concourses, and add a sixth runway and a hotel. Work begins on concourse renovations later this year.

Lxxx/Austria has issued AIC 4/16 outlining the near future use of more direct Free Route Airspace.

Oxxx/Iran The U.S. State Dept issued a Travel Warning to reiterate and highlight the risk of arrest and detention of U.S. citizens, particularly dual national Iranian-Americans, in Iran, and to note that FAA has advised U.S. civil aviation to exercise caution when flying into, out of, within, or over the airspace over Iran.

NVVV/Port Vila Runway 11/29 will be closed from 16MAR at 1300Z until 17MAR at 1930Z for maintenance. This essentially closes the airport during the time period.

Yxxx/Australia A reminder that Easter travel could be severely disrupted with Border Force and Immigration staff at international airports across Australia planning to take strike action on the eve of Good Friday.

UIBB/Bratsk Don't go. No fuel. Until 31MAR.

[View the full International Bulletin 16MAR2016](#)

Midweek Briefing: Australia Airport Workers Strike, ICAO Toughens Aircraft Tracking

Cynthia Claros
1 June, 2016

INTERNATIONAL BULLETIN

ISSUED BY FLIGHT SERVICE BUREAU

SITA HNLFSXH AKLFSXH AFTN KMCOXAAL
EMAIL INTL.DESK@FSBUREAU.ORG



Australia Airport Workers Strike 09MAR The Community and Public Sector Union (CSPU) announced the possibility of a strike during the week of 21 March, as well as three weeks of rolling airport strikes by Border Force and Immigration Department staff at international airports across the country. Airport staff members are expected to begin a work stoppage on 24 March, to coincide with the Easter holiday weekend, and will walk off the job at airports, freight terminals and other related sites. The work stoppages will be held to protest wage freezes and work conditions. Further details are likely to emerge closer to the strike.

ICAO Toughens Aircraft Tracking while in distress 02MAR The ICAO has announced new requirements for the real-time tracking of civilian aircraft in distress, following the disappearance of Malaysia Airlines flight MH370 two years ago. The ICAO's governing council approved proposals for planes to carry tracking devices that can transmit their location at least once a minute in cases of distress. Aircraft operators will have to ensure their flight recorder data is recoverable, while the duration of cockpit voice recordings is being extended to 25 hours, ICAO said in a news release. These changes will take effect between now and 2021.

United States Visa Waiver Program Passport Requirements Take Effect April 1. Visa Waiver Program (VWP) travelers must present an e-Passport containing a biometric chip in order to enter the United States visa-free after March 31, 2016. VWP travelers who do not hold an e-Passport should apply for a new passport as soon as possible to ensure that they can continue to use the program without interruption. The e-Passport requirement applies only to VWP travelers; it does not affect holders of U.S. visas.

Canada Electronic Travel Authorization Deadline Relaxed It has been announced that visa-exempt nationals who plan to enter or exit and re-enter Canada by air will be able to board their flight without an Electronic Travel Authorization (eTA) from March 15, 2016 until fall 2016.

India has extended its e-Tourist Visa program to applicants from 37 additional countries. Also, the visa-on-arrival program for certain Japanese nationals who are unable to apply for a regular or electronic visa has been relaxed to allow multiple visits per calendar year. Lastly, the deadline for Person of Indian Origin card holders to apply for the Overseas Citizen of India card in lieu of Person of Indian Origin card has been extended until June 30, 2016.

Ecuador The Ecuador's Geophysical Institute reported that the Tungurahua volcano has experienced a series of eruptions. Pyroclastic flows and fallen ash have collected near the crater. During past eruptions, the volcano's clouds of ash have disrupted flights to major airports in the region.

KZWW/New York Oceanic has issued NOTAM A0105/16 advising restrictions to routings in the WATRS PLUS area due to the (QVR) Oceana Radar being U/S on March 9th and March 10th between the hours of 14-22Z. The restrictions are issued as follows:

Northbound: L453 will be closed.

Southbound: M201 will be clsd btn int atugi and hanri.

Only aircraft equipped with operational ADS-260B out may use the following routes:

Southbound: L453 between LEXAD and ONGOT

North-eastbound: M201 between HANRI and ATUGI

All ADS-260B out aircraft must file an icao flight plan.

UIBB/Bratsk issued a NOTAM restricting the arrivals to only scheduled services due a fuel shortage until March 31st.

PKMJ/Majuro (Marshall Islands) Monthly tanker replenishment is planned for Mar 21-25. During this time, fuel will not be available.

VTSP/Phuket, Thailand has issued a NOTAM advising that the parking of private aircraft is prohibited overnight until April 25th.

Nigeria has experienced a country wide fuel shortage. Please check with your handler ahead of time to ensure fuel is available. Tankering is highly recommended until further notice.

LCCC FIR/Nicosia FIR Late notification of a military exercise in LCCC ACC starting on 09/03/2016 0300 UTC until 11/03/2016 1000 UTC. Exercise areas and route closures announced by following NOTAMs:

A0191/16 through A0196/16, A0208/16 and A0209/16 for area specifications. A0215/16 through A0220/16 for the route closures.

Please see the following graphic outlining the area:



[View the full International Bulletin 09MAR2016](#)

Midweek Briefing:EU Border Controls Expanded, New NAT Plotting Chart published

Cynthia Claros
1 June, 2016

INTERNATIONAL BULLETIN

ISSUED BY FLIGHT SERVICE BUREAU

SITA HNLFSXH AKLFSXH AFTN KMCOXAAL

EMAIL INTL.DESK@FSBUREAU.ORG



EU Border Controls expanded 02MAR Travellers and crews operating to Denmark, Belgium and other EU countries will need to present travel documents to enter from another Schengen country. The security checks will likely cause travel delays for EU and non-EU travellers into the Schengen area.

New NAT Plotting Chart published 02MAR With the multitude of changes on the North Atlantic in the last few months, including new Tracks, end of MNPS, new HLA, RNP4 – we have published an **updated and revised Plotting Chart** for the NAT region, showing all new requirements and with updated Airport and Fuel pricing. It's effective 03MAR.

VOXX/India has expanded its e-Tourist Visa (eTV) program to applicants from 37 additional countries. Eligible visitors under the eTV include business visitors and those traveling to sightsee, visit friends or relatives or to make short medical visits. Nationals from a total of 150 countries are now eligible for the program.

EXXX/Europe Due to the introduction and continuation of border controls in the European Union, travellers to Denmark, Belgium and other EU countries will need to present travel documents to enter from another Schengen country. The security checks will likely cause travel delays for EU and non-EU travellers into the Schengen area. Belgium has instituted border controls at its borders with France. The security checks will remain in place until at least 23MAR.

KTEB/Teterboro will close 0500-1700Z (12 hour closure) this weekend – from midnight Saturday until noon Sunday. This closure is necessary to install new, mandatory hold short signs on Runway 19, which will close the runway intersection. Helicopter operations will be permitted during the closure.

HKXX/Kenya A visa on arrival is now available again at Nairobi, reversing the previous procedure established last year forcing all visitors to obtain one prior to flying. Online visas are still available. <http://evisa.go.ke/evisa.html>

NFXX/Fiji As of 25FEB, there are 42 confirmed deaths in Fiji due to the damage caused by Cyclone Winston, which made landfall over the 20-21 February weekend. Approximately 35,000 people are

sheltering in evacuation centers. There has been little to no contact with remote islands; therefore, the number of casualties and people displaced is likely much higher. Concern about the outbreak of mosquito-borne viruses, such as Zika and dengue fever.

WAXX/Indonesia Australian DFAT updated its travel advice for Indonesia, which reads: “We advise you to exercise a high degree of caution in Indonesia, including Jakarta, Bali and Lombok, due to the high threat of terrorist attack. We continue to receive information that indicates that terrorists may be planning attacks in Indonesia”

SKXX/Colombia is introducing ADS-B, with associated new phraseologies that crew should be aware of. ATC may ask “Notify capacity ADS-B”; response “ADS-B transmitter”, “ADS-B Receiver”, or “Negative ADS-B”. Full AIC.

LOWW/Vienna has a couple of new RNP AR (Authorisation Required) approaches to RWY 16 and 34 on test.

LIXX/Italy is joining the Free Route Airspace (FRA) bandwagon, airspace trial this coming weekend 05-07MAR at FL370 and above in Roma, Milano, Padova and Brindisi ACC, and Malta ACC.

UKXX/Ukraine Did you know that there was reduced horizontal separation in Ukraine airspace (RHSM)? Neither did we. Check out AIC 02/16.

UIBB/Bratsk has fuel supply issues again, current shortage until 31MAR.

View the full International Bulletin 02MAR2016

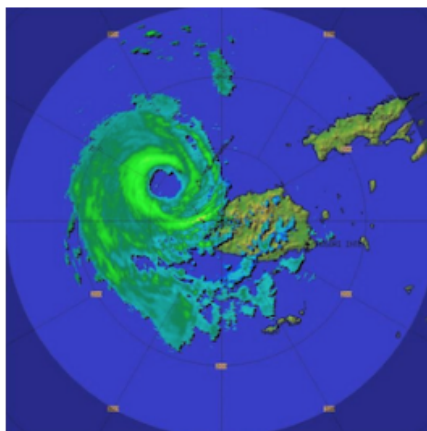
Midweek Briefing: New Wake Turbulence Categories, Fiji Cyclone Winston

Cynthia Claros
1 June, 2016

INTERNATIONAL BULLETIN

ISSUED BY FLIGHT SERVICE BUREAU

SITA HNLFSXH AKLFSXH AFTN KMCOXAAL
EMAIL INTL.DESK@FSBUREAU.ORG



New Wake Turbulence Categories 24FEB New Wake Turbulence Categories will begin a slow introduction in Europe on 22MAR at Paris Airports LFPG/De Gaulle and LFPB/Le Bourget, where the current four (Light, Medium, Heavy, Super) will become six. Those six new categories are Light, Medium (with Lower and Upper), and Heavy (with Lower, Upper and Super). Read the full article ...

Fiji Cyclone Winston 24FEB Fiji sustained widespread damage throughout the Islands on 21FEB from Tropical Cyclone Winston; most airports are open and operating again, including all international airports (NFFN/Nadi, NFNA/Suva). The following domestic airports are also open: Kadavu, Labasa, Rotuma, Labasa, Rotuma, Gau, Kadavu. NFNA/Suva has no overnight parking available at present due to congestion caused by the Relief effort.

NFFN/Nadi, Fiji Hit by Tropical Cyclone Winston on 21FEB, while there is widespread damage throughout the Islands, most airports are open and operating again, including all international airports (NFFN/Nadi, NFNA/Suva). The following domestic airports are also open: Kadavu, Labasa, Rotuma, Labasa, Rotuma, Gau, Kadavu. Note that NFNA/Suva has no overnight parking available at present due to congestion caused by the Relief effort.

KAGS/Augusta, USA Special Procedures in place 07-10APR for US Masters Golf Tournament.

EXXX/Europe New Wake Turbulence Categories will begin a slow introduction in Europe on 22MAR at Paris Airports LFPG/De Gaulle and LFPB/Le Bourget, where the current four (Light, Medium, Heavy, Super) will become six. Those six new categories are Light, Medium (with Lower and Upper), and Heavy (with Lower, Upper and Super). The rules are part of the RECAT-EU project, with the intention of squeezing more traffic into busy European Airports by applying more precise turbulence separation rules. The separation minima are determined specific to each Aircraft Pair. For example, at the moment, an A330 following a B777 (Heavy behind heavy) requires 4 miles in trail. With the new rules, that is reduced to 3nm. An A320 can now follow 4 miles behind a B777, instead of the current 5nm. There are no Flight Planning Changes (continue to use /L,M,H,J for the ICAO Category). For crews, you'll notice the smaller separation, but there are no changes to callsigns or pilot obligations - for now. Read full article.

DRRR/Niamey FIR Air Traffic Control 48HR strike 24 and 25FEB. The ASECNA Contingency plan is

activated, with ATC provided by neighbouring ACC's Dakar and N'Djamena.

LTXX/Turkey We have received several reports that Overflight Permits, which were removed as a general requirement for non-scheduled flights in 2015, are being requested by Turkey for Business Aviation aircraft, specifically M- and VP- registrations. Reports welcomed to clarify to bulletin@fsbureau.org.

RCTP/Taipei Airport works on several parking positions may create availability issues from 04MAR-04APR especially for Airbridge gates. Check with handler.

LFPB/Paris Le Bourget Due WIP airport will be closed during 10 nights from 15FEB to 26FEB, every night from 2045 to 0500Z. No Medevac flights will be possible.

EPKK/Krakow Runway 07/25 is closed daily 2330-0430 until 03MAR.

UXXX/Simferopol FIR EASA published an updated SIB 2015/16 regarding the use of Simferopol FIR on 17FEB. The key change is the phased reintroduction of the use of Simferopol FIR for international transit traffic, on the basis of an evaluation of the high seas portion of the airspace (ie. outside the 12nm territorial limit of the Crimean Peninsula). This airspace provides routes UL851 and UM856 (Odesa South Sector), which since 17FEB are suggested by EASA for use by overflying traffic.

YMML/Melbourne will host the Formula 1 Grand Prix 17-20MAR, with additional traffic to both YMML and YMEN/Essendon during these dates.

EHAM/Amsterdam has changed the callsign of Schiphol Start-up to "Schiphol Planner".

OYAA/Aden, Yemen Airport closed and all flights cancelled since 21FEB due to security concerns.

NVNV/Port Vila On 17FEB local officials signed an agreement with a private contractor to begin repairing the runway. Several airlines suspended flights on 23JAN due to safety concerns with the airport's runway. Aviation officials stated that the renovations should begin in March.

[View the full International Bulletin 24FEB2016](#)

Midweek Briefing: Residual Disinsection for Italy, New Moscow Airport

Cynthia Claros
1 June, 2016

INTERNATIONAL BULLETIN

ISSUED BY FLIGHT SERVICE BUREAU

SITA HNLFSXH AKLFSXH AFTN KMCOXAAL

EMAIL INTL.DESK@FSBUREAU.ORG



Italy now requiring Residual Disinsection 17FEB In light of the spreading global coverage of Zika Virus cases, countries are rapidly changing rules related to Quarantine and Health. Italy is now requiring residual aircraft disinsection for every aircraft coming from any area, not only Zika affected ones.

Moscow Ramenskoye opens to civil traffic 17FEB UUBW/Moscow Ramenskoye, which previously served as a military airfield, is scheduled to open to civil traffic as an International Airport on 16MAR, becoming the fourth Moscow Airport. **Read more ...**

UUBW/Moscow Ramenskoye, which previously served as a military airfield, is scheduled to open to civilians as an International Airport on 15MAR2016. The airport will be Moscow's fourth largest and is expected to serve approximately 1.9 million passengers per year. Russian Railways is planning on constructing a direct rail link between the facility and Moscow. Read the full article.

Worldwide As the mosquito-borne Zika virus spreads worldwide, some health and aviation authorities have begun targeting business aircraft to be treated with insecticide – similar to requirements that have been in place for commercial aircraft arriving from certain points of origin. The most prominent to date is Italy, which has reported several recent cases of the Zika virus affecting people who returned from trips to South America and the Caribbean. A "Certificate of Residual Disinsection" is now required for all aircraft operating in Italy, following recommended WHO and International Civil Aviation Organization Annex 9 procedures. Italy had originally limited the certificate requirement to aircraft arriving from Zika-affected countries, but "within 36 hours that changed" to all countries. Authorities in Costa Rica are requiring that aircraft arriving from affected countries be sprayed on arrival – with crew, passengers and luggage aboard – with an insecticide provided by the local agriculture department.

UADD/Taraz, Kazakhstan has been upgraded to RFF/Rescue Fire CAT9, and with regular international flights starting in June, should have customs available. Maybe become a useful Central Asian en-route

alternate.

UKLV/Lviv FIR, Ukraine A new Notam (A0193/16) is issued to extend the ban in Ukrainian Airspace of any aircraft operator registered in the Russian Federation until 09MAY.

NWWW/Noumea has multiple runway (and therefore airport) closures until 25FEB, check Notams carefully if operating.

NZAA/Auckland Work is currently in progress on the threshold of RWY 23L with the threshold inset 2,270m. The information is contained within AIP updates and not via NOTAM. Operators should note there is are no ILS approaches available at Auckland until 30MAR. While weather is usually very good during February and March operators can expect delays in poor wx.

NZQN/Queenstown is closed from 1800 each day until 31MAR for runway widening works.

AYPY/Port Moresby Telecoms outage continues. To contact ATC Centre use (675) 325 8704 instead of published numbers. Multiple VHF freqs out of service, use HF 5565 as alternate.

RPHI/Manila has a radar outage on 18-19FEB meaning procedural control will affect the Luzon island area within the FIR, 10/15 minute enroute separation as standard.

Somalia A local terrorist organisation claimed responsibility for the bombing of a Daallo Airlines passenger aircraft on 02FEB shortly after it took off from Mogadishu's Aden Adde International Airport (HCMM/MGO). The bombing forced the Airbus A321-111 to make an emergency landing at Mogadishu's airport.

South Africa Refurbishment will affect Johannesburg's OR Tambo International Airport (FAOR/JNB) beginning 13FEB when security and immigration will move from Terminal A to the Central Terminal. Slow processing expected until end March.

US and Cuba advance Air Service agreement US officials will travel to Havana to officially sign the agreement that will make the two countries a step closer for its first commercial flights. Once the US-Cuba air travel pact that was agreed upon on 16DEC2015 will be finalized, airlines will have about two weeks to submit applications for US-Cuba routes with the US Department of Transport and get approval from Cuban authorities to obtain space at Cuban airports. Industry experts expect that the first Cuba-bound flights will be in the air sometime in 2016.

View the full International Bulletin 17FEB2016

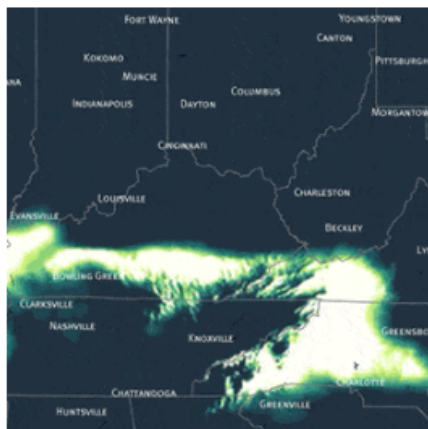
Midweek Briefing: New Canada Entry Rules, Winter Storms clear Newfoundland

Cynthia Claros
1 June, 2016

INTERNATIONAL BULLETIN

ISSUED BY FLIGHT SERVICE BUREAU

SITA HNLFSXH AKLFSXH AFTN KMCOXAAL
EMAIL INTL.DESK@FSBUREAU.ORG



New Canada Entry Rules 10FEB CXXX/Canada Starting 15 MAR 2016, visa-exempt foreign nationals who fly to or transit through Canada will need an Electronic Travel Authorization (eTA). Exceptions include U.S. citizens and travellers with an existing visa, and commercial aircrew. **Read more ...**

Winter Storms clear Newfoundland 10FEB Nova Scotia and Newfoundland (CYQX, CYHZ, CYYT) have two severe Winter Storms passing through this week; Halifax will see up to 40cm of snow, affecting diversion choices on the North Atlantic. **The visualisation above** shows the US Winter storm at the end of January.

MKJK/Kingston FIR Jamaica, has ongoing issues with radar coverage and serviceability, leading to ad-hoc flow management procedures including 15 minute en-route separation, and 10 minute arrival separation at international airports. Latest update indicates this will continue throughout February. We have had several reports from international airlines of delays averaging around 1 hour on departure. Further reports welcome to bulletin@fsbureau.org.

SKED/Bogota ACC, Colombia is applying 20 minute spacing for northbound flights heading into Jamaican airspace due to the increasing delays there.

SPIM/Lima FIR Peru have published new Aircraft Interception procedures for Civil Aircraft. Probably worth a look – although, we must warn you, they are in Spanish only, and exceptionally lengthy. Maybe just double check that overflight permit and keep in touch with ATC instead.

North Atlantic As mentioned last week, effective 04FEB MNPS Airspace is replaced by HLA/High Level Airspace on the North Atlantic. A popular topic. RNP4 or RNP10 now required. Read our International Ops Notice 01/2016 or our blog post: Did you know MNPS is over?

NVVV/Port Vila, Vanuatu Several airlines have suspended operations here effective 01FEB16 over concerns as to the condition of the runway. Airport remains open without restriction.

PACD/Cold Bay has no Jet A1 Fuel available until 29FEB

HRYP/Kigali's runway is closed on a nightly basis from 0200-0700 local time (0000-0500 UTC) until 31MAR for repairs.

North Korea launched a long range rocket at 0031Z on 07FEB. According to preliminary reports, the rocket passed over the Japanese island of Okinawa and landed in the Pacific Ocean. US military officials stated that the rocket did not pose a threat to the United States or allies in the region. South Korean media reported that North Korea is preparing for another nuclear test and has the technology necessary for an inter-continental ballistic missile (ICBM).

AYPY/Port Moresby has a number of common VHF frequencies out of service because of a Telecomms fault. ATC advise to call them on HF HF 5565, 8861, 6622, or 8837, if able.

View the full International Bulletin 10FEB2016

Midweek Briefing: Chinese Airport Delays, Eurocontrol NOP Changes

Cynthia Claros
1 June, 2016



Chinese Airport Delays 03FEB ZXXX/China This is the busiest travel week of the year in China, with millions travelling for the Chinese New Year on 08FEB. Winter storms are forecast to impose delays across central Chinese airports; those currently affected include ZWWW/Urumqi Diwopu, ZSNJ/Nanjing Lukou, ZGGG/Guangzhou, and ZHHH/Wuhan Tianhe.

Eurocontrol NOP Changes 03FEB There are some significant changes to the daily Eurocontrol Briefings effective this week. Network News is no longer, and the D-1 daily conference is also gone. Instead, an Initial Network Plan is published each day at 1700Z on the **Network Operations Portal**.

TTxx/Trinidad and Tobago The annual Carnival in Port of Spain will take place on 08-09FEB . Travel and tourism activities are expected to continue for up to two weeks after the celebration and will be busiest during weekends. 10FEB (Ash Wednesday) is expected to be the busiest day of the year at the Port of Spain airport.

EISN/Shannon FIR Correction ** Due to a number of flights deviating from clearances prior to exiting Shanwick OCA, flight crews are reminded that Eastbound route clearances issued by Shannon Control for aircraft **exiting** Oceanic Airspace apply from AGORI, SUNOT, BILTO, PIKIL, ETARI, RESNO, VENER, DOGAL, NEBIN, MALOT, TOBOR, LIMRI, ADARA, DINIM, RODEL, SOMAX, KOGAD, BEDRA, OMOKO, TAMEL AND LASNO. Flights shall not turn **before** these points. In other words: wait until you enter (** Thank you to Shannon ATC for pointing out the error in last weeks bulletin).

North Atlantic Effective 04FEB MNPS Airspace is replaced by HLA/High Level Airspace on the North Atlantic – extended with Bodø joining Shanwick, Gander, Reykjavik, New York, and Santa Maria. RNP4 or RNP10 now required. Read our **International Ops Notice 01/2016** or our blog post: **Did you know MNPS is over?**

Eurocontrol NOP Changes There are some significant changes to the daily Eurocontrol Briefings effective 01FEB. Network News is no longer, and the D-1 daily conference is also gone. Instead, an Initial Network Plan is published each day at 1700Z on the Network Operations Portal.

FMMM/Madagascar CAA have issued a reminder to inbound operators that a Passenger List must be sent 24 hrs prior to departure for Madagascar, by email to gdp@acm.mg.

MKJK/Kingston FIR Jamaica, has ongoing issues with radar coverage and serviceability, leading to ad-hoc flow management procedures including 15 minute en-route separation, and 10 minute arrival separation at international airports. Delays appear likely. Reports welcome to bulletin@fsbureau.org.

FHAW/Ascension Island is now operating at Rescue and Firefighting Category 8/RFF8.

United Kingdom Last week the UK Registered Traveller Service, which is the equivalent of the US Global Entry program, was expanded to include a few more countries: Hong Kong, Singapore, South Korea and Taiwan. Additionally, Bristol and Cardiff will be added to the list of participating airports.

MUXX/Cuba Flight crews of US based aircraft can now remain in Cuba with their aircraft when traveling to the island nation, instead of having to reposition immediately after offloading passengers. The change took effect on 27JAN, with new amendments to the Cuban Assets Control Regulations and Export Administration Regulations issued by the U.S. OFAC and BIS.

NCRG/Rarotonga, Cook Islands has new hours of ATC service: 2050 SUN-0400 MON, 1500 MON-1930 MON, 0530 WED-1400 WED, 2100 THU-1000 FRI, 2100 FRI-1000 SAT, 1400 SAT-1930 SAT, 0600 SUN-1130 SUN. These are UTC/Z Times, local is UTC-10. Raro is an important diversion airport in the South Pacific, especially for Easter Island and Tahiti. ATC is avail with 30 mins PN outside these hours (call +682 25890/71439).

EHAM/Amsterdam has raised the minimum vectoring altitude from 1200ft to 1600ft, which seems to spell an end to those super efficient 3 mile final approaches to 06. Still the best Terminal ATC in Europe.

Europe EASA has launched a 2 person cockpit survey to open discussion on the impact of their new recommended practice of always having 2 crew members in the cockpit.

PKMJ/Majuro, Marshall Islands – ExxonMobil will have no fuel during tanker replenishment, scheduled for 13-17FEB.

ZXXX/China This is the busiest travel week of the year in China, with millions travelling for the Chinese

New Year on 08FEB. Winter storms are forecast to impose delays across central Chinese airports; those currently affected include ZWWW/Urumqi Diwopu Int'l, ZSNJ/Nanjing Lukou Int'l, ZGGG/Guangzhou, and ZHHH/Wuhan Tianhe.

ENGM/Oslo Oslo Airport has started supplying Air BP Biojet via its regular fuel hydrant system, naming three large European airlines as launch customers. It is now supplied from the main fuel farm, via common storage and distribution facilities, without the need for segregated infrastructure. Previously, it had to be provided by fuel truck.

DNKK/Kano ACC Nigeria, Area Radar Service is provided H24 from 04FEB.

View the full International Bulletin 03FEB2016

Midweek Briefing: Mexico Volcano Eruption, Atlantic MNPS is over... Introducing HLA

Cynthia Claros
1 June, 2016



Mexico Volcano Eruption 29JAN Popocatepetl Volcano, which is 55 kilometres southeast of Mexico City, had its last major eruption in 2000; it erupted on Tuesday this week affecting flight operations at **MMPB/Puebla**, and with the risk of further eruptions affecting operations in Mexico City itself.

Atlantic MNPS is over... introducing HLA 29JAN Effective next week, 04FEB, there are another round of changes on the North Atlantic – HLA/High Level Airspace is the replacement for MNPS, and the airspace is extended with Bodø joining Shanwick, Gander, Reykjavik, New York, and Santa Maria. Read our **International Ops Notice 01/2016**.

North Atlantic Effective 04FEB MNPS Airspace is replaced by HLA/High Level Airspace on the North Atlantic – extended with Bodø joining Shanwick, Gander, Reykjavik, New York, and Santa Maria. RNP4 or RNP10 now required. Read our **International Ops Notice 01/2016** or our blog post: **Did you know MNPS is over?**

TTxx/Trinidad and Tobago The annual Carnival in Port of Spain will take place on February 8 and 9, 2016. Travel and tourism activities are expected to continue for up to two weeks after the celebration and will be busiest during weekends. February 10, 2016 (Ash Wednesday) is expected to be the busiest day of the year at the Port of Spain airport. February 8 to 9, 2016 is also expected to be a congested time for departures.

KSFO/Super Bowl 50 The FAA will not be imposing a slot-based special traffic management program for the game on 08FEB, but ramp reservations, made through specific FBOs, will be required for all arrivals and departures from 04-08FEB. The rule will apply to all airports in the region, including San Francisco International, Oakland International, Hayward Executive, Norman Y. Mineta San Jose International, Livermore Municipal, Buchanan Field, Napa County, Charles M. Schulz-Sonoma County, Monterey Regional, Watsonville Municipal and Salinas Municipal. NBAA has set up a Super Bowl 50 information page that includes links to the FAA arrival/departure routes.

Uxxx/Tajikistan The U.K.'s Foreign and Commonwealth Office (FCO) issued updated travel advice for Tajikistan that reads as follows: "In early September 2015, armed clashes involving security forces resulted in a number of deaths close to Dushanbe International Airport and in the Romit Valley not far from Dushanbe. While tensions have eased, security remains heightened. You should continue to take extra care, monitor the local media and check this advice regularly."

KFZZ/Falcon Field, Arizona In January and February, Runways 4R/22L and 4L/22R at Falcon Field Airport (FFZ) in Mesa, AZ will be closed non-concurrently for the taxiway ALPHA realignment construction project. These are hard closures with no potential for runway recall. Runway 4L/22R had closed Jan. 12, at 6 a.m. (1300Z) and will remain closed until Saturday, Jan. 30, 2016. Runway 4R/22L is expected to close Monday, Feb. 1, at 6 a.m. (1300Z) and remain closed until Sunday, Feb. 15.

Kxxx/United States A few weeks ago we reported on new FAA FDC NOTAMs that eliminate the need to obtain a TSA Waiver for domestic flights in the US. on 17JAN The FAA has corrected an error in these (in simple terms, they forgot to include some previously issued exceptions), and so there are 3 brand new NOTAMS effective – these are 6/4255, 6/4256 and 6/4260. Got some time?**Read the original NOTAMs in full.**

Mxxx/Mexico The U.S. Department of State warns U.S. citizens about the risk of traveling to certain places in Mexico due to threats to safety and security posed by organized criminal groups in the country. U.S. citizens have been the victims of violent crimes, such as homicide, kidnapping, carjacking, and robbery by organized criminal groups in various Mexican states. This Travel Warning replaces the Travel Warning for Mexico, issued May 5, 2015

EISN/Shannon FIR Due to a number of flights deviating from clearances prior to exiting Shanwick OCA, flight crews are reminded that Eastbound route clearances issued by Shannon Control for aircraft exiting Oceanic Airspace apply from AGORI, SUNOT, BILTO, PIKIL, ETARI, RESNO, VENER, DOGAL, NEBIN, MALOT, TOBOR, LIMRI, ADARA, DINIM, RODEL, SOMAX, KOGAD, BEDRA, OMOKO, TAMEL AND LASNO. Flights shall not turn before these points.

Uxxx/Russia The Russian Institute of Volcanology has issued a code orange alert after Russia's Zhupanovsky volcano began erupting earlier this week, sending clouds of ash and gas to 27,000 ft. A code orange advises pilots to avoid flying near the ash cloud, reportedly moving over the North Pacific Ocean driven by prevailing easterly winds.

UIII/Irkutsk has issued NOTAM A0134/16 closing RWY 12/30 weekly on Tuesdays from 1210-1450Z

beginning Feb 02 and ending March 22. UIII is not available as an alternate during those times.

UHSS/Yuzhno is closed daily between 0330-0500Z due to preventative maintenance. No end date has been issued.

RPHI/Manila FIR has begun Phase 1-b of an ADS/CPDLC trail. The specific details of the plan can be found [here](#).

Wxxx/Indonesia As of 19JAN, Mount Egon has been erupting on Flores Island, which is located east of Bali Island. Egon emitted large amounts of ash and noxious gas. As of yet, the eruption has not caused any flight delays or cancellations; however, previous volcanic eruptions in the lesser Sunda Islands have caused extended delays in Denpasar and Mataram.

Zxxx/China Talks with the Zhuhai municipal government, Chinese government, Zhuhai Airport Authority and the Civil Aviation Authority China (CAAC) resulted in temporary International China Inspection and Quarantine (CIQ) services at Zhuhai Airport for non-scheduled business aviation movements. Following the approval late last month, China's National Port Administration Office opened a temporary customs port on January 1. The approval is renewable on a six-month basis. During the "approval period" from January 1 to June 30, crewmembers of foreign business aviation flights can enter and exit China via the temporary business aviation port at Zhuhai Airport.

View the full International Bulletin 27JAN2016

Monday Briefing: Your Attention Please, US Airport Disruptions

Cynthia Claros

1 June, 2016

INTERNATIONAL BULLETIN	ISSUED BY FLIGHT SERVICE BUREAU
	SITA HNLFSXH AKLFSXH AFTN KMCOXAAL
	EMAIL INTL.DESK@FSBUREAU.ORG



Your Attention Please 18JAN As we reach 25,000 readers, **your help is requested**. We want to make sure we're delivering the best bulletin to you, so if you have a few moments, please **answer 3**

questions. You'll receive a gift token for use in the **Flight Service store**.

US Airport Disruptions 18JAN Airport workers plan disruptions in nine U.S. cities on MLK Day (Monday). Watch out for industrial action in Boston, New York City, Newark, Philadelphia, Miami, Chicago, Portland, and Seattle.

FJDG/Diego Garcia is closed from 15JAN to 19JAN.

WSSS/Singapore 2016 Airshow takes place 16-21FEB at Changi. Planning for parking, accommodation and when required permits should be arranged as early as possible.

LTBA/Istanbul is expecting a significant snow event on Monday. Commercial carriers have already preemptively canceled flights until the storm passes. Please check latest weather advisories and plan accordingly.

Kxxx/United States Airport workers plan disruptions in nine U.S. cities on MLK Day (Jan 18th). Watch out for industrial in Boston; New York City; Newark, N.J.; Philadelphia; Miami; Chicago; Portland, Oregon; and Seattle.

LSZH/Zurich Delays this week due to World Economic Forum in Davos.

KMCO/Orlando A two-phase runway construction project at is scheduled to begin 12JAN and continue into April 2016. Runway 17R/35L will be closed during phase one, and Runway 18L/36R will close during phase two.

TBPB/Bardados is closed nightly from 0400-1000Z UTC due to work on the ATS building from Jan 13th to Jan 28th. Airspace is also downgraded to Class G to FL245 on the 13th, 14th, 20th, 21st, 27th and 28th. Please see NOTAM A0030/16 for full details.

URSS/Sochi reports of low fuel availability, check with Airport for latest, tankering recommended regardless.

NZxx/New Zealand The Aviation Security Officers Union advised on 14JAN of a possible strike. The union identified no date for the possible strike. Airport officials stated that if security officers strike, the air transportation will come to a standstill nationwide.

VIDP/New Delhi Airspace closed to commercial flights for more than an hour every day beginning next week in view of the Republic Day celebrations. 1035-1215 local, on 19-24JAN, and 26JAN.

West Africa The World Health Organization announced last week that the Ebola epidemic in West Africa is officially over. For the first time since the outbreak began in December 2013, all three of the hardest-hit West African nations — Liberia, Guinea and Sierra Leone — have had zero reported cases of Ebola for 42 days in a row, a period equal to two full incubation cycles of the virus.

VHHH/Hong Kong According to reports on 13JAN, thieves targeted a South African national aboard South African Airways flight 286 from Johannesburg to Hong Kong on 21 December. The victim stated that a fellow passenger alerted him that other passengers had taken his baggage while he was sleeping and rummaged through it in the aircraft lavatory. When the victim subsequently inspected his baggage, he found that the lock had been broken and foreign currency worth approximately \$1200, as well as items of jewelry, were missing. Hong Kong police officers searched several suspects when the aircraft landed, but the stolen items were not found. This type of crime is reportedly a significant problem on international

flights bound for Asian destinations, particularly Hong Kong. According to statistics released by Hong Kong authorities in August 2015, a total of 45 in-flight robberies had been reported up to that point in 2015; 48 cases occurred in 2014. Cash, jewelry and smartphones are especially targeted.

Lxxx/Turkey Foreign nationals filing certain visa applications at a consular post must now upload their application documents online through the Turkish electronic visa application system prior to appearing at a consular post. Applicants must still submit their visa application forms and supporting documents in person at a Turkish consular post. This system does not impact electronic visas for those nationals eligible for E-visas, but does impact business visitors who must acquire a consular visa.

Int Ops Bulletin As we reach 25,000 readers, your help is requested. We want to make sure we're delivering the best bulletin to you, so if you have a few moments, please answer 3 questions. You'll receive a gift token for use in the Flight Service store.

View the full International Bulletin 18JAN2016

Monday Briefing: Saudi Arabia, Bahrain ban flights from Iran, New US Visa Waiver Restrictions

Cynthia Claros
1 June, 2016

**INTERNATIONAL
BULLETIN**

ISSUED BY FLIGHT SERVICE BUREAU
SITA HNLFSXH AKLFSXH AFTN KMCXAAL
EMAIL INTL.DESK@FSBUREAU.ORG



Saudi Arabia and Bahrain ban flights from Iran 11JAN Bahraini and Saudi Civil aviation have banned flights between Bahrain, Saudi Arabia and Iran. The Bahraini Civil Aviation Authority (BCAA) stated that it will work to resolve any disruptions as a result of the ban. Bahrain previously cut diplomatic relations with Iran, following the attack on the Saudi Embassy in Tehran.

New US Visa Waiver Restrictions 11JAN Several changes to the rules for the US Visa Waiver program

are now in effect, restricting the movement of travelers having visited Iran, Iraq, Sudan, or Syria in the last 5 years. Read more ...

NFFN/Fiji A report released by the Disaster Management Office on 4 January 2016 stated that Cyclone Ula caused minor damage to Fiji. While the storm blew away iron roofs in Ono-i-Lau and Kabara islands, it did not cause significant structural damage or loss of life.

SBxx/Brazil Tourists from Australia, Canada, Japan and the United States will be eligible to travel to Brazil for the upcoming Olympics without a visa for up to 90 days for visits between 01JUN and 18SEP16, though no extensions will be available. Proof of Olympic attendance is not required for this visa waiver. Business travelers from these countries will still require business visas during this time. Eligible travelers should be sure to confirm the validity of their travel documents prior to their trips. After 18SEP, tourists from these countries will require tourist visas for entry.

LFL/Lyon Due to industrial strike affecting fuel providers at LFL (Lyon Airport). Aircraft Operators have been asked to tanker in enough fuel for a round trip. LFL Airport can also not be used as alternate until 12JAN.

Cxxx/Canada Nav Canada has issued AIC 3/16 advising of a pending change to the credit that may be taken at alternate aerodromes for lateral navigation/vertical navigation (LNAV/VNAV) minima, when the aircraft is certified for barometric LNAV/VNAV.

KPHX/Phoenix Possible arrival and departure delays are expected on 12JAN due to extra passenger volume the day after the Alabama and Clemson football game. The airport expects an extra 30,000 departing passengers that day, boosting the total number of passengers to 150,000. In addition to regularly scheduled flights, at least 14 charter flights will depart.

Kxxx/Southern California SpaceX has scheduled a launch for Jan. 17. This launch will take off from Vandenberg Air Force Base in California. Please check local NOTAMs with KZLA (SOCAL) and KZOA (Oakland Oceanic) for any airspace closures.

Zxxx/China Chinese officials stated that they will allow departing flights to transit via Taiwan. Aviation officials will allow flights departing from Chongqing, Nanchang and Kunming to transit through Taipei's Taoyuan International Airport (RCTP/TPE).

Fxxx/Madagascar On 7 January 2016, Malagasy health officials reported statistics in an ongoing outbreak of the bubonic plague. Reports indicate that 63 fatalities and a total of 174 cases have been recorded since August 2015. Madagascar first alerted the World Health Organization (WHO) to this outbreak in September. A previous outbreak in 2014, which lasted until early 2015, resulted in 335 cases and 79 fatalities.

Dxxx/Nigeria The Nigerian Civil Aviation Authority (NCAA) has lifted the suspension it recently imposed on Acorn Petroleum Limited from supplying aviation fuel to domestic and foreign airlines at airports in the country. NCAA had suspended Acorn and four other oil marketing companies from supplying aviation fuel to local and foreign airlines operating in the country.

Vxxx/India The Indian government has approved a Memorandum of Understanding on Civil Aviation between India and Singapore.

Shanwick/Gander: New NAT procedure - Confirm Assigned Route

Cynthia Claros

1 June, 2016



Coming soon to an FMS near you will be a new standard message from Oceanic ATC: **“Confirm Assigned Route”**.

If you’ve operated on the ‘half-tracks’ in the NAT recently, you’ll have seen this. So, what’s it all about?

Short and simple: with the half-tracks, the potential for Nav Errors are now (quite a lot, perhaps) higher than before. Waypoints are that bit more complicated, and 5030N 30W is a little too similar to 50N 30W.

So, to prevent you reading back the clearance correctly and then screwing up the route in the FMS, Shanwick (and Gander from 01DEC16) will ask you via datalink **“What are you planning to fly?”** once you enter the Ocean.

All you have to do is ack the message, scroll through your route and check it looks OK, and send it back down to them. If it’s the same as your clearance, then that’s that. If not, or you don’t reply, you’ll get an additional telegram from Shanwick.

Each aircraft has a different FMS of course, so the good people at NATS have issued **AIC 071/16** to help you – it covers the A320-340, 350/380, and 75,/76, 77. If you fly a business jet, one of those should be pretty similar to yours. And if you’re operating something a little older, keep the radio operators in Ballygirreen and Gander happy with a full position report.



Reference: Iceland AIC 12/16.

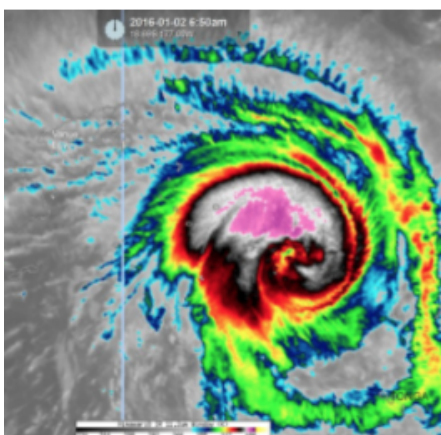
Monday Briefing: Cyclone Ula strengthens towards Fiji, TSA Waiver program changes

Cynthia Claros

1 June, 2016

INTERNATIONAL BULLETIN

ISSUED BY FLIGHT SERVICE BUREAU
SITA HNLFSXH AKLFSXH AFTN KMCXAAL
EMAIL INTL.DESK@FSBUREAU.ORG



Cyclone Ula maintains strength towards Fiji The first tropical cyclone for 2016 is lashing Fiji's outlying islands, after causing destruction in parts of Tonga. Category three Cyclone Ula is bringing 150-kilometre-an-hour winds, strong gusts and heavy rain to the Lau group, in Fiji's eastern division. Fiji Met Service has the latest information.

TSA Waiver program changes 04JAN The requirement for foreign operators to obtain a TSA Waiver for domestic flights within the US has been dropped, but only for aircraft under 45 tons. See new Notams FDC 5/6289, 5/5782, and 5/5806.

OAKB/Kabul, Afghanistan At approximately 1100 local time (0630 UTC) on 04JAN an explosion was reported near Hamid Karzai International Airport (OAKB/KBL). According to police sources, the blast occurred when a suicide bomber in a vehicle detonated explosives at a police checkpoint near the airport. With the exception of the assailant, the bombing did not result in injuries or fatalities, and there was no indication that airport operations were affected.

South Pacific / Tropical Storm Ula located approximately 230 nm south-southeast of Suva, Fiji. The current intensity is assessed at 85 knots based on Dvorak intensity estimates ranging from 77-102 knots. The system is expected to slow significantly under a weak steering influence, before shifting northwest as the ridge to the south begins to build.

UIBB/Bratsk A common Polar ETOPS alternate has issued a notice that non-scheduled aircraft must have prior permission due to fuel supply issues.

UIII/Irkutsk A common Polar ETOPS alternate. The main and only runway 12/30 is closed due to repair from 05JAN until 26JAN. Please see NOTAM A5600/15 for further details.

UDDD/Moscow Arrival of An-124 and B747 aircraft only by prior coordination with the Airport Company until March.

VHHK/Hong Kong International Airport opened a new \$10 billion concourse this week. The Midfield Concourse's 19 gates and 20 aircraft parking stands will allow the airport to handle an additional 10 million passengers per year and will serve approximately 20% of passenger flights once it begins operating at full capacity in March, Hong Kong International said. The five-story, 1.1 million-square-foot concourse sits between the airport's two existing runways and connects to Terminal 1 via an automatic people mover.

NFFF/Nadi FIR Until Jan 21/2016. Operators of RNAV equipped aircraft intending to operate within the NADI FIR shall plan using random routes only if the aircraft are equipped with RNP10 or better and must have HF. Non-RNP aircraft will be permitted to operate but will be required to flight plan vis published fixes air routes. Please see NOTAM A1521/15.

HSSS/Khartoum, Sudan has no Jet A1 available for Ad-hoc operations between 27DEC and 05JAN. Carry return fuel or choose another tech stop.

View the full International Operations Bulletin 04Jan2016